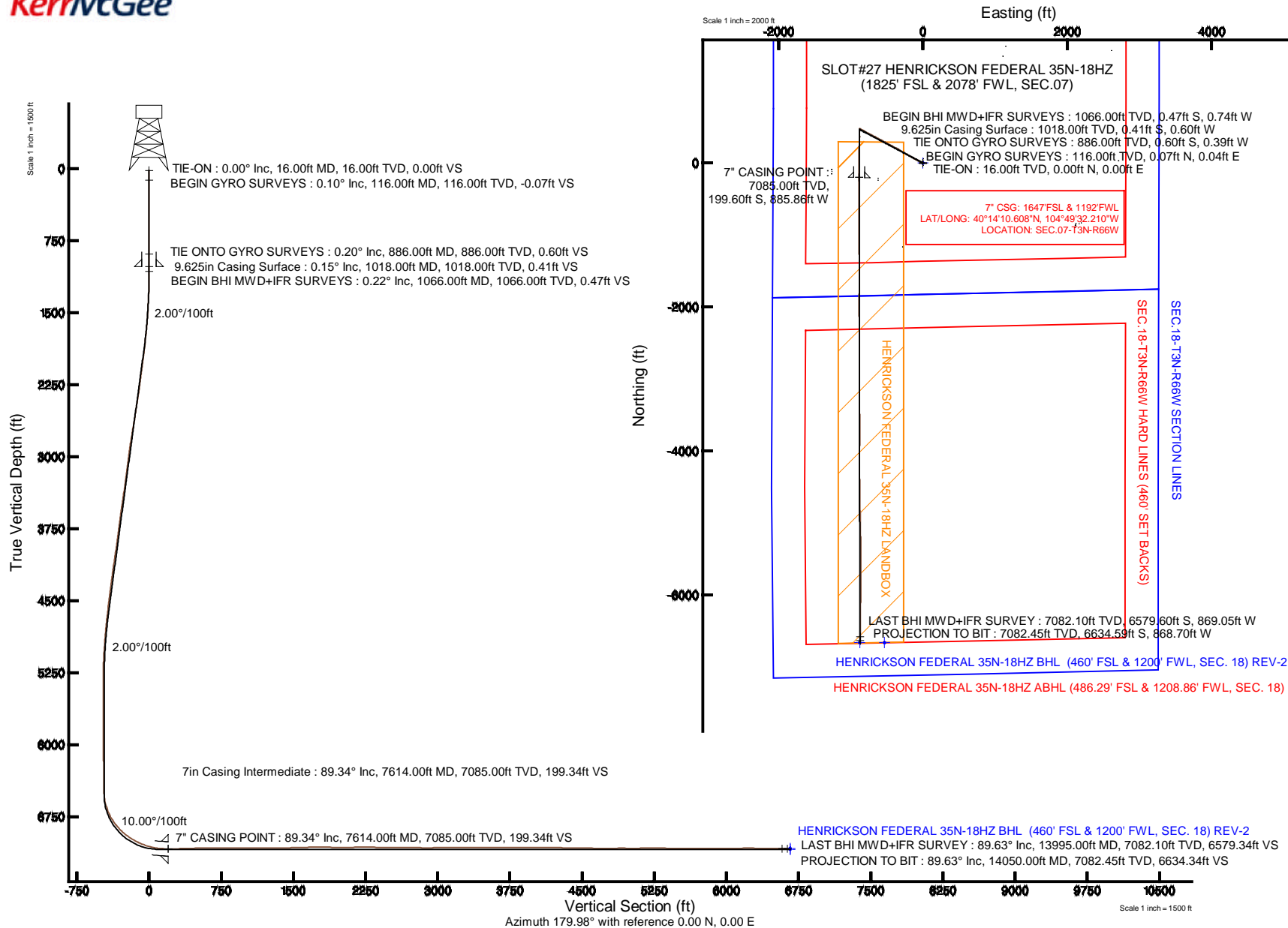


KERR-MCGEE OIL & GAS ONSHORE LP

Location: COLORADO Slot: SLOT#27 HENRICKSON FEDERAL 35N-18HZ (1825' FSL & 2078' FWL, SEC.07)
 Field: WELD COUNTY (KERR MCGEE) Well: HENRICKSON FEDERAL 35N-18HZ
 Facility: SEC.07-T3N-R66W Wellbore: HENRICKSON FEDERAL 35N-18HZ PWB

Plot reference wellpath is HENRICKSON FEDERAL 35N-18HZ (REV-B.0) PWP

True vertical depths are referenced to XTREME 20: (4810' 4794GL + 16KB) (RKB)	Grid System: NAD83 / Lambert Colorado SP, Northern Zone (501), US feet
Measured depths are referenced to XTREME 20: (4810' 4794GL + 16KB) (RKB)	North Reference: True north
XTREME 20: (4810' 4794GL + 16KB) (RKB) to Mean Sea Level: 4810 feet	Scale: True distance
Mean Sea Level to Mud line (At Slot: SLOT#27 HENRICKSON FEDERAL 35N-18HZ (1825' FSL & 2078' FWL, SEC.07)): 0 feet	Depths are in feet
Coordinates are in feet referenced to Slot	Created by: nobled1 on 17/Oct/2013



REFERENCE WELLPATH IDENTIFICATION

Operator	KERR-MCGEE OIL & GAS ONSHORE LP	Slot	SLOT#27 HENRICKSON FEDERAL 35N-18HZ (1825' FSL & 20
Area	COLORADO	Well	HENRICKSON FEDERAL 35N-18HZ
Field	WELD COUNTY (KERR MCGEE)	Wellbore	HENRICKSON FEDERAL 35N-18HZ AWB
Facility	SEC.07-T3N-R66W		

REPORT SETUP INFORMATION

Projection System	NAD83 / Lambert Colorado SP, Northern Zone (501), US feet	Software System	WellArchitect® 4.0.0
North Reference	True	User	Robiale01
Scale	0.999957	Report Generated	17/Oct/2013 at 14:38
Convergence at slot	n/a	Database/Source file	WA_ANADARKO/HENRICKSON_FEDERAL_35N-18HZ_AWB.xml

WELLPATH LOCATION

	Local coordinates		Grid coordinates		Geographic coordinates	
	North[ft]	East[ft]	Easting[US ft]	Northing[US ft]	Latitude	Longitude
Slot Location	-1610.92	-1147.76	3189159.55	1329841.00	40°14'12.581"N	104°49'20.788"W
Facility Reference Pt			3190294.85	1331460.62	40°14'28.500"N	104°49'05.988"W
Field Reference Pt			3197771.84	1268891.29	40°04'09.600"N	104°47'36.000"W

WELLPATH DATUM

Calculation method	Minimum curvature	XTREME 20: (4810': 4794'GL + 16'KB) (RKB) to Facility Vertical Datum	4810.00ft
Horizontal Reference Pt	Slot	XTREME 20: (4810': 4794'GL + 16'KB) (RKB) to Mean Sea Level	4810.00ft
Vertical Reference Pt	XTREME 20: (4810': 4794'GL + 16'KB) (RKB)	XTREME 20: (4810': 4794'GL + 16'KB) (RKB) to Mud Line at Slot (SLOT#27 HENRICKSON FEDERAL 35N-18HZ (1825' FSL & 2078' FWL, SEC.07))	4810.00ft
MD Reference Pt	XTREME 20: (4810': 4794'GL + 16'KB) (RKB)	Section Origin	N 0.00, E 0.00 ft
Field Vertical Reference	Mean Sea Level	Section Azimuth	179.98°

REFERENCE WELLPATH IDENTIFICATION

Operator	KERR-MCGEE OIL & GAS ONSHORE LP	Slot	SLOT#27 HENRICKSON FEDERAL 35N-18HZ (1825' FSL & 20
Area	COLORADO	Well	HENRICKSON FEDERAL 35N-18HZ
Field	WELD COUNTY (KERR MCGEE)	Wellbore	HENRICKSON FEDERAL 35N-18HZ AWB
Facility	SEC.07-T3N-R66W		

WELLPATH DATA (175 stations) † = interpolated/extrapolated station

MD [ft]	Inclination [°]	Azimuth [°]	TVD [ft]	Vert Sect [ft]	North [ft]	East [ft]	Latitude	Longitude	DLS [°/100ft]	Comments
0.00†	0.000	30.840	0.00	0.00	0.00	0.00	40°14'12.581"N	104°49'20.788"W	0.00	
16.00	0.000	30.840	16.00	0.00	0.00	0.00	40°14'12.581"N	104°49'20.788"W	0.00	TIE-ON
116.00	0.100	30.840	116.00	-0.07	0.07	0.04	40°14'12.582"N	104°49'20.787"W	0.10	BEGIN GYRO SURVEYS
216.00	0.160	159.220	216.00	-0.02	0.02	0.14	40°14'12.581"N	104°49'20.786"W	0.24	
316.00	0.140	229.400	316.00	0.19	-0.19	0.10	40°14'12.579"N	104°49'20.786"W	0.17	
416.00	0.130	271.740	416.00	0.27	-0.27	-0.11	40°14'12.578"N	104°49'20.789"W	0.10	
516.00	0.070	12.530	516.00	0.20	-0.20	-0.21	40°14'12.579"N	104°49'20.790"W	0.16	
616.00	0.140	162.040	616.00	0.26	-0.26	-0.16	40°14'12.578"N	104°49'20.790"W	0.20	
716.00	0.140	216.250	716.00	0.48	-0.48	-0.19	40°14'12.576"N	104°49'20.790"W	0.13	
816.00	0.120	213.240	816.00	0.66	-0.66	-0.32	40°14'12.574"N	104°49'20.792"W	0.02	
886.00	0.200	349.040	886.00	0.60	-0.60	-0.39	40°14'12.575"N	104°49'20.793"W	0.43	TIE ONTO GYRO SURVEYS
1066.00	0.220	239.060	1066.00	0.47	-0.47	-0.74	40°14'12.576"N	104°49'20.797"W	0.19	BEGIN BHI MWD+IFR SURVEYS
1158.00	1.970	296.500	1157.98	-0.14	0.14	-2.31	40°14'12.582"N	104°49'20.817"W	2.02	
1252.00	3.970	295.130	1251.85	-2.25	2.25	-6.70	40°14'12.603"N	104°49'20.874"W	2.13	
1343.00	5.530	296.940	1342.53	-5.57	5.57	-13.46	40°14'12.636"N	104°49'20.961"W	1.72	
1435.00	6.710	297.610	1434.01	-10.08	10.07	-22.18	40°14'12.680"N	104°49'21.074"W	1.28	
1527.00	8.370	299.190	1525.21	-15.84	15.83	-32.79	40°14'12.737"N	104°49'21.210"W	1.82	
1619.00	9.770	300.860	1616.06	-23.11	23.10	-45.33	40°14'12.809"N	104°49'21.372"W	1.55	
1710.00	11.150	297.770	1705.54	-31.18	31.16	-59.75	40°14'12.889"N	104°49'21.558"W	1.64	
1802.00	12.690	297.740	1795.55	-40.03	40.01	-76.56	40°14'12.976"N	104°49'21.775"W	1.67	
1893.00	13.580	297.250	1884.17	-49.58	49.55	-94.91	40°14'13.070"N	104°49'22.011"W	0.99	
1985.00	14.560	298.760	1973.41	-60.09	60.06	-114.65	40°14'13.174"N	104°49'22.266"W	1.14	
2077.00	16.330	298.800	2062.09	-71.90	71.86	-136.12	40°14'13.291"N	104°49'22.543"W	1.92	
2168.00	15.520	298.050	2149.59	-83.79	83.74	-158.08	40°14'13.408"N	104°49'22.826"W	0.92	
2260.00	16.110	297.450	2238.11	-95.47	95.42	-180.27	40°14'13.524"N	104°49'23.112"W	0.67	
2351.00	16.370	300.090	2325.48	-107.73	107.67	-202.57	40°14'13.645"N	104°49'23.400"W	0.86	
2442.00	16.750	301.560	2412.71	-121.03	120.96	-224.84	40°14'13.776"N	104°49'23.687"W	0.62	
2534.00	15.880	301.610	2501.00	-134.57	134.49	-246.85	40°14'13.910"N	104°49'23.971"W	0.95	
2626.00	17.610	301.390	2589.10	-148.42	148.34	-269.45	40°14'14.047"N	104°49'24.262"W	1.88	
2717.00	17.550	301.160	2675.85	-162.70	162.61	-292.95	40°14'14.188"N	104°49'24.565"W	0.10	
2809.00	17.900	301.640	2763.48	-177.30	177.20	-316.85	40°14'14.332"N	104°49'24.873"W	0.41	
2900.00	17.690	299.580	2850.13	-191.47	191.37	-340.78	40°14'14.472"N	104°49'25.182"W	0.73	
2991.00	16.260	295.600	2937.16	-203.80	203.70	-364.30	40°14'14.594"N	104°49'25.485"W	2.02	
3077.00	15.960	295.040	3019.78	-214.02	213.90	-385.87	40°14'14.695"N	104°49'25.763"W	0.39	
3162.00	16.070	298.040	3101.49	-224.50	224.38	-406.84	40°14'14.798"N	104°49'26.034"W	0.98	
3247.00	15.480	299.340	3183.29	-235.59	235.47	-427.11	40°14'14.908"N	104°49'26.295"W	0.81	
3332.00	15.730	299.540	3265.15	-246.84	246.71	-447.02	40°14'15.019"N	104°49'26.552"W	0.30	
3417.00	16.150	298.520	3346.88	-258.17	258.03	-467.44	40°14'15.131"N	104°49'26.815"W	0.59	
3503.00	16.160	301.880	3429.49	-270.21	270.06	-488.11	40°14'15.250"N	104°49'27.081"W	1.09	
3588.00	16.840	300.690	3510.99	-282.75	282.60	-508.74	40°14'15.373"N	104°49'27.348"W	0.89	
3673.00	16.810	297.300	3592.35	-294.67	294.52	-530.25	40°14'15.491"N	104°49'27.625"W	1.15	
3758.00	15.150	295.780	3674.07	-305.15	304.99	-551.18	40°14'15.595"N	104°49'27.895"W	2.01	
3843.00	15.110	295.930	3756.12	-314.83	314.66	-571.14	40°14'15.690"N	104°49'28.152"W	0.07	
3929.00	16.240	297.300	3838.92	-325.25	325.08	-591.91	40°14'15.793"N	104°49'28.420"W	1.38	
4014.00	17.730	298.570	3920.21	-336.90	336.72	-613.84	40°14'15.908"N	104°49'28.703"W	1.81	

REFERENCE WELLPATH IDENTIFICATION

Operator	KERR-MCGEE OIL & GAS ONSHORE LP	Slot	SLOT#27 HENRICKSON FEDERAL 35N-18HZ (1825' FSL & 20
Area	COLORADO	Well	HENRICKSON FEDERAL 35N-18HZ
Field	WELD COUNTY (KERR MCGEE)	Wellbore	HENRICKSON FEDERAL 35N-18HZ AWB
Facility	SEC.07-T3N-R66W		

WELLPATH DATA (175 stations)

MD [ft]	Inclination [°]	Azimuth [°]	TVD [ft]	Vert Sect [ft]	North [ft]	East [ft]	Latitude	Longitude	DLS [°/100ft]	Comments
4099.00	17.670	299.190	4001.19	-349.39	349.20	-636.47	40°14'16.031"N	104°49'28.994"W	0.23	
4184.00	16.790	298.560	4082.37	-361.56	361.36	-658.51	40°14'16.152"N	104°49'29.279"W	1.06	
4269.00	15.390	297.780	4164.04	-372.69	372.49	-679.27	40°14'16.262"N	104°49'29.546"W	1.67	
4354.00	15.540	297.470	4245.96	-383.21	383.00	-699.36	40°14'16.365"N	104°49'29.805"W	0.20	
4439.00	16.770	296.950	4327.60	-394.02	393.81	-720.39	40°14'16.472"N	104°49'30.077"W	1.46	
4524.00	15.440	296.420	4409.27	-404.62	404.40	-741.46	40°14'16.577"N	104°49'30.348"W	1.57	
4609.00	16.050	297.060	4491.08	-415.01	414.78	-762.05	40°14'16.680"N	104°49'30.614"W	0.75	
4695.00	14.820	298.030	4573.97	-425.59	425.36	-782.35	40°14'16.784"N	104°49'30.876"W	1.46	
4780.00	12.590	298.960	4656.55	-435.19	434.95	-800.05	40°14'16.879"N	104°49'31.104"W	2.64	
4865.00	11.380	298.630	4739.69	-443.70	443.46	-815.52	40°14'16.963"N	104°49'31.303"W	1.43	
4950.00	10.320	297.400	4823.17	-451.23	450.98	-829.64	40°14'17.037"N	104°49'31.485"W	1.28	
5035.00	9.960	298.800	4906.85	-458.27	458.02	-842.84	40°14'17.107"N	104°49'31.656"W	0.51	
5121.00	8.320	299.090	4991.75	-464.89	464.63	-854.80	40°14'17.172"N	104°49'31.810"W	1.91	
5206.00	6.900	300.020	5076.00	-470.43	470.18	-864.59	40°14'17.227"N	104°49'31.936"W	1.68	
5291.00	5.080	293.440	5160.53	-474.49	474.23	-872.47	40°14'17.267"N	104°49'32.038"W	2.29	
5376.00	3.860	281.510	5245.28	-476.56	476.30	-878.72	40°14'17.287"N	104°49'32.118"W	1.80	
5461.00	2.490	274.240	5330.14	-477.27	477.00	-883.37	40°14'17.294"N	104°49'32.178"W	1.68	
5546.00	0.870	266.190	5415.10	-477.36	477.10	-885.85	40°14'17.295"N	104°49'32.210"W	1.92	
5631.00	0.730	281.850	5500.10	-477.43	477.17	-887.03	40°14'17.296"N	104°49'32.225"W	0.30	
5716.00	0.300	133.400	5585.09	-477.39	477.13	-887.39	40°14'17.296"N	104°49'32.230"W	1.18	
5801.00	0.700	131.450	5670.09	-476.89	476.63	-886.84	40°14'17.291"N	104°49'32.223"W	0.47	
5887.00	0.800	126.210	5756.08	-476.19	475.93	-885.96	40°14'17.284"N	104°49'32.212"W	0.14	
5972.00	0.770	126.540	5841.08	-475.50	475.24	-885.03	40°14'17.277"N	104°49'32.200"W	0.04	
6057.00	0.700	128.630	5926.07	-474.84	474.57	-884.16	40°14'17.270"N	104°49'32.188"W	0.09	
6143.00	0.590	122.170	6012.06	-474.27	474.01	-883.38	40°14'17.265"N	104°49'32.178"W	0.15	
6227.00	0.590	137.660	6096.06	-473.72	473.46	-882.72	40°14'17.259"N	104°49'32.170"W	0.19	
6312.00	0.520	139.360	6181.05	-473.11	472.84	-882.17	40°14'17.253"N	104°49'32.163"W	0.08	
6397.00	0.410	132.440	6266.05	-472.61	472.35	-881.70	40°14'17.248"N	104°49'32.157"W	0.15	
6482.00	0.370	130.410	6351.05	-472.22	471.96	-881.26	40°14'17.245"N	104°49'32.151"W	0.05	
6567.00	0.360	129.400	6436.05	-471.88	471.61	-880.85	40°14'17.241"N	104°49'32.146"W	0.01	
6652.00	5.360	187.850	6520.92	-467.77	467.51	-881.18	40°14'17.201"N	104°49'32.150"W	6.09	
6695.00	9.780	182.270	6563.53	-462.13	461.87	-881.60	40°14'17.145"N	104°49'32.155"W	10.41	
6737.00	13.020	180.200	6604.70	-453.83	453.57	-881.76	40°14'17.063"N	104°49'32.158"W	7.77	
6780.00	16.560	178.340	6646.27	-442.86	442.60	-881.60	40°14'16.954"N	104°49'32.155"W	8.31	
6822.00	20.210	176.650	6686.12	-429.63	429.37	-881.00	40°14'16.824"N	104°49'32.148"W	8.78	
6865.00	25.780	176.540	6725.69	-412.87	412.61	-880.00	40°14'16.658"N	104°49'32.135"W	12.95	
6908.00	30.330	176.400	6763.62	-392.69	392.43	-878.76	40°14'16.459"N	104°49'32.119"W	10.58	
6951.00	35.680	179.950	6799.68	-369.29	369.03	-878.06	40°14'16.227"N	104°49'32.110"W	13.22	
6993.00	37.480	181.330	6833.40	-344.27	344.01	-878.35	40°14'15.980"N	104°49'32.113"W	4.71	
7036.00	41.670	184.200	6866.54	-316.92	316.66	-879.70	40°14'15.710"N	104°49'32.131"W	10.63	
7078.00	45.990	183.780	6896.83	-287.91	287.65	-881.72	40°14'15.423"N	104°49'32.157"W	10.31	
7121.00	50.100	183.300	6925.57	-256.00	255.74	-883.69	40°14'15.108"N	104°49'32.182"W	9.59	
7163.00	54.280	182.060	6951.32	-222.86	222.60	-885.23	40°14'14.780"N	104°49'32.202"W	10.22	
7206.00	57.010	182.270	6975.58	-187.39	187.13	-886.57	40°14'14.430"N	104°49'32.219"W	6.36	
7248.00	60.750	180.930	6997.28	-151.46	151.20	-887.57	40°14'14.075"N	104°49'32.232"W	9.31	

REFERENCE WELLPATH IDENTIFICATION

Operator	KERR-MCGEE OIL & GAS ONSHORE LP	Slot	SLOT#27 HENRICKSON FEDERAL 35N-18HZ (1825' FSL & 20
Area	COLORADO	Well	HENRICKSON FEDERAL 35N-18HZ
Field	WELD COUNTY (KERR MCGEE)	Wellbore	HENRICKSON FEDERAL 35N-18HZ AWB
Facility	SEC.07-T3N-R66W		

WELLPATH DATA (175 stations) † = interpolated/extrapolated station

MD [ft]	Inclination [°]	Azimuth [°]	TVD [ft]	Vert Sect [ft]	North [ft]	East [ft]	Latitude	Longitude	DLS [°/100ft]	Comments
7291.00	63.580	179.630	7017.36	-113.44	113.18	-887.75	40°14'13.699"N	104°49'32.235"W	7.10	
7333.00	67.740	178.210	7034.67	-75.19	74.93	-887.02	40°14'13.321"N	104°49'32.225"W	10.37	
7376.00	71.240	178.970	7049.73	-34.93	34.67	-886.03	40°14'12.923"N	104°49'32.212"W	8.31	
7419.00	75.650	179.230	7061.98	6.27	-6.53	-885.39	40°14'12.516"N	104°49'32.204"W	10.27	
7462.00	78.380	179.960	7071.64	48.16	-48.43	-885.09	40°14'12.102"N	104°49'32.200"W	6.56	
7504.00	82.830	179.510	7078.50	89.59	-89.85	-884.90	40°14'11.693"N	104°49'32.198"W	10.65	
7547.00	86.800	181.000	7082.38	132.40	-132.67	-885.09	40°14'11.270"N	104°49'32.200"W	9.86	
7576.00	87.280	180.500	7083.88	161.36	-161.62	-885.47	40°14'10.983"N	104°49'32.205"W	2.39	
7614.00†	89.343	180.681	7085.00	199.34	-199.60	-885.86	40°14'10.608"N	104°49'32.210"W	5.45	7" CASING POINT
7639.00	90.700	180.800	7084.99	224.34	-224.60	-886.19	40°14'10.361"N	104°49'32.214"W	5.45	
7685.00	91.350	179.710	7084.17	270.33	-270.59	-886.39	40°14'09.907"N	104°49'32.217"W	2.76	
7776.00	92.340	180.020	7081.24	361.28	-361.54	-886.18	40°14'09.008"N	104°49'32.214"W	1.14	
7867.00	91.260	180.780	7078.38	452.23	-452.49	-886.81	40°14'08.109"N	104°49'32.222"W	1.45	
7959.00	91.230	179.990	7076.38	544.21	-544.47	-887.43	40°14'07.200"N	104°49'32.230"W	0.86	
8051.00	89.900	180.280	7075.47	636.20	-636.46	-887.65	40°14'06.291"N	104°49'32.233"W	1.48	
8142.00	91.080	180.010	7074.69	727.19	-727.46	-887.88	40°14'05.392"N	104°49'32.236"W	1.33	
8234.00	89.660	180.450	7074.10	819.19	-819.45	-888.24	40°14'04.483"N	104°49'32.241"W	1.62	
8326.00	90.210	180.030	7074.20	911.19	-911.45	-888.63	40°14'03.574"N	104°49'32.245"W	0.75	
8418.00	88.730	179.350	7075.06	1003.18	-1003.44	-888.13	40°14'02.665"N	104°49'32.239"W	1.77	
8510.00	89.930	179.020	7076.13	1095.16	-1095.43	-886.82	40°14'01.756"N	104°49'32.222"W	1.35	
8601.00	89.190	179.310	7076.83	1186.15	-1186.41	-885.50	40°14'00.857"N	104°49'32.205"W	0.87	
8693.00	90.090	179.720	7077.41	1278.14	-1278.41	-884.72	40°13'59.948"N	104°49'32.195"W	1.07	
8784.00	91.230	179.710	7076.36	1369.13	-1369.40	-884.27	40°13'59.048"N	104°49'32.189"W	1.25	
8876.00	92.460	179.480	7073.40	1461.08	-1461.35	-883.62	40°13'58.140"N	104°49'32.181"W	1.36	
8968.00	91.070	180.120	7070.56	1553.04	-1553.30	-883.30	40°13'57.231"N	104°49'32.176"W	1.66	
9059.00	92.000	180.120	7068.13	1644.00	-1644.26	-883.49	40°13'56.332"N	104°49'32.179"W	1.02	
9150.00	90.890	180.250	7065.83	1734.97	-1735.23	-883.78	40°13'55.433"N	104°49'32.183"W	1.23	
9242.00	88.430	181.130	7066.38	1826.96	-1827.22	-884.89	40°13'54.524"N	104°49'32.197"W	2.84	
9333.00	89.010	180.530	7068.41	1917.92	-1918.18	-886.21	40°13'53.625"N	104°49'32.214"W	0.92	
9425.00	89.750	179.510	7069.41	2009.91	-2010.18	-886.24	40°13'52.716"N	104°49'32.214"W	1.37	
9517.00	91.170	179.060	7068.67	2101.90	-2102.16	-885.09	40°13'51.807"N	104°49'32.199"W	1.62	
9608.00	90.270	179.560	7067.52	2192.89	-2193.15	-883.99	40°13'50.908"N	104°49'32.185"W	1.13	
9700.00	89.900	179.980	7067.39	2284.89	-2285.15	-883.62	40°13'49.999"N	104°49'32.180"W	0.61	
9791.00	88.330	179.920	7068.79	2375.87	-2376.13	-883.55	40°13'49.100"N	104°49'32.179"W	1.73	
9882.00	89.590	179.450	7070.44	2466.85	-2467.12	-883.05	40°13'48.201"N	104°49'32.173"W	1.48	
9968.00	90.700	179.500	7070.23	2552.85	-2553.11	-882.26	40°13'47.351"N	104°49'32.163"W	1.29	
10053.00	89.840	179.930	7069.83	2637.85	-2638.11	-881.83	40°13'46.511"N	104°49'32.157"W	1.13	
10138.00	88.470	179.560	7071.08	2722.83	-2723.10	-881.46	40°13'45.671"N	104°49'32.152"W	1.67	
10223.00	89.160	180.180	7072.84	2807.81	-2808.08	-881.26	40°13'44.831"N	104°49'32.150"W	1.09	
10308.00	89.960	180.120	7073.49	2892.81	-2893.07	-881.49	40°13'43.992"N	104°49'32.152"W	0.94	
10393.00	91.010	179.950	7072.77	2977.81	-2978.07	-881.54	40°13'43.152"N	104°49'32.153"W	1.25	
10478.00	90.000	179.920	7072.02	3062.80	-3063.06	-881.44	40°13'42.312"N	104°49'32.152"W	1.19	
10564.00	90.890	179.970	7071.35	3148.80	-3149.06	-881.36	40°13'41.462"N	104°49'32.151"W	1.04	
10649.00	89.290	179.740	7071.22	3233.80	-3234.06	-881.14	40°13'40.622"N	104°49'32.148"W	1.90	
10734.00	89.720	178.860	7071.96	3318.79	-3319.05	-880.11	40°13'39.782"N	104°49'32.134"W	1.15	

REFERENCE WELLPATH IDENTIFICATION

Operator	KERR-MCGEE OIL & GAS ONSHORE LP	Slot	SLOT#27 HENRICKSON FEDERAL 35N-18HZ (1825' FSL & 20
Area	COLORADO	Well	HENRICKSON FEDERAL 35N-18HZ
Field	WELD COUNTY (KERR MCGEE)	Wellbore	HENRICKSON FEDERAL 35N-18HZ AWP
Facility	SEC.07-T3N-R66W		

WELLPATH DATA (175 stations)

MD [ft]	Inclination [°]	Azimuth [°]	TVD [ft]	Vert Sect [ft]	North [ft]	East [ft]	Latitude	Longitude	DLS [°/100ft]	Comments
10819.00	90.000	179.610	7072.16	3403.78	-3404.04	-878.97	40°13'38.942"N	104°49'32.120"W	0.94	
10904.00	91.200	179.170	7071.27	3488.77	-3489.03	-878.07	40°13'38.102"N	104°49'32.108"W	1.50	
10990.00	89.930	180.010	7070.42	3574.76	-3575.02	-877.45	40°13'37.253"N	104°49'32.100"W	1.77	
11075.00	90.060	180.230	7070.43	3659.76	-3660.02	-877.63	40°13'36.413"N	104°49'32.102"W	0.30	
11160.00	91.230	179.990	7069.48	3744.75	-3745.01	-877.79	40°13'35.573"N	104°49'32.104"W	1.41	
11245.00	89.560	180.180	7068.89	3829.75	-3830.01	-877.92	40°13'34.733"N	104°49'32.106"W	1.98	
11330.00	90.240	180.020	7069.04	3914.74	-3915.00	-878.07	40°13'33.893"N	104°49'32.108"W	0.82	
11415.00	88.790	180.470	7069.76	3999.74	-4000.00	-878.43	40°13'33.053"N	104°49'32.112"W	1.79	
11501.00	89.530	180.290	7071.02	4085.73	-4085.99	-879.00	40°13'32.203"N	104°49'32.120"W	0.89	
11585.00	90.120	179.890	7071.27	4169.72	-4169.99	-879.13	40°13'31.373"N	104°49'32.121"W	0.85	
11670.00	88.610	179.750	7072.22	4254.72	-4254.98	-878.86	40°13'30.533"N	104°49'32.118"W	1.78	
11755.00	89.560	179.650	7073.57	4339.70	-4339.96	-878.42	40°13'29.693"N	104°49'32.112"W	1.12	
11841.00	90.000	179.090	7073.90	4425.70	-4425.96	-877.47	40°13'28.844"N	104°49'32.100"W	0.83	
11926.00	88.150	179.800	7075.28	4510.68	-4510.94	-876.65	40°13'28.004"N	104°49'32.089"W	2.33	
12011.00	88.550	179.370	7077.72	4595.64	-4595.90	-876.04	40°13'27.164"N	104°49'32.081"W	0.69	
12096.00	89.810	178.570	7078.94	4680.62	-4680.88	-874.51	40°13'26.325"N	104°49'32.062"W	1.76	
12181.00	90.150	178.740	7078.97	4765.59	-4765.85	-872.51	40°13'25.485"N	104°49'32.036"W	0.45	
12266.00	90.860	179.180	7078.22	4850.58	-4850.83	-870.97	40°13'24.645"N	104°49'32.016"W	0.98	
12352.00	89.530	179.120	7077.93	4936.56	-4936.82	-869.69	40°13'23.795"N	104°49'31.999"W	1.55	
12437.00	89.870	178.920	7078.37	5021.55	-5021.81	-868.24	40°13'22.955"N	104°49'31.981"W	0.46	
12522.00	90.610	178.540	7078.02	5106.53	-5106.79	-866.36	40°13'22.116"N	104°49'31.956"W	0.98	
12607.00	89.780	179.280	7077.73	5191.51	-5191.77	-864.74	40°13'21.276"N	104°49'31.935"W	1.31	
12692.00	90.650	179.430	7077.41	5276.51	-5276.76	-863.78	40°13'20.436"N	104°49'31.923"W	1.04	
12777.00	88.820	179.690	7077.80	5361.50	-5361.76	-863.13	40°13'19.596"N	104°49'31.915"W	2.17	
12862.00	89.440	179.580	7079.09	5446.49	-5446.74	-862.59	40°13'18.756"N	104°49'31.908"W	0.74	
12947.00	89.870	179.650	7079.60	5531.48	-5531.74	-862.02	40°13'17.916"N	104°49'31.900"W	0.51	
13032.00	90.890	179.740	7079.04	5616.48	-5616.74	-861.56	40°13'17.076"N	104°49'31.894"W	1.20	
13117.00	88.700	179.920	7079.34	5701.47	-5701.73	-861.31	40°13'16.237"N	104°49'31.891"W	2.59	
13203.00	89.590	180.230	7080.63	5787.46	-5787.72	-861.43	40°13'15.387"N	104°49'31.892"W	1.10	
13288.00	90.730	179.820	7080.39	5872.46	-5872.72	-861.46	40°13'14.547"N	104°49'31.893"W	1.43	
13373.00	89.810	180.630	7079.99	5957.46	-5957.71	-861.80	40°13'13.707"N	104°49'31.897"W	1.44	
13458.00	90.360	181.220	7079.86	6042.45	-6042.70	-863.17	40°13'12.867"N	104°49'31.915"W	0.95	
13544.00	91.050	181.840	7078.81	6128.41	-6128.66	-865.46	40°13'12.018"N	104°49'31.944"W	1.08	
13629.00	90.490	180.180	7077.66	6213.38	-6213.64	-866.96	40°13'11.178"N	104°49'31.964"W	2.06	
13714.00	88.610	180.430	7078.33	6298.37	-6298.63	-867.41	40°13'10.338"N	104°49'31.969"W	2.23	
13799.00	89.250	180.500	7079.92	6383.36	-6383.61	-868.10	40°13'09.498"N	104°49'31.978"W	0.76	
13885.00	89.190	180.510	7081.09	6469.34	-6469.60	-868.86	40°13'08.648"N	104°49'31.988"W	0.07	
13970.00	89.660	179.880	7081.94	6554.34	-6554.60	-869.15	40°13'07.809"N	104°49'31.992"W	0.92	
13995.00	89.630	179.640	7082.10	6579.34	-6579.60	-869.05	40°13'07.562"N	104°49'31.990"W	0.97	LAST BHI MWD+IFR SURVEY
14050.00	89.630	179.640	7082.45	6634.34	-6634.59	-868.70	40°13'07.018"N	104°49'31.986"W	0.00	PROJECTION TO BIT

REFERENCE WELLPATH IDENTIFICATION

Operator	KERR-MCGEE OIL & GAS ONSHORE LP	Slot	SLOT#27 HENRICKSON FEDERAL 35N-18HZ (1825' FSL & 20
Area	COLORADO	Well	HENRICKSON FEDERAL 35N-18HZ
Field	WELD COUNTY (KERR MCGEE)	Wellbore	HENRICKSON FEDERAL 35N-18HZ AWB
Facility	SEC.07-T3N-R66W		

HOLE & CASING SECTIONS -

Ref Wellbore: HENRICKSON FEDERAL 35N-18HZ AWB Ref Wellpath: HENRICKSON FEDERAL 35N-18HZ AWP

String/Diameter	Start MD [ft]	End MD [ft]	Interval [ft]	Start TVD [ft]	End TVD [ft]	Start N/S [ft]	Start E/W [ft]	End N/S [ft]	End E/W [ft]
13.5in Open Hole	16.00	1018.00	1002.00	16.00	1018.00	0.00	0.00	-0.41	-0.60
9.625in Casing Surface	16.00	1018.00	1002.00	16.00	1018.00	0.00	0.00	-0.41	-0.60
8.75in Open Hole	1018.00	7631.00	6613.00	1018.00	7085.06	-0.41	-0.60	-216.60	-886.08
7in Casing Intermediate	16.00	7614.00	7598.00	16.00	7085.00	0.00	0.00	-199.60	-885.86
6.125in Open Hole	7631.00	14050.00	6419.00	7085.06	7082.45	-216.60	-886.08	-6634.59	-868.70

TARGETS

Name	MD [ft]	TVD [ft]	North [ft]	East [ft]	Grid East [US ft]	Grid North [US ft]	Latitude	Longitude	Shape
SEC.07-T3N-R66W HARD LINES (460' SET BACKS)		4810.00	-87.76	-1265.31	3187895.01	1329743.58	40°14'11.713"N	104°49'37.103"W	polygon
SEC.07-T3N-R66W SECTION LINES		4810.00	-87.76	-1265.31	3187895.01	1329743.58	40°14'11.713"N	104°49'37.103"W	polygon
SEC.18-T3N-R66W HARD LINES (460' SET BACKS)		4810.00	-87.76	-1265.30	3187895.01	1329743.58	40°14'11.713"N	104°49'37.103"W	polygon
SEC.18-T3N-R66W SECTION LINES		4810.00	-11672.84	1488.23	3190736.85	1318180.40	40°12'17.230"N	104°49'01.607"W	polygon
HENRICKSON FEDERAL 35N-18HZ LANDBOX		7080.00	0.00	0.00	3189159.55	1329841.00	40°14'12.581"N	104°49'20.788"W	polygon
HENRICKSON FEDERAL 35N-18HZ BHL ON PLAT (460' FSL & 1545' FWL, SEC. 18) REV-1		7080.00	-6660.88	-532.56	3188677.92	1323176.55	40°13'06.758"N	104°49'27.653"W	point
HENRICKSON FEDERAL 35N-18HZ BHL (460' FSL & 1200' FWL, SEC. 18) REV-2		7090.00	-6660.88	-877.56	3188332.95	1323173.91	40°13'06.758"N	104°49'32.100"W	point

WELLPATH COMPOSITION -

Ref Wellbore: HENRICKSON FEDERAL 35N-18HZ AWB Ref Wellpath: HENRICKSON FEDERAL 35N-18HZ AWP

Start MD [ft]	End MD [ft]	Positional Uncertainty Model	Log Name/Comment	Wellbore
16.00	886.00	Generic gyro - continuous (Standard)	MS GYRODATA SURVEYS <116-886>	HENRICKSON FEDERAL 35N-18HZ AWP
886.00	7576.00	NaviTrak (MAGCORR,IFR)	BHI MWD+IFR SURVEYS 8 3/4" HOLE <1066-7576	HENRICKSON FEDERAL 35N-18HZ AWP
7576.00	13995.00	OnTrak (MAGCORR,IFR)	BHI MWD+IFR SURVEYS 6 1/8" HOLE <7639-13995>	HENRICKSON FEDERAL 35N-18HZ AWP
13995.00	14050.00	Blind Drilling (std)	Projection to bit	HENRICKSON FEDERAL 35N-18HZ AWP

REFERENCE WELLPATH IDENTIFICATION

Operator	KERR-MCGEE OIL & GAS ONSHORE LP	Slot	SLOT#27 HENRICKSON FEDERAL 35N-18HZ (1825' FSL & 20
Area	COLORADO	Well	HENRICKSON FEDERAL 35N-18HZ
Field	WELD COUNTY (KERR MCGEE)	Wellbore	HENRICKSON FEDERAL 35N-18HZ AWB
Facility	SEC.07-T3N-R66W		

WELLPATH COMMENTS

MD [ft]	Inclination [°]	Azimuth [°]	TVD [ft]	Comment
16.00	0.000	30.840	16.00	TIE-ON
116.00	0.100	30.840	116.00	BEGIN GYRO SURVEYS
886.00	0.200	349.040	886.00	TIE ONTO GYRO SURVEYS
1066.00	0.220	239.060	1066.00	BEGIN BHI MWD+IFR SURVEYS
7614.00	89.343	180.681	7085.00	7" CASING POINT
13995.00	89.630	179.640	7082.10	LAST BHI MWD+IFR SURVEY
14050.00	89.630	179.640	7082.45	PROJECTION TO BIT