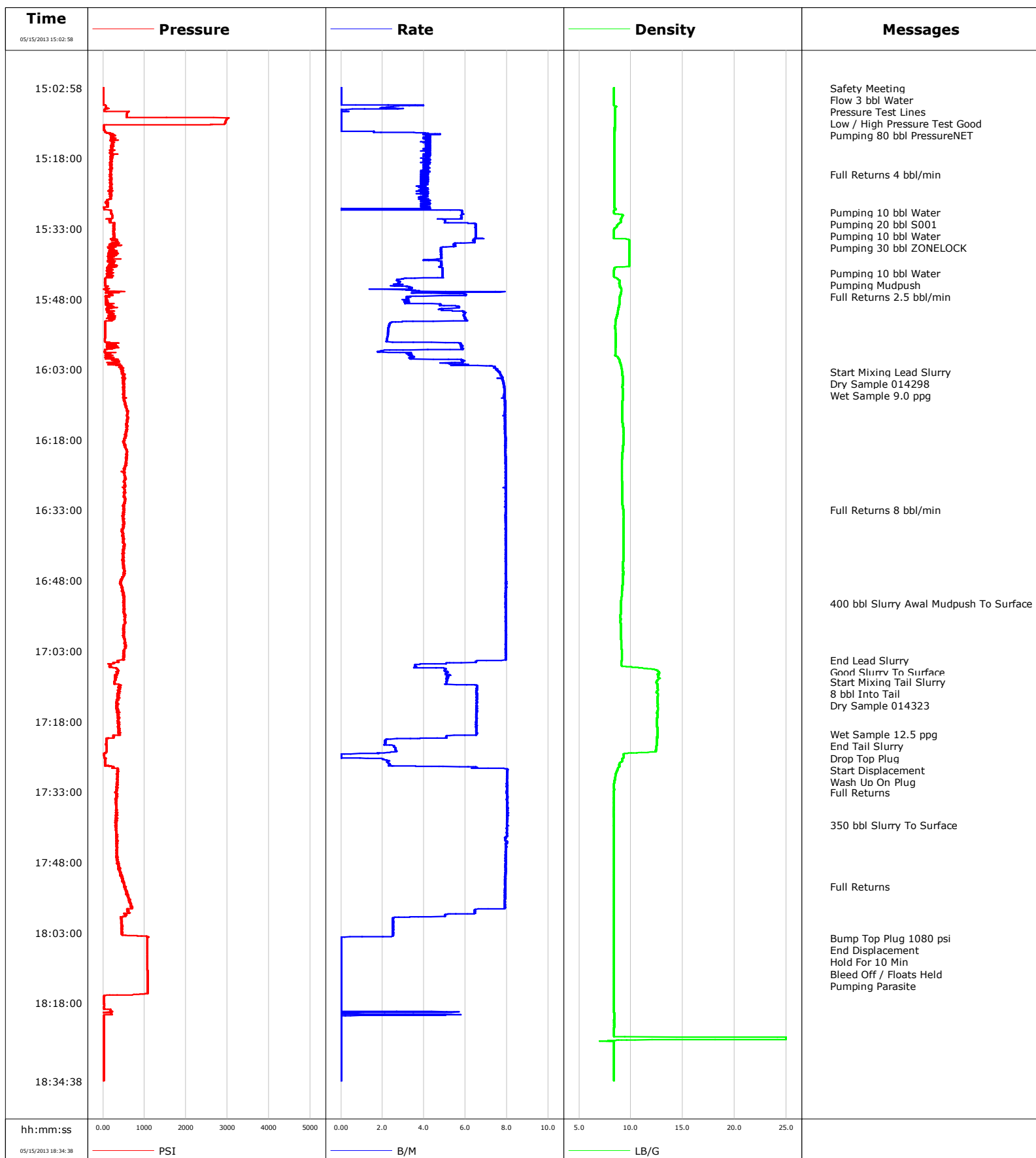


Well SGU 8507D-23
Field Story Gulch
Engineer Travis Willardson / Cole Fairbrook
Country United States

Client EnCana
SIR No. CAIO-00137
Job Type 9 5/8 Surface
Job Date 05-15-2013

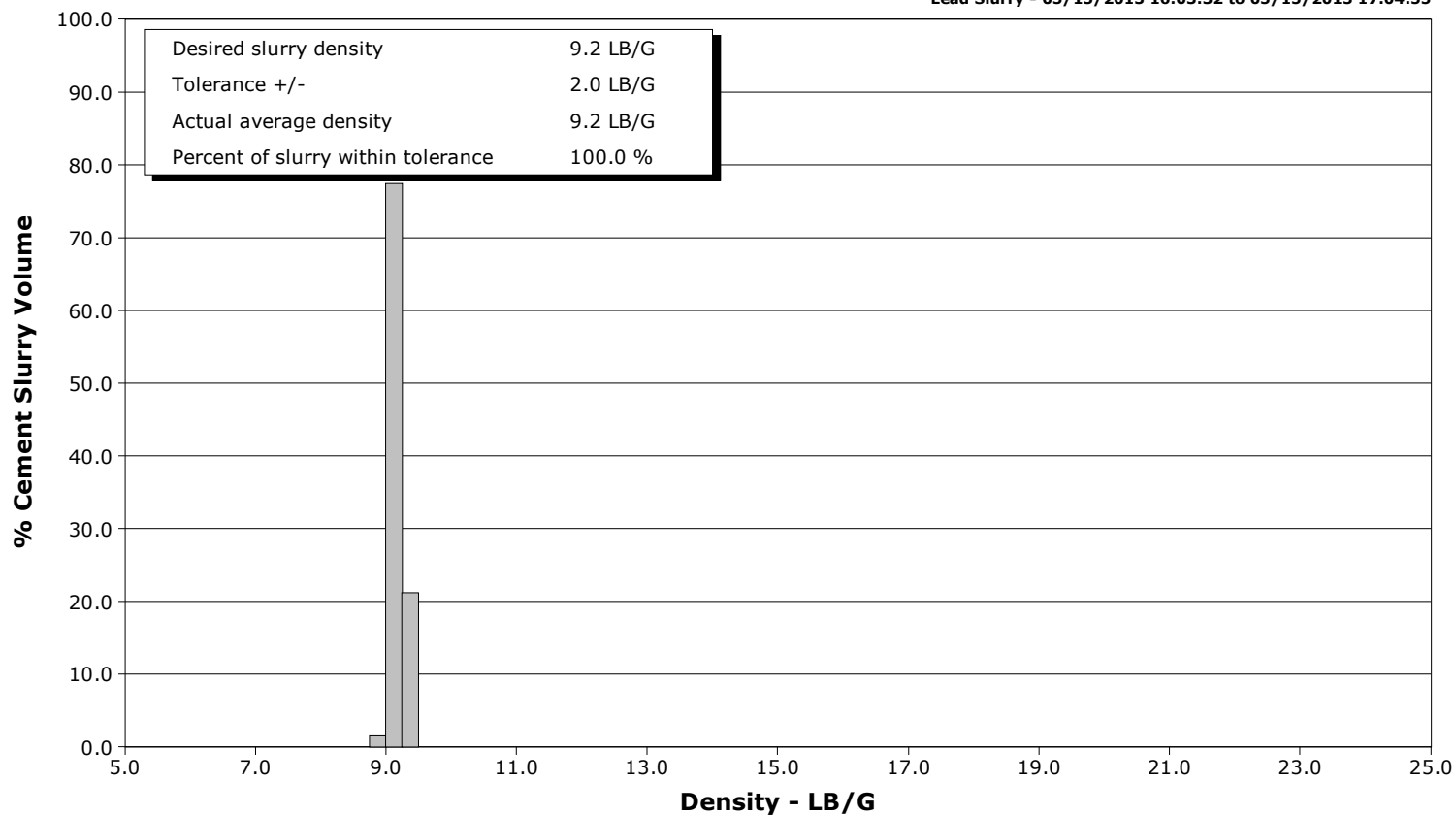


Schlumberger Cementing Qa/Qc Density Report

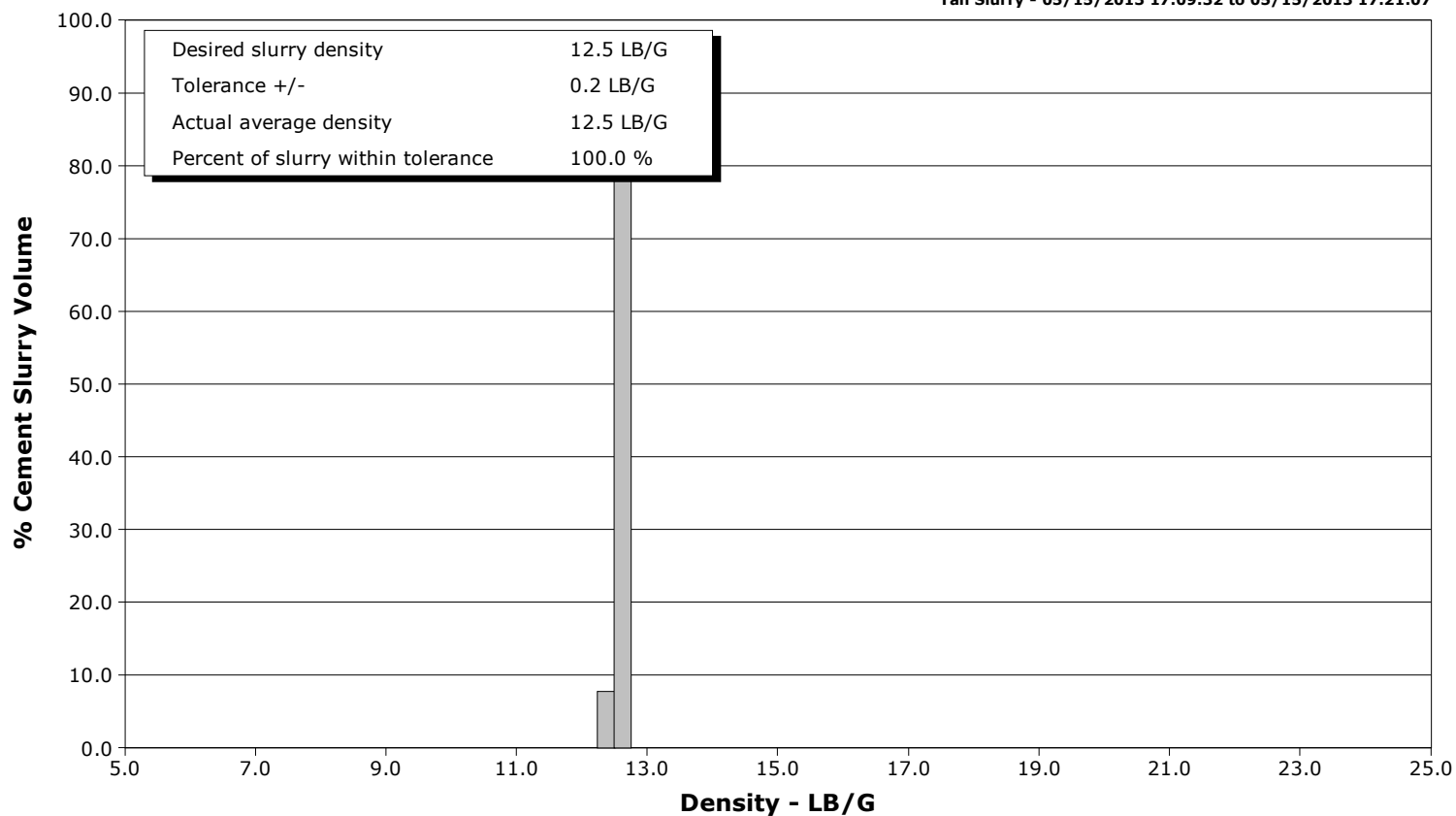
Well SGU 8507D-23
Field Story Gulch
Engineer Travis Willardson / Cole Fairbrook
Country United States

Client EnCana
SIR No. CAIO-00137
Job Type 9 5/8 Surface
Job Date 05-15-2013

Lead Slurry - 05/15/2013 16:03:32 to 05/15/2013 17:04:55



Tail Slurry - 05/15/2013 17:09:32 to 05/15/2013 17:21:07





Cementing Service Report

				Customer EnCana		Job Number CAIO-00137			
Well SGU 8507D-23 8507D-23			Location (legal) DL24		Schlumberger Location Grand Junction		Job Start May/15/2013		
Field Story Gulch		Formation Name/Type		Deviation	Bit Size		Well MD		Well TVD
County Garfield		State/Province Colorado		BHP	BHST	BHCT	Pore Press. Gradient		
Well Master 0631465728		API/UWI							
Rig Name Patterson 330	Drilled For Gas	Service Via Land	Casing/Liner						
	Depth,	Size,	Weight,	Grade	Thread				
Offshore Zone	Well Class New	Well Type Development							
Drilling Fluid Type		Max. Density	Plastic Viscosity	Tubing/Drill Pipe					
	Depth,	Size,	Weight,	Grade	Thread				
Service Line Cementing	Job Type 9 5/8 Surface								
Max. Allowed Tub. Press	Max. Allowed Ann. Press	WH Connection Single Cement head	Perforations/Open Hole						
			Top,	Bottom,		No. of Shots	Total Interval		
							Diameter		
			Treat Down	Displacement	Packer Type	Packer Depth			
			Tubing Vol.	Casing Vol.	Annular Vol.	Openhole Vol.			
Casing/Tubing Secured	<input type="checkbox"/>	1 Hole Vol. Circulated prior to Cement	<input type="checkbox"/>	Casing Tools		Squeeze Job			
Lift Pressure			Shoe Type			Squeeze Type			
Pipe Rotated		<input type="checkbox"/>	Pipe Reciprocated		<input type="checkbox"/>	Shoe Depth		Tool Type	
No. Centralizers		Top Plugs	Bottom Plugs	Stage Tool Type		Tool Depth			
Cement Head Type			Stage Tool Depth		Tail Pipe Size				
Job Scheduled For May/15/2013		Arrived on Location May/15/2013	Leave Location May/15/2013	Collar Type		Tail Pipe Depth			
			Collar Depth		Sqz. Total Vol.				
Date	Time 24-hr clock	Treating Pressure PSI	Flow Rate B/M	Density LB/G	Volume BBL	Message			
01/01/1970	00:00:00					Remark			
01/01/1970	00:00:00					Remark			
01/01/1970	00:00:00					Remark			
01/01/1970	00:00:00					Remark			
05/15/2013	14:33:03					Started Acquisition			
05/15/2013	15:02:58	6	0.0	8.38	0.0				
05/15/2013	15:02:59					Safety Meeting			
05/15/2013	15:02:59					Flow 3 bbl Water			
05/15/2013	15:02:59	5	0.0	8.38	0.0				
05/15/2013	15:03:05					Pressure Test Lines			
05/15/2013	15:03:05	3	0.0	8.38	0.0				
05/15/2013	15:03:08					Low / High Pressure Test Good			
05/15/2013	15:03:08	4	0.0	8.38	0.0				
05/15/2013	15:03:09					Pumping 80 bbl PressureNET			
05/15/2013	15:03:09	4	0.0	8.38	0.0				
05/15/2013	15:05:00	3	0.0	8.38	0.0				
05/15/2013	15:10:00	2962	0.0	8.43	2.4				
05/15/2013	15:15:00	218	4.1	8.43	13.1				
05/15/2013	15:20:00	200	4.0	8.43	33.9				
05/15/2013	15:21:28					Full Returns 4 bbl/min			
05/15/2013	15:21:28	167	4.0	8.42	39.9				

Well			Field		Job Start	Customer	Job Number
SGU 8507D-23 8507D-23			Story Gulch		May/15/2013	EnCana	CAIO-00137
Date	Time 24-hr clock	Treating Pressure PSI	Flow Rate B/M	Density LB/G	Volume BBL	Message	
05/15/2013	15:29:32					Pumping 10 bbl Water	
05/15/2013	15:29:32	197	5.8	8.37	72.2		
05/15/2013	15:30:00	209	5.9	9.04	74.9		
05/15/2013	15:30:32					Pumping 20 bbl S001	
05/15/2013	15:30:32	216	5.8	9.13	78.0		
05/15/2013	15:33:47					Pumping 10 bbl Water	
05/15/2013	15:33:47	262	6.5	8.37	97.5		
05/15/2013	15:35:00	260	6.5	8.37	105.4		
05/15/2013	15:35:01					Pumping 30 bbl ZONELOCK	
05/15/2013	15:35:01	278	6.5	8.37	105.5		
05/15/2013	15:40:00	122	4.8	9.83	131.6		
05/15/2013	15:42:25					Pumping 10 bbl Water	
05/15/2013	15:42:25	229	4.9	8.38	143.3		
05/15/2013	15:42:26					Pumping Mudpush	
05/15/2013	15:42:26	247	4.9	8.38	143.4		
05/15/2013	15:45:00					Full Returns 2.5 bbl/min	
05/15/2013	15:45:00	51	2.9	8.95	153.0		
05/15/2013	15:50:00	109	5.6	8.79	173.2		
05/15/2013	15:55:00	53	2.3	8.51	194.4		
05/15/2013	16:00:00	62	3.4	8.48	211.7		
05/15/2013	16:03:32					Start Mixing Lead Slurry	
05/15/2013	16:03:32	457	7.6	9.15	232.1		
05/15/2013	16:05:00	533	7.8	9.21	243.4		
05/15/2013	16:06:02					Dry Sample 014298	
05/15/2013	16:06:02	510	7.8	9.20	251.5		
05/15/2013	16:08:00					Wet Sample 9.0 ppg	
05/15/2013	16:08:00	522	7.9	9.20	267.0		
05/15/2013	16:10:00	522	7.9	9.18	282.7		
05/15/2013	16:15:00	577	7.9	9.22	322.3		
05/15/2013	16:20:00	558	7.9	9.21	361.8		
05/15/2013	16:25:00	518	7.9	9.13	401.5		
05/15/2013	16:30:00	533	7.9	9.17	441.2		
05/15/2013	16:32:57					Full Returns 8 bbl/min	
05/15/2013	16:32:57	506	7.9	9.25	464.6		
05/15/2013	16:35:00	481	7.9	9.28	480.9		
05/15/2013	16:40:00	482	8.0	9.26	520.6		
05/15/2013	16:45:00	508	8.0	9.24	560.3		
05/15/2013	16:50:00	456	8.0	9.14	600.0		
05/15/2013	16:52:46					400 bbl Slurry Awal Mudpush To Surface	
05/15/2013	16:52:46	483	7.9	9.03	622.0		
05/15/2013	16:55:00	525	8.0	9.01	639.7		
05/15/2013	17:00:00	508	7.9	9.04	679.4		
05/15/2013	17:04:55					End Lead Slurry	
05/15/2013	17:04:55	510	7.9	9.11	718.5		
05/15/2013	17:05:00	348	7.7	9.11	719.2		
05/15/2013	17:07:25					Good Slurry To Surface	
05/15/2013	17:07:25	360	5.1	12.68	731.0		
05/15/2013	17:09:32					Start Mixing Tail Slurry	
05/15/2013	17:09:32	281	5.1	12.48	741.8		
05/15/2013	17:09:50					8 bbl Into Tail	
05/15/2013	17:09:50	276	5.1	12.46	743.3		
05/15/2013	17:10:00	280	5.1	12.52	744.2		
05/15/2013	17:10:32					Dry Sample 014323	
05/15/2013	17:10:32	400	6.6	12.55	747.4		

Well			Field		Job Start	Customer	Job Number
SGU 8507D-23 8507D-23			Story Gulch		May/15/2013	EnCana	CAIO-00137
Date	Time 24-hr clock	Treating Pressure PSI	Flow Rate B/M	Density LB/G	Volume BBL	Message	
05/15/2013	17:20:00	400	6.5	12.54	809.3		
05/15/2013	17:20:47					Wet Sample 12.5 ppg	
05/15/2013	17:20:47	390	6.5	12.54	814.4		
05/15/2013	17:21:07					End Tail Slurry	
05/15/2013	17:21:07	262	5.1	12.54	816.4		
05/15/2013	17:21:12					Drop Top Plug	
05/15/2013	17:21:12	268	5.1	12.54	816.8		
05/15/2013	17:21:14					Start Displacement	
05/15/2013	17:21:14	245	5.1	12.53	817.0		
05/15/2013	17:21:17					Wash Up On Plug	
05/15/2013	17:21:17	257	5.1	12.52	817.2		
05/15/2013	17:25:00	22	0.0	9.27	826.8		
05/15/2013	17:30:00	340	8.0	8.47	849.3		
05/15/2013	17:33:03					Full Returns	
05/15/2013	17:33:03	298	8.0	8.34	873.7		
05/15/2013	17:35:00	321	8.0	8.36	889.3		
05/15/2013	17:40:00	317	8.0	8.35	929.3		
05/15/2013	17:40:03					350 bbl Slurry To Surface	
05/15/2013	17:40:03	331	8.0	8.36	929.7		
05/15/2013	17:45:00	344	7.9	8.37	969.2		
05/15/2013	17:50:00	399	7.9	8.37	1008.9		
05/15/2013	17:53:17					Full Returns	
05/15/2013	17:53:17	552	7.9	8.37	1034.9		
05/15/2013	17:55:00	605	7.9	8.37	1048.4		
05/15/2013	18:00:00	432	2.5	8.37	1082.8		
05/15/2013	18:04:11					Bump Top Plug 1080 psi	
05/15/2013	18:04:11	1062	0.0	8.37	1092.6		
05/15/2013	18:04:12					End Displacement	
05/15/2013	18:04:12	1067	0.0	8.37	1092.6		
05/15/2013	18:04:49					Hold For 10 Min	
05/15/2013	18:04:49	1061	0.0	8.37	1092.6		
05/15/2013	18:05:00	1061	0.0	8.37	1092.6		
05/15/2013	18:10:00	1069	0.0	8.37	1092.6		
05/15/2013	18:15:00	1079	0.0	8.37	1092.6		
05/15/2013	18:20:00	30	3.5	8.37	1093.4		
05/15/2013	18:25:00	18	0.0	8.37	1094.7		
05/15/2013	18:30:00	21	0.0	8.37	1094.7		
05/15/2013	18:34:50					Bleed Off / Floats Held	

Well SGU 8507D-23 8507D-23	Field Story Gulch	Job Start May/15/2013	Customer EnCana	Job Number CAIO-00137
-------------------------------	----------------------	--------------------------	--------------------	--------------------------

Post Job Summary

Average Pump Rates,					Volume of Fluid Injected,			
Slurry	N2	Mud	Maximum Rate		Total Slurry	Mud	Spacer	N2
Treating Pressure Summary,					Breakdown Fluid			
Maximum	Final	Average	Bump Plug to	Breakdown	Type	Volume		Density
Avg. N2 Percent	Designed Slurry Volume		Displacement	Mix Water Temp	Cement Circulated to Surface?	<input type="checkbox"/>		
					Washed Thru Perfs	<input type="checkbox"/>		
Customer or Authorized Representative			Schlumberger Supervisor			Circulation Lost	<input type="checkbox"/>	
Randy Burke			Travis Willardson / Cole Fairbrook			-	Job Completed <input type="checkbox"/>	
						-	-	