



WHITING OIL & GAS CORP.

LOCATION DRAWING FOR

RAZOR #11H-1413A, #11H-0213A, #11H-1415A, #11H-0215A, #11H-0216B & #11H-1416B ON EXISTING RAZOR #11-0241H PAD
SECTION 11, T10N, R58W, 6th P.M.
SE 1/4 NE 1/4

SCALE: 1" = 300'

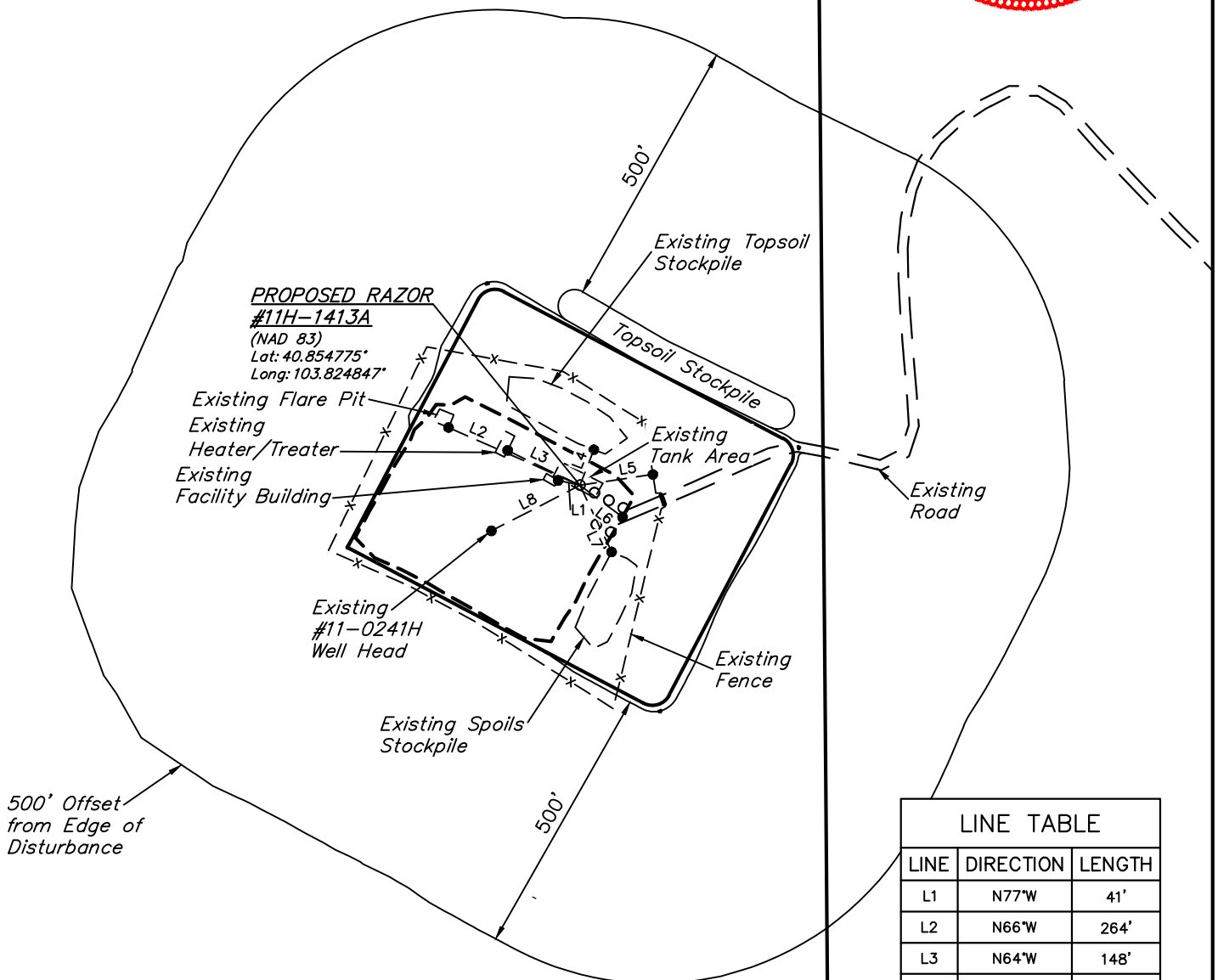
DATE: 06-04-13

DRAWN BY: J.S.

REV: 10-11-13 B.D.H.



SECTION 11
SECTION 12



LINE TABLE

LINE	DIRECTION	LENGTH
L1	N77°W	41'
L2	N66°W	264'
L3	N64°W	148'
L4	N21°E	70'
L5	N81°E	136'
L6	S53°E	98'
L7	S25°E	136'
L8	S63°W	183'