

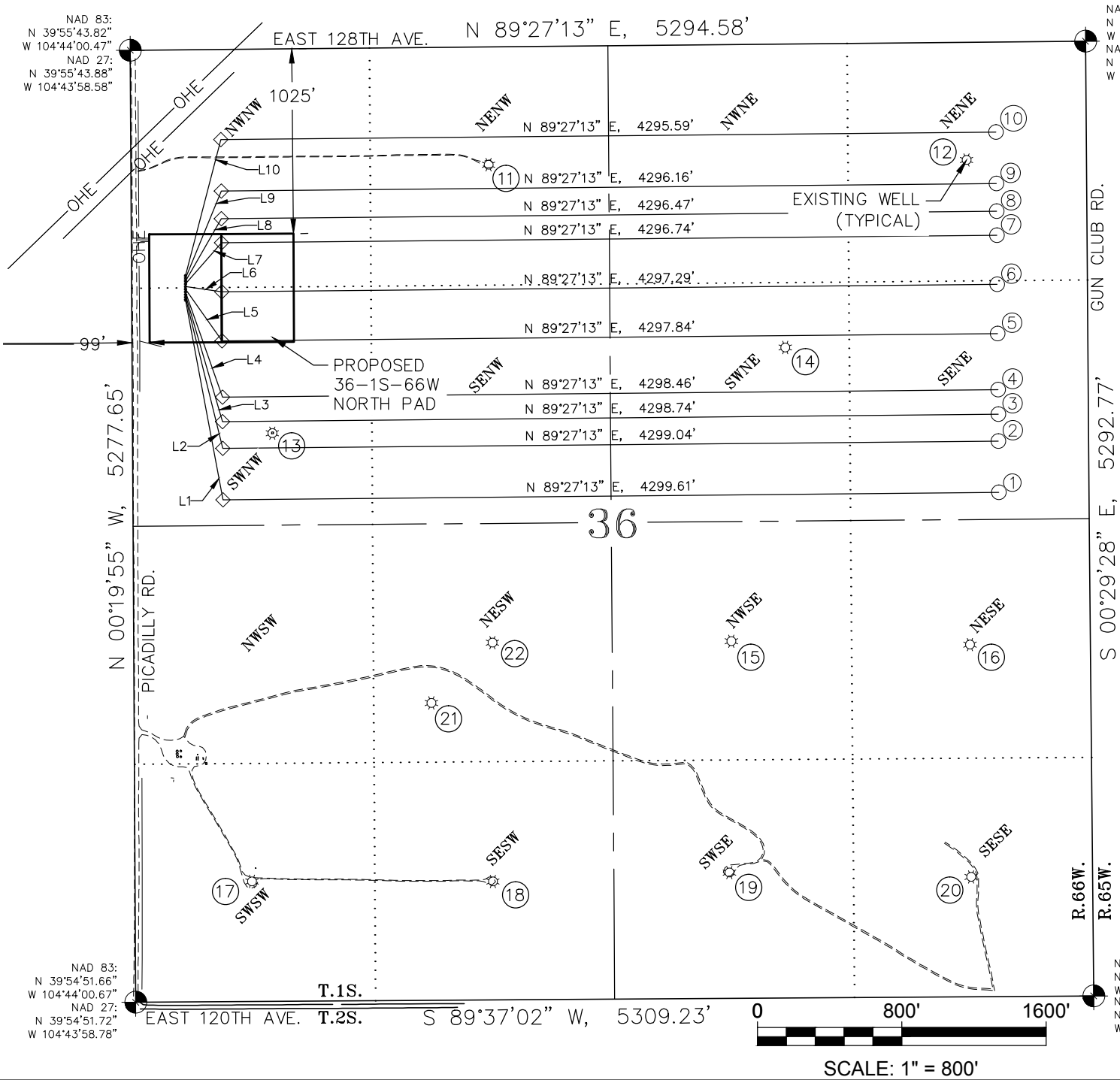
z:\land projects 2013\bill barrett corp east\section 36 1s 66w\north pad\dwg\36-1s-66w north horizontal offset.dwg 9/16/2013 12:42 PM

LINE TABLE		
LINE #	BEARING	DISTANCE
L1	S10°37'09"E	1126.88
L2	S13°49'25"E	862.57
L3	S16°16'06"E	732.93
L4	S19°21'09"E	617.48
L5	S35°17'54"E	351.15
L6	S81°55'13"E	203.43
L7	N41°11'42"E	303.54
L8	N29°54'19"E	399.61
L9	N22°16'35"E	523.47
L10	N14°37'33"E	779.67

ENTITY	DISTANCE
BUILDING	1009 FT
BUILDING UNIT	1557 FT
HIGH OCCUPANCY BUILDING UNIT	4237 FT
DESIGNATED OUTSIDE ACTIVITY AREA	3218 FT
PUBLIC ROAD	270 FT
ABOVE GROUND UTILITY	256 FT
RAILROAD	14562 FT
PROPERTY LINE	299 FT

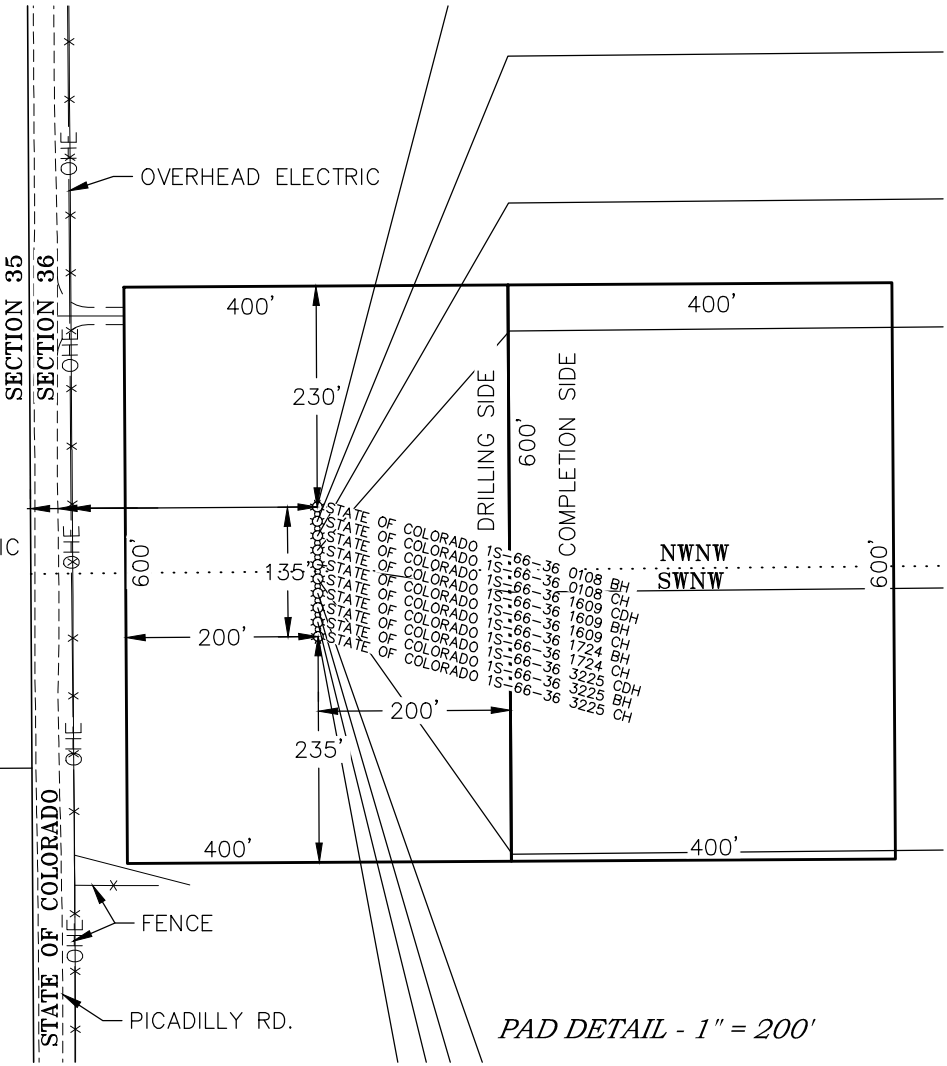
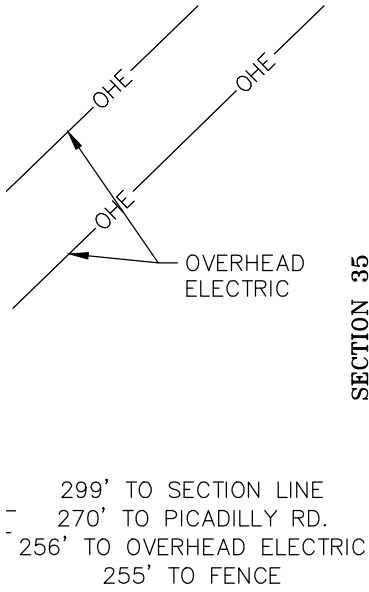
SEE SHEET 2 FOR WELL LOCATION TABLES

HORIZONTAL OFFSET EXHIBIT
STATE OF COLORADO 36-1S-66W NORTH
NAD 83/NAD 27 COLORADO NORTH ZONE



LEGEND

- FIELD LOCATED SECTION CORNER
- SURFACE HOLE LOCATION
- ENTRY POINT
- BOTTOM HOLE LOCATION



ECLIPSE
Surveying, Inc.

230 MAIN STREET, FORT MORGAN, CO 80701
(970) 370-2263

REV. DATE:	----
SCALE:	1" = 800'
DATE:	9/13/13
SHEET:	1 OF 2
PROJECT:	36-1S66W
DFT:	TAB



Bill Barrett Corporation

NW1/4, SECTION 36
T. 1 S., R. 66 W. of the 6th. P.M.
ADAMS COUNTY, COLORADO

z:\land projects 2013\bill barrett corp east\section 36 1s 66w\north pad\dwg\36-1s-66w north horizontal offset.dwg 9/16/2013 12:43 PM

HORIZONTAL OFFSET EXHIBIT SHEET 2
WELL LOCATION TABLES
STATE OF COLORADO 36-1S-66W NORTH
NAD 83/NAD 27 COLORADO NORTH ZONE

SURFACE HOLE LOCATIONS								ENTRY POINT LOCATIONS						BOTTOM HOLE LOCATIONS					
	WELL NAME	FNL	FWL	NORTHING	EASTING	LAT NAD 83	LONG NAD 83	FNL	FWL	NORTHING	EASTING	LAT NAD 83	LONG NAD 83	FNL	FEL	NORTHING	EASTING	LAT NAD 83	LONG NAD 83
1	STATE OF COLORADO 1S-66-36 3225 CH	1388	299	1216469.3	3215275.7	N 39°55'30.11"	W 104°43'56.69"	2497	500	1215361.7	3215483.4	N 39°55'19.15"	W 104°43'54.15"	2497	500	1215402.7	3219782.8	N 39°55'19.18"	W 104°42'58.96"
2	STATE OF COLORADO 1S-66-36 3225 BH	1373	299	1216484.3	3215275.7	N 39°55'30.26"	W 104°43'56.69"	2212	500	1215646.7	3215481.8	N 39°55'21.96"	W 104°43'54.14"	2212	500	1215687.7	3219780.6	N 39°55'22.00"	W 104°42'58.96"
3	STATE OF COLORADO 1S-66-36 3225 CDH	1358	299	1216499.3	3215275.6	N 39°55'30.41"	W 104°43'56.69"	2063	500	1215795.7	3215480.9	N 39°55'23.44"	W 104°43'54.13"	2063	500	1215836.7	3219779.4	N 39°55'23.47"	W 104°42'58.95"
4	STATE OF COLORADO 1S-66-36 1724 CH	1343	299	1216514.3	3215275.5	N 39°55'30.56"	W 104°43'56.69"	1927	500	1215931.7	3215480.1	N 39°55'24.78"	W 104°43'54.13"	1927	500	1215972.7	3219778.4	N 39°55'24.81"	W 104°42'58.95"
5	STATE OF COLORADO 1S-66-36 1724 BH	1328	299	1216529.3	3215275.4	N 39°55'30.70"	W 104°43'56.69"	1616	500	1216242.7	3215478.3	N 39°55'27.85"	W 104°43'54.11"	1616	500	1216283.7	3219775.9	N 39°55'27.89"	W 104°42'58.95"
6	STATE OF COLORADO 1S-66-36 1609 CH	1313	299	1216544.3	3215275.3	N 39°55'30.85"	W 104°43'56.69"	1343	500	1216515.7	3215476.7	N 39°55'30.55"	W 104°43'54.10"	1343	500	1216556.7	3219773.8	N 39°55'30.59"	W 104°42'58.94"
7	STATE OF COLORADO 1S-66-36 1609 BH	1298	299	1216559.3	3215275.2	N 39°55'31.00"	W 104°43'56.69"	1071	500	1216787.7	3215475.1	N 39°55'33.24"	W 104°43'54.09"	1071	500	1216828.7	3219771.7	N 39°55'33.27"	W 104°42'58.94"
8	STATE OF COLORADO 1S-66-36 1609 CDH	1283	299	1216574.3	3215275.1	N 39°55'31.15"	W 104°43'56.69"	938	500	1216920.7	3215474.4	N 39°55'34.55"	W 104°43'54.09"	938	500	1216961.7	3219770.7	N 39°55'34.59"	W 104°42'58.94"
9	STATE OF COLORADO 1S-66-36 0108 CH	1268	299	1216589.3	3215275.1	N 39°55'31.30"	W 104°43'56.69"	785	500	1217073.7	3215473.5	N 39°55'36.07"	W 104°43'54.08"	785	500	1217114.7	3219769.5	N 39°55'36.10"	W 104°42'58.94"
10	STATE OF COLORADO 1S-66-36 0108 BH	1253	299	1216604.3	3215275.0	N 39°55'31.44"	W 104°43'56.68"	500	500	1217358.7	3215471.8	N 39°55'38.88"	W 104°43'54.07"	500	500	1217399.7	3219767.2	N 39°55'38.92"	W 104°42'58.93"

SURFACE HOLE LOCATIONS				ENTRY POINT		BOTTOM HOLE	
	WELL NAME	LAT NAD 27	LONG NAD 27	LAT NAD 27	LONG NAD 27	LAT NAD 27	LONG NAD 27
1	STATE OF COLORADO 1S-66-36 3225 CH	N 39°55'30.17"	W 104°43'54.80"	N 39°55'19.20"	W 104°43'52.26"	N 39°55'19.24"	W 104°42'57.07"
2	STATE OF COLORADO 1S-66-36 3225 BH	N 39°55'30.31"	W 104°43'54.80"	N 39°55'22.02"	W 104°43'52.25"	N 39°55'22.05"	W 104°42'57.07"
3	STATE OF COLORADO 1S-66-36 3225 CDH	N 39°55'30.46"	W 104°43'54.80"	N 39°55'23.49"	W 104°43'52.24"	N 39°55'23.53"	W 104°42'57.07"
4	STATE OF COLORADO 1S-66-36 1724 CH	N 39°55'30.61"	W 104°43'54.80"	N 39°55'24.84"	W 104°43'52.24"	N 39°55'24.87"	W 104°42'57.06"
5	STATE OF COLORADO 1S-66-36 1724 BH	N 39°55'30.76"	W 104°43'54.80"	N 39°55'27.91"	W 104°43'52.22"	N 39°55'27.94"	W 104°42'57.06"
6	STATE OF COLORADO 1S-66-36 1609 CH	N 39°55'30.91"	W 104°43'54.80"	N 39°55'30.61"	W 104°43'52.21"	N 39°55'30.64"	W 104°42'57.06"
7	STATE OF COLORADO 1S-66-36 1609 BH	N 39°55'31.05"	W 104°43'54.80"	N 39°55'33.30"	W 104°43'52.20"	N 39°55'33.33"	W 104°42'57.05"
8	STATE OF COLORADO 1S-66-36 1609 CDH	N 39°55'31.20"	W 104°43'54.80"	N 39°55'34.61"	W 104°43'52.20"	N 39°55'34.64"	W 104°42'57.05"
9	STATE OF COLORADO 1S-66-36 0108 CH	N 39°55'31.35"	W 104°43'54.80"	N 39°55'36.12"	W 104°43'52.19"	N 39°55'36.16"	W 104°42'57.05"
10	STATE OF COLORADO 1S-66-36 0108 BH	N 39°55'31.50"	W 104°43'54.79"	N 39°55'38.94"	W 104°43'52.18"	N 39°55'38.97"	W 104°42'57.05"

EXISTING WELL LOCATIONS									
	WELL NAME	FNL	FWL	NORTHING	EASTING	LAT NAD 83	LONG NAD 83	LAT NAD 27	LONG NAD 27
11	CO STATE A 21-36-1-66	653	1982	1217219.4	3216954.9	N 39°55'37.38"	W 104°43'35.05"	N 39°55'37.43"	W 104°43'33.16"
12	CO STATE A 41-36-1-36	653	664 FEL	1217245.4	3219604.0	N 39°55'37.41"	W 104°43'01.05"	N 39°55'37.46"	W 104°42'59.16"
13	CO STATE A5	2130	775	1215731.1	3215756.7	N 39°55'22.77"	W 104°43'50.60"	N 39°55'22.83"	W 104°43'48.71"
14	CO STATE A 1-36	1682	1677 FEL	1216206.3	3218599.4	N 39°55'27.23"	W 104°43'14.06"	N 39°55'27.28"	W 104°43'12.17"
15	CO STATE 33-36	1979 FSL	1990 FEL	1214577.8	3218300.5	N 39°55'11.16"	W 104°43'18.08"	N 39°55'11.21"	W 104°43'16.19"
16	CO STATE A6	1952 FSL	667 FEL	1214559.0	3219623.1	N 39°55'10.86"	W 104°43'01.11"	N 39°55'10.91"	W 104°42'59.22"
17	CO STATE A 4-36-1-66	666 FSL	648	1213246.5	3215643.7	N 39°54'58.23"	W 104°43'52.33"	N 39°54'58.28"	W 104°43'50.43"
18	CO STATE A 24-36-1-66	657 FSL	1983	1213246.1	3216979.1	N 39°54'58.11"	W 104°43'35.19"	N 39°54'58.17"	W 104°43'33.30"
19	CO STATE A3	697 FSL	2012 FEL	1213295.5	3218290.0	N 39°54'58.49"	W 104°43'18.36"	N 39°54'58.54"	W 104°43'16.47"
20	CO STATE 44-36	664 FSL	673 FEL	1213271.7	3219629.0	N 39°54'58.13"	W 104°43'01.18"	N 39°54'58.19"	W 104°42'59.29"
21	**CO STATE A2	1649 FSL	1648 FEL	1214235.8	3216638.2	N 39°55'07.92"	W 104°43'39.45"	N 39°55'07.98"	W 104°43'37.56"
22	**CO STATE A23-36	1981 FSL	1988 FEL	1214570.0	3216976.2	N 39°55'11.20"	W 104°43'35.08"	N 39°55'11.25"	W 104°43'33.19"

** = SURFACE LOCATION BURIED. COORDINATES FROM COGCC RECORDS.



ECLIPSE
Surveying, Inc.
230 MAIN STREET, FORT MORGAN, CO 80701
(970) 370-2263

REV. DATE: ----
SCALE: _____
DATE: 9/13/13
SHEET: 2 OF 2
PROJECT: 36-1S66W
DFT: TAB



Bill Barrett Corporation

NW1/4, SECTION 36
T. 1 S., R. 66 W. of the 6th. P.M.
ADAMS COUNTY, COLORADO