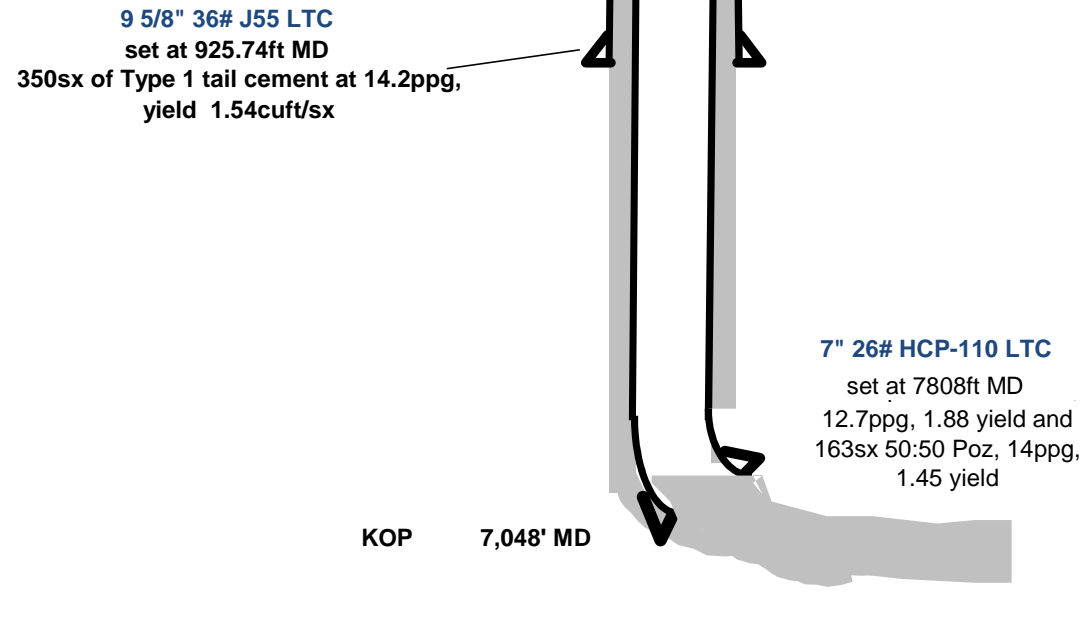


Howard 30N-21HZ

API: 0512336795

Section 21 T1N R67W



Howard 30N-21HZX

API: 0512336795
Section 21 T1N R67W

9 5/8" 36# J55 LTC
set at 925.74ft MD
350sx of Type 1 tail cement at 14.2ppg,
yield 1.54cuft/sx

7" 26# HCP-110 LTC
set at 7808ft MD
12.7ppg, 1.88 yield and
163sx 50:50 Poz, 14ppg,
1.45 yield

KOP 7,048' MD

Sidetrack confirmed at 7912' MD

TD
12,103' MD
6.125" hole