

KERR-MCGEE OIL & GAS ONSHORE LP

Location: COLORADO Slot: SLOT#23 JELTS 37N-19HZ (275°FNL & 1828°FEL, SEC.19)
Field: WELD COUNTY (KERR MCGEE) Well: JELTS 37N-19HZ
Facility: SEC.19-T1N-R67W Wellbore: JELTS 37N-19HZ PWB

Plot reference wellpath is JELTS 37N-19HZ (REV-A.0) PWP

True vertical depths are referenced to ENSIGN 145 (RKB)

Measured depths are referenced to ENSIGN 145 (RKB)

ENSIGN 145 (RKB) to Mean Sea Level: 5160 feet

Mean Sea Level to Mud line (At Slot: SLOT#23 JELTS 37N-19HZ (275°FNL & 1828°FEL, SEC.19)): 0 feet

Coordinates are in feet referenced to Slot

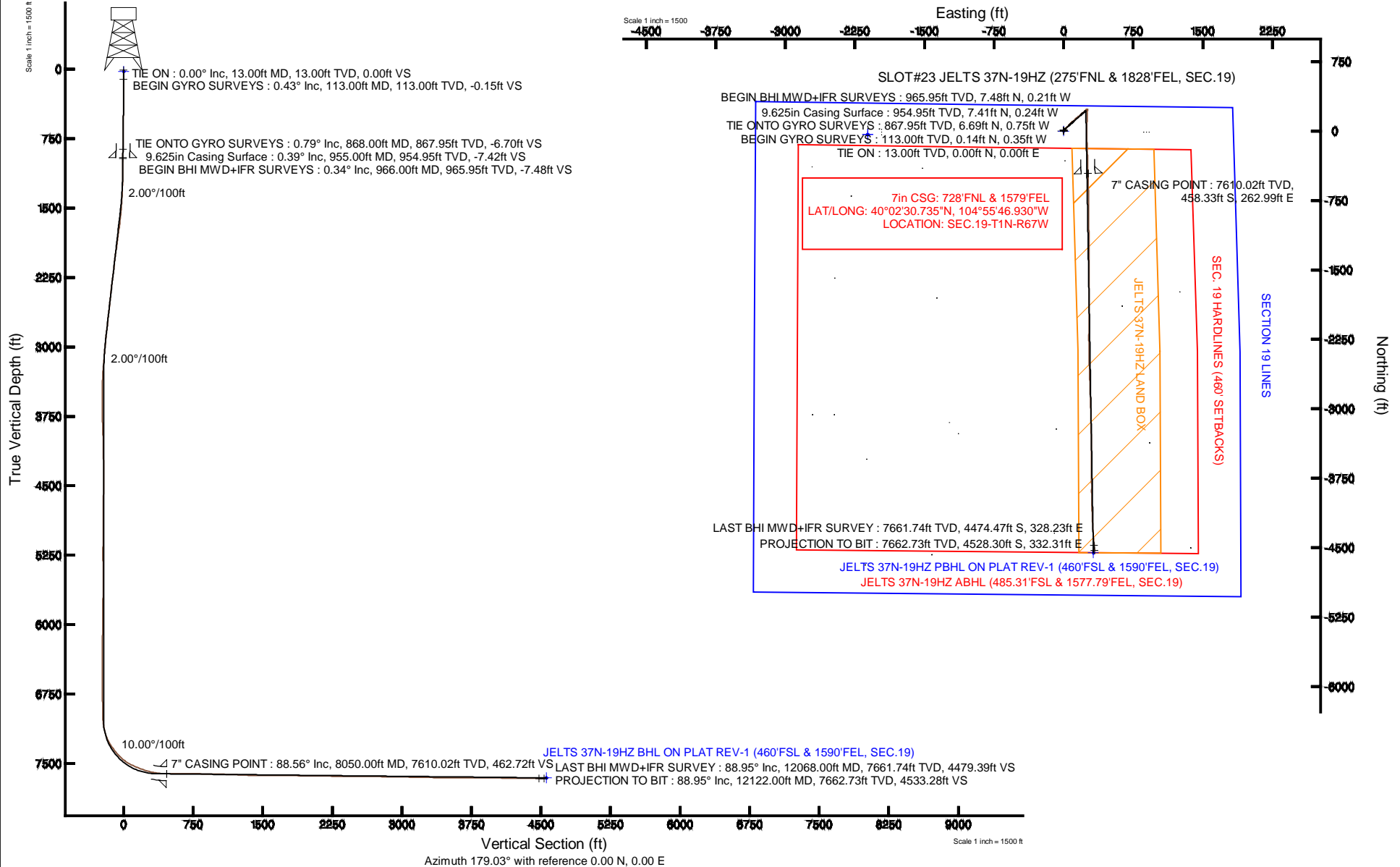
Grid System: NAD83 / Lambert Colorado SP, Northern Zone (501), US feet

North Reference: True north

Scale: True distance

Depths are in feet

Created by: robale01 on 19/Jul/2013





Actual Wellpath Report

JELTS 37N-19HZ AWP

Page 1 of 6



REFERENCE WELLPATH IDENTIFICATION

Operator	KERR-MCGEE OIL & GAS ONSHORE LP	Slot	SLOT#23 JELTS 37N-19HZ (275'FNL & 1828'FEL, SEC.19)
Area	COLORADO	Well	JELTS 37N-19HZ
Field	WELD COUNTY (KERR MCGEE)	Wellbore	JELTS 37N-19HZ AWP
Facility	SEC.19-T1N-R67W		

REPORT SETUP INFORMATION

Projection System	NAD83 / Lambert Colorado SP, Northern Zone (501), US feet	Software System	WellArchitect® 4.0.0
North Reference	True	User	Robiale01
Scale	0.999963	Report Generated	19/Jul/2013 at 10:55
Convergence at slot	n/a	Database/Source file	WA_ANADARKO/JELTS_37N-19HZ_AWP.xml

WELLPATH LOCATION

	Local coordinates		Grid coordinates		Geographic coordinates	
	North[ft]	East[ft]	Easting[US ft]	Northing[US ft]	Latitude	Longitude
Slot Location	37.83	2112.35	3159405.73	1259069.34	40°02'35.264"N	104°55'50.311"W
Facility Reference Pt			3157293.75	1259018.13	40°02'34.891"N	104°56'17.471"W
Field Reference Pt			3197771.84	1268891.29	40°04'09.600"N	104°47'36.000"W

WELLPATH DATUM

Calculation method	Minimum curvature	ENSIGN 145 (RKB) to Facility Vertical Datum	5160.00ft
Horizontal Reference Pt	Slot	ENSIGN 145 (RKB) to Mean Sea Level	5160.00ft
Vertical Reference Pt	ENSIGN 145 (RKB)	ENSIGN 145 (RKB) to Mud Line at Slot (SLOT#23 JELTS 37N-19HZ (275'FNL & 1828'FEL, SEC.19))	5160.00ft
MD Reference Pt	ENSIGN 145 (RKB)	Section Origin	N 0.00, E 0.00 ft
Field Vertical Reference	Mean Sea Level	Section Azimuth	179.03°



Actual Wellpath Report

JELTS 37N-19HZ AWP

Page 2 of 6



REFERENCE WELLPATH IDENTIFICATION

Operator	KERR-MCGEE OIL & GAS ONSHORE LP	Slot	SLOT#23 JELTS 37N-19HZ (275'FNL & 1828'FEL, SEC.19)
Area	COLORADO	Well	JELTS 37N-19HZ
Field	WELD COUNTY (KERR MCGEE)	Wellbore	JELTS 37N-19HZ AWB
Facility	SEC.19-T1N-R67W		

WELLPATH DATA (124 stations) † = interpolated/extrapolated station

MD [ft]	Inclination [°]	Azimuth [°]	TVD [ft]	Vert Sect [ft]	North [ft]	East [ft]	Latitude	Longitude	DLS [°/100ft]	Comments
0.00†	0.000	292.270	0.00	0.00	0.00	0.00	40°02'35.264"N	104°55'50.311"W	0.00	
13.00	0.000	292.270	13.00	0.00	0.00	0.00	40°02'35.264"N	104°55'50.311"W	0.00	TIE ON
113.00	0.430	292.270	113.00	-0.15	0.14	-0.35	40°02'35.265"N	104°55'50.315"W	0.43	BEGIN GYRO SURVEYS
213.00	0.410	266.640	213.00	-0.28	0.26	-1.05	40°02'35.267"N	104°55'50.325"W	0.19	
313.00	0.300	301.760	312.99	-0.41	0.38	-1.63	40°02'35.268"N	104°55'50.332"W	0.24	
413.00	0.480	5.550	412.99	-0.97	0.93	-1.81	40°02'35.273"N	104°55'50.334"W	0.44	
513.00	1.030	10.810	512.98	-2.26	2.23	-1.60	40°02'35.286"N	104°55'50.332"W	0.55	
613.00	0.750	12.660	612.97	-3.78	3.76	-1.29	40°02'35.301"N	104°55'50.328"W	0.28	
713.00	0.720	12.460	712.96	-5.02	5.01	-1.01	40°02'35.313"N	104°55'50.324"W	0.03	
813.00	0.580	351.560	812.96	-6.14	6.12	-0.95	40°02'35.325"N	104°55'50.323"W	0.27	
868.00	0.790	39.850	867.95	-6.70	6.69	-0.75	40°02'35.330"N	104°55'50.321"W	1.08	TIE ONTO GYRO SURVEYS
966.00	0.340	21.230	965.95	-7.48	7.48	-0.21	40°02'35.338"N	104°55'50.314"W	0.49	BEGIN BHI MWD+IFR SURVEYS
1065.00	0.210	307.340	1064.95	-7.87	7.86	-0.25	40°02'35.342"N	104°55'50.314"W	0.35	
1157.00	1.500	38.820	1156.94	-8.90	8.90	0.37	40°02'35.352"N	104°55'50.306"W	1.65	
1248.00	3.070	54.330	1247.86	-11.20	11.25	3.10	40°02'35.375"N	104°55'50.271"W	1.84	
1340.00	4.000	42.810	1339.69	-14.92	15.04	7.28	40°02'35.413"N	104°55'50.217"W	1.27	
1431.00	5.040	46.530	1430.40	-19.91	20.12	12.34	40°02'35.463"N	104°55'50.152"W	1.19	
1523.00	7.130	48.030	1521.88	-26.39	26.72	19.52	40°02'35.528"N	104°55'50.060"W	2.28	
1615.00	9.460	48.150	1612.91	-35.08	35.58	29.39	40°02'35.616"N	104°55'49.933"W	2.53	
1706.00	11.190	46.920	1702.43	-45.90	46.61	41.42	40°02'35.725"N	104°55'49.778"W	1.92	
1798.00	10.900	44.050	1792.73	-58.03	58.95	53.98	40°02'35.847"N	104°55'49.617"W	0.68	
1890.00	11.040	41.490	1883.05	-70.68	71.80	65.87	40°02'35.974"N	104°55'49.464"W	0.55	
1984.00	10.900	45.450	1975.33	-83.44	84.78	78.16	40°02'36.102"N	104°55'49.306"W	0.82	
2079.00	10.350	47.820	2068.71	-95.26	96.81	90.89	40°02'36.221"N	104°55'49.142"W	0.74	
2173.00	10.270	45.300	2161.19	-106.61	108.38	103.10	40°02'36.335"N	104°55'48.985"W	0.49	
2268.00	10.710	49.340	2254.60	-118.11	120.09	115.82	40°02'36.451"N	104°55'48.822"W	0.90	
2363.00	10.250	47.490	2348.02	-129.35	131.55	128.75	40°02'36.564"N	104°55'48.656"W	0.60	
2458.00	9.960	54.450	2441.55	-139.62	142.04	141.66	40°02'36.668"N	104°55'48.490"W	1.32	
2553.00	9.740	51.920	2535.15	-149.13	151.77	154.67	40°02'36.764"N	104°55'48.322"W	0.51	
2648.00	10.730	50.100	2628.63	-159.53	162.40	167.78	40°02'36.869"N	104°55'48.154"W	1.10	
2743.00	10.040	48.490	2722.08	-170.47	173.56	180.77	40°02'36.979"N	104°55'47.987"W	0.79	
2838.00	9.240	45.220	2815.74	-181.13	184.42	192.38	40°02'37.086"N	104°55'47.837"W	1.02	
2932.00	8.850	51.070	2908.57	-190.81	194.28	203.36	40°02'37.184"N	104°55'47.696"W	1.06	
3027.00	8.140	47.820	3002.53	-199.73	203.39	214.03	40°02'37.274"N	104°55'47.559"W	0.90	
3122.00	7.850	47.210	3096.60	-208.49	212.31	223.78	40°02'37.362"N	104°55'47.434"W	0.32	
3217.00	6.480	44.090	3190.86	-216.60	220.57	232.27	40°02'37.444"N	104°55'47.325"W	1.50	
3312.00	4.660	43.770	3285.41	-223.13	227.21	238.67	40°02'37.509"N	104°55'47.242"W	1.92	
3407.00	3.500	32.990	3380.17	-228.28	232.43	242.92	40°02'37.561"N	104°55'47.188"W	1.46	
3499.00	1.330	58.610	3472.08	-231.15	235.34	245.36	40°02'37.590"N	104°55'47.156"W	2.58	
3594.00	3.280	108.360	3567.01	-230.81	235.06	248.88	40°02'37.587"N	104°55'47.111"W	2.76	
3688.00	1.540	136.050	3660.92	-228.99	233.30	252.31	40°02'37.570"N	104°55'47.067"W	2.18	
3783.00	1.260	109.140	3755.90	-227.70	232.04	254.18	40°02'37.557"N	104°55'47.043"W	0.74	
3878.00	2.190	182.210	3850.86	-225.53	229.88	255.10	40°02'37.536"N	104°55'47.031"W	2.30	
3973.00	1.890	193.660	3945.80	-222.20	226.55	254.66	40°02'37.503"N	104°55'47.037"W	0.53	
4068.00	1.290	196.040	4040.76	-219.66	224.00	253.99	40°02'37.478"N	104°55'47.045"W	0.64	



Actual Wellpath Report

JELTS 37N-19HZ AWP

Page 3 of 6



REFERENCE WELLPATH IDENTIFICATION

Operator	KERR-MCGEE OIL & GAS ONSHORE LP	Slot	SLOT#23 JELTS 37N-19HZ (275'FNL & 1828'FEL, SEC.19)
Area	COLORADO	Well	JELTS 37N-19HZ
Field	WELD COUNTY (KERR MCGEE)	Wellbore	JELTS 37N-19HZ AWB
Facility	SEC.19-T1N-R67W		

WELLPATH DATA (124 stations) † = interpolated/extrapolated station

MD [ft]	Inclination [°]	Azimuth [°]	TVD [ft]	Vert Sect [ft]	North [ft]	East [ft]	Latitude	Longitude	DLS [°/100ft]	Comments
4163.00	1.220	218.550	4135.74	-217.86	222.18	253.07	40°02'37.460"N	104°55'47.057"W	0.52	
4447.00	0.940	271.340	4419.70	-215.62	219.87	248.85	40°02'37.437"N	104°55'47.111"W	0.35	
4637.00	1.020	308.520	4609.67	-216.76	220.96	245.97	40°02'37.448"N	104°55'47.148"W	0.33	
5016.00	1.280	64.260	4988.63	-220.68	224.90	247.15	40°02'37.486"N	104°55'47.133"W	0.52	
5396.00	1.010	107.470	5368.56	-221.40	225.74	254.16	40°02'37.495"N	104°55'47.043"W	0.23	
5680.00	0.570	61.750	5652.54	-221.25	225.65	257.80	40°02'37.494"N	104°55'46.996"W	0.26	
5965.00	0.980	17.340	5937.51	-224.21	228.65	259.77	40°02'37.524"N	104°55'46.971"W	0.24	
6249.00	0.650	314.480	6221.49	-227.67	232.10	259.35	40°02'37.558"N	104°55'46.976"W	0.32	
6534.00	0.580	324.810	6506.47	-230.01	234.41	257.36	40°02'37.580"N	104°55'47.002"W	0.05	
6819.00	1.600	205.210	6791.44	-227.64	231.99	254.84	40°02'37.557"N	104°55'47.034"W	0.69	
6979.00	1.330	214.370	6951.38	-224.12	228.43	252.84	40°02'37.521"N	104°55'47.060"W	0.22	
7008.00	1.310	206.190	6980.38	-223.55	227.86	252.50	40°02'37.516"N	104°55'47.064"W	0.65	
7056.00	3.390	191.000	7028.33	-221.67	225.97	251.99	40°02'37.497"N	104°55'47.071"W	4.49	
7102.00	7.850	182.740	7074.10	-217.20	221.50	251.58	40°02'37.453"N	104°55'47.076"W	9.83	
7149.00	11.540	180.390	7120.42	-209.30	213.59	251.39	40°02'37.375"N	104°55'47.079"W	7.89	
7197.00	15.680	176.780	7167.06	-198.01	202.31	251.72	40°02'37.263"N	104°55'47.074"W	8.80	
7244.00	20.520	175.340	7211.73	-183.43	187.74	252.75	40°02'37.119"N	104°55'47.061"W	10.34	
7292.00	26.700	177.020	7255.69	-164.24	168.57	253.99	40°02'36.930"N	104°55'47.045"W	12.95	
7339.00	32.380	181.510	7296.57	-141.10	145.42	254.21	40°02'36.701"N	104°55'47.042"W	12.96	
7386.00	35.710	183.590	7335.51	-114.84	119.15	253.02	40°02'36.441"N	104°55'47.058"W	7.50	
7433.00	39.230	183.580	7372.80	-86.34	90.61	251.23	40°02'36.159"N	104°55'47.081"W	7.49	
7481.00	43.590	182.950	7408.79	-54.69	58.92	249.43	40°02'35.846"N	104°55'47.104"W	9.12	
7528.00	47.900	181.800	7441.59	-21.09	25.30	248.05	40°02'35.514"N	104°55'47.122"W	9.34	
7576.00	53.920	180.150	7471.84	16.12	-11.93	247.44	40°02'35.146"N	104°55'47.129"W	12.82	
7623.00	59.210	178.540	7497.73	55.33	-51.14	247.91	40°02'34.759"N	104°55'47.124"W	11.61	
7671.00	65.020	175.900	7520.17	97.71	-93.49	249.99	40°02'34.340"N	104°55'47.097"W	13.04	
7718.00	67.410	177.410	7539.13	140.68	-136.42	252.49	40°02'33.916"N	104°55'47.065"W	5.87	
7766.00	69.750	178.020	7556.65	185.35	-181.06	254.27	40°02'33.475"N	104°55'47.042"W	5.02	
7813.00	71.610	178.500	7572.20	229.69	-225.39	255.62	40°02'33.037"N	104°55'47.024"W	4.07	
7860.00	74.830	178.780	7585.77	274.69	-270.37	256.68	40°02'32.592"N	104°55'47.011"W	6.87	
7907.00	80.020	178.180	7596.00	320.54	-316.22	257.90	40°02'32.139"N	104°55'46.995"W	11.11	
7955.00	83.670	177.730	7602.81	368.04	-363.69	259.60	40°02'31.670"N	104°55'46.973"W	7.66	
8002.00	85.150	177.850	7607.39	414.80	-410.43	261.40	40°02'31.208"N	104°55'46.950"W	3.16	
8050.00†	88.558	178.362	7610.02	462.72	-458.33	262.99	40°02'30.735"N	104°55'46.930"W	7.18	7" CASING POINT
8062.00	89.410	178.490	7610.23	474.71	-470.32	263.32	40°02'30.616"N	104°55'46.925"W	7.18	
8156.00	90.310	179.070	7610.46	568.71	-564.30	265.32	40°02'29.687"N	104°55'46.900"W	1.14	
8251.00	90.360	178.790	7609.91	663.71	-659.28	267.09	40°02'28.749"N	104°55'46.877"W	0.30	
8346.00	89.190	179.440	7610.28	758.71	-754.26	268.56	40°02'27.810"N	104°55'46.858"W	1.41	
8441.00	89.130	179.430	7611.67	853.69	-849.25	269.50	40°02'26.871"N	104°55'46.846"W	0.06	
8536.00	88.930	179.630	7613.28	948.68	-944.23	270.27	40°02'25.933"N	104°55'46.836"W	0.30	
8631.00	88.730	179.520	7615.22	1043.65	-1039.21	270.98	40°02'24.994"N	104°55'46.827"W	0.24	
8726.00	88.120	177.830	7617.83	1138.61	-1134.14	273.17	40°02'24.056"N	104°55'46.799"W	1.89	
8820.00	87.250	179.400	7621.63	1232.53	-1228.04	275.45	40°02'23.128"N	104°55'46.770"W	1.91	
8915.00	87.440	180.280	7626.03	1327.42	-1322.93	275.71	40°02'22.190"N	104°55'46.766"W	0.95	
9010.00	88.640	180.390	7629.28	1422.33	-1417.87	275.16	40°02'21.252"N	104°55'46.773"W	1.27	



Actual Wellpath Report

JELTS 37N-19HZ AWP

Page 4 of 6



REFERENCE WELLPATH IDENTIFICATION

Operator	KERR-MCGEE OIL & GAS ONSHORE LP	Slot	SLOT#23 JELTS 37N-19HZ (275'FNL & 1828'FEL, SEC.19)
Area	COLORADO	Well	JELTS 37N-19HZ
Field	WELD COUNTY (KERR MCGEE)	Wellbore	JELTS 37N-19HZ AWB
Facility	SEC.19-T1N-R67W		

WELLPATH DATA (124 stations)

MD [ft]	Inclination [°]	Azimuth [°]	TVD [ft]	Vert Sect [ft]	North [ft]	East [ft]	Latitude	Longitude	DLS [°/100ft]	Comments
9105.00	89.780	179.950	7630.59	1517.30	-1512.86	274.87	40°02'20.313"N	104°55'46.777"W	1.29	
9200.00	89.960	179.830	7630.80	1612.29	-1607.86	275.06	40°02'19.375"N	104°55'46.775"W	0.23	
9295.00	90.400	180.040	7630.51	1707.28	-1702.86	275.16	40°02'18.436"N	104°55'46.773"W	0.51	
9390.00	89.320	180.840	7630.74	1802.25	-1797.86	274.43	40°02'17.497"N	104°55'46.783"W	1.41	
9485.00	89.250	181.070	7631.92	1897.19	-1892.84	272.85	40°02'16.559"N	104°55'46.803"W	0.25	
9579.00	88.980	179.920	7633.38	1991.14	-1986.82	272.04	40°02'15.630"N	104°55'46.813"W	1.26	
9674.00	89.130	179.850	7634.94	2086.12	-2081.81	272.23	40°02'14.691"N	104°55'46.811"W	0.17	
9769.00	89.500	180.810	7636.08	2181.09	-2176.80	271.68	40°02'13.752"N	104°55'46.818"W	1.08	
9864.00	89.320	179.320	7637.06	2276.06	-2271.79	271.57	40°02'12.814"N	104°55'46.819"W	1.58	
9959.00	88.790	179.470	7638.62	2371.05	-2366.77	272.58	40°02'11.875"N	104°55'46.807"W	0.58	
10054.00	89.320	178.460	7640.19	2466.03	-2461.74	274.29	40°02'10.936"N	104°55'46.785"W	1.20	
10148.00	90.060	178.100	7640.70	2560.02	-2555.70	277.11	40°02'10.008"N	104°55'46.748"W	0.88	
10243.00	89.750	178.070	7640.86	2655.01	-2650.64	280.29	40°02'09.070"N	104°55'46.708"W	0.33	
10338.00	89.590	178.190	7641.40	2750.00	-2745.59	283.39	40°02'08.131"N	104°55'46.668"W	0.21	
10433.00	89.470	178.170	7642.18	2844.98	-2840.54	286.41	40°02'07.193"N	104°55'46.629"W	0.13	
10528.00	89.060	177.870	7643.40	2939.96	-2935.47	289.69	40°02'06.255"N	104°55'46.587"W	0.53	
10623.00	88.240	178.600	7645.64	3034.92	-3030.40	292.61	40°02'05.317"N	104°55'46.549"W	1.16	
10717.00	88.840	179.530	7648.03	3128.89	-3124.36	294.15	40°02'04.388"N	104°55'46.529"W	1.18	
10812.00	88.940	178.810	7649.87	3223.87	-3219.33	295.52	40°02'03.450"N	104°55'46.512"W	0.77	
10907.00	89.190	179.560	7651.42	3318.86	-3314.31	296.87	40°02'02.511"N	104°55'46.494"W	0.83	
11002.00	88.980	179.910	7652.94	3413.84	-3409.29	297.31	40°02'01.572"N	104°55'46.489"W	0.43	
11097.00	89.720	178.670	7654.02	3508.83	-3504.28	298.49	40°02'00.634"N	104°55'46.474"W	1.52	
11192.00	90.150	179.380	7654.13	3603.83	-3599.26	300.11	40°01'59.695"N	104°55'46.453"W	0.87	
11287.00	90.090	179.710	7653.93	3698.83	-3694.26	300.86	40°01'58.756"N	104°55'46.443"W	0.35	
11381.00	89.590	179.700	7654.19	3792.82	-3788.26	301.35	40°01'57.827"N	104°55'46.437"W	0.53	
11476.00	89.620	180.190	7654.85	3887.80	-3883.25	301.44	40°01'56.889"N	104°55'46.436"W	0.52	
11571.00	89.500	178.170	7655.58	3982.80	-3978.24	302.80	40°01'55.950"N	104°55'46.418"W	2.13	
11666.00	89.260	178.460	7656.60	4077.78	-4073.19	305.59	40°01'55.012"N	104°55'46.382"W	0.40	
11761.00	88.940	177.620	7658.10	4172.76	-4168.12	308.84	40°01'54.074"N	104°55'46.341"W	0.95	
11855.00	89.560	176.730	7659.33	4266.70	-4262.00	313.47	40°01'53.146"N	104°55'46.281"W	1.15	
11950.00	89.470	175.970	7660.13	4361.59	-4356.80	319.52	40°01'52.209"N	104°55'46.203"W	0.81	
12045.00	89.070	175.620	7661.34	4456.43	-4451.54	326.48	40°01'51.273"N	104°55'46.114"W	0.56	
12068.00	88.950	175.670	7661.74	4479.39	-4474.47	328.23	40°01'51.046"N	104°55'46.091"W	0.57	LAST BHI MWD+IFR SURVEY
12122.00	88.950	175.670	7662.73	4533.28	-4528.30	332.31	40°01'50.514"N	104°55'46.039"W	0.00	PROJECTION TO BIT



Actual Wellpath Report

JELTS 37N-19HZ AWP

Page 5 of 6



REFERENCE WELLPATH IDENTIFICATION

Operator	KERR-MCGEE OIL & GAS ONSHORE LP	Slot	SLOT#23 JELTS 37N-19HZ (275'FNL & 1828'FEL, SEC.19)
Area	COLORADO	Well	JELTS 37N-19HZ
Field	WELD COUNTY (KERR MCGEE)	Wellbore	JELTS 37N-19HZ AWB
Facility	SEC.19-T1N-R67W		

HOLE & CASING SECTIONS - Ref Wellbore: JELTS 37N-19HZ AWB Ref Wellpath: JELTS 37N-19HZ AWP

String/Diameter	Start MD [ft]	End MD [ft]	Interval [ft]	Start TVD [ft]	End TVD [ft]	Start N/S [ft]	Start E/W [ft]	End N/S [ft]	End E/W [ft]
13.5in Open Hole	13.00	955.00	942.00	13.00	954.95	0.00	0.00	7.41	-0.24
9.625in Casing Surface	13.00	955.00	942.00	13.00	954.95	0.00	0.00	7.41	-0.24
8.75in Open Hole	955.00	8060.00	7105.00	954.95	7610.21	7.41	-0.24	-468.32	263.26
7in Casing Intermediate	13.00	8050.00	8037.00	13.00	7610.02	0.00	0.00	-458.33	262.99
6.125in Open Hole	8060.00	12122.00	4062.00	7610.21	7662.73	-468.32	263.26	-4528.30	332.31

TARGETS

Name	MD [ft]	TVD [ft]	North [ft]	East [ft]	Grid East [US ft]	Grid North [US ft]	Latitude	Longitude	Shape
SECTION 19 LINES		27.00	-37.76	-2112.27	3157293.83	1259018.03	40°02'34.890"N	104°56'17.470"W	polygon
JELTS 37N-19HZ BHL ON PLAT REV-1 (460'FSL & 1590'FEL, SEC.19)		7655.00	-4553.61	320.10	3159755.05	1254518.05	40°01'50.264"N	104°55'46.196"W	point
JELTS 37N-19HZ LAND BOX		7655.00	0.00	0.00	3159405.73	1259069.34	40°02'35.264"N	104°55'50.311"W	polygon
SEC. 19 HARDLINES (460' SETBACKS)		8027.00	-37.76	-2112.27	3157293.83	1259018.03	40°02'34.890"N	104°56'17.470"W	polygon

WELLPATH COMPOSITION - Ref Wellbore: JELTS 37N-19HZ AWB Ref Wellpath: JELTS 37N-19HZ AWP

Start MD [ft]	End MD [ft]	Positional Uncertainty Model	Log Name/Comment	Wellbore
13.00	868.00	Generic gyro - continuous (Standard)	MS ENERGY SERVICES GYRO SURVEYS <113-868>	JELTS 37N-19HZ AWB
868.00	8002.00	NaviTrak (MAGCORR,IFR)	BHI NAVITRAK MWD+IFR 8.75" HOLE <966-8002>	JELTS 37N-19HZ AWB
8002.00	12068.00	NaviTrak (MAGCORR,IFR)	BHI NAVITRAK MWD+IFR 6 1/8" HOLE <8062-12068>	JELTS 37N-19HZ AWB
12068.00	12122.00	Blind Drilling (std)	Projection to bit	JELTS 37N-19HZ AWB



Actual Wellpath Report

JELTS 37N-19HZ AWP

Page 6 of 6



REFERENCE WELLPATH IDENTIFICATION

Operator	KERR-MCGEE OIL & GAS ONSHORE LP	Slot	SLOT#23 JELTS 37N-19HZ (275'FNL & 1828'FEL, SEC.19)
Area	COLORADO	Well	JELTS 37N-19HZ
Field	WELD COUNTY (KERR MCGEE)	Wellbore	JELTS 37N-19HZ AWP
Facility	SEC.19-T1N-R67W		

WELLPATH COMMENTS

MD [ft]	Inclination [°]	Azimuth [°]	TVD [ft]	Comment
13.00	0.000	292.270	13.00	TIE ON
113.00	0.430	292.270	113.00	BEGIN GYRO SURVEYS
868.00	0.790	39.850	867.95	TIE ONTO GYRO SURVEYS
966.00	0.340	21.230	965.95	BEGIN BHI MWD+IFR SURVEYS
8050.00	88.558	178.362	7610.02	7" CASING POINT
12068.00	88.950	175.670	7661.74	LAST BHI MWD+IFR SURVEY
12122.00	88.950	175.670	7662.73	PROJECTION TO BIT



Actual Wellpath Report

JELTS 37N-19HZ AWP

Page 1 of 6



REFERENCE WELLPATH IDENTIFICATION

Operator	KERR-MCGEE OIL & GAS ONSHORE LP	Slot	SLOT#23 JELTS 37N-19HZ (275'FNL & 1828'FEL, SEC.19)
Area	COLORADO	Well	JELTS 37N-19HZ
Field	WELD COUNTY (KERR MCGEE)	Wellbore	JELTS 37N-19HZ AWP
Facility	SEC.19-T1N-R67W		

REPORT SETUP INFORMATION

Projection System	NAD83 / Lambert Colorado SP, Northern Zone (501), US feet	Software System	WellArchitect® 4.0.0
North Reference	True	User	Robiale01
Scale	0.999963	Report Generated	19/Jul/2013 at 10:55
Convergence at slot	n/a	Database/Source file	WA_ANADARKO/JELTS_37N-19HZ_AWP.xml

WELLPATH LOCATION

	Local coordinates		Grid coordinates		Geographic coordinates	
	North[ft]	East[ft]	Easting[US ft]	Northing[US ft]	Latitude	Longitude
Slot Location	37.83	2112.35	3159405.73	1259069.34	40°02'35.264"N	104°55'50.311"W
Facility Reference Pt			3157293.75	1259018.13	40°02'34.891"N	104°56'17.471"W
Field Reference Pt			3197771.84	1268891.29	40°04'09.600"N	104°47'36.000"W

WELLPATH DATUM

Calculation method	Minimum curvature	ENSIGN 145 (RKB) to Facility Vertical Datum	5160.00ft
Horizontal Reference Pt	Slot	ENSIGN 145 (RKB) to Mean Sea Level	5160.00ft
Vertical Reference Pt	ENSIGN 145 (RKB)	ENSIGN 145 (RKB) to Mud Line at Slot (SLOT#23 JELTS 37N-19HZ (275'FNL & 1828'FEL, SEC.19))	5160.00ft
MD Reference Pt	ENSIGN 145 (RKB)	Section Origin	N 0.00, E 0.00 ft
Field Vertical Reference	Mean Sea Level	Section Azimuth	179.03°



Actual Wellpath Report

JELTS 37N-19HZ AWP

Page 2 of 6



REFERENCE WELLPATH IDENTIFICATION

Operator	KERR-MCGEE OIL & GAS ONSHORE LP	Slot	SLOT#23 JELTS 37N-19HZ (275'FNL & 1828'FEL, SEC.19)
Area	COLORADO	Well	JELTS 37N-19HZ
Field	WELD COUNTY (KERR MCGEE)	Wellbore	JELTS 37N-19HZ AWB
Facility	SEC.19-T1N-R67W		

WELLPATH DATA (124 stations) † = interpolated/extrapolated station

MD [ft]	Inclination [°]	Azimuth [°]	TVD [ft]	Vert Sect [ft]	North [ft]	East [ft]	Latitude	Longitude	DLS [°/100ft]	Comments
0.00†	0.000	292.270	0.00	0.00	0.00	0.00	40°02'35.264"N	104°55'50.311"W	0.00	
13.00	0.000	292.270	13.00	0.00	0.00	0.00	40°02'35.264"N	104°55'50.311"W	0.00	TIE ON
113.00	0.430	292.270	113.00	-0.15	0.14	-0.35	40°02'35.265"N	104°55'50.315"W	0.43	BEGIN GYRO SURVEYS
213.00	0.410	266.640	213.00	-0.28	0.26	-1.05	40°02'35.267"N	104°55'50.325"W	0.19	
313.00	0.300	301.760	312.99	-0.41	0.38	-1.63	40°02'35.268"N	104°55'50.332"W	0.24	
413.00	0.480	5.550	412.99	-0.97	0.93	-1.81	40°02'35.273"N	104°55'50.334"W	0.44	
513.00	1.030	10.810	512.98	-2.26	2.23	-1.60	40°02'35.286"N	104°55'50.332"W	0.55	
613.00	0.750	12.660	612.97	-3.78	3.76	-1.29	40°02'35.301"N	104°55'50.328"W	0.28	
713.00	0.720	12.460	712.96	-5.02	5.01	-1.01	40°02'35.313"N	104°55'50.324"W	0.03	
813.00	0.580	351.560	812.96	-6.14	6.12	-0.95	40°02'35.325"N	104°55'50.323"W	0.27	
868.00	0.790	39.850	867.95	-6.70	6.69	-0.75	40°02'35.330"N	104°55'50.321"W	1.08	TIE ONTO GYRO SURVEYS
966.00	0.340	21.230	965.95	-7.48	7.48	-0.21	40°02'35.338"N	104°55'50.314"W	0.49	BEGIN BHI MWD+IFR SURVEYS
1065.00	0.210	307.340	1064.95	-7.87	7.86	-0.25	40°02'35.342"N	104°55'50.314"W	0.35	
1157.00	1.500	38.820	1156.94	-8.90	8.90	0.37	40°02'35.352"N	104°55'50.306"W	1.65	
1248.00	3.070	54.330	1247.86	-11.20	11.25	3.10	40°02'35.375"N	104°55'50.271"W	1.84	
1340.00	4.000	42.810	1339.69	-14.92	15.04	7.28	40°02'35.413"N	104°55'50.217"W	1.27	
1431.00	5.040	46.530	1430.40	-19.91	20.12	12.34	40°02'35.463"N	104°55'50.152"W	1.19	
1523.00	7.130	48.030	1521.88	-26.39	26.72	19.52	40°02'35.528"N	104°55'50.060"W	2.28	
1615.00	9.460	48.150	1612.91	-35.08	35.58	29.39	40°02'35.616"N	104°55'49.933"W	2.53	
1706.00	11.190	46.920	1702.43	-45.90	46.61	41.42	40°02'35.725"N	104°55'49.778"W	1.92	
1798.00	10.900	44.050	1792.73	-58.03	58.95	53.98	40°02'35.847"N	104°55'49.617"W	0.68	
1890.00	11.040	41.490	1883.05	-70.68	71.80	65.87	40°02'35.974"N	104°55'49.464"W	0.55	
1984.00	10.900	45.450	1975.33	-83.44	84.78	78.16	40°02'36.102"N	104°55'49.306"W	0.82	
2079.00	10.350	47.820	2068.71	-95.26	96.81	90.89	40°02'36.221"N	104°55'49.142"W	0.74	
2173.00	10.270	45.300	2161.19	-106.61	108.38	103.10	40°02'36.335"N	104°55'48.985"W	0.49	
2268.00	10.710	49.340	2254.60	-118.11	120.09	115.82	40°02'36.451"N	104°55'48.822"W	0.90	
2363.00	10.250	47.490	2348.02	-129.35	131.55	128.75	40°02'36.564"N	104°55'48.656"W	0.60	
2458.00	9.960	54.450	2441.55	-139.62	142.04	141.66	40°02'36.668"N	104°55'48.490"W	1.32	
2553.00	9.740	51.920	2535.15	-149.13	151.77	154.67	40°02'36.764"N	104°55'48.322"W	0.51	
2648.00	10.730	50.100	2628.63	-159.53	162.40	167.78	40°02'36.869"N	104°55'48.154"W	1.10	
2743.00	10.040	48.490	2722.08	-170.47	173.56	180.77	40°02'36.979"N	104°55'47.987"W	0.79	
2838.00	9.240	45.220	2815.74	-181.13	184.42	192.38	40°02'37.086"N	104°55'47.837"W	1.02	
2932.00	8.850	51.070	2908.57	-190.81	194.28	203.36	40°02'37.184"N	104°55'47.696"W	1.06	
3027.00	8.140	47.820	3002.53	-199.73	203.39	214.03	40°02'37.274"N	104°55'47.559"W	0.90	
3122.00	7.850	47.210	3096.60	-208.49	212.31	223.78	40°02'37.362"N	104°55'47.434"W	0.32	
3217.00	6.480	44.090	3190.86	-216.60	220.57	232.27	40°02'37.444"N	104°55'47.325"W	1.50	
3312.00	4.660	43.770	3285.41	-223.13	227.21	238.67	40°02'37.509"N	104°55'47.242"W	1.92	
3407.00	3.500	32.990	3380.17	-228.28	232.43	242.92	40°02'37.561"N	104°55'47.188"W	1.46	
3499.00	1.330	58.610	3472.08	-231.15	235.34	245.36	40°02'37.590"N	104°55'47.156"W	2.58	
3594.00	3.280	108.360	3567.01	-230.81	235.06	248.88	40°02'37.587"N	104°55'47.111"W	2.76	
3688.00	1.540	136.050	3660.92	-228.99	233.30	252.31	40°02'37.570"N	104°55'47.067"W	2.18	
3783.00	1.260	109.140	3755.90	-227.70	232.04	254.18	40°02'37.557"N	104°55'47.043"W	0.74	
3878.00	2.190	182.210	3850.86	-225.53	229.88	255.10	40°02'37.536"N	104°55'47.031"W	2.30	
3973.00	1.890	193.660	3945.80	-222.20	226.55	254.66	40°02'37.503"N	104°55'47.037"W	0.53	
4068.00	1.290	196.040	4040.76	-219.66	224.00	253.99	40°02'37.478"N	104°55'47.045"W	0.64	



Actual Wellpath Report

JELTS 37N-19HZ AWP

Page 3 of 6



REFERENCE WELLPATH IDENTIFICATION

Operator	KERR-MCGEE OIL & GAS ONSHORE LP	Slot	SLOT#23 JELTS 37N-19HZ (275'FNL & 1828'FEL, SEC.19)
Area	COLORADO	Well	JELTS 37N-19HZ
Field	WELD COUNTY (KERR MCGEE)	Wellbore	JELTS 37N-19HZ AWB
Facility	SEC.19-T1N-R67W		

WELLPATH DATA (124 stations) † = interpolated/extrapolated station

MD [ft]	Inclination [°]	Azimuth [°]	TVD [ft]	Vert Sect [ft]	North [ft]	East [ft]	Latitude	Longitude	DLS [°/100ft]	Comments
4163.00	1.220	218.550	4135.74	-217.86	222.18	253.07	40°02'37.460"N	104°55'47.057"W	0.52	
4447.00	0.940	271.340	4419.70	-215.62	219.87	248.85	40°02'37.437"N	104°55'47.111"W	0.35	
4637.00	1.020	308.520	4609.67	-216.76	220.96	245.97	40°02'37.448"N	104°55'47.148"W	0.33	
5016.00	1.280	64.260	4988.63	-220.68	224.90	247.15	40°02'37.486"N	104°55'47.133"W	0.52	
5396.00	1.010	107.470	5368.56	-221.40	225.74	254.16	40°02'37.495"N	104°55'47.043"W	0.23	
5680.00	0.570	61.750	5652.54	-221.25	225.65	257.80	40°02'37.494"N	104°55'46.996"W	0.26	
5965.00	0.980	17.340	5937.51	-224.21	228.65	259.77	40°02'37.524"N	104°55'46.971"W	0.24	
6249.00	0.650	314.480	6221.49	-227.67	232.10	259.35	40°02'37.558"N	104°55'46.976"W	0.32	
6534.00	0.580	324.810	6506.47	-230.01	234.41	257.36	40°02'37.580"N	104°55'47.002"W	0.05	
6819.00	1.600	205.210	6791.44	-227.64	231.99	254.84	40°02'37.557"N	104°55'47.034"W	0.69	
6979.00	1.330	214.370	6951.38	-224.12	228.43	252.84	40°02'37.521"N	104°55'47.060"W	0.22	
7008.00	1.310	206.190	6980.38	-223.55	227.86	252.50	40°02'37.516"N	104°55'47.064"W	0.65	
7056.00	3.390	191.000	7028.33	-221.67	225.97	251.99	40°02'37.497"N	104°55'47.071"W	4.49	
7102.00	7.850	182.740	7074.10	-217.20	221.50	251.58	40°02'37.453"N	104°55'47.076"W	9.83	
7149.00	11.540	180.390	7120.42	-209.30	213.59	251.39	40°02'37.375"N	104°55'47.079"W	7.89	
7197.00	15.680	176.780	7167.06	-198.01	202.31	251.72	40°02'37.263"N	104°55'47.074"W	8.80	
7244.00	20.520	175.340	7211.73	-183.43	187.74	252.75	40°02'37.119"N	104°55'47.061"W	10.34	
7292.00	26.700	177.020	7255.69	-164.24	168.57	253.99	40°02'36.930"N	104°55'47.045"W	12.95	
7339.00	32.380	181.510	7296.57	-141.10	145.42	254.21	40°02'36.701"N	104°55'47.042"W	12.96	
7386.00	35.710	183.590	7335.51	-114.84	119.15	253.02	40°02'36.441"N	104°55'47.058"W	7.50	
7433.00	39.230	183.580	7372.80	-86.34	90.61	251.23	40°02'36.159"N	104°55'47.081"W	7.49	
7481.00	43.590	182.950	7408.79	-54.69	58.92	249.43	40°02'35.846"N	104°55'47.104"W	9.12	
7528.00	47.900	181.800	7441.59	-21.09	25.30	248.05	40°02'35.514"N	104°55'47.122"W	9.34	
7576.00	53.920	180.150	7471.84	16.12	-11.93	247.44	40°02'35.146"N	104°55'47.129"W	12.82	
7623.00	59.210	178.540	7497.73	55.33	-51.14	247.91	40°02'34.759"N	104°55'47.124"W	11.61	
7671.00	65.020	175.900	7520.17	97.71	-93.49	249.99	40°02'34.340"N	104°55'47.097"W	13.04	
7718.00	67.410	177.410	7539.13	140.68	-136.42	252.49	40°02'33.916"N	104°55'47.065"W	5.87	
7766.00	69.750	178.020	7556.65	185.35	-181.06	254.27	40°02'33.475"N	104°55'47.042"W	5.02	
7813.00	71.610	178.500	7572.20	229.69	-225.39	255.62	40°02'33.037"N	104°55'47.024"W	4.07	
7860.00	74.830	178.780	7585.77	274.69	-270.37	256.68	40°02'32.592"N	104°55'47.011"W	6.87	
7907.00	80.020	178.180	7596.00	320.54	-316.22	257.90	40°02'32.139"N	104°55'46.995"W	11.11	
7955.00	83.670	177.730	7602.81	368.04	-363.69	259.60	40°02'31.670"N	104°55'46.973"W	7.66	
8002.00	85.150	177.850	7607.39	414.80	-410.43	261.40	40°02'31.208"N	104°55'46.950"W	3.16	
8050.00†	88.558	178.362	7610.02	462.72	-458.33	262.99	40°02'30.735"N	104°55'46.930"W	7.18	7" CASING POINT
8062.00	89.410	178.490	7610.23	474.71	-470.32	263.32	40°02'30.616"N	104°55'46.925"W	7.18	
8156.00	90.310	179.070	7610.46	568.71	-564.30	265.32	40°02'29.687"N	104°55'46.900"W	1.14	
8251.00	90.360	178.790	7609.91	663.71	-659.28	267.09	40°02'28.749"N	104°55'46.877"W	0.30	
8346.00	89.190	179.440	7610.28	758.71	-754.26	268.56	40°02'27.810"N	104°55'46.858"W	1.41	
8441.00	89.130	179.430	7611.67	853.69	-849.25	269.50	40°02'26.871"N	104°55'46.846"W	0.06	
8536.00	88.930	179.630	7613.28	948.68	-944.23	270.27	40°02'25.933"N	104°55'46.836"W	0.30	
8631.00	88.730	179.520	7615.22	1043.65	-1039.21	270.98	40°02'24.994"N	104°55'46.827"W	0.24	
8726.00	88.120	177.830	7617.83	1138.61	-1134.14	273.17	40°02'24.056"N	104°55'46.799"W	1.89	
8820.00	87.250	179.400	7621.63	1232.53	-1228.04	275.45	40°02'23.128"N	104°55'46.770"W	1.91	
8915.00	87.440	180.280	7626.03	1327.42	-1322.93	275.71	40°02'22.190"N	104°55'46.766"W	0.95	
9010.00	88.640	180.390	7629.28	1422.33	-1417.87	275.16	40°02'21.252"N	104°55'46.773"W	1.27	



Actual Wellpath Report

JELTS 37N-19HZ AWP

Page 4 of 6



REFERENCE WELLPATH IDENTIFICATION

Operator	KERR-MCGEE OIL & GAS ONSHORE LP	Slot	SLOT#23 JELTS 37N-19HZ (275'FNL & 1828'FEL, SEC.19)
Area	COLORADO	Well	JELTS 37N-19HZ
Field	WELD COUNTY (KERR MCGEE)	Wellbore	JELTS 37N-19HZ AWB
Facility	SEC.19-T1N-R67W		

WELLPATH DATA (124 stations)

MD [ft]	Inclination [°]	Azimuth [°]	TVD [ft]	Vert Sect [ft]	North [ft]	East [ft]	Latitude	Longitude	DLS [°/100ft]	Comments
9105.00	89.780	179.950	7630.59	1517.30	-1512.86	274.87	40°02'20.313"N	104°55'46.777"W	1.29	
9200.00	89.960	179.830	7630.80	1612.29	-1607.86	275.06	40°02'19.375"N	104°55'46.775"W	0.23	
9295.00	90.400	180.040	7630.51	1707.28	-1702.86	275.16	40°02'18.436"N	104°55'46.773"W	0.51	
9390.00	89.320	180.840	7630.74	1802.25	-1797.86	274.43	40°02'17.497"N	104°55'46.783"W	1.41	
9485.00	89.250	181.070	7631.92	1897.19	-1892.84	272.85	40°02'16.559"N	104°55'46.803"W	0.25	
9579.00	88.980	179.920	7633.38	1991.14	-1986.82	272.04	40°02'15.630"N	104°55'46.813"W	1.26	
9674.00	89.130	179.850	7634.94	2086.12	-2081.81	272.23	40°02'14.691"N	104°55'46.811"W	0.17	
9769.00	89.500	180.810	7636.08	2181.09	-2176.80	271.68	40°02'13.752"N	104°55'46.818"W	1.08	
9864.00	89.320	179.320	7637.06	2276.06	-2271.79	271.57	40°02'12.814"N	104°55'46.819"W	1.58	
9959.00	88.790	179.470	7638.62	2371.05	-2366.77	272.58	40°02'11.875"N	104°55'46.807"W	0.58	
10054.00	89.320	178.460	7640.19	2466.03	-2461.74	274.29	40°02'10.936"N	104°55'46.785"W	1.20	
10148.00	90.060	178.100	7640.70	2560.02	-2555.70	277.11	40°02'10.008"N	104°55'46.748"W	0.88	
10243.00	89.750	178.070	7640.86	2655.01	-2650.64	280.29	40°02'09.070"N	104°55'46.708"W	0.33	
10338.00	89.590	178.190	7641.40	2750.00	-2745.59	283.39	40°02'08.131"N	104°55'46.668"W	0.21	
10433.00	89.470	178.170	7642.18	2844.98	-2840.54	286.41	40°02'07.193"N	104°55'46.629"W	0.13	
10528.00	89.060	177.870	7643.40	2939.96	-2935.47	289.69	40°02'06.255"N	104°55'46.587"W	0.53	
10623.00	88.240	178.600	7645.64	3034.92	-3030.40	292.61	40°02'05.317"N	104°55'46.549"W	1.16	
10717.00	88.840	179.530	7648.03	3128.89	-3124.36	294.15	40°02'04.388"N	104°55'46.529"W	1.18	
10812.00	88.940	178.810	7649.87	3223.87	-3219.33	295.52	40°02'03.450"N	104°55'46.512"W	0.77	
10907.00	89.190	179.560	7651.42	3318.86	-3314.31	296.87	40°02'02.511"N	104°55'46.494"W	0.83	
11002.00	88.980	179.910	7652.94	3413.84	-3409.29	297.31	40°02'01.572"N	104°55'46.489"W	0.43	
11097.00	89.720	178.670	7654.02	3508.83	-3504.28	298.49	40°02'00.634"N	104°55'46.474"W	1.52	
11192.00	90.150	179.380	7654.13	3603.83	-3599.26	300.11	40°01'59.695"N	104°55'46.453"W	0.87	
11287.00	90.090	179.710	7653.93	3698.83	-3694.26	300.86	40°01'58.756"N	104°55'46.443"W	0.35	
11381.00	89.590	179.700	7654.19	3792.82	-3788.26	301.35	40°01'57.827"N	104°55'46.437"W	0.53	
11476.00	89.620	180.190	7654.85	3887.80	-3883.25	301.44	40°01'56.889"N	104°55'46.436"W	0.52	
11571.00	89.500	178.170	7655.58	3982.80	-3978.24	302.80	40°01'55.950"N	104°55'46.418"W	2.13	
11666.00	89.260	178.460	7656.60	4077.78	-4073.19	305.59	40°01'55.012"N	104°55'46.382"W	0.40	
11761.00	88.940	177.620	7658.10	4172.76	-4168.12	308.84	40°01'54.074"N	104°55'46.341"W	0.95	
11855.00	89.560	176.730	7659.33	4266.70	-4262.00	313.47	40°01'53.146"N	104°55'46.281"W	1.15	
11950.00	89.470	175.970	7660.13	4361.59	-4356.80	319.52	40°01'52.209"N	104°55'46.203"W	0.81	
12045.00	89.070	175.620	7661.34	4456.43	-4451.54	326.48	40°01'51.273"N	104°55'46.114"W	0.56	
12068.00	88.950	175.670	7661.74	4479.39	-4474.47	328.23	40°01'51.046"N	104°55'46.091"W	0.57	LAST BHI MWD+IFR SURVEY
12122.00	88.950	175.670	7662.73	4533.28	-4528.30	332.31	40°01'50.514"N	104°55'46.039"W	0.00	PROJECTION TO BIT



Actual Wellpath Report

JELTS 37N-19HZ AWP

Page 5 of 6



REFERENCE WELLPATH IDENTIFICATION

Operator	KERR-MCGEE OIL & GAS ONSHORE LP	Slot	SLOT#23 JELTS 37N-19HZ (275'FNL & 1828'FEL, SEC.19)
Area	COLORADO	Well	JELTS 37N-19HZ
Field	WELD COUNTY (KERR MCGEE)	Wellbore	JELTS 37N-19HZ AWB
Facility	SEC.19-T1N-R67W		

HOLE & CASING SECTIONS - Ref Wellbore: JELTS 37N-19HZ AWB Ref Wellpath: JELTS 37N-19HZ AWP

String/Diameter	Start MD [ft]	End MD [ft]	Interval [ft]	Start TVD [ft]	End TVD [ft]	Start N/S [ft]	Start E/W [ft]	End N/S [ft]	End E/W [ft]
13.5in Open Hole	13.00	955.00	942.00	13.00	954.95	0.00	0.00	7.41	-0.24
9.625in Casing Surface	13.00	955.00	942.00	13.00	954.95	0.00	0.00	7.41	-0.24
8.75in Open Hole	955.00	8060.00	7105.00	954.95	7610.21	7.41	-0.24	-468.32	263.26
7in Casing Intermediate	13.00	8050.00	8037.00	13.00	7610.02	0.00	0.00	-458.33	262.99
6.125in Open Hole	8060.00	12122.00	4062.00	7610.21	7662.73	-468.32	263.26	-4528.30	332.31

TARGETS

Name	MD [ft]	TVD [ft]	North [ft]	East [ft]	Grid East [US ft]	Grid North [US ft]	Latitude	Longitude	Shape
SECTION 19 LINES		27.00	-37.76	-2112.27	3157293.83	1259018.03	40°02'34.890"N	104°56'17.470"W	polygon
JELTS 37N-19HZ BHL ON PLAT REV-1 (460'FSL & 1590'FEL, SEC.19)		7655.00	-4553.61	320.10	3159755.05	1254518.05	40°01'50.264"N	104°55'46.196"W	point
JELTS 37N-19HZ LAND BOX		7655.00	0.00	0.00	3159405.73	1259069.34	40°02'35.264"N	104°55'50.311"W	polygon
SEC. 19 HARDLINES (460' SETBACKS)		8027.00	-37.76	-2112.27	3157293.83	1259018.03	40°02'34.890"N	104°56'17.470"W	polygon

WELLPATH COMPOSITION - Ref Wellbore: JELTS 37N-19HZ AWB Ref Wellpath: JELTS 37N-19HZ AWP

Start MD [ft]	End MD [ft]	Positional Uncertainty Model	Log Name/Comment	Wellbore
13.00	868.00	Generic gyro - continuous (Standard)	MS ENERGY SERVICES GYRO SURVEYS <113-868>	JELTS 37N-19HZ AWB
868.00	8002.00	NaviTrak (MAGCORR,IFR)	BHI NAVITRAK MWD+IFR 8.75" HOLE <966-8002>	JELTS 37N-19HZ AWB
8002.00	12068.00	NaviTrak (MAGCORR,IFR)	BHI NAVITRAK MWD+IFR 6 1/8" HOLE <8062-12068>	JELTS 37N-19HZ AWB
12068.00	12122.00	Blind Drilling (std)	Projection to bit	JELTS 37N-19HZ AWB



Actual Wellpath Report

JELTS 37N-19HZ AWP

Page 6 of 6



REFERENCE WELLPATH IDENTIFICATION

Operator	KERR-MCGEE OIL & GAS ONSHORE LP	Slot	SLOT#23 JELTS 37N-19HZ (275'FNL & 1828'FEL, SEC.19)
Area	COLORADO	Well	JELTS 37N-19HZ
Field	WELD COUNTY (KERR MCGEE)	Wellbore	JELTS 37N-19HZ AWP
Facility	SEC.19-T1N-R67W		

WELLPATH COMMENTS

MD [ft]	Inclination [°]	Azimuth [°]	TVD [ft]	Comment
13.00	0.000	292.270	13.00	TIE ON
113.00	0.430	292.270	113.00	BEGIN GYRO SURVEYS
868.00	0.790	39.850	867.95	TIE ONTO GYRO SURVEYS
966.00	0.340	21.230	965.95	BEGIN BHI MWD+IFR SURVEYS
8050.00	88.558	178.362	7610.02	7" CASING POINT
12068.00	88.950	175.670	7661.74	LAST BHI MWD+IFR SURVEY
12122.00	88.950	175.670	7662.73	PROJECTION TO BIT