



Kerr-McGee Oil & Gas Onshore LP

A subsidiary of Anadarko Petroleum Corporation

1099 18th Street
Denver, CO 80202
720-929-6000

October 8, 2013

Department of Natural Resources
Oil and Gas Conservation Commission
The Chancery Building
1120 Lincoln St., Suite 801
Denver, CO 80203

Re: **30 Day Certification Letter - 318A-e**
PARAGON 9N-31HZ
Township 1 North, Range 65 West, Section 6: SE/4SE/4
Unit Spacing: 01N-65W-6 E/2E/2
02N-65W-31 E/2SE/4
Weld County, Colorado

Ladies/Gentlemen:

Kerr-McGee Oil and Gas Onshore LP ("KMG") hereby certifies to the Director that a thirty (30) day notice has been given by certified mail to all owners in the proposed wellbore spacing unit. We have not received any objections to such well location, proposed spacing unit, or additional producing formation. KMG hereby requests the Director to approve the boundary well.

If you have any questions or issues regarding this permit, please contact Cheryl Light at (720) 929-6461.

Very truly yours,

Kerr-McGee Oil and Gas Onshore LP

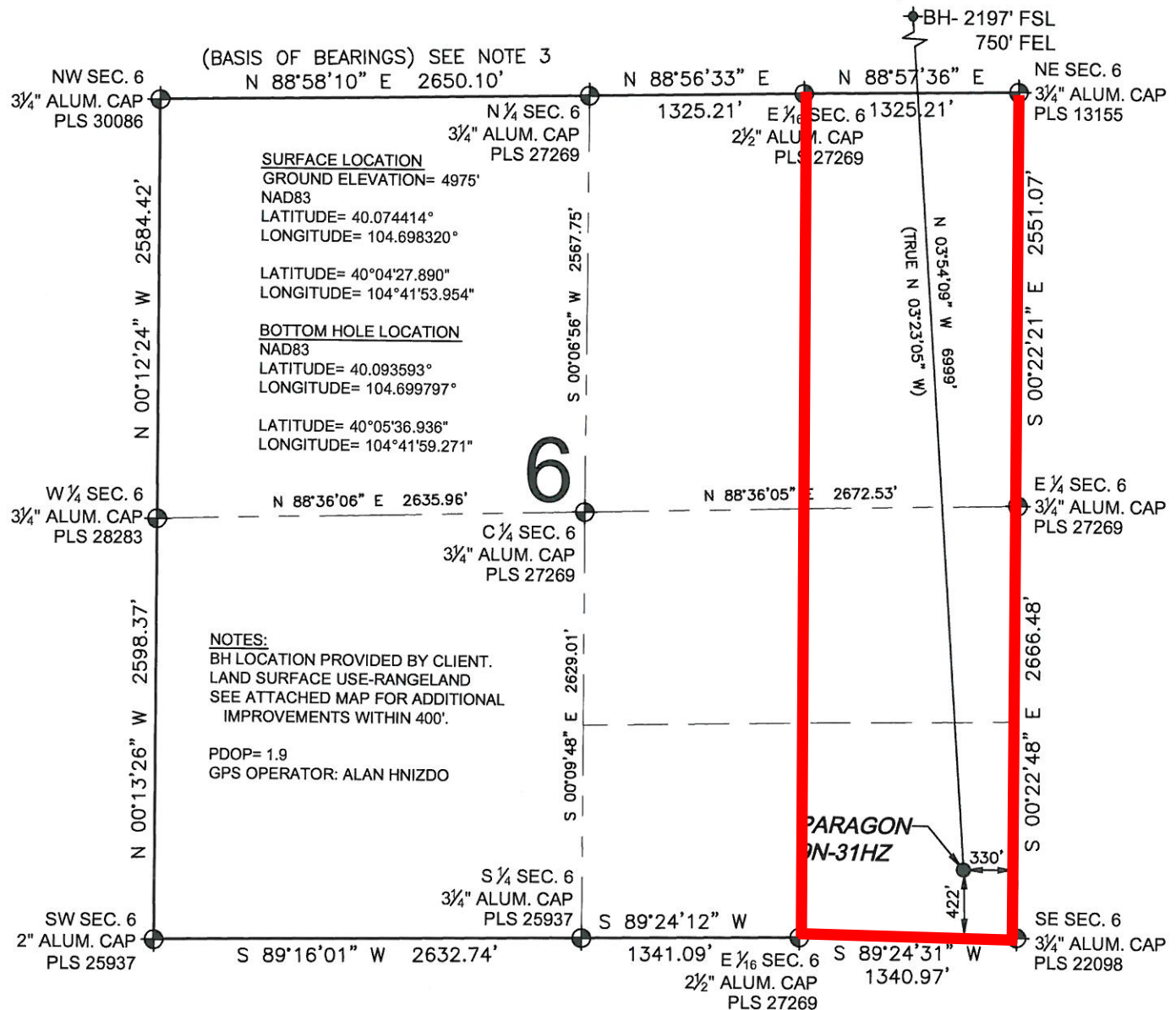
A handwritten signature in black ink that reads 'RPowers'.

Ronett Powers
Regulatory Analyst II

Enclosure

WELL LOCATION CERTIFICATE: PARAGON 9N-31HZ

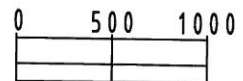
SECTION 6, TOWNSHIP 1 NORTH, RANGE 65 WEST, 6TH P.M.

**LEGEND**

- ⊕ = EXISTING MONUMENT ⊕ = BOTTOM HOLE
● = PROPOSED WELL ◆ = EXISTING WELL
BH = BOTTOM HOLE

NOTES:

- THIS FIELD SURVEY CONFORMS TO THE MINIMUM STANDARDS SET BY THE C.O.G.C.C., RULE NO. 215
- HORIZONTAL POSITIONS AND ORTHOMETRIC ELEVATIONS SHOWN AT THE WELL HEAD, ARE BASED ON GPS-RTK POSITIONS DERIVED FROM MINIMUM 2-HOUR STATIC OBSERVATIONS CORRECTED BY THE NATIONAL GEODETIC SURVEY ONLINE POSITIONING USER SERVICE, O.P.U.S. DATUM: HORIZONTAL = NAD83/2011, VERTICAL = NAVD88
- THE BASIS OF BEARINGS ARE STATE PLANE COORDINATE SYSTEM GRID BEARINGS SHOWN HEREON BETWEEN THE DESCRIBED MONUMENTS SHOWN HEREON.
- GRID DISTANCES ARE SHOWN, AS MEASURED IN THE FIELD, WITH TIES TO WELLS MEASURED PERPENDICULAR TO SECTION LINES.

WELL PARAGON 9N-31HZ TO BE LOCATED 422' FSL AND 330' FEL

SCALE: 1"=1000'

I, BRADLEY L. LAMAN, A LICENSED PROFESSIONAL LAND SURVEYOR IN THE STATE OF COLORADO DO HEREBY CERTIFY TO **KERR-MCGEE OIL & GAS ONSHORE LP**, THAT THE SURVEY AND WELL LOCATION CERTIFICATE SHOWN HEREON WERE DONE BY ME OR UNDER MY DIRECT SUPERVISION AND THAT THE DRAWING SHOWN HEREON ACCURATELY DEPICTS THE PROPOSED LOCATION OF THE WELL. THIS CERTIFICATE DOES NOT REPRESENT A LAND SURVEY PLAT OR IMPROVEMENT SURVEY PLAT AS DEFINED BY C.R.S. 38-51-102 AND CANNOT BE RELIED UPON TO DETERMINE OWNERSHIP.

BRADLEY L. LAMAN, PLS 38345
COLORADO LICENSED PROFESSIONAL LAND SURVEYOR
FOR AND ON BEHALF OF P.F.S., LLC



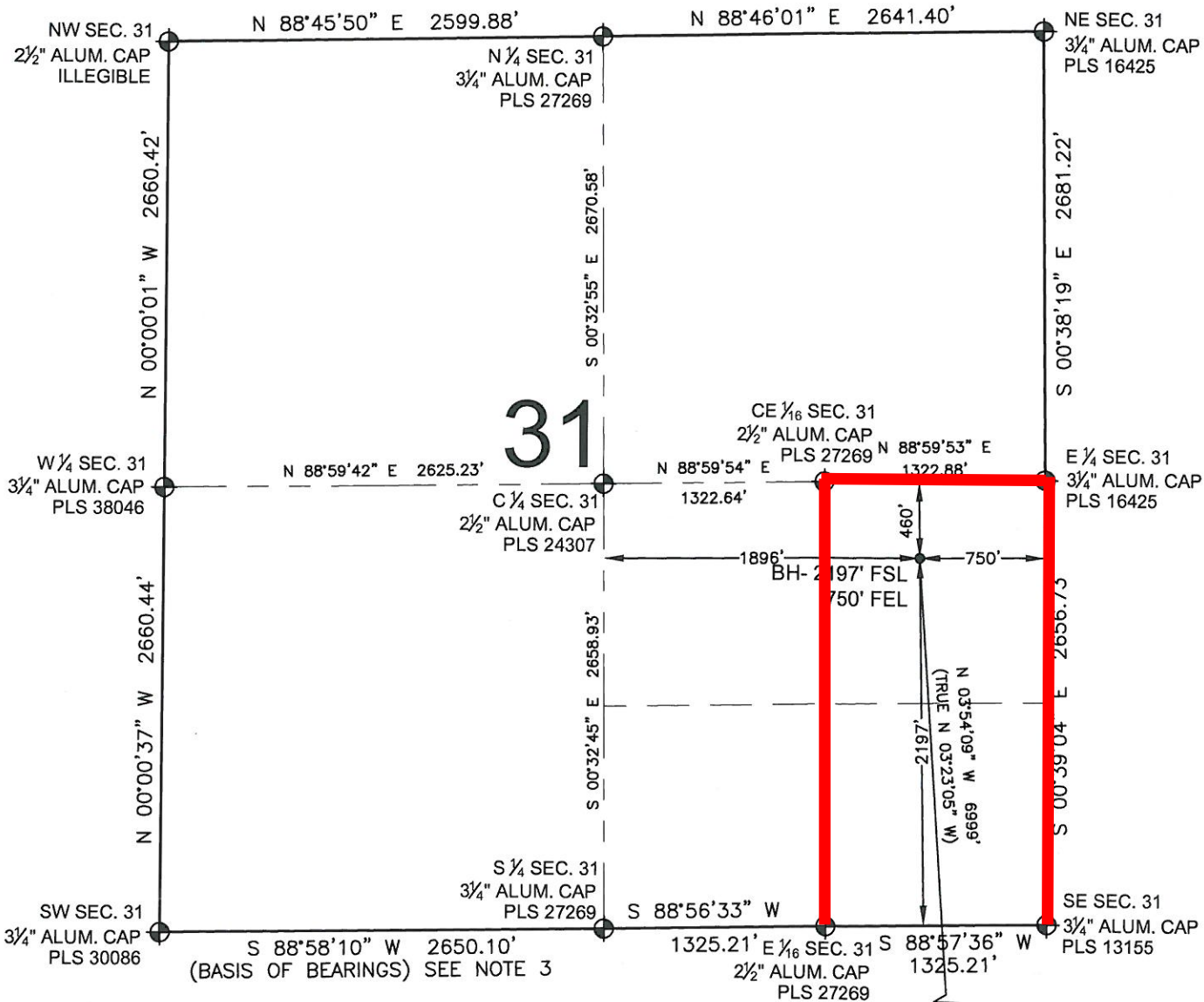
SHEET 1 OF 2

PREPARED BY: PFS Petroleum Field Services, LLC 1801 W. 13th Ave. Denver, CO 80204	FIELD DATE: 09-27-12 DRAWING DATE: 08-02-13 BY: CLM CHECKED: TJN	SURFACE LOCATION: SE 1/4 SE 1/4, SEC. 6, T1N, R65W, 6TH P.M. WELD COUNTY, COLORADO
--	---	---

NOTICE: ACCORDING TO COLORADO LAW YOU MUST COMMENCE ANY LEGAL ACTION BASED UPON ANY DEFECT IN THIS SURVEY WITHIN THREE YEARS AFTER YOU FIRST DISCOVER SUCH DEFECT. IN NO EVENT MAY ANY ACTION BASED UPON ANY DEFECT IN THIS SURVEY BE COMMENCED MORE THAN TEN YEARS FROM THIS SAID DATE OF THIS CERTIFICATION SHOWN HEREON.

WELL LOCATION CERTIFICATE: PARAGON 9N-31HZ

SECTION 31, TOWNSHIP 2 NORTH, RANGE 65 WEST, 6TH P.M.

**LEGEND**

- ⊕ = EXISTING MONUMENT ⊕ = BOTTOM HOLE
 ● = PROPOSED WELL ◆ = EXISTING WELL
 BH = BOTTOM HOLE

NOTES:

- THIS FIELD SURVEY CONFORMS TO THE MINIMUM STANDARDS SET BY THE C.O.G.C.C., RULE NO. 215
- HORIZONTAL POSITIONS AND ORTHOMETRIC ELEVATIONS SHOWN AT THE WELL HEAD, ARE BASED ON GPS-RTK POSITIONS DERIVED FROM MINIMUM 2-HOUR STATIC OBSERVATIONS CORRECTED BY THE NATIONAL GEODETIC SURVEY ONLINE POSITIONING USER SERVICE, O.P.U.S. DATUM: HORIZONTAL = NAD83/2011, VERTICAL = NAVD88
- THE BASIS OF BEARINGS ARE STATE PLANE COORDINATE SYSTEM GRID BEARINGS SHOWN HEREON BETWEEN THE DESCRIBED MONUMENTS SHOWN HEREON.
- GRID DISTANCES ARE SHOWN, AS MEASURED IN THE FIELD, WITH TIES TO WELLS MEASURED PERPENDICULAR TO SECTION LINES.

SHEET 2 OF 2

PREPARED BY:



FIELD DATE:

09-27-12

DRAWING DATE:

08-02-13

BY:

CLM

CHECKED:

TJN

SURFACE LOCATION:

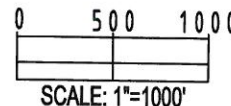
SE 1/4 SE 1/4,

SEC. 6, T1N, R65W, 6TH P.M.

WELD COUNTY, COLORADO



BRADLEY L. LAMAN, PLS 38345

COLORADO LICENSED PROFESSIONAL LAND SURVEYOR
FOR AND ON BEHALF OF P.F.S., LLC

NOTICE: ACCORDING TO COLORADO LAW YOU MUST COMMENCE ANY LEGAL ACTION BASED UPON ANY DEFECT IN THIS SURVEY WITHIN THREE YEARS AFTER YOU FIRST DISCOVER SUCH DEFECT. IN NO EVENT MAY ANY ACTION BASED UPON ANY DEFECT IN THIS SURVEY BE COMMENCED MORE THAN TEN YEARS FROM THIS SAID DATE OF THIS CERTIFICATION SHOWN HEREON.