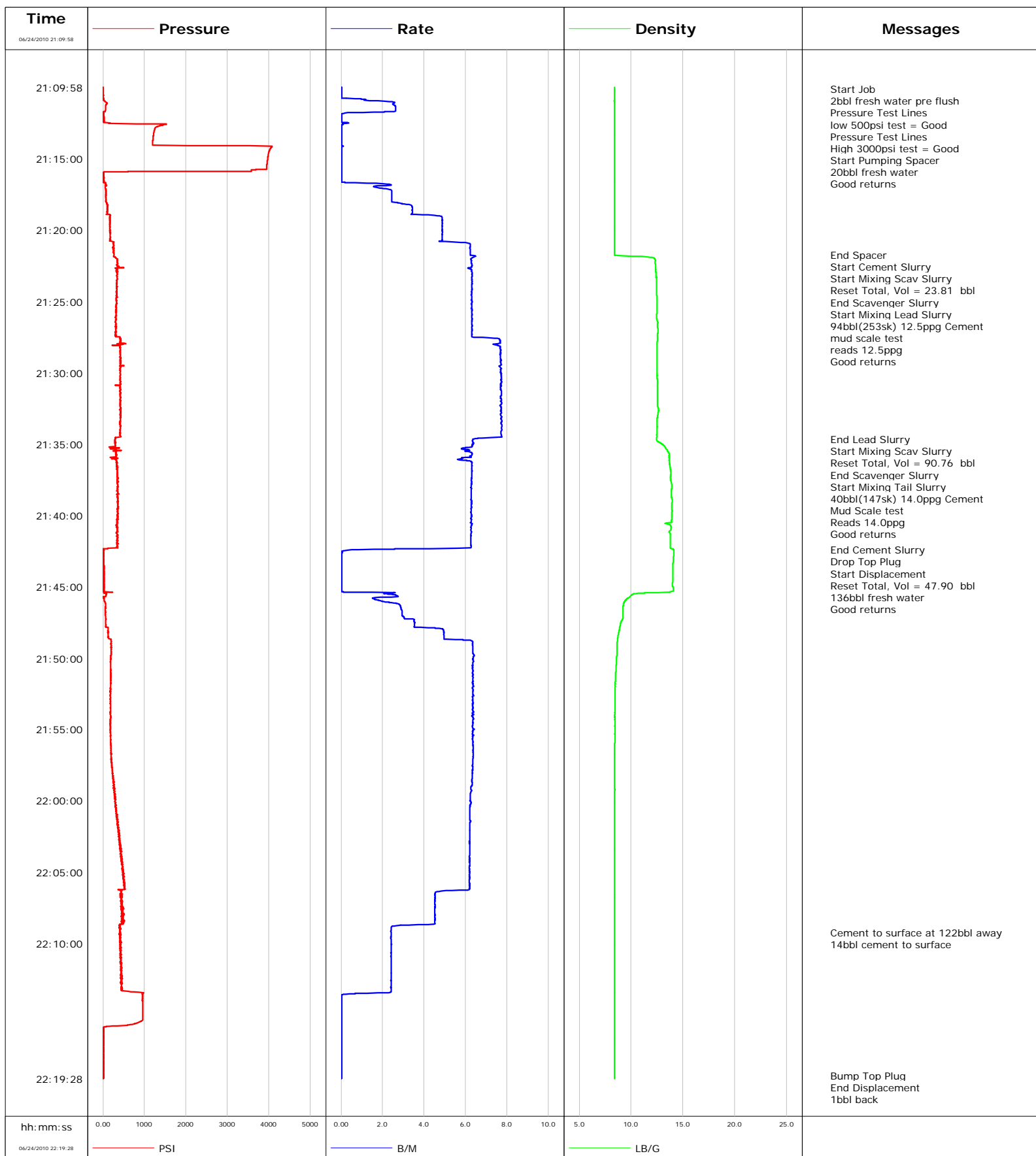


Well EF02C-28
Field North Parachute
Engineer Dustin C Krueger
Country United States

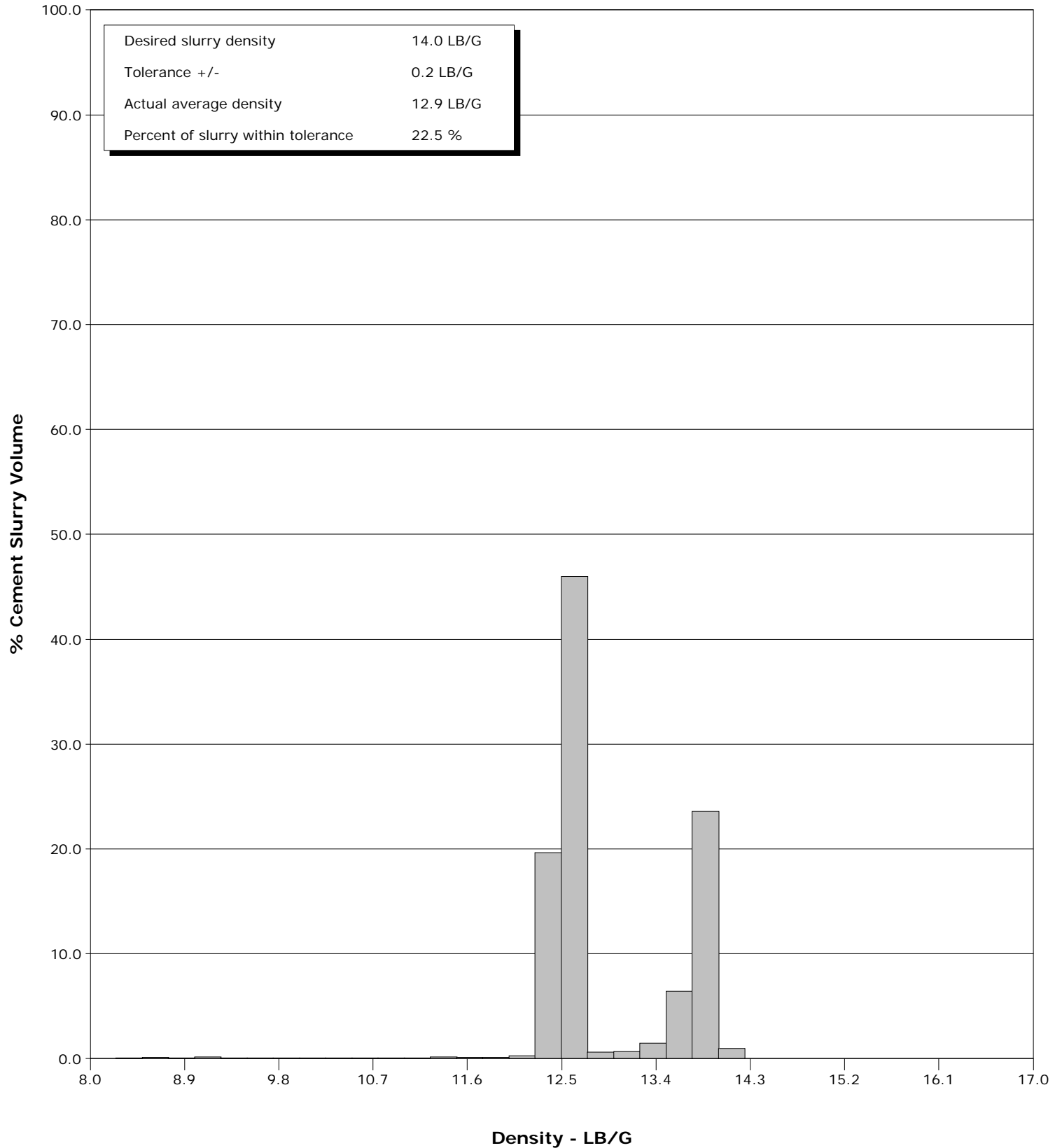
Client Encana Oil Gas
SIR No. 000378372
Job Type 1802ft 9 5/8 Surface
Job Date 06-24-2010



Well EF02C-28
Field North Parachute
Engineer Dustin C Krueger
Country United States

Client Encana Oil Gas
SIR No. 000378372
Job Type 1802ft 9 5/8 Surface
Job Date 06-24-2010

Cement Slurry - 06/24/2010 21:21:45 to 06/24/2010 21:42:24



Well EF02C-28 EF02C-28			Field North Parachute	Job Start Jun/24/2010	Customer Encana Oil & Gas	Job Number 000378372
Date	Time 24-hr clock	Treating Pressure PSI	Flow Rate B/M	Density LB/G	Volume BBL	Message
06/24/2010	21:15:16	3957	0.0	8.39	2.3	
06/24/2010	21:20:16	168	4.9	8.39	14.8	
06/24/2010	21:21:44					End Spacer
06/24/2010	21:21:44	269	6.2	8.40	23.2	
06/24/2010	21:21:45					Start Cement Slurry
06/24/2010	21:21:45	268	6.2	8.40	23.3	
06/24/2010	21:21:46					Start Mixing Scav Slurry
06/24/2010	21:21:46	268	6.3	8.57	23.4	
06/24/2010	21:21:50					Reset Total, Vol = 23.81 bbl
06/24/2010	21:21:50	250	6.5	10.99	23.8	
06/24/2010	21:22:39					End Scavenger Slurry
06/24/2010	21:22:39	287	6.1	12.36	28.9	
06/24/2010	21:22:41					Start Mixing Lead Slurry
06/24/2010	21:22:41	346	6.2	12.37	29.1	
06/24/2010	21:22:54					94bbl(253sk) 12.5ppg Cement
06/24/2010	21:22:54	350	6.3	12.38	30.5	
06/24/2010	21:22:55					mud scale test
06/24/2010	21:22:55					reads 12.5ppg
06/24/2010	21:22:55	360	6.3	12.38	30.6	
06/24/2010	21:22:56					Good returns
06/24/2010	21:22:56	333	6.3	12.38	30.7	
06/24/2010	21:25:16	318	6.3	12.51	45.4	
06/24/2010	21:30:16	411	7.7	12.52	80.7	
06/24/2010	21:34:38					End Lead Slurry
06/24/2010	21:34:38	299	6.4	12.46	114.3	
06/24/2010	21:34:39					Start Mixing Scav Slurry
06/24/2010	21:34:39	286	6.4	12.46	114.4	
06/24/2010	21:34:41					Reset Total, Vol = 90.76 bbl
06/24/2010	21:34:41	296	6.3	12.47	114.6	
06/24/2010	21:35:16	397	5.9	13.32	118.3	
06/24/2010	21:36:52					End Scavenger Slurry
06/24/2010	21:36:52	337	6.3	13.81	128.1	
06/24/2010	21:36:53					Start Mixing Tail Slurry
06/24/2010	21:36:53	337	6.3	13.81	128.2	
06/24/2010	21:36:56					40bbl(147sk) 14.0ppg Cement
06/24/2010	21:36:56					Mud Scale test
06/24/2010	21:36:56	347	6.3	13.81	128.5	
06/24/2010	21:36:57					Reads 14.0ppg
06/24/2010	21:36:57	347	6.3	13.81	128.6	
06/24/2010	21:36:58					Good returns
06/24/2010	21:36:58	352	6.3	13.81	128.8	
06/24/2010	21:40:16	375	6.3	13.92	149.5	
06/24/2010	21:42:24					End Cement Slurry
06/24/2010	21:42:24	12	0.5	14.12	162.4	
06/24/2010	21:42:30					Drop Top Plug
06/24/2010	21:42:30	11	0.1	14.13	162.5	
06/24/2010	21:42:31					Start Displacement
06/24/2010	21:42:31	11	0.0	14.13	162.5	
06/24/2010	21:42:33					Reset Total, Vol = 47.90 bbl
06/24/2010	21:42:33	11	0.0	14.13	162.5	
06/24/2010	21:42:36					136bbl fresh water
06/24/2010	21:42:36	11	0.0	14.13	162.5	
06/24/2010	21:42:37					Good returns
06/24/2010	21:42:37	11	0.0	14.13	162.5	

Well			Field		Job Start	Customer		Job Number
EF02C-28 EF02C-28			North Parachute		Jun/24/2010	Encana Oil & Gas		000378372
Date	Time 24-hr clock	Treating Pressure PSI	Flow Rate B/M	Density LB/G	Volume BBL	Message		
06/24/2010	21:50:16	176	6.4	8.59	183.6			
06/24/2010	21:55:16	190	6.3	8.43	215.3			
06/24/2010	22:00:16	298	6.2	8.40	246.9			
06/24/2010	22:05:16	502	6.2	8.40	277.9			
06/24/2010	22:09:14					Cement to surface at 122bbl away		
06/24/2010	22:09:14	411	2.4	8.40	296.4			
06/24/2010	22:09:38					14bbl cement to surface		
06/24/2010	22:09:38	418	2.4	8.40	297.4			
06/24/2010	22:10:16	442	2.4	8.40	298.9			
06/24/2010	22:15:16	955	0.0	8.40	306.7			
06/24/2010	22:19:15					Bump Top Plug		
06/24/2010	22:19:15	6	0.0	8.40	306.7			
06/24/2010	22:19:16					End Displacement		
06/24/2010	22:19:16	6	0.0	8.40	306.7			
06/24/2010	22:19:19					1bbl back		
06/24/2010	22:19:19	5	0.0	8.40	306.7			
06/24/2010	22:19:24					End Job		
06/24/2010	22:19:24	5	0.0	8.40	306.7			

Post Job Summary

Average Pump Rates,					Volume of Fluid Injected, bbl				
Slurry	N2	Mud	Maximum Rate		Total Slurry 134.0	Mud 0.0	Spacer 20.0	N2	
Treating Pressure Summary, psi					Breakdown Fluid				
Maximum 300	Final 1200	Average 300	Bump Plug to 1200	Breakdown 275	Type FreshWater	Volume 335.0 bbl		Density 8.34 lb/gal	
Avg. N2 Percent		Designed Slurry Volume 134.0 bbl		Displacement 135.9 bbl		Mix Water Temp 70 degF		Cement Circulated to Surface? <input checked="" type="checkbox"/>	Volume 14.0 bbl
								Washed Thru Perfs <input type="checkbox"/>	To
Customer or Authorized Representative Danny Asuchak			Schlumberger Supervisor Dustin C Krueger			Circulation Lost <input type="checkbox"/>		Job Completed <input checked="" type="checkbox"/>	
						-		-	