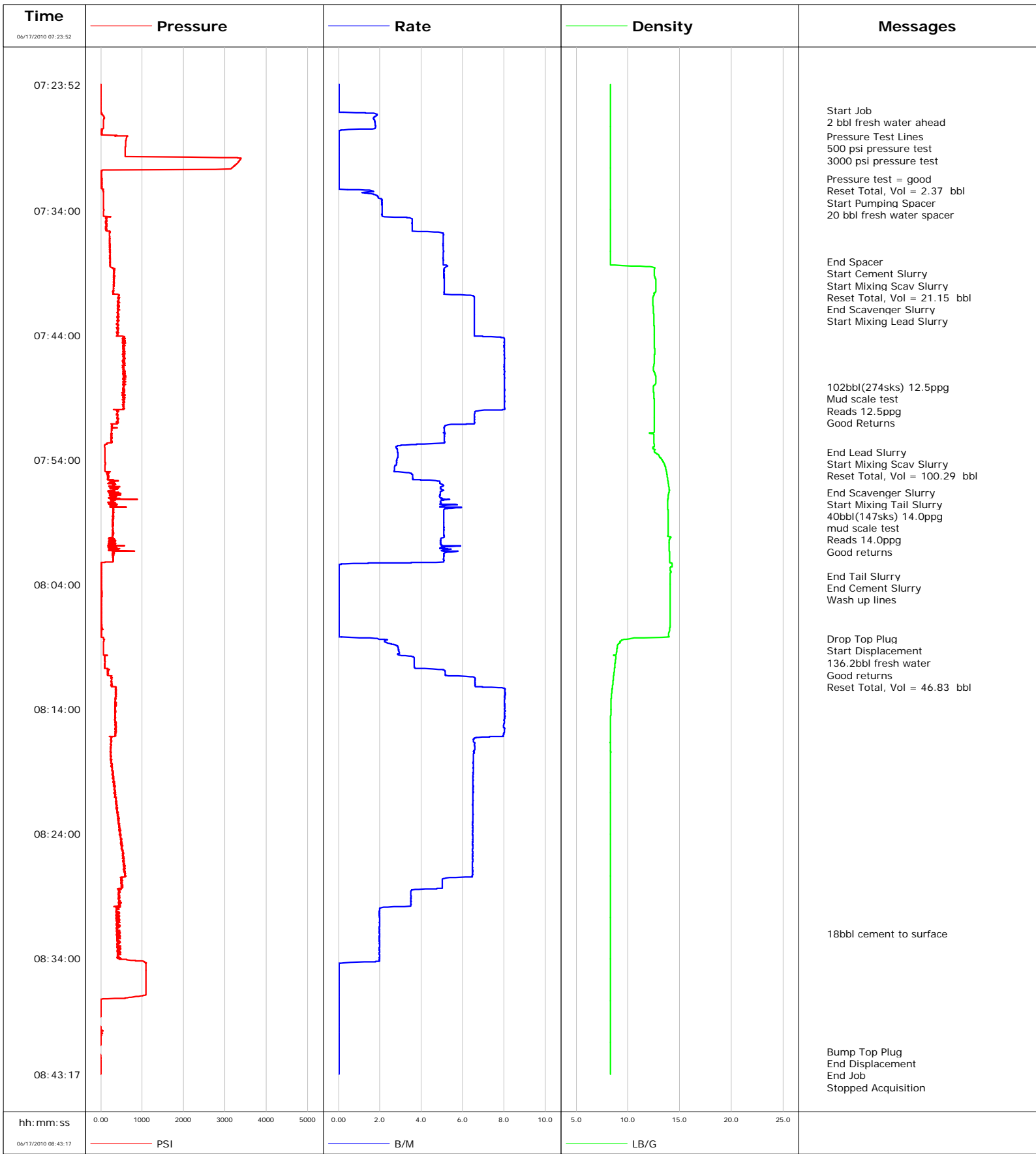


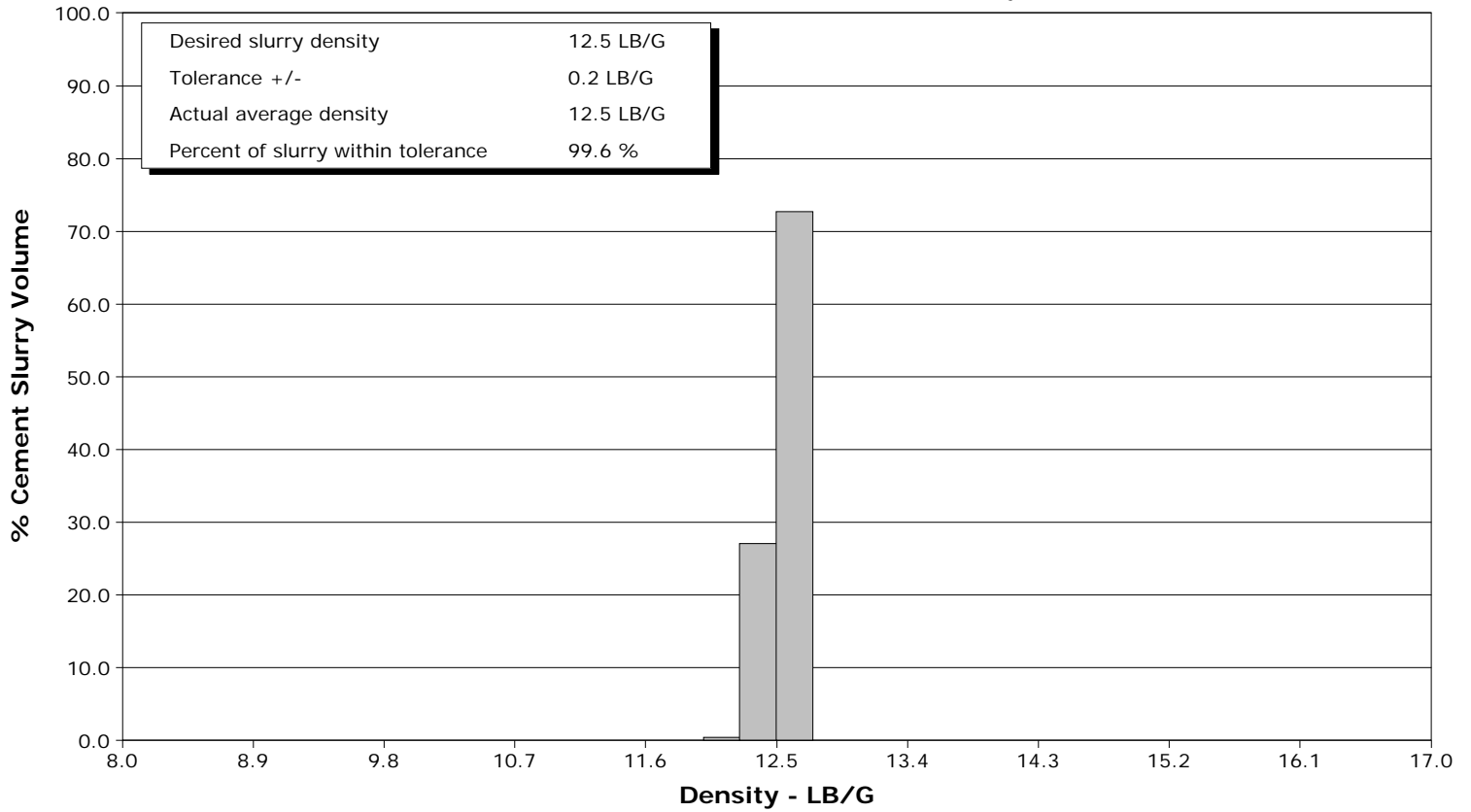
Well	EFO9A-28	Client	Encana Oil Gas
Field	North Parachute	SIR No.	000347388
Engineer	Dustin C Krueger	Job Type	1806ft 9 5/8 Surface
Country	United States	Job Date	06-17-2010



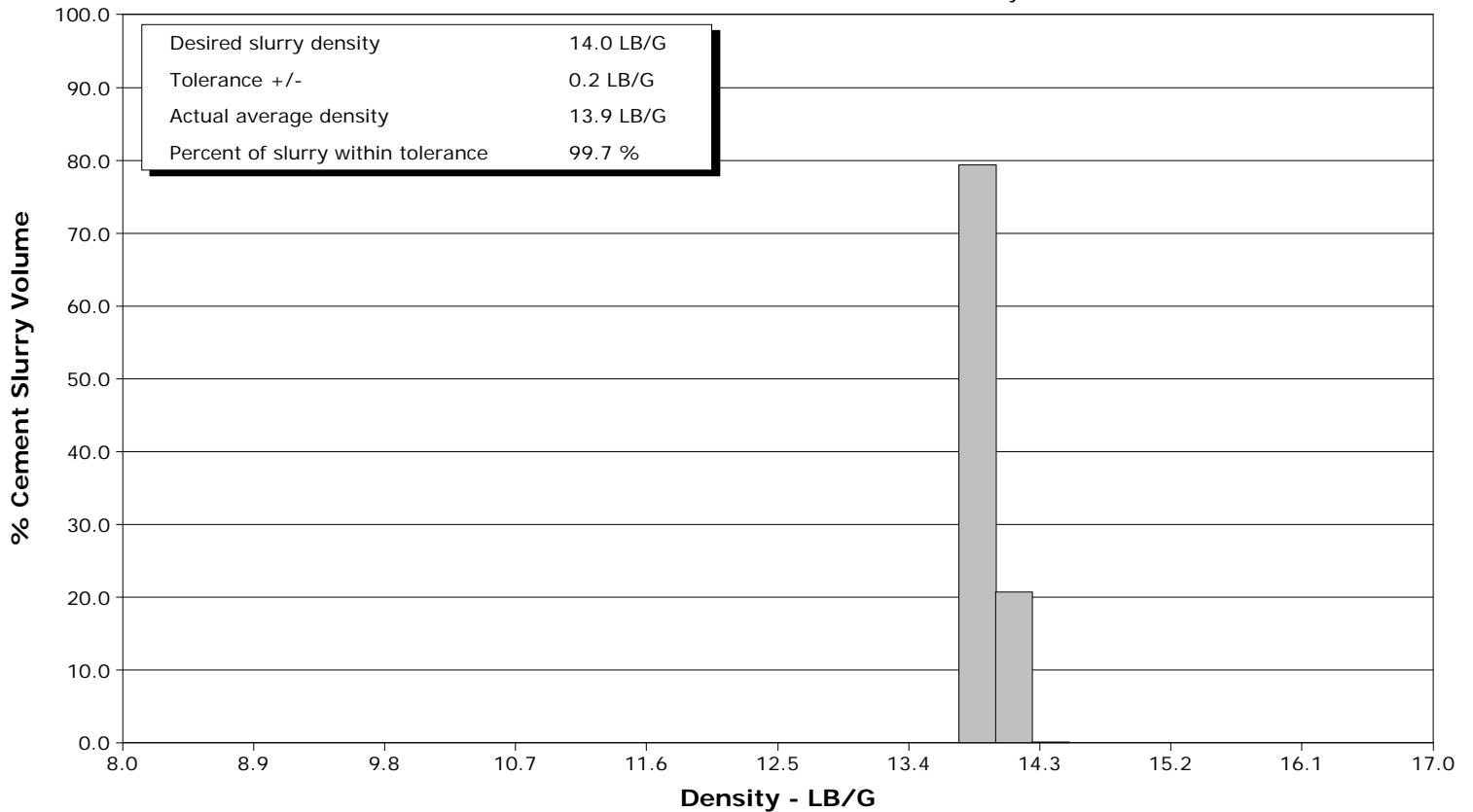
Well EFO9A-28
Field North Parachute
Engineer Dustin C Krueger
Country United States

Client Encana Oil Gas
SIR No. 000347388
Job Type 1806ft 9 5/8 Surface
Job Date 06-17-2010

Lead Slurry - 06/17/2010 07:41:01 to 06/17/2010 07:53:22



Tail Slurry - 06/17/2010 07:56:38 to 06/17/2010 08:03:19





Cementing Service Report

Customer Encana Oil & Gas	Job Number 000347388
-------------------------------------	--------------------------------

Well EFO9A-28 EFO9A-28	Location (legal) C28 595	Schlumberger Location Grand Junctin	Job Start Jun/17/2010
----------------------------------	------------------------------------	---	---------------------------------

Field North Parachute	Formation Name/Type shale	Deviation 0 deg	Bit Size 12.3 in	Well MD 1806.0 ft	Well TVD 1806.0 ft
---------------------------------	-------------------------------------	---------------------------	----------------------------	-----------------------------	------------------------------

County Garfield	State/Province Colorado	BHP	BHST 110 degF	BHCT 97 degF	Pore Press. Gradient
---------------------------	-----------------------------------	------------	-------------------------	------------------------	-----------------------------

Well Master 0631190080	API/UWI		Casing/Liner				
----------------------------------	----------------	--	---------------------	--	--	--	--

Rig Name NABORS M-13	Drilled For Gas	Service Via Land	Depth, ft	Size, in	Weight, lb/ft	Grade	Thread
--------------------------------	---------------------------	----------------------------	------------------	-----------------	----------------------	--------------	---------------

Offshore Zone	Well Class New	Well Type Development	120.0	16.000	94.0	N/A	N/A
----------------------	--------------------------	---------------------------------	-------	--------	------	-----	-----

Drilling Fluid Type Bentonite	Max. Density 9.00 lb/gal	Plastic Viscosity 12.000 cP	Tubing/Drill Pipe				
---	------------------------------------	---------------------------------------	--------------------------	--	--	--	--

Service Line Cementing	Job Type 1806ft 9 5/8 Surface					
----------------------------------	---	--	--	--	--	--

Max. Allowed Tub. Press 3500 psi	Max. Allowed Ann. Press 2200 psi	WH Connection Single Cement head	Perforations/Open Hole				
--	--	--	-------------------------------	--	--	--	--

Service Instructions						
Cement 9 5/8" casing @ 1806 FT 12 1/4 Open hole with 30% Excess 20 bbl water 274 sks 12.5 ppg NPR lead (TOL Offt) 147 sks 14.0 ppg NPR tail (TOT 1300 ft) Displace with water						
Top,	Bottom,		No. of Shots	Total Interval		
Diameter						
Treat Down Casing	Displacement 136.2 bbl	Packer Type	Packer Depth			
Tubing Vol. 0.0 bbl	Casing Vol. 139.6 bbl	Annular Vol. 110.0 bbl	Openhole Vol. 260.0 bbl			

Casing/Tubing Secured <input checked="" type="checkbox"/>	1 Hole Vol. Circulated prior to Cement <input checked="" type="checkbox"/>	Casing Tools		Squeeze Job		
--	---	---------------------	--	--------------------	--	--

Lift Pressure 863 psi	Shoe Type Guide	Squeeze Type				
---------------------------------	---------------------------	---------------------	--	--	--	--

Pipe Rotated <input type="checkbox"/>	Pipe Reciprocated <input type="checkbox"/>	Shoe Depth 1806.0 ft	Tool Type			
--	---	--------------------------------	------------------	--	--	--

No. Centralizers 20	Top Plugs 1	Bottom Plugs	Stage Tool Type		Tool Depth	
-------------------------------	-----------------------	---------------------	------------------------	--	-------------------	--

Cement Head Type Single			Stage Tool Depth		Tail Pipe Size	
-----------------------------------	--	--	-------------------------	--	-----------------------	--

Job Scheduled For Jun/17/2010 06:00	Arrived on Location Jun/17/2010 05:30	Leave Location Jun/17/2010 09:00	Collar Type Float		Tail Pipe Depth	
---	---	--	-----------------------------	--	------------------------	--

			Collar Depth 1762.0 ft		Sqz. Total Vol.	
--	--	--	----------------------------------	--	------------------------	--

Date	Time 24-hr clock	Treating Pressure PSI	Flow Rate B/M	Density LB/G	Volume BBL	Message
06/17/2010	06:52:17					Started Acquisition
06/17/2010	06:52:44					Pre Job Safty Meeting
06/17/2010	07:23:52	-3	0.0	8.31	0.0	
06/17/2010	07:25:57					Start Job
06/17/2010	07:25:57	-3	0.0	8.31	0.0	
06/17/2010	07:26:22					2 bbl fresh water ahead
06/17/2010	07:26:22	50	1.8	8.32	0.4	
06/17/2010	07:27:17	63	1.8	8.31	2.0	
06/17/2010	07:28:02					Pressure Test Lines
06/17/2010	07:28:02	644	0.0	8.32	2.4	
06/17/2010	07:28:06					500 psi pressure test
06/17/2010	07:28:06	626	0.0	8.32	2.4	
06/17/2010	07:29:58					3000 psi pressure test
06/17/2010	07:29:58	3355	0.0	8.32	2.4	
06/17/2010	07:31:26					Pressure test = good
06/17/2010	07:31:26	15	0.0	8.32	2.4	
06/17/2010	07:32:01					Reset Total, Vol = 2.37 bbl
06/17/2010	07:32:01	12	0.0	8.32	2.4	
06/17/2010	07:32:17	64	0.0	8.32	2.4	
06/17/2010	07:32:20					Start Pumping Spacer
06/17/2010	07:32:20	47	1.0	8.32	2.4	

Well		Field		Job Start		Customer		Job Number	
EFO9A-28 EFO9A-28		North Parachute		Jun/17/2010		Encana Oil & Gas		000347388	
Date	Time 24-hr clock	Treating Pressure PSI	Flow Rate B/M	Density LB/G	Volume BBL	Message			
06/17/2010	07:32:23	56	1.6	8.32	2.5				
06/17/2010	07:37:17	226	5.1	8.31	18.9				
06/17/2010	07:38:06					End Spacer			
06/17/2010	07:38:06	226	5.1	8.31	23.0				
06/17/2010	07:38:07					Start Cement Slurry			
06/17/2010	07:38:07	228	5.1	8.31	23.1				
06/17/2010	07:38:09					Start Mixing Scav Slurry			
06/17/2010	07:38:09	232	5.0	8.31	23.3				
06/17/2010	07:38:12					Reset Total, Vol = 21.15 bbl			
06/17/2010	07:38:12	224	5.1	8.31	23.5				
06/17/2010	07:41:00					End Scavenger Slurry			
06/17/2010	07:41:00	454	6.6	12.40	38.2				
06/17/2010	07:41:01					Start Mixing Lead Slurry			
06/17/2010	07:41:01	415	6.6	12.41	38.3				
06/17/2010	07:42:17	410	6.6	12.48	46.6				
06/17/2010	07:47:17	593	8.0	12.69	84.0				
06/17/2010	07:48:08					102bbl(274sks) 12.5ppg			
06/17/2010	07:48:08					Mud scale test			
06/17/2010	07:48:08	550	8.0	12.45	90.8				
06/17/2010	07:48:09					Reads 12.5ppg			
06/17/2010	07:48:09					Good Returns			
06/17/2010	07:48:09	550	8.0	12.45	90.9				
06/17/2010	07:52:17	271	5.1	12.52	119.1				
06/17/2010	07:53:22					End Lead Slurry			
06/17/2010	07:53:22	102	2.9	12.56	123.2				
06/17/2010	07:53:23					Start Mixing Scav Slurry			
06/17/2010	07:53:23	101	2.9	12.56	123.3				
06/17/2010	07:53:34					Reset Total, Vol = 100.29 bbl			
06/17/2010	07:53:34	103	2.9	12.90	123.8				
06/17/2010	07:56:36					End Scavenger Slurry			
06/17/2010	07:56:36	377	4.9	13.96	134.9				
06/17/2010	07:56:38					Start Mixing Tail Slurry			
06/17/2010	07:56:38	192	4.9	13.95	135.0				
06/17/2010	07:56:40					40bbl(147sks) 14.0ppg			
06/17/2010	07:56:40	417	4.9	13.94	135.2				
06/17/2010	07:56:41					mud scale test			
06/17/2010	07:56:41					Reads 14.0ppg			
06/17/2010	07:56:41	478	4.9	13.94	135.3				
06/17/2010	07:56:42					Good returns			
06/17/2010	07:56:42	478	4.9	13.93	135.4				
06/17/2010	07:57:17	275	5.0	13.85	138.3				
06/17/2010	08:02:17	9	1.4	14.22	163.6				
06/17/2010	08:03:19					End Tail Slurry			
06/17/2010	08:03:19	5	0.0	14.06	163.7				
06/17/2010	08:03:20					End Cement Slurry			
06/17/2010	08:03:20	5	0.0	14.06	163.7				
06/17/2010	08:03:43					Wash up lines			
06/17/2010	08:03:43	4	0.0	14.06	163.7				
06/17/2010	08:07:17	10	0.0	14.07	163.7				
06/17/2010	08:08:20					Drop Top Plug			
06/17/2010	08:08:20	66	1.9	10.37	163.8				
06/17/2010	08:08:21					Start Displacement			
06/17/2010	08:08:21	69	1.9	10.13	163.8				
06/17/2010	08:10:19					136.2bbl fresh water			

Well		Field		Job Start		Customer		Job Number	
EFO9A-28 EFO9A-28		North Parachute		Jun/17/2010		Encana Oil & Gas		000347388	
Date	Time 24-hr clock	Treating Pressure PSI	Flow Rate B/M	Density LB/G	Volume BBL	Message			
06/17/2010	08:10:19	102	3.7	8.76	169.7				
06/17/2010	08:10:35					Reset Total, Vol = 46.83 bbl			
06/17/2010	08:10:35	88	3.7	8.72	170.6				
06/17/2010	08:12:17	354	7.7	8.49	180.5				
06/17/2010	08:17:17	239	6.6	8.31	219.0				
06/17/2010	08:22:17	426	6.5	8.32	251.5				
06/17/2010	08:27:17	584	6.5	8.32	283.9				
06/17/2010	08:32:00					18bbl cement to surface			
06/17/2010	08:32:00	386	2.0	8.32	299.3				
06/17/2010	08:32:17	391	2.0	8.32	299.8				
06/17/2010	08:37:17	0	0.0	8.32	303.8				
06/17/2010	08:41:30					Bump Top Plug			
06/17/2010	08:41:30	-13	0.0	8.32	303.8				
06/17/2010	08:41:31					End Displacement			
06/17/2010	08:41:31	-13	0.0	8.32	303.8				
06/17/2010	08:41:34					End Job			
06/17/2010	08:41:34	-12	0.0	8.32	303.8				
06/17/2010	08:42:17	-12	0.0	8.32	303.8				

Post Job Summary

Average Pump Rates,					Volume of Fluid Injected, bbl				
Slurry	N2	Mud	Maximum Rate	Total Slurry	Mud	Spacer	N2		
				142.0	0.0	20.0			
Treating Pressure Summary, psi					Breakdown Fluid				
Maximum	Final	Average	Bump Plug to	Breakdown	Type	Volume	Density		
300	1200	300	1200	275	FreshWater	329.0 bbl	8.34 lb/gal		
Avg. N2 Percent	Designed Slurry Volume	Displacement	Mix Water Temp	Cement Circulated to Surface?	<input checked="" type="checkbox"/>	Volume	18.0 bbl		
	142.0 bbl	136.2 bbl	60 degF	Washed Thru Perfs	<input type="checkbox"/>	To			
Customer or Authorized Representative			Schlumberger Supervisor			Circulation Lost	<input type="checkbox"/>	Job Completed	<input checked="" type="checkbox"/>
Charlie Brown			Dustin C Krueger			-		-	