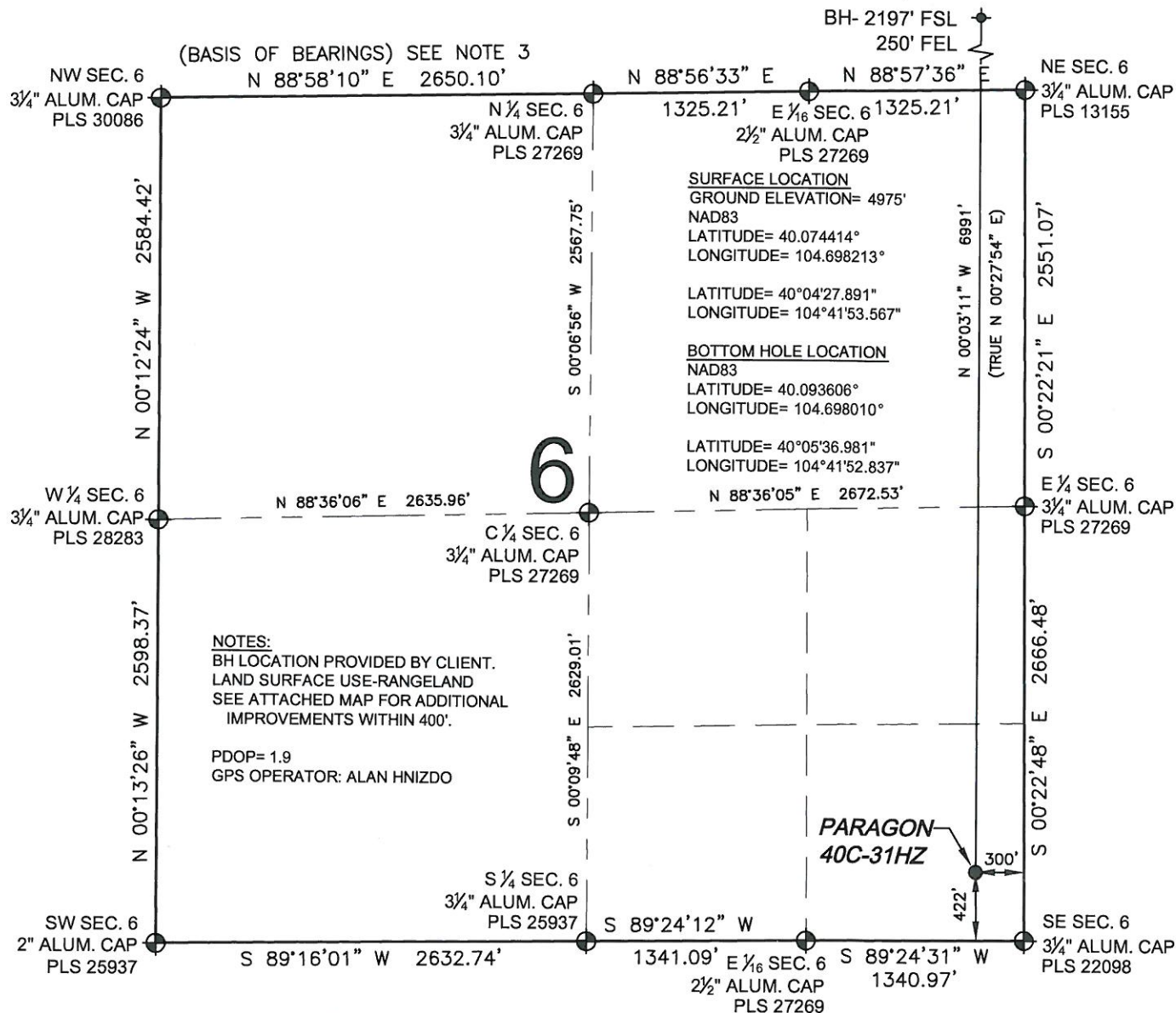


# WELL LOCATION CERTIFICATE: PARAGON 40C-31HZ

SECTION 6, TOWNSHIP 1 NORTH, RANGE 65 WEST, 6TH P.M.



## LEGEND

- = EXISTING MONUMENT    ◆ = BOTTOM HOLE  
● = PROPOSED WELL    ◆ = EXISTING WELL  
BH = BOTTOM HOLE

## NOTES:

1. THIS FIELD SURVEY CONFORMS TO THE MINIMUM STANDARDS SET BY THE C.O.G.C.C., RULE NO. 215
2. HORIZONTAL POSITIONS AND ORTHOMETRIC ELEVATIONS SHOWN AT THE WELL HEAD, ARE BASED ON GPS-RTK POSITIONS DERIVED FROM MINIMUM 2-HOUR STATIC OBSERVATIONS CORRECTED BY THE NATIONAL GEODETIC SURVEY ONLINE POSITIONING USER SERVICE, O.P.U.S. DATUM: HORIZONTAL = NAD83/2011, VERTICAL = NAVD88
3. THE BASIS OF BEARINGS ARE STATE PLANE COORDINATE SYSTEM GRID BEARINGS SHOWN HEREON BETWEEN THE DESCRIBED MONUMENTS SHOWN HEREON.
4. GRID DISTANCES ARE SHOWN, AS MEASURED IN THE FIELD, WITH TIES TO WELLS MEASURED PERPENDICULAR TO SECTION LINES.

SHEET 1 OF 2

I, BRADLEY L. LAMAN, A LICENSED PROFESSIONAL LAND SURVEYOR IN THE STATE OF COLORADO DO HEREBY CERTIFY TO **KERR-MCGEE OIL & GAS ONSHORE LP**, THAT THE SURVEY AND WELL LOCATION CERTIFICATE SHOWN HEREON WERE DONE BY ME OR UNDER MY DIRECT SUPERVISION AND THAT THE DRAWING SHOWN HEREON ACCURATELY DEPICTS THE PROPOSED LOCATION OF THE WELL. THIS CERTIFICATE DOES NOT REPRESENT A LAND SURVEY PLAT OR IMPROVEMENT SURVEY PLAT AS DEFINED BY C.R.S. 38-51-102 AND CANNOT BE RELIED UPON TO DETERMINE OWNERSHIP.

BRADLEY L. LAMAN, PLS 38345  
COLORADO LICENSED PROFESSIONAL LAND SURVEYOR  
FOR AND ON BEHALF OF P.F.S., LLC

NOTICE: ACCORDING TO COLORADO LAW YOU MUST COMMENCE ANY LEGAL ACTION BASED UPON ANY DEFECT IN THIS SURVEY WITHIN THREE YEARS AFTER YOU FIRST DISCOVER SUCH DEFECT. IN NO EVENT MAY ANY ACTION BASED UPON ANY DEFECT IN THIS SURVEY BE COMMENCED MORE THAN TEN YEARS FROM THIS SAID DATE OF THIS CERTIFICATION SHOWN HEREON.



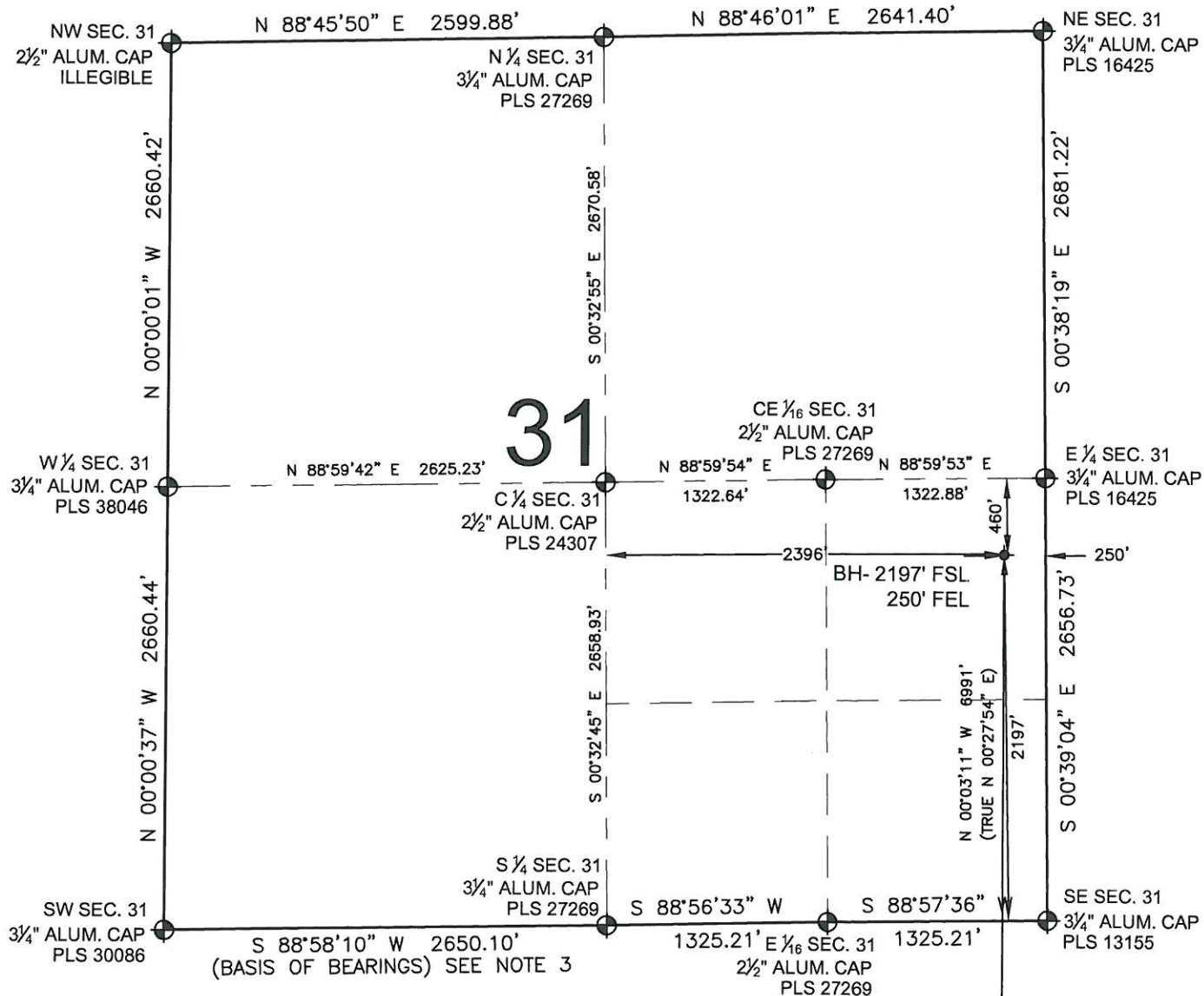
FIELD DATE:  
09-27-12  
DRAWING DATE:  
08-02-13  
BY:  
CLM  
CHECKED:  
TJN

SURFACE LOCATION:  
SE 1/4 SE 1/4,  
SEC. 6, T1N, R65W, 6TH P.M.  
WELD COUNTY, COLORADO



# WELL LOCATION CERTIFICATE: PARAGON 40C-31HZ

SECTION 31, TOWNSHIP 2 NORTH, RANGE 65 WEST, 6TH P.M.



## LEGEND

- ⊕ = EXISTING MONUMENT
- ⊙ = PROPOSED WELL
- BH = BOTTOM HOLE
- ⊕ = BOTTOM HOLE
- ⊙ = EXISTING WELL

## NOTES:

1. THIS FIELD SURVEY CONFORMS TO THE MINIMUM STANDARDS SET BY THE C.O.G.C.C., RULE NO. 215
2. HORIZONTAL POSITIONS AND ORTHOMETRIC ELEVATIONS SHOWN AT THE WELL HEAD, ARE BASED ON GPS-RTK POSITIONS DERIVED FROM MINIMUM 2-HOUR STATIC OBSERVATIONS CORRECTED BY THE NATIONAL GEODETIC SURVEY ONLINE POSITIONING USER SERVICE, O.P.U.S. DATUM: HORIZONTAL = NAD83/2011, VERTICAL = NAVD88
3. THE BASIS OF BEARINGS ARE STATE PLANE COORDINATE SYSTEM GRID BEARINGS SHOWN HEREON BETWEEN THE DESCRIBED MONUMENTS SHOWN HEREON.
4. GRID DISTANCES ARE SHOWN, AS MEASURED IN THE FIELD, WITH TIES TO WELLS MEASURED PERPENDICULAR TO SECTION LINES.

SHEET 2 OF 2

BRADLEY L. LAMAN, PLS 38345  
COLORADO LICENSED PROFESSIONAL LAND SURVEYOR  
FOR AND ON BEHALF OF P.F.S., LLC

PREPARED BY: <b>PFS</b> Petroleum Field Services, LLC 1801 W. 13th Ave. Denver, CO 80204	FIELD DATE: 09-27-12 DRAWING DATE: 08-02-13 BY: CLM CHECKED: TJN	SURFACE LOCATION: SE 1/4 SE 1/4, SEC. 6, T1N, R65W, 6TH P.M. WELD COUNTY, COLORADO
--	---	---

NOTICE: ACCORDING TO COLORADO LAW YOU MUST COMMENCE ANY LEGAL ACTION BASED UPON ANY DEFECT IN THIS SURVEY WITHIN THREE YEARS AFTER YOU FIRST DISCOVER SUCH DEFECT. IN NO EVENT MAY ANY ACTION BASED UPON ANY DEFECT IN THIS SURVEY BE COMMENCED MORE THAN TEN YEARS FROM THIS SAID DATE OF THIS CERTIFICATION SHOWN HEREON.