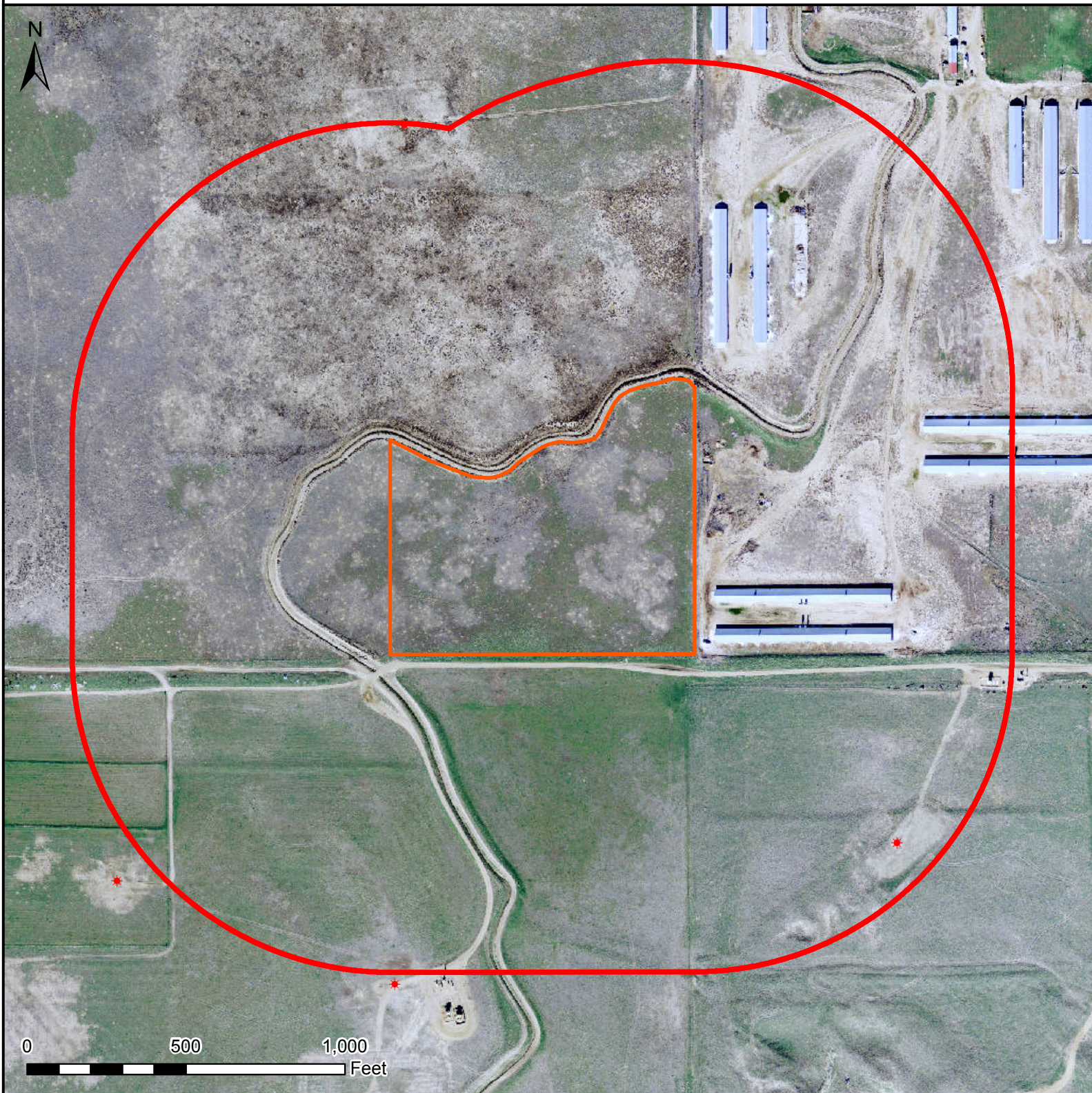


HYDROLOGY MAP PARAGON 9N-31HZ



Legend

- Well pad (proposed)
- 1000' buffer
- Existing oil/gas well (COGCC)

Nearest Surface Water Feature

Canal: 318' NW
Canal elevation: 4974'
Well elevation: 4975'

All measurements are made from
the reference well.



Date created: 10/8/2013
Created by: APC Regulatory GIS
Scale: 1:5,000
Projection: NAD83 UTM 13N