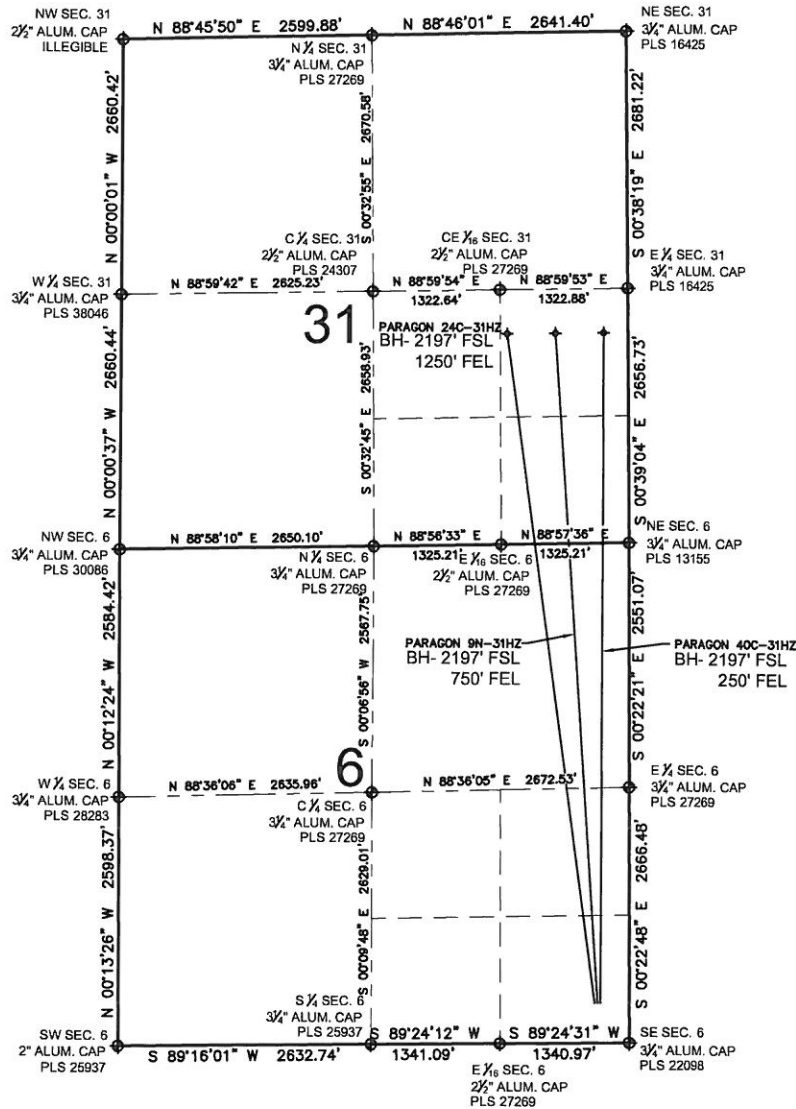


# PARAGON 9N-31HZ MULTI-WELL PLAN

SECTION 6, TOWNSHIP 1 NORTH, RANGE 65 WEST, 6TH P.M.



## NOTES:

PARAGON 40C-31HZ TO BE AT 422' FSL, 300' FEL.  
 BOTTOM HOLE AT 2197' FSL & 250' FEL, SEC. 31, T2N, R65W.  
 PARAGON 9N-31HZ TO BE AT 422' FSL, 330' FEL.  
 BOTTOM HOLE AT 2197' FSL & 750' FEL, SEC. 31, T2N, R65W.  
 PARAGON 24C-31HZ TO BE AT 422' FSL, 360' FEL.  
 BOTTOM HOLE AT 2197' FSL & 1250' FEL, SEC. 31, T2N, R65W.

## LEGEND

⊕ = EXISTING MONUMENT    ⊕ = BOTTOM HOLE  
 ● = PROPOSED WELL    ◆ = EXISTING WELL  
 BH = BOTTOM HOLE

PREPARED BY:

**PFS** llc

Petroleum Field Services, LLC  
 1801 W. 13th Ave.  
 Denver, CO 80204

KERR-MCGEE OIL & GAS ONSHORE LP

FIELD DATE:

09-27-12

SURFACE LOCATION:

SE 1/4 SE 1/4, SEC. 6, T1N, R65W, 6TH P.M.  
 WELD COUNTY, COLORADO

DRAWING DATE:

08-02-13

