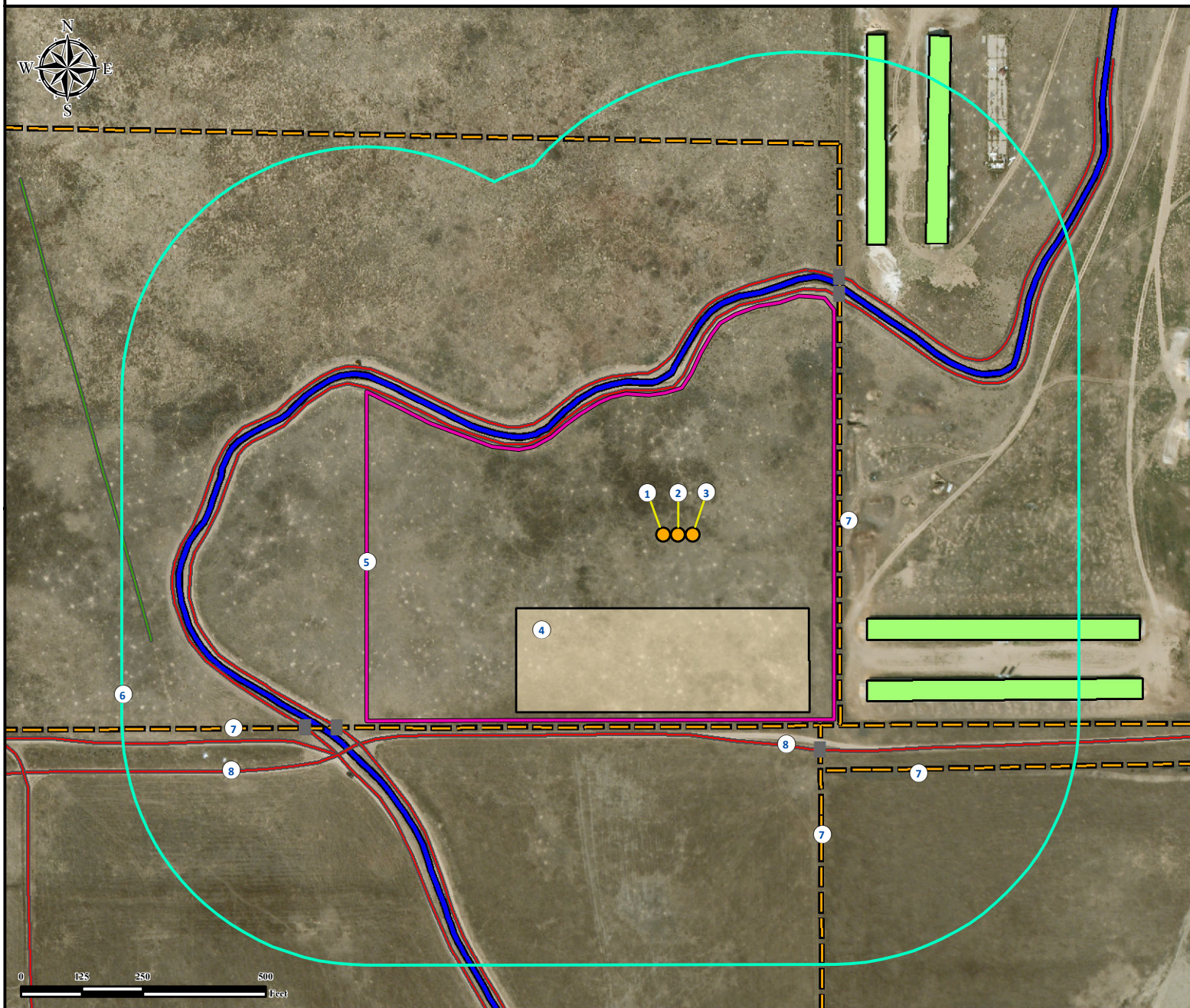


Location Drawing

PARAGON 9N-31HZ

Horizontal Multi Well Pad

SE¼ SE¼ SECTION 6, TOWNSHIP 1 NORTH, RANGE 65 WEST OF THE 6TH PRINCIPAL MERIDIAN



1. Proposed Well PARAGON 24C-31HZ.

2. Proposed Well PARAGON 9N-31HZ.

3. Proposed Well PARAGON 40C-31HZ.

4. Proposed Facility PARAGON 9N-31HZ is ±150' S.

5. Operational Disturbance Area.

6. 500' Radius.

7. Fences are ±330' E, ±393' S, ±486' SE, and ±562' SE

8. Private Roads are ±303' N, ±338' NW, ±409' S, and ±829' SW.

9. Canal is ±318' NW.

10. Gates are ±526' SE, ±593' NE, ±622' NE, ±798' SW, and ±861' SW.

11. Outbuildings are ±420' SE, ±486' SE, ±709' NE, and ±783' NE.

Legend

● Proposed Well

■ Gate

□ Disturbance Area

□ 500' Radius

■ Outbuildings

■ Proposed Facility

□ Fence

■ Canal

■ Private Road

Reference Location

** All measurements are made from Reference Well PARAGON 9N-31HZ **
 Lat: 40.074414° Long:-104.698320° (NAD83)
 Elevation: 4975 Feet

Surface Use: Rangeland



Use our resources to find yours!
www.petro-fs.com
 (303) 928-7128

Field Date: 09/27/2012
 Drafting Date: 08/22/2013
 Drafter: GWB
 Revision: 1

Data Sources:

- Aerial courtesy Anadarko Petroleum Corporation (2010)

Prepared for:



KERR-MCGEE OIL & GAS ONSHORE LP