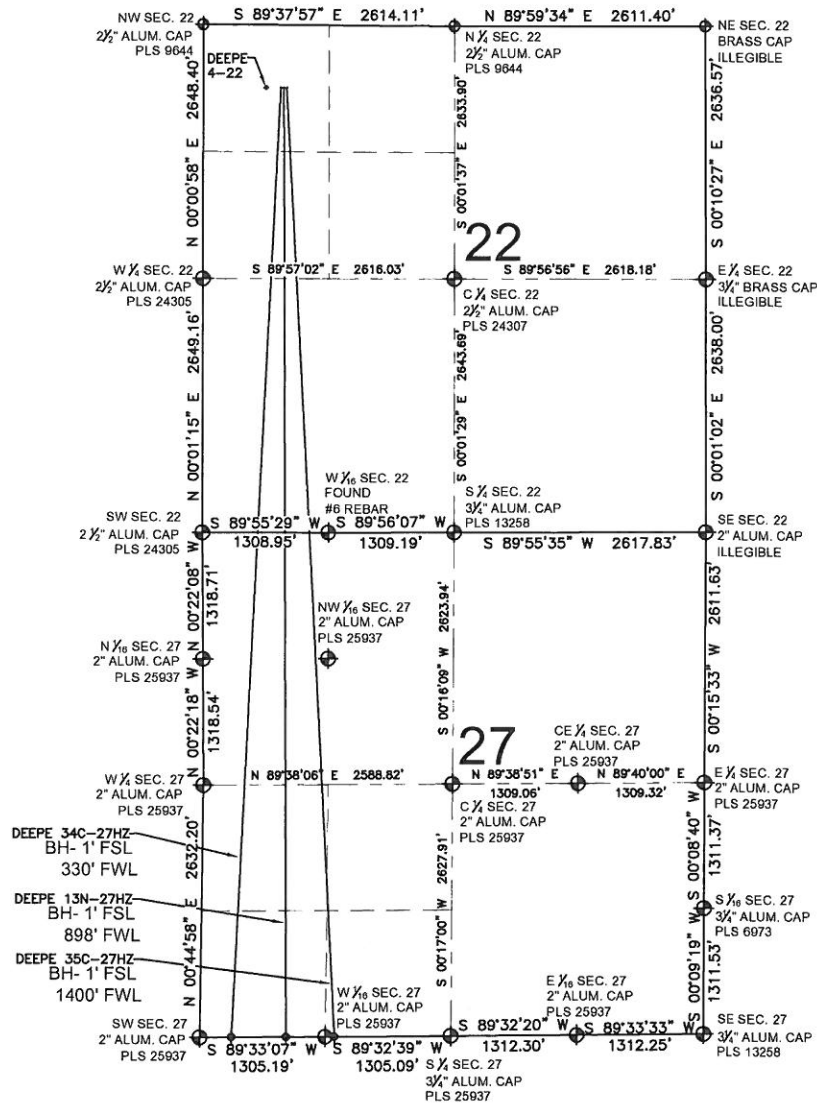


# DEEPE 34C-27HZ MULTI-WELL PLAN

SECTION 22, TOWNSHIP 2 NORTH, RANGE 67 WEST, 6TH P.M.



## NOTES:

DEEPE 34C-27HZ TO BE AT 656' FNL, 810' FWL.  
BOTTOM HOLE AT 1' FSL & 330' FWL, SEC 27  
DEEPE 13N-27HZ TO BE AT 656' FNL, 840' FWL.  
BOTTOM HOLE AT 1' FSL & 898' FWL, SEC 27  
DEEPE 35C-27HZ TO BE AT 656' FNL, 870' FWL.  
BOTTOM HOLE AT 1' FSL & 1400' FWL, SEC 27  
DEEPE 4-22 IS 656' FNL, 660' FWL.

## LEGEND

⊕ = EXISTING MONUMENT    ⊕ = BOTTOM HOLE    BH= BOTTOM HOLE  
• = PROPOSED WELL    ♦ = EXISTING WELL

PREPARED BY:

**PFS**



Petroleum Field Services, LLC  
1801 W. 13th Ave.  
Denver, CO 80204

KERR-MCGEE OIL & GAS ONSHORE LP

FIELD DATE:  
05-06-13

DRAWING DATE:  
05-09-13

SURFACE LOCATION:

NW 1/4 NW 1/4, SEC. 22, T2N, R67W, 6TH P.M.  
WELD COUNTY, COLORADO

