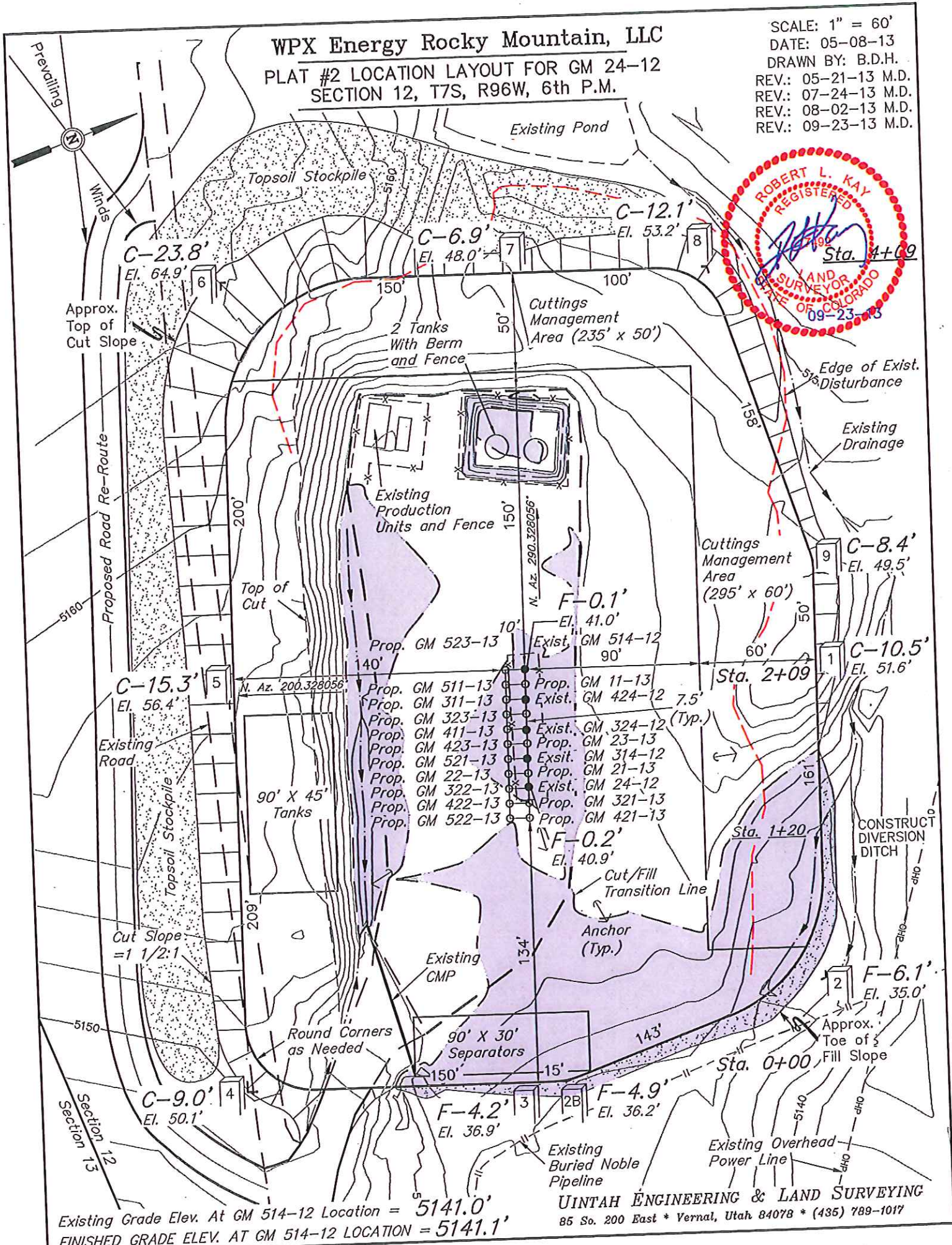


WPX Energy Rocky Mountain, LLC
 PLAT #2 LOCATION LAYOUT FOR GM 24-12
 SECTION 12, T7S, R96W, 6th P.M.

SCALE: 1" = 60'
 DATE: 05-08-13
 DRAWN BY: B.D.H.
 REV.: 05-21-13 M.D.
 REV.: 07-24-13 M.D.
 REV.: 08-02-13 M.D.
 REV.: 09-23-13 M.D.



Existing Grade Elev. At GM 514-12 Location = 5141.0'
 FINISHED GRADE ELEV. AT GM 514-12 LOCATION = 5141.1'

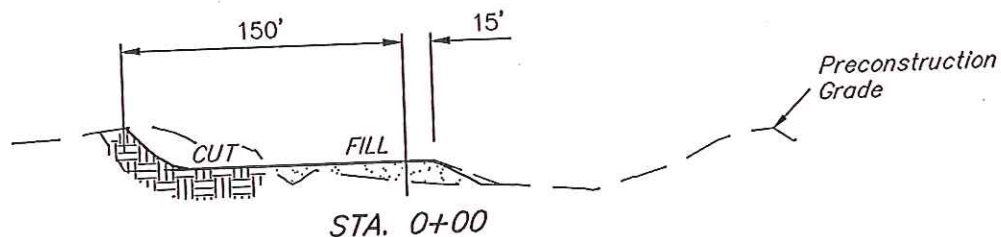
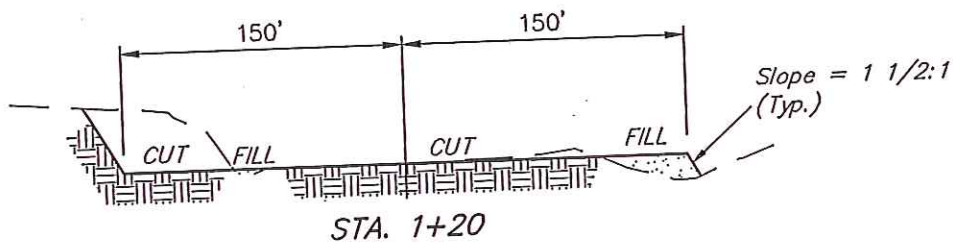
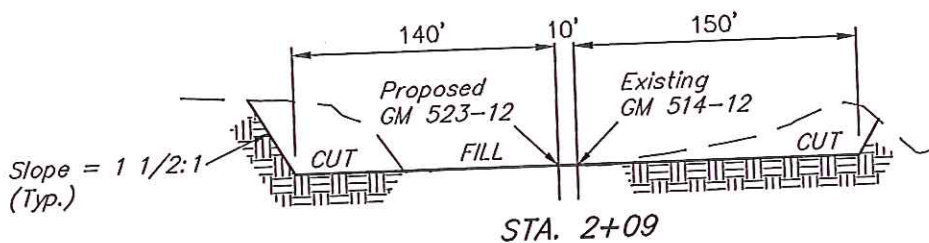
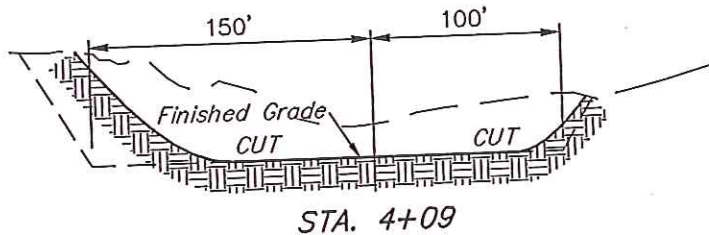
UINTAH ENGINEERING & LAND SURVEYING
 85 So. 200 East * Vernal, Utah 84078 * (435) 789-1017

WPX Energy Rocky Mountain, LLC

PLAT #3 TYPICAL CROSS SECTION FOR GM 24-12 SECTION 12, T7S, R96W, 6th P.M.

1" = 40'
X-Section
Scale
1" = 100'

DATE: 05-08-13
DRAWN BY: B.D.H.
REV.: 05-21-13 M.D.
REV.: 07-24-13 M.D.



NOTE:

Topsoil should not be Stripped Below Finished Grade on Substructure Area.

* NOTE:
FILL QUANTITY INCLUDES 5% FOR COMPACTION

APPROXIMATE YARDAGES

(6") Topsoil Stripping	= 1,990 Cu. Yds.
Remaining Location	= 20,680 Cu. Yds.
TOTAL CUT	= 22,670 CU. YDS.
FILL	= 2,680 CU. YDS.

EXCESS MATERIAL	= 19,990 Cu. Yds.
Topsoil	= 1,990 Cu. Yds.
EXCESS UNBALANCE (After Interim Rehabilitation)	= 18,000 Cu. Yds.

UINTAH ENGINEERING & LAND SURVEYING
85 So. 200 East * Vernal, Utah 84078 * (435) 789-1017