

CHEVRON - MID-CONTINENT
760 Horizon Dr
Grand Junction, CO 81506

SKR 598-25-BV-16

Stage 4
Garfield County, Colorado

Sales Order: 900715107

Post Job Report

For: Matthew Mandarich
Date: Wednesday, September 04, 2013

Notice: Although the information contained in this report is based on sound engineering practices, the copyright owner(s) does (do) not accept any responsibility whatsoever, in negligence or otherwise, for any loss or damage arising from the possession or use of the report whether in terms of correctness or otherwise. The application, therefore, by the user of this report or any part thereof, is solely at the user's own risk.

HALLIBURTON

Table of Contents

1.0 Well Information 3

1.1 Customer Information 3

1.2 Pipe Information 4

1.3 Perforation Intervals 4

2.0 Actual Stage Summary 5

2.1 Stage Summary 5

3.0 Performance Highlights..... 8

3.1 Job Summary..... 8

3.2 Job Event Log 9

4.0 Attachments..... 10

4.1 Treating Chart 10

4.2 Chemical Chart 11

4.3 Averages Chart..... 12

4.4 Net Pressure Plot 13

1.0 WELL INFORMATION**1.1 Customer Information**

Customer	CHEVRON - MID-CONTINENT
Sales Order	900715107
Well Name	SKR
Interval	4
Well Number	598-25-BV-16
Job Date	04-Sep-2013
County	Garfield
State	Colorado
UWI/API	05-045-15422-0000
Lease Name	SKR
Country	United States of America
H2S Present	Unknown
CO2 Present	Unknown
Customer Representative	Matthew Mandarich
Customer Telephone Number	303-675-4449
Halliburton Representative	SWANSON

1.2 Pipe Information

Equipment	Top MD ft	Bottom MD ft	OD in	ID in	Grade	Weight lb/ft
Surface Pipe	0.0	50.0	5.000	4.000		
Casing	0.0	4194.0	4.500	4.000	N-80	11.60

1.3 Perforation Intervals

Top MD ft	Bottom MD ft	Number of Shots	Perf Density spf	Perf Phasing °	Perf Orientation °	Perf Diameter in	Perf Formation
3956.0	4174.0	27	0.1	2	0	0.340	Perforation Interval 1

2.0 ACTUAL STAGE SUMMARY

2.1 Stage Summary

Stage Number	Stage Time	Start Time	End Time	Time min	Pump Time min	Max Treat Pr psi	Max Slurry Rate bpm
1	04-Sep-13 13:43:59	13:42:41	04-Sep-13 13:43:59	1.33	1.32	3924	52.6
2	04-Sep-13 13:48:23	13:44:00	04-Sep-13 13:48:23	4.40	4.40	4086	64.7
3	04-Sep-13 14:26:52	13:48:24	04-Sep-13 14:26:52	38.47	38.47	3603	64.8
4	04-Sep-13 14:52:51	14:26:53	04-Sep-13 14:52:51	25.99	25.92	3657	64.7
5	04-Sep-13 15:10:53	14:52:52	04-Sep-13 15:10:53	18.03	18.03	3844	64.6
6	04-Sep-13 15:13:54	15:10:54	04-Sep-13 15:13:54	3.02	2.87	4680	64.7
7	04-Sep-13 15:15:13	15:13:55	04-Sep-13 15:15:13	1.32	0.00	0	0.0

Stage Number	Stage Time	Max Wellhead Rate bpm	Max Prop Conc lb/gal	Max Slurry Prop Conc lb/gal	Avg Treating Pressure psi	Avg Clean Rate bpm	Avg Slurry Rate bpm
1	04-Sep-13 13:43:59	52.6	0.00	0.00	3145	35.9	35.1
2	04-Sep-13 13:48:23	64.7	0.39	0.40	3566	61.2	62.5
3	04-Sep-13 14:26:52	64.8	0.48	0.48	3461	62.7	64.7
4	04-Sep-13 14:52:51	64.7	0.83	0.84	3423	61.8	64.6

Stage Number	Stage Time	Max Wellhead Rate bpm	Max Prop Conc lb/gal	Max Slurry Prop Conc lb/gal	Avg Treating Pressure psi	Avg Clean Rate bpm	Avg Slurry Rate bpm
5	04-Sep-13 15:10:53	64.6	0.98	0.98	3706	61.1	64.4
6	04-Sep-13 15:13:54	64.7	0.12	0.00	3666	54.5	55.7
7	04-Sep-13 15:15:13	0.0	0.00	0.00	0	0.0	0.0

Stage Number	Stage Time	Avg Wellhead Rate bpm	Avg Slurry Prop Conc lb/gal	Avg Hydraulic Horsepower hp	Clean Volume gal	Slurry Volume gal	Wellhead Volume gal
1	04-Sep-13 13:43:59	35.1	0.00	2706	1993	1952	1952
2	04-Sep-13 13:48:23	62.5	0.22	5457	11317	11543	11543
3	04-Sep-13 14:26:52	64.7	0.44	5487	101250	104549	104549
4	04-Sep-13 14:52:51	64.6	0.66	5420	67507	70532	70532
5	04-Sep-13 15:10:53	64.4	0.88	5846	46244	48766	48766
6	04-Sep-13 15:13:54	55.7	0.00	5000	6573	6716	6716
7	04-Sep-13 15:15:13	0.0	0.00	0	0	0	0
Total					234883	244058	244058

Stage Number	Stage Time	Prop Mass 100*lb
1	04-Sep-13 13:43:59	0.00

Stage Number	Stage Time	Prop Mass 100*lb
2	04-Sep-13 13:48:23	25.10
3	04-Sep-13 14:26:52	452.79
4	04-Sep-13 14:52:51	449.60
5	04-Sep-13 15:10:53	411.69
6	04-Sep-13 15:13:54	0.00
7	04-Sep-13 15:15:13	0.00
Total		1339.18

3.0 PERFORMANCE HIGHLIGHTS

3.1 Job Summary

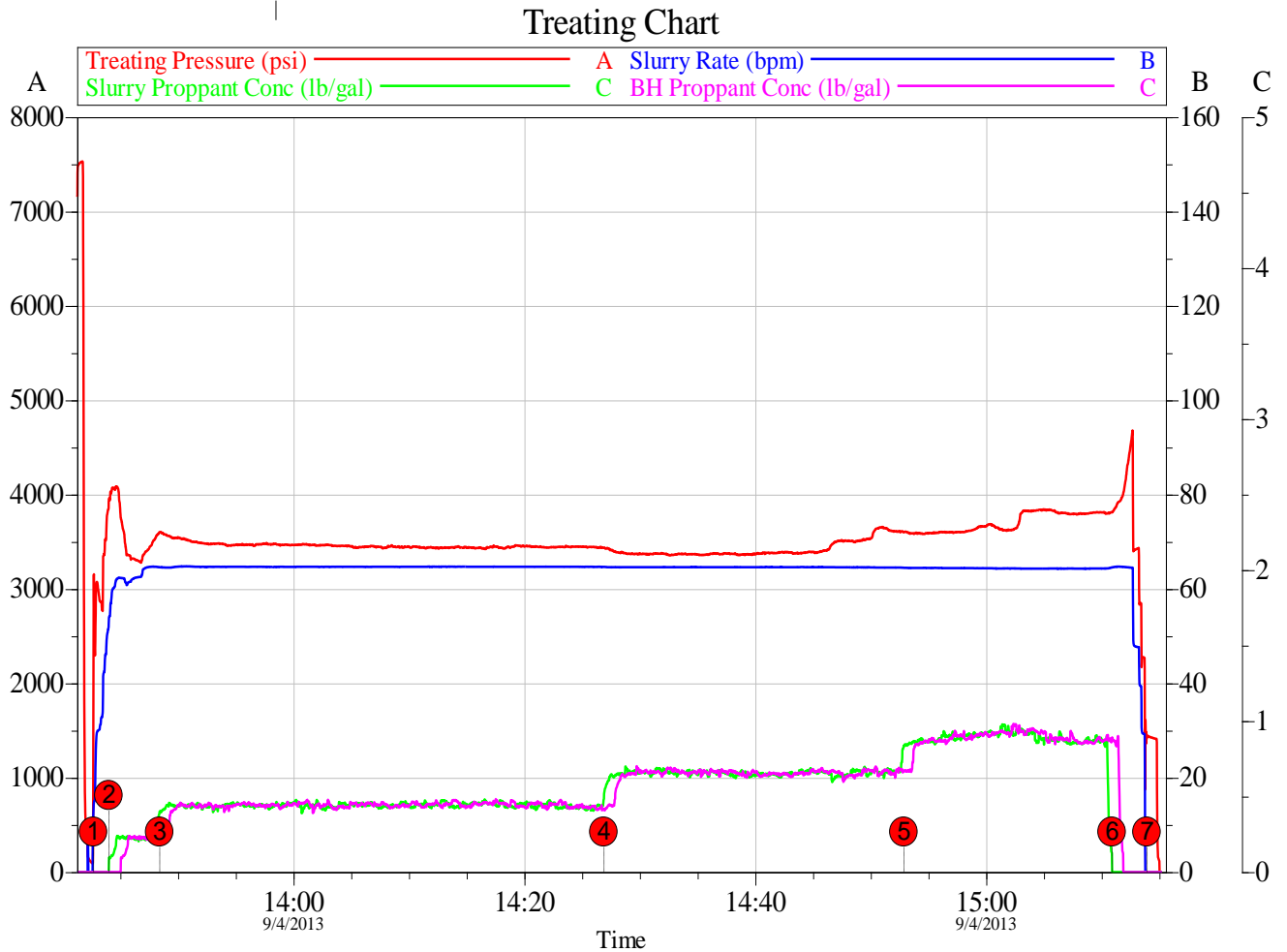
Start Time	04-Sep-13 13:39:21	
End Time	04-Sep-13 15:15:13	
Chevron 598-25-BV-04 Stage 4		
9/4/2013		
Engineering Notes		
Engineer on Location	Ben Williams	
ISDP	1450	psi
Initial Pressure(Breakdown)	3155	psi
Max Pressure	4680	psi
Average Pressure	3486	psi
Max Rate	64.82	bpm
Average Rate	6464	bpm
Proppant Design Volume	149,063	lbs
Proppant in Formation	149,000	lbs
FR-66 Used	48	gals
BE-7 Used	191	gals
SandWedge WF	152	gals
SCW-4212 Used	37	gals
Clean Volume	5567	bbbls
Start Time	1:42 PM	HH:MM
End Time	3:15 PM	HH:MM
Job Notes:		

3.2 Job Event Log

Stage Number	Event Number	Time	Description	Comment	Treating Pressure psi	Slurry Rate bpm	Braden Pressure psi	Job Slurry Vol gal
	1	04-Sep-13 13:39:21	Start Job	Starting Job				
1		13:42:40	Stage 1	Pad	2632	13.7	215	10
		13:42:41	Start Averaging	Start Avg Trt 1	3144	14.4	215	20
	2	13:42:59	Break Formation	Break Formation	3072	29.7	215	281
2		13:44:00	Stage 2	Proppant Laden Fluid	3954	52.6	212	1952
3		13:48:24	Stage 3	Proppant Laden Fluid	3603	64.6	206	13495
4		14:26:53	Stage 4	Proppant Laden Fluid	3438	64.7	167	118044
5		14:52:52	Stage 5	Proppant Laden Fluid	3603	64.5	145	188576
6		15:10:54	Stage 6	Flush	3814	64.6	132	237342
7		15:13:55	Stage 7	Shut-In	1454	0.0	131	244058
		15:15:13	End Averaging	End Avg Trt 1	-6	0.0	131	244058
	3	15:15:17	End Job	Ending Job	-6	0.0	131	244058

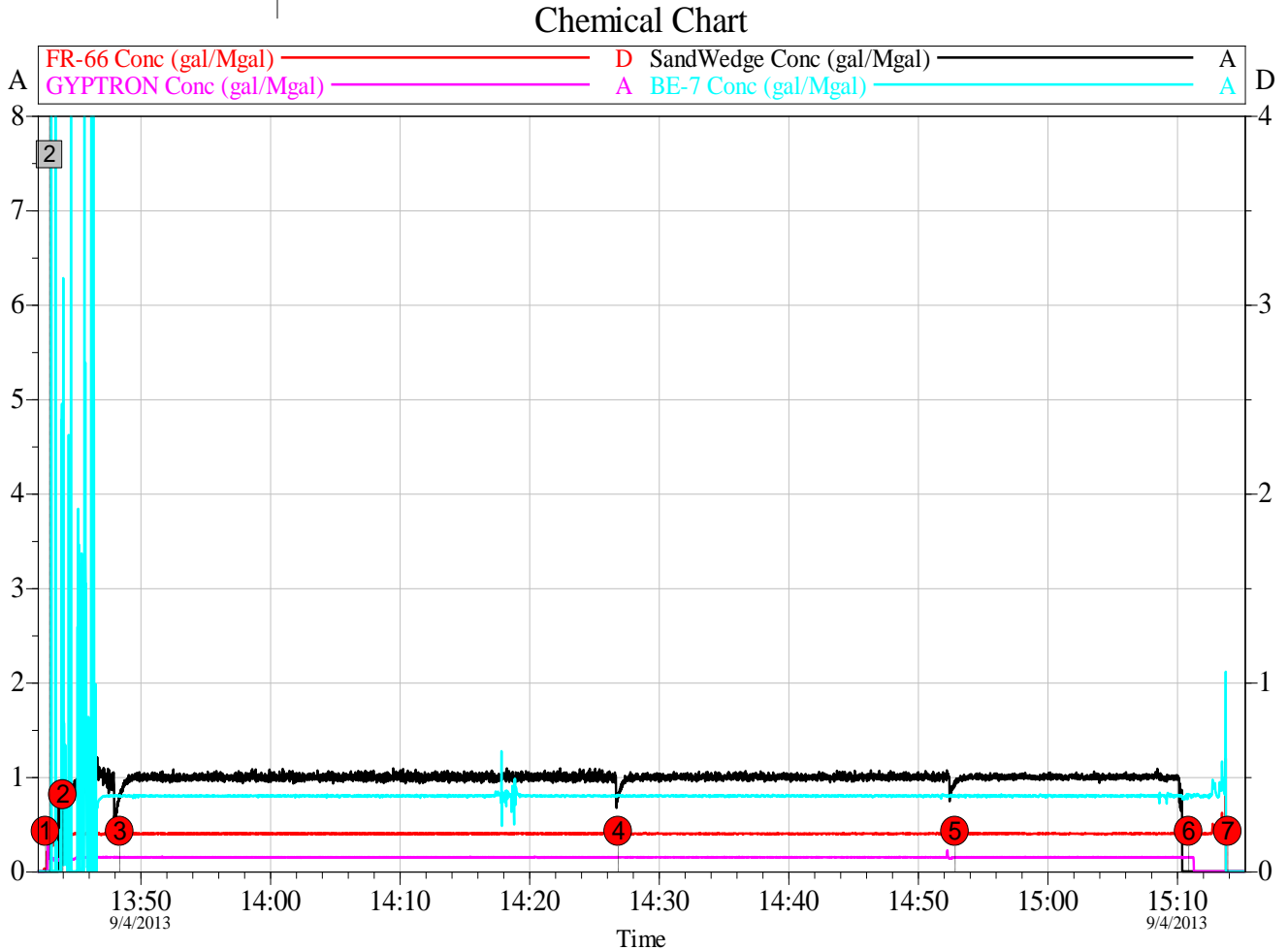
4.0 ATTACHMENTS

4.1 Treating Chart



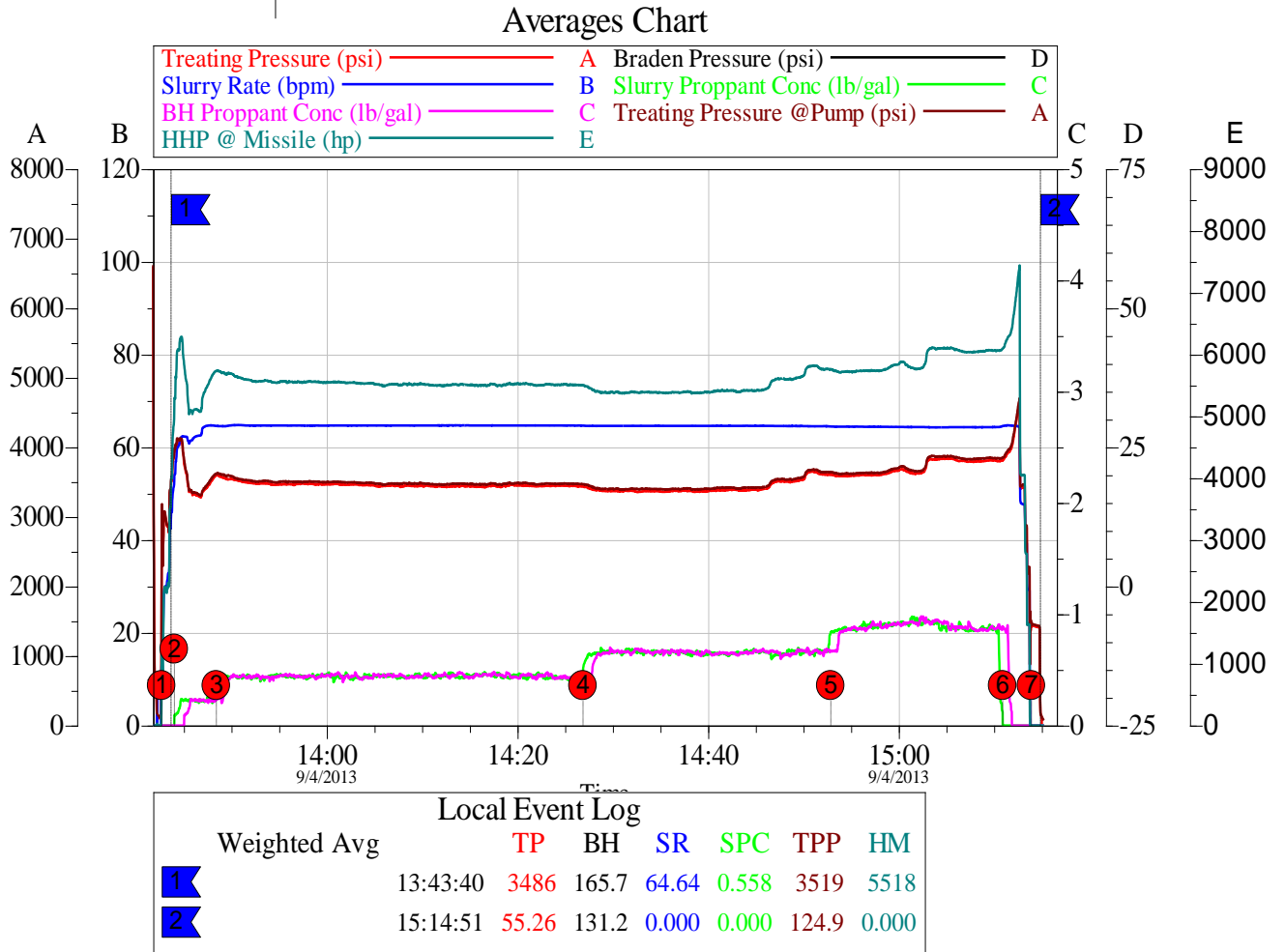
Customer: CHEVRON - MID-CONTINENT EBIZ	Job Date: 04-Sep-2013	Sales Order #: 900715107
Well Description: SKR 598-25-BV-16	UWI: 05-045-15422-0000	

4.2 Chemical Chart



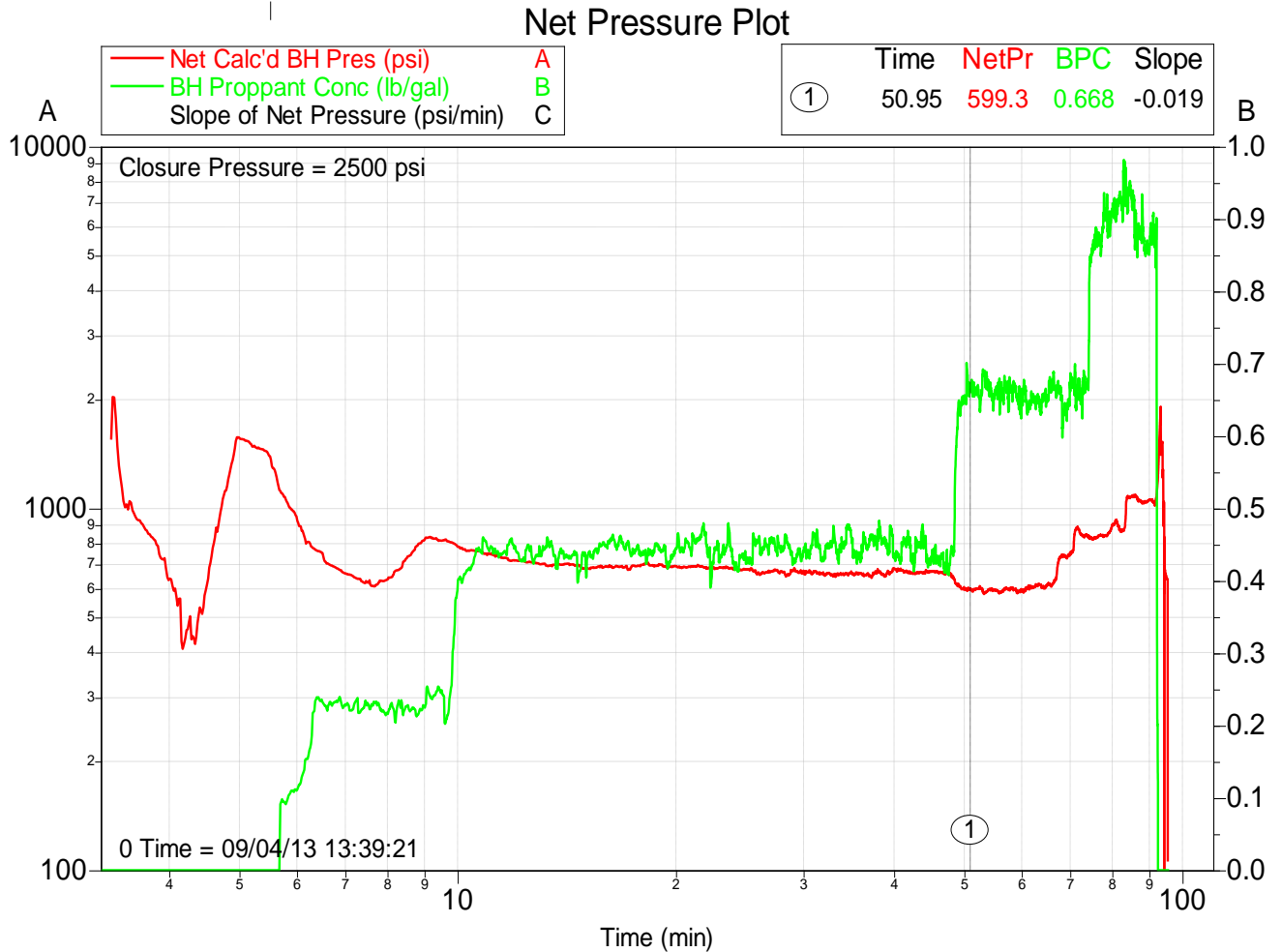
Customer: CHEVRON - MID-CONTINENTEBIZ	Job Date: 04-Sep-2013	Sales Order #: 900715107
Well Description: SKR 598-25-BV-16	UWI: 05-045-15422-0000	

4.3 Averages Chart



Customer:	CHEVRON - MID-CONTINENTEBIZ	Job Date:	04-Sep-2013	Sales Order #:	900715107
Well Description:	SKR 598-25-BV-16	UWI:	05-045-15422-0000		

4.4 Net Pressure Plot



Customer: CHEVRON - MID-CONTINENT EBIZ	Job Date: 04-Sep-2013	Sales Order #: 900715107
Well Description: SKR 598-25-BV-16	UWI: 05-045-15422-0000	