

CHEVRON - MID-CONTINENT EBIZ
760 Horizon Dr
Grand Junction, CO 81506

SKR 598-25-BV-04

Interval 3
Garfield County, Colorado

Sales Order: 900681547

Post Job Report

For: Kieth Hejl
Date: Wednesday, August 21, 2013

Notice: Although the information contained in this report is based on sound engineering practices, the copyright owner(s) does (do) not accept any responsibility whatsoever, in negligence or otherwise, for any loss or damage arising from the possession or use of the report whether in terms of correctness or otherwise. The application, therefore, by the user of this report or any part thereof, is solely at the user's own risk.

HALLIBURTON

Table of Contents

1.0 Well Information 3

 1.1 Customer Information 3

 1.2 Pipe Information 4

 1.3 Perforation Intervals 4

2.0 Actual Stage Summary 5

 2.1 Stage Summary 5

3.0 Performance Highlights..... 8

 3.1 Job Summary..... 8

 3.2 Job Event Log 9

4.0 Attachments..... 10

 4.1 Treating Chart 10

 4.2 Chemical Chart 11

 4.3 Averages Chart 12

 4.4 Net Pressure Plot 13

1.0 WELL INFORMATION**1.1 Customer Information**

Customer	CHEVRON - MID-CONTINENT EBIZ
Sales Order	900681547
Well Name	SKR
Rig Type	None
Interval	3
Well Number	598-25-BV-04
Job Date	21-Aug-2013
County	Garfield
State	Colorado
UWI/API	0504515275
Country	United States of America
H2S Present	Unknown
CO2 Present	Unknown
Customer Representative	Kieth Hejl
Halliburton Representative	Swanson

1.2 Pipe Information

Equipment	Top MD ft	Bottom MD ft	OD in	ID in	Weight lb/ft
Surface Pipe	0.0	50.0	5.000	4.000	
Casing	0.0	4440.0	4.500	4.000	11.60

1.3 Perforation Intervals

Top MD ft	Bottom MD ft	Number of Shots	Perf Density spf	Perf Diameter in
4223.0	4390.0	27	0.2	0.340

2.0 ACTUAL STAGE SUMMARY

2.1 Stage Summary

Stage Number	Stage Time	Start Time	End Time	Time min	Pump Time min	Max Treat Pr psi	Max Slurry Rate bpm
1	21-Aug-13 09:25:38	09:24:27	21-Aug-13 09:25:38	1.22	1.17	4374	55.1
2	21-Aug-13 09:28:48	09:25:39	21-Aug-13 09:28:48	3.17	3.17	4518	64.2
3	21-Aug-13 09:56:02	09:28:49	21-Aug-13 09:56:02	27.23	27.23	3966	64.3
4	21-Aug-13 10:14:25	09:56:03	21-Aug-13 10:14:25	18.38	18.38	3821	64.3
5	21-Aug-13 10:26:59	10:14:26	21-Aug-13 10:26:59	12.57	12.57	3803	64.3
6	21-Aug-13 10:30:12	10:27:00	21-Aug-13 10:30:12	3.22	3.08	3890	64.3
7	21-Aug-13 10:30:33	10:30:13	21-Aug-13 10:30:33	0.35	0.00	0	0.0

Stage Number	Stage Time	Max Wellhead Rate bpm	Max Prop Conc lb/gal	Max Slurry Prop Conc lb/gal	Avg Treating Pressure psi	Avg Clean Rate bpm	Avg Slurry Rate bpm
1	21-Aug-13 09:25:38	55.1	0.00	0.00	3085	33.4	29.8
2	21-Aug-13 09:28:48	64.2	0.44	0.45	4160	60.1	60.9
3	21-Aug-13 09:56:02	64.3	0.73	0.73	3842	62.5	64.2
4	21-Aug-13 10:14:25	64.3	0.78	0.81	3730	61.8	64.2

Stage Number	Stage Time	Max Wellhead Rate bpm	Max Prop Conc lb/gal	Max Slurry Prop Conc lb/gal	Avg Treating Pressure psi	Avg Clean Rate bpm	Avg Slurry Rate bpm
5	21-Aug-13 10:26:59	64.3	0.99	0.99	3758	61.3	64.2
6	21-Aug-13 10:30:12	64.3	0.12	0.00	3287	52.4	53.4
7	21-Aug-13 10:30:33	0.0	0.00	0.00	0	0.0	0.0

Stage Number	Stage Time	Avg Wellhead Rate bpm	Avg Slurry Prop Conc lb/gal	Avg Hydraulic Horsepower hp	Clean Volume gal	Slurry Volume gal	Wellhead Volume gal
1	21-Aug-13 09:25:38	29.8	0.00	2253	1647	1512	1461
2	21-Aug-13 09:28:48	60.9	0.24	6205	7992	8096	8096
3	21-Aug-13 09:56:02	64.2	0.51	6044	71537	73431	73431
4	21-Aug-13 10:14:25	64.2	0.73	5870	47703	49587	49587
5	21-Aug-13 10:26:59	64.2	0.92	5912	32339	33887	33887
6	21-Aug-13 10:30:12	53.4	0.00	4305	6789	6921	6921
7	21-Aug-13 10:30:33	0.0	0.00	0	0	0	0
Total					168007	173434	173383

Stage Number	Stage Time	Prop Mass 100*lb
1	21-Aug-13 09:25:38	0.00

Stage Number	Stage Time	Prop Mass 100*lb
2	21-Aug-13 09:28:48	19.36
3	21-Aug-13 09:56:02	367.81
4	21-Aug-13 10:14:25	352.02
5	21-Aug-13 10:26:59	300.07
6	21-Aug-13 10:30:12	0.00
7	21-Aug-13 10:30:33	0.00
Total		1039.27

3.0 PERFORMANCE HIGHLIGHTS

3.1 Job Summary

Start Time	21-Aug-13 09:13:48	
End Time	21-Aug-13 10:30:33	

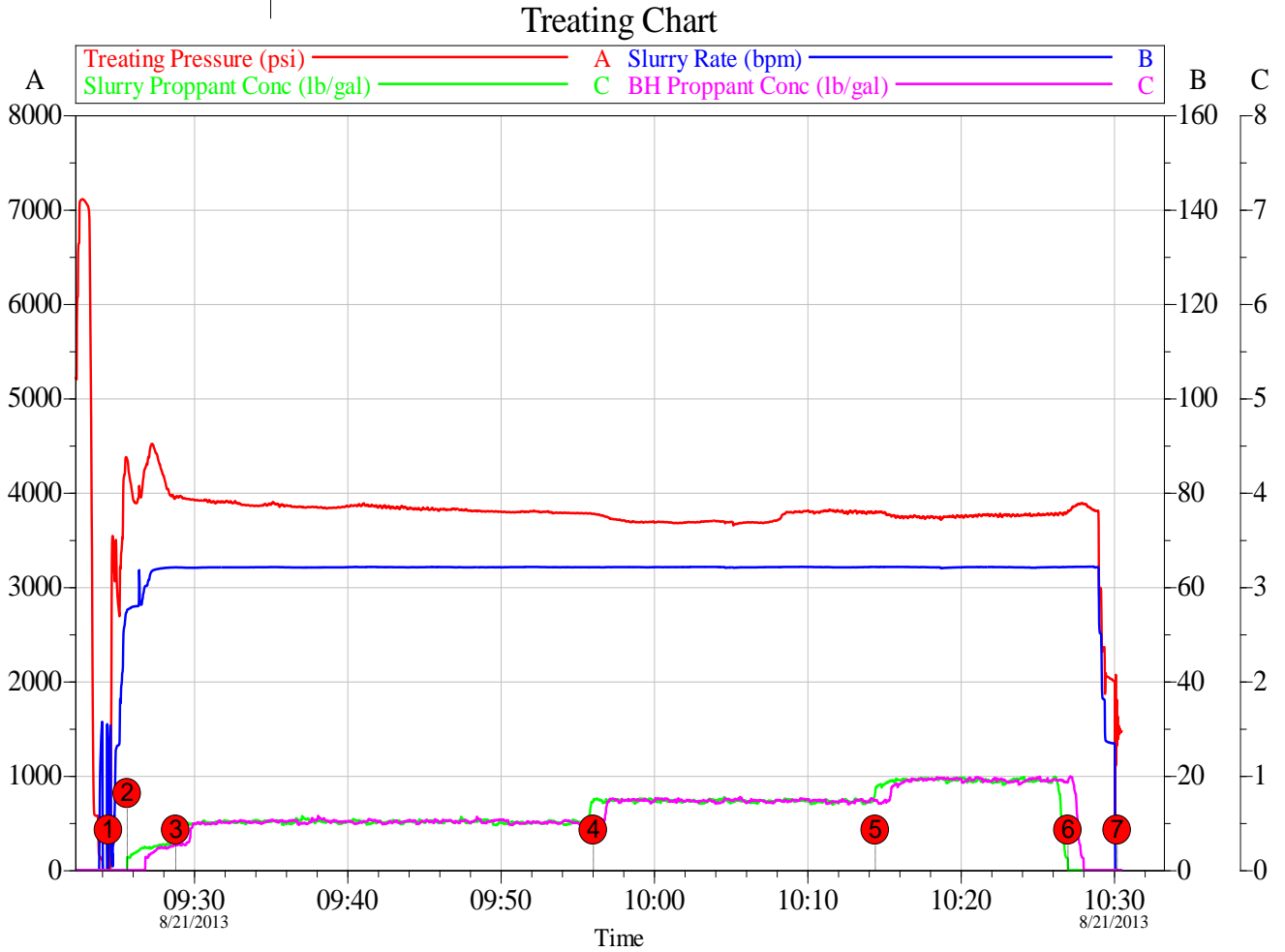
SKR-598-25-BV-04 Stage 3		
8/21/2013		
Engineering Notes		
Engineer on Location	Drew Mogck	
ISDP	1502	psi
Initial Pressure(Breakdown)	3541	psi
Max Pressure	4518	psi
Average Pressure	3809	psi
Max Rate	64.29	bpm
Average Rate	64.22	bpm
Proppant Design Volume	105,338	lbs
Proppant in Formation	105,500	lbs
FR-66 Used	39	gals
BE-7 Used	124	gals
SandWedge WF	109	lbs
SCW-4212 Used	25	gals
Clean Volume	4000	bbbls
Start Time	9:24 AM	HH:MM
End Time	10:30 AM	HH:MM
Job Notes:		
Pumped to completion		

3.2 Job Event Log

Stage Number	Event Number	Time	Description	Comment	Treating Pressure psi	Slurry Rate bpm	Braden Pressure psi	Job Slurry Vol gal
	1	21-Aug-13 09:13:48	Start Job	Starting Job				
1		09:24:26	Stage 1	Pad	-1	25.2	195	18
		09:24:27	Start Averaging	Start Avg Trt 1	0	24.1	195	35
	2	09:24:41	Break Formation	Break Formation=3541 psi, 2.66 bpm	3539	3.6	196	185
2		09:25:39	Stage 2	Proppant Laden Fluid	4352	55.1	196	1512
3		09:28:49	Stage 3	Proppant Laden Fluid	3957	64.2	192	9608
4		09:56:03	Stage 4	Proppant Laden Fluid	3776	64.2	164	83039
5		10:14:26	Stage 5	Proppant Laden Fluid	3802	64.3	150	132626
6		10:27:00	Stage 6	Flush	3807	64.3	141	166513
	3	10:30:05	ISIP	ISDP=1502 psi	1502	0.0	138	173434
7		10:30:13	Stage 7	Shut-In	1321	0.0	138	173434
		10:30:33	End Averaging	End Avg Trt 1	1465	0.0	138	173434
	4	10:30:36	End Job	Ending Job	1465	0.0	138	173434

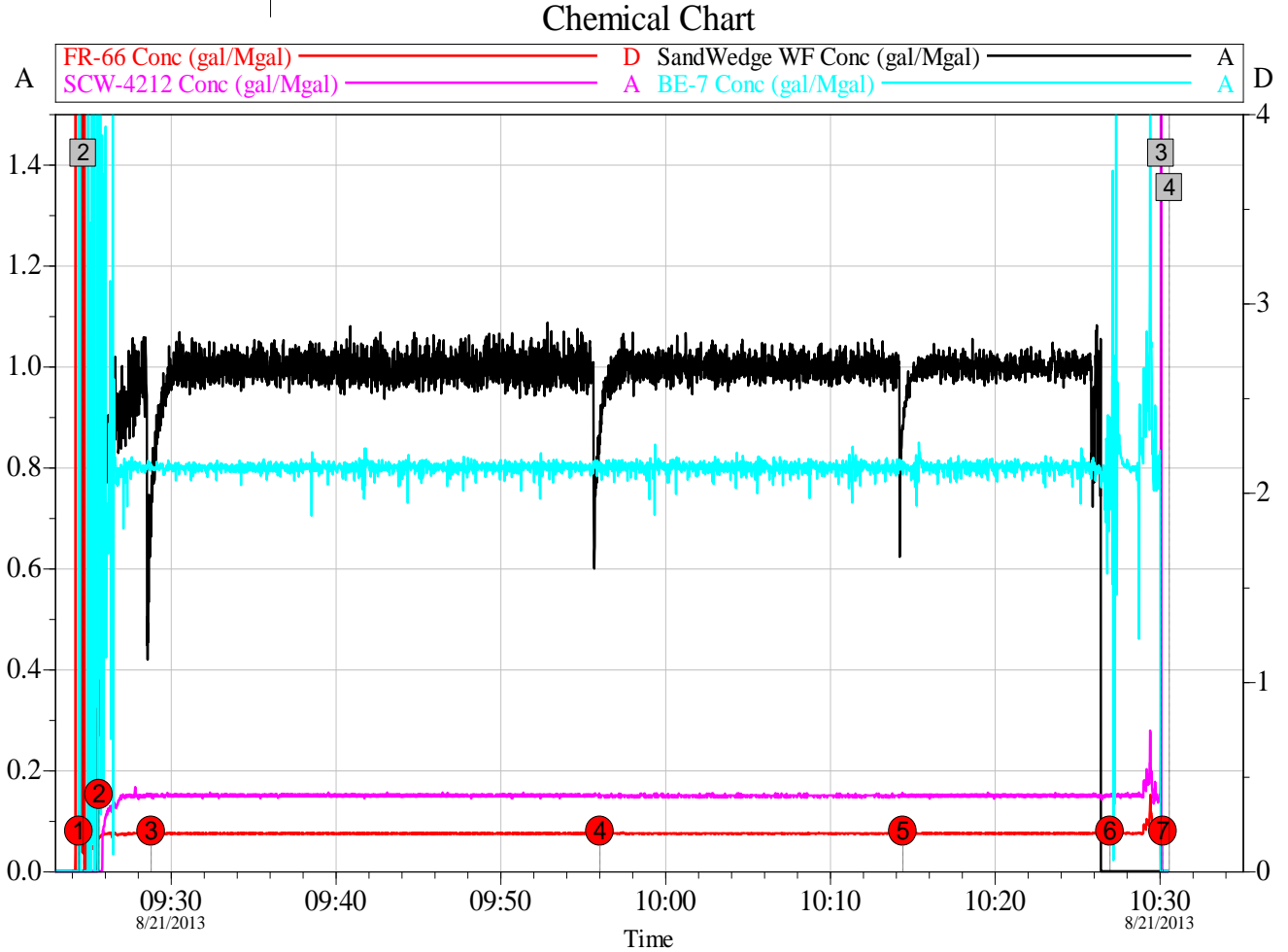
4.0 ATTACHMENTS

4.1 Treating Chart



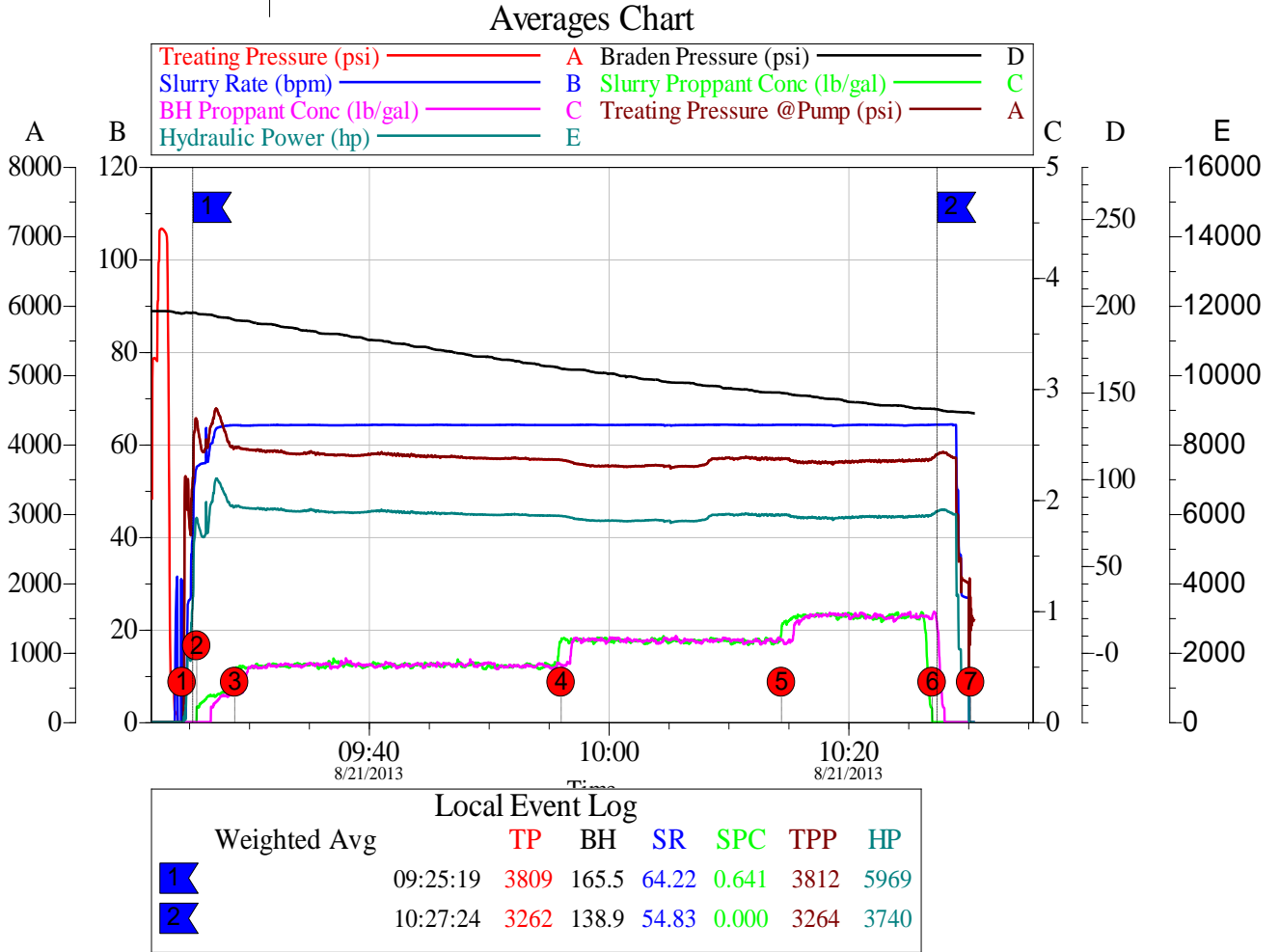
Customer: CHEVRON - MID-CONTINENT EBIZ	Job Date: 21-Aug-2013	Sales Order #: 900681547
Well Description: SKR 598-25-BV-04	UWI: 0504515275	

4.2 Chemical Chart



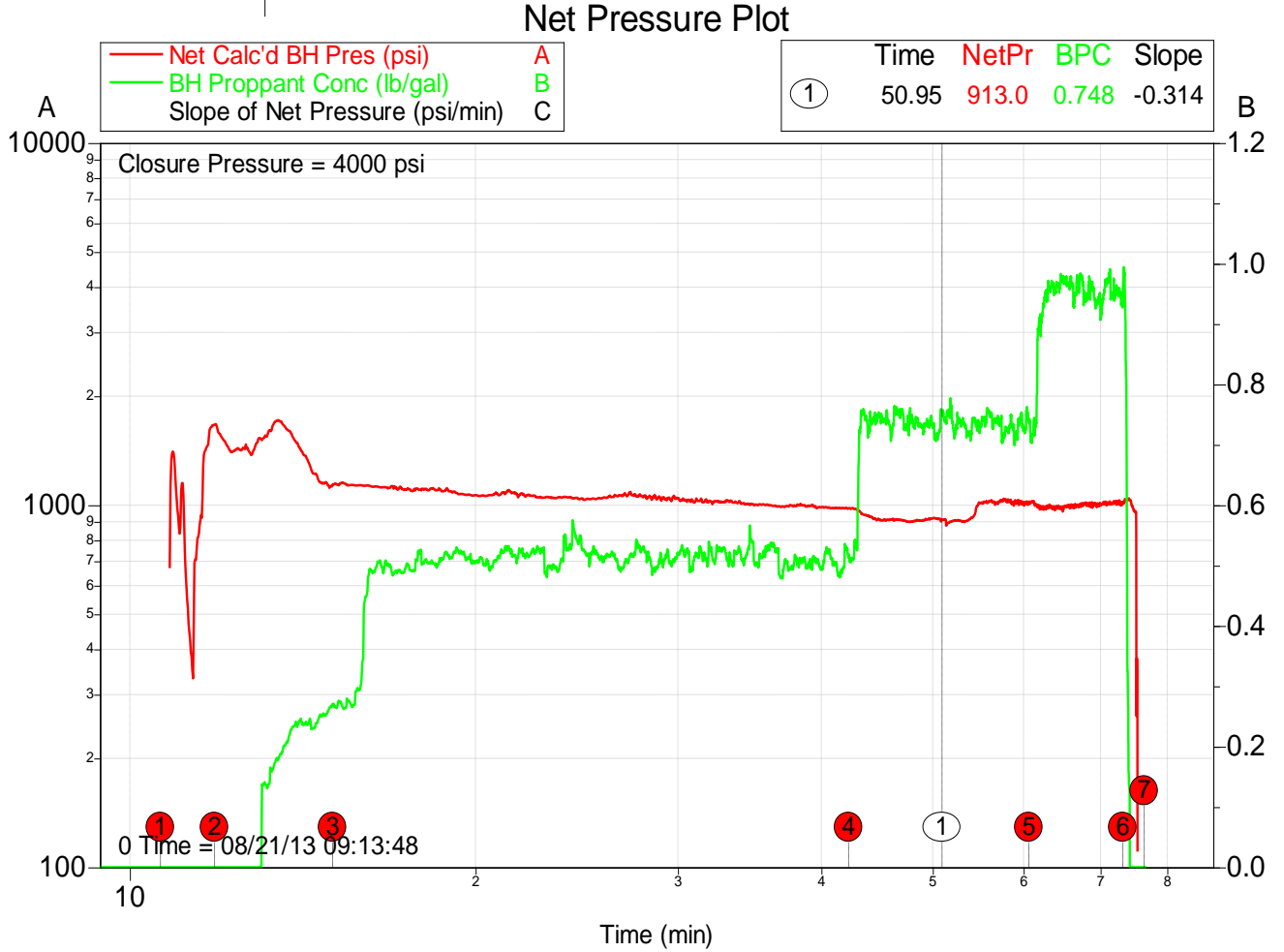
Customer: CHEVRON - MID-CONTINENT EBIZ	Job Date: 21-Aug-2013	Sales Order #: 900681547
Well Description: SKR 598-25-BV-04	UWI: 0504515275	

4.3 Averages Chart



Customer:	CHEVRON - MID-CONTINENT EBIZ	Job Date:	21-Aug-2013	Sales Order #:	900681547
Well Description:	SKR 598-25-BV-04	UWI:	0504515275		

4.4 Net Pressure Plot



Customer: CHEVRON - MID-CONTINENT EBIZ	Job Date: 21-Aug-2013	Sales Order #: 900681547
Well Description: SKR 598-25-BV-04	UWI: 0504515275	