

CHEVRON - MID-CONTINENT EBIZ
760 Horizon Dr
Grand Junction, CO 81506

SKR 598-25-BV-04

Interval 2
Garfield County, Colorado

Sales Order: 900659002

Post Job Report

For: Kieth Hejl
Date: Monday, August 12, 2013

Notice: Although the information contained in this report is based on sound engineering practices, the copyright owner(s) does (do) not accept any responsibility whatsoever, in negligence or otherwise, for any loss or damage arising from the possession or use of the report whether in terms of correctness or otherwise. The application, therefore, by the user of this report or any part thereof, is solely at the user's own risk.

HALLIBURTON

Table of Contents

1.0	Well Information	3
1.1	Customer Information	3
1.2	Pipe Information	4
1.3	Perforation Intervals	4
2.0	Actual Stage Summary	5
2.1	Stage Summary	5
3.0	Performance Highlights.....	8
3.1	Job Summary.....	8
3.2	Job Event Log	9
4.0	Attachments.....	10
4.1	Treating Chart	10
4.2	Chemical Chart	11
4.3	Averages Chart.....	12
4.4	Net Pressure Plot	13

1.0 WELL INFORMATION**1.1 Customer Information**

Customer	CHEVRON - MID-CONTINENT EBIZ
Sales Order	900659002
Well Name	SKR
Rig Type	None
Interval	2
Well Number	598-25-BV-04
Job Date	12-Aug-2013
County	Garfield
State	Colorado
UWI/API	0504515275
Country	United States of America
H2S Present	Unknown
CO2 Present	Unknown
Customer Representative	Kieth Hejl
Halliburton Representative	Swanson

1.2 Pipe Information

Equipment	Top MD ft	Bottom MD ft	OD in	ID in	Weight lb/ft
Surface Pipe	0.0	50.0	5.000	4.000	
Casing	0.0	4668.0	4.500	4.000	11.60

1.3 Perforation Intervals

Top MD ft	Bottom MD ft	Number of Shots	Perf Density spf	Perf Diameter in
4452.0	4618.0	27	0.2	0.340

2.0 ACTUAL STAGE SUMMARY

2.1 Stage Summary

Stage Number	Stage Time	Start Time	End Time	Time min	Pump Time min	Max Treat Pr psi	Max Slurry Rate bpm
1	12-Aug-13 15:31:56	15:30:58	12-Aug-13 15:31:56	0.98	0.95	5022	38.2
2	12-Aug-13 15:34:13	15:31:57	12-Aug-13 15:34:13	2.28	2.28	5150	64.4
3	12-Aug-13 15:52:37	15:34:14	12-Aug-13 15:52:37	18.40	18.40	4781	64.5
4	12-Aug-13 16:05:07	15:52:38	12-Aug-13 16:05:07	12.50	12.47	4931	64.4
5	12-Aug-13 16:13:54	16:05:08	12-Aug-13 16:13:54	8.78	8.78	6361	64.3
6	12-Aug-13 16:17:49	16:13:55	12-Aug-13 16:17:49	3.92	3.73	5713	54.8
7	12-Aug-13 16:17:55	16:17:50	12-Aug-13 16:17:55	0.10	0.00	0	0.0

Stage Number	Stage Time	Max Wellhead Rate bpm	Max Prop Conc lb/gal	Max Slurry Prop Conc lb/gal	Avg Treating Pressure psi	Avg Clean Rate bpm	Avg Slurry Rate bpm
1	12-Aug-13 15:31:56	38.2	0.29	0.29	1704	34.3	34.4
2	12-Aug-13 15:34:13	64.4	0.39	0.40	4638	56.4	57.1
3	12-Aug-13 15:52:37	64.5	0.63	0.63	4624	62.9	64.4
4	12-Aug-13 16:05:07	64.4	0.92	0.94	4879	62.1	64.3

Stage Number	Stage Time	Max Wellhead Rate bpm	Max Prop Conc lb/gal	Max Slurry Prop Conc lb/gal	Avg Treating Pressure psi	Avg Clean Rate bpm	Avg Slurry Rate bpm
5	12-Aug-13 16:13:54	64.3	1.15	1.15	5494	59.2	61.8
6	12-Aug-13 16:17:49	54.8	0.16	0.00	4736	45.0	45.0
7	12-Aug-13 16:17:55	0.0	0.00	0.00	0	0.0	0.0

Stage Number	Stage Time	Avg Wellhead Rate bpm	Avg Slurry Prop Conc lb/gal	Avg Hydraulic Horsepower hp	Clean Volume gal	Slurry Volume gal	Wellhead Volume gal
1	12-Aug-13 15:31:56	34.4	0.21	1438	1423	1427	1374
2	12-Aug-13 15:34:13	57.1	0.24	6485	5413	5472	5472
3	12-Aug-13 15:52:37	64.4	0.55	7303	48595	49806	49806
4	12-Aug-13 16:05:07	64.3	0.79	7691	32600	33769	33769
5	12-Aug-13 16:13:54	61.8	0.99	8326	21836	22816	22816
6	12-Aug-13 16:17:49	45.0	0.00	5223	7056	7056	7056
7	12-Aug-13 16:17:55	0.0	0.00	0	0	0	0
Total					116924	120346	120293

Stage Number	Stage Time	Prop Mass 100*lb
1	12-Aug-13 15:31:56	0.92

Stage Number	Stage Time	Prop Mass 100*lb
2	12-Aug-13 15:34:13	13.16
3	12-Aug-13 15:52:37	266.72
4	12-Aug-13 16:05:07	257.42
5	12-Aug-13 16:13:54	215.89
6	12-Aug-13 16:17:49	0.00
7	12-Aug-13 16:17:55	0.00
Total		754.11

3.0 PERFORMANCE HIGHLIGHTS

3.1 Job Summary

Start Time	12-Aug-13 15:15:42	
End Time	12-Aug-13 16:17:55	

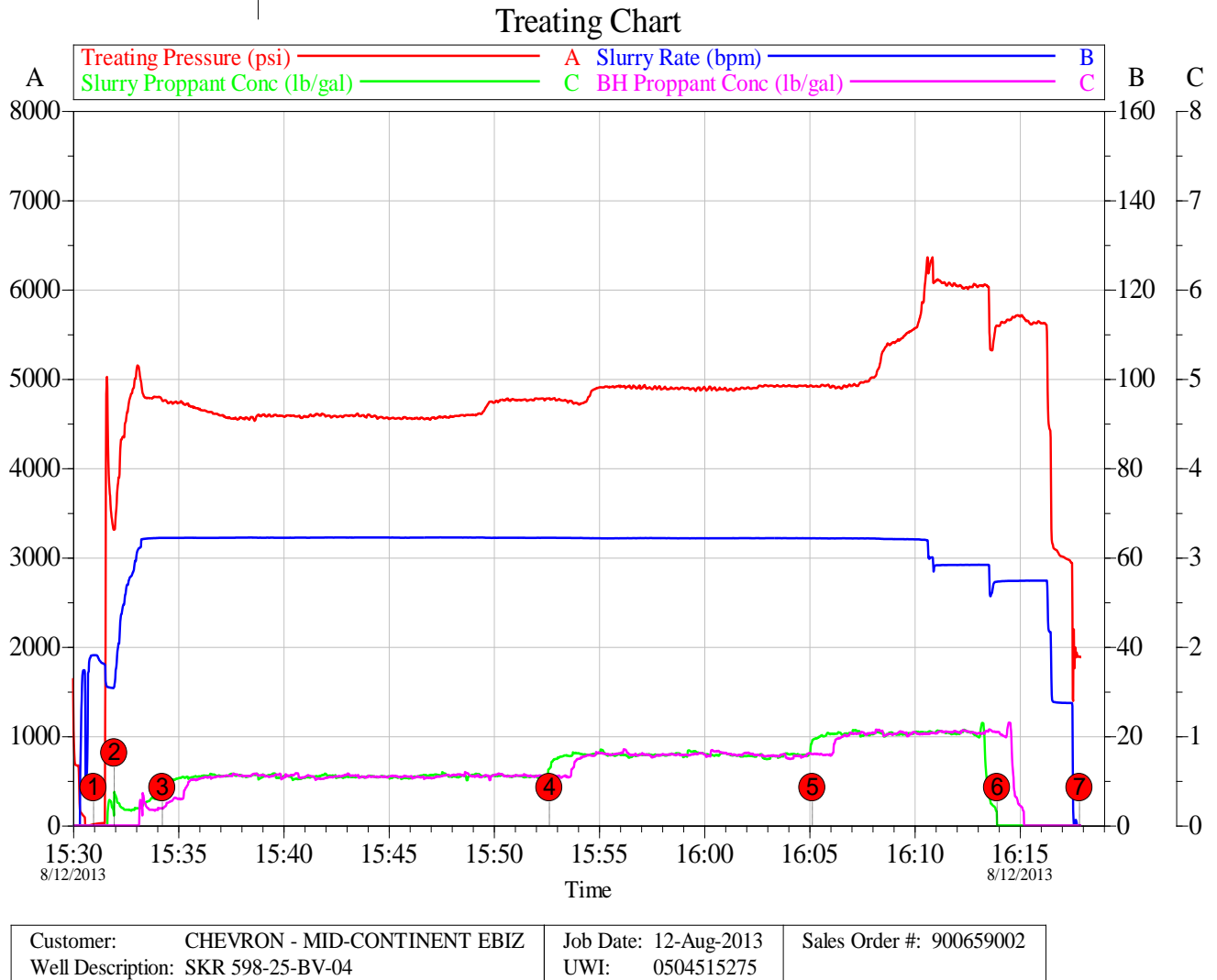
SKR-598-25-BV-04 Stage 2		
8/12/2013		
Engineering Notes		
Engineer on Location	Daniel Davis	
ISDP	1902	psi
Initial Pressure(Breakdown)	5021	psi
Max Pressure	6361	psi
Average Pressure	4883	psi
Max Rate	64.5	bpm
Average Rate	64.3	bpm
Proppant Design Volume	71,550	lbs
Proppant in Formation	72,000	lbs
FR-66 Used	26	gals
BE-7 Used	98	gals
SandWedge WF	74	lbs
SCW-4212 Used	18	gals
Clean Volume	2784	bbbls
Start Time	3:31 PM	HH:MM
End Time	4:17 PM	HH:MM
Job Notes:		
Job pumped to completion.		

3.2 Job Event Log

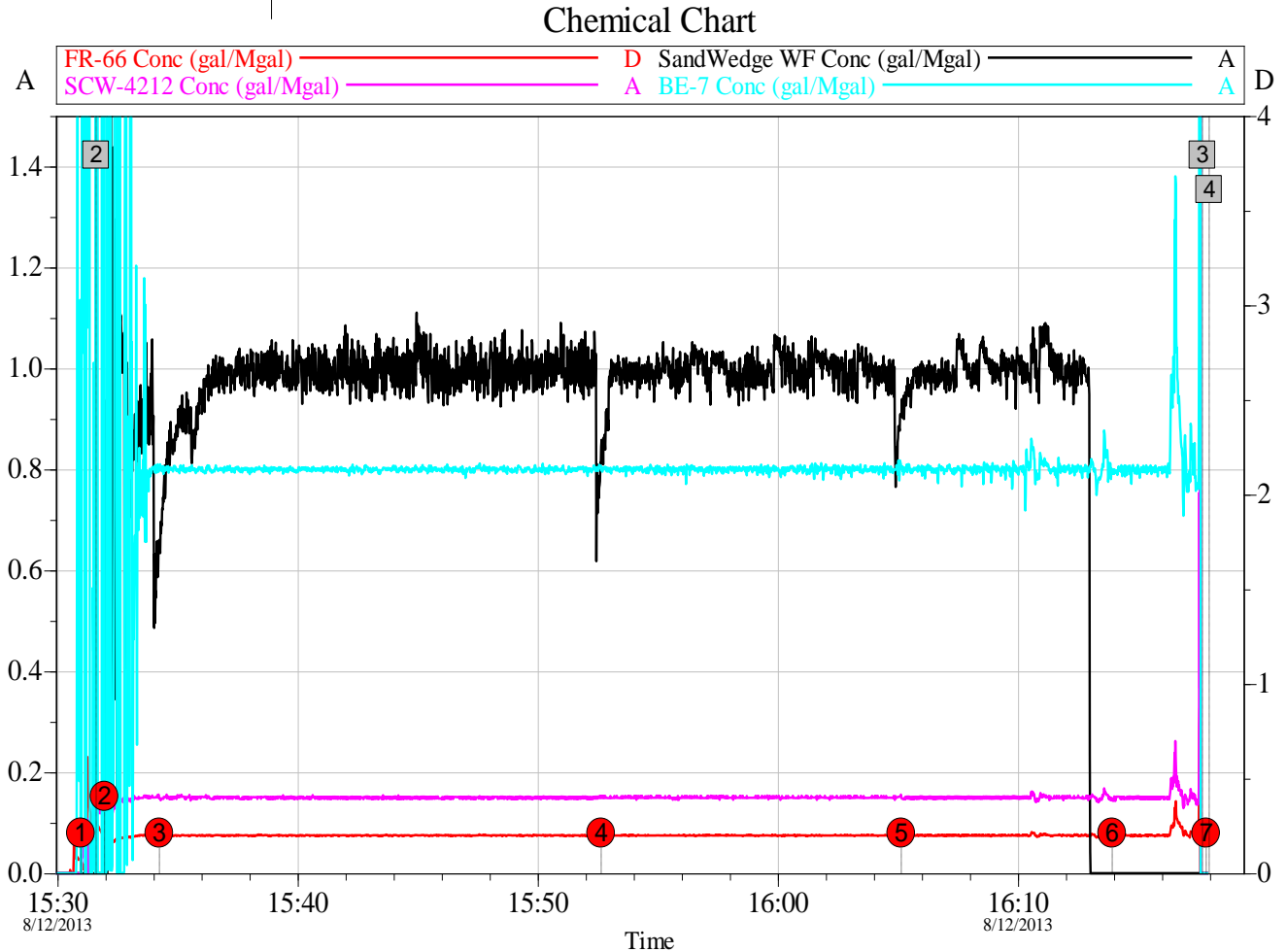
Stage Number	Event Number	Time	Description	Comment	Treating Pressure psi	Slurry Rate bpm	Braden Pressure psi	Job Slurry Vol gal
	1	12-Aug-13 15:15:42	Start Job	Starting Job				
1		15:30:58	Stage 1	Pad	14	38.1	214	27
		15:30:59	Start Averaging	Start Avg Trt 1	15	38.1	214	27
	2	15:31:36	Break Formation	Break Formation	5021	31.1	214	995
2		15:31:57	Stage 2	Proppant Laden Fluid	3312	31.0	213	1427
3		15:34:14	Stage 3	Proppant Laden Fluid	4754	64.4	212	6900
4		15:52:38	Stage 4	Proppant Laden Fluid	4777	64.4	206	56706
5		16:05:08	Stage 5	Proppant Laden Fluid	4920	64.3	202	90474
6		16:13:55	Stage 6	Flush	5596	54.6	199	113290
	3	16:17:41	ISIP	ISDP = 1902 psi	1902	1.3	198	120345
7		16:17:50	Stage 7	Shut-In	1891	0.0	198	120346
		16:17:55	End Averaging	End Avg Trt 1	1885	0.0	198	120346
	4	16:17:57	End Job	Ending Job	1885	0.0	198	120346

4.0 ATTACHMENTS

4.1 Treating Chart

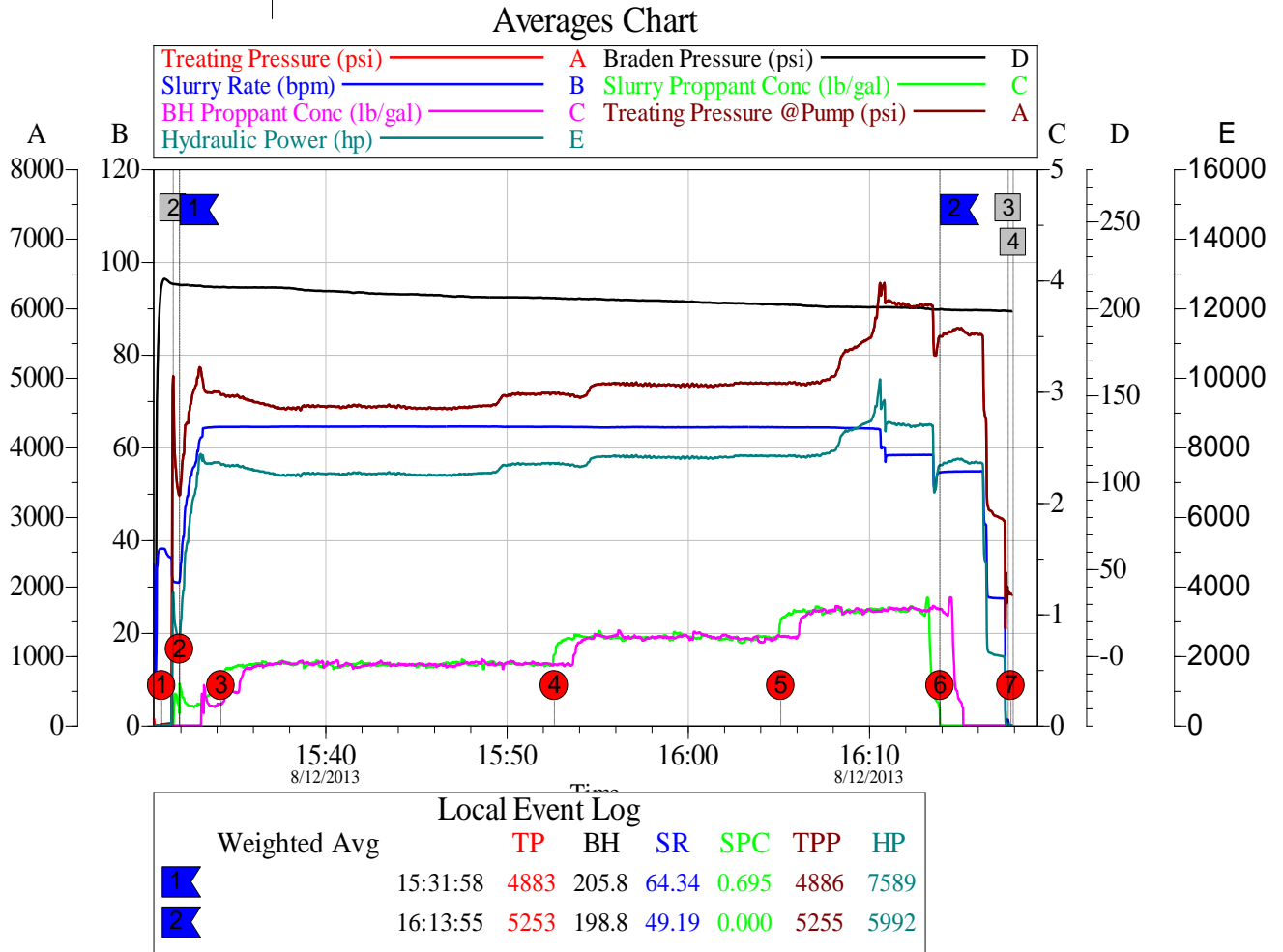


4.2 Chemical Chart



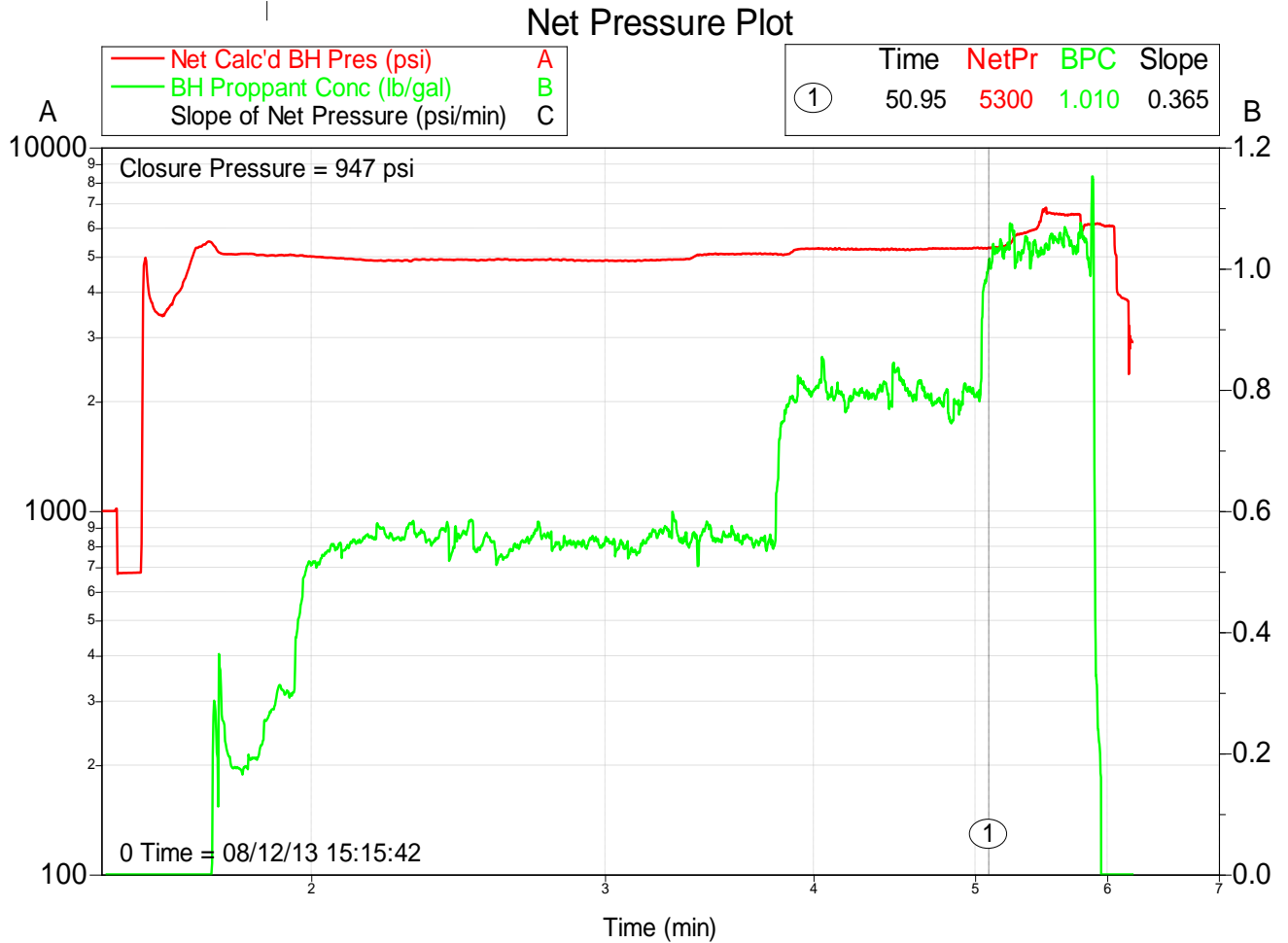
Customer: CHEVRON - MID-CONTINENT EBIZ	Job Date: 12-Aug-2013	Sales Order #: 900659002
Well Description: SKR 598-25-BV-04	UWI: 0504515275	

4.3 Averages Chart



Customer:	CHEVRON - MID-CONTINENT EBIZ	Job Date:	12-Aug-2013	Sales Order #:	900659002
Well Description:	SKR 598-25-BV-04	UWI:	0504515275		

4.4 Net Pressure Plot



Customer: CHEVRON - MID-CONTINENT EBIZ
Well Description: SKR 598-25-BV-04

Job Date: 12-Aug-2013
UWI: 0504515275

Sales Order #: 900659002