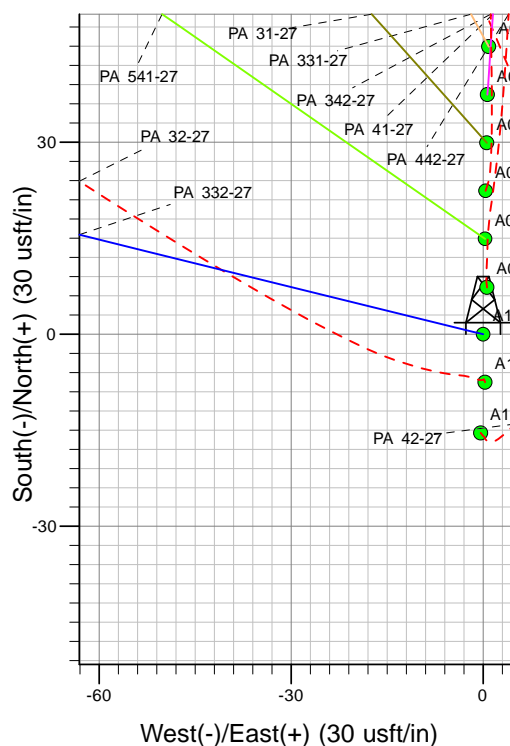
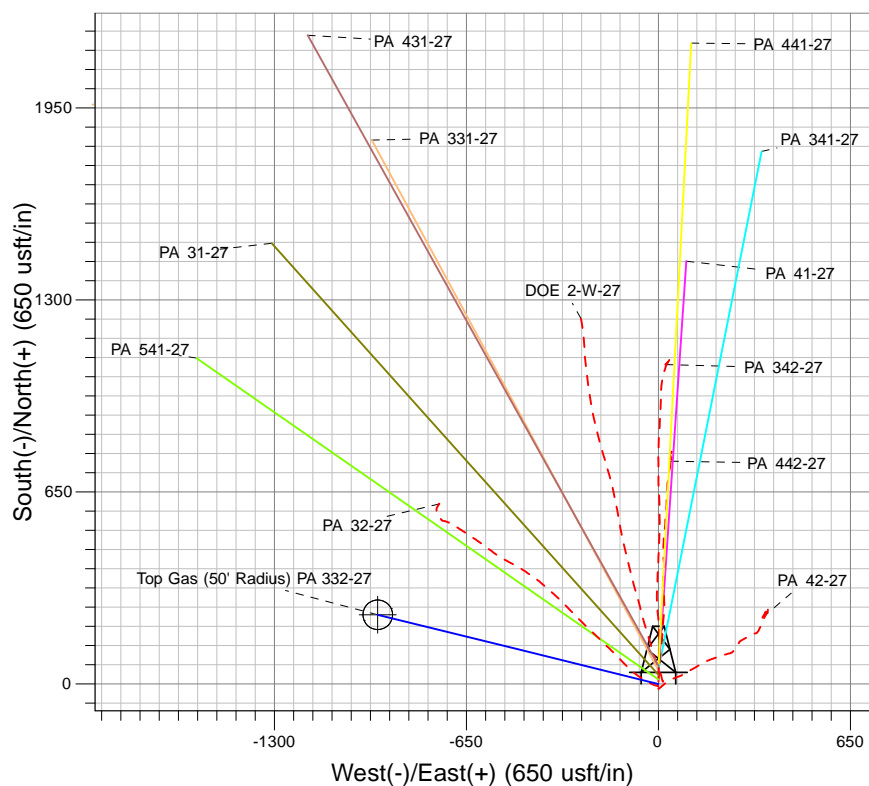
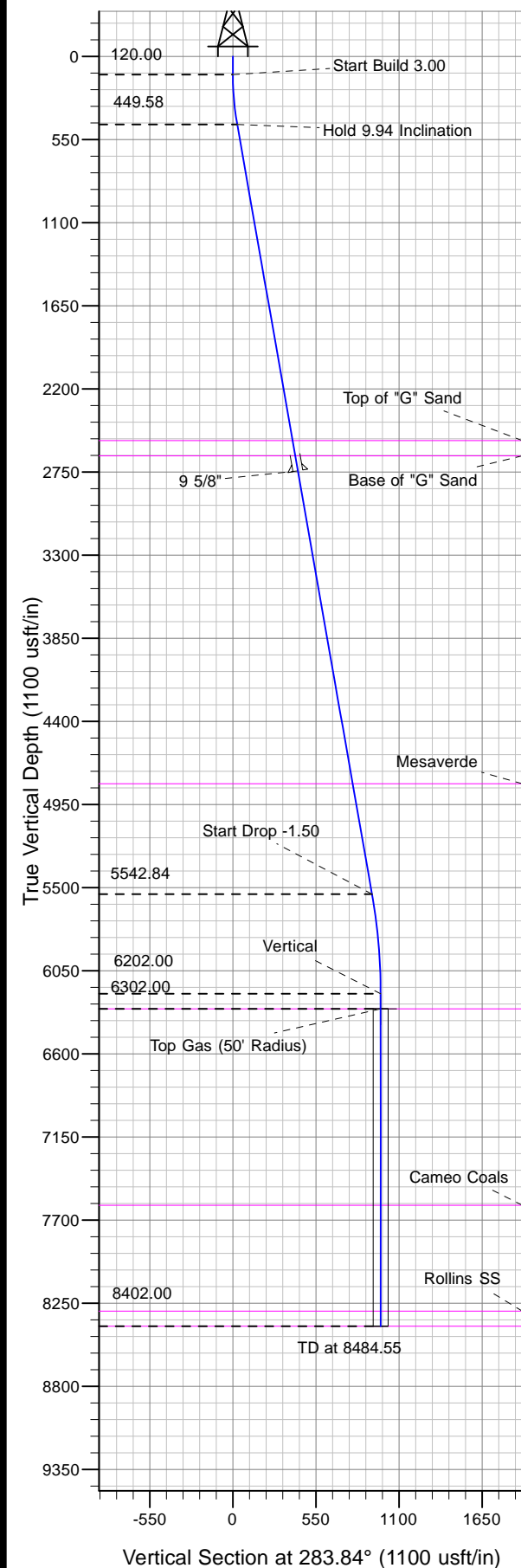




Well Name: PA 332-27
Surface Location: DOE 2-W-27 Pad
North American Datum 1983 , US State Plane 1983, Colorado Central Zone
Ground Elevation: 5856.00

+N/-S	+E/-W	Northing	Easting	Latitude	Longitude	Slot
0.00	0.00	1615042.90	2300863.40	39.49589	-107.97775	A10

KELLY BUSHING @ 5882.00usft (Nabors 577 (26' RKB) kjs)



Project: PA 27-06S-095W
Site: DOE 2-W-27 Pad
Well: PA 332-27
Design #1 13May13 kjs

Azimuths to True North
Magnetic North: 11.45°
Magnetic Field
Strength: 53051.5snT
Dip Angle: 65.99°
Date: 12/31/2004
Model: IGRF2000

ANNOTATIONS

TVD	MD	Inc	Azi	+N/-S	+E/-W	Vsect	Departure	Annotation
120.00	120.00	0.00	0.00	0.00	0.00	0.00	0.00	Start Build 3.00
449.58	451.24	9.94	283.84	6.86	-27.82	28.65	28.65	Hold 9.94 Inclination
5542.84	5622.07	9.94	283.84	220.34	-894.23	920.98	920.98	Start Drop -1.50
6202.00	6284.55	0.00	0.00	234.05	-949.87	978.28	978.28	Vertical
6302.00	6384.55	0.00	0.00	234.05	-949.87	978.28	978.28	Top Gas
8402.00	8484.55	0.00	0.00	234.05	-949.87	978.28	978.28	TD at 8484.55