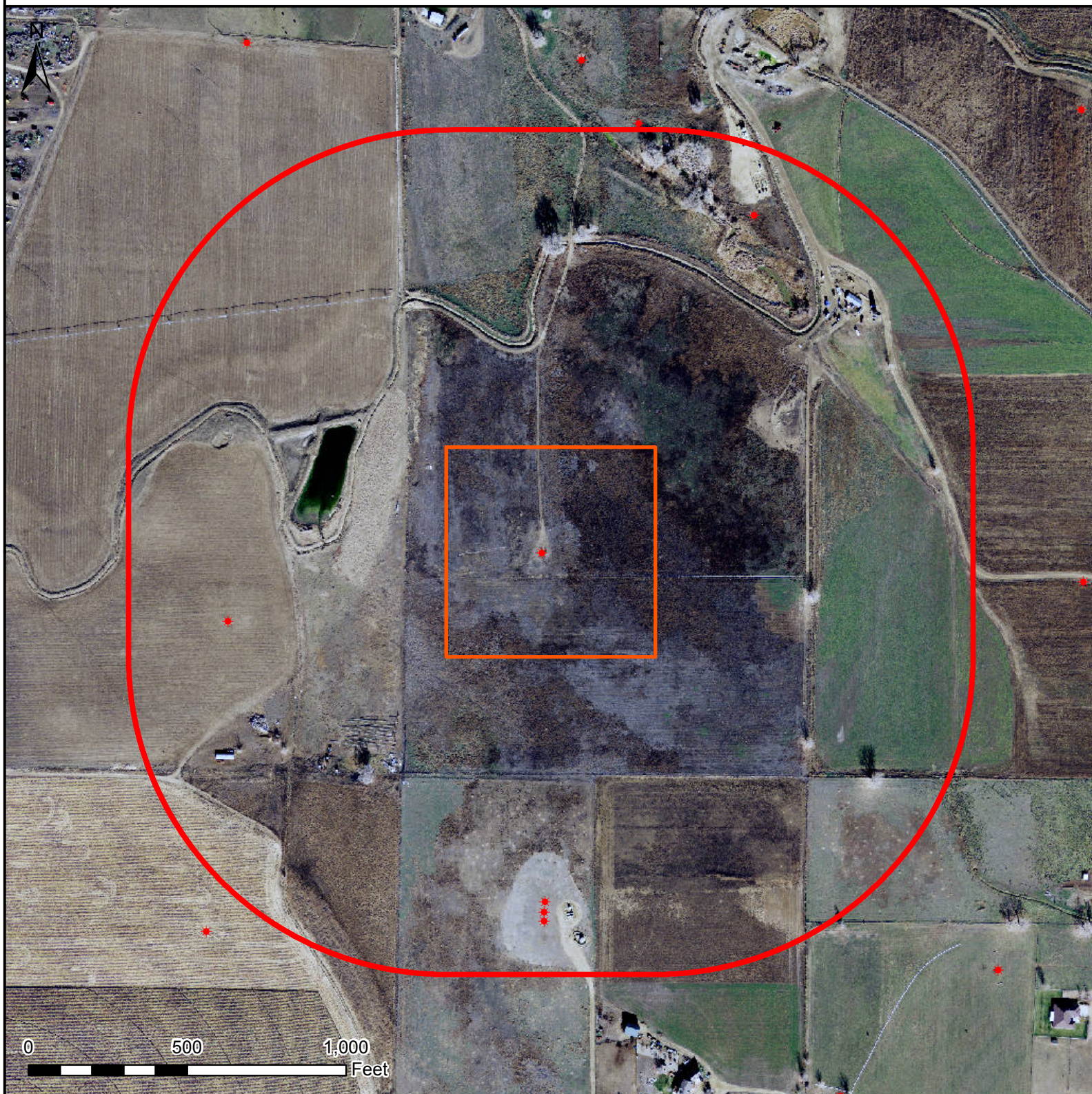





# HYDROLOGY MAP

## SCOTT 28C-32HZ



### Legend

-  Well pad (proposed)
-  1000' buffer
-  Existing oil/gas well (COGCC)

### Nearest Surface Water Feature

Ditch: 116' SE  
Ditch elevation: 4865'  
Well elevation: 4867'

All measurements are made from  
the reference well.



Date created: 10/10/2013  
Created by: APC Regulatory GIS  
Scale: 1:5,000  
Projection: NAD83 UTM 13N