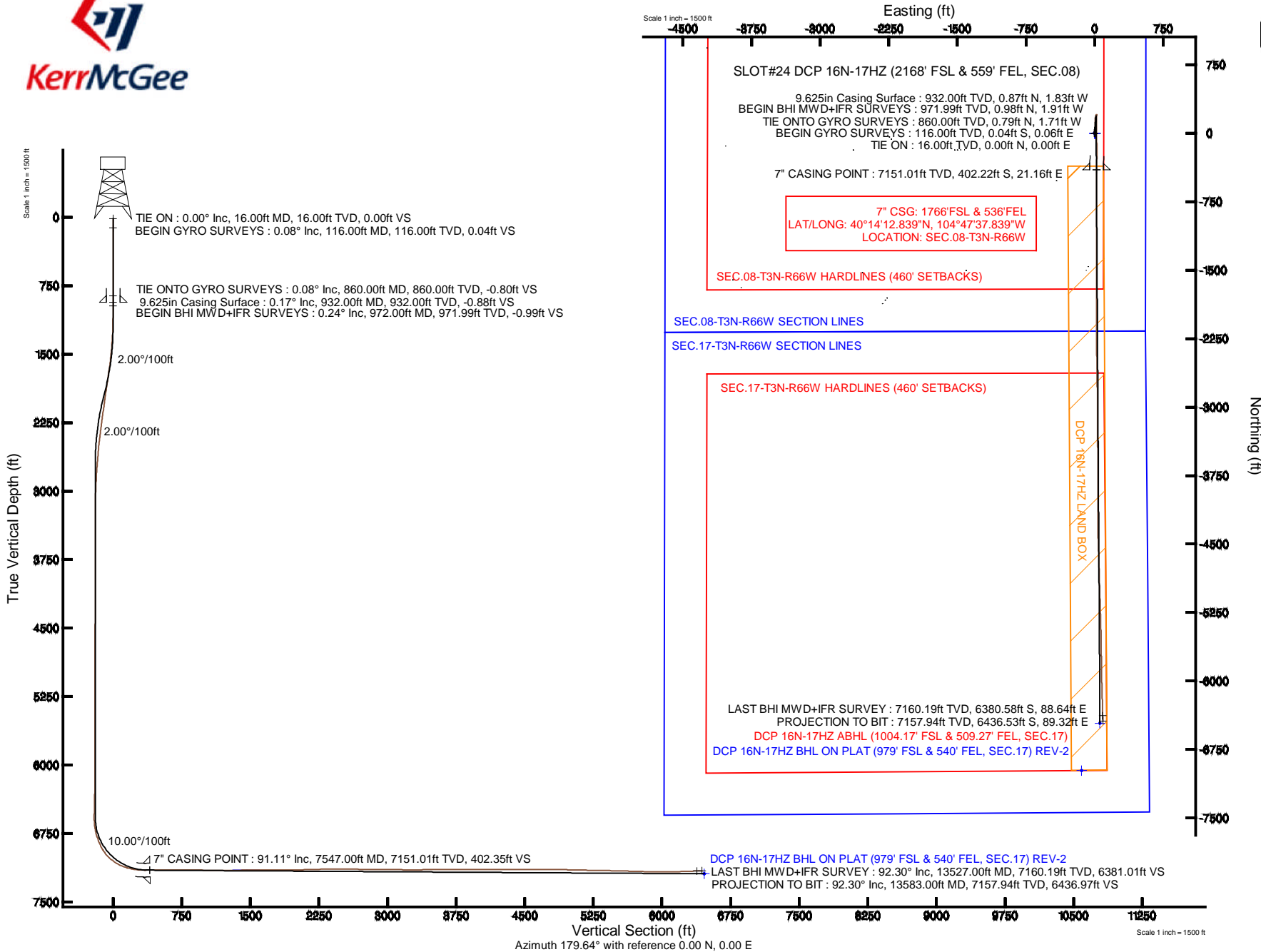


KERR-MCGEE OIL & GAS ONSHORE LP

Location: COLORADO Slot: SLOT#24 DCP 16N-17HZ (2168' FSL & 559' FEL, SEC.08)
 Field: WELD COUNTY (KERR MCGEE) Well: DCP 16N-17HZ
 Facility: SEC.08-T3N-R66W Wellbore: DCP 16N-17HZ PWB

Plot reference wellpath is DCP 16N-17HZ (REV-B.0) PWP

True vertical depths are referenced to XTREME 20 (16' RKB) (RKB)	Grid System: NAD83 / Lambert Colorado SP, Northern Zone (501), US feet
Measured depths are referenced to XTREME 20 (16' RKB) (RKB)	North Reference: True north
XTREME 20 (16' RKB) (RKB) to Mean Sea Level: 4871 feet	Scale: True distance
Mean Sea Level to Mud line (At Slot: SLOT#24 DCP 16N-17HZ (2168' FSL & 559' FEL, SEC.08)): 0 feet	Depths are in feet
Coordinates are in feet referenced to Slot	Created by: robale01 on 11/Oct/2013



TIE ON : 0.00° Inc, 16.00ft MD, 16.00ft TVD, 0.00ft VS
 BEGIN GYRO SURVEYS : 0.08° Inc, 116.00ft MD, 116.00ft TVD, 0.04ft VS

TIE ONTO GYRO SURVEYS : 0.08° Inc, 860.00ft MD, 860.00ft TVD, -0.80ft VS
 9.625in Casing Surface : 0.17° Inc, 932.00ft MD, 932.00ft TVD, -0.88ft VS
 BEGIN BHI MWD+IFR SURVEYS : 0.24° Inc, 972.00ft MD, 971.99ft TVD, -0.99ft VS

2.00°/100ft
 2.00°/100ft

10.00°/100ft
 7" CASING POINT : 91.11° Inc, 7547.00ft MD, 7151.01ft TVD, 402.35ft VS

SLOT#24 DCP 16N-17HZ (2168' FSL & 559' FEL, SEC.08)
 9.625in Casing Surface : 932.00ft TVD, 0.87ft N, 1.83ft W
 BEGIN BHI MWD+IFR SURVEYS : 971.99ft TVD, 0.98ft N, 1.91ft W
 TIE ONTO GYRO SURVEYS : 860.00ft TVD, 0.79ft N, 1.71ft W
 BEGIN GYRO SURVEYS : 116.00ft TVD, 0.04ft S, 0.06ft E
 TIE ON : 16.00ft TVD, 0.00ft N, 0.00ft E

7" CSG: 1766' FSL & 536' FEL
 LAT/LONG: 40°14'12.839"N, 104°47'37.839"W
 LOCATION: SEC.08-T3N-R66W

SEC.08-T3N-R66W HARDLINES (460' SETBACKS)

SEC.08-T3N-R66W SECTION LINES
 SEC.17-T3N-R66W SECTION LINES

SEC.17-T3N-R66W HARDLINES (460' SETBACKS)

DCP 16N-17HZ LAND BOX

LAST BHI MWD+IFR SURVEY : 7160.19ft TVD, 6380.58ft S, 88.64ft E
 PROJECTION TO BIT : 7157.94ft TVD, 6436.53ft S, 89.32ft E
 DCP 16N-17HZ ABHL (1004.17' FSL & 509.27' FEL, SEC.17)
 DCP 16N-17HZ BHL ON PLAT (979' FSL & 540' FEL, SEC.17) REV-2

DCP 16N-17HZ BHL ON PLAT (979' FSL & 540' FEL, SEC.17) REV-2
 LAST BHI MWD+IFR SURVEY : 92.30° Inc, 13527.00ft MD, 7160.19ft TVD, 6381.01ft VS
 PROJECTION TO BIT : 92.30° Inc, 13583.00ft MD, 7157.94ft TVD, 6436.97ft VS

REFERENCE WELLPATH IDENTIFICATION

Operator	KERR-MCGEE OIL & GAS ONSHORE LP	Slot	SLOT#24 DCP 16N-17HZ (2168' FSL & 559' FEL, SEC.08)
Area	COLORADO	Well	DCP 16N-17HZ
Field	WELD COUNTY (KERR MCGEE)	Wellbore	DCP 16N-17HZ AWP
Facility	SEC.08-T3N-R66W		

REPORT SETUP INFORMATION

Projection System	NAD83 / Lambert Colorado SP, Northern Zone (501), US feet	Software System	WellArchitect® 4.0.0
North Reference	True	User	Robiale01
Scale	0.999957	Report Generated	11/Oct/2013 at 11:11
Convergence at slot	n/a	Database/Source file	WA_ANADARKO/DCP_16N-17HZ_AWP.xml

WELLPATH LOCATION

	Local coordinates		Grid coordinates		Geographic coordinates	
	North[ft]	East[ft]	Easting[US ft]	Northing[US ft]	Latitude	Longitude
Slot Location	194.54	1471.32	3197118.41	1330331.47	40°14'16.814"N	104°47'38.112"W
Facility Reference Pt			3195648.74	1330125.32	40°14'14.892"N	104°47'57.084"W
Field Reference Pt			3197771.84	1268891.29	40°04'09.600"N	104°47'36.000"W

WELLPATH DATUM

Calculation method	Minimum curvature	XTREME 20 (16' RKB) (RKB) to Facility Vertical Datum	4871.00ft
Horizontal Reference Pt	Slot	XTREME 20 (16' RKB) (RKB) to Mean Sea Level	4871.00ft
Vertical Reference Pt	XTREME 20 (16' RKB) (RKB)	XTREME 20 (16' RKB) (RKB) to Mud Line at Slot (SLOT#24 DCP 16N-17HZ (2168' FSL & 559' FEL, SEC.08))	4871.00ft
MD Reference Pt	XTREME 20 (16' RKB) (RKB)	Section Origin	N 0.00, E 0.00 ft
Field Vertical Reference	Mean Sea Level	Section Azimuth	179.64°



Actual Wellpath Report

DCP 16N-17HZ AWP

Page 2 of 8



REFERENCE WELLPATH IDENTIFICATION

Operator	KERR-MCGEE OIL & GAS ONSHORE LP	Slot	SLOT#24 DCP 16N-17HZ (2168' FSL & 559' FEL, SEC.08)
Area	COLORADO	Well	DCP 16N-17HZ
Field	WELD COUNTY (KERR MCGEE)	Wellbore	DCP 16N-17HZ AWB
Facility	SEC.08-T3N-R66W		

WELLPATH DATA (170 stations) † = interpolated/extrapolated station

MD [ft]	Inclination [°]	Azimuth [°]	TVD [ft]	Vert Sect [ft]	North [ft]	East [ft]	Latitude	Longitude	DLS [°/100ft]	Comments
0.00†	0.000	127.760	0.00	0.00	0.00	0.00	40°14'16.814"N	104°47'38.112"W	0.00	
16.00	0.000	127.760	16.00	0.00	0.00	0.00	40°14'16.814"N	104°47'38.112"W	0.00	TIE ON
116.00	0.080	127.760	116.00	0.04	-0.04	0.06	40°14'16.814"N	104°47'38.111"W	0.08	BEGIN GYRO SURVEYS
216.00	0.090	148.240	216.00	0.15	-0.15	0.15	40°14'16.812"N	104°47'38.110"W	0.03	
316.00	0.190	301.020	316.00	0.13	-0.13	0.05	40°14'16.813"N	104°47'38.111"W	0.27	
416.00	0.230	257.440	416.00	0.09	-0.09	-0.29	40°14'16.813"N	104°47'38.116"W	0.16	
516.00	0.280	330.160	516.00	-0.08	0.08	-0.60	40°14'16.815"N	104°47'38.120"W	0.31	
616.00	0.250	267.300	616.00	-0.28	0.28	-0.94	40°14'16.817"N	104°47'38.124"W	0.28	
716.00	0.330	340.700	716.00	-0.55	0.54	-1.26	40°14'16.819"N	104°47'38.128"W	0.35	
816.00	0.260	265.960	816.00	-0.81	0.80	-1.58	40°14'16.822"N	104°47'38.132"W	0.36	
860.00	0.080	267.600	860.00	-0.80	0.79	-1.71	40°14'16.822"N	104°47'38.134"W	0.41	TIE ONTO GYRO SURVEYS
972.00	0.240	327.750	971.99	-0.99	0.98	-1.91	40°14'16.824"N	104°47'38.137"W	0.19	BEGIN BHI MWD+IFR SURVEYS
1063.00	0.150	251.070	1062.99	-1.12	1.10	-2.13	40°14'16.825"N	104°47'38.139"W	0.28	
1155.00	1.110	352.390	1154.99	-1.96	1.95	-2.36	40°14'16.833"N	104°47'38.142"W	1.25	
1247.00	2.330	14.910	1246.95	-4.65	4.64	-2.00	40°14'16.860"N	104°47'38.138"W	1.49	
1338.00	3.340	5.790	1337.83	-9.07	9.06	-1.25	40°14'16.904"N	104°47'38.128"W	1.21	
1433.00	5.120	9.910	1432.57	-16.00	15.99	-0.24	40°14'16.972"N	104°47'38.115"W	1.90	
1524.00	6.600	6.610	1523.09	-25.18	25.19	1.06	40°14'17.063"N	104°47'38.098"W	1.67	
1615.00	7.170	5.090	1613.44	-36.03	36.04	2.16	40°14'17.170"N	104°47'38.084"W	0.66	
1707.00	7.720	3.710	1704.66	-47.91	47.93	3.07	40°14'17.288"N	104°47'38.072"W	0.63	
1799.00	8.990	7.400	1795.68	-61.19	61.22	4.40	40°14'17.419"N	104°47'38.055"W	1.50	
1890.00	8.500	5.250	1885.63	-74.93	74.97	5.93	40°14'17.555"N	104°47'38.036"W	0.65	
1982.00	7.740	4.480	1976.70	-87.87	87.92	7.04	40°14'17.683"N	104°47'38.021"W	0.83	
2074.00	8.000	0.240	2067.84	-100.44	100.49	7.55	40°14'17.807"N	104°47'38.015"W	0.69	
2165.00	7.480	357.490	2158.01	-112.70	112.74	7.31	40°14'17.928"N	104°47'38.018"W	0.70	
2257.00	8.160	0.940	2249.15	-125.21	125.26	7.16	40°14'18.052"N	104°47'38.020"W	0.90	
2348.00	7.210	4.680	2339.33	-137.35	137.41	7.73	40°14'18.172"N	104°47'38.012"W	1.18	
2439.00	6.450	355.150	2429.69	-148.14	148.19	7.76	40°14'18.278"N	104°47'38.012"W	1.50	
2531.00	5.500	8.850	2521.20	-157.64	157.70	8.01	40°14'18.372"N	104°47'38.009"W	1.86	
2622.00	4.950	7.280	2611.82	-165.84	165.90	9.17	40°14'18.453"N	104°47'37.994"W	0.62	
2714.00	5.010	5.870	2703.47	-173.77	173.83	10.09	40°14'18.532"N	104°47'37.982"W	0.15	
2805.00	3.570	12.710	2794.21	-180.48	180.55	11.12	40°14'18.598"N	104°47'37.969"W	1.68	
2897.00	3.570	12.340	2886.03	-186.06	186.14	12.36	40°14'18.653"N	104°47'37.953"W	0.03	
2988.00	1.890	12.170	2976.93	-190.29	190.38	13.28	40°14'18.695"N	104°47'37.941"W	1.85	
3080.00	0.540	65.280	3068.91	-191.95	192.04	14.00	40°14'18.712"N	104°47'37.932"W	1.77	
3171.00	0.430	51.120	3159.90	-192.34	192.44	14.65	40°14'18.716"N	104°47'37.923"W	0.18	
3256.00	0.460	56.320	3244.90	-192.72	192.82	15.18	40°14'18.719"N	104°47'37.916"W	0.06	
3341.00	0.580	41.250	3329.90	-193.23	193.34	15.75	40°14'18.725"N	104°47'37.909"W	0.21	
3426.00	0.300	88.500	3414.90	-193.56	193.67	16.26	40°14'18.728"N	104°47'37.902"W	0.51	
3511.00	0.660	60.300	3499.89	-193.80	193.91	16.90	40°14'18.730"N	104°47'37.894"W	0.49	
3597.00	1.260	69.160	3585.88	-194.38	194.50	18.22	40°14'18.736"N	104°47'37.877"W	0.72	
3682.00	0.480	73.410	3670.87	-194.80	194.93	19.43	40°14'18.740"N	104°47'37.861"W	0.92	
3767.00	0.510	144.970	3755.87	-194.59	194.72	19.99	40°14'18.738"N	104°47'37.854"W	0.68	
3852.00	0.450	96.000	3840.86	-194.24	194.38	20.54	40°14'18.735"N	104°47'37.847"W	0.47	
3937.00	0.570	321.130	3925.86	-194.54	194.67	20.61	40°14'18.738"N	104°47'37.846"W	1.11	

Actual Wellpath Report

DCP 16N-17HZ AWP

Page 3 of 8

REFERENCE WELLPATH IDENTIFICATION

Operator	KERR-MCGEE OIL & GAS ONSHORE LP	Slot	SLOT#24 DCP 16N-17HZ (2168' FSL & 559' FEL, SEC.08)
Area	COLORADO	Well	DCP 16N-17HZ
Field	WELD COUNTY (KERR MCGEE)	Wellbore	DCP 16N-17HZ AWP
Facility	SEC.08-T3N-R66W		

WELLPATH DATA (170 stations)

MD [ft]	Inclination [°]	Azimuth [°]	TVD [ft]	Vert Sect [ft]	North [ft]	East [ft]	Latitude	Longitude	DLS [°/100ft]	Comments
4023.00	0.530	302.860	4011.86	-195.09	195.22	20.00	40°14'18.743"N	104°47'37.854"W	0.21	
4108.00	0.090	163.630	4096.86	-195.24	195.37	19.69	40°14'18.745"N	104°47'37.858"W	0.71	
4193.00	0.770	149.840	4181.85	-194.68	194.81	20.00	40°14'18.739"N	104°47'37.854"W	0.80	
4278.00	0.370	347.290	4266.85	-194.45	194.59	20.23	40°14'18.737"N	104°47'37.851"W	1.33	
4363.00	0.440	356.050	4351.85	-195.05	195.18	20.14	40°14'18.743"N	104°47'37.852"W	0.11	
4448.00	0.630	355.520	4436.85	-195.84	195.97	20.08	40°14'18.751"N	104°47'37.853"W	0.22	
4534.00	0.440	19.170	4522.84	-196.62	196.75	20.16	40°14'18.758"N	104°47'37.852"W	0.33	
4619.00	0.330	47.480	4607.84	-197.09	197.23	20.44	40°14'18.763"N	104°47'37.848"W	0.25	
4704.00	0.290	26.140	4692.84	-197.45	197.59	20.72	40°14'18.767"N	104°47'37.845"W	0.14	
4789.00	0.770	19.390	4777.84	-198.18	198.32	21.00	40°14'18.774"N	104°47'37.841"W	0.57	
4874.00	0.150	272.740	4862.83	-198.72	198.86	21.08	40°14'18.779"N	104°47'37.840"W	0.97	
4959.00	0.170	106.360	4947.83	-198.69	198.83	21.09	40°14'18.779"N	104°47'37.840"W	0.37	
5044.00	0.150	105.880	5032.83	-198.63	198.77	21.32	40°14'18.778"N	104°47'37.837"W	0.02	
5129.00	0.230	100.580	5117.83	-198.56	198.70	21.59	40°14'18.778"N	104°47'37.834"W	0.10	
5214.00	0.370	133.900	5202.83	-198.34	198.48	21.96	40°14'18.775"N	104°47'37.829"W	0.26	
5300.00	0.530	130.140	5288.83	-197.89	198.03	22.46	40°14'18.771"N	104°47'37.822"W	0.19	
5385.00	0.340	297.800	5373.83	-197.75	197.90	22.54	40°14'18.770"N	104°47'37.821"W	1.02	
5470.00	0.190	22.210	5458.83	-198.00	198.15	22.37	40°14'18.772"N	104°47'37.824"W	0.44	
5555.00	0.510	69.620	5543.83	-198.26	198.41	22.78	40°14'18.775"N	104°47'37.818"W	0.48	
5640.00	0.270	225.850	5628.83	-198.25	198.40	22.99	40°14'18.775"N	104°47'37.816"W	0.90	
5725.00	0.460	216.470	5713.82	-197.84	197.99	22.64	40°14'18.770"N	104°47'37.820"W	0.23	
5810.00	0.430	218.880	5798.82	-197.32	197.46	22.24	40°14'18.765"N	104°47'37.825"W	0.04	
5895.00	0.240	252.800	5883.82	-197.02	197.16	21.87	40°14'18.762"N	104°47'37.830"W	0.31	
5980.00	0.340	295.140	5968.82	-197.08	197.22	21.47	40°14'18.763"N	104°47'37.835"W	0.27	
6065.00	0.490	341.960	6053.82	-197.53	197.67	21.13	40°14'18.767"N	104°47'37.840"W	0.42	
6150.00	0.640	351.540	6138.81	-198.35	198.49	20.95	40°14'18.775"N	104°47'37.842"W	0.21	
6235.00	0.830	4.700	6223.81	-199.43	199.57	20.93	40°14'18.786"N	104°47'37.842"W	0.30	
6321.00	1.200	2.200	6309.79	-200.95	201.09	21.01	40°14'18.801"N	104°47'37.841"W	0.43	
6406.00	1.340	3.410	6394.77	-202.83	202.97	21.11	40°14'18.820"N	104°47'37.840"W	0.17	
6491.00	1.510	13.360	6479.74	-204.91	205.05	21.43	40°14'18.840"N	104°47'37.836"W	0.35	
6576.00	0.740	356.490	6564.73	-206.55	206.69	21.65	40°14'18.856"N	104°47'37.833"W	0.98	
6619.00	2.280	178.980	6607.72	-205.97	206.11	21.65	40°14'18.851"N	104°47'37.833"W	7.02	
6661.00	5.490	180.010	6649.62	-203.13	203.27	21.66	40°14'18.823"N	104°47'37.833"W	7.64	
6704.00	9.520	180.780	6692.24	-197.51	197.65	21.61	40°14'18.767"N	104°47'37.833"W	9.37	
6746.00	13.250	180.160	6733.41	-189.22	189.36	21.55	40°14'18.685"N	104°47'37.834"W	8.89	
6789.00	16.620	181.580	6774.95	-178.15	178.28	21.37	40°14'18.576"N	104°47'37.836"W	7.88	
6832.00	19.240	182.420	6815.86	-164.92	165.06	20.90	40°14'18.445"N	104°47'37.842"W	6.12	
6874.00	22.560	182.550	6855.09	-149.96	150.09	20.25	40°14'18.297"N	104°47'37.851"W	7.91	
6916.00	26.750	180.720	6893.25	-132.45	132.58	19.77	40°14'18.124"N	104°47'37.857"W	10.14	
6959.00	32.540	180.050	6930.61	-111.20	111.32	19.64	40°14'17.914"N	104°47'37.859"W	13.49	
7002.00	37.290	179.940	6965.86	-86.59	86.72	19.65	40°14'17.671"N	104°47'37.859"W	11.05	
7045.00	43.150	180.320	6998.67	-58.84	58.96	19.58	40°14'17.397"N	104°47'37.860"W	13.64	
7087.00	48.770	180.380	7027.86	-28.66	28.79	19.39	40°14'17.098"N	104°47'37.862"W	13.38	
7130.00	55.220	179.700	7054.32	5.20	-5.08	19.38	40°14'16.764"N	104°47'37.862"W	15.05	
7172.00	58.710	177.430	7077.22	40.40	-40.27	20.27	40°14'16.416"N	104°47'37.851"W	9.46	

REFERENCE WELLPATH IDENTIFICATION			
Operator	KERR-MCGEE OIL & GAS ONSHORE LP	Slot	SLOT#24 DCP 16N-17HZ (2168' FSL & 559' FEL, SEC.08)
Area	COLORADO	Well	DCP 16N-17HZ
Field	WELD COUNTY (KERR MCGEE)	Wellbore	DCP 16N-17HZ AWP
Facility	SEC.08-T3N-R66W		

WELLPATH DATA (170 stations) † = interpolated/extrapolated station										
MD [ft]	Inclination [°]	Azimuth [°]	TVD [ft]	Vert Sect [ft]	North [ft]	East [ft]	Latitude	Longitude	DLS [°/100ft]	Comments
7215.00	64.550	177.670	7097.64	78.19	-78.05	21.89	40°14'16.043"N	104°47'37.830"W	13.59	
7257.00	69.500	176.270	7114.03	116.80	-116.65	23.94	40°14'15.661"N	104°47'37.803"W	12.18	
7300.00	74.380	177.600	7127.36	157.63	-157.46	26.12	40°14'15.258"N	104°47'37.775"W	11.72	
7342.00	78.500	179.320	7137.20	198.44	-198.27	27.21	40°14'14.855"N	104°47'37.761"W	10.59	
7385.00	83.240	183.250	7144.03	240.85	-240.69	26.25	40°14'14.436"N	104°47'37.774"W	14.24	
7427.00	84.200	183.540	7148.62	282.51	-282.37	23.78	40°14'14.024"N	104°47'37.805"W	2.39	
7470.00	88.640	181.260	7151.31	325.36	-325.23	21.98	40°14'13.600"N	104°47'37.829"W	11.60	
7491.00	90.000	180.690	7151.56	346.36	-346.22	21.62	40°14'13.393"N	104°47'37.833"W	7.02	
7547.00†	91.114	180.249	7151.01	402.35	-402.22	21.16	40°14'12.839"N	104°47'37.839"W	2.14	7" CASING POINT
7590.00	91.970	179.910	7149.85	445.33	-445.20	21.10	40°14'12.415"N	104°47'37.840"W	2.14	
7643.00	91.720	180.610	7148.15	498.30	-498.17	20.86	40°14'11.891"N	104°47'37.843"W	1.40	
7735.00	90.120	181.200	7146.67	590.26	-590.15	19.41	40°14'10.982"N	104°47'37.862"W	1.85	
7826.00	89.780	179.230	7146.75	681.25	-681.14	19.07	40°14'10.083"N	104°47'37.866"W	2.20	
7917.00	89.160	180.190	7147.59	772.24	-772.14	19.53	40°14'09.184"N	104°47'37.860"W	1.26	
8009.00	89.040	179.390	7149.04	864.23	-864.12	19.87	40°14'08.275"N	104°47'37.856"W	0.88	
8101.00	88.700	179.580	7150.85	956.21	-956.10	20.69	40°14'07.366"N	104°47'37.845"W	0.42	
8193.00	89.380	179.330	7152.39	1048.20	-1048.08	21.57	40°14'06.457"N	104°47'37.834"W	0.79	
8284.00	90.640	179.780	7152.38	1139.20	-1139.08	22.28	40°14'05.558"N	104°47'37.825"W	1.47	
8375.00	89.780	179.880	7152.04	1230.20	-1230.08	22.55	40°14'04.658"N	104°47'37.821"W	0.95	
8467.00	90.240	180.610	7152.03	1322.19	-1322.08	22.15	40°14'03.749"N	104°47'37.826"W	0.94	
8559.00	90.670	180.370	7151.30	1414.18	-1414.07	21.37	40°14'02.840"N	104°47'37.837"W	0.54	
8650.00	90.760	179.410	7150.16	1505.17	-1505.06	21.54	40°14'01.941"N	104°47'37.834"W	1.06	
8741.00	90.430	180.680	7149.22	1596.16	-1596.05	21.47	40°14'01.042"N	104°47'37.835"W	1.44	
8833.00	89.500	180.090	7149.27	1688.15	-1688.05	20.85	40°14'00.133"N	104°47'37.843"W	1.20	
8924.00	90.400	179.930	7149.35	1779.15	-1779.05	20.84	40°13'59.234"N	104°47'37.843"W	1.00	
9016.00	89.840	179.700	7149.16	1871.14	-1871.05	21.13	40°13'58.324"N	104°47'37.840"W	0.66	
9107.00	90.550	179.760	7148.85	1962.14	-1962.05	21.56	40°13'57.425"N	104°47'37.834"W	0.78	
9199.00	91.600	179.650	7147.12	2054.13	-2054.03	22.03	40°13'56.516"N	104°47'37.828"W	1.15	
9290.00	91.750	179.920	7144.46	2145.09	-2144.99	22.38	40°13'55.617"N	104°47'37.823"W	0.34	
9381.00	91.230	180.030	7142.10	2236.05	-2235.96	22.42	40°13'54.718"N	104°47'37.823"W	0.58	
9466.00	91.070	180.230	7140.39	2321.03	-2320.94	22.22	40°13'53.879"N	104°47'37.825"W	0.30	
9552.00	89.630	178.650	7139.86	2407.03	-2406.93	23.06	40°13'53.029"N	104°47'37.815"W	2.49	
9637.00	90.210	179.390	7139.98	2492.02	-2491.92	24.52	40°13'52.189"N	104°47'37.796"W	1.11	
9722.00	89.660	179.450	7140.08	2577.02	-2576.91	25.38	40°13'51.349"N	104°47'37.785"W	0.65	
9807.00	89.040	179.160	7141.04	2662.01	-2661.90	26.41	40°13'50.509"N	104°47'37.772"W	0.81	
9892.00	88.300	178.790	7143.02	2746.98	-2746.86	27.93	40°13'49.670"N	104°47'37.752"W	0.97	
9977.00	89.130	179.230	7144.92	2831.96	-2831.83	29.40	40°13'48.830"N	104°47'37.733"W	1.11	
10063.00	89.930	179.630	7145.63	2917.95	-2917.82	30.25	40°13'47.980"N	104°47'37.722"W	1.04	
10148.00	89.870	179.670	7145.78	3002.95	-3002.82	30.77	40°13'47.140"N	104°47'37.715"W	0.08	
10233.00	89.970	179.810	7145.90	3087.95	-3087.82	31.16	40°13'46.300"N	104°47'37.710"W	0.20	
10318.00	89.030	180.170	7146.64	3172.94	-3172.81	31.17	40°13'45.461"N	104°47'37.710"W	1.18	
10403.00	89.590	179.620	7147.66	3257.94	-3257.80	31.33	40°13'44.621"N	104°47'37.708"W	0.92	
10488.00	90.980	179.060	7147.24	3342.93	-3342.79	32.31	40°13'43.781"N	104°47'37.695"W	1.76	
10573.00	90.670	179.200	7146.01	3427.92	-3427.78	33.60	40°13'42.941"N	104°47'37.679"W	0.40	
10658.00	90.060	179.350	7145.47	3512.92	-3512.77	34.67	40°13'42.101"N	104°47'37.665"W	0.74	



Actual Wellpath Report

DCP 16N-17HZ AWP

Page 5 of 8



REFERENCE WELLPATH IDENTIFICATION

Operator	KERR-MCGEE OIL & GAS ONSHORE LP	Slot	SLOT#24 DCP 16N-17HZ (2168' FSL & 559' FEL, SEC.08)
Area	COLORADO	Well	DCP 16N-17HZ
Field	WELD COUNTY (KERR MCGEE)	Wellbore	DCP 16N-17HZ AWP
Facility	SEC.08-T3N-R66W		

WELLPATH DATA (170 stations)

MD [ft]	Inclination [°]	Azimuth [°]	TVD [ft]	Vert Sect [ft]	North [ft]	East [ft]	Latitude	Longitude	DLS [°/100ft]	Comments
10744.00	90.270	179.450	7145.23	3598.92	-3598.76	35.57	40°13'41.251"N	104°47'37.653"W	0.27	
10829.00	89.970	180.060	7145.05	3683.91	-3683.76	35.94	40°13'40.411"N	104°47'37.649"W	0.80	
10913.00	89.630	180.180	7145.34	3767.91	-3767.76	35.76	40°13'39.581"N	104°47'37.651"W	0.43	
10999.00	89.410	180.180	7146.06	3853.90	-3853.76	35.49	40°13'38.731"N	104°47'37.654"W	0.26	
11084.00	90.710	179.970	7145.97	3938.90	-3938.75	35.38	40°13'37.892"N	104°47'37.656"W	1.55	
11169.00	90.370	180.670	7145.17	4023.89	-4023.75	34.90	40°13'37.052"N	104°47'37.662"W	0.92	
11254.00	90.370	180.300	7144.62	4108.88	-4108.74	34.19	40°13'36.212"N	104°47'37.671"W	0.44	
11339.00	89.960	179.860	7144.38	4193.87	-4193.74	34.07	40°13'35.372"N	104°47'37.673"W	0.71	
11424.00	89.530	179.460	7144.76	4278.87	-4278.74	34.57	40°13'34.532"N	104°47'37.666"W	0.69	
11509.00	90.300	178.040	7144.88	4363.86	-4363.72	36.43	40°13'33.692"N	104°47'37.642"W	1.90	
11594.00	90.120	178.210	7144.57	4448.83	-4448.67	39.21	40°13'32.853"N	104°47'37.607"W	0.29	
11679.00	90.120	178.030	7144.39	4533.80	-4533.62	41.99	40°13'32.013"N	104°47'37.571"W	0.21	
11764.00	90.210	178.560	7144.15	4618.78	-4618.59	44.52	40°13'31.173"N	104°47'37.538"W	0.63	
11849.00	89.840	178.190	7144.11	4703.76	-4703.55	46.93	40°13'30.334"N	104°47'37.507"W	0.62	
11934.00	89.470	178.440	7144.62	4788.73	-4788.51	49.43	40°13'29.494"N	104°47'37.475"W	0.53	
12019.00	89.590	178.670	7145.32	4873.71	-4873.48	51.58	40°13'28.655"N	104°47'37.447"W	0.31	
12104.00	88.950	178.360	7146.40	4958.69	-4958.45	53.78	40°13'27.815"N	104°47'37.419"W	0.84	
12189.00	88.700	177.920	7148.15	5043.64	-5043.38	56.54	40°13'26.976"N	104°47'37.383"W	0.60	
12275.00	88.630	178.230	7150.15	5129.59	-5129.31	59.43	40°13'26.127"N	104°47'37.346"W	0.37	
12360.00	88.480	177.900	7152.29	5214.53	-5214.24	62.30	40°13'25.287"N	104°47'37.309"W	0.43	
12445.00	89.010	178.570	7154.15	5299.48	-5299.18	64.91	40°13'24.448"N	104°47'37.275"W	1.00	
12530.00	89.260	178.170	7155.44	5384.45	-5384.13	67.33	40°13'23.608"N	104°47'37.244"W	0.55	
12615.00	88.670	178.960	7156.97	5469.42	-5469.09	69.46	40°13'22.769"N	104°47'37.217"W	1.16	
12701.00	88.360	179.300	7159.20	5555.39	-5555.05	70.76	40°13'21.919"N	104°47'37.200"W	0.53	
12786.00	88.360	178.980	7161.63	5640.35	-5640.01	72.04	40°13'21.080"N	104°47'37.183"W	0.38	
12871.00	87.960	178.890	7164.36	5725.30	-5724.95	73.62	40°13'20.240"N	104°47'37.163"W	0.48	
12956.00	88.930	179.440	7166.67	5810.26	-5809.91	74.86	40°13'19.401"N	104°47'37.147"W	1.31	
13042.00	89.260	179.090	7168.03	5896.25	-5895.89	75.96	40°13'18.551"N	104°47'37.133"W	0.56	
13127.00	89.810	178.500	7168.72	5981.24	-5980.87	77.75	40°13'17.712"N	104°47'37.110"W	0.95	
13212.00	90.240	177.860	7168.68	6066.21	-6065.82	80.45	40°13'16.872"N	104°47'37.075"W	0.91	
13297.00	91.250	178.960	7167.58	6151.18	-6150.78	82.80	40°13'16.032"N	104°47'37.045"W	1.76	
13382.00	91.690	178.270	7165.40	6236.14	-6235.73	84.86	40°13'15.193"N	104°47'37.018"W	0.96	
13468.00	92.180	178.320	7162.49	6322.07	-6321.64	87.42	40°13'14.344"N	104°47'36.985"W	0.57	
13527.00	92.300	179.300	7160.19	6381.01	-6380.58	88.64	40°13'13.762"N	104°47'36.969"W	1.67	LAST BHI MWD+IFR SURVEY
13583.00	92.300	179.300	7157.94	6436.97	-6436.53	89.32	40°13'13.209"N	104°47'36.961"W	0.00	PROJECTION TO BIT



Actual Wellpath Report

DCP 16N-17HZ AWP

Page 6 of 8



REFERENCE WELLPATH IDENTIFICATION

Operator	KERR-MCGEE OIL & GAS ONSHORE LP	Slot	SLOT#24 DCP 16N-17HZ (2168' FSL & 559' FEL, SEC.08)
Area	COLORADO	Well	DCP 16N-17HZ
Field	WELD COUNTY (KERR MCGEE)	Wellbore	DCP 16N-17HZ AWP
Facility	SEC.08-T3N-R66W		

HOLE & CASING SECTIONS - Ref Wellbore: DCP 16N-17HZ AWP Ref Wellpath: DCP 16N-17HZ AWP

String/Diameter	Start MD [ft]	End MD [ft]	Interval [ft]	Start TVD [ft]	End TVD [ft]	Start N/S [ft]	Start E/W [ft]	End N/S [ft]	End E/W [ft]
13.5in Open Hole	16.00	932.00	916.00	16.00	932.00	0.00	0.00	0.87	-1.83
9.625in Casing Surface	16.00	932.00	916.00	16.00	932.00	0.00	0.00	0.87	-1.83
8.75in Open Hole	932.00	7547.00	6615.00	932.00	7151.01	0.87	-1.83	-402.22	21.16
7in Casing Intermediate	16.00	7547.00	7531.00	16.00	7151.01	0.00	0.00	-402.22	21.16
6.125in Open Hole	7547.00	13583.00	6036.00	7151.01	7157.94	-402.22	21.16	-6436.53	89.32

TARGETS

Name	MD [ft]	TVD [ft]	North [ft]	East [ft]	Grid East [US ft]	Grid North [US ft]	Latitude	Longitude	Shape
OLIN RAY E UNIT 2 150' RADIUS		860.00	-6100.66	-659.14	3196507.90	1324226.03	40°13'16.528"N	104°47'46.609"W	circle
STATE L16-3 150' RADIUS		860.00	-2809.49	2514.72	3199655.31	1327542.22	40°13'49.050"N	104°47'05.690"W	circle
STATE L16-4 150' RADIUS		860.00	-2668.24	996.77	3198136.35	1327671.37	40°13'50.446"N	104°47'25.261"W	circle
SEC.08-T3N-R66W HARDLINES (460' SETBACKS)		4871.00	0.00	0.00	3197118.41	1330331.47	40°14'16.814"N	104°47'38.112"W	polygon
SEC.08-T3N-R66W SECTION LINES		4871.00	0.00	0.00	3197118.41	1330331.47	40°14'16.814"N	104°47'38.112"W	polygon
SEC.17-T3N-R66W HARDLINES (460' SETBACKS)		4871.00	0.00	0.00	3197118.41	1330331.47	40°14'16.814"N	104°47'38.112"W	polygon
SEC.17-T3N-R66W SECTION LINES		4871.00	0.00	0.00	3197118.41	1330331.47	40°14'16.814"N	104°47'38.112"W	polygon
UPRC 9-12K 150' RADIUS		7152.00	-1445.92	1186.91	3198316.74	1328895.11	40°14'02.525"N	104°47'22.808"W	circle
DCP 16N-17HZ BHL ON PLAT (460' FSL & 740' FEL, SEC.17) REV-1		7191.00	-6980.70	-141.59	3197032.41	1323350.18	40°13'07.831"N	104°47'39.937"W	point
DCP 16N-17HZ BHL ON PLAT (979' FSL & 940' FEL, SEC.17) REV-2		7191.00	-6461.70	58.59	3197228.44	1323870.73	40°13'12.960"N	104°47'37.357"W	point
DCP 16N-17HZ LAND BOX		7191.00	0.00	0.00	3197118.41	1330331.47	40°14'16.814"N	104°47'38.112"W	polygon



Actual Wellpath Report

DCP 16N-17HZ AWP

Page 7 of 8



REFERENCE WELLPATH IDENTIFICATION

Operator	KERR-MCGEE OIL & GAS ONSHORE LP	Slot	SLOT#24 DCP 16N-17HZ (2168' FSL & 559' FEL, SEC.08)
Area	COLORADO	Well	DCP 16N-17HZ
Field	WELD COUNTY (KERR MCGEE)	Wellbore	DCP 16N-17HZ AWB
Facility	SEC.08-T3N-R66W		

WELLPATH COMPOSITION - Ref Wellbore: DCP 16N-17HZ AWB Ref Wellpath: DCP 16N-17HZ AWP

Start MD [ft]	End MD [ft]	Positional Uncertainty Model	Log Name/Comment	Wellbore
16.00	860.00	Generic gyro - continuous (Standard)	MS ENERGY GYRO SURVEYS <116-860>	DCP 16N-17HZ AWB
860.00	7491.00	NaviTrak (MAGCORR,IFR)	BHI MWD+IFR SURVEYS 8 3/4" HOLE <972-7491>	DCP 16N-17HZ AWB
7491.00	13527.00	OnTrak (MAGCORR,IFR)	BHI MWD+IFR SURVEYS 6 1/8" HOLE <7590-13527>	DCP 16N-17HZ AWB
13527.00	13583.00	Blind Drilling (std)	Projection to bit	DCP 16N-17HZ AWB



Actual Wellpath Report

DCP 16N-17HZ AWP

Page 8 of 8



REFERENCE WELLPATH IDENTIFICATION

Operator	KERR-MCGEE OIL & GAS ONSHORE LP	Slot	SLOT#24 DCP 16N-17HZ (2168' FSL & 559' FEL, SEC.08)
Area	COLORADO	Well	DCP 16N-17HZ
Field	WELD COUNTY (KERR MCGEE)	Wellbore	DCP 16N-17HZ AWP
Facility	SEC.08-T3N-R66W		

WELLPATH COMMENTS

MD [ft]	Inclination [°]	Azimuth [°]	TVD [ft]	Comment
16.00	0.000	127.760	16.00	TIE ON
116.00	0.080	127.760	116.00	BEGIN GYRO SURVEYS
860.00	0.080	267.600	860.00	TIE ONTO GYRO SURVEYS
972.00	0.240	327.750	971.99	BEGIN BHI MWD+IFR SURVEYS
7547.00	91.114	180.249	7151.01	7" CASING POINT
13527.00	92.300	179.300	7160.19	LAST BHI MWD+IFR SURVEY
13583.00	92.300	179.300	7157.94	PROJECTION TO BIT