

Williams Production RMT Company

RWF 424-9

API #05-045-12863-00

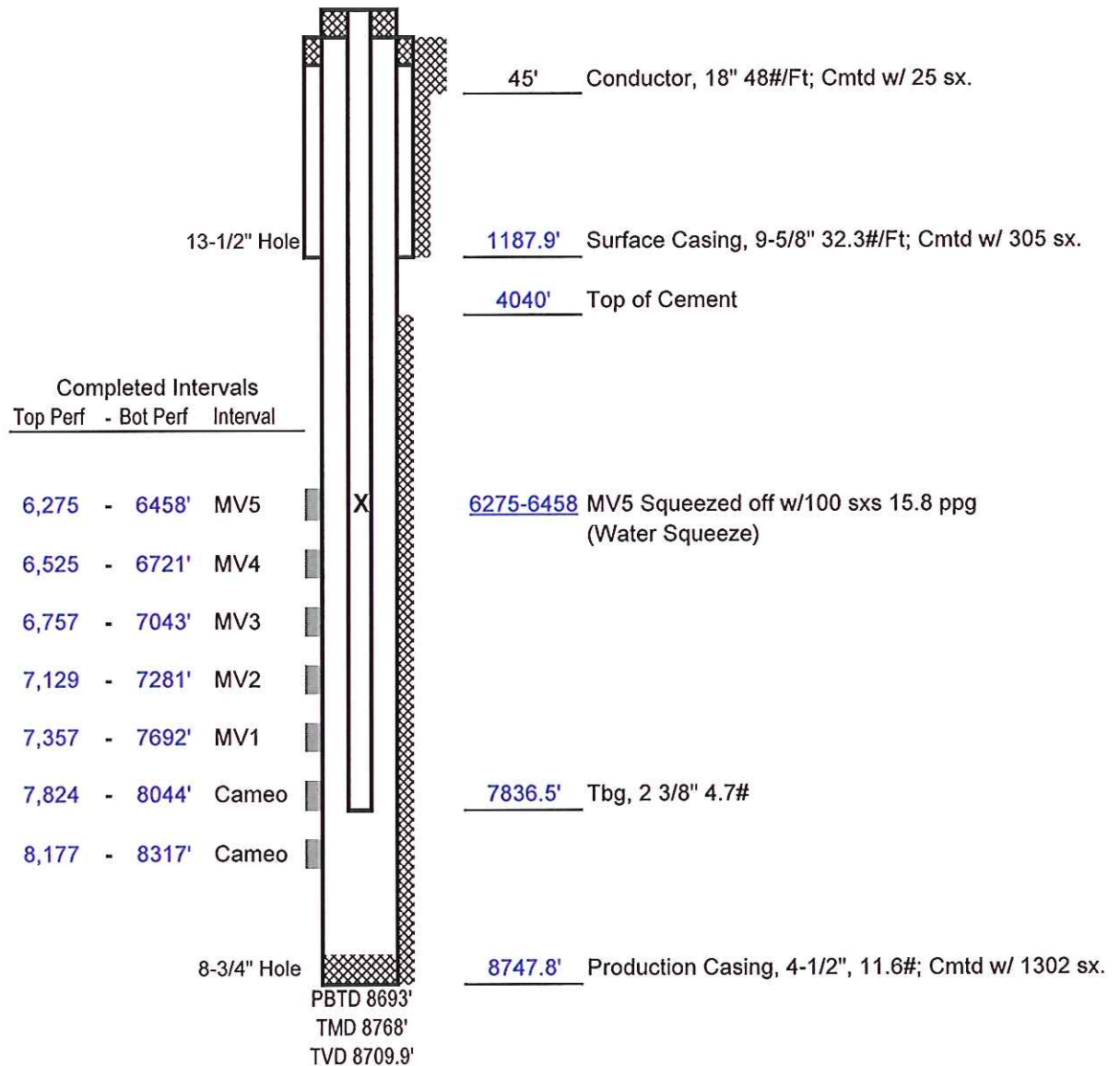
586' FSL x 1237' FWL (SWSW) - SHL

687' FSL x 2022' FWL (SESW) - BHL

Sec. 9-T6S-R94W

Garfield County, Colorado

FINAL - dated 10/17/2012 to rpt MV5 squeezed off.



Not to Scale