

The Road to Excellence Starts with Safety

| | | | | | | | |
|---|--|-------------------|---------------------------------|--|-------------------------|------------------------|--|
| Sold To #: 300721 | | Ship To #: 300721 | | Quote #: | | Sales Order #: 9826913 | |
| Customer: WPX ENERGY ROCKY MOUNTAIN LLC-EBUS | | | | Customer Rep: Brady, Jeff | | | |
| Well Name: RWF | | | Well #: 424-9 | | API/UWI #: 05-045-12863 | | |
| Field: RULISON | | City (SAP): TULSA | | County/Parish: Garfield | | State: Colorado | |
| Lat: N 39.534 deg. OR N 39 deg. 32 min. 2.875 secs. | | | | Long: W 107.899 deg. OR W -108 deg. 6 min. 5.029 secs. | | | |
| Contractor: WORKOVER | | | Rig/Platform Name/Num: WORKOVER | | | | |
| Job Purpose: Squeeze Perfs | | | | | | | |
| Well Type: Development Well | | | Job Type: Squeeze Perfs | | | | |
| Sales Person: MAYO, MARK | | | Srvc Supervisor: ARNOLD, EDWARD | | MBU ID Emp #: 439784 | | |

Job Personnel

| HES Emp Name | Exp Hrs | Emp # | HES Emp Name | Exp Hrs | Emp # | HES Emp Name | Exp Hrs | Emp # |
|---------------------|---------|--------|--------------------|---------|--------|-----------------|---------|--------|
| ARNOLD, EDWARD John | 5 | 439784 | MILLER, KEVIN Paul | 4 | 443040 | SINCLAIR, DAN J | 5 | 338784 |
| VANALSTYNE, TROY L | 5 | 420256 | | | | | | |

Equipment

| HES Unit # | Distance-1 way | HES Unit # | Distance-1 way | HES Unit # | Distance-1 way | HES Unit # | Distance-1 way |
|------------|----------------|------------|----------------|------------|----------------|------------|----------------|
| 10011429 | 60 mile | 10567589C | 60 mile | 11259885 | 60 mile | 11583915 | 60 mile |
| 11808829 | 60 mile | | | | | | |

Job Hours

| Date | On Location Hours | Operating Hours | Date | On Location Hours | Operating Hours | Date | On Location Hours | Operating Hours |
|------------|-------------------|-----------------|------|-------------------|-----------------|------|-------------------|-----------------|
| 10-17-2012 | 5 | 3.5 | | | | | | |

TOTAL Total is the sum of each column separately

Job

Job Times

| Formation Name | Date | Time | Time Zone |
|-----------------------------|---------------|-----------------|-----------|
| Formation Depth (MD) Top | Called Out | 17 - Oct - 2012 | 02:00 MST |
| Bottom | On Location | 17 - Oct - 2012 | 05:30 MST |
| Form Type | Job Started | 17 - Oct - 2012 | 08:04 MST |
| Job depth MD | Job Completed | 17 - Oct - 2012 | 09:14 MST |
| Water Depth | Departed Loc | 17 - Oct - 2012 | 10:30 MST |
| Perforation Depth (MD) From | To | | |

Well Data

| Description | New / Used | Max pressure psig | Size in | ID in | Weight lbm/ft | Thread | Grade | Top MD ft | Bottom MD ft | Top TVD ft | Bottom TVD ft |
|-------------|------------|-------------------|---------|-------|---------------|--------|-------|-----------|--------------|------------|---------------|
|-------------|------------|-------------------|---------|-------|---------------|--------|-------|-----------|--------------|------------|---------------|

Tools and Accessories

| Type | Size | Qty | Make | Depth | Type | Size | Qty | Make | Depth | Type | Size | Qty | Make |
|--------------|------|-----|------|-------|-------------|------|-----|------|-------|----------------|------|-----|------|
| Guide Shoe | | | | | Packer | | | | | Top Plug | | | |
| Float Shoe | | | | | Bridge Plug | | | | | Bottom Plug | | | |
| Float Collar | | | | | Retainer | | | | | SSR plug set | | | |
| Insert Float | | | | | | | | | | Plug Container | | | |
| Stage Tool | | | | | | | | | | Centralizers | | | |

Miscellaneous Materials

| | | | | | | | |
|---------------|------|------------|------|-----------|------|------|---|
| Gelling Agt | Conc | Surfactant | Conc | Acid Type | Qty | Conc | % |
| Treatment Fld | Conc | Inhibitor | Conc | Sand Type | Size | Qty | |

Fluid Data

Stage/Plug #: 1

| Fluid # | Stage Type | Fluid Name | Qty | Qty uom | Mixing Density lbm/gal | Yield ft ³ /sk | Mix Fluid Gal/sk | Rate bbl/min | Total Mix Fluid Gal/sk |
|---------|------------|------------|-----|---------|------------------------|---------------------------|------------------|--------------|------------------------|
|---------|------------|------------|-----|---------|------------------------|---------------------------|------------------|--------------|------------------------|

Stage/Plug #: 1

| Fluid # | Stage Type | Fluid Name | Qty | Qty uom | Mixing Density lbm/gal | Yield ft ³ /sk | Mix Fluid Gal/sk | Rate bbl/min | Total Mix Fluid Gal/sk |
|---------|------------|------------|-----|---------|------------------------|---------------------------|------------------|--------------|------------------------|
|---------|------------|------------|-----|---------|------------------------|---------------------------|------------------|--------------|------------------------|

HALLIBURTON***Cementing Job Summary***

| | | | | | | | | | |
|--|---------------------------|---------------------------------|--------|-----------------------------------|------|---------------------|------|-----------|------|
| Stage/Plug #: 1 | | | | | | | | | |
| 1 | Injection Test | | 10.00 | bbl | 8.33 | .0 | .0 | 2 | |
| 2 | SqueezeCem Tail Cement | SQUEEZECEM (TM) SYSTEM (452971) | 100.0 | sacks | 15.8 | 1.15 | 5.0 | 2 | 5.0 |
| 5 Gal | | FRESH WATER | | | | | | | |
| 3 | Displacement | | | bbl | 8.33 | .0 | .0 | 2 | |
| Calculated Values | | Pressures | | Volumes | | | | | |
| Displacement | 23.9 | Shut In: Instant | | Lost Returns | | Cement Slurry | 20.4 | Pad | |
| Top Of Cement | | 5 Min | | Cement Returns | 6 | Actual Displacement | 20 | Treatment | |
| Frac Gradient | | 15 Min | | Spacers | 10 | Load and Breakdown | | Total Job | 50.4 |
| Rates | | | | | | | | | |
| Circulating | | Mixing | 2 | Displacement | 2 | Avg. Job | | 2 | |
| Cement Left In Pipe | Amount | 0 ft | Reason | Shoe Joint | | | | | |
| Frac Ring # 1 @ | ID | Frac ring # 2 @ | ID | Frac Ring # 3 @ | ID | Frac Ring # 4 @ | ID | | |
| The Information Stated Herein Is Correct | | | | Customer Representative Signature | | | | | |

The Road to Excellence Starts with Safety

| | | | |
|---|---------------------------------|--|------------------------|
| Sold To #: 300721 | Ship To #: 300721 | Quote #: | Sales Order #: 9826913 |
| Customer: WPX ENERGY ROCKY MOUNTAIN LLC-EBUS | Customer Rep: Brady, Jeff | | |
| Well Name: RWF | Well #: 424-9 | API/UWI #: 05-045-12863 | |
| Field: RULISON | City (SAP): TULSA | County/Parish: Garfield | State: Colorado |
| Legal Description: | | | |
| Lat: N 39.534 deg. OR N 39 deg. 32 min. 2.875 secs. | | Long: W 107.899 deg. OR W -108 deg. 6 min. 5.029 secs. | |
| Contractor: WORKOVER | Rig/Platform Name/Num: WORKOVER | | |
| Job Purpose: Squeeze Perfs | | Ticket Amount: | |
| Well Type: Development Well | Job Type: Squeeze Perfs | | |
| Sales Person: MAYO, MARK | Srvc Supervisor: ARNOLD, EDWARD | MBU ID Emp #: 439784 | |

| Activity Description | Date/Time | Cht # | Rate bbl/min | Volume bbl | | Pressure psig | | Comments |
|---------------------------------------|------------------|-------|--------------|------------|-------|---------------|--------|---|
| | | | | Stage | Total | Tubing | Casing | |
| Call Out | 10/17/2012 02:15 | | | | | | | |
| Pre-Convoy Safety Meeting | 10/17/2012 04:15 | | | | | | | Including entire cement crew. |
| Crew Leave Yard | 10/17/2012 04:30 | | | | | | | |
| Arrive At Loc | 10/17/2012 05:30 | | | | | | | Arrived at location. No light to work with, waited for day light to rig up. |
| Assessment Of Location Safety Meeting | 10/17/2012 07:00 | | | | | | | Water; PH 6.5; KCL 200; So4<200 ; Fe0 ; Calcium 120; Chlorides 0; Temp 54; TDS 130. |
| Pre-Rig Up Safety Meeting | 10/17/2012 07:10 | | | | | | | Including entire cement crew. |
| Rig-Up Equipment | 10/17/2012 07:15 | | | | | | | 1 Elite # 3; 1 400 bulk truck; 1 hard line to manifold; 1 hard line to floor; 1 hard line to pit; 1 line to water truck. |
| Rig-Up Completed | 10/17/2012 07:45 | | | | | | | |
| Pre-Job Safety Meeting | 10/17/2012 07:55 | | | | | | | Including everyone on location. |
| Start Job | 10/17/2012 08:04 | | | | | | | Tubing 6182' 2.875" 4.7# J-55; Casing 4.5" 11.6# I-80; Perforations 6272-6457; Bridge plug at 6500'; Sand to 6475; Well fluid 8.4 ppg. Max PSI set at 2000. |
| Pump Water | 10/17/2012 08:05 | | 1 | 2 | | 4.0 | | Fill lines with fresh water. |
| Test Lines | 10/17/2012 08:07 | | | | | | | Good pressure test, no leaks. |
| Injection Test | 10/17/2012 08:12 | | 2 | 10 | | .0 | | 10 BBL fresh water injection test. |

Sold To #: 300721

Ship To #: 300721

Quote #:

Sales Order #: 9826913

SUMMIT Version: 7.3.0045

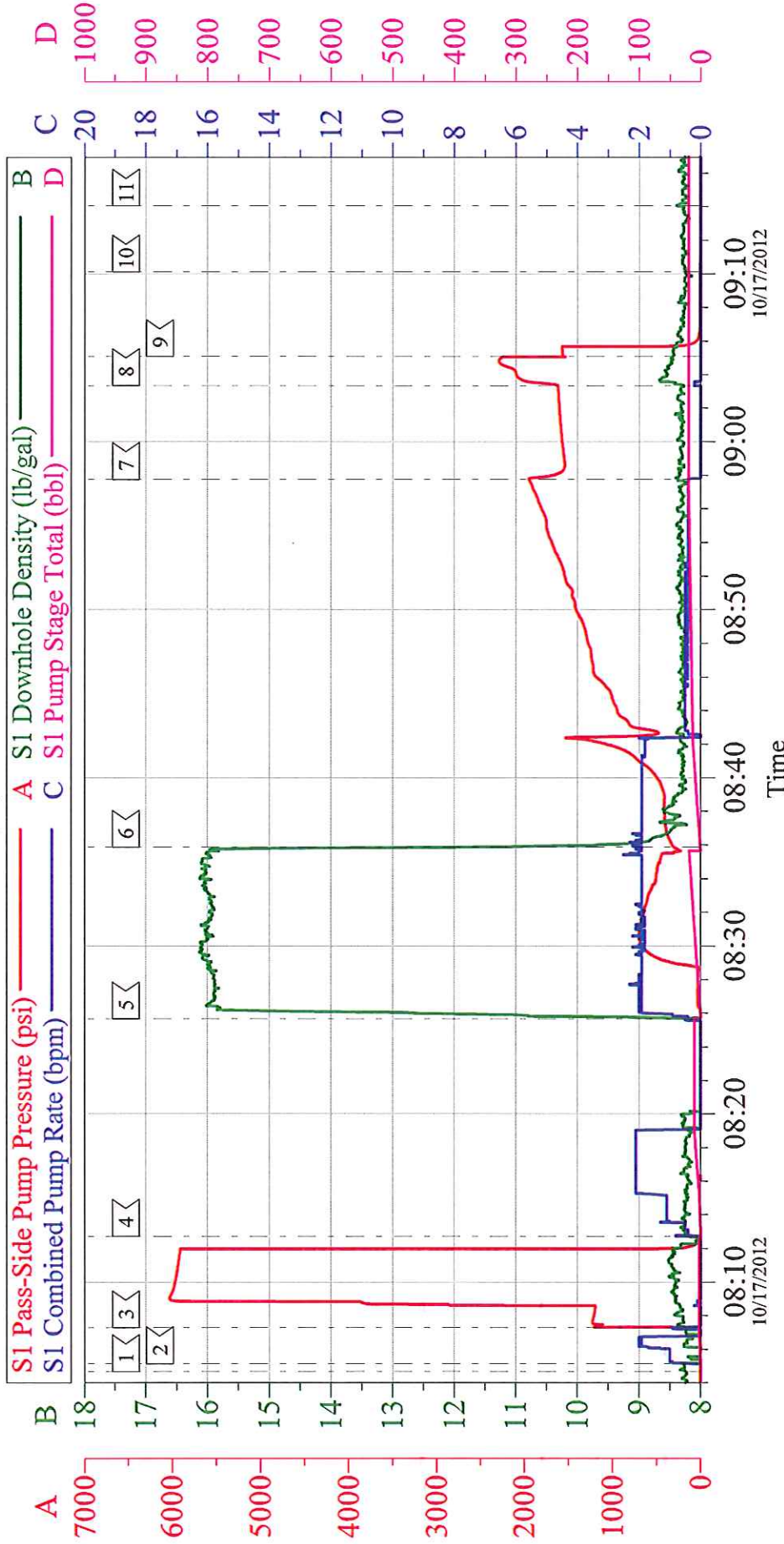
Tuesday, October 23, 2012 11:37:00

Cementing Job Log

| Activity Description | Date/Time | Cht # | Rate bbl/min | Volume bbl | | Pressure psig | | Comments |
|-----------------------------|------------------|-------|--------------|------------|-------|---------------|--------|---|
| | | | | Stage | Total | Tubing | Casing | |
| Pump Cement | 10/17/2012 08:25 | | 2 | 20.4 | | 546.0 | | 100 sks Cement, 15.8 ppg, 1.15 cf3, 5.0 gal/sk. |
| Pump Displacement | 10/17/2012 08:35 | | 2 | 19.5 | | 1950.0 | | Fresh water displacement. |
| Stage Cement | 10/17/2012 08:57 | | | | | | | Stage cement for 5 minutes |
| Other | 10/17/2012 09:05 | | 0.5 | 0.5 | 20 | 2000.0 | | Cement squeezed off with 20 bbl.'s of displacement gone. |
| Reverse Circ Well | 10/17/2012 09:10 | | | | | | | Rig reversed out 42 BBL's, 6 BBL of cement back. |
| End Job | 10/17/2012 09:14 | | | | | | | Used 100 lbs. of sugar. No Add Hours. |
| Pre-Rig Down Safety Meeting | 10/17/2012 09:30 | | | | | | | Including entire cement crew. |
| Rig-Down Equipment | 10/17/2012 09:40 | | | | | | | |
| Rig-Down Completed | 10/17/2012 10:20 | | | | | | | |
| Pre-Convoy Safety Meeting | 10/17/2012 10:25 | | | | | | | Including entire cement crew. |
| Crew Leave Location | 10/17/2012 10:30 | | | | | | | Crew leave location for Service Center or another location. |
| Other | 10/17/2012 10:30 | | | | | | | Thank You for using Halliburton. Ed Arnold and Crew. |

WPX - RWF 424-9

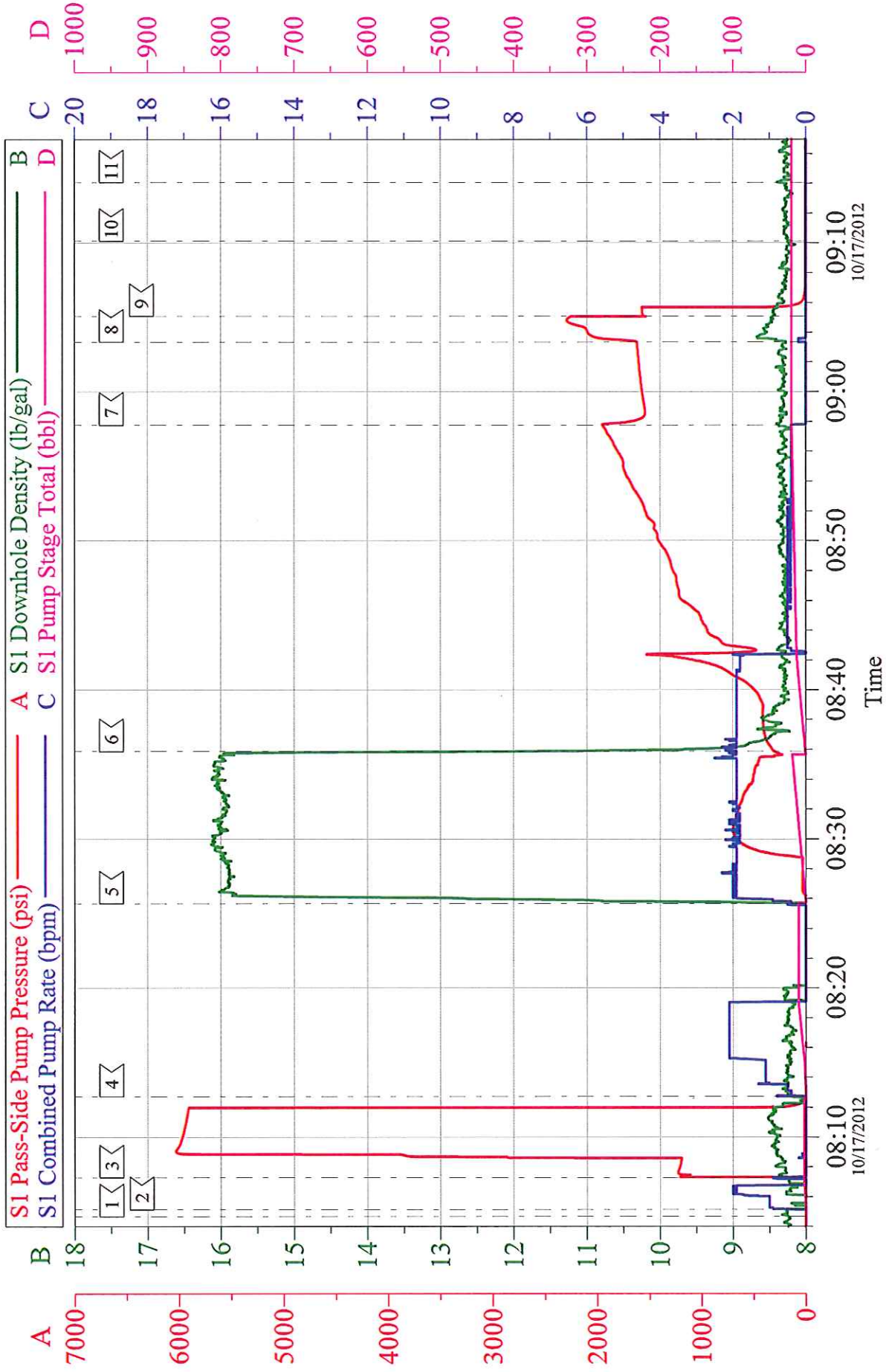
SQUEEZE



| | | |
|-----------------------------|------------------------------|------------------------|
| Customer: WPX | Job Date: 17-Oct-2012 | Sales Order #: 9826913 |
| Well Description: RWF 424-9 | Job Type: SQUEEZE | ADC Used: YES |
| Company Rep: JEFF DUCY | Cement Supervisor: ED ARNOLD | Elite #3: DAN SINCLAIR |

WPX - RWF 424-9

SQUEEZE



| | | |
|-----------------------------|------------------------------|------------------------|
| Customer: WPX | Job Date: 17-Oct-2012 | Sales Order #: 9826913 |
| Well Description: RWF 424-9 | Job Type: SQUEEZE | ADC Used: YES |
| Company Rep: JEFF DUCY | Cement Supervisor: ED ARNOLD | Elite #3: DAN SINCLAIR |