

The Road to Excellence Starts with Safety

Sold To #:	300721	Ship To #:	2958221	Quote #:		Sales Order #:	900754208	
Customer:	WPX ENERGY ROCKY MOUNTAIN LLC-EBUS						Customer Rep:	Dunnick, Brian
Well Name:	RWF	Well #:	424-9	API/UWI #:	05-045-12863			
Field:	Rulison	City (SAP):	RIFLE	County/Parish:	Garfield	State:	Colorado	
Lat:	N 39.534 deg. OR N 39 deg. 32 min. 2.875 secs.			Long:	W 107.899 deg. OR W -103 deg. 6 min. 5.029 secs.			
Contractor:	WORKOVER			Rig/Platform Name/Num:	Workover			
Job Purpose:	Squeeze Perfs							
Well Type:	Development Well							
Sales Person:	MAYO, MARK	Job Type:	Squeeze Perfs		Job Supervisor:	SMITH, DUSTIN		
					MBU ID Emp #:	418015		

HES Emp Name	Exp Hrs	Emp #	HES Emp Name	Exp Hrs	Emp #	HES Emp Name	Exp Hrs	Emp #
BLANCHETTE, JAMES George	4.0	371360	BLUST, CHARLES Thomas	3.5	386662	EICKHOFF, ROBERT Edward	4.0	495311
SMITH, DUSTIN Michael	4.0	418015						

HES Unit #	Distance-1 way	HES Unit #	Distance-1 way	HES Unit #	Distance-1 way
10011429	60 mile	10551730C	60 mile	11583932	60 mile
					Distance-1 way
					60 mile

Date	On Location Hours	Operating Hours	Date	On Location Hours	Operating Hours
09/18/13	4	3			
TOTAL			Total is the sum of each column separately		

Formation Name	Top	Bottom	Called Out	Date	Time	Time Zone
Form Type		BHST	On Location	18 - Sep - 2013	00:00	MST
Job depth MD	6458. ft	Job Depth TVD	6458. ft	Job Started	18 - Sep - 2013	12:00
Water Depth		Wk Ht Above Floor	5. ft	Job Completed	18 - Sep - 2013	13:05
Perforation Depth (MD)	From 6,800.00 ft	To	6,810.00 ft	Departed Loc	18 - Sep - 2013	14:22
					16:00	MST

Description	New / Used	Max pressure psig	Size in	ID in	Weight lbm/ft	Thread	Grade	Top MD ft	Bottom MD ft	Top TVD ft	Bottom TVD ft
Perforation Interval								6800.	6810.		

Type	Size	Qty	Make	Depth	Type	Size	Qty	Make
Guide Shoe				Packer	Top Plug	6152		
Float Shoe				Bridge Plug	Bottom Plug	6505		
Float Collar				Retainer	SSR plug set			
Insert Float					Plug Container			
Stage Tool					Centralizers			

Gelling Agt	Conc	Surfactant	Conc	Acid Type	Qty	Conc %
Treatment Fld	Conc	Inhibitor	Conc	Sand Type	Size	Qty

Fluid Data						
Stage/Plug #: 1						
Fluid #	Stage Type	Fluid Name	Qty	Mixing Density lbm/gal	Yield ft3/sk	Total Mix Fluid Gal/sk

Stage/Plug #: 1

Stage/Plug #: 1														
Fluid #	Stage Type	Fluid Name			Qty	Qty uom	Mixing Density lbm/gal	Yield ft3/sk	Mix Fluid Gal/sk	Rate bbl/min	Total Mix Fluid Gal/sk			
1	Fresh Water				10.00	bbl	8.33	.0	.0	1.0				
2	SqueezeCem Tail Cement	SQUEEZECEM (TM) SYSTEM (452971)			70.0	sacks	17.	.99	3.76	2.0	3.76			
		3.76 Gal FRESH WATER												
3	Displacement Fluid				22.75	bbl	8.34	.0	.0	1.5				
Calculated Values		Pressures			Volumes									
Displacement	23.8	Shut In: Instant	3200	Lost Returns	0	Cement Slurry			12.3	Pad				
Top Of Cement		5 Min		Cement Returns	0	Actual Displacement			22.75	Treatment				
Frac Gradient		15 Min		Spacers	10	Load and Breakdown				Total Job	45			
Rates														
Circulating		Mixing	2	Displacement		1.5			Avg. Job		1			
Cement Left In Pipe	Amount	Reason												
Frac Ring # 1 @	ID	Frac ring # 2 @	ID	Frac Ring # 3 @	ID	Frac Ring # 4 @	ID							
The Information Stated Herein Is Correct			Customer Representative Signature											

The Road to Excellence Starts with Safety

Sold To #: 300721	Ship To #: 2958221	Quote #:	Sales Order #: 900754208
Customer: WPX ENERGY ROCKY MOUNTAIN LLC-EBUS			Customer Rep: Dunnick, Brian
Well Name: RWF		Well #: 424-9	API/UWI #: 05-045-12863
Field: Rulison	City (SAP): RIFLE	County/Parish: Garfield	State: Colorado
Legal Description:			
Lat: N 39.534 deg. OR N 39 deg. 32 min. 2.875 secs.		Long: W 107.899 deg. OR W -108 deg. 6 min. 5.029 secs.	
Contractor: WORKOVER		Rig/Platform Name/Num: Workover	
Job Purpose: Squeeze Perfs			Ticket Amount:
Well Type: Development Well		Job Type: Squeeze Perfs	
Sales Person: MAYO, MARK		Srvc Supervisor: SMITH, DUSTIN	MBU ID Emp #: 418015

Activity Description	Date/Time	Cht #	Rate bbl/min	Volume bbl		Pressure psig	Comments
				Stage	Total	Tubing	Casing
Depart Location for Service Center or Other Site	09/18/2013 11:00						FINISHED JOB ON SG 342-22 AND DEPARTED LOCATION
Arrive At Loc	09/18/2013 12:00						HES CREW ARRIVED ON LOCATION @ 1200 BULK CEMENT ARRIVED ON LOCATION @ 1230 STARTED CHARGING TIME THEN RIG WAITING ON HES
Assessment Of Location Safety Meeting	09/18/2013 12:10						ALL HES EMPLOYEES
Pre-Rig Up Safety Meeting	09/18/2013 12:10						ALL HES EMPLOYEES
Rig-Up Equipment	09/18/2013 12:20						1 HT-400 PUMP TRUCK (ELITE #2) 1 BODY LOAD BULK TRUCK 1 F-550 PICKUP
Pre-Job Safety Meeting	09/18/2013 12:50						ALL HES EMPLOYEES AND RIG CREW
Start Job	09/18/2013 13:05						2 3/8 4.7# J-5 CSG SET @ 6152 PACKER SET @ 6152 PERFS FROM 6275- 6458 BP @ 6505 4 1/2 11.6# CSG 1000 PSI WAS HELD ON THE BACKSIDE DURING JOB
Test Lines	09/18/2013 13:09					5300.0	PRESSURE TEST OK
Pump Spacer	09/18/2013 13:17		1	10		3240.0	FRESH H2O SPACER
ISIP	09/18/2013 13:29					3200.0	SHUTDOWN ESTABLISH ISIP
Activity Description	Date/Time	Cht	Rate bbl/min	Volume bbl		Pressure psig	Comments

Sold To #: 300721

Ship To #: 2958221

Quote #:

Sales Order #: 900754208

SUMMIT Version: 7.3.0106

Monday, September 30, 2013 09:54:00

		#	Stage	Total	Tubing	Casing	
Pump Tail Cement	09/18/2013 13:34		2	12.3		1700.0	70 SKS 17.0 PPG 0.99 YIELD 3.76 GAL/SK TAIL CEMENT WEIGHT VERIFIED VIA MUD SCALES THROUGHOUT TAIL CEMENT
Pump Displacement	09/18/2013 13:44		2.2	9		980.0	SHUTDOWN @ 9 BBLs OF DISPLACEMENT GONE FOR RIG TO CLOSE BYPASS VALVE ON PACKER SHUTDOWN
Shutdown	09/18/2013 13:48						
Pump Displacement	09/18/2013 13:49		1.5	13.5	22.5	3465.0	PUMP 13.5 BBLs OF DISPLACEMENT 22.5 TOTAL AND SHUT DOWN AS PER COMPANY REP SHUTDOWN
Shutdown	09/18/2013 14:07						
Pump Displacement	09/18/2013 14:12		0.2	0.25	22.75	4499.0	PUMP 1/4 BBL PRESSURED UP TO 4499 AND SHUTDOWN AS PER COMPANY REP SHUTDOWN
Shutdown	09/18/2013 14:14						
Other	09/18/2013 14:16						RELEASE PRESSURE AS PER COMPANY REP 1/4 BBL BACK TO DISPLACEMENT TANKS
Pump Displacement	09/18/2013 14:16		0.2	0.25		4412.0	PUMP 1/4 BBL PRESSURED UP TO 4412 AND SHUTDOWN AS PER COMPANY REP SHUTDOWN
Shutdown	09/18/2013 14:18						
Other	09/18/2013 14:20						BLEED PRESSURE BACK TO 1500 PSI AND TURN OVER TO RIG TO UNSET PACKER AND REVERSE OUT
Activity Description	Date/Time	Cht #	Rate bbl/ min	Volume bbl	Pressure psig	Comments	
				Stage	Total	Tubing	Casing

Sold To # : 300721

Ship To # :2958221

Sales Order # : 900754208

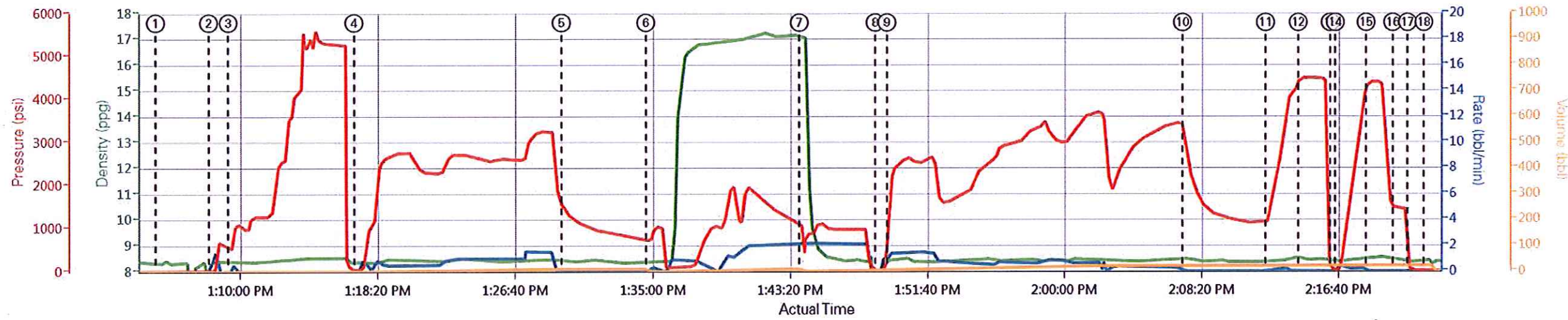
SUMMIT Version: 7.3.0106

Monday, September 30, 2013 09:54:00

Quote # :

Other	09/18/2013 14:21								RIG UNSET PACKER AND REVERSE OUT REVERSED OUT 50 BBLs 2 BBLs OF CEMENT REVERSED OUT
Pre-Rig Down Safety Meeting	09/18/2013 14:25								ALL HES EMPLOYEES
Rig-Down Equipment	09/18/2013 14:30								
End Job	09/18/2013 15:02								SQUEEZE MANIFOLD WAS NOT USED AND WAS REMOVED FROM THE TICKET NO SUGAR WAS USED AND WAS ALSO REMOVED FROM THE TICKET
Pre-Convoy Safety Meeting	09/18/2013 15:50								ALL HES EMPLOYEES
Crew Leave Location	09/18/2013 16:00								THANK YOU FOR USING HALLIBURTON CEMENT DUSTIN SMITH AND CREW

WPX - RWF 424-9 - SQUEEZE

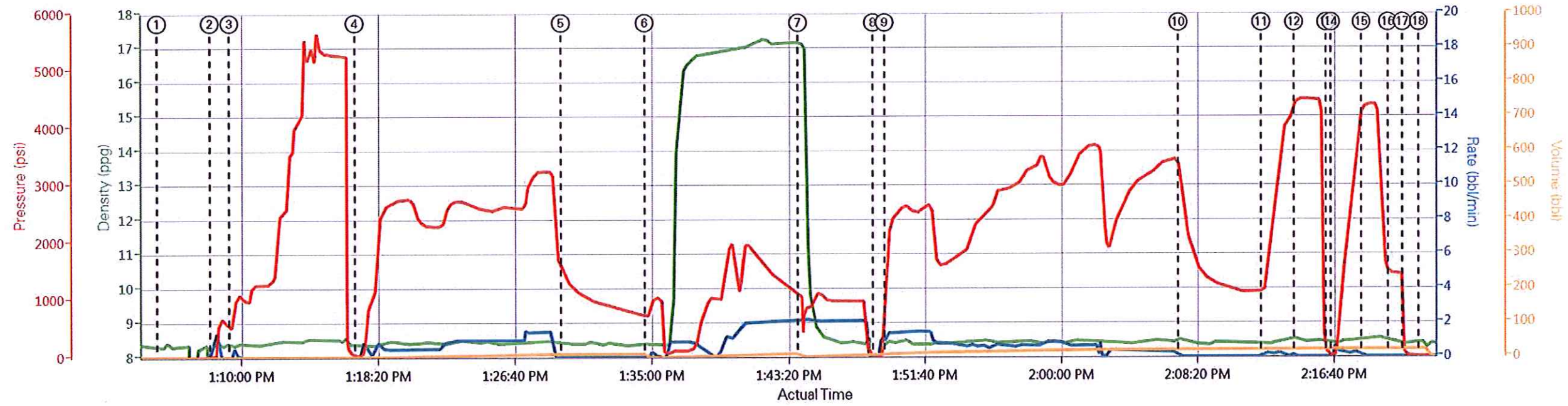


DH Density (ppg) Comb Pump Rate (bbl/min) PS Pump Press (psi) Pump Stg Tot (bbl)

- | | | | | | |
|-------------------------------|----------------------------------|---------------------------------------|---------------------------------------|------------------------------------|---|
| ① Start Job 8.34;0;6;0 | ④ Pump Spacer 1 8.32;0;33;0 | ⑦ Pump Displacement 17.12;2.1;1062;0 | ⑩ Shutdown 8.51;0;2983;21.9 | ⑬ Release Pressure 8.44;0;49;22.2 | ⑯ Bleed Pressure to 1500 Psi 8.49;0;1462;22.7 |
| ② Fill Lines 8.35;0.9;13;0 | ⑤ Shutdown / Isip 8.44;0;1444;10 | ⑧ Shutdown 0.04;0;10;8.7 | ⑪ Pump Displacement 8.4;0.1;1151;21.9 | ⑭ Pump Displacement 8.39;0;16;22.2 | ⑰ Rig Unset Packer / Reverse out 8.37;0;58;22.7 |
| ③ Test Lines 8.33;0.1;485;0.5 | ⑥ Pump Tail Cement 8.4;0;720;0 | ⑨ Pump Displacement 8.44;1.4;1737;9.3 | ⑫ Shutdown 8.58;0;4475;22.2 | ⑮ Shutdown 8.53;0;4372;22.7 | ⑱ End Job 8.42;0;8;22.7 |

Customer: WPX ENERGY ROCKY MOUNTAIN LLC-EBUS	Job Date: 9/18/2013 12:53:01 PM	Well: RWF 424-9
Representative: BRIAN DUNNICK	Sales Order #: 900754208	ELITE # 2: DUSTIN SMITH / ROB EICKHOFF

WPX - RWF 424-9 - SQUEEZE



DH Density (ppg) Comb Pump Rate (bbl/min) PS Pump Press (psi) Pump Stg Tot (bbl)

Customer: WPX ENERGY ROCKY MOUNTAIN LLC-EBUS	Job Date: 9/18/2013 12:53:01 PM	Well: RWF 424-9
Representative: BRIAN DUNNICK	Sales Order #: 900754208	ELITE # 2: DUSTIN SMITH / ROB EICKHOFF