

CHEVRON - MID-CONTINENT EBIZ
760 Horizon Dr
Grand Junction, CO 81506

SKR 598-25-BV-02

Interval 1
Garfield County, Colorado

Sales Order: 900659002

Post Job Report

For: Kieth Hejl
Date: Sunday, August 11, 2013

Notice: Although the information contained in this report is based on sound engineering practices, the copyright owner(s) does (do) not accept any responsibility whatsoever, in negligence or otherwise, for any loss or damage arising from the possession or use of the report whether in terms of correctness or otherwise. The application, therefore, by the user of this report or any part thereof, is solely at the user's own risk.

HALLIBURTON

Table of Contents

1.0 Well Information 3

 1.1 Customer Information 3

 1.2 Pipe Information 4

 1.3 Perforation Intervals 4

2.0 Actual Stage Summary 5

 2.1 Stage Summary 5

3.0 Performance Highlights..... 8

 3.1 Job Summary..... 8

 3.2 Job Event Log 9

4.0 Attachments..... 10

 4.1 Treating Chart 10

 4.2 Chemical Chart 11

 4.3 Averages Chart..... 12

 4.4 Net Pressure Plot 13

1.0 WELL INFORMATION**1.1 Customer Information**

Customer	CHEVRON - MID-CONTINENT EBIZ
Sales Order	900659002
Well Name	SKR
Rig Type	None
Interval	1
Well Number	598-25-BV-02
Job Date	11-Aug-2013
County	Garfield
State	Colorado
UWI/API	0504515276
Country	United States of America
H2S Present	Unknown
CO2 Present	Unknown
Customer Representative	Kieth Hejl
Halliburton Representative	Swanson

1.2 Pipe Information

Equipment	Top MD ft	Bottom MD ft	OD in	ID in	Weight lb/ft
Surface Pipe	0.0	50.0	5.000	4.000	
Casing	0.0	4856.0	4.500	4.000	11.60

1.3 Perforation Intervals

Top MD ft	Bottom MD ft	Number of Shots	Perf Density spf	Perf Diameter in
4555.0	4773.0	27	0.1	0.340

2.0 ACTUAL STAGE SUMMARY

2.1 Stage Summary

Stage Number	Stage Time	Start Time	End Time	Time min	Pump Time min	Max Treat Pr psi	Max Slurry Rate bpm
1	11-Aug-13 07:42:27	07:40:05	11-Aug-13 07:42:27	2.40	1.83	6417	52.0
2	11-Aug-13 07:46:14	07:42:28	11-Aug-13 07:46:14	3.78	3.78	4563	55.7
3	11-Aug-13 08:10:38	07:46:15	11-Aug-13 08:10:38	24.40	24.40	4974	63.9
4	11-Aug-13 08:26:53	08:10:39	11-Aug-13 08:26:53	16.25	16.25	4539	64.0
5	11-Aug-13 08:37:55	08:26:54	11-Aug-13 08:37:55	11.03	11.03	4780	63.8
6	11-Aug-13 08:41:20	08:37:56	11-Aug-13 08:41:20	3.42	3.23	4810	63.9
7	11-Aug-13 08:41:23	08:41:21	11-Aug-13 08:41:23	0.05	0.00	0	0.0

Stage Number	Stage Time	Max Wellhead Rate bpm	Max Prop Conc lb/gal	Max Slurry Prop Conc lb/gal	Avg Treating Pressure psi	Avg Clean Rate bpm	Avg Slurry Rate bpm
1	11-Aug-13 07:42:27	52.0	0.41	0.41	2598	37.0	37.1
2	11-Aug-13 07:46:14	55.7	0.25	0.25	4229	46.0	46.4
3	11-Aug-13 08:10:38	63.9	0.50	0.53	4642	61.9	63.2
4	11-Aug-13 08:26:53	64.0	0.77	0.79	4396	61.9	63.8

Stage Number	Stage Time	Max Wellhead Rate bpm	Max Prop Conc lb/gal	Max Slurry Prop Conc lb/gal	Avg Treating Pressure psi	Avg Clean Rate bpm	Avg Slurry Rate bpm
5	11-Aug-13 08:37:55	63.8	0.98	0.98	4594	61.2	63.7
6	11-Aug-13 08:41:20	63.9	0.10	0.00	4057	52.9	52.9
7	11-Aug-13 08:41:23	0.0	0.00	0.00	0	0.0	0.0

Stage Number	Stage Time	Avg Wellhead Rate bpm	Avg Slurry Prop Conc lb/gal	Avg Hydraulic Horsepower hp	Clean Volume gal	Slurry Volume gal	Wellhead Volume gal
1	11-Aug-13 07:42:27	37.1	0.23	2359	2912	2917	2853
2	11-Aug-13 07:46:14	46.4	0.22	4812	7306	7378	7378
3	11-Aug-13 08:10:38	63.2	0.45	7184	63433	64725	64725
4	11-Aug-13 08:26:53	63.8	0.69	6878	42255	43576	43576
5	11-Aug-13 08:37:55	63.7	0.90	7170	28360	29516	29516
6	11-Aug-13 08:41:20	52.9	0.00	5258	7182	7182	7182
7	11-Aug-13 08:41:23	0.0	0.00	0	0	0	0
Total					151448	155295	155231

Stage Number	Stage Time	Prop Mass 100*lb
1	11-Aug-13 07:42:27	1.08

Stage Number	Stage Time	Prop Mass 100*lb
2	11-Aug-13 07:46:14	16.01
3	11-Aug-13 08:10:38	284.69
4	11-Aug-13 08:26:53	290.97
5	11-Aug-13 08:37:55	254.84
6	11-Aug-13 08:41:20	0.00
7	11-Aug-13 08:41:23	0.00
Total		847.59

3.0 PERFORMANCE HIGHLIGHTS

3.1 Job Summary

Start Time	11-Aug-13 06:57:54	
End Time	11-Aug-13 08:41:23	

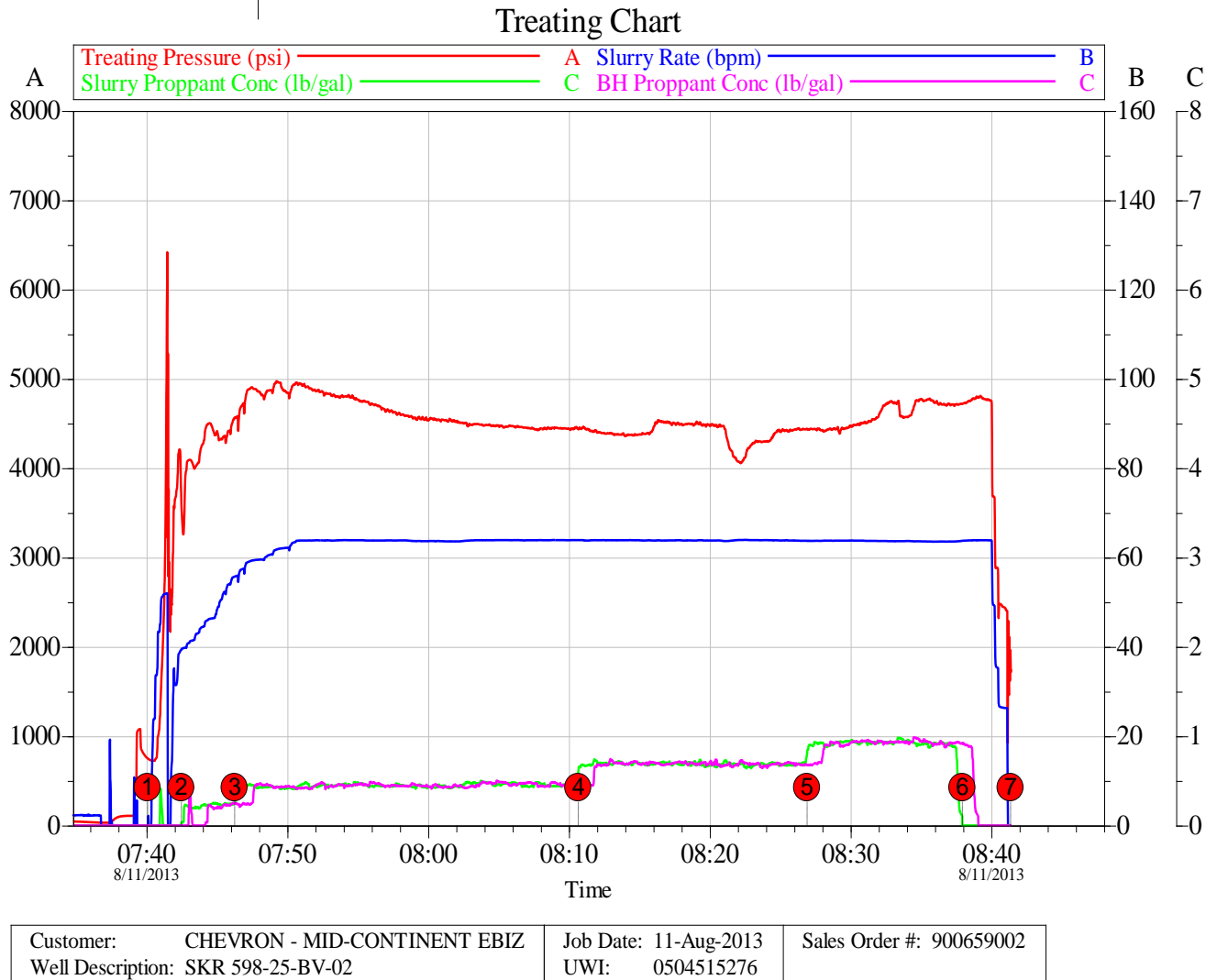
SKR 598-25-BV-02 Stage 1		
8/11/2013		
Engineering Notes		
Engineer on Location	Drew Mogck	
ISDP	1849	psi
Initial Pressure(Breakdown)	4211	psi
Max Pressure	6417	psi
Average Pressure	4544	psi
Max Rate	63.95	bpm
Average Rate	63.8	bpm
Proppant Design Volume	93,413	lbs
Proppant in Formation	93,500	lbs
FR-66 Used	32	gals
BE-7 Used	118	gals
SandWedge WF	91	lbs
SCW-4212 Used	22	gals
Clean Volume	3606	bbls
Start Time	7:40 AM	HH:MM
End Time	8:40 AM	HH:MM
Job Notes:		
Pumped to completion		

3.2 Job Event Log

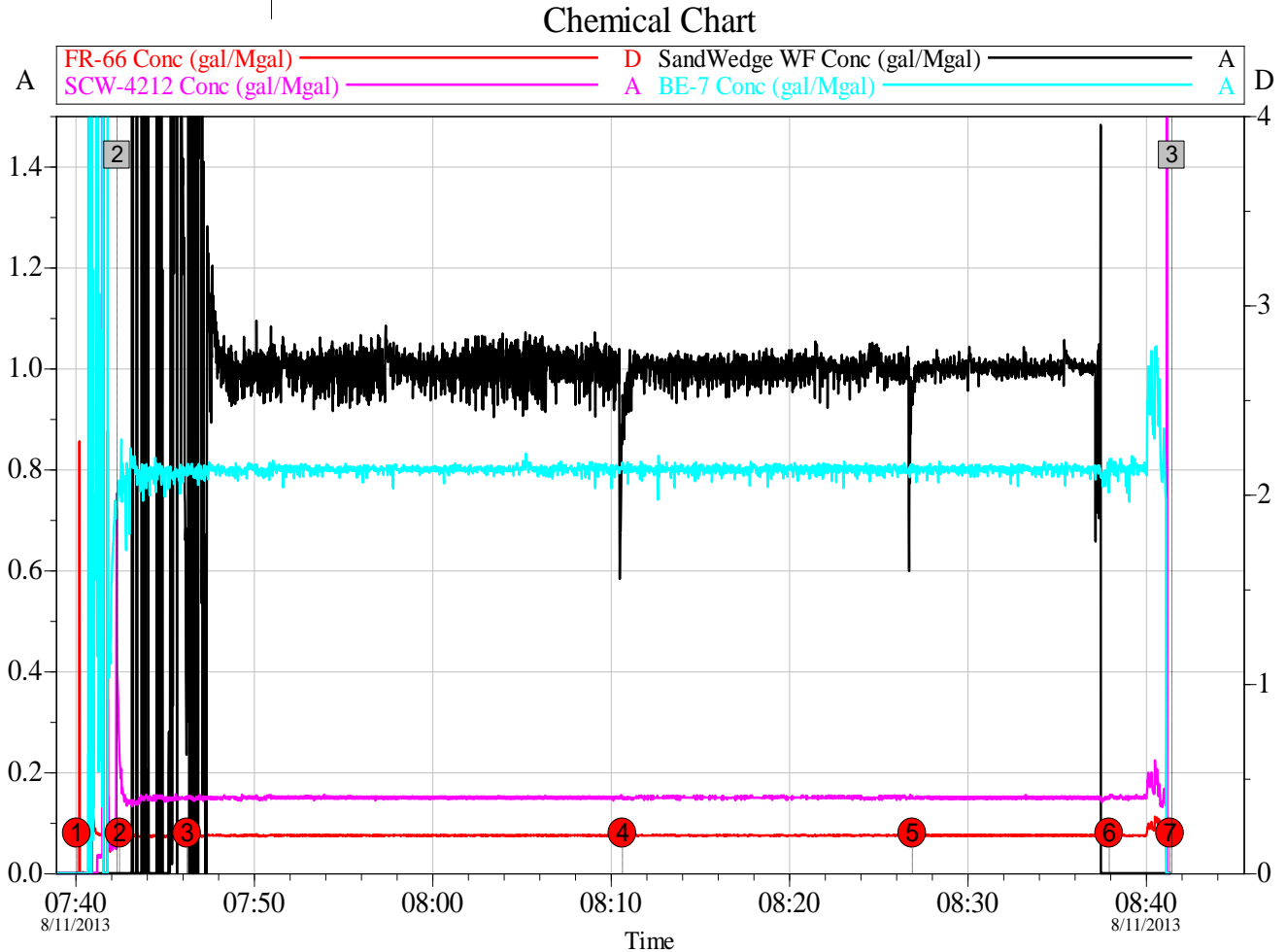
Stage Number	Event Number	Time	Description	Comment	Treating Pressure psi	Slurry Rate bpm	Braden Pressure psi	Job Slurry Vol gal
	1	11-Aug-13 06:57:54	Start Job	Starting Job				
1		07:40:04	Stage 1	Pad	752	0.0	150	0
		07:40:05	Start Averaging	Start Avg Trt 1	750	0.0	151	0
	2	07:42:20	Break Formation	Break Formation = 4211 psi @ 38.75 bpm	4208	38.6	151	2698
2		07:42:28	Stage 2	Proppant Laden Fluid	3591	39.4	152	2917
3		07:46:15	Stage 3	Proppant Laden Fluid	4563	55.7	152	10295
4		08:10:39	Stage 4	Proppant Laden Fluid	4437	63.9	150	75020
5		08:26:54	Stage 5	Proppant Laden Fluid	4441	63.8	146	118596
6		08:37:56	Stage 6	Flush	4721	63.7	142	148112
7		08:41:21	Stage 7	Shut-In	1862	0.0	141	155295
		08:41:23	End Averaging	End Avg Trt 1	1751	0.0	141	155295
	3	08:41:27	End Job	Ending Job	1751	0.0	141	155295

4.0 ATTACHMENTS

4.1 Treating Chart



4.2 Chemical Chart

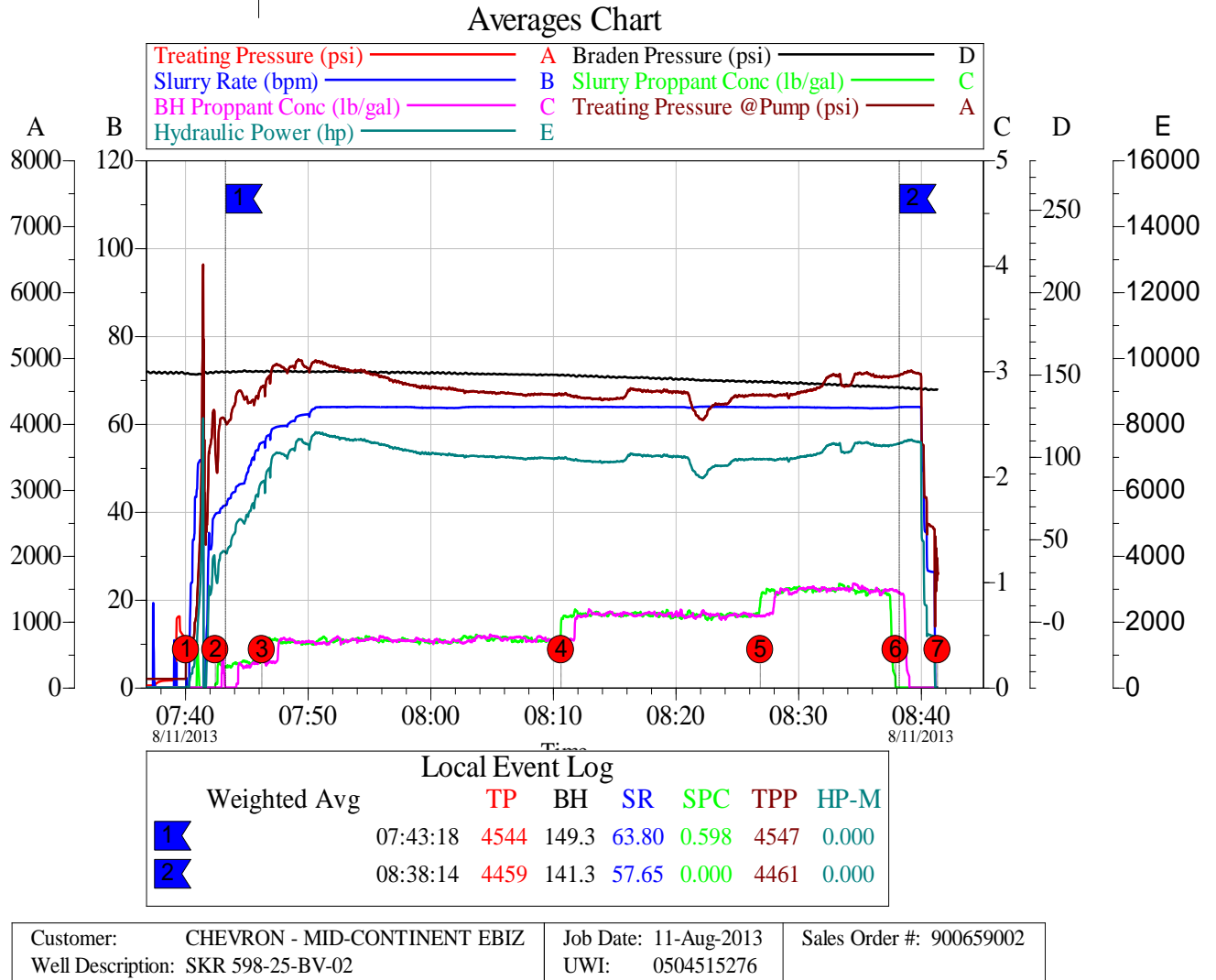


Customer: CHEVRON - MID-CONTINENT EBIZ
Well Description: SKR 598-25-BV-02

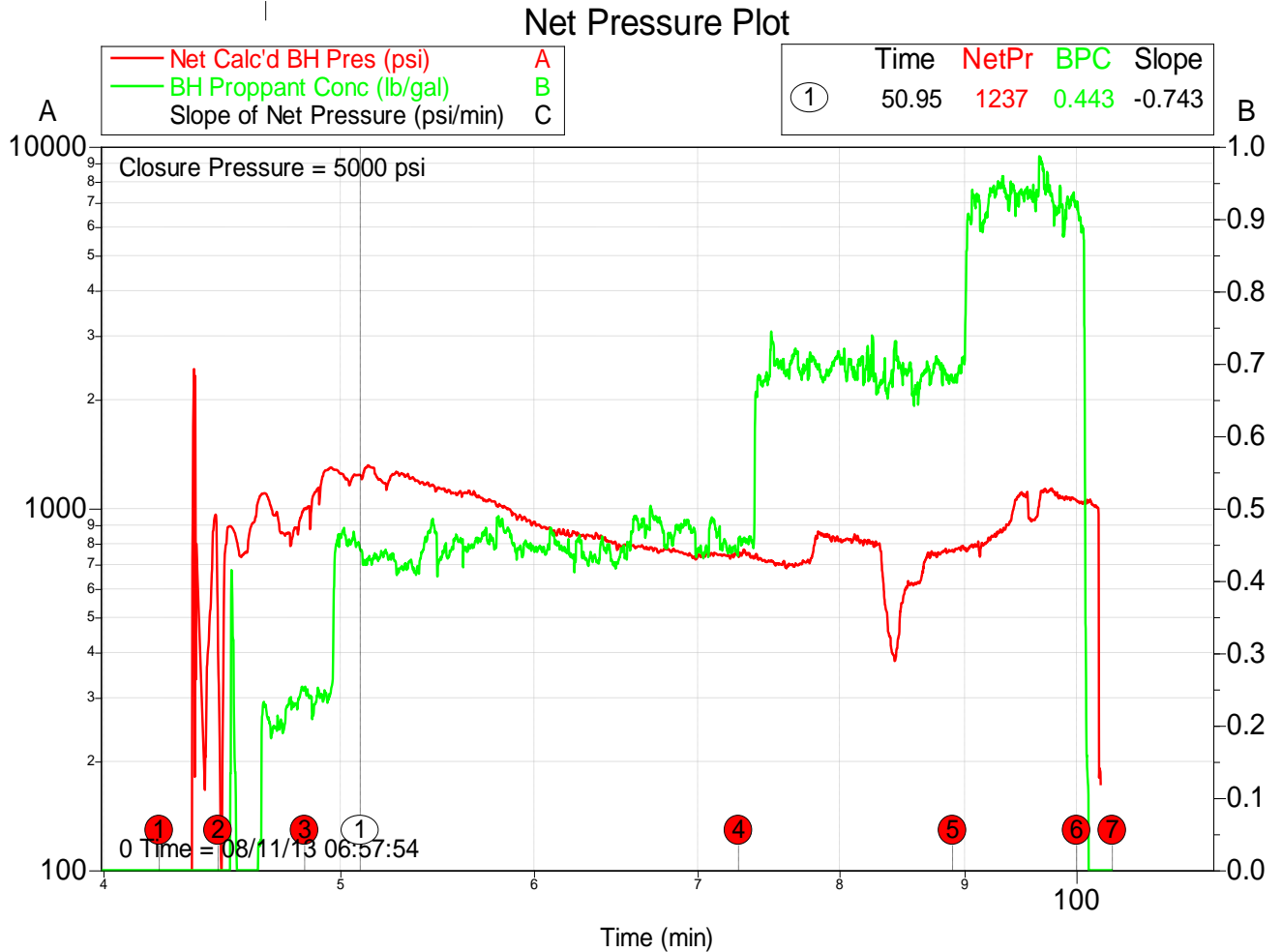
Job Date: 11-Aug-2013
UWI: 0504515276

Sales Order #: 900659002

4.3 Averages Chart



4.4 Net Pressure Plot



Customer: CHEVRON - MID-CONTINENT EBIZ
Well Description: SKR 598-25-BV-02

Job Date: 11-Aug-2013
UWI: 0504515276

Sales Order #: 900659002