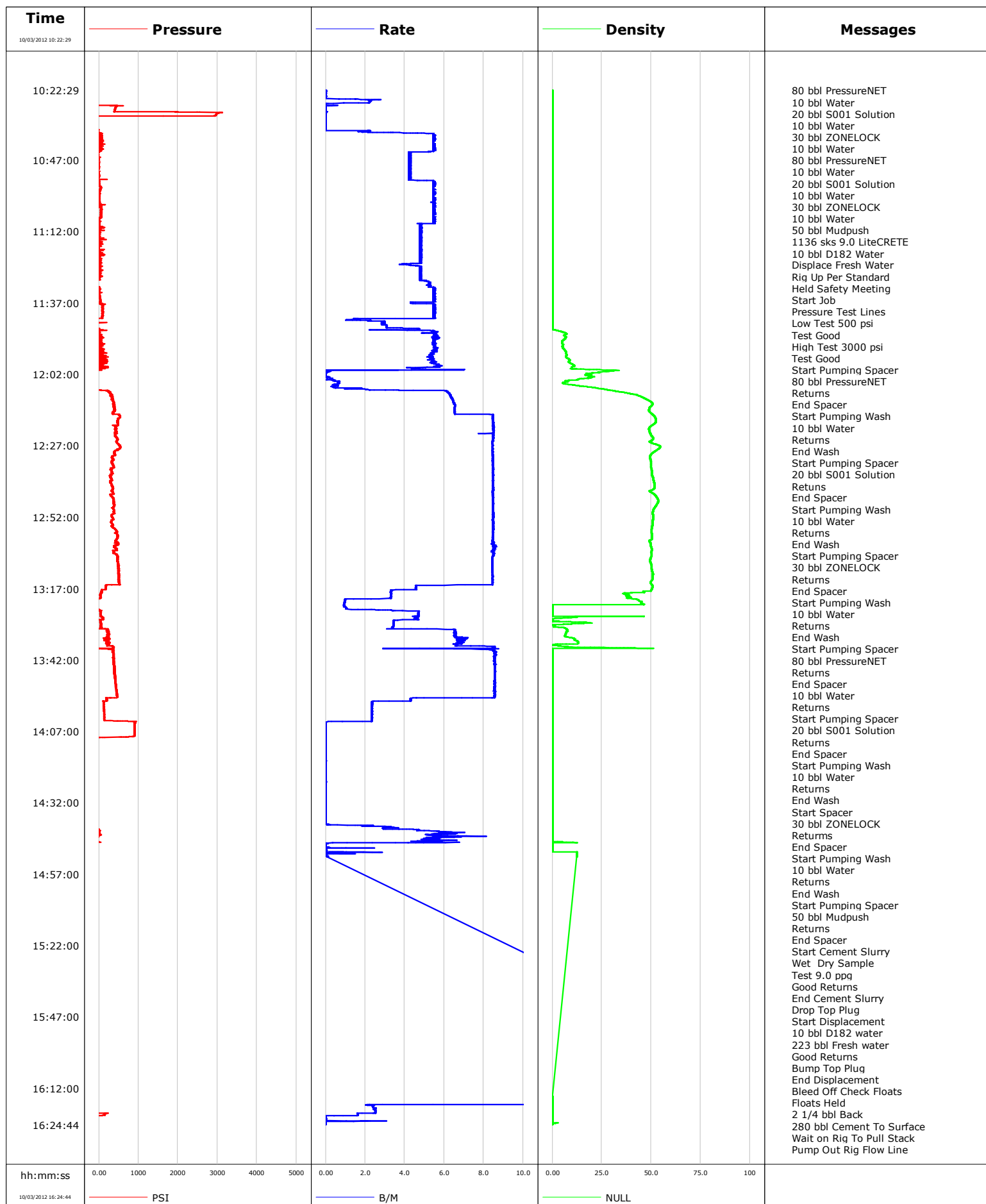


Well SGU 8509A-24
Field Story Gulch
Engineer Jordan Moreland/ Travis Willardson (pumper)
Country United States

Client Encana
SIR No.
Job Type 9 5/8 Surface
Job Date 10-03-2012

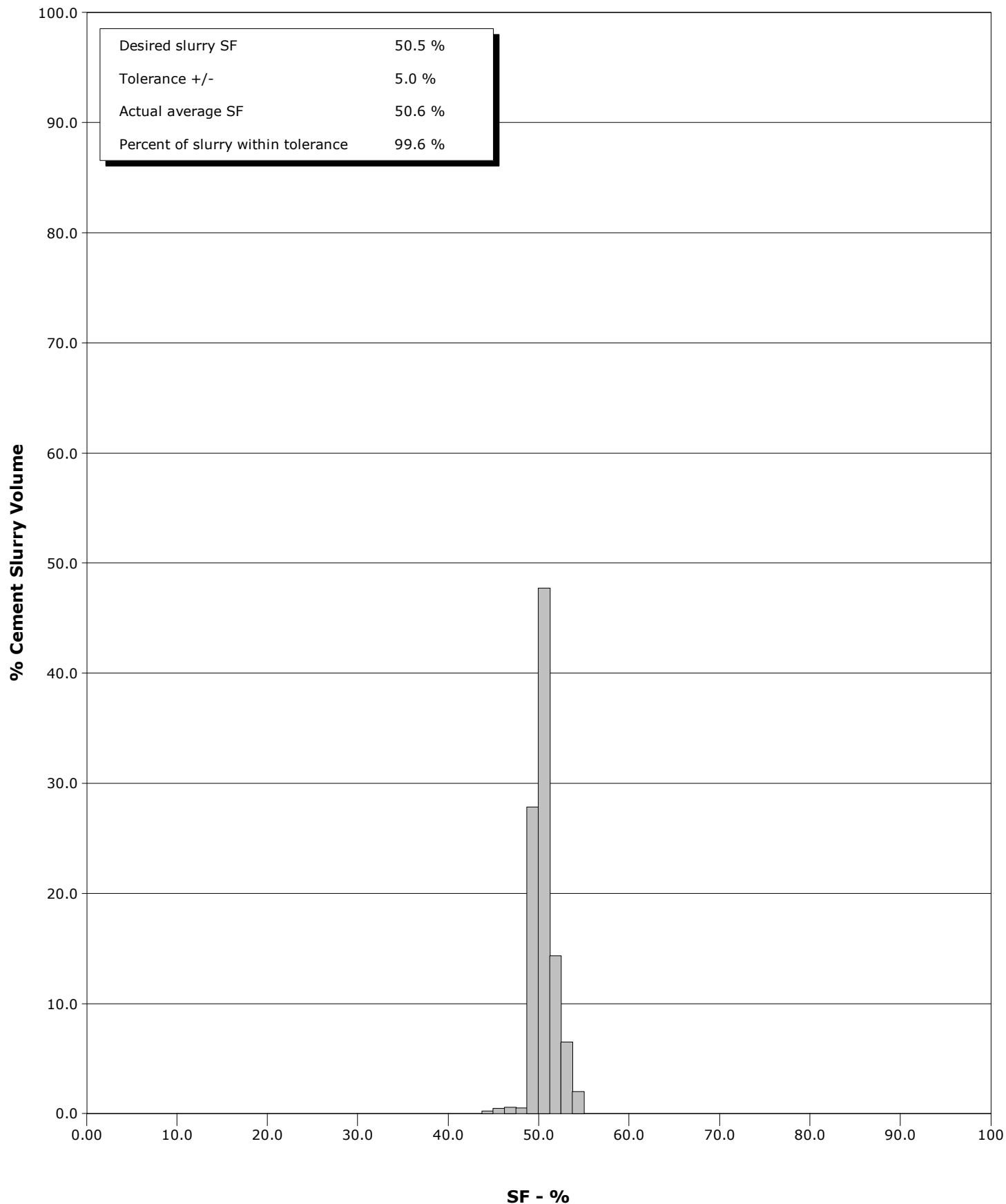


Schlumberger Cementing Qa/Qc SFM Report

Well SGU 8509A-24
Field Story Gulch
Engineer Jordan Moreland/ Travis Willardson (pumper)
Country United States

Client Encana
SIR No.
Job Type 9 5/8 Surface
Job Date 10-03-2012

Cement Slurry - 10/03/2012 12:09:41 to 10/03/2012 13:14:56





Cementing Service Report

				Customer Encana		Job Number C459-00609		
Well SGU 8509A-24			Location (legal) DL24		Schlumberger Location GCO		Job Start Oct/03/2012	
Field Story Gulch		Formation Name/Type		Deviation	Bit Size 1.8 in	Well MD 3084.0 ft		Well TVD
County Garfield		State/Province Colorado		BHP	BHST 120 degF	BHCT 96 degF	Pore Press. Gradient	
Well Master 0631333749		API/UWI						
Rig Name Patterson 330		Drilled For Gas	Service Via Land	Casing/Liner				
Offshore Zone		Well Class New	Well Type Development	Depth, ft	Size, in	Weight, lb/ft	Grade	Thread
				120.0	20.000	94.0	J55	8RD
				3056.0	9.630	36.0	K55	8RD
Drilling Fluid Type		Max. Density	Plastic Viscosity	Tubing/Drill Pipe				
Service Line Cementing		Job Type 9 5/8 Surface		Depth,	Size,	Weight,	Grade	Thread
Max. Allowed Tub. Press 3000 psi		Max. Allowed Ann. Press	WH Connection Single Cement head	Perforations/Open Hole				
Service Instructions Rate And Density Checked 80 bbl PressureNET 10 bbl Water 20 bbl S001 Solution 10 bbl Fresh Water 30 bbl ZONELOCK 10 bbl Water 80 bbl PressureNET 10 bbl Water 20 bbl S001 Solution 10 bbl Water				Top,	Bottom,		No. of Shots	Total Interval
				Treat Down Casing	Displacement 233.0 bbl	Packer Type	Packer Depth	
				Tubing Vol.	Casing Vol. 234.0 bbl	Annular Vol. 388.0 bbl	Openhole Vol. 642.0 bbl	
Casing/Tubing Secured <input checked="" type="checkbox"/>		1 Hole Vol. Circulated prior to Cement <input checked="" type="checkbox"/>		Casing Tools			Squeeze Job	
Lift Pressure 1512 psi				Shoe Type Guide			Squeeze Type	
Pipe Rotated <input type="checkbox"/>		Pipe Reciprocated <input type="checkbox"/>		Shoe Depth 3056.0 ft			Tool Type	
No. Centralizers		Top Plugs 1	Bottom Plugs	Stage Tool Type			Tool Depth	
Cement Head Type Single				Stage Tool Depth			Tail Pipe Size	
Job Scheduled For Oct/03/2012		Arrived on Location Oct/03/2012	Leave Location Oct/03/2012	Collar Type Float			Tail Pipe Depth	
				Collar Depth 3011.0 ft			Sqz. Total Vol.	
Date	Time 24-hr clock	Treating Pressure PSI	Flow Rate B/M	Density NULL	Volume BBL	Message		
10/03/2012	10:22:04					Started Acquisition		
10/03/2012	10:22:29	-157	0.0	0	0.0			
10/03/2012	10:22:30					80 bbl PressureNET		
10/03/2012	10:22:30					10 bbl Water		
10/03/2012	10:22:30					20 bbl S001 Solution		
10/03/2012	10:22:30					10 bbl Water		
10/03/2012	10:22:30					30 bbl ZONELOCK		
10/03/2012	10:22:30					10 bbl Water		
10/03/2012	10:22:30					80 bbl PressureNET		
10/03/2012	10:22:30					10 bbl Water		
10/03/2012	10:22:30					20 bbl S001 Solution		
10/03/2012	10:22:30					10 bbl Water		
10/03/2012	10:22:30					30 bbl ZONELOCK		
10/03/2012	10:22:30					10 bbl Water		
10/03/2012	10:22:30					50 bbl Mudpush		
10/03/2012	10:22:30					1136 sks 9.0 LiteCRETE		
10/03/2012	10:22:30					10 bbl D182 Water		
10/03/2012	10:22:30					Displace Fresh Water		
10/03/2012	10:22:30					Rig Up Per Standard		
10/03/2012	10:22:30					Held Safety Meeting		
10/03/2012	10:22:30	-157	0.0	0	0.0			

Well			Field		Job Start		Customer		Job Number	
SGU 8509A-24			Story Gulch		Oct/03/2012		Encana		C459-00609	
Date	Time 24-hr clock	Treating Pressure PSI	Flow Rate B/M	Density NULL	Volume BBL	Message				
10/03/2012	10:22:33	-158	0.0	0	0.0					
10/03/2012	10:22:36					Pressure Test Lines				
10/03/2012	10:22:36	-158	0.0	0	0.0					
10/03/2012	10:22:37					Low Test 500 psi				
10/03/2012	10:22:37	-158	0.0	0	0.0					
10/03/2012	10:22:38					Test Good				
10/03/2012	10:22:38					High Test 3000 psi				
10/03/2012	10:22:38					Test Good				
10/03/2012	10:22:38	-158	0.0	0	0.0					
10/03/2012	10:24:04	-158	0.0	0	0.0					
10/03/2012	10:26:04	-104	2.2	0	1.1					
10/03/2012	10:28:04	459	0.0	0	3.3					
10/03/2012	10:30:04	480	0.0	0	3.3					
10/03/2012	10:32:04	-156	0.0	0	3.4					
10/03/2012	10:34:04	-152	0.0	0	3.4					
10/03/2012	10:36:04	-20	0.0	0	3.4					
10/03/2012	10:37:23					Start Pumping Spacer				
10/03/2012	10:37:23	-17	3.4	0	5.1					
10/03/2012	10:37:25					80 bbl PressureNET				
10/03/2012	10:37:25					Returns				
10/03/2012	10:37:25	-72	3.7	0	5.2					
10/03/2012	10:38:04	56	5.4	0	8.5					
10/03/2012	10:40:04	84	5.4	0	19.5					
10/03/2012	10:42:04	21	5.4	0	30.4					
10/03/2012	10:44:04	-103	5.2	0	41.3					
10/03/2012	10:46:04	-92	4.2	0	49.8					
10/03/2012	10:48:04	-51	4.3	0	58.3					
10/03/2012	10:50:04	-85	4.2	0	66.8					
10/03/2012	10:52:04	11	4.3	0	75.3					
10/03/2012	10:53:55					End Spacer				
10/03/2012	10:53:55	-95	4.2	0	83.1					
10/03/2012	10:53:57					Start Pumping Wash				
10/03/2012	10:53:57	-45	4.2	0	83.2					
10/03/2012	10:53:59					10 bbl Water				
10/03/2012	10:53:59	-85	4.2	0	83.4					
10/03/2012	10:54:01					Returns				
10/03/2012	10:54:01	-62	4.2	0	83.5					
10/03/2012	10:54:04	-54	4.6	0	83.7					
10/03/2012	10:55:59					End Wash				
10/03/2012	10:55:59	6	5.4	0	94.1					
10/03/2012	10:56:00					Start Pumping Spacer				
10/03/2012	10:56:00	3	5.4	0	94.2					
10/03/2012	10:56:04	9	5.4	0	94.6					
10/03/2012	10:56:05					20 bbl S001 Solution				
10/03/2012	10:56:05					Retuns				
10/03/2012	10:56:05	6	5.4	0	94.7					
10/03/2012	10:58:04	24	5.4	0	105.5					
10/03/2012	10:59:42					End Spacer				
10/03/2012	10:59:42	15	5.4	0	114.4					
10/03/2012	10:59:43					Start Pumping Wash				
10/03/2012	10:59:43	15	5.4	0	114.5					
10/03/2012	10:59:44					10 bbl Water				
10/03/2012	10:59:44	15	5.4	0	114.6					
10/03/2012	10:59:45					Returns				

Well			Field		Job Start		Customer		Job Number	
SGU 8509A-24			Story Gulch		Oct/03/2012		Encana		C459-00609	
Date	Time 24-hr clock	Treating Pressure PSI	Flow Rate B/M	Density NULL	Volume BBL	Message				
10/03/2012	11:00:04	16	5.4	0	116.4					
10/03/2012	11:01:36					End Wash				
10/03/2012	11:01:36	10	5.4	0	124.8					
10/03/2012	11:01:38					Start Pumping Spacer				
10/03/2012	11:01:38	4	5.4	0	124.9					
10/03/2012	11:01:40					30 bbl ZONELOCK				
10/03/2012	11:01:40					Returns				
10/03/2012	11:01:40	7	5.4	0	125.1					
10/03/2012	11:02:04	-24	5.4	0	127.3					
10/03/2012	11:04:04	65	5.4	0	138.2					
10/03/2012	11:06:04	58	5.4	0	149.1					
10/03/2012	11:07:54					End Spacer				
10/03/2012	11:07:54					Start Pumping Wash				
10/03/2012	11:07:54	-17	5.6	0	159.2					
10/03/2012	11:07:56					10 bbl Water				
10/03/2012	11:07:56					Returns				
10/03/2012	11:07:56	0	5.4	0	159.3					
10/03/2012	11:08:04	2	5.4	0	160.1					
10/03/2012	11:09:25					End Wash				
10/03/2012	11:09:25	-60	4.8	0	167.3					
10/03/2012	11:09:29					Start Pumping Spacer				
10/03/2012	11:09:29	18	4.8	0	167.6					
10/03/2012	11:09:31					80 bbl PressureNET				
10/03/2012	11:09:31					Returns				
10/03/2012	11:09:31	-60	4.8	0	167.8					
10/03/2012	11:10:04	-37	4.8	0	170.4					
10/03/2012	11:12:04	6	4.8	0	180.0					
10/03/2012	11:14:04	-90	4.9	0	189.6					
10/03/2012	11:16:04	-70	4.8	0	199.1					
10/03/2012	11:18:04	-91	4.8	0	208.7					
10/03/2012	11:20:04	147	4.8	0	218.2					
10/03/2012	11:22:04	-66	4.9	0	227.8					
10/03/2012	11:24:04	-80	4.6	0	236.9					
10/03/2012	11:26:04	13	4.8	0	246.4					
10/03/2012	11:28:04	-9	4.8	0	256.0					
10/03/2012	11:28:50					End Spacer				
10/03/2012	11:28:50	15	4.8	0	259.6					
10/03/2012	11:28:52					10 bbl Water				
10/03/2012	11:28:52					Returns				
10/03/2012	11:28:52	10	4.9	0	259.8					
10/03/2012	11:30:04	-59	5.2	0	265.9					
10/03/2012	11:30:49					Start Pumping Spacer				
10/03/2012	11:30:49	-161	5.2	0	269.8					
10/03/2012	11:30:50					20 bbl S001 Solution				
10/03/2012	11:30:50					Returns				
10/03/2012	11:30:50	-160	5.2	0	269.9					
10/03/2012	11:32:04	16	5.4	0	276.5					
10/03/2012	11:34:04	16	5.4	0	287.4					
10/03/2012	11:34:52					End Spacer				
10/03/2012	11:34:52	25	5.4	0	291.8					
10/03/2012	11:34:53					Start Pumping Wash				
10/03/2012	11:34:53	18	5.6	0	291.9					
10/03/2012	11:34:54					10 bbl Water				
10/03/2012	11:34:54	18	5.4	0	292.0					

Well			Field		Job Start		Customer		Job Number	
SGU 8509A-24			Story Gulch		Oct/03/2012		Encana		C459-00609	
Date	Time 24-hr clock	Treating Pressure PSI	Flow Rate B/M	Density NULL	Volume BBL	Message				
10/03/2012	11:34:56	19	5.6	0	292.1					
10/03/2012	11:36:04	41	5.6	0	298.3					
10/03/2012	11:36:57					End Wash				
10/03/2012	11:36:57	-2	4.4	0	302.9					
10/03/2012	11:37:00					Start Spacer				
10/03/2012	11:37:00	-13	4.3	0	303.1					
10/03/2012	11:37:01					30 bbl ZONELOCK				
10/03/2012	11:37:01	-15	4.4	0	303.2					
10/03/2012	11:37:03					Returns				
10/03/2012	11:37:03	-13	4.3	0	303.3					
10/03/2012	11:38:04	98	5.4	0	308.7					
10/03/2012	11:40:04	97	5.6	0	319.6					
10/03/2012	11:42:04	75	5.4	0	330.5					
10/03/2012	11:42:43					End Spacer				
10/03/2012	11:42:43	-127	1.6	0	333.3					
10/03/2012	11:42:46					Start Pumping Wash				
10/03/2012	11:42:46	-124	1.6	0	333.4					
10/03/2012	11:42:47					10 bbl Water				
10/03/2012	11:42:47	-125	1.6	0	333.4					
10/03/2012	11:42:48					Returns				
10/03/2012	11:42:48	-128	1.6	0	333.5					
10/03/2012	11:44:04	-70	3.0	0	336.6					
10/03/2012	11:46:04	-7	4.7	0	343.0					
10/03/2012	11:46:27					End Wash				
10/03/2012	11:46:27	-29	2.3	1	344.7					
10/03/2012	11:46:30					Start Pumping Spacer				
10/03/2012	11:46:30	-84	3.6	2	344.9					
10/03/2012	11:46:31					50 bbl Mudpush				
10/03/2012	11:46:31	98	4.1	2	344.9					
10/03/2012	11:46:32					Returns				
10/03/2012	11:46:32	-56	4.1	2	345.0					
10/03/2012	11:48:04	-9	5.5	7	353.2					
10/03/2012	11:50:04	-63	5.5	6	364.3					
10/03/2012	11:52:04	97	5.5	5	375.3					
10/03/2012	11:54:04	74	5.7	7	386.4					
10/03/2012	11:56:04	-69	5.3	7	397.1					
10/03/2012	11:58:04	17	5.5	9	407.9					
10/03/2012	12:00:04	-13	4.7	12	418.6					
10/03/2012	12:02:04	-114	0.0	19	420.9					
10/03/2012	12:04:04	-104	0.5	9	421.2					
10/03/2012	12:06:04	-87	0.6	14	422.4					
10/03/2012	12:08:04	263	6.1	33	427.0					
10/03/2012	12:09:40					End Spacer				
10/03/2012	12:09:40	316	6.3	44	437.0					
10/03/2012	12:09:41					Start Cement Slurry				
10/03/2012	12:09:41	316	6.3	44	437.1					
10/03/2012	12:09:42					Wet Dry Sample				
10/03/2012	12:09:42					Test 9.0 ppg				
10/03/2012	12:09:42					Good Returns				
10/03/2012	12:09:42	314	6.3	44	437.2					
10/03/2012	12:10:04	330	6.4	46	439.5					
10/03/2012	12:12:04	359	6.5	50	452.4					
10/03/2012	12:14:04	392	6.5	49	465.5					
10/03/2012	12:16:04	514	8.4	51	478.6					

Well			Field		Job Start	Customer	Job Number
SGU 8509A-24			Story Gulch		Oct/03/2012	Encana	C459-00609
Date	Time 24-hr clock	Treating Pressure PSI	Flow Rate B/M	Density NULL	Volume BBL	Message	
10/03/2012	12:20:04	421	8.5	50	512.5		
10/03/2012	12:22:04	439	8.5	49	529.5		
10/03/2012	12:24:04	455	8.5	51	546.4		
10/03/2012	12:26:04	462	8.4	50	563.3		
10/03/2012	12:28:04	506	8.5	54	580.2		
10/03/2012	12:30:04	400	8.4	50	597.1		
10/03/2012	12:32:04	350	8.5	50	614.0		
10/03/2012	12:34:04	375	8.5	50	630.9		
10/03/2012	12:36:04	325	8.5	50	647.8		
10/03/2012	12:38:04	298	8.5	51	664.8		
10/03/2012	12:40:04	298	8.5	52	681.7		
10/03/2012	12:42:04	356	8.5	51	698.7		
10/03/2012	12:44:04	282	8.5	52	715.6		
10/03/2012	12:46:04	363	8.5	53	732.5		
10/03/2012	12:48:04	375	8.5	52	749.5		
10/03/2012	12:50:04	371	8.5	51	766.4		
10/03/2012	12:52:04	339	8.5	51	783.4		
10/03/2012	12:54:04	322	8.5	51	800.3		
10/03/2012	12:56:04	400	8.5	50	817.3		
10/03/2012	13:00:04	441	8.4	49	851.1		
10/03/2012	13:02:04	382	8.5	50	868.1		
10/03/2012	13:04:04	373	8.5	50	885.1		
10/03/2012	13:06:04	473	8.4	50	902.1		
10/03/2012	13:08:04	479	8.4	50	918.9		
10/03/2012	13:10:04	490	8.4	50	935.8		
10/03/2012	13:12:04	496	8.4	51	952.7		
10/03/2012	13:14:04	494	8.4	50	969.5		
10/03/2012	13:14:56					End Cement Slurry	
10/03/2012	13:14:56	525	8.4	50	976.9		
10/03/2012	13:14:59					Drop Top Plug	
10/03/2012	13:14:59					Start Displacement	
10/03/2012	13:14:59	514	8.4	50	977.3		
10/03/2012	13:16:04	174	4.6	51	985.4		
10/03/2012	13:18:04	67	3.3	46	993.7		
10/03/2012	13:20:04	53	3.3	40	1000.3		
10/03/2012	13:22:04	-55	1.0	45	1003.5		
10/03/2012	13:24:04	-62	1.1	0	1005.5		
10/03/2012	13:26:04	45	4.7	0	1013.1		
10/03/2012	13:27:53					10 bbl D182 water	
10/03/2012	13:27:53	97	4.7	0	1021.5		
10/03/2012	13:27:54					223 bbl Fresh water	
10/03/2012	13:27:54	112	4.7	0	1021.6		
10/03/2012	13:27:56					Good Returns	
10/03/2012	13:27:56	105	4.7	0	1021.8		
10/03/2012	13:28:04	42	3.5	0	1022.3		
10/03/2012	13:30:04	51	3.5	1	1029.2		
10/03/2012	13:32:04	211	6.5	8	1038.8		
10/03/2012	13:34:04	211	6.8	8	1051.9		
10/03/2012	13:36:04	264	6.8	13	1065.5		
10/03/2012	13:38:04	-20	6.1	0	1080.1		
10/03/2012	13:40:04	360	8.6	0	1096.9		
10/03/2012	13:42:04	364	8.5	0	1114.0		
10/03/2012	13:44:04	399	8.5	0	1131.1		
10/03/2012	13:46:04	400	8.6	0	1148.2		

Well			Field		Job Start		Customer		Job Number	
SGU 8509A-24			Story Gulch		Oct/03/2012		Encana		C459-00609	
Date	Time 24-hr clock	Treating Pressure PSI	Flow Rate B/M	Density NULL	Volume BBL	Message				
10/03/2012	13:50:04	418	8.6	0	1182.4					
10/03/2012	13:52:04	444	8.6	0	1199.5					
10/03/2012	13:54:04	453	8.5	0	1216.6					
10/03/2012	13:56:04	195	4.3	0	1230.3					
10/03/2012	13:58:04	117	2.3	0	1235.8					
10/03/2012	14:00:04	127	2.3	0	1240.5					
10/03/2012	14:02:04	135	2.3	0	1245.2					
10/03/2012	14:04:04	903	0.0	0	1248.8					
10/03/2012	14:05:18					Bump Top Plug				
10/03/2012	14:05:18	901	0.0	0	1248.8					
10/03/2012	14:06:04	899	0.0	0	1248.8					
10/03/2012	14:08:04	897	0.0	0	1248.8					
10/03/2012	14:10:04	-148	0.0	0	1248.9					
10/03/2012	14:12:04	-150	0.0	0	1248.9					
10/03/2012	14:14:04	-150	0.0	0	1248.9					
10/03/2012	14:16:04	-150	0.0	0	1248.9					
10/03/2012	14:18:04	-129	0.0	0	1249.0					
10/03/2012	14:20:04	-136	0.0	0	1249.0					
10/03/2012	14:22:04	-136	0.0	0	1249.0					
10/03/2012	14:23:22					End Displacement				
10/03/2012	14:23:22	-150	0.0	0	1249.0					
10/03/2012	14:23:24					Bleed Off Check Floats				
10/03/2012	14:23:24					Floats Held				
10/03/2012	14:23:24					2 1/4 bbl Back				
10/03/2012	14:23:24					280 bbl Cement To Surface				
10/03/2012	14:23:24	-150	0.0	0	1249.0					
10/03/2012	14:23:25					Wait on Rig To Pull Stack				
10/03/2012	14:23:25	-150	0.0	0	1249.0					
10/03/2012	14:24:04	-150	0.0	0	1249.0					
10/03/2012	14:26:04	-151	0.0	0	1249.1					
10/03/2012	14:28:04	-151	0.0	0	1249.1					
10/03/2012	14:30:04	-151	0.0	0	1249.1					
10/03/2012	14:32:04	-151	0.0	0	1249.2					
10/03/2012	14:34:04	-151	0.0	0	1249.2					
10/03/2012	14:35:00					Pump Out Rig Flow Line				
10/03/2012	14:35:00	-152	0.0	0	1249.2					
10/03/2012	14:36:04	-151	0.0	0	1249.2					
10/03/2012	14:38:04	-154	0.0	0	1249.2					
10/03/2012	14:40:04	-102	2.4	0	1249.8					
10/03/2012	14:42:04	8	6.0	0	1257.2					
10/03/2012	14:44:04	-41	6.4	0	1269.4					
10/03/2012	14:46:04	-140	1.1	12	1280.0					
10/03/2012	14:48:04	-143	0.0	0	1280.2					
10/03/2012	14:50:04	-145	0.0	12	1280.7					
10/03/2012	16:16:04	-107	25.0	0	1312.0					
10/03/2012	16:18:04	-128	2.4	0	1353.3					
10/03/2012	16:20:04	-130	2.5	0	1358.3					
10/03/2012	16:22:04	-158	0.0	0	1361.4					
10/03/2012	16:24:04	-154	0.0	0	1361.8					
10/03/2012	16:24:38					Pump Out Parisite Line				
10/03/2012	16:24:38					10 bbl Sugar Water				
10/03/2012	16:24:38	-95	0.0	0	1361.8					
10/03/2012	16:24:39					Rig Down				
10/03/2012	16:24:39	-94	0.0	0	1361.8					

Well SGU 8509A-24			Field Story Gulch		Job Start Oct/03/2012	Customer Encana		Job Number C459-00609
Date	Time 24-hr clock	Treating Pressure PSI	Flow Rate B/M	Density NULL	Volume BBL	Message		
10/03/2012	16:24:41	-96	0.0	0	1361.8			

Post Job Summary

Average Pump Rates, bbl/min					Volume of Fluid Injected, bbl					
Slurry 6.3	N2	Mud 0.0	Maximum Rate 25.0		Total Slurry 1361.8	Mud 0.0	Spacer 373.7	N2		
Treating Pressure Summary, psi					Breakdown Fluid					
Maximum 3130	Final -97	Average 302	Bump Plug to	Breakdown	Type		Volume		Density	
Avg. N2 Percent		Designed Slurry Volume		Displacement 271.6 bbl		Mix Water Temp		Cement Circulated to Surface? <input checked="" type="checkbox"/>		Volume
								Washed Thru Perfs <input type="checkbox"/>		To
Customer or Authorized Representative Randy Burke				Schlumberger Supervisor Jordan Moreland/ Travis Willardson (pumper)			Circulation Lost <input type="checkbox"/>		Job Completed <input checked="" type="checkbox"/>	
							-		-	



Service Order #:	
Date:	Oct/03/2012
Operating Time:	0.0
Client Rep:	Encana
Schlumberger Engineer:	Jordan Moreland/ Travis Willardson (pumper)
Schlumberger FSM:	

To be completed by Company Rep. Please answer Y (Yes) or N (No) and add any comments below.

4	Evaluation					
4a	Main job objective achieved with no consequential non-productive time	10	yes <input checked="" type="checkbox"/>	no <input type="checkbox"/>		10
					Sub-total	100%

Comments: (Please include a brief explanation for a "NO" response and summarize any innovations attempted on this well.)

Client:	Schlumberger:
Client Signature:	Schlumberger Signature: