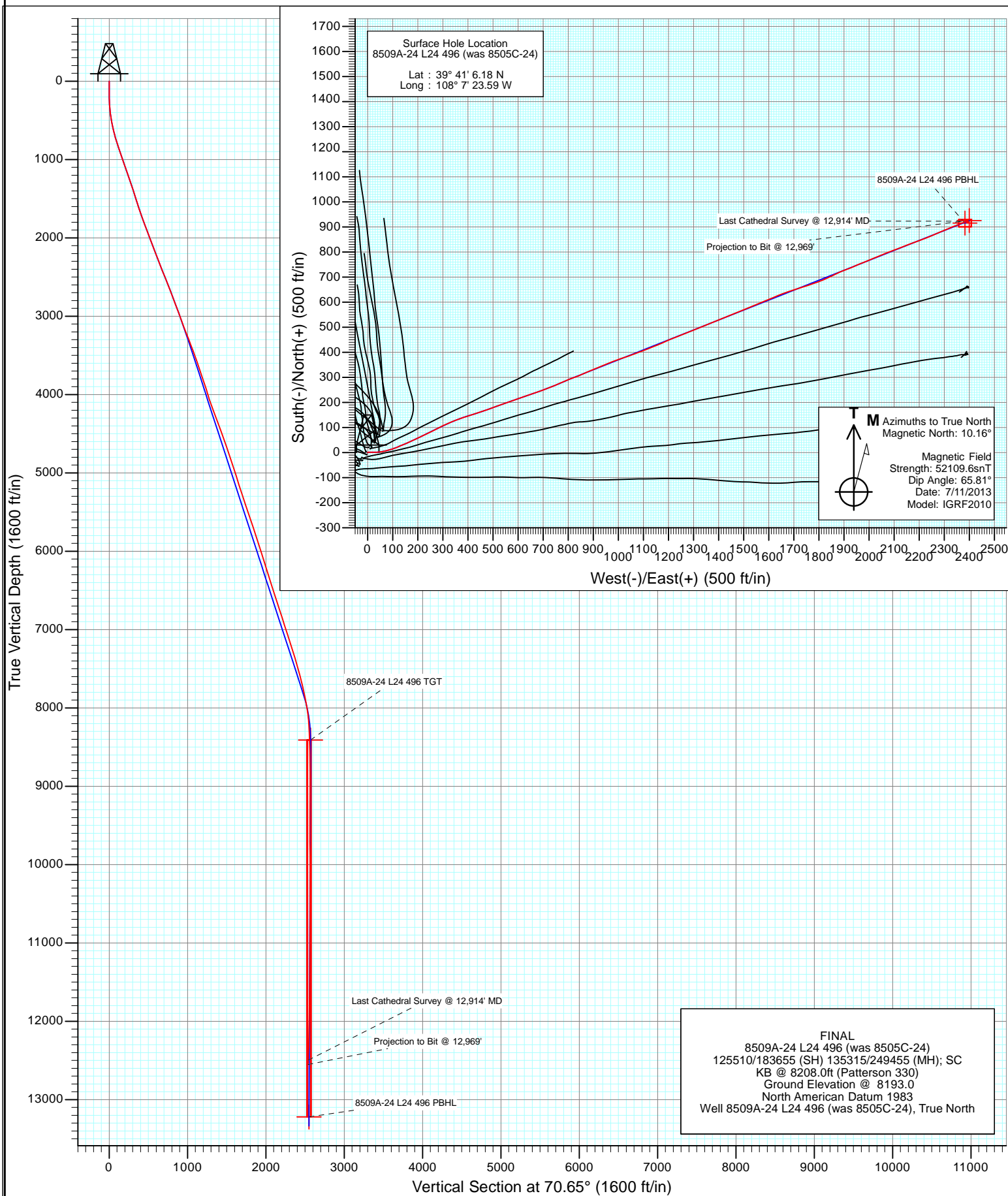


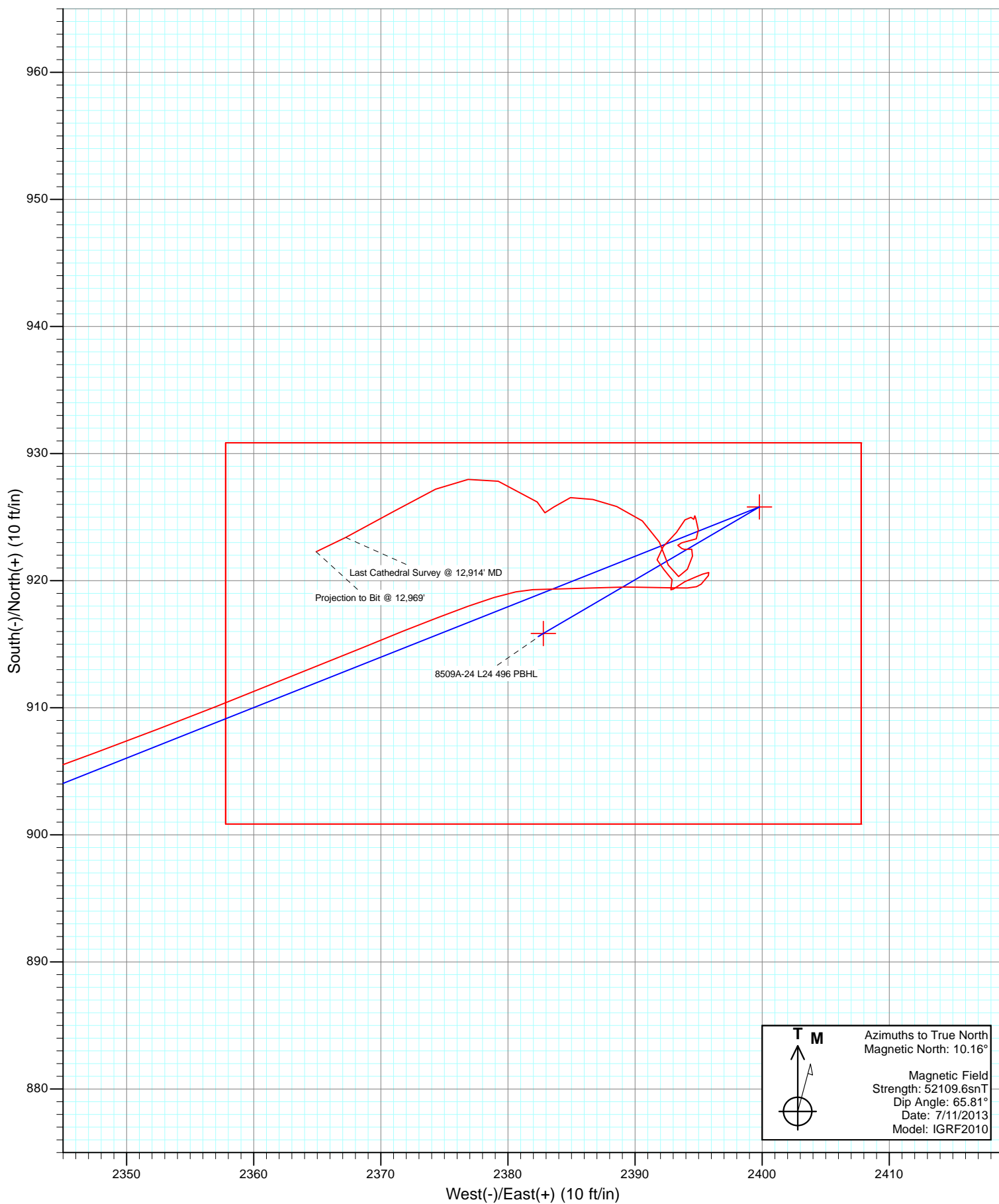


Project: Story Gulch  
Site: L24 496  
Well: 8509A-24 L24 496 (was 8505C-24)  
Wellbore: DD  
Design: FINAL





Project: Story Gulch  
Site: L24 496  
Well: 8509A-24 L24 496 (was 8505C-24)  
Wellbore: DD  
Design: FINAL



# Cathedral Energy Services

## Survey Report

<b>Company:</b>	EnCana Oil & Gas (USA) Inc	<b>Local Co-ordinate Reference:</b>	Well 8509A-24 L24 496 (was 8505C-24)
<b>Project:</b>	Story Gulch	<b>TVD Reference:</b>	KB @ 8208.0ft (Patterson 330)
<b>Site:</b>	L24 496	<b>MD Reference:</b>	KB @ 8208.0ft (Patterson 330)
<b>Well:</b>	8509A-24 L24 496 (was 8505C-24)	<b>North Reference:</b>	True
<b>Wellbore:</b>	DD	<b>Survey Calculation Method:</b>	Minimum Curvature
<b>Design:</b>	FINAL	<b>Database:</b>	USA EDM 5000 Multi Users DB

<b>Project</b>	Story Gulch		
<b>Map System:</b>	US State Plane 1983	<b>System Datum:</b>	Mean Sea Level
<b>Geo Datum:</b>	North American Datum 1983		
<b>Map Zone:</b>	Colorado Central Zone		

<b>Site</b>	L24 496			
<b>Site Position:</b>		<b>Northing:</b>	1,685,024.52 ft	<b>Latitude:</b> 39° 41' 5.72 N
<b>From:</b>	Lat/Long	<b>Easting:</b>	2,261,789.15 ft	<b>Longitude:</b> 108° 7' 23.99 W
<b>Position Uncertainty:</b>	0.0 ft	<b>Slot Radius:</b>	13.200 in	<b>Grid Convergence:</b> -1.65 °

<b>Well</b>	8509A-24 L24 496 (was 8505C-24)			
<b>Well Position</b>	<b>+N/-S</b>	0.0 ft	<b>Northing:</b>	1,685,070.12 ft
	<b>+E/-W</b>	0.0 ft	<b>Easting:</b>	2,261,821.75 ft
<b>Position Uncertainty</b>	0.0 ft	<b>Wellhead Elevation:</b>	ft	<b>Ground Level:</b> 8,193.0 ft

<b>Wellbore</b>	DD				
<b>Magnetics</b>	<b>Model Name</b>	<b>Sample Date</b>	<b>Declination (°)</b>	<b>Dip Angle (°)</b>	<b>Field Strength (nT)</b>
	IGRF2010	7/11/2013	10.17	65.81	52,110

<b>Design</b>	FINAL			
<b>Audit Notes:</b>				
<b>Version:</b>	1.0	<b>Phase:</b>	ACTUAL	<b>Tie On Depth:</b> 0.0
<b>Vertical Section:</b>	<b>Depth From (TVD)</b>	<b>+N/-S (ft)</b>	<b>+E/-W (ft)</b>	<b>Direction (°)</b>
	0.0	0.0	0.0	70.65

<b>Survey Program</b>	<b>Date</b>	7/25/2013		
<b>From (ft)</b>	<b>To (ft)</b>	<b>Survey (Wellbore)</b>	<b>Tool Name</b>	<b>Description</b>
154.0	12,969.0	Survey #1 (DD)	MWD	Geolink MWD

<b>Survey</b>									
<b>Measured Depth (ft)</b>	<b>Inclination (°)</b>	<b>Azimuth (°)</b>	<b>Vertical Depth (ft)</b>	<b>+N/-S (ft)</b>	<b>+E/-W (ft)</b>	<b>Vertical Section (ft)</b>	<b>Dogleg Rate (°/100ft)</b>	<b>Build Rate (°/100ft)</b>	<b>Formations / Comments</b>
0.0	0.00	0.00	0.0	0.0	0.0	0.0	0.00	0.00	
154.0	0.50	29.40	154.0	0.6	0.3	0.5	0.32	0.32	
184.0	0.70	44.10	184.0	0.8	0.5	0.8	0.84	0.67	
215.0	1.40	69.90	215.0	1.1	1.0	1.3	2.67	2.26	
245.0	1.90	74.60	245.0	1.4	1.8	2.2	1.73	1.67	
276.0	3.00	84.50	275.9	1.6	3.1	3.5	3.79	3.55	
306.0	4.10	90.70	305.9	1.6	5.0	5.2	3.88	3.67	
337.0	5.00	90.00	336.8	1.6	7.4	7.6	2.91	2.90	
383.0	6.60	91.10	382.6	1.6	12.1	11.9	3.49	3.48	
429.0	8.00	90.20	428.2	1.5	17.9	17.4	3.05	3.04	
475.0	9.60	89.60	473.6	1.5	25.0	24.1	3.48	3.48	
520.0	10.90	88.50	517.9	1.7	33.0	31.7	2.92	2.89	
566.0	12.30	85.60	563.0	2.1	42.2	40.5	3.30	3.04	

# Cathedral Energy Services

## Survey Report

<b>Company:</b>	EnCana Oil & Gas (USA) Inc	<b>Local Co-ordinate Reference:</b>	Well 8509A-24 L24 496 (was 8505C-24)
<b>Project:</b>	Story Gulch	<b>TVD Reference:</b>	KB @ 8208.0ft (Patterson 330)
<b>Site:</b>	L24 496	<b>MD Reference:</b>	KB @ 8208.0ft (Patterson 330)
<b>Well:</b>	8509A-24 L24 496 (was 8505C-24)	<b>North Reference:</b>	True
<b>Wellbore:</b>	DD	<b>Survey Calculation Method:</b>	Minimum Curvature
<b>Design:</b>	FINAL	<b>Database:</b>	USA EDM 5000 Multi Users DB

Survey									
Measured Depth (ft)	Inclination (°)	Azimuth (°)	Vertical Depth (ft)	+N/-S (ft)	+E/-W (ft)	Vertical Section (ft)	Dogleg Rate (°/100ft)	Build Rate (°/100ft)	Formations / Comments
612.0	13.40	82.80	607.8	3.2	52.4	50.5	2.75	2.39	
658.0	14.50	78.30	652.5	5.0	63.3	61.4	3.36	2.39	
704.0	15.50	75.00	696.9	7.8	74.9	73.2	2.86	2.17	
749.0	16.90	73.60	740.1	11.2	87.0	85.8	3.23	3.11	
795.0	17.40	72.70	784.1	15.1	100.0	99.3	1.23	1.09	
841.0	18.20	66.90	827.9	20.0	113.1	113.4	4.23	1.74	
887.0	18.80	67.60	871.5	25.6	126.6	127.9	1.39	1.30	
978.0	18.90	67.00	957.6	37.0	153.7	157.3	0.24	0.11	
1,070.0	18.80	63.80	1,044.7	49.3	180.7	186.9	1.13	-0.11	
1,162.0	19.20	66.40	1,131.7	61.9	207.9	216.7	1.02	0.43	
1,253.0	19.60	64.00	1,217.5	74.6	235.3	246.8	0.98	0.44	
1,345.0	18.90	63.10	1,304.4	88.1	262.5	276.9	0.83	-0.76	
1,436.0	18.40	63.10	1,390.6	101.3	288.4	305.7	0.55	-0.55	
1,528.0	17.60	65.40	1,478.1	113.7	314.0	334.0	1.16	-0.87	
1,616.0	17.30	67.70	1,562.0	124.2	338.2	360.3	0.85	-0.34	
1,708.0	18.70	69.80	1,649.5	134.4	364.7	388.7	1.68	1.52	
1,799.0	19.80	72.70	1,735.4	144.1	393.1	418.7	1.60	1.21	
1,891.0	20.30	72.80	1,821.9	153.4	423.3	450.2	0.54	0.54	
1,982.0	20.70	71.10	1,907.1	163.3	453.6	482.1	0.79	0.44	
2,074.0	20.90	70.40	1,993.1	174.1	484.4	514.7	0.35	0.22	
2,166.0	21.00	70.00	2,079.0	185.2	515.4	547.6	0.19	0.11	
2,257.0	21.10	69.90	2,164.0	196.4	546.1	580.3	0.12	0.11	
2,349.0	21.10	72.00	2,249.8	207.2	577.4	613.4	0.82	0.00	
2,532.0	21.50	70.60	2,420.3	228.5	640.3	679.9	0.35	0.22	
2,624.0	21.60	69.50	2,505.9	240.1	672.1	713.7	0.45	0.11	
2,715.0	21.70	71.40	2,590.4	251.3	703.7	747.2	0.78	0.11	
2,807.0	21.30	67.00	2,676.0	263.3	735.2	780.9	1.81	-0.43	
2,899.0	20.40	66.10	2,762.0	276.3	765.3	813.6	1.04	-0.98	
2,990.0	20.70	67.80	2,847.2	288.8	794.7	845.5	0.73	0.33	
3,024.0	20.90	68.40	2,879.0	293.3	805.9	857.5	0.86	0.59	
3,088.0	20.70	70.30	2,938.8	301.3	827.1	880.2	1.10	-0.31	
3,179.0	19.70	66.40	3,024.2	312.9	856.3	911.6	1.84	-1.10	
3,271.0	20.50	67.10	3,110.6	325.3	885.4	943.2	0.91	0.87	
3,363.0	22.10	67.70	3,196.4	338.2	916.2	976.5	1.76	1.74	
3,455.0	21.10	67.70	3,281.9	351.0	947.6	1,010.3	1.09	-1.09	
3,547.0	19.90	68.10	3,368.1	363.2	977.4	1,042.5	1.31	-1.30	
3,638.0	21.10	70.60	3,453.3	374.4	1,007.2	1,074.4	1.63	1.32	
3,730.0	20.20	71.60	3,539.4	384.9	1,037.9	1,106.8	1.05	-0.98	
3,822.0	18.50	70.40	3,626.2	394.8	1,066.7	1,137.3	1.90	-1.85	
3,914.0	17.70	69.10	3,713.6	404.7	1,093.6	1,165.9	0.97	-0.87	
4,006.0	18.50	67.70	3,801.1	415.2	1,120.1	1,194.4	0.99	0.87	
4,098.0	19.20	69.00	3,888.2	426.2	1,147.8	1,224.1	0.89	0.76	
4,189.0	16.70	65.50	3,974.7	437.0	1,173.6	1,252.1	2.99	-2.75	
4,281.0	18.10	66.20	4,062.5	448.2	1,198.7	1,279.5	1.54	1.52	
4,373.0	20.30	68.20	4,149.4	459.9	1,226.6	1,309.7	2.50	2.39	
4,465.0	20.10	68.40	4,235.7	471.7	1,256.2	1,341.5	0.23	-0.22	
4,557.0	20.20	69.50	4,322.1	483.0	1,285.7	1,373.1	0.43	0.11	
4,649.0	21.10	68.00	4,408.2	494.8	1,316.0	1,405.6	1.13	0.98	
4,741.0	20.20	67.60	4,494.3	507.1	1,346.0	1,438.0	0.99	-0.98	
4,833.0	18.80	68.10	4,581.0	518.6	1,374.4	1,468.6	1.53	-1.52	
4,925.0	19.20	67.20	4,668.0	530.0	1,402.1	1,498.6	0.54	0.43	
5,016.0	17.80	67.30	4,754.3	541.2	1,428.8	1,527.4	1.54	-1.54	
5,108.0	19.20	68.80	4,841.5	552.1	1,455.8	1,556.5	1.61	1.52	

# Cathedral Energy Services

## Survey Report

<b>Company:</b>	EnCana Oil & Gas (USA) Inc	<b>Local Co-ordinate Reference:</b>	Well 8509A-24 L24 496 (was 8505C-24)
<b>Project:</b>	Story Gulch	<b>TVD Reference:</b>	KB @ 8208.0ft (Patterson 330)
<b>Site:</b>	L24 496	<b>MD Reference:</b>	KB @ 8208.0ft (Patterson 330)
<b>Well:</b>	8509A-24 L24 496 (was 8505C-24)	<b>North Reference:</b>	True
<b>Wellbore:</b>	DD	<b>Survey Calculation Method:</b>	Minimum Curvature
<b>Design:</b>	FINAL	<b>Database:</b>	USA EDM 5000 Multi Users DB

Survey									
Measured Depth (ft)	Inclination (°)	Azimuth (°)	Vertical Depth (ft)	+N/-S (ft)	+E/-W (ft)	Vertical Section (ft)	Dogleg Rate (°/100ft)	Build Rate (°/100ft)	Formations / Comments
5,200.0	18.20	68.40	4,928.7	562.9	1,483.3	1,586.0	1.10	-1.09	
5,292.0	17.10	67.60	5,016.3	573.3	1,509.2	1,613.9	1.22	-1.20	
5,384.0	17.50	66.40	5,104.2	584.0	1,534.4	1,641.2	0.58	0.43	
5,476.0	18.70	67.30	5,191.6	595.2	1,560.6	1,669.7	1.34	1.30	
5,568.0	18.20	67.50	5,278.9	606.4	1,587.5	1,698.8	0.55	-0.54	
5,660.0	18.50	68.00	5,366.2	617.4	1,614.3	1,727.7	0.37	0.33	
5,752.0	17.50	67.80	5,453.7	628.1	1,640.7	1,756.1	1.09	-1.09	
5,843.0	19.20	71.00	5,540.1	638.1	1,667.5	1,784.7	2.17	1.87	
5,935.0	18.20	71.50	5,627.2	647.6	1,695.4	1,814.2	1.10	-1.09	
6,027.0	19.60	71.90	5,714.3	657.0	1,723.7	1,844.0	1.53	1.52	
6,119.0	18.50	73.20	5,801.2	666.0	1,752.3	1,874.0	1.28	-1.20	
6,211.0	18.10	69.50	5,888.6	675.2	1,779.7	1,902.9	1.34	-0.43	
6,303.0	17.20	70.00	5,976.2	684.8	1,805.9	1,930.8	0.99	-0.98	
6,395.0	16.00	65.20	6,064.4	694.8	1,830.2	1,957.0	1.98	-1.30	
6,487.0	17.50	64.10	6,152.5	706.2	1,854.1	1,983.4	1.67	1.63	
6,578.0	17.20	64.50	6,239.4	717.9	1,878.6	2,010.3	0.35	-0.33	
6,670.0	18.50	70.10	6,326.9	728.8	1,904.6	2,038.5	2.34	1.41	
6,762.0	18.50	67.40	6,414.2	739.4	1,931.8	2,067.6	0.93	0.00	
6,854.0	17.60	66.20	6,501.7	750.6	1,958.0	2,096.1	1.06	-0.98	
6,946.0	18.20	68.40	6,589.2	761.5	1,984.1	2,124.3	0.98	0.65	
7,038.0	17.80	67.30	6,676.7	772.2	2,010.4	2,152.7	0.57	-0.43	
7,130.0	17.60	67.40	6,764.3	783.0	2,036.2	2,180.6	0.22	-0.22	
7,222.0	17.60	69.10	6,852.0	793.3	2,062.1	2,208.4	0.56	0.00	
7,314.0	18.30	68.40	6,939.6	803.6	2,088.5	2,236.7	0.80	0.76	
7,405.0	17.20	69.60	7,026.2	813.5	2,114.4	2,264.5	1.27	-1.21	
7,497.0	18.60	68.50	7,113.8	823.6	2,140.8	2,292.7	1.57	1.52	
7,589.0	17.90	69.50	7,201.1	833.9	2,167.7	2,321.5	0.83	-0.76	
7,681.0	17.40	69.60	7,288.8	843.7	2,193.8	2,349.4	0.54	-0.54	
7,773.0	16.30	70.50	7,376.9	852.8	2,218.9	2,376.1	1.23	-1.20	
7,865.0	15.50	65.60	7,465.3	862.2	2,242.2	2,401.3	1.70	-0.87	
7,957.0	14.70	66.90	7,554.2	871.8	2,264.2	2,425.1	0.94	-0.87	
8,049.0	14.30	67.50	7,643.2	880.8	2,285.4	2,448.1	0.46	-0.43	
8,141.0	13.30	67.70	7,732.6	889.1	2,305.7	2,470.1	1.09	-1.09	
8,233.0	12.90	65.70	7,822.2	897.4	2,324.8	2,490.9	0.66	-0.43	
8,325.0	10.90	70.10	7,912.2	904.6	2,342.4	2,509.8	2.39	-2.17	
8,416.0	8.90	68.40	8,001.8	910.1	2,357.0	2,525.4	2.22	-2.20	
8,508.0	6.70	67.70	8,093.0	914.7	2,368.6	2,537.9	2.39	-2.39	
8,600.0	4.40	69.90	8,184.5	918.0	2,376.9	2,546.8	2.51	-2.50	
8,692.0	2.20	87.10	8,276.4	919.3	2,382.0	2,552.0	2.60	-2.39	
8,826.2	2.35	88.90	8,410.5	919.5	2,387.3	2,557.1	0.12	0.11	8509A-24 L24 496 TGT
8,875.0	2.40	89.50	8,459.2	919.5	2,389.3	2,559.0	0.12	0.11	
8,967.0	2.30	92.80	8,551.2	919.4	2,393.1	2,562.5	0.18	-0.11	
9,059.0	0.60	38.00	8,643.1	919.7	2,395.2	2,564.7	2.19	-1.85	
9,151.0	0.50	41.20	8,735.1	920.4	2,395.8	2,565.4	0.11	-0.11	
9,243.0	0.30	254.90	8,827.1	920.6	2,395.8	2,565.5	0.83	-0.22	
9,335.0	0.30	254.90	8,919.1	920.5	2,395.3	2,565.0	0.00	0.00	
9,427.0	0.50	243.30	9,011.1	920.3	2,394.7	2,564.4	0.23	0.22	
9,519.0	0.60	249.90	9,103.1	919.9	2,393.9	2,563.5	0.13	0.11	
9,611.0	0.80	228.20	9,195.1	919.3	2,393.0	2,562.4	0.36	0.22	
9,703.0	0.60	38.90	9,287.1	919.3	2,392.8	2,562.3	1.52	-0.22	
9,794.0	0.60	333.70	9,378.1	920.1	2,392.9	2,562.6	0.71	0.00	
9,889.0	0.70	311.30	9,473.1	920.9	2,392.3	2,562.3	0.29	0.11	
9,978.0	0.50	344.30	9,562.1	921.6	2,391.7	2,562.0	0.44	-0.22	

# Cathedral Energy Services

## Survey Report

<b>Company:</b>	EnCana Oil & Gas (USA) Inc	<b>Local Co-ordinate Reference:</b>	Well 8509A-24 L24 496 (was 8505C-24)
<b>Project:</b>	Story Gulch	<b>TVD Reference:</b>	KB @ 8208.0ft (Patterson 330)
<b>Site:</b>	L24 496	<b>MD Reference:</b>	KB @ 8208.0ft (Patterson 330)
<b>Well:</b>	8509A-24 L24 496 (was 8505C-24)	<b>North Reference:</b>	True
<b>Wellbore:</b>	DD	<b>Survey Calculation Method:</b>	Minimum Curvature
<b>Design:</b>	FINAL	<b>Database:</b>	USA EDM 5000 Multi Users DB

Survey									
Measured Depth (ft)	Inclination (°)	Azimuth (°)	Vertical Depth (ft)	+N/-S (ft)	+E/-W (ft)	Vertical Section (ft)	Dogleg Rate (°/100ft)	Build Rate (°/100ft)	Formations / Comments
10,070.0	1.10	42.10	9,654.1	922.7	2,392.2	2,562.8	1.02	0.65	
10,162.0	0.80	44.00	9,746.1	923.8	2,393.3	2,564.2	0.33	-0.33	
10,254.0	0.70	23.10	9,838.1	924.8	2,393.9	2,565.1	0.31	-0.11	
10,346.0	0.50	141.60	9,930.1	925.0	2,394.4	2,565.6	1.13	-0.22	
10,437.0	0.20	350.80	10,021.1	924.8	2,394.6	2,565.8	0.75	-0.33	
10,529.0	0.20	41.10	10,113.1	925.1	2,394.7	2,566.0	0.18	0.00	
10,621.0	0.40	184.90	10,205.1	924.9	2,394.8	2,566.0	0.62	0.22	
10,713.0	0.80	158.90	10,297.1	924.0	2,395.0	2,565.9	0.52	0.43	
10,805.0	0.50	255.80	10,389.1	923.3	2,394.8	2,565.5	1.08	-0.33	
10,897.0	1.00	254.40	10,481.1	923.0	2,393.7	2,564.3	0.54	0.54	
10,989.0	0.60	87.30	10,573.0	922.8	2,393.4	2,563.9	1.73	-0.43	
11,081.0	0.40	211.50	10,665.0	922.5	2,393.7	2,564.1	0.97	-0.22	
11,172.0	0.50	59.70	10,756.0	922.5	2,393.9	2,564.3	0.96	0.11	
11,264.0	0.40	126.50	10,848.0	922.5	2,394.5	2,564.9	0.55	-0.11	
11,356.0	0.50	209.90	10,940.0	921.9	2,394.5	2,564.7	0.66	0.11	
11,447.0	0.90	197.00	11,031.0	920.9	2,394.1	2,564.0	0.47	0.44	
11,539.0	0.60	282.50	11,123.0	920.3	2,393.4	2,563.2	1.13	-0.33	
11,631.0	1.10	336.40	11,215.0	921.2	2,392.6	2,562.7	0.97	0.54	
11,723.0	1.30	340.90	11,307.0	923.0	2,391.9	2,562.6	0.24	0.22	
11,815.0	1.50	304.70	11,399.0	924.7	2,390.6	2,561.9	0.97	0.22	
11,907.0	1.40	293.40	11,490.9	925.8	2,388.6	2,560.4	0.33	-0.11	
11,998.0	1.10	278.00	11,581.9	926.4	2,386.7	2,558.8	0.49	-0.33	
12,090.0	1.10	271.30	11,673.9	926.5	2,384.9	2,557.2	0.14	0.00	
12,182.0	1.10	210.00	11,765.9	925.8	2,383.6	2,555.7	1.22	0.00	
12,274.0	0.50	321.90	11,857.9	925.3	2,382.9	2,554.9	1.49	-0.65	
12,366.0	0.80	325.80	11,949.9	926.2	2,382.3	2,554.6	0.33	0.33	
12,550.0	1.50	283.80	12,133.8	927.8	2,379.2	2,552.3	0.57	0.38	
12,642.0	1.50	262.90	12,225.8	928.0	2,376.9	2,550.1	0.59	0.00	
12,733.0	1.90	245.80	12,316.8	927.2	2,374.3	2,547.4	0.71	0.44	
12,825.0	2.80	239.30	12,408.7	925.4	2,371.0	2,543.7	1.02	0.98	
12,914.0	2.70	244.10	12,497.6	923.4	2,367.2	2,539.5	0.28	-0.11	Last Cathedral Survey @ 12,914' MD
12,969.0	2.70	244.10	12,552.5	922.3	2,364.9	2,536.9	0.00	0.00	Projection to Bit @ 12,969' - 8509A-24 L24 496 F

# Cathedral Energy Services

## Survey Report

<b>Company:</b>	EnCana Oil & Gas (USA) Inc	<b>Local Co-ordinate Reference:</b>	Well 8509A-24 L24 496 (was 8505C-24)
<b>Project:</b>	Story Gulch	<b>TVD Reference:</b>	KB @ 8208.0ft (Patterson 330)
<b>Site:</b>	L24 496	<b>MD Reference:</b>	KB @ 8208.0ft (Patterson 330)
<b>Well:</b>	8509A-24 L24 496 (was 8505C-24)	<b>North Reference:</b>	True
<b>Wellbore:</b>	DD	<b>Survey Calculation Method:</b>	Minimum Curvature
<b>Design:</b>	FINAL	<b>Database:</b>	USA EDM 5000 Multi Users DB

Targets									
Target Name	Dip Angle	Dip Dir.	TVD	+N/-S	+E/-W	Northing	Easting	Latitude	Longitude
- hit/miss target	(°)	(°)	(ft)	(ft)	(ft)	(ft)	(ft)		
- Shape									
8509A-24 L24 496 TGT	0.00	0.00	8,410.0	925.8	2,399.8	1,685,926.26	2,264,247.28	39° 41' 15.33 N	108° 6' 52.89 W
- actual wellpath misses target center by 14.0ft at 8826.2ft MD (8410.5 TVD, 919.5 N, 2387.3 E)									
- Point									
8509A-24 L24 496 PBHI	0.00	0.00	13,221.0	915.8	2,382.8	1,685,916.79	2,264,230.00	39° 41' 15.23 N	108° 6' 53.11 W
- actual wellpath misses target center by 668.7ft at 12969.0ft MD (12552.5 TVD, 922.3 N, 2364.9 E)									
- Rectangle (sides W30.0 H50.0 D0.0)									

Design Annotations				
Measured Depth	Vertical Depth	Local Coordinates		Comment
(ft)	(ft)	+N/-S (ft)	+E/-W (ft)	
12,914.0	12,497.6	923.4	2,367.2	Last Cathedral Survey @ 12,914' MD
12,969.0	12,552.5	922.3	2,364.9	Projection to Bit @ 12,969'

Checked By: \_\_\_\_\_ Approved By: \_\_\_\_\_ Date: \_\_\_\_\_