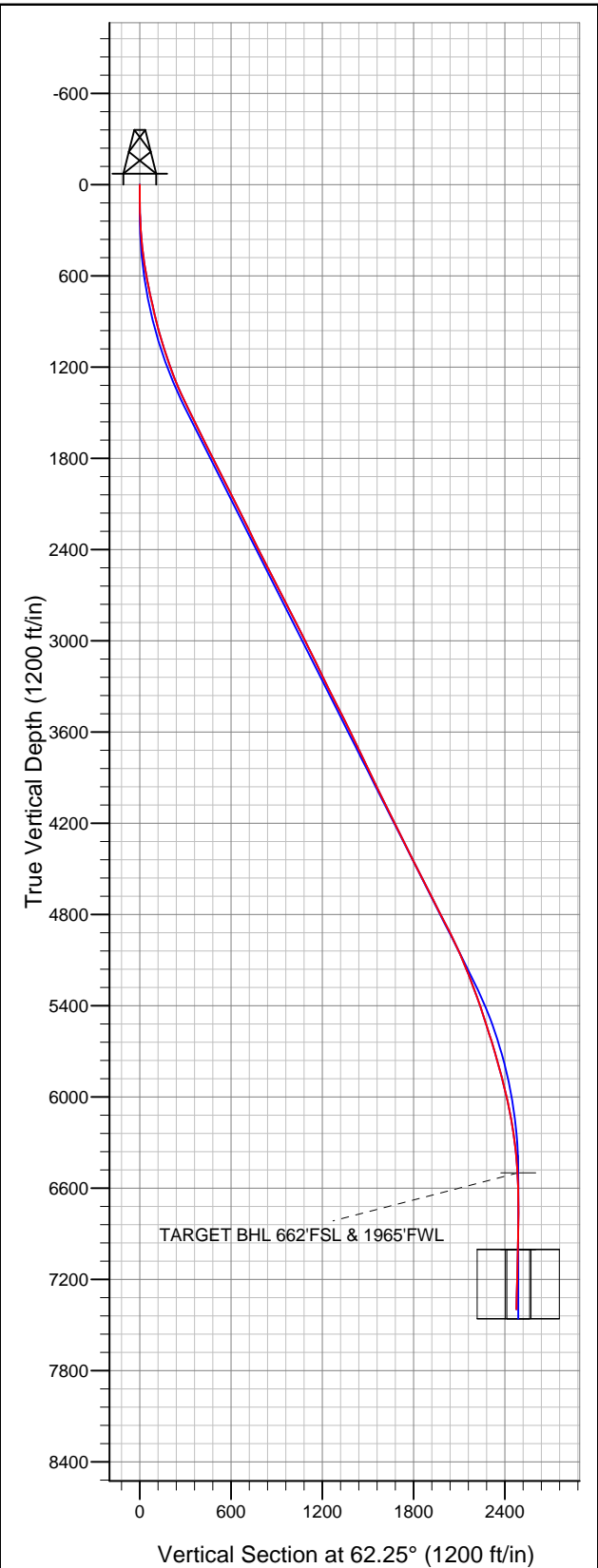
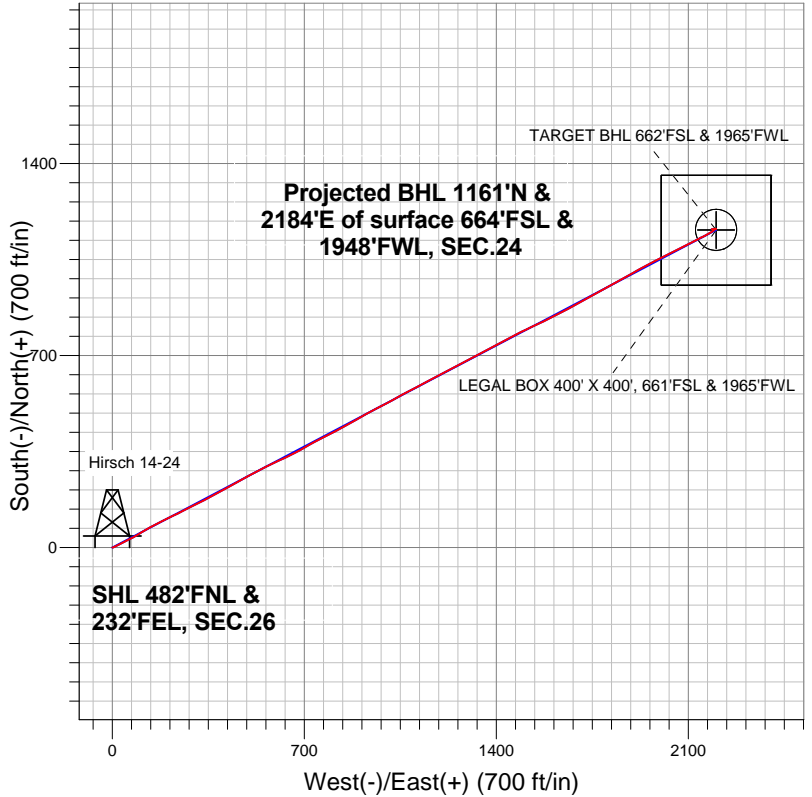


Well Name: Hirsch 14-24

Surface Location: Hirsch/Casa Loma 10 Pad Sec.26-T7N-R67W
 North American Datum 1983 US State Plane 1983 Colorado Northern Zone
 Ground Elevation: 4953.0
 +N/-S 0.0 +E/-W 0.0 Northing 1444244.73 Easting 3180148.25 Latitude 40.551044 Longitude -104.851722 Slot
 Original Well Elev WELL @ 4969.0ft (Original Well Elev)



BAYSWATER EXPLORATION & PRODUCTION



LEGEND

- Hirsch 14-24, Wellbore #1, Plan #1 (7-10-12) V0
- Wellbore #1
- Survey #1

Final Survey Plot

Projected Final Survey -
 7964'MD & 7399'TVD @ 2474'VS
 1.8 deg Inc 269.6 deg AZ

Project: SEC.26-T7N-R67W
 Site: Hirsch/Casa Loma 10 Pad Sec.26-T7N-R67W
 Well: Hirsch 14-24
 Plan: Wellbore #1



BAYSWATER EXPLORATION & PRODUCTION

SEC.26-T7N-R67W

Hirsch/Casa Loma 10 Pad Sec.26-T7N-R67W

Hirsch 14-24

Wellbore #1

Survey: Survey #1

Standard Survey Report

13 February, 2013

Survey										
	Measured Depth (ft)	Inclination (°)	Azimuth (°)	Vertical Depth (ft)	+N-S (ft)	+E-W (ft)	Vertical Section (ft)	Dogleg Rate (°/100ft)	Build Rate (°/100ft)	Turn Rate (°/100ft)
	0.0	0.00	0.00	0.0	0.0	0.0	0.0	0.00	0.00	0.00
	99.0	0.40	50.30	99.0	0.2	0.3	0.3	0.40	0.40	0.00
	186.0	1.10	89.10	186.0	0.4	1.3	1.4	0.95	0.80	44.60
	276.0	3.20	74.30	275.9	1.1	4.6	4.6	2.39	2.33	-16.44
	366.0	5.40	65.40	365.7	3.6	10.9	11.3	2.55	2.44	-9.89
	458.0	6.90	60.50	457.1	8.1	19.6	21.1	1.73	1.63	-5.33
	549.0	9.20	62.40	547.2	14.2	30.8	33.9	2.54	2.53	2.09
	640.0	11.00	63.30	636.8	21.4	45.0	49.8	1.99	1.98	0.99
	725.0	12.70	62.90	720.0	29.3	60.6	67.3	2.00	2.00	-0.47
	799.0	12.60	62.70	792.2	36.7	75.0	83.5	0.15	-0.14	-0.27
	893.0	13.10	59.10	883.9	46.9	93.3	104.4	1.00	0.53	-3.83
	987.0	15.80	59.60	974.9	58.9	113.5	127.8	2.88	2.87	0.53

Company:	BAYSWATER EXPLORATION & PRODUCTION	Local Co-ordinate Reference:	Well Hirsch 14-24
Project:	SEC.26-T7N-R67W	TVD Reference:	WELL @ 4969.0ft (Original Well Elev)
Site:	Hirsch/Casa Loma 10 Pad Sec.26-T7N-R67W	MD Reference:	WELL @ 4969.0ft (Original Well Elev)
Well:	Hirsch 14-24	North Reference:	True
Wellbore:	Wellbore #1	Survey Calculation Method:	Minimum Curvature
Design:	Wellbore #1	Database:	Landmark

Survey									
Measured Depth (ft)	Inclination (°)	Azimuth (°)	Vertical Depth (ft)	+N/-S (ft)	+E/-W (ft)	Vertical Section (ft)	Dogleg Rate (°/100ft)	Build Rate (°/100ft)	Turn Rate (°/100ft)
1,080.0	17.40	58.40	1,064.0	72.5	136.2	154.3	1.76	1.72	-1.29
1,174.0	19.00	65.20	1,153.3	86.3	162.1	183.6	2.83	1.70	7.23
1,268.0	20.80	62.60	1,241.7	100.4	190.8	215.6	2.13	1.91	-2.77
1,362.0	23.10	64.20	1,328.9	116.1	222.2	250.7	2.53	2.45	1.70
1,455.0	25.00	63.10	1,413.8	133.0	256.2	288.6	2.10	2.04	-1.18
1,549.0	26.20	63.30	1,498.6	151.3	292.4	329.2	1.28	1.28	0.21
1,643.0	27.00	63.10	1,582.6	170.3	330.0	371.3	0.86	0.85	-0.21
1,736.0	26.60	62.60	1,665.6	189.4	367.3	413.2	0.49	-0.43	-0.54
1,830.0	26.50	60.10	1,749.7	209.5	404.2	455.2	1.19	-0.11	-2.66
1,924.0	27.20	60.80	1,833.6	230.5	441.1	497.7	0.82	0.74	0.74
2,017.0	26.70	60.30	1,916.5	251.2	477.8	539.8	0.59	-0.54	-0.54
2,111.0	26.80	64.00	2,000.4	270.9	515.2	582.1	1.77	0.11	3.94
2,205.0	26.50	63.10	2,084.4	289.7	553.0	624.3	0.54	-0.32	-0.96
2,298.0	26.60	65.00	2,167.6	307.9	590.3	665.8	0.92	0.11	2.04
2,392.0	26.00	63.30	2,251.9	326.1	627.8	707.4	1.02	-0.64	-1.81
2,486.0	26.40	62.90	2,336.2	344.8	664.8	748.9	0.47	0.43	-0.43
2,580.0	26.30	59.60	2,420.5	364.9	701.4	790.6	1.56	-0.11	-3.51
2,673.0	27.30	62.90	2,503.5	385.0	738.1	832.5	1.93	1.08	3.55
2,767.0	27.20	62.60	2,587.1	404.7	776.4	875.6	0.18	-0.11	-0.32
2,861.0	26.80	62.00	2,670.8	424.6	814.2	918.2	0.51	-0.43	-0.64
2,954.0	27.70	61.20	2,753.5	444.8	851.6	960.8	1.04	0.97	-0.86
3,048.0	26.60	60.60	2,837.1	465.7	889.1	1,003.7	1.21	-1.17	-0.64
3,142.0	26.80	60.60	2,921.1	486.4	925.9	1,045.9	0.21	0.21	0.00
3,235.0	26.70	63.40	3,004.2	506.1	962.9	1,087.8	1.36	-0.11	3.01
3,329.0	26.60	61.20	3,088.2	525.7	1,000.2	1,129.9	1.06	-0.11	-2.34
3,423.0	25.30	60.10	3,172.7	545.8	1,036.1	1,171.0	1.47	-1.38	-1.17
3,516.0	26.00	63.10	3,256.5	565.0	1,071.5	1,211.3	1.59	0.75	3.23
3,610.0	27.00	62.70	3,340.7	584.1	1,108.8	1,253.2	1.08	1.06	-0.43
3,704.0	27.40	61.20	3,424.3	604.3	1,146.7	1,296.2	0.84	0.43	-1.60
3,798.0	26.70	61.90	3,508.0	624.6	1,184.3	1,338.9	0.82	-0.74	0.74
3,891.0	25.90	62.20	3,591.4	644.0	1,220.7	1,380.1	0.87	-0.86	0.32
3,985.0	25.30	62.40	3,676.1	662.8	1,256.7	1,420.7	0.64	-0.64	0.21
4,079.0	25.50	63.30	3,761.0	681.2	1,292.5	1,461.1	0.46	0.21	0.96
4,172.0	26.00	62.70	3,844.8	699.6	1,328.5	1,501.5	0.61	0.54	-0.65
4,266.0	26.60	61.50	3,929.1	719.1	1,365.3	1,543.1	0.85	0.64	-1.28
4,360.0	26.10	61.00	4,013.3	739.1	1,401.9	1,584.8	0.58	-0.53	-0.53
4,453.0	25.20	62.70	4,097.1	758.1	1,437.4	1,625.1	1.25	-0.97	1.83
4,547.0	25.50	62.20	4,182.1	776.7	1,473.1	1,665.3	0.39	0.32	-0.53
4,641.0	25.80	64.70	4,266.8	794.9	1,509.5	1,706.0	1.19	0.32	2.66
4,734.0	27.60	63.10	4,349.9	813.3	1,547.0	1,747.8	2.08	1.94	-1.72
4,828.0	27.60	64.70	4,433.2	832.5	1,586.1	1,791.3	0.79	0.00	1.70
4,922.0	27.40	64.30	4,516.6	851.2	1,625.3	1,834.7	0.29	-0.21	-0.43
5,015.0	26.90	61.70	4,599.4	870.4	1,663.1	1,877.1	1.38	-0.54	-2.80
5,109.0	26.30	60.60	4,683.4	890.7	1,699.9	1,919.2	0.83	-0.64	-1.17
5,203.0	26.40	60.50	4,767.6	911.2	1,736.3	1,960.9	0.12	0.11	-0.11
5,297.0	27.20	61.00	4,851.5	931.9	1,773.2	2,003.2	0.88	0.85	0.53
5,390.0	26.50	60.80	4,934.5	952.4	1,810.0	2,045.2	0.76	-0.75	-0.22
5,484.0	25.20	61.20	5,019.1	972.2	1,845.8	2,086.2	1.40	-1.38	0.43
5,578.0	23.10	62.00	5,104.9	990.5	1,879.6	2,124.7	2.26	-2.23	0.85
5,671.0	20.90	59.40	5,191.1	1,007.6	1,910.0	2,159.5	2.59	-2.37	-2.80
5,765.0	20.10	61.30	5,279.1	1,023.8	1,938.6	2,192.4	1.11	-0.85	2.02
5,859.0	19.90	62.90	5,367.5	1,038.9	1,967.0	2,224.5	0.62	-0.21	1.70
5,952.0	18.20	63.40	5,455.4	1,052.6	1,994.1	2,254.9	1.84	-1.83	0.54

Company:	BAYSWATER EXPLORATION & PRODUCTION	Local Co-ordinate Reference:	Well Hirsch 14-24
Project:	SEC.26-T7N-R67W	TVD Reference:	WELL @ 4969.0ft (Original Well Elev)
Site:	Hirsch/Casa Loma 10 Pad Sec.26-T7N-R67W	MD Reference:	WELL @ 4969.0ft (Original Well Elev)
Well:	Hirsch 14-24	North Reference:	True
Wellbore:	Wellbore #1	Survey Calculation Method:	Minimum Curvature
Design:	Wellbore #1	Database:	Landmark

Survey									
Measured Depth (ft)	Inclination (°)	Azimuth (°)	Vertical Depth (ft)	+N/-S (ft)	+E/-W (ft)	Vertical Section (ft)	Dogleg Rate (°/100ft)	Build Rate (°/100ft)	Turn Rate (°/100ft)
6,046.0	17.90	63.30	5,544.8	1,065.7	2,020.1	2,284.0	0.32	-0.32	-0.11
6,140.0	16.70	63.60	5,634.5	1,078.2	2,045.1	2,311.9	1.28	-1.28	0.32
6,233.0	16.40	62.90	5,723.6	1,090.1	2,068.8	2,338.4	0.39	-0.32	-0.75
6,327.0	15.10	62.90	5,814.1	1,101.7	2,091.5	2,363.9	1.38	-1.38	0.00
6,421.0	14.70	63.40	5,905.0	1,112.6	2,113.1	2,388.1	0.45	-0.43	0.53
6,515.0	13.00	62.00	5,996.2	1,122.9	2,133.1	2,410.6	1.84	-1.81	-1.49
6,608.0	10.60	64.00	6,087.2	1,131.6	2,150.0	2,429.6	2.62	-2.58	2.15
6,702.0	9.60	62.00	6,179.8	1,139.1	2,164.7	2,446.1	1.13	-1.06	-2.13
6,796.0	8.10	59.90	6,272.7	1,146.1	2,177.3	2,460.5	1.63	-1.60	-2.23
6,889.0	5.90	56.40	6,365.0	1,152.0	2,187.0	2,471.8	2.41	-2.37	-3.76
6,983.0	4.40	46.90	6,458.6	1,157.1	2,193.6	2,480.1	1.83	-1.60	-10.11
7,024.7	3.37	48.75	6,500.2	1,159.0	2,195.7	2,482.9	2.48	-2.46	4.43
TARGET BHL 662'FSL & 1965'FWL									
7,077.0	2.10	53.60	6,552.4	1,160.6	2,197.7	2,485.3	2.48	-2.44	9.28
7,170.0	1.40	99.80	6,645.4	1,161.4	2,200.2	2,487.9	1.63	-0.75	49.68
7,264.0	0.40	288.30	6,739.4	1,161.3	2,201.0	2,488.6	1.91	-1.06	-182.45
7,358.0	0.60	284.90	6,833.4	1,161.6	2,200.2	2,488.0	0.22	0.21	-3.62
7,451.0	1.00	276.10	6,926.4	1,161.8	2,198.9	2,487.0	0.45	0.43	-9.46
7,528.6	1.08	272.58	7,003.9	1,161.9	2,197.5	2,485.8	0.13	0.11	-4.54
LEGAL BOX 400' X 400', 661'FSL & 1965'FWL - TARGET CIRCLE 662'FSL & 1965'FWL									
7,545.0	1.10	271.90	7,020.4	1,161.9	2,197.2	2,485.5	0.13	0.11	-4.13
7,639.0	1.90	255.20	7,114.3	1,161.5	2,194.8	2,483.2	0.96	0.85	-17.77
7,732.0	2.10	259.80	7,207.3	1,160.8	2,191.6	2,480.1	0.28	0.22	4.95
7,826.0	1.60	273.20	7,301.2	1,160.6	2,188.6	2,477.3	0.70	-0.53	14.26
7,922.0	1.80	269.60	7,397.2	1,160.7	2,185.8	2,474.8	0.24	0.21	-3.75
7,964.0	1.80	269.60	7,439.2	1,160.7	2,184.4	2,473.6	0.00	0.00	0.00

Checked By: _____ Approved By: _____ Date: _____