

Well Name: **Casa Loma 18-25**

Surface Location: Casa Loma 8 Pad Sec.26-T7N-R67W
North American Datum 1983 US State Plane 1983 Colorado Northern Zone

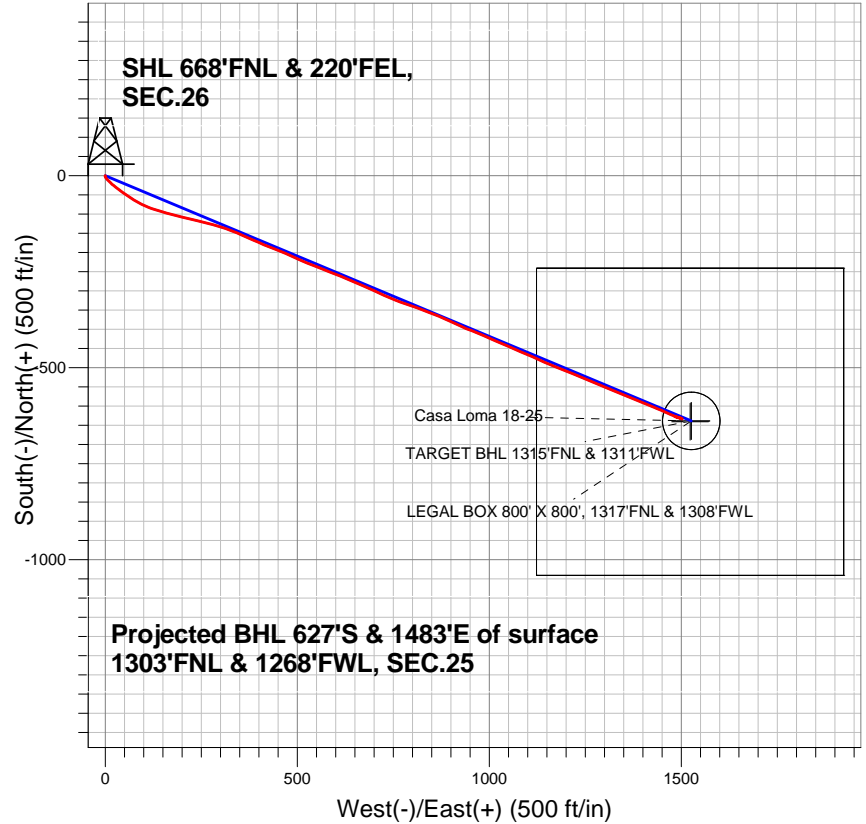
Ground Elevation: 4953.0

+N/-S	+E/-W	Northing	Easting	Latitude	Longitude
0.0	0.0	1444059.37	3180159.33	40.550535	-104.851687

Original Well Elev WELL @ 4969.0ft (Original Well Elev)

Slot

BAYSWATER EXPLORATION & PRODUCTION



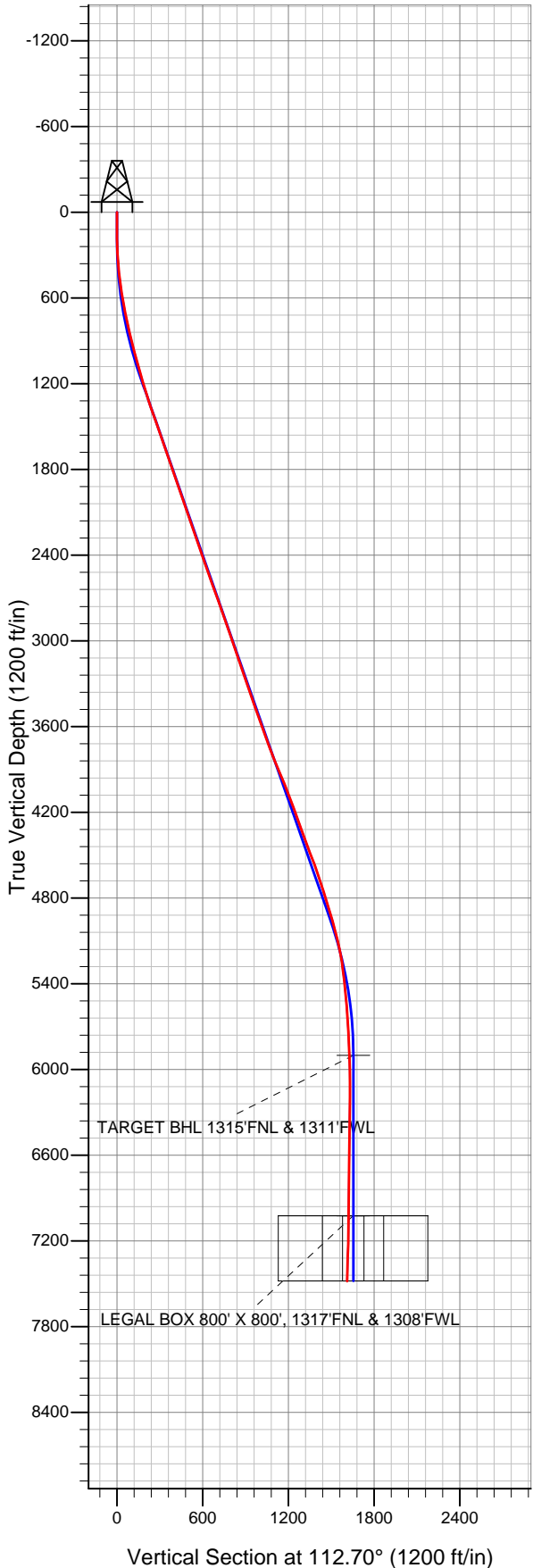
LEGEND

- △ Casa Loma 18-25, Wellbore #1, Plan #1 (7-16-12) V0
- Wellbore #1
- Survey #1

Final Survey Plot

Projected Final Survey -
7741'MD & 7482'TVD @ 1610'VS
2.0 deg Inc 293.7 deg AZ

Project: SEC.26-T7N-R67W
Site: Casa Loma 8 Pad Sec.26-T7N-R67W
Well: Casa Loma 18-25
Plan: Wellbore #1





Directional

BAYSWATER EXPLORATION & PRODUCTION

SEC.26-T7N-R67W

Casa Loma 8 Pad Sec.26-T7N-R67W

Casa Loma 18-25

Wellbore #1

Survey: Survey #1

Standard Survey Report

01 March, 2013

Survey										
	Measured Depth (ft)	Inclination (°)	Azimuth (°)	Vertical Depth (ft)	+N-S (ft)	+E-W (ft)	Vertical Section (ft)	Dogleg Rate (°/100ft)	Build Rate (°/100ft)	Turn Rate (°/100ft)
Main Survey	0.0	0.00	0.00	0.0	0.0	0.0	0.0	0.00	0.00	0.00
	99.0	0.60	205.80	99.0	-0.5	-0.2	0.0	0.61	0.61	0.00
	186.0	0.80	175.80	186.0	-1.5	-0.4	0.2	0.47	0.23	-34.48
	276.0	3.00	149.60	275.9	-4.1	0.9	2.4	2.57	2.44	-29.11
	367.0	5.60	139.20	366.7	-9.6	5.0	8.3	2.97	2.86	-11.43
	458.0	7.00	133.90	457.1	-16.8	11.9	17.4	1.66	1.54	-5.82
	550.0	9.00	129.00	548.2	-25.2	21.5	29.5	2.29	2.17	-5.33
	641.0	10.90	127.10	637.9	-34.9	33.9	44.7	2.12	2.09	-2.09
	732.0	12.30	125.70	727.0	-45.7	48.6	62.5	1.57	1.54	-1.54
	828.0	13.40	123.90	820.6	-57.9	66.2	83.4	1.22	1.15	-1.88
	922.0	13.80	119.00	912.0	-69.4	85.0	105.2	1.30	0.43	-5.21
	1,016.0	14.20	113.40	1,003.2	-79.4	105.4	127.9	1.50	0.43	-5.96

Company:	BAYSWATER EXPLORATION & PRODUCTION	Local Co-ordinate Reference:	Well Casa Loma 18-25
Project:	SEC.26-T7N-R67W	TVD Reference:	WELL @ 4969.0ft (Original Well Elev)
Site:	Casa Loma 8 Pad Sec.26-T7N-R67W	MD Reference:	WELL @ 4969.0ft (Original Well Elev)
Well:	Casa Loma 18-25	North Reference:	True
Wellbore:	Wellbore #1	Survey Calculation Method:	Minimum Curvature
Design:	Wellbore #1	Database:	Landmark

Survey									
Measured Depth (ft)	Inclination (°)	Azimuth (°)	Vertical Depth (ft)	+N/-S (ft)	+E/-W (ft)	Vertical Section (ft)	Dogleg Rate (°/100ft)	Build Rate (°/100ft)	Turn Rate (°/100ft)
1,109.0	16.00	108.30	1,093.0	-87.9	128.0	152.1	2.40	1.94	-5.48
1,203.0	16.70	105.30	1,183.2	-95.6	153.4	178.4	1.17	0.74	-3.19
1,297.0	17.90	103.90	1,272.9	-102.6	180.4	206.0	1.35	1.28	-1.49
1,390.0	19.30	104.10	1,361.0	-109.8	209.2	235.4	1.51	1.51	0.22
1,484.0	19.60	103.40	1,449.7	-117.2	239.6	266.3	0.40	0.32	-0.74
1,578.0	19.50	104.20	1,538.3	-124.7	270.1	297.4	0.30	-0.11	0.85
1,671.0	18.90	107.60	1,626.1	-133.1	299.6	327.7	1.36	-0.65	3.66
1,765.0	19.10	110.90	1,715.0	-143.2	328.4	358.2	1.16	0.21	3.51
1,859.0	19.80	114.20	1,803.6	-155.2	357.3	389.5	1.39	0.74	3.51
1,953.0	19.00	114.20	1,892.3	-168.0	385.8	420.7	0.85	-0.85	0.00
2,046.0	18.40	111.60	1,980.4	-179.6	413.3	450.6	1.10	-0.65	-2.80
2,140.0	19.00	111.40	2,069.4	-190.7	441.3	480.7	0.64	0.64	-0.21
2,234.0	19.30	113.90	2,158.2	-202.5	469.7	511.5	0.93	0.32	2.66
2,327.0	18.80	114.60	2,246.1	-215.0	497.4	541.9	0.59	-0.54	0.75
2,421.0	19.40	112.10	2,334.9	-227.2	525.7	572.6	1.08	0.64	-2.66
2,515.0	19.60	112.10	2,423.5	-239.0	554.7	604.0	0.21	0.21	0.00
2,608.0	19.30	110.70	2,511.2	-250.3	583.6	634.9	0.60	-0.32	-1.51
2,702.0	19.50	112.70	2,599.9	-261.8	612.6	666.2	0.74	0.21	2.13
2,796.0	19.90	113.20	2,688.4	-274.2	641.7	697.8	0.46	0.43	0.53
2,889.0	19.30	113.20	2,776.0	-286.5	670.4	729.0	0.65	-0.65	0.00
2,983.0	18.90	115.00	2,864.8	-299.0	698.5	759.8	0.76	-0.43	1.91
3,077.0	19.20	114.40	2,953.7	-311.8	726.4	790.4	0.38	0.32	-0.64
3,171.0	19.00	112.00	3,042.5	-324.0	754.6	821.2	0.86	-0.21	-2.55
3,264.0	19.10	108.10	3,130.4	-334.4	783.1	851.5	1.37	0.11	-4.19
3,358.0	19.30	109.70	3,219.2	-344.4	812.4	882.3	0.60	0.21	1.70
3,452.0	19.10	111.30	3,308.0	-355.2	841.3	913.2	0.60	-0.21	1.70
3,545.0	18.70	112.50	3,395.9	-366.4	869.3	943.4	0.60	-0.43	1.29
3,639.0	19.20	115.30	3,484.9	-378.8	897.2	973.9	1.10	0.53	2.98
3,733.0	19.60	114.20	3,573.5	-391.9	925.5	1,005.1	0.58	0.43	-1.17
3,826.0	19.90	111.10	3,661.1	-404.0	954.5	1,036.5	1.17	0.32	-3.33
3,920.0	20.70	113.20	3,749.2	-416.3	984.7	1,069.1	1.15	0.85	2.23
4,014.0	21.70	113.50	3,836.9	-429.7	1,015.9	1,103.1	1.07	1.06	0.32
4,107.0	22.80	113.40	3,922.9	-443.8	1,048.2	1,138.3	1.18	1.18	-0.11
4,201.0	22.40	113.40	4,009.7	-458.1	1,081.4	1,174.4	0.43	-0.43	0.00
4,295.0	20.80	114.10	4,097.1	-472.0	1,113.1	1,209.0	1.72	-1.70	0.74
4,388.0	19.80	113.50	4,184.3	-485.1	1,142.6	1,241.3	1.10	-1.08	-0.65
4,482.0	19.80	112.30	4,272.8	-497.4	1,171.9	1,273.1	0.43	0.00	-1.28
4,576.0	19.80	111.60	4,361.2	-509.3	1,201.4	1,304.9	0.25	0.00	-0.74
4,670.0	21.20	112.80	4,449.3	-521.8	1,231.9	1,337.9	1.55	1.49	1.28
4,763.0	20.80	112.80	4,536.1	-534.7	1,262.6	1,371.2	0.43	-0.43	0.00
4,857.0	18.80	112.70	4,624.5	-547.0	1,292.0	1,403.0	2.13	-2.13	-0.11
4,951.0	17.70	112.00	4,713.8	-558.2	1,319.2	1,432.5	1.19	-1.17	-0.74
5,044.0	17.10	112.30	4,802.5	-568.7	1,345.0	1,460.3	0.65	-0.65	0.32
5,138.0	16.70	112.00	4,892.5	-579.0	1,370.3	1,487.6	0.44	-0.43	-0.32
5,232.0	16.40	112.70	4,982.6	-589.2	1,395.1	1,514.4	0.38	-0.32	0.74
5,325.0	13.90	112.10	5,072.3	-598.5	1,417.5	1,538.7	2.69	-2.69	-0.65
5,419.0	11.20	113.50	5,164.1	-606.4	1,436.4	1,559.1	2.89	-2.87	1.49
5,513.0	8.50	112.70	5,256.7	-612.7	1,451.1	1,575.2	2.88	-2.87	-0.85
5,606.0	6.40	113.90	5,348.9	-617.4	1,462.2	1,587.2	2.26	-2.26	1.29
5,700.0	5.40	115.10	5,442.4	-621.4	1,471.0	1,596.9	1.07	-1.06	1.28
5,794.0	5.00	110.70	5,536.0	-624.7	1,478.9	1,605.4	0.60	-0.43	-4.68
5,888.0	4.20	110.00	5,629.7	-627.4	1,485.9	1,612.9	0.85	-0.85	-0.74
5,981.0	3.30	110.40	5,722.5	-629.5	1,491.6	1,619.0	0.97	-0.97	0.43

Company:	BAYSWATER EXPLORATION & PRODUCTION	Local Co-ordinate Reference:	Well Casa Loma 18-25
Project:	SEC.26-T7N-R67W	TVD Reference:	WELL @ 4969.0ft (Original Well Elev)
Site:	Casa Loma 8 Pad Sec.26-T7N-R67W	MD Reference:	WELL @ 4969.0ft (Original Well Elev)
Well:	Casa Loma 18-25	North Reference:	True
Wellbore:	Wellbore #1	Survey Calculation Method:	Minimum Curvature
Design:	Wellbore #1	Database:	Landmark

Survey										
Measured Depth (ft)	Inclination (°)	Azimuth (°)	Vertical Depth (ft)	+N/-S (ft)	+E/-W (ft)	Vertical Section (ft)	Dogleg Rate (°/100ft)	Build Rate (°/100ft)	Turn Rate (°/100ft)	
6,075.0	2.50	109.20	5,816.4	-631.1	1,496.1	1,623.8	0.85	-0.85	-1.28	
6,159.7	1.78	108.08	5,901.0	-632.1	1,499.1	1,626.9	0.85	-0.85	-1.32	
TARGET BHL 1315'FNL & 1311'FWL										
6,169.0	1.70	107.90	5,910.3	-632.2	1,499.4	1,627.2	0.85	-0.85	-1.94	
6,262.0	1.00	111.60	6,003.3	-632.9	1,501.4	1,629.4	0.76	-0.75	3.98	
6,356.0	0.40	116.00	6,097.3	-633.4	1,502.5	1,630.5	0.64	-0.64	4.68	
6,450.0	0.10	311.30	6,191.3	-633.5	1,502.7	1,630.8	0.53	-0.32	-175.21	
6,543.0	0.50	293.70	6,284.3	-633.2	1,502.3	1,630.3	0.44	0.43	-18.92	
6,637.0	1.00	299.50	6,378.3	-632.7	1,501.2	1,629.1	0.54	0.53	6.17	
6,731.0	1.20	300.90	6,472.3	-631.8	1,499.6	1,627.3	0.21	0.21	1.49	
6,824.0	1.40	302.50	6,565.2	-630.6	1,497.9	1,625.2	0.22	0.22	1.72	
6,918.0	0.40	248.50	6,659.2	-630.1	1,496.6	1,623.8	1.29	-1.06	-57.45	
7,012.0	0.40	132.20	6,753.2	-630.5	1,496.5	1,623.9	0.72	0.00	-123.72	
7,105.0	0.40	267.70	6,846.2	-630.7	1,496.4	1,623.9	0.80	0.00	145.70	
7,199.0	0.80	280.50	6,940.2	-630.6	1,495.5	1,623.0	0.45	0.43	13.62	
7,282.3	0.98	278.51	7,023.5	-630.4	1,494.2	1,621.7	0.22	0.21	-2.40	
LEGAL BOX 800' X 800', 1317'FNL & 1308'FWL - TARGET CIRCLE 1315'FNL & 1311'FWL										
7,293.0	1.00	278.30	7,034.2	-630.4	1,494.0	1,621.5	0.22	0.21	-1.92	
7,387.0	1.00	269.60	7,128.2	-630.3	1,492.4	1,620.0	0.16	0.00	-9.26	
7,480.0	1.40	285.50	7,221.2	-630.0	1,490.5	1,618.1	0.56	0.43	17.10	
7,574.0	1.80	291.60	7,315.1	-629.1	1,488.0	1,615.5	0.46	0.43	6.49	
7,668.0	1.90	292.00	7,409.1	-628.0	1,485.2	1,612.5	0.11	0.11	0.43	
7,741.0	2.00	293.70	7,482.0	-627.0	1,482.9	1,610.0	0.16	0.14	2.33	

Checked By: _____ Approved By: _____ Date: _____