

---

**CONOCO/PHILLIPS COMPANY EBUSINESS**

---

Zukowski 17 1H  
WILDCAT  
Arapahoe County , Colorado

**Cement Surface Casing**  
07-Jul-2013

**Job Site Documents**

*The Road to Excellence Starts with Safety*

Sold To #: 352431	Ship To #: 3008551	Quote #:	Sales Order #: 900573057
Customer: CONOCO/PHILLIPS COMPANY EBUSINESS		Customer Rep: Evans, Wes	
Well Name: Zukowski 17	Well #: 1H	API/UWI #: 05-005-07208	
Field: WILDCAT	City (SAP): AURORA	County/Parish: Arapahoe	State: Colorado
Lat: N 39.708 deg. OR N 39 deg. 42 min. 28.238 secs.		Long: W 104.566 deg. OR W -105 deg. 26 min. 3.649 secs.	
Job Purpose: Cement Surface Casing			
Well Type: Development Well		Job Type: Cement Surface Casing	
Sales Person: PLIENESS, RYAN		Srvc Supervisor: MCBRIDE, NATHAN	MBU ID Emp #: 313810

**Job Personnel**

HES Emp Name	Exp Hrs	Emp #	HES Emp Name	Exp Hrs	Emp #	HES Emp Name	Exp Hrs	Emp #
MARKOVICH, STEVEN Michael	9.0	502964	MCBRIDE, NATHAN Charles	9.0	313810			

**Equipment**

HES Unit #	Distance-1 way	HES Unit #	Distance-1 way	HES Unit #	Distance-1 way	HES Unit #	Distance-1 way
10246780C	65 mile	10988836	65 mile	11036301	65 mile	11362287C	65 mile
11562570C	65 mile	12010170	65 mile	5707C	65 mile		

**Job Hours**

Date	On Location Hours	Operating Hours	Date	On Location Hours	Operating Hours	Date	On Location Hours	Operating Hours
TOTAL								

Total is the sum of each column separately

**Job**

**Job Times**

Formation Name	Formation Depth (MD)	Top	Bottom	Called Out	Date	Time	Time Zone
				On Location	07 - Jul - 2013	14:00	MST
Form Type			BHST	Job Started	07 - Jul - 2013	18:41	MST
Job depth MD	2200. ft		Job Depth TVD	2200. ft	Job Completed	07 - Jul - 2013	21:35
Water Depth			Wk Ht Above Floor	5. ft	Departed Loc	07 - Jul - 2013	22:56
Perforation Depth (MD)	From		To				

**Well Data**

Description	New / Used	Max pressure psig	Size in	ID in	Weight lbm/ft	Thread	Grade	Top MD ft	Bottom MD ft	Top TVD ft	Bottom TVD ft
13-1/2" Open Hole				13.5				124.	2198.		
16" Casing	Unknown		16.	15.5				.	124.		
9-5/8" Casing	Unknown		9.625	8.921	36.	STC	J-55	.	2198.		

**Sales/Rental/3<sup>rd</sup> Party (HES)**

Description	Qty	Qty uom	Depth	Supplier
CMT SURFACE CASING BOM	0	JOB		
SHOE,FLT,9-5/8 8RD,2-3/4 SUPER SEAL	1	EA		
CLR,FLT,9-5/8 8RD 29.3-40PPF,2-3/4	1	EA		
CENTRALIZER-9-5/8"-CSG-12 1/4"-HINGED	25	EA		
COLLAR-STOP-9 5/8"-FRICTION-HINGED	1	EA		
KIT,HALL WELD-A	1	EA		
MILEAGE FOR CEMENTING CREW,ZI	100	MI		

**Tools and Accessories**

Type	Size	Qty	Make	Depth	Type	Size	Qty	Make	Depth	Type	Size	Qty	Make
Guide Shoe					Packer					Top Plug			
Float Shoe					Bridge Plug					Bottom Plug			
Float Collar					Retainer					SSR plug set			
Insert Float										Plug Container			
Stage Tool										Centralizers			

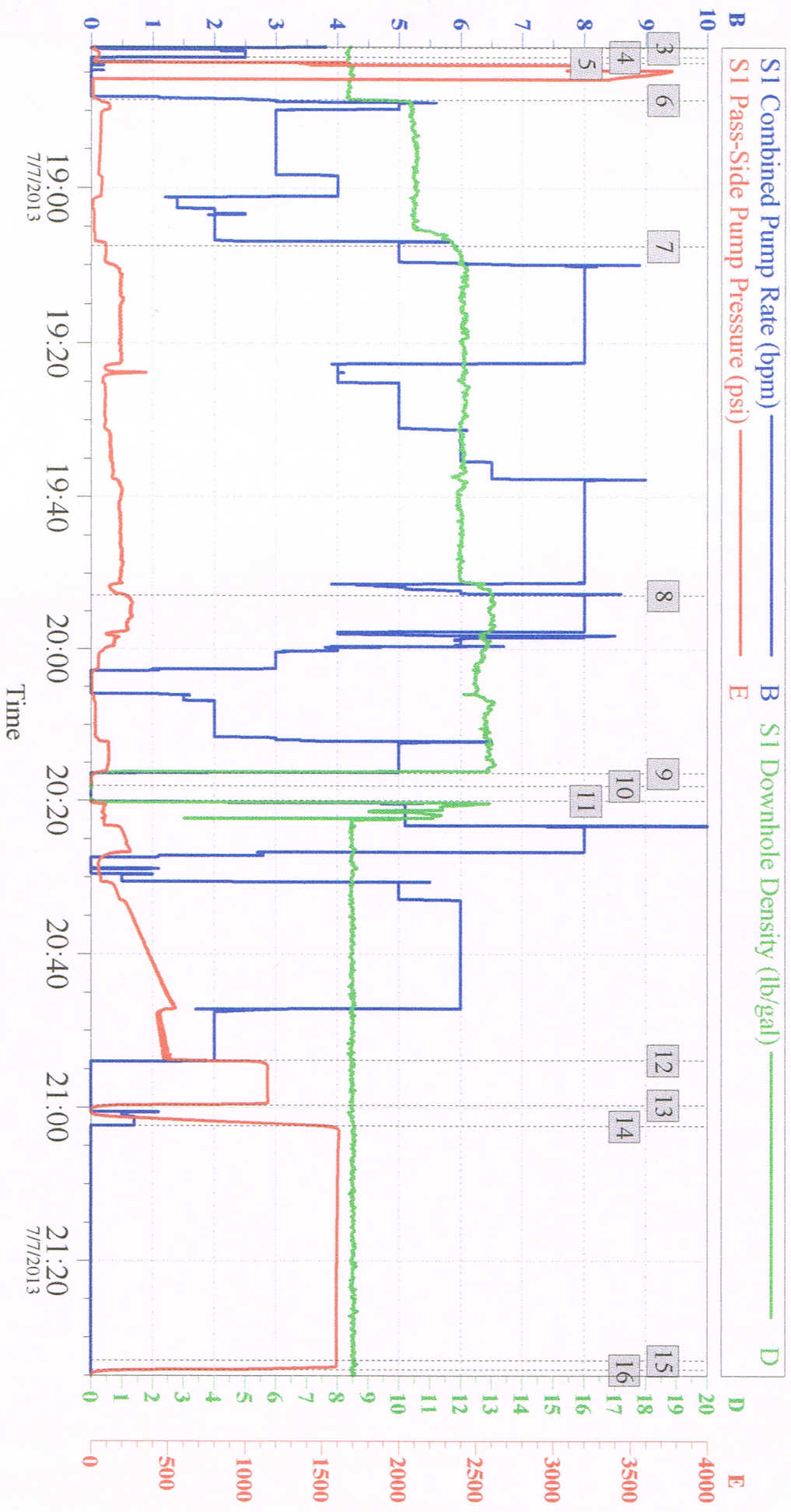
Miscellaneous Materials													
Gelling Agt		Conc		Surfactant		Conc		Acid Type		Qty	Conc %		
Treatment Fld		Conc		Inhibitor		Conc		Sand Type		Size	Qty		
Fluid Data													
Stage/Plug #: 1													
Fluid #	Stage Type	Fluid Name			Qty	Qty uom	Mixing Density lbm/gal	Yield ft <sup>3</sup> /sk	Mix Fluid Gal/sk	Rate bbl/min	Total Mix Fluid Gal/sk		
1	Fresh Water Spacer				40.00	bbl	8.33	.0	.0	.0			
2	Clean Spacer				50.00	bbl	10.5	2.67	16.75	.0			
		1.14 lbm/bbl SA-1015, 50 LB SACK (102077046)											
		145.54 lbm/bbl SAND-SSA-1 - SILICA FLOUR - 200 MESH, BULK (100003691)											
3	SwiftCem B2	SWIFTCEM (TM) SYSTEM (452990)			535.0	sacks	12.	2.56	15.09		15.09		
		15.086 Gal FRESH WATER											
4	SwiftCem B2	SWIFTCEM (TM) SYSTEM (452990)			245.0	sacks	13.	2.01	10.99		10.99		
		10.989 Gal FRESH WATER											
Calculated Values			Pressures			Volumes							
Displacement			Shut In: Instant			Lost Returns			Cement Slurry			Pad	
Top Of Cement			5 Min			Cement Returns			Actual Displacement			Treatment	
Frac Gradient			15 Min			Spacers			Load and Breakdown			Total Job	
Rates													
Circulating			Mixing			Displacement			Avg. Job				
Cement Left In Pipe			Amount	44 ft	Reason	Shoe Joint							
Frac Ring # 1 @		ID	Frac ring # 2 @		ID	Frac Ring # 3 @		ID	Frac Ring # 4 @		ID		
The Information Stated Herein Is Correct						Customer Representative Signature							

*The Road to Excellence Starts with Safety*

Sold To #: 352431	Ship To #: 3008551	Quote #:	Sales Order #: 900573057
Customer: CONOCO/PHILLIPS COMPANY EBUSINESS		Customer Rep: Evans, Wes	
Well Name: Zukowski 17	Well #: 1H	API/UWI #: 05-005-07208	
Field: WILDCAT	City (SAP): AURORA	County/Parish: Arapahoe	State: Colorado
<b>Legal Description:</b>			
Lat: N 39.708 deg. OR N 39 deg. 42 min. 28.238 secs.		Long: W 104.566 deg. OR W -105 deg. 26 min. 3.649 secs.	
Contractor:		Rig/Platform Name/Num: H&P 280	
Job Purpose: Cement Surface Casing			Ticket Amount:
Well Type: Development Well		Job Type: Cement Surface Casing	
Sales Person: PLIENESS, RYAN		Srvc Supervisor: MCBRIDE, NATHAN	MBU ID Emp #: 313810

Activity Description	Date/Time	Cht #	Rate bbl/min	Volume bbl		Pressure psig		Comments
				Stage	Total	Tubing	Casing	
Arrive at Location from Service Center	07/07/2013 14:00							All Equipment and Materials on Location Rig still Running Casing
Assessment Of Location Safety Meeting	07/07/2013 14:05							Review 3rd party activities, overhead lines and hazard hunt 3 employees in COP orientation
Casing on Bottom	07/07/2013 15:15							
Circulate Well	07/07/2013 15:20							
Pre-Rig Up Safety Meeting	07/07/2013 15:21							Review JSA and Spotting Equipment
Rig-Up Equipment	07/07/2013 15:45							
Rig-Up Completed	07/07/2013 17:15							
Pre-Job Safety Meeting	07/07/2013 18:00							
Start Job	07/07/2013 18:40							
Pump Water	07/07/2013 18:42		2	2			50.0	Fill Lines
Drop Bottom Plug	07/07/2013 18:43							
Test Lines	07/07/2013 18:44						3285.0	
Pump Spacer	07/07/2013 18:48		3	50			68.0	Clean Spacer @ 10.5ppg,
Comment	07/07/2013 18:49							Rig Down floor, Rig Up wash up line
Pump Lead Cement	07/07/2013 19:07		8	244			190.0	535sk @ 12.0ppg, 2.56yield, 15.09gal/sk
Pump Tail Cement	07/07/2013 19:51		5	87.7			150.0	245sk @ 13.0ppg, 2.01yield, 10.99gal/sk

Activity Description	Date/Time	Cht #	Rate bbl/min	Volume bbl		Pressure psig		Comments
				Stage	Total	Tubing	Casing	
Spacer Returns to Surface	07/07/2013 20:00							50bbls to Pit
Shutdown	07/07/2013 20:16							
Drop Top Plug	07/07/2013 20:18							
Pump Displacement	07/07/2013 20:20		6	149.9			490.0	Fresh Water
Cement Returns to Surface	07/07/2013 20:25							130bbls cement to pit
Bump Plug	07/07/2013 20:54						1150.0	500psi Over
Check Floats	07/07/2013 21:00							Floats Good
Pressure Test	07/07/2013 21:03						1594.0	Test casing 1500psi/30minutes
Bleeding Tubing Or Casing	07/07/2013 21:34							
Rig-Down Completed	07/07/2013 22:50							
End Job	07/07/2013 23:00							Thanks McBride and Crew



Customer: COP  
Well Description: Zukowski 17-1H

Job Date: 07-Jul-2013  
Job Type: Surface

Sales Order #: 900573057  
Supervisor: McBride

**HALLIBURTON**

---

**CONOCO/PHILLIPS COMPANY EBUSINESS**

---

**Zukowski 17-1H  
WILDCAT  
Arapahoe County , Colorado**

**Plug Service - Whipstock  
12-Jul-2013**

**Job Site Documents**

Field Ticket

Field Ticket Number: 900585229 Field Ticket Date: Saturday, July 13, 2013

Bill To:

Ship To:
CONOCO ZUKOWSKI 17 #1H,ARAPAHOE
ZUKOWSKI 17 #1H
3008551
S17 T4S R64W
AURORA, CO 80010

Job Name: Whipstock
Order Type: Streamline Order (ZOH)
Well Name: Zukowski 17-1H
Company Code: 1100
Customer PO No.: NA
Shipping Point: Fort Lupton, CO, USA
Sales Office: Rocky Mountains BD
Well Type: Gas
Well Category: Development

Table with 8 columns: Material, Description, QTY, UOM, Base Amt, Unit Amt, Gross Amount, Discount, Net Amount

THIS OUTPUT DOES NOT INCLUDE TAXES. APPLICABLE SALES TAX WILL BE BILLED ON THE FINAL INVOICE.
CUSTOMER HEREBY ACKNOWLEDGES RECEIPT OF THE MATERIALS AND SERVICES DESCRIBED ABOVE AND ON THE ATTACHED DOCUMENTS.

X FIELD TICKET TOTAL: USD 30,091.44

Customer Signature

Was our HSE performance satisfactory? Y or N (Health, Safety, Environment)
Were you satisfied with our Equipment? Y or N
Were you satisfied with our people? Y or N

Comments

*The Road to Excellence Starts with Safety*

Sold To #: 352431	Ship To #: 3008551	Quote #:	Sales Order #: 900585229
Customer: CONOCO/PHILLIPS COMPANY EBUSINESS		Customer Rep: Evens, Wes	
Well Name: Zukowski	Well #: 17-1H	API/UWI #: 05005072080000	
Field: WILDCAT	City (SAP): AURORA	County/Parish: Arapahoe	State: Colorado
Legal Description: Section 17 Township 4S Range 64W			
Contractor: H&P		Rig/Platform Name/Num: H&P 280	
Job Purpose: Plug Service - Whipstock			
Well Type: Development Well		Job Type: Plug Service - Whipstock	
Sales Person: GROFF, THEODORE		Srvc Supervisor: VIGIL, NICHOLAS	MBU ID Emp #: 443481

**Job Personnel**

HES Emp Name	Exp Hrs	Emp #	HES Emp Name	Exp Hrs	Emp #	HES Emp Name	Exp Hrs	Emp #
MAYFIELD, BYRON L	7.5	528751	MULLER, MICHEL B	7.5	529830	Reed, Paul	7.5	777779
ROMERO, JOSEPH M	7.5	512137	SIMS, DENNIS A	7.5	158880	VIGIL, NICHOLAS Joseph	7.5	443481

**Equipment**

HES Unit #	Distance-1 way	HES Unit #	Distance-1 way	HES Unit #	Distance-1 way	HES Unit #	Distance-1 way
10857080C	40 mile	11398490	40 mile	11527041C	40 mile	11562570C	40 mile
11748359	40 mile	12010168	40 mile	5707C	40 mile	NA	40 mile

**Job Hours**

Date	On Location Hours	Operating Hours	Date	On Location Hours	Operating Hours	Date	On Location Hours	Operating Hours
7/12/2013	7.5	1						

**TOTAL** Total is the sum of each column separately

Job				Job Times			
Formation Name	Formation Depth (MD)	Top	Bottom	Called Out	Date	Time	Time Zone
				On Location	12 - Jul - 2013	14:00	MST
Form Type			BHST	On Location	12 - Jul - 2013	18:30	MST
Job depth MD	7916. ft		Job Depth TVD	7916. ft	Job Started	12 - Jul - 2013	22:19
Water Depth			Wk Ht Above Floor		Job Completed	12 - Jul - 2013	23:16
Perforation Depth (MD)	From		To		Departed Loc	13 - Jul - 2013	02:00

**Well Data**

Description	New / Used	Max pressure psig	Size in	ID in	Weight lbm/ft	Thread	Grade	Top MD ft	Bottom MD ft	Top TVD ft	Bottom TVD ft
8-3/4" Pilot Hole				8.75				1970.	7995.		
9-5/8" Casing	Unknown		9.625	8.921	36.	STC	J-55	.	1970.		
4" Drill Pipe	Unknown		4.	3.34	14.			.	6009.		
4" HWDP	Unknown		4.	2.	29.			6009.	7009.		
OH Whipstock Assembly	Unknown		6.625	2.				7009.	7021.		
2-7/8" Tubing	Unknown		2.875	2.441	6.4			7021.	7970.		

**Tools and Accessories**

Type	Size	Qty	Make	Depth	Type	Size	Qty	Make	Depth	Type	Size	Qty	Make
Guide Shoe					Packer					Top Plug			
Float Shoe					Bridge Plug					Bottom Plug			
Float Collar					Retainer					SSR plug set			
Insert Float										Plug Container			
Stage Tool										Centralizers			

**Miscellaneous Materials**

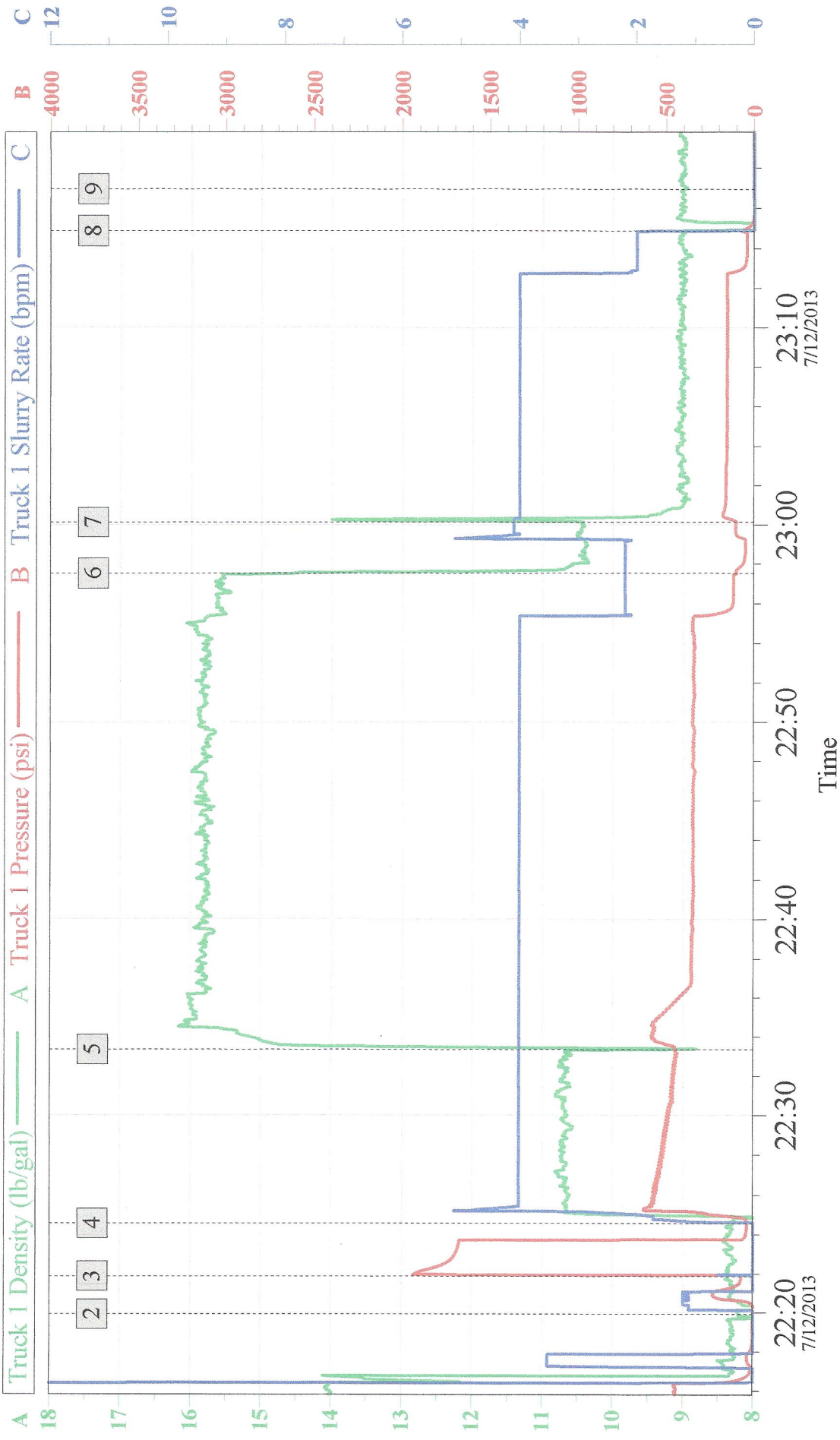
Gelling Agt	Conc	Surfactant	Conc	Acid Type	Qty	Conc %
Treatment Fld	Conc	Inhibitor	Conc	Sand Type	Size	Qty

Fluid Data									
Stage/Plug #: 1									
Fluid #	Stage Type	Fluid Name	Qty	Qty uom	Mixing Density lbm/gal	Yield ft <sup>3</sup> /sk	Mix Fluid Gal/sk	Rate bbl/min	Total Mix Fluid Gal/sk
1	Clean Spacer III		37.00	bbl	10.5	.0	.0	.0	
	0.5 gal/bbl	SEM-7, 5 GAL PAIL (100003860)							
	0.5 gal/bbl	MUSOL(R) A, 5 GAL PAIL (100064220)							
2	Plugcem	<b>PLUGCEM (TM) SYSTEM (452969)</b>	325.0	sacks	15.8	1.52	6.19		6.19
	35 %	SAND-SSA-1 - SILICA FLOUR - 200 MESH, BULK (100003691)							
	0.25 %	HR-5, 50 LB SK (100005050)							
	6.19 Gal	FRESH WATER							
3	Clean Spacer III		3.00	bbl	10.5	.0	.0	.0	
	0.5 gal/bbl	SEM-7, 5 GAL PAIL (100003860)							
	0.5 gal/bbl	MUSOL(R) A, 5 GAL PAIL (100064220)							
Calculated Values		Pressures			Volumes				
Displacement	58.5	Shut In: Instant		Lost Returns	no	Cement Slurry		Pad	
Top Of Cement	6800'	5 Min		Cement Returns		Actual Displacement	56.5	Treatment	
Frac Gradient		15 Min		Spacers		Load and Breakdown		Total Job	
Rates									
Circulating		Mixing		4	Displacement		4	Avg. Job	4
Cement Left In Pipe	Amount	40 ft	Reason	Shoe Joint					
Frac Ring # 1 @	ID	Frac ring # 2 @	ID	Frac Ring # 3 @	ID	Frac Ring # 4 @	ID		
The Information Stated Herein Is Correct				Customer Representative Signature					

*The Road to Excellence Starts with Safety*

Sold To #: 352431	Ship To #: 3008551	Quote #:	Sales Order #: 900585229
Customer: CONOCO/PHILLIPS COMPANY EBUSINESS		Customer Rep: Evens, Wes	
Well Name: Zukowski	Well #: 17-1H	API/UWI #: 05005072080000	
Field: WILDCAT	City (SAP): AURORA	County/Parish: Arapahoe	State: Colorado
Legal Description: Section 17 Township 4S Range 64W			
Lat: N 0 deg. OR N 0 deg. 0 min. 0 secs.		Long: E 0 deg. OR E 0 deg. 0 min. 0 secs.	
Contractor: H&P	Rig/Platform Name/Num: H&P 280		
Job Purpose: Plug Service - Whipstock			Ticket Amount:
Well Type: Development Well		Job Type: Plug Service - Whipstock	
Sales Person: GROFF, THEODORE	Srv Supervisor: VIGIL, NICHOLAS	MBU ID Emp #: 443481	

Activity Description	Date/Time	Cht #	Rate bbl/min	Volume bbl		Pressure psig		Comments
				Stage	Total	Tubing	Casing	
Arrive At Loc	07/12/2013 18:30							Well site assesment, Hazard hunt, Rig up safety meeting, Waited for rig
Start Job	07/12/2013 22:19							Pre job safety meeting
Test Lines	07/12/2013 22:21							Pressure tested lines to 1500 psi
Pump Spacer 1	07/12/2013 22:24		4	35			498.0	10.5 ppg Clean Spacer
Pump Cement	07/12/2013 22:33		4	88			344.0	15.8 ppg PlugCem (325 sks), weight verified by scale
Pump Spacer 2	07/12/2013 22:57		4	5			119.0	10.5 ppg Clean Spacer
Pump Displacement	07/12/2013 23:00		4	56.5			153.0	9 ppg OBM, Calculated 58.5 bbl to balance we balanced at 56.5
End Job	07/12/2013 23:16							Rig down safety meeting



Customer:	Conoco Phillips	Job Date:	12-Jul-2013	Sales Order #:	900585229
Well Description:	Zukowski 17-1H	Job Type:	Whipstock	Supervisor:	N. VIGIL

---

**CONOCO/PHILLIPS COMPANY EBUSINESS**

---

**Zukowski 17-1H  
WILDCAT  
Arapahoe County , Colorado**

**Cement Intermediate Casing  
16-Jul-2013**

**Job Site Documents**

*The Road to Excellence Starts with Safety*

<b>Sold To #:</b> 352431	<b>Ship To #:</b> 3008551	<b>Quote #:</b>	<b>Sales Order #:</b> 900590260
<b>Customer:</b> CONOCO/PHILLIPS COMPANY EBUSINESS		<b>Customer Rep:</b> Evans, Wes	
<b>Well Name:</b> Zukowski		<b>Well #:</b> 17-1H	<b>API/UWI #:</b> 05-005-07208
<b>Field:</b> WILDCAT	<b>City (SAP):</b> AURORA	<b>County/Parish:</b> Arapahoe	<b>State:</b> Colorado
<b>Legal Description:</b> Section 17 Township 4S Range 64W			
<b>Lat:</b> N 39.708 deg. OR N 39 deg. 42 min. 28.238 secs.		<b>Long:</b> W 104.566 deg. OR W -105 deg. 26 min. 3.649 secs.	
<b>Job Purpose:</b> Cement Intermediate Casing			
<b>Well Type:</b> Development Well		<b>Job Type:</b> Cement Intermediate Casing	
<b>Sales Person:</b> GROFF, THEODORE		<b>Srvc Supervisor:</b> NIELSON, BRANDON	
<b>MBU ID Emp #:</b> 479703			

**Job Personnel**

HES Emp Name	Exp Hrs	Emp #	HES Emp Name	Exp Hrs	Emp #	HES Emp Name	Exp Hrs	Emp #
ALVARADO, JOSE Angel	10.0	505918	BARNES, BRIAN L	10.0	485204	MILLS, CHUCK	10.0	0
NIELSON, BRANDON K	10.0	479703	OTERI, VAUGHN Steeves	10.0	443828	SAUCEDA, JIMMY	10.0	0

**Equipment**

HES Unit #	Distance-1 way	HES Unit #	Distance-1 way	HES Unit #	Distance-1 way	HES Unit #	Distance-1 way
11036301	37 mile	11398319	37 mile	11542577	37 mile	11630991C	37 mile
11764739	37 mile	11808819	37 mile	11812069C	37 mile	11923776C	37 mile
12010172	37 mile						

**Job Hours**

Date	On Location Hours	Operating Hours	Date	On Location Hours	Operating Hours	Date	On Location Hours	Operating Hours

**TOTAL** Total is the sum of each column separately

Job				Job Times			
Formation Name	Top	Bottom	Called Out	Date	Time	Time Zone	
Formation Depth (MD)			On Location	16 - Jul - 2013	11:00	MST	
Form Type		BHST	On Location	16 - Jul - 2013	16:00	MST	
Job depth MD	7965. ft	Job Depth TVD	Job Started	16 - Jul - 2013	21:23	MST	
Water Depth		Wk Ht Above Floor	Job Completed	16 - Jul - 2013	23:58	MST	
Perforation Depth (MD)	From	To	Departed Loc	17 - Jul - 2013	02:00	MST	

**Well Data**

Description	New / Used	Max pressure psig	Size in	ID in	Weight lbm/ft	Thread	Grade	Top MD ft	Bottom MD ft	Top TVD ft	Bottom TVD ft
8-3/4" Open Hole				8.75				1970.	7965.		
7" Casing	Unknown		7.	6.094	32.	BTC	P-110	.	7955.		
9-5/8" Casing	Unknown		9.625	8.921	36.	STC	J-55	.	1975.		

**Sales/Rental/3<sup>rd</sup> Party (HES)**

Description	Qty	Qty uom	Depth	Supplier
CMT CASING EQUIPMENT BOM	1	JOB		
CLAMP - LIMIT - 4-1/2 - HINGED -	1	EA		
CENTRALISER SLIDER II,#0700-0834S	85	EA		
CENTRALIZER SLIDER II 4 1/2" x 6"	185	EA		
SOLID STOP COLLAR 4-1/2", #0412-00SO	369	EA		
MILEAGE FOR CEMENTING CREW,ZI	50	MI		
ZI FUEL SURCHG-CARS/PICKUPS<1 1/2TON	50	MI		

**Tools and Accessories**

Type	Size	Qty	Make	Depth	Type	Size	Qty	Make	Depth	Type	Size	Qty	Make
Guide Shoe					Packer					Top Plug			

Float Shoe					Bridge Plug					Bottom Plug			
Float Collar					Retainer					SSR plug set			
Insert Float										Plug Container			
Stage Tool										Centralizers			
<b>Miscellaneous Materials</b>													
Gelling Agt		Conc		Surfactant		Conc		Acid Type		Qty		Conc	%
Treatment Fld		Conc		Inhibitor		Conc		Sand Type		Size		Qty	
<b>Fluid Data</b>													
<b>Stage/Plug #: 1</b>													
Fluid #	Stage Type	Fluid Name			Qty	Qty uom	Mixing Density lbm/gal	Yield ft3/sk	Mix Fluid Gal/sk	Rate bbl/min	Total Mix Fluid Gal/sk		
1	Clean Spacer III				40.00	bbl	10.5	3.86	24.21	.0			
	0.5 gal/bbl	SEM-7, 55 GAL DRUM (100001626)											
	0.5 gal/bbl	MUSOL(R) A, BULK (100003696)											
2	ExtendaCem B1	EXTENDACEM (TM) SYSTEM (452981)			450.0	sacks	12.	1.99	10.64		10.64		
	10.639 Gal	FRESH WATER											
3	HalCem	HALCEM (TM) SYSTEM (452986)			125.0	sacks	15.8	1.52	6.19		6.19		
	0.25 %	HR-5, 50 LB SK (100005050)											
	0.125 lbm	POLY-E-FLAKE (101216940)											
	6.19 Gal	FRESH WATER											
<b>Calculated Values</b>				<b>Pressures</b>				<b>Volumes</b>					
Displacement		Shut In: Instant		Lost Returns		0	Cement Slurry		Pad				
Top Of Cement		5 Min		Cement Returns		0	Actual Displacement		Treatment				
Frac Gradient		15 Min		Spacers		0	Load and Breakdown		Total Job				
<b>Rates</b>													
Circulating		Mixing		Displacement		Avg. Job							
Cement Left In Pipe		Amount	97.29 ft	Reason	Shoe Joint								
Frac Ring # 1 @	ID	Frac ring # 2 @	ID	Frac Ring # 3 @	ID	Frac Ring # 4 @	ID						
The Information Stated Herein Is Correct					<b>Customer Representative Signature</b>								

*The Road to Excellence Starts with Safety*

Sold To #: 352431	Ship To #: 3008551	Quote #:	Sales Order #: 900590260
Customer: CONOCO/PHILLIPS COMPANY EBUSINESS		Customer Rep: Evans, Wes	
Well Name: Zukowski	Well #: 17-1H	API/UWI #: 05-005-07208	
Field: WILDCAT	City (SAP): AURORA	County/Parish: Arapahoe	State: Colorado
Legal Description: Section 17 Township 4S Range 64W			
Lat: N 39.708 deg. OR N 39 deg. 42 min. 28.238 secs.		Long: W 104.566 deg. OR W -105 deg. 26 min. 3.649 secs.	
Contractor:		Rig/Platform Name/Num: H&P 280	
Job Purpose: Cement Intermediate Casing			Ticket Amount:
Well Type: Development Well		Job Type: Cement Intermediate Casing	
Sales Person: GROFF, THEODORE		Srvc Supervisor: NIELSON, BRANDON	MBU ID Emp #: 479703

Activity Description	Date/Time	Cht #	Rate bbl/min	Volume bbl		Pressure psig		Comments
				Stage	Total	Tubing	Casing	
Arrive At Loc	07/16/2013 16:00							37 JOINTS OF CASING ON THE RACK WHEN WE ARRIVED
Casing on Bottom	07/16/2013 19:30							
Safety Meeting	07/16/2013 20:55							RIG UP SAFTEY MEETING
Start Job	07/16/2013 21:23							
Test Lines	07/16/2013 21:25							TESTED LINES TO 4000 PSI NO VISIBLE LEAKS
Pump Spacer 1	07/17/2013 21:30		4	40			300.0	TUNE SPACER MIXED @ 10.5 PPG ON THE BATCH MIXER
Drop Bottom Plug	07/17/2013 21:51							PLUG PRE LAODED WITNESSED BY COMPANY REP
Pump Lead Cement	07/17/2013 21:52		8	159.5			540.0	450 SKS EXTENDACEM MIXED @ 12 PPG WITH FRESH WATER
Pump Tail Cement	07/17/2013 22:16		6	33.8			390.0	125 SKS HALCEM MIXED @ 15.8 PPG WITH FRESH WATER
Shutdown	07/17/2013 22:27							
Clean Lines	07/17/2013 22:28							WASH PUMPS AND LINES TO TANK
Drop Top Plug	07/17/2013 22:32							PLUG PRE LOADED WITNESSED BY COMPANY REP
Pump Displacement	07/17/2013 22:32		8	283.6			980.0	FRESH WATER. GOOD RETURNES THROUGHOUT

Sold To #: 352431

Ship To #: 3008551

Quote # :

Sales Order #: 900590260

SUMMIT Version: 7.3.0081

Wednesday, July 17, 2013 01:30:00

Activity Description	Date/Time	Cht #	Rate bbl/min	Volume bbl		Pressure psig		Comments
				Stage	Total	Tubing	Casing	
Bump Plug	07/17/2013 23:17		3				2310. 0	CALCULATED PRESSURE TO LAND WAS 1551 PSI
Check Floats	07/17/2013 23:23						2810. 0	FLAOTS HELD WITH 2.5 BBL BACK TO THE PUMP TRUCK
Test Lines	07/17/2013 23:27		1				1604. 0	30 MINUTE 1500PSI CASING TEST
Monitor Pressure	07/17/2013 23:27							
Record Pressure	07/17/2013 23:27							
Release Casing Pressure	07/17/2013 23:58						1871. 0	TEST WAS SUCCESFULL
End Job	07/17/2013 23:59							
Rig-Down Equipment	07/18/2013 00:15							

Sold To # : 352431

Ship To # :3008551

Quote # :

Sales Order # : 900590260

SUMMIT Version: 7.3.0081

Wednesday, July 17, 2013 01:30:00

# Material Roll Up

Sales Order #: 8267484

AFE #:

Crew: RED CREW

WO #:

Requested Job Start Date: \_\_\_\_\_

PO #:

## Colorado Oil and Gas Commission Wellsite Form

Customer: CONOCO PHILLIPS

Field: Wattenburg

Job Type: INTERMEDIATE

UWI / API Number:

County/Parish:

Service Supervisor: BRANDON NIELSON

Well Name: ZUKOWSKI

State: COLORADO

Well No: 17-1H

Latitude:

Stage / Zone:

Longitude:

Cust Rep Name:

Formation:

Sect / Twn / Rng: / /

Cust Rep Phone #: (

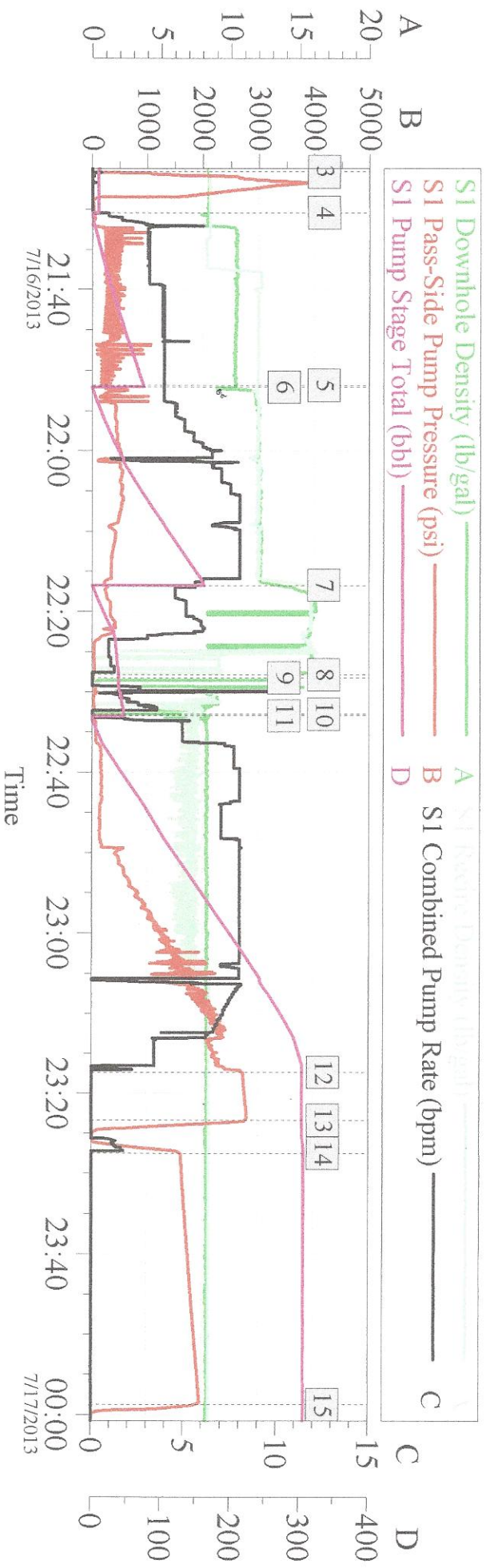
**Do Not leave the yard without the proper MSDS documentation for All chemicals.**

Colorado Oil and Gas Commission					
Material	Delivered to Location	UOM	Specific Gravity	Weight (lbs)	Comment
CLEAN SPACER	7-17-13	LB		5879	
EXTENDACEM	7-17-13	LB		40581	
HALCEM	7-17-13	LB		15958	
SEM 7	7-17-13	GAL		20	
MUSOL A	7-17-13	GAL		20	
D-AIR 300L	7-17-13	Gal		10	
		LB			

Operator provided all Material Safety Data Sheets (MSDS) related to material listed above.  
Operator representative will check box to designate he/she has received all MSDS documentation.

\_\_\_\_\_  
Operator Representative Signature

# CONOCO ZUKOWSKI 17-1H 7 INTERMEDIATE



## Global Event Log

SPPP		SPPP	
Intersection		Intersection	
1 Starting Job	7/16/2013 19:25:36 -4.000	2 Start Job	7/16/2013 21:23:24 4.000
3 Test Lines	7/16/2013 21:25:27 116.0	4 Pump Spacer 1	7/16/2013 21:30:26 17.00
5 Drop Bottom Plug	7/16/2013 21:51:50 175.0	6 Pump Lead Cement	7/16/2013 21:52:04 305.4
7 Pump Tail Cement	7/16/2013 22:16:43 239.0	8 Shutdown	7/16/2013 22:27:51 19.98
9 Clean Lines	7/16/2013 22:28:14 14.00	10 Drop Top Plug	7/16/2013 22:32:44 9.000
11 Pump Displacement	7/16/2013 22:32:58 7.000	12 Bump Plug	7/16/2013 23:17:21 2729
13 Check Floats	7/16/2013 23:23:22 2773	14 Casing Test	7/16/2013 23:27:30 1604
15 Release Casing Pressure	7/16/2013 23:58:43 1871	16 End Job	7/17/2013 00:36:00 8.000
17 Ending Job	7/17/2013 00:38:31 4.000		

Customer: Job Date: 16-Jul-2013 Sales Order #: 900590260  
 Well Description: UWI:

---

**CONOCO/PHILLIPS COMPANY EBUSINESS**

---

**Zukowski 17-1H  
WILDCAT  
Arapahoe County , Colorado**

**Cement Production Liner**

**23-Jul-2013**

**Job Site Documents**

*The Road to Excellence Starts with Safety*

Sold To #: 352431	Ship To #: 3008551	Quote #:	Sales Order #: 900607900
Customer: CONOCO/PHILLIPS COMPANY EBUSINESS		Customer Rep: Evens, Wes	
Well Name: Zukowski	Well #: 17-1H	API/UWI #: 05005072080000	
Field: WILDCAT	City (SAP): AURORA	County/Parish: Arapahoe	State: Colorado
Legal Description: Section 17 Township 4S Range 64W			
Contractor: H&P		Rig/Platform Name/Num: H&P 280	
Job Purpose: Cement Production Liner			
Well Type: Development Well		Job Type: Cement Production Liner	
Sales Person: GROFF, THEODORE		Srcv Supervisor: NIELSON, BRANDON MBU ID Emp #: 479703	

**Job Personnel**

HES Emp Name	Exp Hrs	Emp #	HES Emp Name	Exp Hrs	Emp #	HES Emp Name	Exp Hrs	Emp #
BANUELOS, GUADALUPE	13.0	372277	BARNES, BRIAN L	13.0	485204	FRYE, KEVIN	13.0	498549
MAYFIELD, BYRON L	13.0	528751	NIELSON, BRANDON K	13.0	479703	OTERI, VAUGHN Steeves	13.0	443828
PETERSON, ERIC Eugene	4.0	213272	SALAZAR, JOSH	13.0	777771	SIMS, DENNIS A	12.0	158880

**Equipment**

HES Unit #	Distance-1 way	HES Unit #	Distance-1 way	HES Unit #	Distance-1 way	HES Unit #	Distance-1 way
11748359	38 mile	11812069C	38 mile	12010167	38 mile	12010172	38 mile
NA	38 mile						

**Job Hours**

Date	On Location Hours	Operating Hours	Date	On Location Hours	Operating Hours	Date	On Location Hours	Operating Hours

**TOTAL** Total is the sum of each column separately

Job				Job Times			
Formation Name	Formation Depth (MD)	Top	Bottom	Called Out	Date	Time	Time Zone
				On Location	22 - Jul - 2013	14:00	MST
Form Type	11935. ft		BHST	Job Started	22 - Jul - 2013	18:00	MST
Job depth MD			Job Depth TVD	Job Started	23 - Jul - 2013	01:42	MST
Water Depth			Wk Ht Above Floor	Job Completed	23 - Jul - 2013	04:15	MST
Perforation Depth (MD)	From	To		Departed Loc	23 - Jul - 2013	07:00	MST

**Well Data**

Description	New / Used	Max pressure psig	Size in	ID in	Weight lbm/ft	Thread	Grade	Top MD ft	Bottom MD ft	Top TVD ft	Bottom TVD ft
6" Open Hole				6.25				7902.	11935.		
4-1/2" Liner	New		4.5	3.92	13.5		P-110	6919.	11922.		
7" Casing	Unknown		7.	6.094	32.	BTC	P-110	.	7955.		
4" Drill Pipe	Unknown		4.	3.34	14.			.	6919.		

**Sales/Rental/3<sup>rd</sup> Party (HES)**

Description	Qty	Qty uom	Depth	Supplier
CENTRALIZER SLIDER II 4 1/2" x 6"	175	EA		
SOLID STOP COLLAR 4-1/2", #0412-00SO	350	EA		
MILEAGE FOR CEMENTING CREW,ZI	50	MI		

**Tools and Accessories**

Type	Size	Qty	Make	Depth	Type	Size	Qty	Make	Depth	Type	Size	Qty	Make
Guide Shoe					Packer					Top Plug			
Float Shoe					Bridge Plug					Bottom Plug			
Float Collar					Retainer					SSR plug set			
Insert Float										Plug Container			

Stage Tool										Centralizers																													
<b>Miscellaneous Materials</b>																																							
Gelling Agt					Conc					Surfactant					Conc					Acid Type					Qty					Conc %									
Treatment Fld					Conc					Inhibitor					Conc					Sand Type					Size					Qty									
<b>Fluid Data</b>																																							
<b>Stage/Plug #: 1</b>																																							
Fluid #	Stage Type	Fluid Name								Qty	Qty uom	Mixing Density lbm/gal	Yield ft <sup>3</sup> /sk	Mix Fluid Gal/sk	Rate bbl/min	Total Mix Fluid Gal/sk																							
1	Clean Spacer III									30.00	bbl	10.5	.0	.0	.0																								
2	EXPANDACEM B2	EXPANDACEM (TM) SYSTEM (452979)								345	sacks	13.8	1.68	7.74		7.74																							
7.74 Gal		FRESH WATER																																					
3	Displacement with MMCR									75	bbl	8.34	.0	.0	.0																								
0.1 gal/bbl		MICRO MATRIX CEMENT RETARDER, 5 GAL PAIL (100003781)																																					
4	Clean Spacer III									12	bbl	10.5	.0	.0	.0																								
5	Displacement									52.5	bbl	9.2	.0	.0	.0																								
<b>Calculated Values</b>					<b>Pressures</b>					<b>Volumes</b>																													
Displacement					Shut In: Instant					Lost Returns					0					Cement Slurry					Pad														
Top Of Cement					5 Min					Cement Returns					Actual Displacement					Treatment																			
Frac Gradient					15 Min					Spacers					0					Load and Breakdown					Total Job														
<b>Rates</b>																																							
Circulating					Mixing					Displacement					Avg. Job																								
Cement Left In Pipe					Amount 80 ft					Reason					Shoe Joint																								
Frac Ring # 1 @					ID					Frac ring # 2 @					ID					Frac Ring # 3 @					ID					Frac Ring # 4 @					ID				
The Information Stated Herein Is Correct										Customer Representative Signature																													

*The Road to Excellence Starts with Safety*

Sold To #: 352431	Ship To #: 3008551	Quote #:	Sales Order #: 900607900
Customer: CONOCO/PHILLIPS COMPANY EBUSINESS		Customer Rep: Evens, Wes	
Well Name: Zukowski	Well #: 17-1H	API/UWI #: 05005072080000	
Field: WILDCAT	City (SAP): AURORA	County/Parish: Arapahoe	State: Colorado
Legal Description: Section 17 Township 4S Range 64W			
Lat: N 0 deg. OR N 0 deg. 0 min. 0 secs.		Long: E 0 deg. OR E 0 deg. 0 min. 0 secs.	
Contractor: H&P	Rig/Platform Name/Num: H&P 280		
Job Purpose: Cement Production Liner			Ticket Amount:
Well Type: Development Well		Job Type: Cement Production Liner	
Sales Person: GROFF, THEODORE	Srvc Supervisor: NIELSON, BRANDON	MBU ID Emp #: 479703	

Activity Description	Date/Time	Cht #	Rate bbl/min	Volume bbl		Pressure psig		Comments
				Stage	Total	Tubing	Casing	
Start Job	07/23/2013 01:42							
Test Lines	07/23/2013 01:42							TESTED LINES TO 5000 PSI NO VISIBLE LEAKS.
Pump Spacer 1	07/23/2013 01:52		5	30			1509.0	CLEAN SPACER MIXED @ 10.5 PPG WITH FRESH WATER
Pump Cement	07/23/2013 02:05		5	103.2			600.0	345 SKS EXPANDACEM MIXED @ 13.8 PPG WITH FRESH WATER
Shutdown	07/23/2013 02:33							
Clean Lines	07/23/2013 02:35							WASHED PUMPS AND LINES TO AN OPEN TOP TANK
Drop Top Plug	07/23/2013 02:42							PLUG PRE LOADED BY BACKER HAND, DROPPED BY HALLIBURTON SUPERVISOR.
Pump Displacement	07/23/2013 02:42		5	75			2118.0	MMCR WATER. Pumped first 54 bbl at 5 bpm, slowed to 2 for 10 bbl, 11 at 5 bbl
Pump Spacer 1	07/23/2013 03:07		2.8	12			1584.0	CLEAN SPACER MIXED @ 10.5 PPG WITH FRESH WATER
Pump Displacement	07/23/2013 03:12		2	52.5			2222.0	WATER BASED DRILLING MUD. first 37 at 2 bpm, last 15.5 at 1 bpm.
Bump Plug	07/23/2013 03:42		1				1598.0	CALCULATED PRESSURE TO LAND WAS 1741 PSI

Sold To #: 352431

Ship To #: 3008551

Quote #:

Sales Order #: 900607900

SUMMIT Version: 7.3.0106

Tuesday, July 23, 2013 06:01:00

Activity Description	Date/Time	Cht #	Rate bbl/min	Volume bbl		Pressure psig		Comments
				Stage	Total	Tubing	Casing	
Check Floats	07/23/2013 03:53						2928. 0	FLAOTS HELD
Reverse Circ Well	07/23/2013 04:20							REVERSE CIRCULATE HOLE WITH THE RIG PUMPS

Sold To # : 352431

Ship To # :3008551

Quote # :

Sales Order # : 900607900

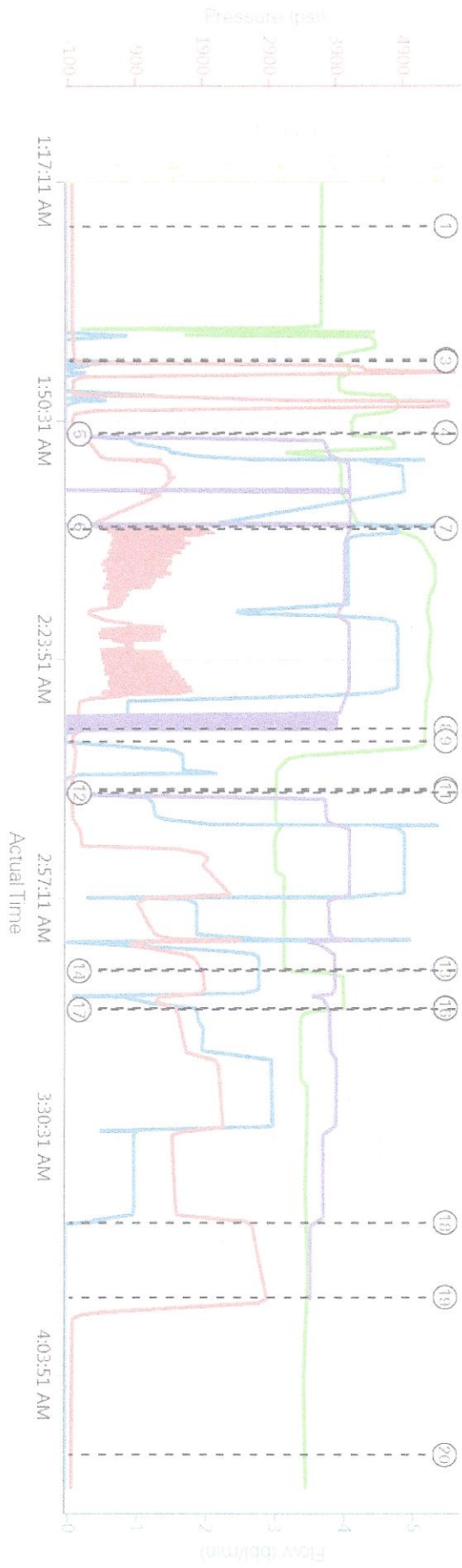
SUMMIT Version: 7.3.0106

Tuesday, July 23, 2013 06:01:00

1.1 Job Event Log

Time	Description	Graph Label	Downhole Density (ppg)	Combined Pump Rate (bbl/min)	Pass-Side Pump Pressure (psl)	Stage Volume (bbl)	Comment
01:23:38	Start Job	Start Job	9.74	0.00	1.00	0.00	
01:42:11	Start Job	Start Job	10.44	0.90	39.00	0.00	
01:42:25	Test Lines	Test Lines	10.56	0.10	1343.00	0.00	
01:52:24	Pump Spacer 1	Pump Spacer 1	10.89	0.00	9.00	0.00	
01:52:33	Next Stage	Conoco Tebo Spacer	10.91	0.90	10.00	0.00	
02:05:27	Next Stage	Conoco Tebo Primary	12.47	4.80	556.00	34.50	
02:05:46	Pump Cement	Pump Cement	12.84	4.80	2091.00	36.04	
02:33:43	Shutdown	Shutdown	13.69	0.00	53.00	47.59	
02:35:28	Clean Lines	Clean Lines	13.57	0.00	14.00	56.31	
02:42:08	Drop Top Plug	Drop Top Plug	8.04	0.00	2.00	76.87	
02:42:29	Pump Displacement	Pump Displacement	8.04	0.00	2.00	77.57	
02:42:40	Next Stage	MMCR Water	8.01	1.10	22.00	77.92	
03:07:18	Pump Spacer 1	Pump Spacer 1	8.33	2.80	1967.00	38.70	
03:07:34	Next Stage	Conoco Tebo Spacer	10.55	2.80	1994.00	38.96	
03:12:44	Pump Displacement	Pump Displacement	10.39	1.90	1596.00	44.14	
03:12:56	Next Stage	Conoco Tebo Mud	9.17	1.90	1598.00	44.34	
03:42:51	Bump Plug	Bump Plug	9.21	0.00	2701.00		
03:53:13	Other	Check Floats	9.20	0.00	2928.00		
04:15:14	End Job	End Job	9.19	0.00	-1.00		

### Custom Results



- ① Start Job
- ② Start Job
- ③ Test Lines
- ④ Pump Spacer 1
- ⑤ Conoco Tebo Spacer

- ⑥ Conoco Tebo Primary
- ⑦ Pump Cement
- ⑧ Shutdown
- ⑨ Clean Lines
- ⑩ Drop Top Plug

- ⑪ Pump Displacement
- ⑫ MMCR Water
- ⑬ Pump Spacer 1
- ⑭ Conoco Tebo Spacer
- ⑮ Pump Displacement

- ⑯ Pump Displacement
- ⑰ Conoco Tebo Mud
- ⑱ Bump Plug
- ⑲ Conoco Tebo Spacer
- ⑳ Check Floats
- ㉑ End Job

DH Density (ppg)    Comb Pump Rate (bbl/min)    PS Pump Press (psi)    Btmhole ECD (ppg)

# Material Roll Up

Sales Order #: 8267484  
 AFE #:  
 WO #:  
 PO #:

Crew: RED CREW  
 Requested Job Start Date: \_\_\_\_\_

## Colorado Oil and Gas Commission Wellsite Form

Customer: CONOCO PHILLIPS      Field: Wattenburg      Job Type: LINER  
 UWI / API Number:      County/Parish: ARAPAHOE      Service Supervisor: BRANDON NIELSON  
 Well Name: ZUKOWSKI      State: COLORADO  
 Well No: 17-1H      Latitude:  
 Stage / Zone:      Longitude:      Cust Rep Name:  
 Formation:      Sect / TwN / Rng: / /      Cust Rep Phone #: (

**Do Not leave the yard without the proper MSDS documentation for All chemicals.**

Colorado Oil and Gas Commission					
Material	Delivered to Location	UOM	Specific Gravity	Weight (lbs)	Comment
CLEAN SPACER	7-23-13	LB		6173	
EXPANDACEM	7-23-13	LB		37530	
MMCR	7-23-13	GAL		8	
		GAL			
		GAL			
		Gal			
		LB			

Operator provided all Material Safety Data Sheets (MSDS) related to material listed above.  
 Operator representative will check box to designate he/she has received all MSDS documentation.

\_\_\_\_\_  
 Operator Representative Signature