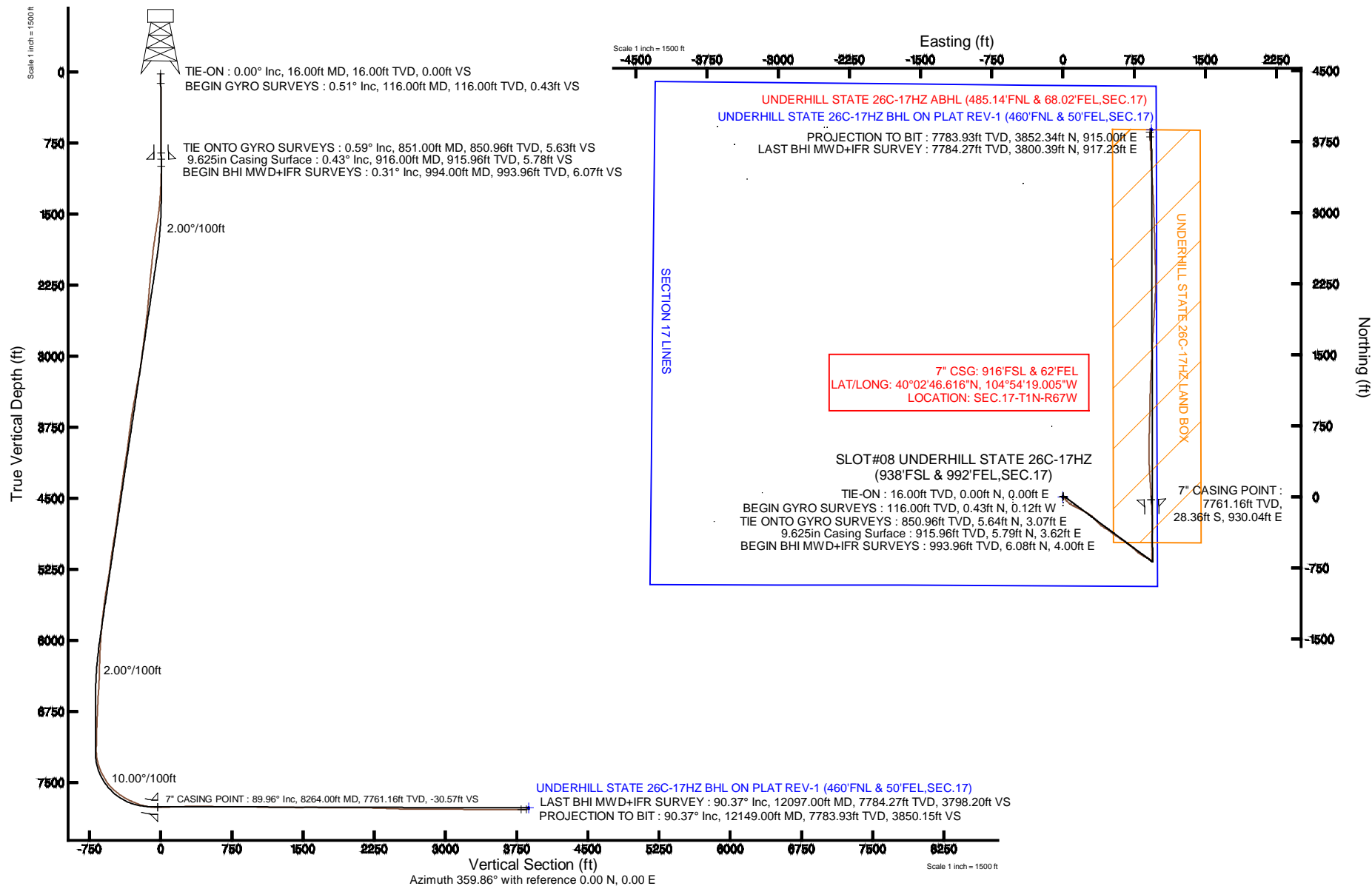


# KERR-MCGEE OIL & GAS ONSHORE LP

Location: COLORADO Slot: SLOT#08 UNDERHILL STATE 26C-17HZ (938'FSL & 992'FEL,SEC.17)  
 Field: WELD COUNTY (KERR MCGEE) Well: UNDERHILL STATE 26C-17HZ  
 Facility: SEC.17-T1N-R67W Wellbore: UNDERHILL STATE 26C-17HZ PWB

Plot reference wellpath is UNDERHILL STATE 26C-17HZ (REV-B.0) PWP

True vertical depths are referenced to XTREME 24 (16KB) (RKB)	Grid System: NAD83 / Lambert Colorado SP, Northern Zone (501), US feet
Measured depths are referenced to XTREME 24 (16KB) (RKB)	North Reference: True north
XTREME 24 (16KB) (RKB) to Mean Sea Level: 5119 feet	Scale: True distance
Mean Sea Level to Mud line (At Slot: SLOT#08 UNDERHILL STATE 26C-17HZ (938'FSL & 992'FEL,SEC.17)): 0 feet	Depths are in feet
Coordinates are in feet referenced to Slot	Created by: robiale01 on 11/Oct/2013



## REFERENCE WELLPATH IDENTIFICATION

Operator	KERR-MCGEE OIL & GAS ONSHORE LP	Slot	SLOT#08 UNDERHILL STATE 26C-17HZ (938'FSL & 992'FEL,
Area	COLORADO	Well	UNDERHILL STATE 26C-17HZ
Field	WELD COUNTY (KERR MCGEE)	Wellbore	UNDERHILL STATE 26C-17HZ AWB
Facility	SEC.17-T1N-R67W		

## REPORT SETUP INFORMATION

Projection System	NAD83 / Lambert Colorado SP, Northern Zone (501), US feet	Software System	WellArchitect® 4.0.0
North Reference	True	User	Robiale01
Scale	0.999963	Report Generated	11/Oct/2013 at 09:08
Convergence at slot	n/a	Database/Source file	WA_ANADARKO/UNDERHILL_STATE_26C-17HZ_AWB.xml

## WELLPATH LOCATION

	Local coordinates		Grid coordinates		Geographic coordinates	
	North[ft]	East[ft]	Easting[US ft]	Northing[US ft]	Latitude	Longitude
Slot Location	-1713.60	1667.73	3165568.67	1260286.72	40°02'46.896"N	104°54'30.964"W
Facility Reference Pt			3163889.72	1261989.21	40°03'03.831"N	104°54'52.408"W
Field Reference Pt			3197771.84	1268891.29	40°04'09.600"N	104°47'36.000"W

## WELLPATH DATUM

Calculation method	Minimum curvature	XTREME 24 (16'KB) (RKB) to Facility Vertical Datum	5119.00ft
Horizontal Reference Pt	Slot	XTREME 24 (16'KB) (RKB) to Mean Sea Level	5119.00ft
Vertical Reference Pt	XTREME 24 (16'KB) (RKB)	XTREME 24 (16'KB) (RKB) to Mud Line at Slot (SLOT#08 UNDERHILL STATE 26C-17HZ (938'FSL & 992'FEL,SEC.17))	5119.00ft
MD Reference Pt	XTREME 24 (16'KB) (RKB)	Section Origin	N 0.00, E 0.00 ft
Field Vertical Reference	Mean Sea Level	Section Azimuth	13.36°

## REFERENCE WELLPATH IDENTIFICATION

Operator	KERR-MCGEE OIL & GAS ONSHORE LP	Slot	SLOT#08 UNDERHILL STATE 26C-17HZ (938'FSL & 992'FEL,
Area	COLORADO	Well	UNDERHILL STATE 26C-17HZ
Field	WELD COUNTY (KERR MCGEE)	Wellbore	UNDERHILL STATE 26C-17HZ AWP
Facility	SEC.17-T1N-R67W		

## WELLPATH DATA (154 stations) † = interpolated/extrapolated station

MD [ft]	Inclination [°]	Azimuth [°]	TVD [ft]	Vert Sect [ft]	North [ft]	East [ft]	Latitude	Longitude	DLS [°/100ft]	Comments
0.00†	0.000	344.470	0.00	0.00	0.00	0.00	40°02'46.896"N	104°54'30.964"W	0.00	
16.00	0.000	344.470	16.00	0.00	0.00	0.00	40°02'46.896"N	104°54'30.964"W	0.00	TIE-ON
116.00	0.510	344.470	116.00	0.39	0.43	-0.12	40°02'46.900"N	104°54'30.966"W	0.51	BEGIN GYRO SURVEYS
216.00	0.350	69.850	216.00	0.95	0.96	0.05	40°02'46.906"N	104°54'30.963"W	0.59	
316.00	0.610	43.670	315.99	1.58	1.45	0.70	40°02'46.910"N	104°54'30.955"W	0.33	
416.00	0.750	353.710	415.99	2.65	2.49	1.00	40°02'46.921"N	104°54'30.951"W	0.59	
516.00	0.690	1.130	515.98	3.86	3.74	0.94	40°02'46.933"N	104°54'30.952"W	0.11	
616.00	0.580	77.840	615.97	4.66	4.45	1.45	40°02'46.940"N	104°54'30.945"W	0.79	
716.00	0.590	22.380	715.97	5.39	5.03	2.14	40°02'46.946"N	104°54'30.937"W	0.54	
816.00	0.480	79.770	815.97	6.07	5.58	2.74	40°02'46.951"N	104°54'30.929"W	0.52	
851.00	0.590	80.620	850.96	6.19	5.64	3.07	40°02'46.952"N	104°54'30.925"W	0.32	TIE ONTO GYRO SURVEYS
994.00	0.310	32.900	993.96	6.84	6.08	4.00	40°02'46.956"N	104°54'30.913"W	0.31	BEGIN BHI MWD+IFR SURVEYS
1088.00	2.300	124.570	1087.94	6.40	5.23	5.69	40°02'46.948"N	104°54'30.891"W	2.48	
1182.00	4.170	129.780	1181.78	4.20	1.97	9.87	40°02'46.915"N	104°54'30.837"W	2.01	
1276.00	3.460	160.370	1275.58	0.30	-2.89	13.45	40°02'46.867"N	104°54'30.791"W	2.26	
1370.00	5.500	152.590	1369.29	-5.49	-9.56	16.48	40°02'46.802"N	104°54'30.752"W	2.26	
1464.00	7.660	152.860	1462.67	-13.67	-19.14	21.41	40°02'46.707"N	104°54'30.689"W	2.30	
1558.00	10.240	144.120	1555.52	-23.89	-31.48	29.17	40°02'46.585"N	104°54'30.589"W	3.09	
1652.00	12.630	134.070	1647.65	-34.60	-45.41	41.45	40°02'46.447"N	104°54'30.431"W	3.30	
1747.00	13.200	130.730	1740.25	-44.89	-59.71	57.14	40°02'46.306"N	104°54'30.229"W	0.99	
1841.00	12.750	124.910	1831.86	-53.63	-72.65	73.78	40°02'46.178"N	104°54'30.015"W	1.47	
1935.00	12.320	120.410	1923.62	-60.38	-83.66	90.93	40°02'46.069"N	104°54'29.795"W	1.13	
2030.00	11.270	117.000	2016.61	-65.54	-93.00	107.94	40°02'45.977"N	104°54'29.576"W	1.33	
2121.00	12.290	119.190	2105.69	-70.28	-101.77	124.32	40°02'45.890"N	104°54'29.365"W	1.22	
2212.00	11.730	118.380	2194.70	-75.32	-110.89	140.92	40°02'45.800"N	104°54'29.152"W	0.64	
2303.00	11.140	115.370	2283.90	-79.55	-119.05	157.00	40°02'45.720"N	104°54'28.945"W	0.92	
2395.00	10.300	115.960	2374.29	-83.19	-126.46	172.42	40°02'45.646"N	104°54'28.747"W	0.92	
2486.00	11.370	114.220	2463.67	-86.65	-133.70	187.92	40°02'45.575"N	104°54'28.548"W	1.23	
2576.00	12.900	119.120	2551.65	-91.05	-142.23	204.79	40°02'45.490"N	104°54'28.331"W	2.05	
2667.00	13.410	117.930	2640.27	-96.47	-152.11	222.99	40°02'45.393"N	104°54'28.097"W	0.63	
2759.00	13.740	119.480	2729.70	-102.18	-162.49	241.92	40°02'45.290"N	104°54'27.853"W	0.53	
2850.00	13.450	124.310	2818.15	-108.97	-173.77	260.07	40°02'45.179"N	104°54'27.620"W	1.29	
2941.00	11.880	122.910	2906.93	-115.89	-184.83	276.68	40°02'45.069"N	104°54'27.406"W	1.76	
3032.00	12.070	124.800	2995.95	-122.50	-195.35	292.36	40°02'44.966"N	104°54'27.205"W	0.48	
3124.00	13.100	132.880	3085.75	-131.15	-207.93	307.90	40°02'44.841"N	104°54'27.005"W	2.21	
3215.00	14.230	136.230	3174.17	-142.30	-223.03	323.19	40°02'44.692"N	104°54'26.808"W	1.52	
3307.00	14.320	138.460	3263.33	-154.98	-239.71	338.56	40°02'44.527"N	104°54'26.611"W	0.61	
3399.00	13.860	137.280	3352.56	-167.67	-256.32	353.58	40°02'44.363"N	104°54'26.418"W	0.59	
3490.00	14.140	133.030	3440.86	-179.26	-271.91	369.10	40°02'44.209"N	104°54'26.218"W	1.17	
3581.00	14.920	132.050	3528.95	-190.38	-287.34	385.92	40°02'44.056"N	104°54'26.002"W	0.90	
3674.00	14.770	127.520	3618.85	-200.98	-302.58	404.22	40°02'43.906"N	104°54'25.767"W	1.26	
3767.00	14.480	123.070	3708.84	-209.76	-316.15	423.36	40°02'43.772"N	104°54'25.520"W	1.25	
3860.00	13.440	120.160	3799.09	-216.80	-327.92	442.45	40°02'43.655"N	104°54'25.275"W	1.35	
3954.00	13.770	120.960	3890.46	-223.34	-339.17	461.49	40°02'43.544"N	104°54'25.030"W	0.40	
4047.00	13.850	125.520	3980.77	-230.89	-351.33	480.04	40°02'43.424"N	104°54'24.792"W	1.17	

## REFERENCE WELLPATH IDENTIFICATION

Operator	KERR-MCGEE OIL & GAS ONSHORE LP	Slot	SLOT#08 UNDERHILL STATE 26C-17HZ (938'FSL & 992'FEL,
Area	COLORADO	Well	UNDERHILL STATE 26C-17HZ
Field	WELD COUNTY (KERR MCGEE)	Wellbore	UNDERHILL STATE 26C-17HZ AWP
Facility	SEC.17-T1N-R67W		

## WELLPATH DATA (154 stations)

MD [ft]	Inclination [°]	Azimuth [°]	TVD [ft]	Vert Sect [ft]	North [ft]	East [ft]	Latitude	Longitude	DLS [°/100ft]	Comments
4141.00	13.860	128.550	4072.04	-239.92	-364.88	498.00	40°02'43.290"N	104°54'24.561"W	0.77	
4234.00	14.720	126.140	4162.16	-249.24	-378.79	516.26	40°02'43.153"N	104°54'24.326"W	1.12	
4327.00	13.040	127.510	4252.44	-258.11	-392.15	534.12	40°02'43.021"N	104°54'24.096"W	1.84	
4421.00	13.640	124.200	4343.91	-266.39	-404.84	551.70	40°02'42.895"N	104°54'23.870"W	1.03	
4514.00	15.100	123.050	4433.99	-274.37	-417.61	570.93	40°02'42.769"N	104°54'23.623"W	1.60	
4607.00	13.860	125.220	4524.04	-282.60	-430.64	590.18	40°02'42.640"N	104°54'23.375"W	1.46	
4701.00	13.670	122.860	4615.34	-290.50	-443.16	608.71	40°02'42.517"N	104°54'23.137"W	0.63	
4786.00	13.890	124.160	4697.89	-297.47	-454.34	625.59	40°02'42.406"N	104°54'22.920"W	0.45	
4871.00	14.960	124.240	4780.21	-305.01	-466.24	643.10	40°02'42.288"N	104°54'22.695"W	1.26	
4957.00	14.700	126.350	4863.35	-313.22	-478.95	661.07	40°02'42.163"N	104°54'22.464"W	0.70	
5042.00	14.690	127.730	4945.57	-321.88	-491.94	678.28	40°02'42.034"N	104°54'22.243"W	0.41	
5127.00	13.680	129.280	5027.98	-330.72	-504.90	694.58	40°02'41.906"N	104°54'22.033"W	1.27	
5212.00	11.690	129.910	5110.90	-338.97	-516.79	708.97	40°02'41.789"N	104°54'21.848"W	2.35	
5297.00	11.620	125.890	5194.15	-346.10	-527.33	722.51	40°02'41.685"N	104°54'21.674"W	0.96	
5383.00	13.050	130.550	5278.16	-353.85	-538.72	736.90	40°02'41.572"N	104°54'21.489"W	2.02	
5468.00	15.230	131.730	5360.58	-363.54	-552.39	752.53	40°02'41.437"N	104°54'21.288"W	2.59	
5553.00	14.270	131.350	5442.78	-373.76	-566.75	768.73	40°02'41.295"N	104°54'21.080"W	1.14	
5638.00	12.820	130.630	5525.41	-383.00	-579.81	783.75	40°02'41.166"N	104°54'20.887"W	1.72	
5723.00	13.010	127.030	5608.26	-391.16	-591.71	798.54	40°02'41.048"N	104°54'20.696"W	0.97	
5808.00	12.120	123.080	5691.23	-398.01	-602.35	813.66	40°02'40.943"N	104°54'20.502"W	1.45	
5893.00	11.200	121.640	5774.47	-403.61	-611.55	828.16	40°02'40.852"N	104°54'20.315"W	1.14	
5978.00	9.890	121.000	5858.04	-408.42	-619.64	841.45	40°02'40.772"N	104°54'20.145"W	1.55	
6064.00	8.500	118.730	5942.93	-412.34	-626.50	853.36	40°02'40.705"N	104°54'19.992"W	1.67	
6149.00	7.450	115.620	6027.11	-415.17	-631.90	863.83	40°02'40.651"N	104°54'19.857"W	1.34	
6234.00	6.720	114.570	6111.46	-417.31	-636.35	873.32	40°02'40.607"N	104°54'19.735"W	0.87	
6319.00	5.060	110.890	6196.01	-418.77	-639.75	881.35	40°02'40.574"N	104°54'19.632"W	2.00	
6405.00	3.470	104.330	6281.76	-419.31	-641.75	887.42	40°02'40.554"N	104°54'19.554"W	1.93	
6490.00	3.630	117.730	6366.60	-420.02	-643.64	892.29	40°02'40.535"N	104°54'19.491"W	0.99	
6575.00	4.880	130.070	6451.37	-422.31	-647.22	897.44	40°02'40.500"N	104°54'19.425"W	1.81	
6660.00	5.550	138.810	6536.02	-426.32	-652.64	902.91	40°02'40.446"N	104°54'19.354"W	1.22	
6746.00	4.160	138.770	6621.71	-430.54	-658.12	907.71	40°02'40.392"N	104°54'19.293"W	1.62	
6831.00	3.830	127.130	6706.50	-433.47	-662.15	912.00	40°02'40.352"N	104°54'19.237"W	1.03	
6916.00	4.070	128.200	6791.30	-435.88	-665.73	916.64	40°02'40.317"N	104°54'19.178"W	0.30	
7001.00	3.850	123.590	6876.10	-438.14	-669.17	921.38	40°02'40.283"N	104°54'19.117"W	0.46	
7087.00	3.230	126.390	6961.93	-440.08	-672.21	925.74	40°02'40.253"N	104°54'19.061"W	0.75	
7172.00	2.400	123.710	7046.83	-441.64	-674.61	929.15	40°02'40.229"N	104°54'19.017"W	0.99	
7214.00	2.420	119.170	7088.79	-442.19	-675.53	930.65	40°02'40.220"N	104°54'18.998"W	0.46	
7257.00	2.230	112.540	7131.76	-442.57	-676.30	932.22	40°02'40.212"N	104°54'18.978"W	0.77	
7300.00	2.220	43.530	7174.73	-441.98	-676.01	933.57	40°02'40.215"N	104°54'18.960"W	5.86	
7342.00	6.480	7.120	7216.61	-438.92	-673.07	934.42	40°02'40.244"N	104°54'18.949"W	11.60	
7385.00	11.340	2.230	7259.08	-432.36	-666.44	934.89	40°02'40.310"N	104°54'18.943"W	11.43	
7427.00	15.960	2.320	7299.88	-422.63	-656.53	935.28	40°02'40.408"N	104°54'18.938"W	11.00	
7470.00	19.930	4.350	7340.78	-409.59	-643.31	936.08	40°02'40.538"N	104°54'18.928"W	9.35	
7512.00	23.540	4.070	7379.79	-394.23	-627.81	937.21	40°02'40.692"N	104°54'18.913"W	8.60	
7555.00	26.510	1.350	7418.75	-376.37	-609.64	938.05	40°02'40.871"N	104°54'18.903"W	7.41	

# Actual Wellpath Report

UNDERHILL STATE 26C-17HZ AWP

Page 4 of 7

## REFERENCE WELLPATH IDENTIFICATION

Operator	KERR-MCGEE OIL & GAS ONSHORE LP	Slot	SLOT#08 UNDERHILL STATE 26C-17HZ (938'FSL & 992'FEL,
Area	COLORADO	Well	UNDERHILL STATE 26C-17HZ
Field	WELD COUNTY (KERR MCGEE)	Wellbore	UNDERHILL STATE 26C-17HZ AWP
Facility	SEC.17-T1N-R67W		

## WELLPATH DATA (154 stations) † = interpolated/extrapolated station

MD [ft]	Inclination [°]	Azimuth [°]	TVD [ft]	Vert Sect [ft]	North [ft]	East [ft]	Latitude	Longitude	DLS [°/100ft]	Comments
7597.00	30.380	0.940	7455.67	-356.82	-589.64	938.45	40°02'41.069"N	104°54'18.897"W	9.23	
7639.00	34.480	359.400	7491.11	-334.90	-567.13	938.49	40°02'41.291"N	104°54'18.897"W	9.96	
7682.00	39.310	358.580	7525.49	-309.90	-541.32	938.03	40°02'41.546"N	104°54'18.903"W	11.29	
7725.00	44.030	359.190	7557.60	-282.23	-512.75	937.48	40°02'41.829"N	104°54'18.910"W	11.02	
7767.00	48.550	0.110	7586.62	-252.74	-482.40	937.30	40°02'42.129"N	104°54'18.912"W	10.88	
7809.00	53.380	0.090	7613.06	-221.00	-449.79	937.36	40°02'42.451"N	104°54'18.911"W	11.50	
7852.00	56.890	1.200	7637.64	-186.59	-414.51	937.77	40°02'42.800"N	104°54'18.906"W	8.43	
7894.00	59.230	1.640	7659.86	-151.72	-378.88	938.65	40°02'43.152"N	104°54'18.895"W	5.64	
7937.00	62.410	1.620	7680.82	-114.96	-341.36	939.72	40°02'43.522"N	104°54'18.881"W	7.40	
7979.00	66.140	359.880	7699.05	-78.05	-303.54	940.20	40°02'43.896"N	104°54'18.875"W	9.63	
8022.00	69.150	359.550	7715.40	-39.41	-263.77	940.01	40°02'44.289"N	104°54'18.877"W	7.04	
8064.00	70.730	359.260	7729.81	-1.12	-224.32	939.60	40°02'44.679"N	104°54'18.882"W	3.82	
8107.00	73.750	357.580	7742.92	38.44	-183.40	938.46	40°02'45.083"N	104°54'18.897"W	7.95	
8150.00	78.730	356.950	7753.15	78.55	-141.69	936.47	40°02'45.496"N	104°54'18.923"W	11.67	
8192.00	85.070	357.160	7759.06	118.44	-100.19	934.33	40°02'45.906"N	104°54'18.950"W	15.10	
8216.00	88.330	356.150	7760.44	141.38	-76.27	932.93	40°02'46.142"N	104°54'18.968"W	14.22	
8264.00†	89.955	356.946	7761.16	187.32	-28.36	930.04	40°02'46.616"N	104°54'19.005"W	3.77	7" CASING POINT
8304.00	91.310	357.610	7760.72	225.76	11.59	928.14	40°02'47.010"N	104°54'19.030"W	3.77	
8389.00	91.720	355.900	7758.47	307.18	96.42	923.34	40°02'47.849"N	104°54'19.091"W	2.07	
8475.00	92.130	355.870	7755.58	389.16	182.15	917.17	40°02'48.696"N	104°54'19.171"W	0.48	
8560.00	91.290	356.680	7753.05	470.37	266.93	911.65	40°02'49.534"N	104°54'19.242"W	1.37	
8645.00	89.870	357.810	7752.19	552.03	351.82	907.56	40°02'50.373"N	104°54'19.294"W	2.13	
8730.00	89.900	359.670	7752.36	634.27	436.80	905.69	40°02'51.212"N	104°54'19.318"W	2.19	
8816.00	89.230	0.890	7753.01	718.03	522.79	906.11	40°02'52.062"N	104°54'19.313"W	1.62	
8901.00	89.810	0.840	7753.72	801.02	607.78	907.40	40°02'52.902"N	104°54'19.296"W	0.68	
8986.00	88.670	1.720	7754.85	884.12	692.75	909.30	40°02'53.742"N	104°54'19.272"W	1.69	
9071.00	89.290	1.530	7756.36	967.33	777.70	911.71	40°02'54.581"N	104°54'19.241"W	0.76	
9156.00	89.780	1.340	7757.05	1050.50	862.67	913.83	40°02'55.421"N	104°54'19.213"W	0.62	
9241.00	89.350	0.890	7757.70	1133.56	947.65	915.49	40°02'56.261"N	104°54'19.192"W	0.73	
9326.00	89.590	1.140	7758.48	1216.59	1032.63	916.99	40°02'57.101"N	104°54'19.172"W	0.41	
9412.00	90.270	1.640	7758.59	1300.72	1118.61	919.08	40°02'57.950"N	104°54'19.146"W	0.98	
9496.00	89.900	2.120	7758.46	1383.04	1202.56	921.84	40°02'58.780"N	104°54'19.110"W	0.72	
9582.00	88.300	4.000	7759.81	1467.63	1288.42	926.43	40°02'59.628"N	104°54'19.051"W	2.87	
9667.00	88.050	1.940	7762.52	1551.19	1373.26	930.83	40°03'00.467"N	104°54'18.994"W	2.44	
9752.00	90.330	2.320	7763.72	1634.55	1458.19	933.99	40°03'01.306"N	104°54'18.954"W	2.72	
9841.00	90.670	3.370	7762.95	1722.05	1547.07	938.40	40°03'02.184"N	104°54'18.897"W	1.24	
9926.00	89.160	3.270	7763.07	1805.75	1631.93	943.33	40°03'03.023"N	104°54'18.834"W	1.78	
9989.00	88.940	2.520	7764.12	1867.69	1694.84	946.51	40°03'03.645"N	104°54'18.793"W	1.24	
10074.00	90.270	4.310	7764.70	1951.41	1779.68	951.57	40°03'04.483"N	104°54'18.728"W	2.62	
10160.00	89.960	3.130	7764.53	2036.19	1865.50	957.15	40°03'05.331"N	104°54'18.656"W	1.42	
10245.00	89.960	3.590	7764.59	2119.90	1950.35	962.13	40°03'06.170"N	104°54'18.592"W	0.54	
10330.00	90.120	3.670	7764.53	2203.67	2035.18	967.51	40°03'07.008"N	104°54'18.522"W	0.21	
10415.00	88.290	2.320	7765.71	2287.27	2120.05	971.95	40°03'07.847"N	104°54'18.465"W	2.68	
10501.00	88.980	1.880	7767.76	2371.59	2205.97	975.10	40°03'08.696"N	104°54'18.425"W	0.95	
10586.00	88.030	0.130	7769.98	2454.59	2290.92	976.59	40°03'09.535"N	104°54'18.405"W	2.34	



## REFERENCE WELLPATH IDENTIFICATION

Operator	KERR-MCGEE OIL & GAS ONSHORE LP	Slot	SLOT#08 UNDERHILL STATE 26C-17HZ (938'FSL & 992'FEL,
Area	COLORADO	Well	UNDERHILL STATE 26C-17HZ
Field	WELD COUNTY (KERR MCGEE)	Wellbore	UNDERHILL STATE 26C-17HZ AWP
Facility	SEC.17-T1N-R67W		

## WELLPATH DATA (154 stations)

MD [ft]	Inclination [°]	Azimuth [°]	TVD [ft]	Vert Sect [ft]	North [ft]	East [ft]	Latitude	Longitude	DLS [°/100ft]	Comments
10671.00	87.460	358.340	7773.32	2536.95	2375.84	975.46	40°03'10.374"N	104°54'18.420"W	2.21	
10756.00	87.650	358.090	7776.95	2618.93	2460.73	972.82	40°03'11.213"N	104°54'18.454"W	0.37	
10842.00	88.920	358.430	7779.52	2701.92	2546.65	970.21	40°03'12.062"N	104°54'18.487"W	1.53	
10927.00	88.450	358.600	7781.47	2784.06	2631.59	968.00	40°03'12.902"N	104°54'18.516"W	0.59	
11012.00	89.780	358.240	7782.78	2866.17	2716.55	965.66	40°03'13.741"N	104°54'18.546"W	1.62	
11097.00	90.300	357.770	7782.72	2948.14	2801.50	962.70	40°03'14.581"N	104°54'18.584"W	0.82	
11182.00	90.150	358.710	7782.39	3030.19	2886.46	960.09	40°03'15.420"N	104°54'18.617"W	1.12	
11267.00	89.870	358.510	7782.38	3112.39	2971.43	958.03	40°03'16.260"N	104°54'18.644"W	0.40	
11352.00	89.840	357.170	7782.59	3194.29	3056.37	954.82	40°03'17.100"N	104°54'18.685"W	1.58	
11437.00	89.590	357.490	7783.01	3275.98	3141.27	950.87	40°03'17.939"N	104°54'18.736"W	0.48	
11522.00	89.590	356.870	7783.62	3357.61	3226.17	946.68	40°03'18.778"N	104°54'18.790"W	0.73	
11607.00	89.500	356.300	7784.30	3438.99	3311.01	941.62	40°03'19.616"N	104°54'18.855"W	0.68	
11692.00	89.720	356.760	7784.88	3520.35	3395.86	936.48	40°03'20.454"N	104°54'18.921"W	0.60	
11777.00	89.660	356.850	7785.34	3601.82	3480.72	931.74	40°03'21.293"N	104°54'18.982"W	0.13	
11862.00	90.210	357.140	7785.43	3683.38	3565.61	927.28	40°03'22.132"N	104°54'19.039"W	0.73	
11947.00	90.300	357.920	7785.05	3765.15	3650.53	923.62	40°03'22.971"N	104°54'19.086"W	0.92	
12032.00	90.270	357.360	7784.63	3846.97	3735.45	920.12	40°03'23.810"N	104°54'19.131"W	0.66	
12097.00	90.370	357.540	7784.27	3909.48	3800.39	917.23	40°03'24.452"N	104°54'19.168"W	0.32	LAST BHI MWD+IFR SURVEY
12149.00	90.370	357.540	7783.93	3959.51	3852.34	915.00	40°03'24.966"N	104°54'19.197"W	0.00	PROJECTION TO BIT

## HOLE & CASING SECTIONS -

Ref Wellbore: UNDERHILL STATE 26C-17HZ AWP      Ref Wellpath: UNDERHILL STATE 26C-17HZ AWP

String/Diameter	Start MD [ft]	End MD [ft]	Interval [ft]	Start TVD [ft]	End TVD [ft]	Start N/S [ft]	Start E/W [ft]	End N/S [ft]	End E/W [ft]
13.5in Open Hole	16.00	916.00	900.00	16.00	915.96	0.00	0.00	5.79	3.62
9.625in Casing Surface	16.00	916.00	900.00	16.00	915.96	0.00	0.00	5.79	3.62
8.75in Open Hole	916.00	8275.00	7359.00	915.96	7761.13	5.79	3.62	-17.38	929.48
7in Casing Intermediate	16.00	8264.00	8248.00	16.00	7761.16	0.00	0.00	-28.36	930.04
6.125in Open Hole	8275.00	12149.00	3874.00	7761.13	7783.93	-17.38	929.48	3852.34	915.00



# Actual Wellpath Report

UNDERHILL STATE 26C-17HZ AWP

Page 6 of 7



## REFERENCE WELLPATH IDENTIFICATION

Operator	KERR-MCGEE OIL & GAS ONSHORE LP	Slot	SLOT#08 UNDERHILL STATE 26C-17HZ (938'FSL & 992'FEL,
Area	COLORADO	Well	UNDERHILL STATE 26C-17HZ
Field	WELD COUNTY (KERR MCGEE)	Wellbore	UNDERHILL STATE 26C-17HZ AWB
Facility	SEC.17-T1N-R67W		

## TARGETS

Name	MD [ft]	TVD [ft]	North [ft]	East [ft]	Grid East [US ft]	Grid North [US ft]	Latitude	Longitude	Shape
UNDERHILL 15-17 PAD SECTION 17 LINES		5119.00	-86.70	-528.56	3165040.71	1260196.51	40°02'46.039"N	104°54'37.760"W	polygon
UNDERHILL STATE 26C-17HZ BHL ON PLAT REV-1 (460'FNL & 50'FEL,SEC.17)		7768.00	3877.48	933.02	3166475.77	1264170.19	40°03'25.214"N	104°54'18.965"W	point
UNDERHILL STATE 26C-17HZ LAND BOX		7800.00	0.00	0.00	3165568.67	1260286.72	40°02'46.896"N	104°54'30.964"W	polygon

## WELLPATH COMPOSITION -

Ref Wellbore: UNDERHILL STATE 26C-17HZ AWB			Ref Wellpath: UNDERHILL STATE 26C-17HZ AWP		
Start MD [ft]	End MD [ft]	Positional Uncertainty Model	Log Name/Comment	Wellbore	
16.00	851.00	Generic gyro - continuous (Standard)	MS GYRODATA SURVEYS <116-851>	UNDERHILL STATE 26C-17HZ AWB	
851.00	8216.00	NaviTrak (MAGCORR,IFR)	BHI NAVITRAK MWD+IFR 8 3/4" <944-8216>	UNDERHILL STATE 26C-17HZ AWB	
8216.00	9752.00	OnTrak (MAGCORR,IFR)	BHI ONTRAK MWD+IFR 6 1/8" <8304-9752>	UNDERHILL STATE 26C-17HZ AWB	
9752.00	12097.00	NaviTrak (MAGCORR,IFR)	BHI NAVITRAK MWD+IFR 6 1/8" <9841-12097>	UNDERHILL STATE 26C-17HZ AWB	
12097.00	12149.00	Blind Drilling (std)	Projection to bit	UNDERHILL STATE 26C-17HZ AWB	



# Actual Wellpath Report

UNDERHILL STATE 26C-17HZ AWP

Page 7 of 7



## REFERENCE WELLPATH IDENTIFICATION

Operator	KERR-MCGEE OIL & GAS ONSHORE LP	Slot	SLOT#08 UNDERHILL STATE 26C-17HZ (938'FSL & 992'FEL,
Area	COLORADO	Well	UNDERHILL STATE 26C-17HZ
Field	WELD COUNTY (KERR MCGEE)	Wellbore	UNDERHILL STATE 26C-17HZ AWP
Facility	SEC.17-T1N-R67W		

## WELLPATH COMMENTS

MD [ft]	Inclination [°]	Azimuth [°]	TVD [ft]	Comment
16.00	0.000	344.470	16.00	TIE-ON
116.00	0.510	344.470	116.00	BEGIN GYRO SURVEYS
851.00	0.590	80.620	850.96	TIE ONTO GYRO SURVEYS
994.00	0.310	32.900	993.96	BEGIN BHI MWD+IFR SURVEYS
8264.00	89.955	356.946	7761.16	7" CASING POINT
12097.00	90.370	357.540	7784.27	LAST BHI MWD+IFR SURVEY
12149.00	90.370	357.540	7783.93	PROJECTION TO BIT