



Realtime Log

Natural Formation Evaluation
Gamma Ray

Scale: **Company: Anadarko**

1:240 **Well: Underhill State 26C-17HZ**

True Vertical Depth **Field: Weld County (Kerr McGee)**

Region: Rocky Mountains Country: United States

Status: **Field Print** Surface Location: **Other Services:**

API Number: 051233690500

SEC: 17 TWN: 1N RGE: 67W

Directional

Permanent Datum (P.D.): Ground Level Elevation: 5103.00 ft.

Log Measured From: Rig Floor 15.00 ft. Above P.D.

Depth Reference: Driller's Depth Elevations: N/A
KB: 5119.00 ft.
DF: 5103.00 ft.
GL:

Interval Logged Dates Magnetic Field Reference

Top: 7230 ft. Date From: 18/Jul/2013 Dip Angle: 66.50 ° Azi Reference North: True

Bottom: 8220 ft. Date To: 19/Jul/2013 Total Mag to Reference

Spud Date: 16/Jul/2013 Field Strength: 52926.0 nT North Correction: 8.51 °

Borehole Record Casing Record

Hole Size	From	To	Size	Weight	From	To
8.750 in.	926 ft.	8275 ft.	9.625 in.	36.00 lb/ft	Surface	913 ft.

Mud Record Deviation Record

Type	From	To	Hole Size	Interval	Inc / Az (Start)	Inc / Az (End)
Drill Water	Surface	7086 ft.	8.750 in.	85 ft.	0.3 ° / 32.9 °	2.4 ° / 119.2 °
LSND	7086 ft.	8275 ft.	8.750 in.	42 ft.	2.4 ° / 119.2 °	88.3 ° / 356.1 °
					/	/
					/	/
					/	/
					/	/
					/	/
					/	/

Acquisition System Software Version Other

Advantage 2.20U4 Rpt: / Contractor: Xtreme 24 / Xtreme Coil Drilling Corp

PATS 6.4.1.34 Job No: 5639377 / D & E District: / Unit: RMD

INTEQ does not guarantee the accuracy or correctness of interpretations provided in or from this log. Since all interpretations are opinions based on measurements, INTEQ shall under no circumstances be responsible for consequential damages or any other loss, costs, damages or expenses incurred or sustained in connection with the use of any such interpretations. INTEQ disclaims all expressed and implied warranties related to this service. INTEQ's liabilities and obligations shall be governed by INTEQ's Standard Terms and Conditions.

Log Run Summary

LWD Run No.	BHA Run No.	Bit Run No.	Bit Size (in.)	Bit Type	Bit Gauge Length (in.)	Assembly Type	Logged Interval		Bit Depth Interval		Date / Time		Circ. Time (hrs.)		
							Top	Bottom	From	To	Start			End	
							(ft.)	(ft.)	(ft.)	(ft.)					
1	1	1	8.750	PDC	2.000	Steerable	7230	8220	7250	8275	18/Jul/2013 19:09	19/Jul/2013 17:35	48.4		

Crew

Name	Arrive	Depart	Name	Arrive	Depart	Name	Arrive	Depart
	Wellsite	Wellsite		Wellsite	Wellsite		Wellsite	Wellsite
Austin Small	15/Jul/2013	20/Jul/2013	Osagie Otoikhine	15/Jul/2013	20/Jul/2013			

Mud Properties Record

Date / Time	LWD Run No.	Measured Depth (ft.)	Mud Type	Density (ppg)	Viscosity (cp)	pH	Fluid Loss (cc)	Oil / Water	Source	Total Chlorides (ppm)	K+
01/Jul/2013 18:00	1	3215	Drill Water	8.4	2	8.1	N/A	0.0/99.3	Active	600	N/A
16/Aug/2013 18:00	2	8275	LSND	9.5	11	8.7	N/A	1.0/92.5	Active	1400	N/A

Mnemonics

Curve	Description	Units
ROPA	Rate of Penetration, 3.0 ft. Avg.	ft/hr
GRAX	Gamma Ray Apparent, 0.5 ft. Avg.	API
TCDX	Downhole Temperature	degF
WOBA	Weight On Bit, 1.0 ft. Avg.	kLbs

Equipment and Service Data


LWD Run No.	Tool	Serial Number	Measurement	Bit Offset (ft.)	Max O.D. (in.)	Min I.D. (in.)
1	DIR	12456788	Directional	57.29	6.750	3.250
1	SRIG	12554657	Gamma	54.55	6.750	3.250

Comments

(1) Baker Hughes INTEQ run 1 utilized 6 3/4 inch NaviGamma (Gamma Ray and Directional) behind a 8 3/4 inch bit and steerable assembly from 7250 feet to 8275 feet MD (7125 feet to 7761 feet TVD).
--

Remarks

Number	Measured Depth (ft.)	Hole Section (in.)	LWD Run No.	Remark
1	7200	8.750	1	The Interval from surface to 7230 feet MD (7105 feet TVD) was not logged since logging services began at the kick off point.

		Company : Anadarko Well : Underhill State 26C-17HZ Interval : 7065.00 - 7780.00 feet Created : 20/Aug/2013 1:58:20 PM	
Gamma Ray Apparent 0.5 ft Avg GRAX 0 150 API	TVD feet 1:240	Rate of Penetration 3.0 ft Avg ROP_AVG 500 0 ft/hr	Surface Weight On Bit 1.0 ft Avg WOB_AVG 0 150 klbf Downhole Temperature TCDX 100 350 degF
GRAX			

See Remark 1

7100

> Run 1

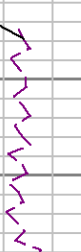
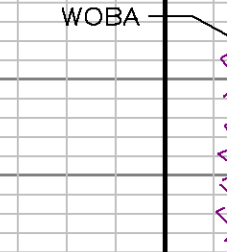
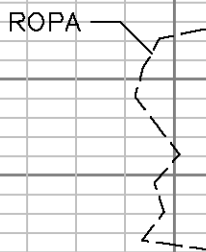
7200

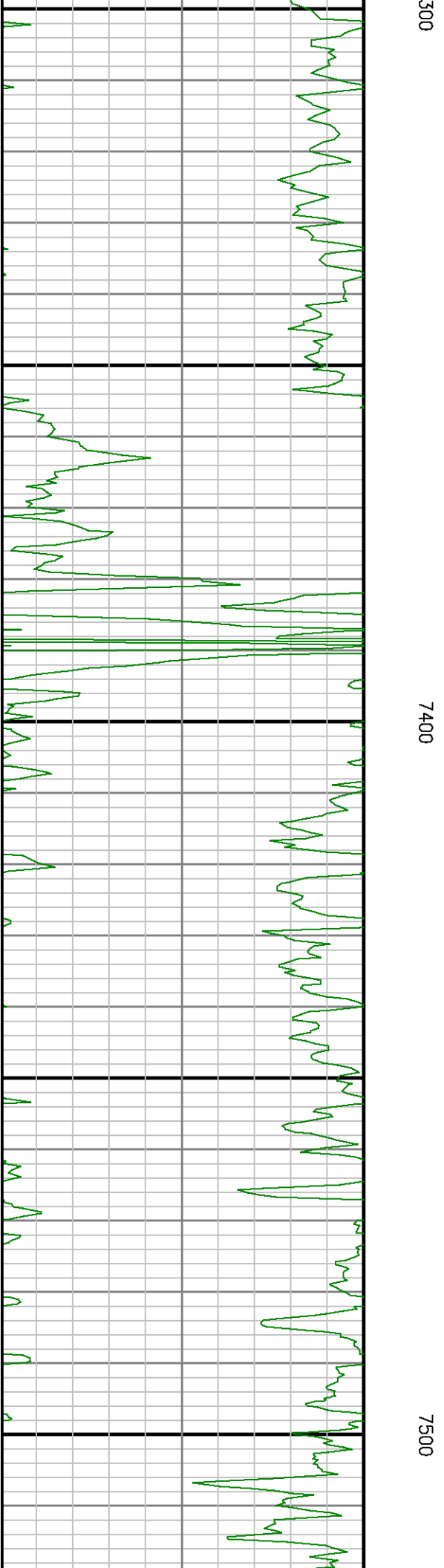
7

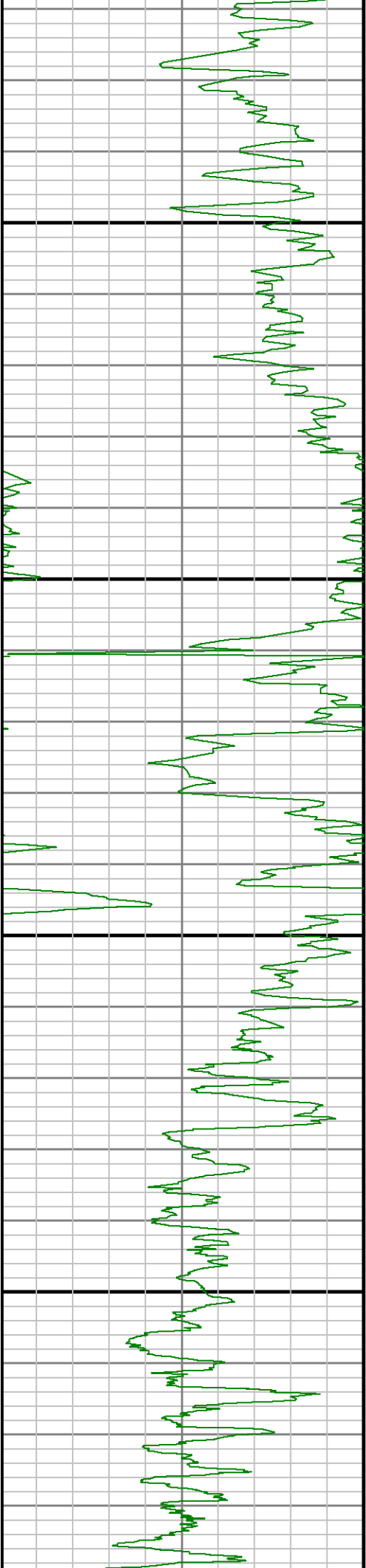
ROPA

WOBA

TCDX

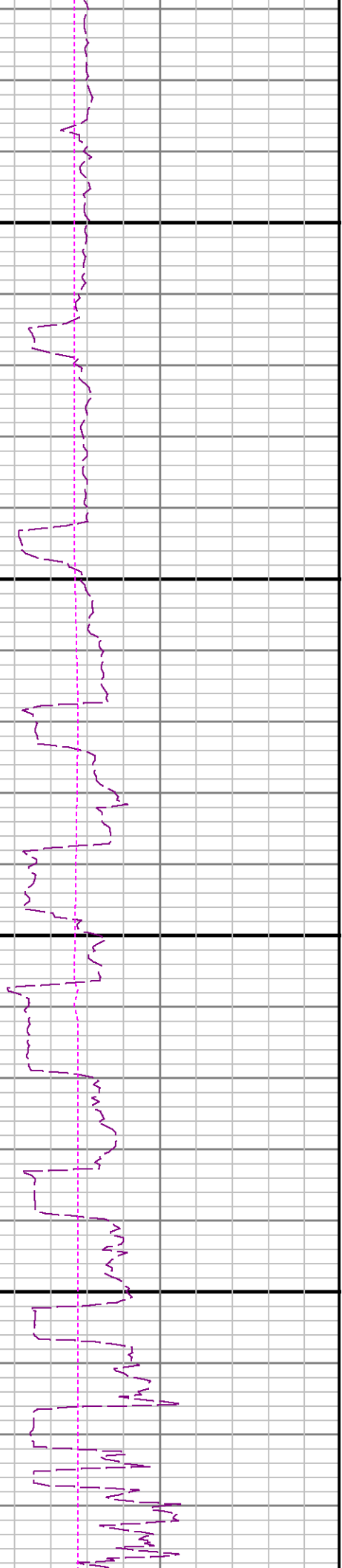
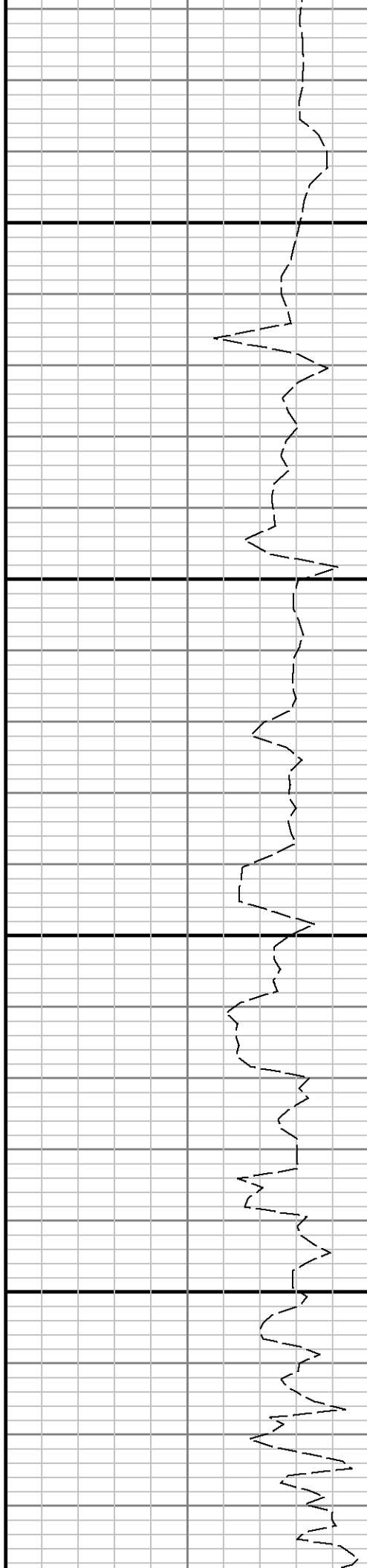


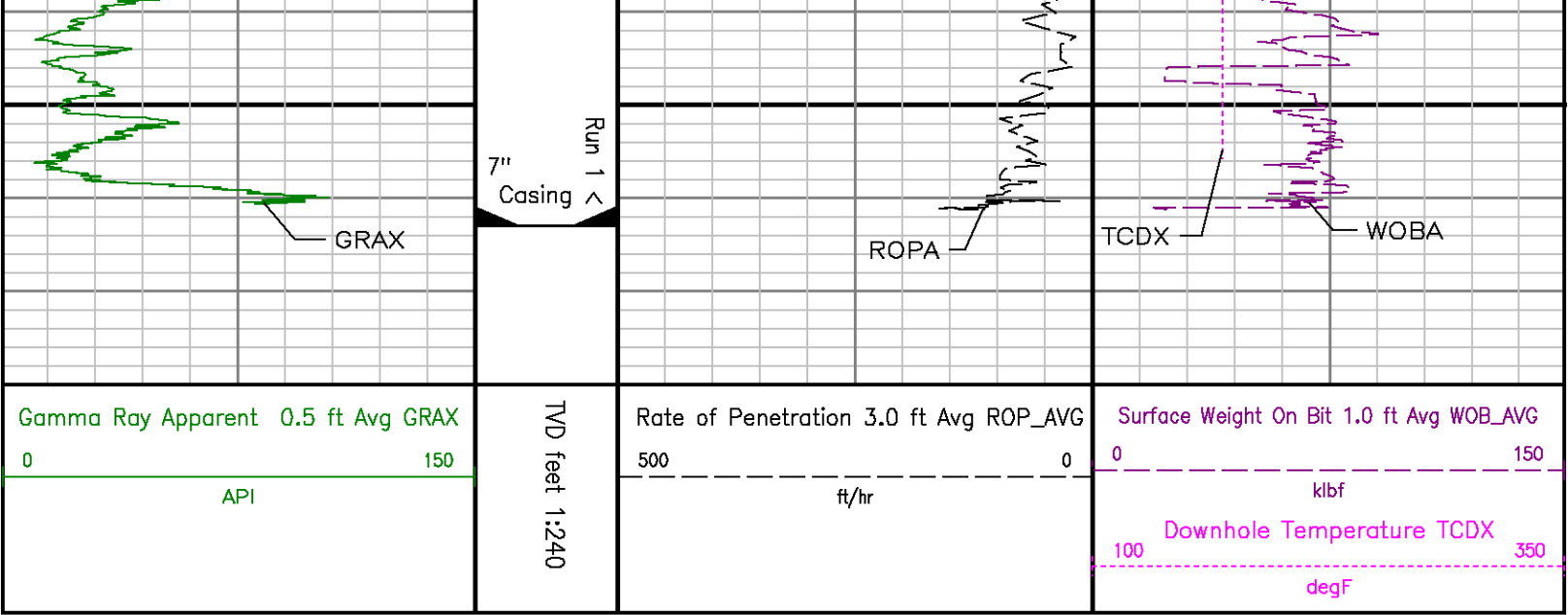




7600

7700





ADVANTAGE Final Survey Listing												
Operator :Anadarko			Field : Weld County (Kerr McGee)			API No : 051233690500						
Well :Underhill State 26C-17HZ			Rig : Xtreme 24			Job :5639377						
Wellbore : Underhill State 26C-17HZ Orig Hole												
Well Origin												
Latitude		40.0464 deg				Longitude		-104.9086 deg				
North Reference		True				Drill Depth Zero		NULL				
Vertical Datum is		Ground Level				Vertical Datum to DDZ		16.00 ft				
Vertical Section North		0.00 ft				Vertical Section East		0.00 ft				
Vertical Section Azimuth		359.8600 deg				Vertical Section Depth		0.00ft				
Grid Convergence		0.0000 deg				Magnetic Declination		8.5100 deg				
Total Correction		8.5100 deg				TVD Calculation Method		Minimal Curvature				
D-Raw Calculation		Magcorr1				Local Magnetic Field		52926 nT				
Local Magnetic Dip Angle		66.6000 deg				Local Gravity Field		9.802 m/s^2				
Tie	MD ft	Incl deg	Azim deg	North ft	East ft	TVD ft	VS ft	Incr VS ft	Crs Len ft	DLS deg/100ft	Build deg/100ft	Turn deg/100ft

U	0.00	0.0000	0.0000	0.00	0.00	0.00	0.00	0.00				
	851.00	0.5900	80.6200	5.64	3.07	850.96	5.63	0.70	851.00	0.07	0.07	9.47
	994.00	0.3100	32.9000	6.08	4.01	993.96	6.07	1.74	143.00	0.31	-0.20	-33.37
	1088.00	2.3000	124.5700	5.23	5.70	1087.93	5.21	3.64	94.00	2.48	2.12	97.52
	1182.00	4.1700	129.7800	1.97	9.88	1181.78	1.95	8.94	94.00	2.01	1.99	5.54
	1276.00	3.4600	160.3700	-2.89	13.46	1275.58	-2.92	14.97	94.00	2.26	-0.76	32.54
	1370.00	5.5000	152.5900	-9.56	16.48	1369.29	-9.60	22.30	94.00	2.26	2.17	-8.28
	1464.00	7.8600	152.8600	-19.14	21.42	1462.66	-19.19	33.07	94.00	2.30	2.30	0.29
	1558.00	10.2400	144.1200	-31.48	29.17	1555.51	-31.55	47.65	94.00	3.09	2.74	-9.30
	1652.00	12.6300	134.0700	-45.40	41.46	1647.65	-45.50	66.22	94.00	3.30	2.54	-10.69
	1747.00	13.2000	130.7300	-59.71	57.14	1740.25	-59.84	87.44	95.00	0.99	0.60	-3.52
	1841.00	12.7500	124.9100	-72.64	73.78	1831.85	-72.83	108.52	94.00	1.47	-0.48	-6.19
	1935.00	12.3200	120.4100	-83.66	90.93	1923.61	-83.88	128.90	94.00	1.13	-0.46	-4.79
	2030.00	11.2700	117.0000	-93.00	107.95	2016.61	-93.27	148.32	95.00	1.33	-1.11	-3.59
	2121.00	12.2900	119.1900	-101.76	124.33	2105.69	-102.07	166.89	91.00	1.22	1.12	2.41
	2212.00	11.7300	118.3800	-110.88	140.92	2194.70	-111.23	185.82	91.00	0.64	-0.62	-0.89
	2303.00	11.1400	115.3700	-119.05	157.00	2283.89	-119.43	203.86	91.00	0.92	-0.65	-3.31
	2395.00	10.3000	115.9600	-126.46	172.43	2374.28	-126.88	220.97	92.00	0.92	-0.91	0.64
	2486.00	11.3700	114.2200	-133.70	187.92	2463.66	-134.16	238.08	91.00	1.23	1.18	-1.91
	2576.00	12.9000	119.1200	-142.23	204.79	2551.65	-142.73	256.98	90.00	2.05	1.70	5.44
	2667.00	12.4100	117.2200	-152.11	222.22	2642.25	-152.22	275.22	91.22	2.22	2.22	1.22
	2758.00	12.9200	119.1200	-142.23	204.79	2551.65	-142.73	256.98	90.00	2.05	1.70	5.44
	2849.00	12.4300	117.3300	-152.11	222.22	2642.25	-152.22	275.22	91.22	2.22	2.22	1.22
	2940.00	12.9400	119.1200	-142.23	204.79	2551.65	-142.73	256.98	90.00	2.05	1.70	5.44
	3031.00	12.4500	117.3300	-152.11	222.22	2642.25	-152.22	275.22	91.22	2.22	2.22	1.22

	2887.00	13.4100	117.9300	-152.11	222.99	2640.26	-152.66	277.69	91.00	0.63	0.56	-1.31
	2759.00	13.7400	119.4800	-162.49	241.93	2729.69	-163.08	299.28	92.00	0.53	0.36	1.68
	2850.00	13.4500	124.3100	-173.77	260.08	2818.14	-174.41	320.65	91.00	1.29	-0.32	5.31
	2941.00	11.8800	122.9100	-184.83	276.68	2906.93	-185.50	340.60	91.00	1.76	-1.73	-1.54
	3032.00	12.0700	124.8000	-195.34	292.36	2995.95	-196.06	359.48	91.00	0.48	0.21	2.08
	3124.00	13.1000	132.8800	-207.93	307.90	3085.74	-208.68	379.48	92.00	2.21	1.12	8.78
	3215.00	14.2300	136.2300	-223.02	323.19	3174.17	-223.81	400.97	91.00	1.52	1.24	3.68
	3307.00	14.3200	138.4600	-239.71	338.56	3263.33	-240.53	423.65	92.00	0.61	0.10	2.42
	3399.00	13.8600	137.2800	-256.32	353.58	3352.56	-257.18	446.04	92.00	0.59	-0.50	-1.28
	3490.00	14.1400	133.0300	-271.91	369.10	3440.86	-272.81	468.04	91.00	1.17	0.31	-4.67
	3581.00	14.9200	132.0500	-287.34	385.93	3528.95	-288.28	490.87	91.00	0.90	0.86	-1.08
	3674.00	14.7700	127.5200	-302.58	404.22	3618.85	-303.57	514.68	93.00	1.26	-0.16	-4.87
	3767.00	14.4800	123.0700	-316.15	423.37	3708.84	-317.18	538.15	93.00	1.25	-0.31	-4.78
	3860.00	13.4400	120.1600	-327.92	442.45	3799.09	-329.00	560.58	93.00	1.35	-1.12	-3.13
	3954.00	13.7700	120.9600	-339.17	461.49	3890.45	-340.29	582.69	94.00	0.40	0.35	0.85
	4047.00	13.8500	125.5200	-351.33	480.05	3980.77	-352.50	604.87	93.00	1.17	0.09	4.90
	4141.00	13.8600	128.5500	-364.88	498.01	4072.03	-366.10	627.37	94.00	0.77	0.01	3.22
	4234.00	14.7200	126.1400	-378.79	516.26	4162.15	-380.05	650.32	93.00	1.12	0.92	-2.59
	4327.00	13.0400	127.5100	-392.15	534.13	4252.44	-393.45	672.63	93.00	1.84	-1.81	1.47
	4421.00	13.6400	124.2000	-404.84	551.71	4343.90	-406.18	694.31	94.00	1.03	0.64	-3.52
	4514.00	15.1000	123.0500	-417.61	570.93	4433.99	-419.00	717.39	93.00	1.60	1.57	-1.24
	4607.00	13.8600	125.2200	-430.64	590.19	4524.03	-432.08	740.64	93.00	1.46	-1.33	2.33
	4701.00	13.6700	122.8600	-443.16	608.71	4615.33	-444.64	763.00	94.00	0.63	-0.20	-2.51
	4786.00	13.8900	124.1600	-454.34	625.59	4697.89	-455.86	783.24	85.00	0.45	0.26	1.53
	4871.00	14.9600	124.2400	-466.24	643.11	4780.21	-467.81	804.42	85.00	1.26	1.26	0.09
	4957.00	14.7000	126.3500	-478.95	661.07	4863.34	-480.57	826.43	86.00	0.70	-0.30	2.45
	5042.00	14.6900	127.7300	-491.94	678.28	4945.56	-493.59	847.99	85.00	0.41	-0.01	1.62
	5127.00	13.6800	129.2800	-504.90	694.59	5027.97	-506.59	868.81	85.00	1.27	-1.19	1.82
	5212.00	11.6900	129.9100	-516.79	708.97	5110.89	-518.52	887.48	85.00	2.35	-2.34	0.74
	5297.00	11.6200	125.8900	-527.33	722.51	5194.14	-529.09	904.64	85.00	0.96	-0.08	-4.73
Tie	MD ft	Incl deg	Azim deg	North ft	East ft	TVD ft	VS ft	Incr VS ft	Crs Len ft	DLS deg/100ft	Build deg/100ft	Turn deg/100ft
	5383.00	13.0500	130.5500	-538.72	736.91	5278.16	-540.52	923.00	86.00	2.02	1.66	5.42
	5468.00	15.2300	131.7300	-552.39	752.53	5360.58	-554.23	943.76	85.00	2.59	2.56	1.39
	5553.00	14.2700	131.3500	-566.75	768.73	5442.77	-568.62	965.40	85.00	1.14	-1.13	-0.45
	5638.00	12.8200	130.6300	-579.81	783.75	5525.41	-581.72	985.31	85.00	1.72	-1.71	-0.85
	5723.00	13.0100	127.0300	-591.71	798.55	5608.26	-593.66	1004.30	85.00	0.97	0.22	-4.24
	5808.00	12.1200	123.0800	-602.34	813.66	5691.22	-604.33	1022.78	85.00	1.45	-1.05	-4.65
	5893.00	11.2000	121.6400	-611.54	828.17	5774.47	-613.57	1039.95	85.00	1.14	-1.08	-1.69
	5978.00	9.8900	121.0000	-619.64	841.45	5858.03	-621.69	1055.51	85.00	1.55	-1.54	-0.75
	6064.00	8.5000	118.7300	-626.49	853.36	5942.92	-628.58	1069.25	86.00	1.67	-1.62	-2.64
	6149.00	7.4500	115.6200	-631.90	863.84	6027.10	-634.01	1081.04	85.00	1.34	-1.24	-3.66
	6234.00	6.7200	114.5700	-636.35	873.33	6111.45	-638.48	1091.52	85.00	0.87	-0.86	-1.24
	6319.00	5.0600	110.8900	-639.75	881.35	6196.00	-641.90	1100.24	85.00	2.00	-1.95	-4.33
	6405.00	3.4700	104.3300	-641.75	887.42	6281.76	-643.92	1106.62	86.00	1.93	-1.85	-7.63
	6490.00	3.6300	117.7300	-643.64	892.29	6366.80	-645.82	1111.85	85.00	0.99	0.19	15.76
	6575.00	4.8800	130.0700	-647.22	897.44	6451.36	-649.41	1118.12	85.00	1.81	1.47	14.52
	6660.00	5.5500	138.8100	-652.64	902.92	6536.01	-654.84	1125.83	85.00	1.22	0.79	10.28
	6746.00	4.1600	138.7700	-658.11	907.71	6621.70	-660.33	1133.10	86.00	1.62	-1.62	-0.05
	6831.00	3.8300	127.1300	-662.15	912.01	6706.50	-664.37	1139.00	85.00	1.03	-0.39	-13.69
	6916.00	4.0700	128.2000	-665.73	916.64	6791.30	-667.96	1144.85	85.00	0.30	0.28	1.26
	7001.00	3.8500	123.5900	-669.17	921.39	6876.09	-671.42	1150.72	85.00	0.46	-0.26	-5.42
	7087.00	3.2300	126.3900	-672.20	925.74	6961.93	-674.46	1156.02	86.00	0.75	-0.72	3.26
	7172.00	2.4000	123.7100	-674.61	929.15	7046.82	-676.88	1160.20	85.00	0.99	-0.96	-3.15
	7214.00	2.4200	119.1700	-675.53	930.66	7088.79	-677.80	1161.96	42.00	0.46	0.05	-10.81
	7257.00	2.2300	112.5400	-676.30	932.22	7131.75	-678.57	1163.70	43.00	0.77	-0.44	-15.42
	7300.00	2.2200	43.5300	-676.01	933.57	7174.73	-678.29	1165.08	43.00	5.86	-0.02	-160.49
	7342.00	6.4800	7.1200	-673.07	934.42	7216.80	-675.35	1168.14	42.00	11.60	10.14	-66.69
	7385.00	11.3400	2.2300	-666.43	934.89	7259.07	-668.72	1174.80	43.00	11.43	11.30	-11.37
	7427.00	15.9600	2.3200	-656.53	935.28	7299.87	-658.82	1184.71	42.00	11.00	11.00	0.21
	7470.00	19.9300	4.3500	-643.31	936.08	7340.77	-645.60	1197.95	43.00	9.35	9.23	4.72
	7512.00	23.5400	4.0700	-627.80	937.22	7379.78	-630.09	1213.50	42.00	8.60	8.60	-0.67
	7555.00	26.5100	1.3500	-609.64	938.05	7418.74	-611.93	1231.68	43.00	7.41	6.91	-6.33
	7597.00	30.2800	0.9400	-589.64	938.45	7455.66	-591.93	1251.69	42.00	9.23	9.21	-0.98

	7597.00	30.3000	0.9400	-309.04	930.40	7430.00	-391.90	1231.09	42.00	9.20	9.21	-0.90
	7639.00	34.4800	359.4000	-587.13	938.50	7491.11	-589.42	1274.20	42.00	9.98	9.76	-3.87
	7682.00	39.3100	358.5800	-541.32	938.03	7525.49	-543.81	1300.01	43.00	11.29	11.23	-1.91
	7725.00	44.0300	359.1900	-512.75	937.48	7557.80	-515.04	1328.59	43.00	11.02	10.98	1.42
	7787.00	48.5500	0.1100	-482.40	937.31	7588.81	-484.89	1358.94	42.00	10.88	10.76	2.19
	7809.00	53.3800	0.0900	-449.78	937.36	7613.06	-452.07	1391.55	42.00	11.50	11.50	-0.05
	7852.00	56.8900	1.2000	-414.51	937.77	7637.83	-416.80	1426.83	43.00	8.43	8.16	2.58
	7894.00	59.2300	1.8400	-378.88	938.65	7659.85	-381.18	1462.47	42.00	5.64	5.57	1.05
	7937.00	62.4100	1.6200	-341.36	939.72	7680.81	-343.66	1500.01	43.00	7.40	7.40	-0.05
	7979.00	66.1400	359.8800	-303.53	940.21	7699.04	-305.83	1537.83	42.00	9.83	8.88	-4.14
	8022.00	69.1500	359.5500	-263.77	940.01	7715.39	-266.07	1577.60	43.00	7.04	7.00	-0.77
	8064.00	70.7300	359.2600	-224.32	939.60	7729.80	-226.62	1617.05	42.00	3.82	3.76	-0.69
	8107.00	73.7500	357.5800	-183.39	938.48	7742.92	-185.89	1657.99	43.00	7.95	7.02	-3.91
	8150.00	78.7300	356.9500	-141.69	936.47	7753.14	-143.98	1699.75	43.00	11.87	11.58	-1.47
	8192.00	85.0700	357.1800	-100.18	934.34	7759.06	-102.47	1741.31	42.00	15.10	15.10	0.50
	8216.00	88.3300	356.1500	-76.27	932.94	7760.44	-78.55	1765.26	24.00	14.22	13.58	-4.21
	8304.00	91.3100	357.6100	11.59	928.15	7760.71	9.32	1853.25	88.00	3.77	3.39	1.66
	8389.00	91.7200	355.9000	98.42	923.34	7758.47	94.16	1938.22	85.00	2.07	0.48	-2.01
	8475.00	92.1300	355.8700	182.15	917.17	7755.58	179.91	2024.17	86.00	0.48	0.48	-0.03
Tie	MD ft	Incl deg	Azim deg	North ft	East ft	TVD ft	VS ft	Incr VS ft	Crs Len ft	DLS deg/100ft	Build deg/100ft	Turn deg/100ft
	8580.00	91.2900	356.6800	266.93	911.65	7753.04	264.70	2109.13	85.00	1.37	-0.99	0.95
	8645.00	89.8700	357.8100	351.82	907.57	7752.18	349.80	2194.12	85.00	2.13	-1.67	1.33
	8730.00	89.9000	359.6700	436.80	905.70	7752.35	434.58	2279.12	85.00	2.19	0.04	2.19
	8818.00	89.2300	0.8900	522.79	906.12	7753.00	520.58	2365.11	86.00	1.62	-0.78	1.42
	8901.00	89.8100	0.8400	607.78	907.40	7753.72	605.58	2450.11	85.00	0.88	0.88	-0.08
	8986.00	88.6700	1.7200	692.75	909.30	7754.84	690.53	2535.10	85.00	1.69	-1.34	1.04
	9071.00	89.2900	1.5300	777.70	911.71	7756.36	775.47	2620.08	85.00	0.76	0.73	-0.22
	9156.00	89.7800	1.3400	862.87	913.84	7757.05	860.44	2705.08	85.00	0.62	0.58	-0.22
	9241.00	89.3500	0.8900	947.65	915.49	7757.89	945.41	2790.08	85.00	0.73	-0.51	-0.53
	9326.00	89.5900	1.1400	1032.64	917.00	7758.48	1030.39	2875.08	85.00	0.41	0.28	0.29
	9412.00	90.2700	1.6400	1118.61	919.08	7758.58	1116.36	2961.07	86.00	0.98	0.79	0.58
	9496.00	89.9000	2.1200	1202.58	921.84	7758.46	1200.31	3045.07	84.00	0.72	-0.44	0.57
	9582.00	88.3000	4.0000	1288.42	926.43	7759.81	1286.16	3131.06	86.00	2.87	-1.86	2.19
	9667.00	88.0500	1.9400	1373.26	930.83	7762.52	1370.98	3216.01	85.00	2.44	-0.29	-2.42
	9752.00	90.3300	2.3200	1458.19	933.99	7763.72	1455.90	3300.99	85.00	2.72	2.68	0.45
	9841.00	90.6700	3.3700	1547.07	938.41	7762.94	1544.78	3389.99	89.00	1.24	0.38	1.18
	9926.00	89.1600	3.2700	1631.93	943.33	7763.07	1629.62	3474.99	85.00	1.78	-1.78	-0.12
	9989.00	88.9400	2.5200	1694.84	946.51	7764.11	1692.52	3537.98	83.00	1.24	-0.35	-1.19
	10074.00	90.2700	4.3100	1779.68	951.57	7764.70	1777.35	3622.97	85.00	2.62	1.56	2.11
	10160.00	89.9600	3.1300	1865.50	957.15	7764.53	1863.15	3708.97	86.00	1.42	-0.36	-1.37
	10245.00	89.9600	3.5900	1950.35	962.13	7764.58	1948.00	3793.97	85.00	0.54	0.00	0.54
	10330.00	90.1200	3.6700	2035.18	967.52	7764.53	2032.81	3878.97	85.00	0.21	0.19	0.09
	10415.00	88.2900	2.3200	2120.05	971.96	7765.70	2117.67	3963.95	85.00	2.68	-2.15	-1.59
	10501.00	88.9800	1.8800	2205.97	975.11	7767.75	2203.58	4049.93	86.00	0.95	0.80	-0.51
	10586.00	88.0300	0.1300	2290.92	978.60	7769.97	2288.53	4134.90	85.00	2.34	-1.12	-2.06
	10671.00	87.4600	358.3400	2375.85	975.46	7773.32	2373.45	4219.83	85.00	2.21	-0.67	-2.11
	10756.00	87.8500	358.0900	2460.73	972.82	7776.94	2458.34	4304.75	85.00	0.37	0.22	-0.29
	10842.00	88.9200	358.4300	2546.65	970.21	7779.52	2544.27	4390.71	86.00	1.53	1.48	0.40
	10927.00	88.4500	358.6000	2631.60	968.01	7781.47	2629.22	4475.69	85.00	0.59	-0.55	0.20
	11012.00	89.7800	358.2400	2716.55	965.66	7782.78	2714.18	4560.67	85.00	1.62	1.56	-0.42
	11097.00	90.3000	357.7700	2801.50	962.70	7782.72	2799.14	4645.67	85.00	0.82	0.81	-0.55
	11182.00	90.1500	358.7100	2886.48	960.09	7782.39	2884.10	4730.67	85.00	1.12	-0.18	1.11
	11267.00	89.8700	358.5100	2971.43	958.03	7782.37	2969.08	4815.67	85.00	0.40	-0.33	-0.24
	11352.00	89.8400	357.1700	3056.37	954.83	7782.59	3054.03	4900.67	85.00	1.58	-0.04	-1.58
	11437.00	89.5900	357.4900	3141.28	950.87	7783.01	3138.94	4985.67	85.00	0.48	-0.29	0.38
	11522.00	89.5900	356.8700	3226.17	946.69	7783.62	3223.85	5070.67	85.00	0.73	0.00	-0.73
	11607.00	89.5000	356.3000	3311.02	941.62	7784.29	3308.71	5155.66	85.00	0.68	-0.11	-0.87
	11692.00	89.7200	356.7600	3395.86	938.48	7784.87	3393.56	5240.66	85.00	0.60	0.26	0.54
	11777.00	89.8600	356.8500	3480.72	931.74	7785.33	3478.44	5325.66	85.00	0.13	-0.07	0.11
	11862.00	90.2100	357.1400	3565.61	927.29	7785.43	3563.33	5410.66	85.00	0.73	0.65	0.34
	11947.00	90.3000	357.9200	3650.53	923.62	7785.05	3648.26	5495.66	85.00	0.92	0.11	0.92
	12032.00	90.2700	357.3600	3735.45	920.12	7784.83	3733.19	5580.66	85.00	0.66	-0.04	-0.66
	12097.00	90.3700	357.5400	3800.39	917.23	7784.26	3798.14	5645.65	85.00	0.32	0.15	0.28

12051100	9033100	33713100	33300100	917100	7751100	3700111	3310100	33100	3300	3310	3300
Projection to TD:											
12149.00	90.3700	357.5400	3852.34	915.00	7783.93	3850.09	5697.65	52.00	0.00	0.00	0.00