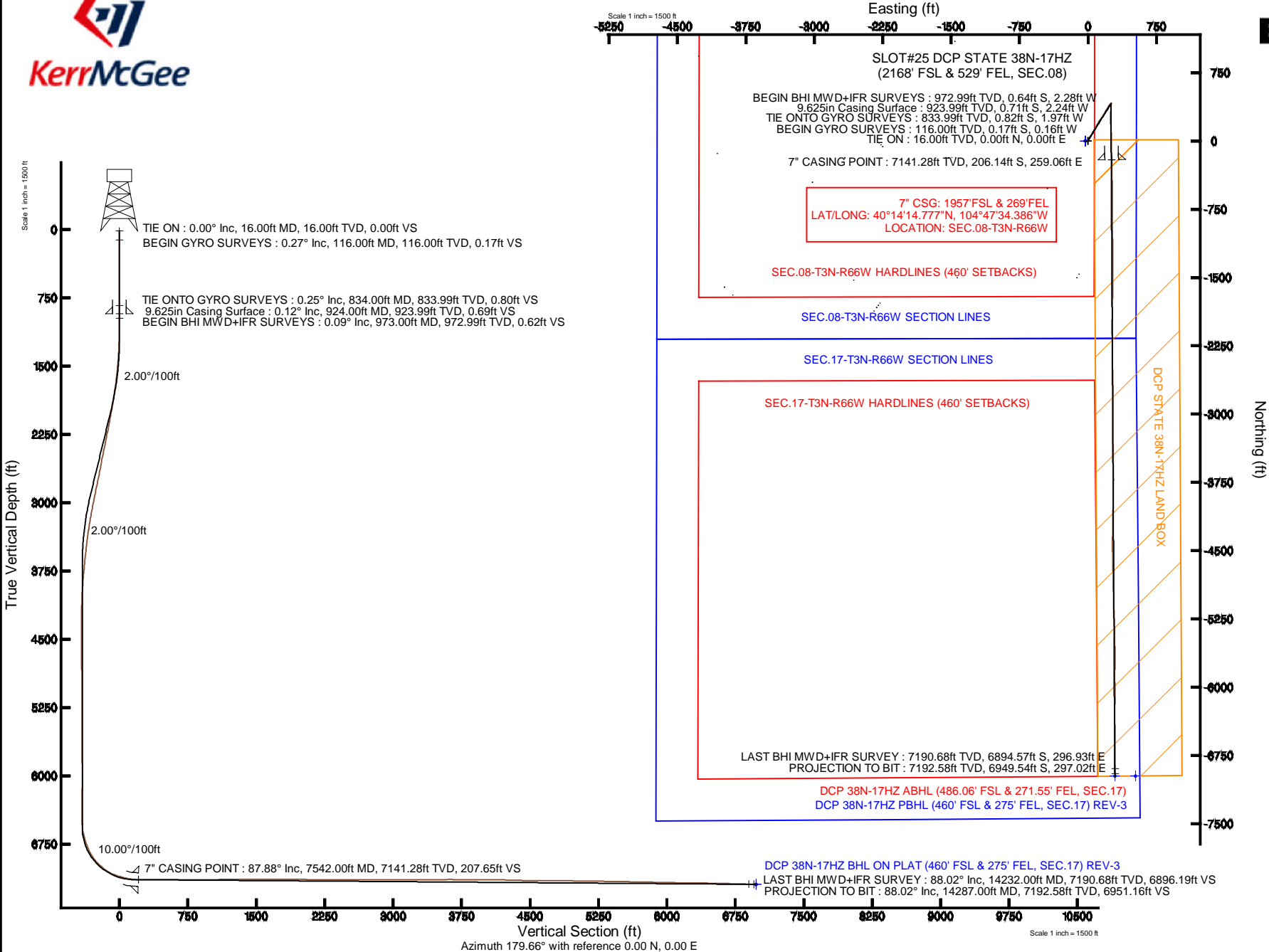


KERR-MCGEE OIL & GAS ONSHORE LP

Location: COLORADO Slot: SLOT#25 DCP STATE 38N-17HZ (2168' FSL & 529' FEL, SEC.08)
 Field: WELD COUNTY (KERR MCGEE) Well: DCP STATE 38N-17HZ
 Facility: SEC.08-T3N-R66W Wellbore: DCP STATE 38N-17HZ PWB

Plot reference wellpath is DCP STATE 38N-17HZ (REV-B.0) PWP

True vertical depths are referenced to XTREME 20 (16' KB) (RKB)	Grid System: NAD83 / Lambert Colorado SP, Northern Zone (501), US feet
Measured depths are referenced to XTREME 20 (16' KB) (RKB)	North Reference: True north
XTREME 20 (16' KB) (RKB) to Mean Sea Level: 4871 feet	Scale: True distance
Mean Sea Level to Mud line (At Slot: SLOT#25 DCP STATE 38N-17HZ (2168' FSL & 529' FEL, SEC.08)): 0 feet	Depths are in feet
Coordinates are in feet referenced to Slot	Created by: robale01 on 10/Oct/2013





Actual Wellpath Report

DCP STATE 38N-17HZ AWP

Page 1 of 8



REFERENCE WELLPATH IDENTIFICATION

Operator	KERR-MCGEE OIL & GAS ONSHORE LP	Slot	SLOT#25 DCP STATE 38N-17HZ (2168' FSL & 529' FEL, SEC.0
Area	COLORADO	Well	DCP STATE 38N-17HZ
Field	WELD COUNTY (KERR MCGEE)	Wellbore	DCP STATE 38N-17HZ AWP
Facility	SEC.08-T3N-R66W		

REPORT SETUP INFORMATION

Projection System	NAD83 / Lambert Colorado SP, Northern Zone (501), US feet	Software System	WellArchitect® 4.0.0
North Reference	True	User	Robiale01
Scale	0.999957	Report Generated	10/Oct/2013 at 14:10
Convergence at slot	n/a	Database/Source file	WA_ANADARKO/DCP_STATE_38N-17HZ_AWP.xml

WELLPATH LOCATION

	Local coordinates		Grid coordinates		Geographic coordinates	
	North[ft]	East[ft]	Easting[US ft]	Northing[US ft]	Latitude	Longitude
Slot Location	194.58	1501.20	3197148.28	1330331.75	40°14'16.814"N	104°47'37.727"W
Facility Reference Pt			3195648.74	1330125.32	40°14'14.892"N	104°47'57.084"W
Field Reference Pt			3197771.84	1268891.29	40°04'09.600"N	104°47'36.000"W

WELLPATH DATUM

Calculation method	Minimum curvature	XTREME 20 (16' KB) (RKB) to Facility Vertical Datum	4871.00ft
Horizontal Reference Pt	Slot	XTREME 20 (16' KB) (RKB) to Mean Sea Level	4871.00ft
Vertical Reference Pt	XTREME 20 (16' KB) (RKB)	XTREME 20 (16' KB) (RKB) to Mud Line at Slot (SLOT#25 DCP STATE 38N-17HZ (2168' FSL & 529' FEL, SEC.08))	4871.00ft
MD Reference Pt	XTREME 20 (16' KB) (RKB)	Section Origin	N 0.00, E 0.00 ft
Field Vertical Reference	Mean Sea Level	Section Azimuth	177.55°

REFERENCE WELLPATH IDENTIFICATION			
Operator	KERR-MCGEE OIL & GAS ONSHORE LP	Slot	SLOT#25 DCP STATE 38N-17HZ (2168' FSL & 529' FEL, SEC.0
Area	COLORADO	Well	DCP STATE 38N-17HZ
Field	WELD COUNTY (KERR MCGEE)	Wellbore	DCP STATE 38N-17HZ AWP
Facility	SEC.08-T3N-R66W		

WELLPATH DATA (177 stations) † = interpolated/extrapolated station										
MD [ft]	Inclination [°]	Azimuth [°]	TVD [ft]	Vert Sect [ft]	North [ft]	East [ft]	Latitude	Longitude	DLS [°/100ft]	Comments
0.00†	0.000	222.440	0.00	0.00	0.00	0.00	40°14'16.814"N	104°47'37.727"W	0.00	
16.00	0.000	222.440	16.00	0.00	0.00	0.00	40°14'16.814"N	104°47'37.727"W	0.00	TIE ON
116.00	0.270	222.440	116.00	0.17	-0.17	-0.16	40°14'16.813"N	104°47'37.729"W	0.27	BEGIN GYRO SURVEYS
216.00	0.300	261.290	216.00	0.36	-0.39	-0.58	40°14'16.811"N	104°47'37.734"W	0.19	
316.00	0.050	80.170	316.00	0.39	-0.42	-0.79	40°14'16.810"N	104°47'37.737"W	0.35	
416.00	0.070	296.460	416.00	0.35	-0.38	-0.80	40°14'16.811"N	104°47'37.737"W	0.11	
516.00	0.230	285.960	516.00	0.26	-0.30	-1.05	40°14'16.811"N	104°47'37.740"W	0.16	
616.00	0.190	182.670	616.00	0.36	-0.41	-1.25	40°14'16.810"N	104°47'37.743"W	0.33	
716.00	0.230	220.060	716.00	0.67	-0.73	-1.39	40°14'16.807"N	104°47'37.745"W	0.14	
816.00	0.410	278.220	816.00	0.75	-0.83	-1.87	40°14'16.806"N	104°47'37.751"W	0.35	
834.00	0.250	283.650	833.99	0.73	-0.82	-1.97	40°14'16.806"N	104°47'37.752"W	0.90	TIE ONTO GYRO SURVEYS
973.00	0.090	356.230	972.99	0.54	-0.64	-2.28	40°14'16.808"N	104°47'37.756"W	0.17	BEGIN BHI MWD+IFR SURVEYS
1064.00	0.250	327.340	1063.99	0.29	-0.40	-2.39	40°14'16.810"N	104°47'37.758"W	0.19	
1155.00	1.260	25.370	1154.99	-0.76	0.67	-2.07	40°14'16.821"N	104°47'37.753"W	1.26	
1247.00	3.010	35.180	1246.92	-3.57	3.56	-0.24	40°14'16.850"N	104°47'37.730"W	1.94	
1338.00	4.060	34.740	1337.74	-8.03	8.16	2.97	40°14'16.895"N	104°47'37.688"W	1.15	
1433.00	5.090	29.770	1432.44	-14.27	14.58	6.98	40°14'16.959"N	104°47'37.637"W	1.16	
1524.00	6.260	31.430	1522.99	-21.81	22.32	11.57	40°14'17.035"N	104°47'37.578"W	1.30	
1615.00	7.370	33.080	1613.35	-30.68	31.45	17.34	40°14'17.125"N	104°47'37.503"W	1.24	
1707.00	8.800	33.140	1704.43	-41.20	42.28	24.41	40°14'17.232"N	104°47'37.412"W	1.55	
1798.00	10.020	31.070	1794.21	-53.46	54.89	32.30	40°14'17.357"N	104°47'37.310"W	1.39	
1889.00	10.570	29.970	1883.74	-67.11	68.91	40.56	40°14'17.495"N	104°47'37.204"W	0.64	
1981.00	11.430	28.360	1974.05	-82.06	84.24	49.10	40°14'17.647"N	104°47'37.094"W	0.99	
2073.00	12.140	30.990	2064.11	-97.97	100.55	58.42	40°14'17.808"N	104°47'36.974"W	0.97	
2164.00	13.010	31.760	2152.93	-114.42	117.46	68.73	40°14'17.975"N	104°47'36.840"W	0.97	
2256.00	13.000	31.300	2242.57	-131.59	135.11	79.56	40°14'18.150"N	104°47'36.701"W	0.11	
2347.00	12.860	27.330	2331.26	-148.89	152.85	89.53	40°14'18.325"N	104°47'36.572"W	0.99	
2439.00	12.830	25.720	2420.96	-166.78	171.15	98.66	40°14'18.506"N	104°47'36.455"W	0.39	
2530.00	12.520	27.570	2509.74	-184.23	189.00	107.61	40°14'18.682"N	104°47'36.339"W	0.56	
2622.00	12.450	31.200	2599.57	-201.12	206.32	117.36	40°14'18.853"N	104°47'36.213"W	0.86	
2714.00	13.070	33.410	2689.30	-217.81	223.49	128.23	40°14'19.023"N	104°47'36.073"W	0.86	
2806.00	13.740	34.940	2778.79	-234.92	241.13	140.22	40°14'19.197"N	104°47'35.919"W	0.82	
2897.00	14.300	33.460	2867.08	-252.61	259.36	152.60	40°14'19.377"N	104°47'35.759"W	0.73	
2988.00	13.660	33.520	2955.38	-270.41	277.70	164.73	40°14'19.559"N	104°47'35.603"W	0.70	
3080.00	12.590	31.140	3044.98	-287.56	295.34	175.92	40°14'19.733"N	104°47'35.458"W	1.30	
3172.00	11.980	30.300	3134.87	-303.94	312.16	185.92	40°14'19.899"N	104°47'35.329"W	0.69	
3257.00	10.960	30.970	3218.17	-318.10	326.71	194.53	40°14'20.043"N	104°47'35.218"W	1.21	
3342.00	9.750	31.470	3301.79	-330.82	339.77	202.44	40°14'20.172"N	104°47'35.116"W	1.43	
3427.00	8.700	35.510	3385.69	-341.86	351.15	209.93	40°14'20.284"N	104°47'35.020"W	1.45	
3512.00	8.350	32.620	3469.75	-351.98	361.58	217.00	40°14'20.387"N	104°47'34.929"W	0.65	
3597.00	7.230	32.890	3553.96	-361.40	371.27	223.23	40°14'20.483"N	104°47'34.848"W	1.32	
3682.00	6.810	32.330	3638.33	-369.90	380.02	228.83	40°14'20.570"N	104°47'34.776"W	0.50	
3768.00	6.350	32.580	3723.76	-377.98	388.33	234.12	40°14'20.652"N	104°47'34.708"W	0.54	
3853.00	6.190	38.230	3808.25	-385.31	395.89	239.48	40°14'20.727"N	104°47'34.639"W	0.75	
3938.00	5.220	34.480	3892.83	-391.87	402.68	244.51	40°14'20.794"N	104°47'34.574"W	1.22	

REFERENCE WELLPATH IDENTIFICATION

Operator	KERR-MCGEE OIL & GAS ONSHORE LP	Slot	SLOT#25 DCP STATE 38N-17HZ (2168' FSL & 529' FEL, SEC.0
Area	COLORADO	Well	DCP STATE 38N-17HZ
Field	WELD COUNTY (KERR MCGEE)	Wellbore	DCP STATE 38N-17HZ AWP
Facility	SEC.08-T3N-R66W		

WELLPATH DATA (177 stations)

MD [ft]	Inclination [°]	Azimuth [°]	TVD [ft]	Vert Sect [ft]	North [ft]	East [ft]	Latitude	Longitude	DLS [°/100ft]	Comments
4023.00	4.200	27.330	3977.54	-397.67	408.64	248.13	40°14'20.852"N	104°47'34.527"W	1.38	
4108.00	2.500	31.460	4062.39	-401.91	412.98	250.52	40°14'20.895"N	104°47'34.496"W	2.02	
4193.00	0.830	90.880	4147.36	-403.41	414.55	252.11	40°14'20.911"N	104°47'34.476"W	2.58	
4279.00	1.220	91.560	4233.35	-403.31	414.52	253.64	40°14'20.911"N	104°47'34.456"W	0.45	
4364.00	0.220	294.980	4318.34	-403.32	414.56	254.40	40°14'20.911"N	104°47'34.446"W	1.68	
4449.00	0.370	247.070	4403.34	-403.30	414.53	254.00	40°14'20.911"N	104°47'34.452"W	0.32	
4534.00	0.280	275.110	4488.34	-403.23	414.44	253.54	40°14'20.910"N	104°47'34.457"W	0.21	
4620.00	0.470	290.620	4574.34	-403.40	414.58	253.00	40°14'20.911"N	104°47'34.464"W	0.25	
4705.00	0.290	302.800	4659.33	-403.66	414.82	252.49	40°14'20.914"N	104°47'34.471"W	0.23	
4790.00	0.350	238.160	4744.33	-403.66	414.80	252.09	40°14'20.913"N	104°47'34.476"W	0.41	
4875.00	0.360	200.490	4829.33	-403.28	414.41	251.78	40°14'20.910"N	104°47'34.480"W	0.27	
4960.00	0.190	187.280	4914.33	-402.90	414.02	251.67	40°14'20.906"N	104°47'34.482"W	0.21	
5046.00	0.220	138.800	5000.33	-402.63	413.76	251.76	40°14'20.903"N	104°47'34.480"W	0.20	
5131.00	0.030	346.280	5085.33	-402.52	413.66	251.86	40°14'20.902"N	104°47'34.479"W	0.29	
5216.00	0.350	103.820	5170.33	-402.47	413.61	252.11	40°14'20.902"N	104°47'34.476"W	0.43	
5301.00	0.510	122.000	5255.33	-402.19	413.35	252.68	40°14'20.899"N	104°47'34.469"W	0.25	
5387.00	0.370	147.220	5341.32	-401.73	412.92	253.15	40°14'20.895"N	104°47'34.462"W	0.27	
5472.00	0.520	101.380	5426.32	-401.40	412.61	253.68	40°14'20.892"N	104°47'34.456"W	0.44	
5557.00	0.520	101.900	5511.32	-401.21	412.45	254.44	40°14'20.890"N	104°47'34.446"W	0.01	
5642.00	0.810	95.060	5596.31	-401.04	412.32	255.41	40°14'20.889"N	104°47'34.433"W	0.35	
5727.00	0.600	195.910	5681.31	-400.54	411.84	255.89	40°14'20.884"N	104°47'34.427"W	1.29	
5813.00	0.810	181.930	5767.30	-399.50	410.80	255.74	40°14'20.874"N	104°47'34.429"W	0.31	
5898.00	0.990	190.280	5852.29	-398.19	409.48	255.59	40°14'20.861"N	104°47'34.431"W	0.26	
5983.00	0.440	273.090	5937.29	-397.50	408.77	255.14	40°14'20.854"N	104°47'34.437"W	1.21	
6068.00	0.740	283.120	6022.28	-397.68	408.91	254.28	40°14'20.855"N	104°47'34.448"W	0.37	
6153.00	0.490	303.660	6107.28	-398.04	409.24	253.44	40°14'20.858"N	104°47'34.459"W	0.39	
6239.00	0.890	293.410	6193.27	-398.55	409.71	252.52	40°14'20.863"N	104°47'34.471"W	0.48	
6323.00	0.710	294.320	6277.26	-399.07	410.18	251.45	40°14'20.868"N	104°47'34.484"W	0.21	
6408.00	0.170	240.190	6362.26	-399.25	410.34	250.86	40°14'20.869"N	104°47'34.492"W	0.74	
6494.00	0.090	31.990	6448.26	-399.25	410.33	250.78	40°14'20.869"N	104°47'34.493"W	0.29	
6579.00	1.460	198.020	6533.25	-398.29	409.36	250.48	40°14'20.860"N	104°47'34.497"W	1.82	
6622.00	6.420	181.590	6576.14	-395.38	406.43	250.25	40°14'20.831"N	104°47'34.500"W	11.71	
6664.00	10.770	178.460	6617.65	-389.11	400.16	250.29	40°14'20.769"N	104°47'34.499"W	10.41	
6707.00	13.740	178.480	6659.67	-379.98	391.04	250.53	40°14'20.679"N	104°47'34.496"W	6.91	
6749.00	16.850	178.400	6700.18	-368.90	379.96	250.83	40°14'20.569"N	104°47'34.492"W	7.40	
6792.00	19.200	180.230	6741.06	-355.61	366.66	250.98	40°14'20.438"N	104°47'34.491"W	5.62	
6834.00	21.390	182.940	6780.46	-341.08	352.10	250.56	40°14'20.294"N	104°47'34.496"W	5.67	
6877.00	25.610	184.280	6819.88	-324.04	335.00	249.46	40°14'20.125"N	104°47'34.510"W	9.89	
6919.00	29.170	184.310	6857.17	-304.85	315.73	248.01	40°14'19.934"N	104°47'34.529"W	8.48	
6962.00	34.560	182.450	6893.67	-282.28	293.08	246.70	40°14'19.711"N	104°47'34.546"W	12.74	
7005.00	39.070	179.980	6928.09	-256.57	267.33	246.19	40°14'19.456"N	104°47'34.552"W	11.04	
7048.00	43.720	178.260	6960.34	-228.16	238.91	246.64	40°14'19.175"N	104°47'34.546"W	11.13	
7090.00	47.180	178.340	6989.80	-198.24	209.00	247.53	40°14'18.880"N	104°47'34.535"W	8.24	
7133.00	51.140	177.280	7017.92	-165.71	176.50	248.78	40°14'18.559"N	104°47'34.519"W	9.40	
7175.00	55.560	176.730	7042.98	-132.03	142.85	250.55	40°14'18.226"N	104°47'34.496"W	10.58	

REFERENCE WELLPATH IDENTIFICATION			
Operator	KERR-MCGEE OIL & GAS ONSHORE LP	Slot	SLOT#25 DCP STATE 38N-17HZ (2168' FSL & 529' FEL, SEC.0
Area	COLORADO	Well	DCP STATE 38N-17HZ
Field	WELD COUNTY (KERR MCGEE)	Wellbore	DCP STATE 38N-17HZ AWP
Facility	SEC.08-T3N-R66W		

WELLPATH DATA (177 stations) † = interpolated/extrapolated station										
MD [ft]	Inclination [°]	Azimuth [°]	TVD [ft]	Vert Sect [ft]	North [ft]	East [ft]	Latitude	Longitude	DLS [°/100ft]	Comments
7218.00	61.700	175.920	7065.35	-95.34	106.23	252.91	40°14'17.864"N	104°47'34.466"W	14.37	
7260.00	66.900	177.060	7083.56	-57.51	68.47	255.22	40°14'17.491"N	104°47'34.436"W	12.62	
7303.00	73.530	179.190	7098.11	-17.08	28.06	256.52	40°14'17.092"N	104°47'34.419"W	16.11	
7345.00	74.950	179.830	7109.52	23.32	-12.36	256.87	40°14'16.692"N	104°47'34.415"W	3.69	
7388.00	75.120	179.470	7120.62	64.83	-53.90	257.12	40°14'16.282"N	104°47'34.411"W	0.90	
7430.00	79.080	179.760	7130.00	105.74	-94.83	257.40	40°14'15.877"N	104°47'34.408"W	9.45	
7473.00	83.950	179.490	7136.34	148.22	-137.35	257.68	40°14'15.457"N	104°47'34.404"W	11.34	
7506.00	85.790	178.540	7139.29	181.08	-170.21	258.24	40°14'15.132"N	104°47'34.397"W	6.27	
7542.00†	87.876	178.855	7141.28	217.02	-206.14	259.06	40°14'14.777"N	104°47'34.386"W	5.86	7" CASING POINT
7569.00	89.440	179.090	7141.91	244.00	-233.13	259.54	40°14'14.511"N	104°47'34.380"W	5.86	
7661.00	90.670	178.330	7141.82	335.98	-325.10	261.61	40°14'13.602"N	104°47'34.353"W	1.57	
7752.00	90.210	179.440	7141.12	426.95	-416.08	263.38	40°14'12.703"N	104°47'34.331"W	1.32	
7843.00	89.840	179.310	7141.08	517.90	-507.08	264.38	40°14'11.803"N	104°47'34.318"W	0.43	
7935.00	89.100	179.610	7141.93	609.85	-599.07	265.24	40°14'10.894"N	104°47'34.307"W	0.87	
8026.00	90.060	180.400	7142.60	700.76	-690.06	265.24	40°14'09.995"N	104°47'34.307"W	1.37	
8118.00	90.300	180.080	7142.31	792.66	-782.06	264.85	40°14'09.086"N	104°47'34.312"W	0.43	
8210.00	90.430	178.980	7141.73	884.60	-874.06	265.60	40°14'08.177"N	104°47'34.302"W	1.20	
8301.00	90.400	179.550	7141.07	975.56	-965.05	266.77	40°14'07.278"N	104°47'34.287"W	0.63	
8393.00	90.680	178.790	7140.20	1067.52	-1057.03	268.10	40°14'06.369"N	104°47'34.270"W	0.88	
8484.00	90.790	179.160	7139.03	1158.48	-1148.01	269.73	40°14'05.470"N	104°47'34.249"W	0.42	
8576.00	90.370	178.960	7138.10	1250.44	-1239.99	271.24	40°14'04.561"N	104°47'34.229"W	0.51	
8668.00	89.470	179.050	7138.23	1342.41	-1331.98	272.84	40°14'03.652"N	104°47'34.209"W	0.98	
8760.00	90.460	180.680	7138.29	1434.33	-1423.97	273.06	40°14'02.743"N	104°47'34.206"W	2.07	
8851.00	90.640	180.140	7137.41	1525.22	-1514.97	272.40	40°14'01.844"N	104°47'34.214"W	0.63	
8942.00	89.840	181.220	7137.03	1616.08	-1605.96	271.32	40°14'00.944"N	104°47'34.228"W	1.48	
9033.00	89.750	181.290	7137.36	1706.89	-1696.93	269.33	40°14'00.045"N	104°47'34.254"W	0.13	
9124.00	89.960	181.100	7137.59	1797.70	-1787.91	267.43	40°13'59.146"N	104°47'34.279"W	0.31	
9216.00	90.120	181.720	7137.52	1889.49	-1879.88	265.17	40°13'58.238"N	104°47'34.308"W	0.70	
9307.00	89.070	180.450	7138.17	1980.31	-1970.86	263.45	40°13'57.338"N	104°47'34.330"W	1.81	
9399.00	88.610	179.910	7140.03	2072.20	-2062.84	263.16	40°13'56.430"N	104°47'34.334"W	0.77	
9490.00	89.440	179.450	7141.58	2163.12	-2153.83	263.67	40°13'55.530"N	104°47'34.327"W	1.04	
9582.00	88.950	179.240	7142.87	2255.07	-2245.81	264.72	40°13'54.621"N	104°47'34.314"W	0.58	
9673.00	89.380	179.150	7144.20	2346.02	-2336.79	266.00	40°13'53.722"N	104°47'34.297"W	0.48	
9765.00	90.610	179.340	7144.20	2437.98	-2428.78	267.21	40°13'52.813"N	104°47'34.282"W	1.35	
9857.00	89.720	178.790	7143.94	2529.94	-2520.77	268.71	40°13'51.904"N	104°47'34.262"W	1.14	
9948.00	90.520	179.470	7143.75	2620.91	-2611.76	270.09	40°13'51.005"N	104°47'34.244"W	1.15	
10040.00	89.870	179.530	7143.44	2712.85	-2703.75	270.89	40°13'50.096"N	104°47'34.234"W	0.71	
10131.00	91.050	179.830	7142.71	2803.79	-2794.75	271.40	40°13'49.197"N	104°47'34.228"W	1.34	
10222.00	90.060	179.430	7141.82	2894.72	-2885.74	271.99	40°13'48.298"N	104°47'34.220"W	1.17	
10313.00	91.200	180.040	7140.82	2985.65	-2976.73	272.41	40°13'47.399"N	104°47'34.215"W	1.42	
10398.00	89.410	180.260	7140.37	3070.56	-3061.73	272.19	40°13'46.559"N	104°47'34.217"W	2.12	
10484.00	90.430	180.080	7140.49	3156.47	-3147.72	271.93	40°13'45.709"N	104°47'34.211"W	1.20	
10569.00	89.780	179.310	7140.34	3241.40	-3232.72	272.39	40°13'44.869"N	104°47'34.215"W	1.19	
10654.00	90.430	179.290	7140.18	3326.36	-3317.72	273.42	40°13'44.029"N	104°47'34.202"W	0.77	
10739.00	90.030	179.220	7139.84	3411.33	-3402.71	274.53	40°13'43.189"N	104°47'34.187"W	0.48	



Actual Wellpath Report

DCP STATE 38N-17HZ AWP

Page 5 of 8



REFERENCE WELLPATH IDENTIFICATION

Operator	KERR-MCGEE OIL & GAS ONSHORE LP	Slot	SLOT#25 DCP STATE 38N-17HZ (2168' FSL & 529' FEL, SEC.0
Area	COLORADO	Well	DCP STATE 38N-17HZ
Field	WELD COUNTY (KERR MCGEE)	Wellbore	DCP STATE 38N-17HZ AWP
Facility	SEC.08-T3N-R66W		

WELLPATH DATA (177 stations)

MD [ft]	Inclination [°]	Azimuth [°]	TVD [ft]	Vert Sect [ft]	North [ft]	East [ft]	Latitude	Longitude	DLS [°/100ft]	Comments
10824.00	89.380	179.270	7140.28	3496.29	-3487.70	275.65	40°13'42.349"N	104°47'34.173"W	0.77	
10909.00	90.950	179.480	7140.03	3581.24	-3572.69	276.58	40°13'41.509"N	104°47'34.161"W	1.86	
10995.00	89.380	178.870	7139.78	3667.20	-3658.68	277.81	40°13'40.660"N	104°47'34.145"W	1.96	
11080.00	89.840	180.310	7140.36	3752.15	-3743.67	278.42	40°13'39.820"N	104°47'34.137"W	1.78	
11165.00	89.660	179.950	7140.73	3837.06	-3828.67	278.23	40°13'38.980"N	104°47'34.140"W	0.47	
11250.00	90.490	181.410	7140.62	3921.93	-3913.66	277.22	40°13'38.140"N	104°47'34.153"W	1.98	
11335.00	90.090	181.830	7140.19	4006.71	-3998.63	274.82	40°13'37.300"N	104°47'34.184"W	0.68	
11420.00	89.070	181.190	7140.81	4091.51	-4083.59	272.58	40°13'36.461"N	104°47'34.213"W	1.42	
11505.00	88.540	181.170	7142.59	4176.32	-4168.56	270.83	40°13'35.621"N	104°47'34.235"W	0.62	
11590.00	87.680	180.860	7145.39	4261.12	-4253.49	269.32	40°13'34.782"N	104°47'34.255"W	1.08	
11675.00	88.700	180.260	7148.08	4345.95	-4338.45	268.49	40°13'33.942"N	104°47'34.265"W	1.39	
11760.00	88.180	180.360	7150.39	4430.82	-4423.41	268.03	40°13'33.103"N	104°47'34.271"W	0.62	
11845.00	89.780	179.050	7151.90	4515.75	-4508.39	268.47	40°13'32.263"N	104°47'34.266"W	2.43	
11930.00	90.030	178.690	7152.04	4600.72	-4593.38	270.15	40°13'31.423"N	104°47'34.244"W	0.52	
12016.00	90.000	178.280	7152.02	4686.71	-4679.35	272.42	40°13'30.573"N	104°47'34.215"W	0.48	
12101.00	89.720	179.540	7152.23	4771.69	-4764.33	274.04	40°13'29.734"N	104°47'34.194"W	1.52	
12186.00	89.350	178.440	7152.92	4856.65	-4849.31	275.54	40°13'28.894"N	104°47'34.175"W	1.37	
12271.00	89.070	178.410	7154.09	4941.64	-4934.27	277.87	40°13'28.054"N	104°47'34.144"W	0.33	
12356.00	89.320	178.390	7155.28	5026.62	-5019.23	280.25	40°13'27.215"N	104°47'34.114"W	0.30	
12441.00	89.410	178.750	7156.23	5111.60	-5104.20	282.37	40°13'26.375"N	104°47'34.087"W	0.44	
12526.00	89.160	178.710	7157.29	5196.58	-5189.17	284.25	40°13'25.535"N	104°47'34.062"W	0.30	
12611.00	88.760	178.030	7158.83	5281.55	-5274.12	286.67	40°13'24.696"N	104°47'34.031"W	0.93	
12696.00	88.750	177.690	7160.68	5366.53	-5359.04	289.84	40°13'23.857"N	104°47'33.990"W	0.40	
12781.00	89.260	179.410	7162.15	5451.50	-5444.00	291.99	40°13'23.017"N	104°47'33.963"W	2.11	
12866.00	88.850	179.050	7163.55	5536.45	-5528.98	293.13	40°13'22.177"N	104°47'33.948"W	0.64	
12952.00	88.350	178.580	7165.66	5622.41	-5614.94	294.91	40°13'21.328"N	104°47'33.925"W	0.80	
13037.00	89.070	180.230	7167.57	5707.34	-5699.91	295.79	40°13'20.488"N	104°47'33.914"W	2.12	
13122.00	89.440	181.920	7168.67	5792.17	-5784.88	294.20	40°13'19.649"N	104°47'33.934"W	2.04	
13207.00	88.080	179.730	7170.51	5877.00	-5869.84	292.98	40°13'18.809"N	104°47'33.950"W	3.03	
13292.00	88.820	179.610	7172.81	5961.91	-5954.81	293.46	40°13'17.969"N	104°47'33.944"W	0.88	
13378.00	89.340	179.860	7174.19	6047.84	-6040.80	293.86	40°13'17.120"N	104°47'33.939"W	0.67	
13463.00	89.530	180.290	7175.03	6132.75	-6125.79	293.75	40°13'16.280"N	104°47'33.940"W	0.55	
13548.00	89.160	180.240	7176.00	6217.65	-6210.79	293.36	40°13'15.440"N	104°47'33.945"W	0.44	
13633.00	89.250	181.160	7177.18	6302.51	-6295.77	292.32	40°13'14.600"N	104°47'33.958"W	1.09	
13719.00	88.950	178.430	7178.53	6388.43	-6381.75	292.63	40°13'13.750"N	104°47'33.954"W	3.19	
13804.00	89.030	178.950	7180.03	6473.40	-6466.72	294.57	40°13'12.911"N	104°47'33.929"W	0.62	
13889.00	88.790	179.660	7181.65	6558.34	-6551.69	295.60	40°13'12.071"N	104°47'33.916"W	0.88	
13974.00	88.610	179.900	7183.58	6643.26	-6636.67	295.93	40°13'11.231"N	104°47'33.912"W	0.35	
14059.00	88.480	179.990	7185.74	6728.15	-6721.64	296.01	40°13'10.392"N	104°47'33.911"W	0.19	
14144.00	88.480	179.440	7187.99	6813.06	-6806.61	296.43	40°13'09.552"N	104°47'33.906"W	0.65	
14232.00	88.020	179.910	7190.68	6900.96	-6894.57	296.93	40°13'08.683"N	104°47'33.899"W	0.75	LAST BHI MWD+IFR SURVEY
14287.00	88.020	179.910	7192.58	6955.88	-6949.54	297.02	40°13'08.140"N	104°47'33.898"W	0.00	PROJECTION TO BIT



Actual Wellpath Report

DCP STATE 38N-17HZ AWP

Page 6 of 8



REFERENCE WELLPATH IDENTIFICATION

Operator	KERR-MCGEE OIL & GAS ONSHORE LP	Slot	SLOT#25 DCP STATE 38N-17HZ (2168' FSL & 529' FEL, SEC.0
Area	COLORADO	Well	DCP STATE 38N-17HZ
Field	WELD COUNTY (KERR MCGEE)	Wellbore	DCP STATE 38N-17HZ AWB
Facility	SEC.08-T3N-R66W		

HOLE & CASING SECTIONS - Ref Wellbore: DCP STATE 38N-17HZ AWB Ref Wellpath: DCP STATE 38N-17HZ AWP

String/Diameter	Start MD [ft]	End MD [ft]	Interval [ft]	Start TVD [ft]	End TVD [ft]	Start N/S [ft]	Start E/W [ft]	End N/S [ft]	End E/W [ft]
13.5in Open Hole	16.00	924.00	908.00	16.00	923.99	0.00	0.00	-0.71	-2.24
9.625in Casing Surface	16.00	924.00	908.00	16.00	923.99	0.00	0.00	-0.71	-2.24
8.75in Open Hole	924.00	7562.00	6638.00	923.99	7141.82	-0.71	-2.24	-226.13	259.43
7in Casing Intermediate	16.00	7542.00	7526.00	16.00	7141.28	0.00	0.00	-206.14	259.06
6.125in Open Hole	7562.00	14287.00	6725.00	7141.82	7192.58	-226.13	259.43	-6949.54	297.02

TARGETS

Name	MD [ft]	TVD [ft]	North [ft]	East [ft]	Grid East [US ft]	Grid North [US ft]	Latitude	Longitude	Shape
OLIN RAY E UNIT 2 150' RADIUS		860.00	-6100.70	-689.02	3196507.90	1324226.03	40°13'16.528"N	104°47'46.609"W	circle
STATE L16-3 150' RADIUS		860.00	-2809.53	2484.84	3199655.31	1327542.22	40°13'49.050"N	104°47'05.690"W	circle
STATE L16-4 150' RADIUS		860.00	-2668.28	966.89	3198136.35	1327671.37	40°13'50.446"N	104°47'25.261"W	circle
SEC.08-T3N-R66W HARDLINES (460' SETBACKS)		4871.00	-0.04	-29.87	3197118.41	1330331.47	40°14'16.814"N	104°47'38.112"W	polygon
SEC.08-T3N-R66W SECTION LINES		4871.00	-0.04	-29.87	3197118.41	1330331.47	40°14'16.814"N	104°47'38.112"W	polygon
SEC.17-T3N-R66W HARDLINES (460' SETBACKS)		4871.00	-0.04	-29.87	3197118.41	1330331.47	40°14'16.814"N	104°47'38.112"W	polygon
SEC.17-T3N-R66W SECTION LINES		4871.00	-0.04	-29.87	3197118.41	1330331.47	40°14'16.814"N	104°47'38.112"W	polygon
UPRC 9-12K 150' RADIUS		7152.00	-1445.96	1157.04	3198316.74	1328895.11	40°14'02.525"N	104°47'22.808"W	circle
DCP STATE 38N-17HZ LAND BOX		7191.00	-0.04	-29.87	3197118.41	1330331.47	40°14'16.814"N	104°47'38.112"W	polygon
DCP 38N-17HZ BHL ON PLAT (460' FSL & 275' FEL, SEC.17) REV-3		7193.00	-6975.60	293.57	3197497.38	1323359.02	40°13'07.882"N	104°47'33.942"W	point
DCP 38N-17HZ BHL ON PLAT (460' FSL & 50' FEL, SEC.17) REV-1		7193.00	-6975.60	518.57	3197722.36	1323360.82	40°13'07.882"N	104°47'31.042"W	point



Actual Wellpath Report

DCP STATE 38N-17HZ AWP

Page 7 of 8



REFERENCE WELLPATH IDENTIFICATION

Operator	KERR-MCGEE OIL & GAS ONSHORE LP	Slot	SLOT#25 DCP STATE 38N-17HZ (2168' FSL & 529' FEL, SEC.0
Area	COLORADO	Well	DCP STATE 38N-17HZ
Field	WELD COUNTY (KERR MCGEE)	Wellbore	DCP STATE 38N-17HZ AWB
Facility	SEC.08-T3N-R66W		

WELLPATH COMPOSITION - Ref Wellbore: DCP STATE 38N-17HZ AWB Ref Wellpath: DCP STATE 38N-17HZ AWP

Start MD [ft]	End MD [ft]	Positional Uncertainty Model	Log Name/Comment	Wellbore
16.00	834.00	Generic gyro - continuous (Standard)	MS ENERGY SERVICES GYRO SURVEYS <116-834>	DCP STATE 38N-17HZ AWB
834.00	7506.00	NaviTrak (MAGCORR,IFR)	BHI NAVITRAK MWD+IFR 8 3/4" <973-7506>	DCP STATE 38N-17HZ AWB
7506.00	14232.00	NaviTrak (MAGCORR,IFR)	BHI NAVITRAK MWD+IFR 6 1/8" <7569-14232>	DCP STATE 38N-17HZ AWB
14232.00	14287.00	Blind Drilling (std)	Projection to bit	DCP STATE 38N-17HZ AWB



Actual Wellpath Report

DCP STATE 38N-17HZ AWP

Page 8 of 8



REFERENCE WELLPATH IDENTIFICATION

Operator	KERR-MCGEE OIL & GAS ONSHORE LP	Slot	SLOT#25 DCP STATE 38N-17HZ (2168' FSL & 529' FEL, SEC.0
Area	COLORADO	Well	DCP STATE 38N-17HZ
Field	WELD COUNTY (KERR MCGEE)	Wellbore	DCP STATE 38N-17HZ AWP
Facility	SEC.08-T3N-R66W		

WELLPATH COMMENTS

MD [ft]	Inclination [°]	Azimuth [°]	TVD [ft]	Comment
16.00	0.000	222.440	16.00	TIE ON
116.00	0.270	222.440	116.00	BEGIN GYRO SURVEYS
834.00	0.250	283.650	833.99	TIE ONTO GYRO SURVEYS
973.00	0.090	356.230	972.99	BEGIN BHI MWD+IFR SURVEYS
7542.00	87.876	178.855	7141.28	7" CASING POINT
14232.00	88.020	179.910	7190.68	LAST BHI MWD+IFR SURVEY
14287.00	88.020	179.910	7192.58	PROJECTION TO BIT