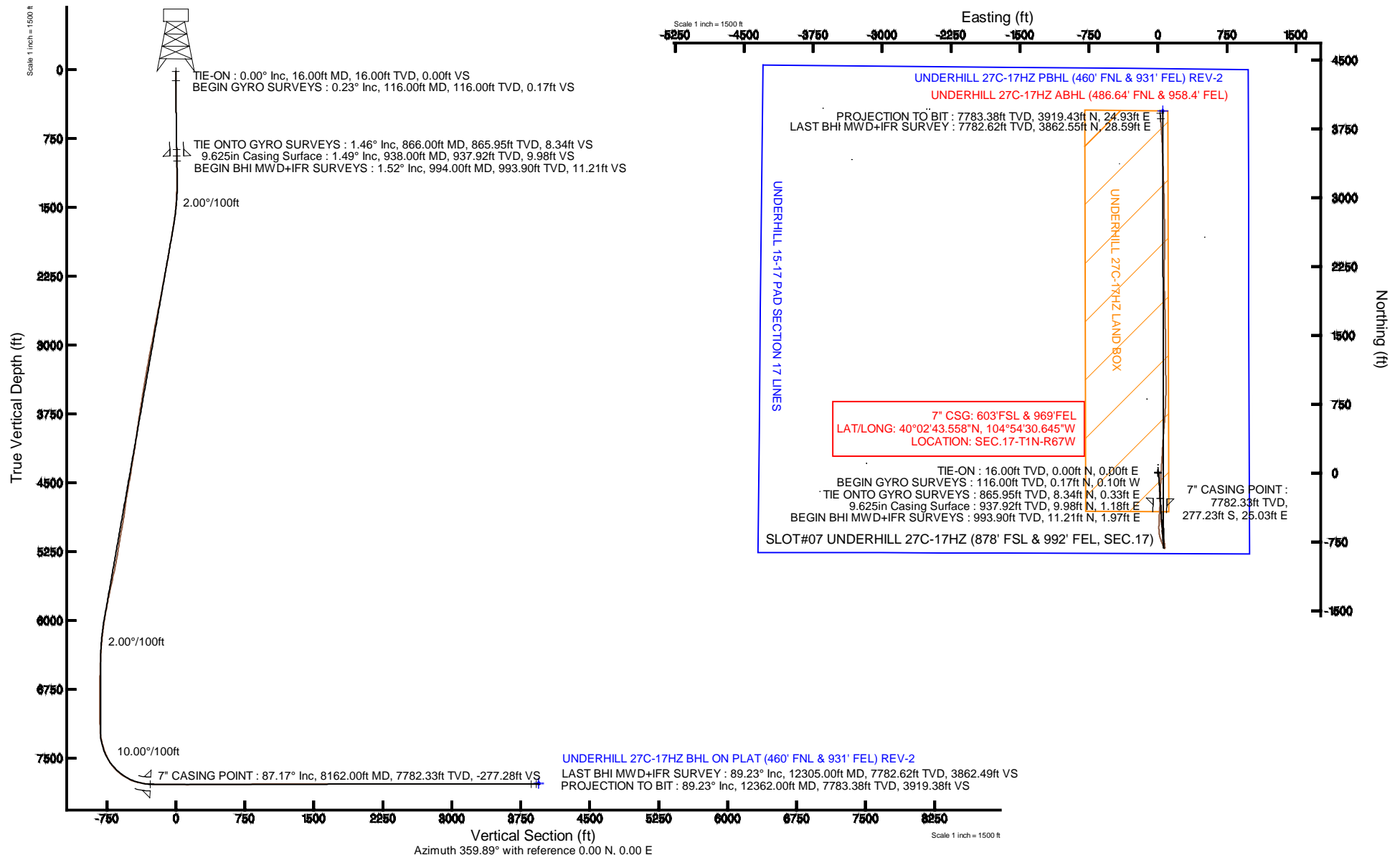


KERR-MCGEE OIL & GAS ONSHORE LP

Location: COLORADO Slot: SLOT#07 UNDERHILL 27C-17HZ (878' FSL & 992' FEL, SEC.17)
 Field: WELD COUNTY (KERR MCGEE) Well: UNDERHILL 27C-17HZ
 Facility: SEC.17-T1N-R67W Wellbore: UNDERHILL 27C-17HZ PWB

Plot reference wellpath is UNDERHILL 27C-17HZ (REV-A.0) PWP

True vertical depths are referenced to XTREME 24 (16KB) (RKB)	Grid System: NAD83 / Lambert Colorado SP, Northern Zone (501), US feet
Measured depths are referenced to XTREME 24 (16KB) (RKB)	North Reference: True north
XTREME 24 (16KB) (RKB) to Mean Sea Level: 5119 feet	Scale: True distance
Mean Sea Level to Mud line (At Slot: SLOT#07 UNDERHILL 27C-17HZ (878' FSL & 992' FEL, SEC.17)): 0 feet	Depths are in feet
Coordinates are in feet referenced to Slot	Created by: robiale01 on 12/Sep/2013





Actual Wellpath Report

UNDERHILL 27C-17HZ AWP

Page 1 of 7



REFERENCE WELLPATH IDENTIFICATION

Operator	KERR-MCGEE OIL & GAS ONSHORE LP	Slot	SLOT#07 UNDERHILL 27C-17HZ (878' FSL & 992' FEL, SEC.17)
Area	COLORADO	Well	UNDERHILL 27C-17HZ
Field	WELD COUNTY (KERR MCGEE)	Wellbore	UNDERHILL 27C-17HZ AWB
Facility	SEC.17-T1N-R67W		

REPORT SETUP INFORMATION

Projection System	NAD83 / Lambert Colorado SP, Northern Zone (501), US feet	Software System	WellArchitect® 4.0.0
North Reference	True	User	Robiale01
Scale	0.999963	Report Generated	12/Sep/2013 at 08:27
Convergence at slot	n/a	Database/Source file	WA_ANADARKO/UNDERHILL_27C-17HZ_AWB.xml

WELLPATH LOCATION

	Local coordinates		Grid coordinates		Geographic coordinates	
	North[ft]	East[ft]	Easting[US ft]	Northing[US ft]	Latitude	Longitude
Slot Location	-1774.12	1667.50	3165568.84	1260226.21	40°02'46.298"N	104°54'30.967"W
Facility Reference Pt			3163889.72	1261989.21	40°03'03.831"N	104°54'52.408"W
Field Reference Pt			3197771.84	1268891.29	40°04'09.600"N	104°47'36.000"W

WELLPATH DATUM

Calculation method	Minimum curvature	XTREME 24 (16'KB) (RKB) to Facility Vertical Datum	5119.00ft
Horizontal Reference Pt	Slot	XTREME 24 (16'KB) (RKB) to Mean Sea Level	5119.00ft
Vertical Reference Pt	XTREME 24 (16'KB) (RKB)	XTREME 24 (16'KB) (RKB) to Mud Line at Slot (SLOT#07 UNDERHILL 27C-17HZ (878' FSL & 992' FEL, SEC.17))	5119.00ft
MD Reference Pt	XTREME 24 (16'KB) (RKB)	Section Origin	N 0.00, E 0.00 ft
Field Vertical Reference	Mean Sea Level	Section Azimuth	359.89°



Actual Wellpath Report

UNDERHILL 27C-17HZ AWP

Page 2 of 7



REFERENCE WELLPATH IDENTIFICATION

Operator	KERR-MCGEE OIL & GAS ONSHORE LP	Slot	SLOT#07 UNDERHILL 27C-17HZ (878' FSL & 992' FEL, SEC.17)
Area	COLORADO	Well	UNDERHILL 27C-17HZ
Field	WELD COUNTY (KERR MCGEE)	Wellbore	UNDERHILL 27C-17HZ AWP
Facility	SEC.17-T1N-R67W		

WELLPATH DATA (151 stations) † = interpolated/extrapolated station

MD [ft]	Inclination [°]	Azimuth [°]	TVD [ft]	Vert Sect [ft]	North [ft]	East [ft]	Latitude	Longitude	DLS [°/100ft]	Comments
0.00†	0.000	328.580	0.00	0.00	0.00	0.00	40°02'46.298"N	104°54'30.967"W	0.00	
16.00	0.000	328.580	16.00	0.00	0.00	0.00	40°02'46.298"N	104°54'30.967"W	0.00	TIE-ON
116.00	0.230	328.580	116.00	0.17	0.17	-0.10	40°02'46.300"N	104°54'30.968"W	0.23	BEGIN GYRO SURVEYS
216.00	0.340	356.330	216.00	0.64	0.64	-0.23	40°02'46.304"N	104°54'30.970"W	0.17	
316.00	0.490	3.960	316.00	1.36	1.36	-0.22	40°02'46.311"N	104°54'30.970"W	0.16	
416.00	0.620	351.900	415.99	2.32	2.32	-0.26	40°02'46.321"N	104°54'30.970"W	0.17	
516.00	0.790	357.820	515.98	3.55	3.55	-0.37	40°02'46.333"N	104°54'30.972"W	0.18	
616.00	0.760	349.890	615.97	4.89	4.89	-0.51	40°02'46.346"N	104°54'30.974"W	0.11	
716.00	0.640	16.210	715.97	6.08	6.08	-0.47	40°02'46.358"N	104°54'30.973"W	0.34	
816.00	0.920	18.810	815.96	7.38	7.38	-0.06	40°02'46.371"N	104°54'30.968"W	0.28	
866.00	1.460	23.830	865.95	8.34	8.34	0.33	40°02'46.380"N	104°54'30.963"W	1.10	TIE ONTO GYRO SURVEYS
994.00	1.520	35.370	993.90	11.21	11.21	1.97	40°02'46.409"N	104°54'30.942"W	0.24	BEGIN BHI MWD+IFR SURVEYS
1088.00	0.830	42.750	1087.88	12.72	12.73	3.16	40°02'46.424"N	104°54'30.926"W	0.75	
1182.00	1.630	117.200	1181.87	12.61	12.62	4.81	40°02'46.423"N	104°54'30.905"W	1.72	
1276.00	3.080	144.290	1275.79	9.94	9.96	7.47	40°02'46.396"N	104°54'30.871"W	1.90	
1370.00	2.010	155.340	1369.69	6.39	6.41	9.63	40°02'46.361"N	104°54'30.843"W	1.25	
1464.00	3.710	162.150	1463.57	1.99	2.02	11.25	40°02'46.318"N	104°54'30.822"W	1.84	
1558.00	6.620	169.170	1557.18	-6.23	-6.20	13.20	40°02'46.237"N	104°54'30.797"W	3.16	
1653.00	8.700	179.080	1651.33	-18.79	-18.77	14.35	40°02'46.113"N	104°54'30.783"W	2.59	
1747.00	10.120	181.660	1744.07	-34.16	-34.13	14.22	40°02'45.961"N	104°54'30.784"W	1.58	
1841.00	9.960	178.890	1836.63	-50.54	-50.51	14.14	40°02'45.799"N	104°54'30.785"W	0.54	
1935.00	9.450	178.510	1929.28	-66.38	-66.36	14.50	40°02'45.642"N	104°54'30.781"W	0.55	
2030.00	9.150	179.840	2023.03	-81.73	-81.71	14.72	40°02'45.491"N	104°54'30.778"W	0.39	
2121.00	10.440	175.360	2112.71	-97.19	-97.16	15.41	40°02'45.338"N	104°54'30.769"W	1.65	
2212.00	11.140	177.770	2202.10	-114.19	-114.16	16.42	40°02'45.170"N	104°54'30.756"W	0.92	
2304.00	10.420	178.440	2292.47	-131.39	-131.36	16.99	40°02'45.000"N	104°54'30.749"W	0.79	
2395.00	10.200	181.670	2382.00	-147.67	-147.64	16.98	40°02'44.839"N	104°54'30.749"W	0.68	
2486.00	10.470	178.580	2471.53	-163.99	-163.96	16.95	40°02'44.678"N	104°54'30.749"W	0.68	
2577.00	11.680	180.310	2560.83	-181.47	-181.44	17.11	40°02'44.505"N	104°54'30.747"W	1.38	
2668.00	10.980	181.520	2650.06	-199.34	-199.31	16.83	40°02'44.328"N	104°54'30.751"W	0.81	
2759.00	10.630	180.420	2739.45	-216.40	-216.37	16.54	40°02'44.160"N	104°54'30.754"W	0.45	
2851.00	10.340	178.870	2829.91	-233.14	-233.11	16.64	40°02'43.994"N	104°54'30.753"W	0.44	
2941.00	10.990	174.060	2918.36	-249.75	-249.72	17.68	40°02'43.830"N	104°54'30.740"W	1.22	
3032.00	11.340	172.180	3007.63	-267.24	-267.21	19.80	40°02'43.657"N	104°54'30.712"W	0.55	
3124.00	10.670	172.810	3097.94	-284.66	-284.62	22.10	40°02'43.485"N	104°54'30.683"W	0.74	
3216.00	10.310	169.090	3188.40	-301.20	-301.15	24.72	40°02'43.322"N	104°54'30.649"W	0.83	
3307.00	10.200	170.720	3277.95	-317.15	-317.10	27.56	40°02'43.164"N	104°54'30.613"W	0.34	
3399.00	9.890	177.730	3368.54	-333.09	-333.04	29.19	40°02'43.007"N	104°54'30.592"W	1.37	
3490.00	9.950	172.470	3458.19	-348.69	-348.64	30.53	40°02'42.853"N	104°54'30.574"W	1.00	
3581.00	8.520	170.820	3548.00	-363.15	-363.09	32.63	40°02'42.710"N	104°54'30.547"W	1.60	
3674.00	8.950	177.420	3639.93	-377.18	-377.12	34.06	40°02'42.571"N	104°54'30.529"W	1.17	
3767.00	8.600	182.470	3731.84	-391.35	-391.29	34.08	40°02'42.431"N	104°54'30.529"W	0.91	
3861.00	9.110	180.940	3824.72	-405.81	-405.75	33.66	40°02'42.288"N	104°54'30.534"W	0.60	
3954.00	7.440	183.540	3916.75	-419.19	-419.13	33.17	40°02'42.156"N	104°54'30.541"W	1.84	
4047.00	7.470	181.060	4008.96	-431.24	-431.18	32.68	40°02'42.037"N	104°54'30.547"W	0.35	



Actual Wellpath Report

UNDERHILL 27C-17HZ AWP

Page 3 of 7



REFERENCE WELLPATH IDENTIFICATION				
Operator	KERR-MCGEE OIL & GAS ONSHORE LP	Slot	SLOT#07 UNDERHILL 27C-17HZ (878' FSL & 992' FEL, SEC.17)	
Area	COLORADO	Well	UNDERHILL 27C-17HZ	
Field	WELD COUNTY (KERR MCGEE)	Wellbore	UNDERHILL 27C-17HZ AWP	
Facility	SEC.17-T1N-R67W			

WELLPATH DATA (151 stations)										
MD [ft]	Inclination [°]	Azimuth [°]	TVD [ft]	Vert Sect [ft]	North [ft]	East [ft]	Latitude	Longitude	DLS [°/100ft]	Comments
4141.00	8.190	185.060	4102.09	-444.02	-443.96	31.98	40°02'41.911"N	104°54'30.556"W	0.96	
4234.00	10.050	182.710	4193.91	-458.72	-458.66	31.01	40°02'41.765"N	104°54'30.568"W	2.04	
4327.00	8.740	177.130	4285.66	-473.88	-473.83	30.98	40°02'41.616"N	104°54'30.569"W	1.71	
4421.00	8.960	178.890	4378.54	-488.34	-488.28	31.48	40°02'41.473"N	104°54'30.562"W	0.37	
4514.00	10.290	178.860	4470.23	-503.88	-503.82	31.79	40°02'41.319"N	104°54'30.558"W	1.43	
4607.00	10.770	170.390	4561.67	-520.76	-520.70	33.40	40°02'41.152"N	104°54'30.538"W	1.74	
4701.00	8.740	169.720	4654.30	-536.45	-536.39	36.14	40°02'40.997"N	104°54'30.502"W	2.16	
4786.00	7.400	165.130	4738.46	-548.10	-548.03	38.70	40°02'40.882"N	104°54'30.469"W	1.75	
4872.00	7.650	169.340	4823.72	-559.08	-559.01	41.18	40°02'40.774"N	104°54'30.438"W	0.70	
4957.00	9.670	171.870	4907.75	-571.72	-571.64	43.24	40°02'40.649"N	104°54'30.411"W	2.42	
5042.00	11.030	175.150	4991.36	-586.89	-586.81	44.93	40°02'40.499"N	104°54'30.389"W	1.74	
5127.00	9.990	178.840	5074.94	-602.36	-602.28	45.77	40°02'40.346"N	104°54'30.378"W	1.46	
5213.00	8.600	179.730	5159.81	-616.25	-616.17	45.95	40°02'40.209"N	104°54'30.376"W	1.62	
5298.00	9.430	182.560	5243.76	-629.57	-629.48	45.67	40°02'40.077"N	104°54'30.380"W	1.11	
5383.00	10.380	175.380	5327.49	-644.16	-644.07	45.98	40°02'39.933"N	104°54'30.376"W	1.83	
5468.00	11.380	169.460	5410.96	-660.04	-659.95	48.13	40°02'39.776"N	104°54'30.348"W	1.76	
5553.00	12.420	167.400	5494.14	-677.21	-677.12	51.65	40°02'39.607"N	104°54'30.303"W	1.32	
5638.00	12.820	167.250	5577.08	-695.34	-695.23	55.73	40°02'39.428"N	104°54'30.250"W	0.47	
5723.00	12.570	169.080	5660.01	-713.62	-713.51	59.56	40°02'39.247"N	104°54'30.201"W	0.56	
5808.00	11.360	165.200	5743.16	-730.81	-730.69	63.45	40°02'39.077"N	104°54'30.151"W	1.71	
5893.00	11.180	167.970	5826.52	-746.97	-746.84	67.31	40°02'38.918"N	104°54'30.102"W	0.67	
5978.00	10.360	173.290	5910.02	-762.62	-762.49	69.92	40°02'38.763"N	104°54'30.068"W	1.52	
6064.00	8.880	179.970	5994.82	-776.94	-776.81	70.83	40°02'38.621"N	104°54'30.056"W	2.15	
6149.00	7.580	172.900	6078.94	-789.07	-788.94	71.52	40°02'38.502"N	104°54'30.047"W	1.94	
6234.00	6.420	162.670	6163.31	-799.17	-799.04	73.63	40°02'38.402"N	104°54'30.020"W	2.00	
6319.00	5.460	172.630	6247.85	-807.72	-807.59	75.57	40°02'38.317"N	104°54'29.995"W	1.65	
6405.00	3.610	196.110	6333.59	-814.38	-814.25	75.34	40°02'38.251"N	104°54'29.998"W	3.01	
6490.00	2.860	182.900	6418.45	-819.07	-818.93	74.49	40°02'38.205"N	104°54'30.009"W	1.24	
6575.00	1.880	181.250	6503.38	-822.58	-822.45	74.35	40°02'38.170"N	104°54'30.011"W	1.16	
6661.00	2.080	188.770	6589.33	-825.53	-825.40	74.08	40°02'38.141"N	104°54'30.014"W	0.38	
6746.00	0.900	279.100	6674.31	-826.95	-826.82	73.19	40°02'38.127"N	104°54'30.026"W	2.67	
6916.00	0.360	321.510	6844.30	-826.32	-826.19	71.54	40°02'38.133"N	104°54'30.047"W	0.40	
7087.00	0.210	98.920	7015.29	-825.95	-825.82	71.51	40°02'38.137"N	104°54'30.047"W	0.31	
7172.00	0.410	74.980	7100.29	-825.89	-825.76	71.96	40°02'38.138"N	104°54'30.042"W	0.28	
7257.00	2.050	353.510	7185.27	-824.30	-824.17	72.08	40°02'38.153"N	104°54'30.040"W	2.39	
7300.00	6.210	343.040	7228.15	-821.31	-821.18	71.32	40°02'38.183"N	104°54'30.050"W	9.79	
7342.00	9.620	339.120	7269.75	-815.85	-815.73	69.40	40°02'38.237"N	104°54'30.075"W	8.22	
7385.00	13.130	336.560	7311.90	-808.01	-807.89	66.18	40°02'38.314"N	104°54'30.116"W	8.24	
7427.00	16.550	337.260	7352.49	-798.10	-797.99	61.97	40°02'38.412"N	104°54'30.170"W	8.15	
7470.00	20.330	335.100	7393.28	-785.67	-785.56	56.45	40°02'38.535"N	104°54'30.241"W	8.93	
7512.00	23.390	334.640	7432.25	-771.50	-771.41	49.81	40°02'38.675"N	104°54'30.327"W	7.30	
7555.00	26.490	335.280	7471.24	-755.06	-754.98	42.14	40°02'38.837"N	104°54'30.425"W	7.24	
7597.00	28.860	337.660	7508.43	-737.16	-737.09	34.37	40°02'39.014"N	104°54'30.525"W	6.23	
7639.00	32.820	342.630	7544.49	-716.89	-716.84	27.12	40°02'39.214"N	104°54'30.618"W	11.20	
7682.00	37.380	347.030	7579.67	-693.02	-692.99	20.70	40°02'39.450"N	104°54'30.701"W	12.12	



Actual Wellpath Report

UNDERHILL 27C-17HZ AWP

Page 4 of 7



REFERENCE WELLPATH IDENTIFICATION

Operator	KERR-MCGEE OIL & GAS ONSHORE LP	Slot	SLOT#07 UNDERHILL 27C-17HZ (878' FSL & 992' FEL, SEC.17)
Area	COLORADO	Well	UNDERHILL 27C-17HZ
Field	WELD COUNTY (KERR MCGEE)	Wellbore	UNDERHILL 27C-17HZ AWP
Facility	SEC.17-T1N-R67W		

WELLPATH DATA (151 stations) † = interpolated/extrapolated station

MD [ft]	Inclination [°]	Azimuth [°]	TVD [ft]	Vert Sect [ft]	North [ft]	East [ft]	Latitude	Longitude	DLS [°/100ft]	Comments
7724.00	42.380	351.080	7611.89	-666.59	-666.56	15.64	40°02'39.711"N	104°54'30.766"W	13.41	
7767.00	47.550	355.020	7642.31	-636.43	-636.41	12.02	40°02'40.009"N	104°54'30.812"W	13.65	
7809.00	51.550	359.640	7669.56	-604.52	-604.51	10.57	40°02'40.324"N	104°54'30.831"W	12.68	
7852.00	56.080	1.670	7694.95	-569.83	-569.81	10.98	40°02'40.667"N	104°54'30.826"W	11.20	
7894.00	60.820	1.950	7716.92	-534.07	-534.05	12.11	40°02'41.020"N	104°54'30.811"W	11.30	
7936.00	65.740	2.330	7735.79	-496.60	-496.57	13.52	40°02'41.391"N	104°54'30.793"W	11.74	
7979.00	71.000	3.310	7751.64	-456.69	-456.66	15.49	40°02'41.785"N	104°54'30.768"W	12.41	
8021.00	75.380	3.810	7763.78	-416.58	-416.55	17.99	40°02'42.182"N	104°54'30.736"W	10.49	
8064.00	80.330	3.440	7772.83	-374.64	-374.61	20.64	40°02'42.596"N	104°54'30.702"W	11.54	
8114.00	85.180	2.440	7779.13	-325.13	-325.09	23.18	40°02'43.085"N	104°54'30.669"W	9.90	
8162.00†	87.168	1.973	7782.33	-277.28	-277.23	25.03	40°02'43.558"N	104°54'30.645"W	4.25	7" CASING POINT
8219.00	89.530	1.420	7783.98	-220.33	-220.28	26.71	40°02'44.121"N	104°54'30.624"W	4.25	
8304.00	89.160	2.730	7784.95	-135.40	-135.35	29.79	40°02'44.960"N	104°54'30.584"W	1.60	
8389.00	88.640	1.670	7786.58	-50.49	-50.43	33.05	40°02'45.800"N	104°54'30.542"W	1.39	
8475.00	89.470	2.810	7788.00	35.43	35.49	36.41	40°02'46.649"N	104°54'30.499"W	1.64	
8560.00	90.000	3.620	7788.39	120.28	120.36	41.18	40°02'47.487"N	104°54'30.437"W	1.14	
8645.00	90.800	3.390	7787.80	205.11	205.20	46.38	40°02'48.326"N	104°54'30.371"W	0.98	
8730.00	90.700	2.810	7786.68	289.97	290.06	50.97	40°02'49.164"N	104°54'30.312"W	0.69	
8816.00	91.690	5.060	7784.89	375.73	375.84	56.87	40°02'50.012"N	104°54'30.236"W	2.86	
8901.00	89.930	4.110	7783.69	460.43	460.55	63.67	40°02'50.849"N	104°54'30.148"W	2.35	
8986.00	89.660	4.750	7783.99	545.17	545.30	70.23	40°02'51.687"N	104°54'30.064"W	0.82	
9071.00	89.530	3.480	7784.59	629.93	630.07	76.33	40°02'52.525"N	104°54'29.985"W	1.50	
9156.00	90.520	2.660	7784.56	714.80	714.95	80.88	40°02'53.363"N	104°54'29.927"W	1.51	
9242.00	90.640	2.070	7783.69	800.71	800.87	84.43	40°02'54.212"N	104°54'29.881"W	0.70	
9327.00	90.730	1.060	7782.67	885.67	885.83	86.75	40°02'55.052"N	104°54'29.851"W	1.19	
9412.00	90.520	359.570	7781.74	970.66	970.82	87.22	40°02'55.892"N	104°54'29.845"W	1.77	
9497.00	89.780	358.590	7781.52	1055.65	1055.81	85.86	40°02'56.732"N	104°54'29.863"W	1.44	
9582.00	89.600	359.360	7781.98	1140.64	1140.79	84.34	40°02'57.572"N	104°54'29.883"W	0.93	
9667.00	90.120	359.970	7782.19	1225.64	1225.79	83.84	40°02'58.412"N	104°54'29.889"W	0.94	
9752.00	89.530	359.740	7782.45	1310.64	1310.79	83.62	40°02'59.252"N	104°54'29.892"W	0.74	
9837.00	89.720	359.260	7783.00	1395.63	1395.79	82.88	40°03'00.091"N	104°54'29.901"W	0.61	
9923.00	90.640	359.320	7782.73	1481.63	1481.78	81.82	40°03'00.941"N	104°54'29.915"W	1.07	
10008.00	90.330	359.160	7782.01	1566.62	1566.77	80.69	40°03'01.781"N	104°54'29.929"W	0.41	
10093.00	89.690	358.050	7782.00	1651.59	1651.74	78.62	40°03'02.621"N	104°54'29.956"W	1.51	
10178.00	90.980	359.040	7781.50	1736.57	1736.71	76.46	40°03'03.461"N	104°54'29.984"W	1.91	
10263.00	90.520	358.580	7780.39	1821.54	1821.68	74.70	40°03'04.300"N	104°54'30.006"W	0.77	
10349.00	90.240	358.230	7779.82	1907.51	1907.65	72.30	40°03'05.150"N	104°54'30.037"W	0.52	
10434.00	90.270	359.210	7779.44	1992.49	1992.62	70.40	40°03'05.990"N	104°54'30.062"W	1.15	
10519.00	89.780	359.770	7779.40	2077.49	2077.62	69.65	40°03'06.830"N	104°54'30.071"W	0.88	
10605.00	89.870	359.920	7779.67	2163.49	2163.62	69.41	40°03'07.679"N	104°54'30.074"W	0.20	
10690.00	89.720	0.470	7779.97	2248.49	2248.62	69.70	40°03'08.519"N	104°54'30.071"W	0.67	
10775.00	89.720	0.960	7780.39	2333.48	2333.61	70.76	40°03'09.359"N	104°54'30.057"W	0.58	
10860.00	90.400	0.510	7780.30	2418.47	2418.60	71.85	40°03'10.199"N	104°54'30.043"W	0.96	
10946.00	90.030	359.460	7779.97	2504.46	2504.60	71.83	40°03'11.049"N	104°54'30.043"W	1.29	
11031.00	89.590	359.970	7780.26	2589.46	2589.60	71.41	40°03'11.889"N	104°54'30.049"W	0.79	



Actual Wellpath Report

UNDERHILL 27C-17HZ AWP

Page 5 of 7



REFERENCE WELLPATH IDENTIFICATION

Operator	KERR-MCGEE OIL & GAS ONSHORE LP	Slot	SLOT#07 UNDERHILL 27C-17HZ (878' FSL & 992' FEL, SEC.17)
Area	COLORADO	Well	UNDERHILL 27C-17HZ
Field	WELD COUNTY (KERR MCGEE)	Wellbore	UNDERHILL 27C-17HZ AWB
Facility	SEC.17-T1N-R67W		

WELLPATH DATA (151 stations)

MD [ft]	Inclination [°]	Azimuth [°]	TVD [ft]	Vert Sect [ft]	North [ft]	East [ft]	Latitude	Longitude	DLS [°/100ft]	Comments
11116.00	89.230	0.140	7781.13	2674.46	2674.59	71.49	40°03'12.729"N	104°54'30.048"W	0.47	
11201.00	90.000	358.990	7781.70	2759.45	2759.59	70.85	40°03'13.569"N	104°54'30.056"W	1.63	
11286.00	89.600	359.840	7782.00	2844.45	2844.58	69.98	40°03'14.409"N	104°54'30.067"W	1.11	
11371.00	90.520	358.480	7781.91	2929.44	2929.57	68.73	40°03'15.249"N	104°54'30.083"W	1.93	
11456.00	89.810	358.410	7781.67	3014.41	3014.54	66.42	40°03'16.088"N	104°54'30.113"W	0.84	
11541.00	90.150	357.750	7781.70	3099.37	3099.49	63.58	40°03'16.928"N	104°54'30.149"W	0.87	
11626.00	90.980	358.240	7780.86	3184.32	3184.43	60.60	40°03'17.767"N	104°54'30.188"W	1.13	
11711.00	90.580	358.350	7779.70	3269.27	3269.39	58.07	40°03'18.607"N	104°54'30.220"W	0.49	
11796.00	90.460	358.050	7778.93	3354.23	3354.34	55.40	40°03'19.446"N	104°54'30.254"W	0.38	
11881.00	90.150	358.130	7778.48	3439.19	3439.29	52.57	40°03'20.286"N	104°54'30.291"W	0.38	
11966.00	89.590	357.720	7778.67	3524.14	3524.24	49.49	40°03'21.125"N	104°54'30.331"W	0.82	
12051.00	89.660	356.610	7779.23	3609.04	3609.13	45.29	40°03'21.964"N	104°54'30.385"W	1.31	
12136.00	89.130	356.570	7780.12	3693.89	3693.97	40.23	40°03'22.803"N	104°54'30.450"W	0.63	
12221.00	89.130	355.650	7781.41	3778.70	3778.77	34.47	40°03'23.641"N	104°54'30.524"W	1.08	
12305.00	89.230	356.320	7782.62	3862.49	3862.55	28.59	40°03'24.469"N	104°54'30.599"W	0.81	LAST BHI MWD+IFR SURVEY
12362.00	89.230	356.320	7783.38	3919.38	3919.43	24.93	40°03'25.031"N	104°54'30.646"W	0.00	PROJECTION TO BIT

HOLE & CASING SECTIONS - Ref Wellbore: UNDERHILL 27C-17HZ AWB Ref Wellpath: UNDERHILL 27C-17HZ AWP

String/Diameter	Start MD [ft]	End MD [ft]	Interval [ft]	Start TVD [ft]	End TVD [ft]	Start N/S [ft]	Start E/W [ft]	End N/S [ft]	End E/W [ft]
13.5in Open Hole	16.00	938.00	922.00	16.00	937.92	0.00	0.00	9.98	1.18
9.625in Casing Surface	16.00	938.00	922.00	16.00	937.92	0.00	0.00	9.98	1.18
8.75in Open Hole	938.00	8170.00	7232.00	937.92	7782.71	9.98	1.18	-269.24	25.30
7in Casing Intermediate	16.00	8162.00	8146.00	16.00	7782.33	0.00	0.00	-277.23	25.03
6.125in Open Hole	8170.00	12362.00	4192.00	7782.71	7783.38	-269.24	25.30	3919.43	24.93



Actual Wellpath Report

UNDERHILL 27C-17HZ AWP

Page 6 of 7



REFERENCE WELLPATH IDENTIFICATION				
Operator	KERR-MCGEE OIL & GAS ONSHORE LP	Slot	SLOT#07 UNDERHILL 27C-17HZ (878' FSL & 992' FEL, SEC.17)	
Area	COLORADO	Well	UNDERHILL 27C-17HZ	
Field	WELD COUNTY (KERR MCGEE)	Wellbore	UNDERHILL 27C-17HZ AWB	
Facility	SEC.17-T1N-R67W			

TARGETS									
Name	MD [ft]	TVD [ft]	North [ft]	East [ft]	Grid East [US ft]	Grid North [US ft]	Latitude	Longitude	Shape
UNDERHILL 15-17 PAD SECTION 17 LINES		5119.00	-26.18	-528.33	3165040.71	1260196.51	40°02'46.039"N	104°54'37.760"W	polygon
UNDERHILL 27C-17HZ LAND BOX		5119.00	-26.18	-528.33	3165040.71	1260196.51	40°02'46.039"N	104°54'37.760"W	polygon
UNDERHILL 27C-17HZ BHL ON PLAT (460' FNL & 931' FEL) REV-1		7770.00	3946.07	52.33	3165594.85	1264172.39	40°03'25.294"N	104°54'30.294"W	point
UNDERHILL 27C-17HZ BHL ON PLAT (460' FNL & 931' FEL) REV-2		7779.00	3946.07	52.33	3165594.85	1264172.39	40°03'25.294"N	104°54'30.294"W	point

WELLPATH COMPOSITION - Ref Wellbore: UNDERHILL 27C-17HZ AWB Ref Wellpath: UNDERHILL 27C-17HZ AWP				
Start MD [ft]	End MD [ft]	Positional Uncertainty Model	Log Name/Comment	Wellbore
16.00	866.00	Generic gyro - continuous (Standard)	MS ENERGY SERVICES GYRO SURVEY <116-866>	UNDERHILL 27C-17HZ AWB
866.00	8114.00	NaviTrak (MAGCORR,IFR)	BHI NAVITRAK MWD+IFR 8 3/4" <994-8114>	UNDERHILL 27C-17HZ AWB
8114.00	12305.00	OnTrak (MAGCORR,IFR)	BHI ONTRAK MWD+IFR 6 1/8" <8219-12305>	UNDERHILL 27C-17HZ AWB
12305.00	12362.00	Blind Drilling (std)	Projection to bit	UNDERHILL 27C-17HZ AWB



Actual Wellpath Report

UNDERHILL 27C-17HZ AWP

Page 7 of 7



REFERENCE WELLPATH IDENTIFICATION

Operator	KERR-MCGEE OIL & GAS ONSHORE LP	Slot	SLOT#07 UNDERHILL 27C-17HZ (878' FSL & 992' FEL, SEC.17)
Area	COLORADO	Well	UNDERHILL 27C-17HZ
Field	WELD COUNTY (KERR MCGEE)	Wellbore	UNDERHILL 27C-17HZ AWB
Facility	SEC.17-T1N-R67W		

WELLPATH COMMENTS

MD [ft]	Inclination [°]	Azimuth [°]	TVD [ft]	Comment
16.00	0.000	328.580	16.00	TIE-ON
116.00	0.230	328.580	116.00	BEGIN GYRO SURVEYS
866.00	1.460	23.830	865.95	TIE ONTO GYRO SURVEYS
994.00	1.520	35.370	993.90	BEGIN BHI MWD+IFR SURVEYS
8162.00	87.168	1.973	7782.33	7" CASING POINT
12305.00	89.230	356.320	7782.62	LAST BHI MWD+IFR SURVEY
12362.00	89.230	356.320	7783.38	PROJECTION TO BIT