

**5D Plan Report****ANADARKO**

**Field Name:** *WATTENBURG\_NAD83*  
**Site Name:** *GEE 15C-25HZ PAD*  
**Well Name:** *GEE 15N-25HZ*  
**Plan:** *PLAN 1*





Weatherford®

### Plan Data for GEE 15N-25HZ

Field: WATTENBURG\_NAD83

Map Unit: USFT Vertical Reference Datum (VRD): Mean Sea Level  
Projected Coordinate System: NAD83 / Colorado North (ftUS)

Site: GEE 15C-25HZ PAD

Unit: USFeet TVD Reference:

Company Name: ANADARKO

Position: Northing: 1290361.43USft Latitude: 40.128524°

Easting: 3185826.54USft Longitude: -104.835439°

North Reference: True Grid Convergence: 0.43°

Elevation Above VRD: 4859.00USft

Slot: GEE 15N-25HZ

Position:

Offset is from Site centre

+N/-S: 0.00USft Northing: 1290361.43USft Latitude: 40.128524°

+E/-W: -0.00USft Easting: 3185826.54USft Longitude: -104.835439°

Elevation Above VRD: 4859.00USft

Well: GEE 15N-25HZ

Type: Main-Well

File Number:

Vertical Section: Position offset of origin from Slot centre:

+N/-S: -0.00USft Azimuth: 180.08°

+E/-W: 0.00USft

Magnetic Parameters:

Model: Field Strength: Declination: Dip: Date:

BGGM 52735(nT) 8.63° 66.74° 2013-07-08

### Plan Point Information:

DogLeg Severity Unit: °/100.00ft

Position offsets from Slot centre

MD	Inc	Az	TVD	+N/-S	+E/-W	VSec	DLS	Toolface	Build	Turn
(USft)	(°)	(°)	(USft)	(USft)	(USft)	(USft)	(DLSU)	(°)	(DLSU)	(DLSU)
0.00	0.00	0.00	0.00	0.00	0.00	0.00	0.00	0.0	0.00	0.00
2600.00	0.00	0.00	2600.00	0.00	0.00	0.00	0.00	0.0	0.00	0.00
3410.17	16.20	324.00	3399.41	92.06	-66.90	-91.96	2.00	324.0	2.00	0.00
5916.97	16.20	324.00	5806.64	657.95	-478.11	-657.28	0.00	0.0	0.00	0.00
6727.14	0.00	0.00	6606.05	750.00	-545.00	-749.24	2.00	180.0	-2.00	0.00
7623.60	89.65	180.08	7179.00	180.58	-545.78	-179.82	10.00	180.1	10.00	0.00
17512.04	89.65	180.08	7240.02	-9707.65	-559.19	9708.43	0.00	0.0	0.00	0.00

### Casing Point Information:

Name	MD	TVD
	(USft)	(USft)
9 5/8 in	968.00	968.00
7 in	7623.60	7179.00

### LINER - 6627.14' MD

KOP - 6727.14' MD

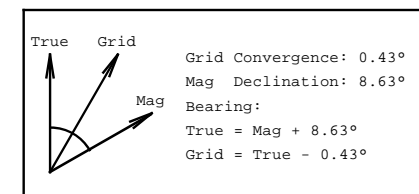
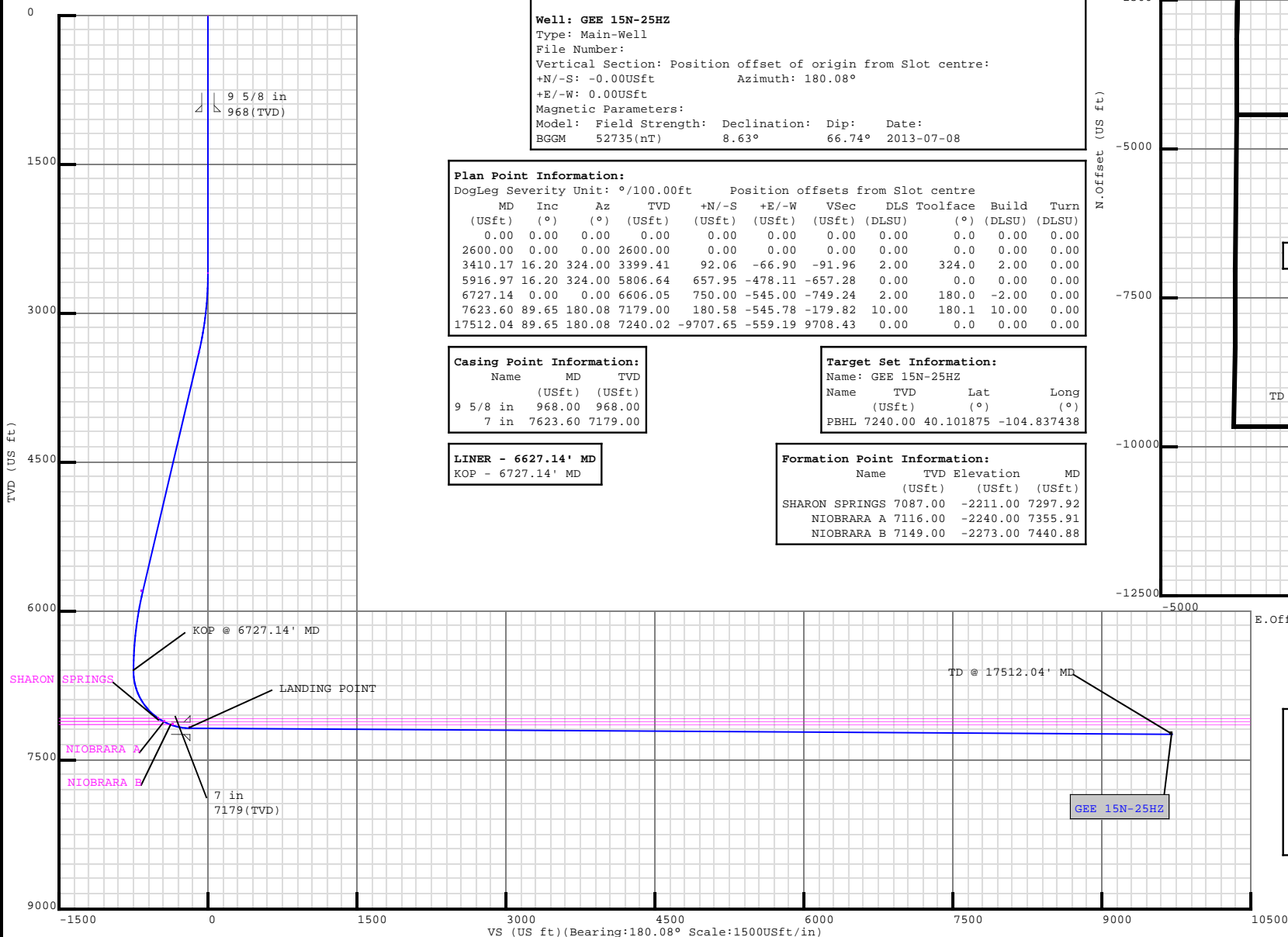
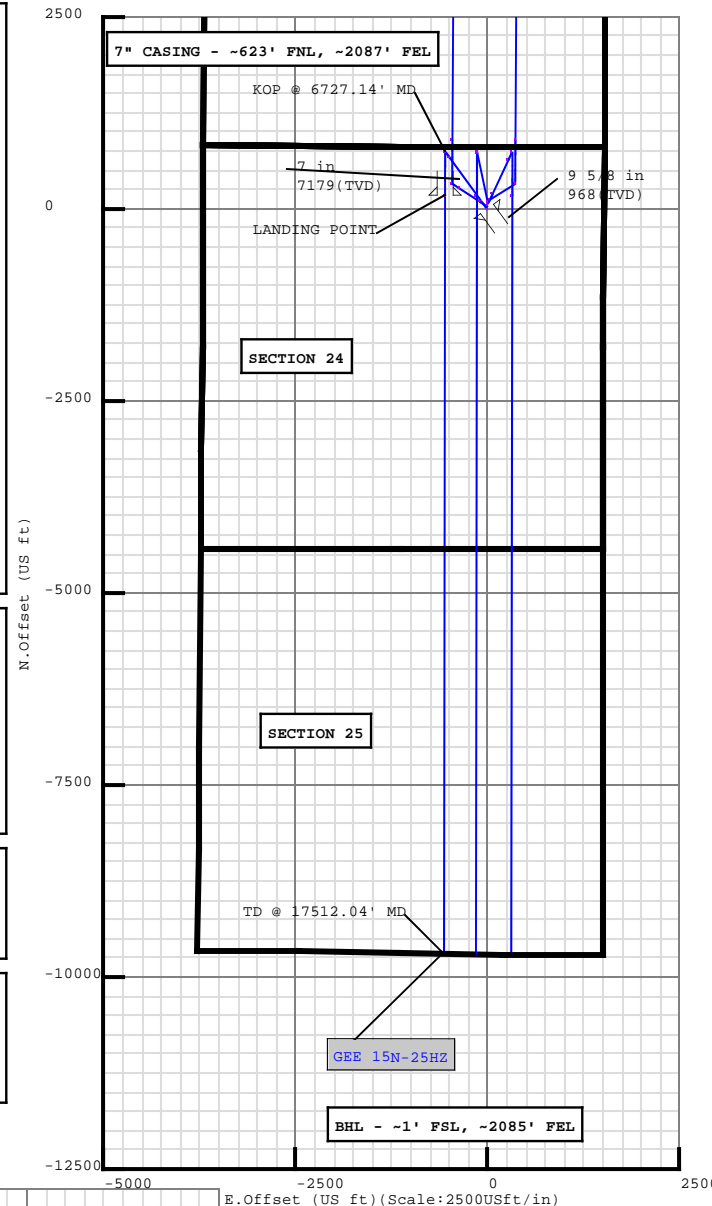
### Target Set Information:

Name: GEE 15N-25HZ

Name	TVD	Lat	Long
	(USft)	(°)	(°)
PBHL	7240.00	40.101875	-104.837438

### Formation Point Information:

Name	TVD Elevation	MD
	(USft)	(USft)
SHARON SPRINGS	7087.00	-2211.00
NIOBRARA A	7116.00	-2240.00
NIOBRARA B	7149.00	-2273.00



## Plan Surveys for the GEE 15N-25HZ

<b>Site Name</b> GEE 15C-25HZ PAD	<b>Units :</b> US ft	<b>North Reference :</b> True	<b>Convergence Angle :</b> 0.43
	<b>Position</b>	<b>Northing :</b> 1290361.43 US ft	<b>Latitude :</b> 40.128524
		<b>Easting :</b> 3185826.54 US ft	<b>Longitude :</b> -104.835439
	<b>Elevation above:</b> 4859.00 US ft <b>Comment :</b>		
<b>Slot Name</b> GEE 15N-25HZ	<b>Position (Offsets relative to Site Centre)</b>		
	<b>+N / -S :</b> 0.00 US ft	<b>Northing :</b> 1290361.43 US ft	<b>Latitude :</b> 40.128524
	<b>+E / -W :</b> -0.00 US ft	<b>Easting :</b> 3185826.54 US ft	<b>Longitude :</b> -104.835439
	<b>Slot TVD Reference :</b> Ground Elevation <b>Elevation above :</b> 4859.00 US ft <b>Comment :</b>		
<b>Well Name</b> GEE 15N-25HZ	<b>Type :</b> Main well	<b>UWI :</b>	<b>Plan :</b> PLAN 1
	<b>Rig Height</b> <b>Drill Floor :</b> 17.00 US ft	<b>Comment :</b>	
	<b>Relative to :</b> 4876.00 US ft		
	<b>Closure Distance :</b> 9723.75 US ft	<b>Closure Azimuth :</b> 183.297°	
	<b>Vertical Section (Position of Origin Relative to Slot )</b>		
	<b>+N / -S :</b> -0.00 US ft	<b>+E / -W :</b> 0.00 US ft	<b>Az :</b> 180.08°
	<b>Magnetic Parameters</b>		
	<b>Model :</b> BGGM	<b>Field Strength :</b> 52735.3nT	<b>Dec :</b> 8.63°
			<b>Dip :</b> 66.74°
			<b>Date :</b> 08/Jul/2013

**Target Set****Name :** GEE 15N-25HZ**Number of Targets :** 1**Comment :**

TargetName:	Position (Relative to centre)				
PBHL	+N / -S : -9707.66US ft		Northing : 1280649.85 US ft		
	+E / -W : -559.19 US ft		Easting : 3185340.12US ft		
Shape:	Latitude : 40°6'6.750000"				
Cuboid	Longitude : -104°50'14.776800"				
	TVD (Drill Floor) : 7240.00 US ft				
	Orientation	Azimuth : 0.00°		Inclination : 0.00°	
	Dimensions	Length : 20.00 US ft		Breadth : 20.00 US ft	
				Height : 20.00 US ft	

Casing Points (Relative to centre, TVD relative to Drill Floor )									
Name	MD (US ft)	Inc (°)	Az (°)	TVD (US ft)	N.Offset (US ft)	E.Offset (US ft)	Latitude (°)	Longitude (°)	
9 5/8 in	968.00	0.00	0.00	968.00	0.00	0.00	40.128524	-104.835439	
7 in	7623.60	89.65	180.08	7179.00	180.59	-545.78	40.129020	-104.837391	

**Well path created using minimum curvature**

Salient Points (Relative to centre, TVD relative to Drill Floor )									
MD (US ft)	Inc (°)	Az (°)	TVD (US ft)	N.Offset (US ft)	E.Offset (US ft)	DLS (°/100 US ft)	T.Face (°)	VS (US ft)	Comment
0.00	0.00	0.00	0.00	0.00	0.00	0.00	0.00	-0.00	
968.00	0.00	0.00	968.00	0.00	0.00	0.00	0.00	-0.00	9 5/8 in
2600.00	0.00	0.00	2600.00	0.00	0.00	0.00	0.00	-0.00	
3410.17	16.20	324.00	3399.41	92.06	-66.90	2.00	324.00	-91.97	
5916.97	16.20	324.00	5806.64	657.95	-478.11	0.00	0.00	-657.28	
6727.14	0.00	0.00	6606.05	750.00	-545.00	2.00	180.00	-749.25	KOP @ 6727.14' MD
7297.92	57.08	180.08	7087.00	488.45	-545.36	10.00	180.08	-487.69	SHARON SPRINGS :
7355.91	62.88	180.08	7116.00	438.26	-545.43	10.00	0.00	-437.50	NIOBRARA A :
7440.88	71.37	180.08	7149.00	360.04	-545.53	10.00	0.00	-359.28	NIOBRARA B :
7623.60	89.65	180.08	7179.00	180.59	-545.78	10.00	0.00	-179.83	7 in
7623.60	89.65	180.08	7179.00	180.58	-545.78	0.00	0.00	-179.82	LANDING POINT
17512.04	89.65	180.08	7240.02	-9707.65	-559.19	0.00	0.00	9708.42	TD @ 17512.04' MD

## 5D Plan Report

Interpolated Points (Relative to centre, TVD relative to Drill Floor )									
MD (US ft)	Inc (°)	Az (°)	TVD (US ft)	N.Offset (US ft)	E.Offset (US ft)	DLS (°/100 US ft)	T.Face (°)	VS (US ft)	Comment
0.00	0.00	0.00	0.00	0.00	0.00	0.00	0.00	-0.00	9 5/8 in
100.00	0.00	0.00	100.00	0.00	0.00	0.00	0.00	-0.00	
200.00	0.00	0.00	200.00	0.00	0.00	0.00	0.00	-0.00	
300.00	0.00	0.00	300.00	0.00	0.00	0.00	0.00	-0.00	
400.00	0.00	0.00	400.00	0.00	0.00	0.00	0.00	-0.00	
500.00	0.00	0.00	500.00	0.00	0.00	0.00	0.00	-0.00	
600.00	0.00	0.00	600.00	0.00	0.00	0.00	0.00	-0.00	
700.00	0.00	0.00	700.00	0.00	0.00	0.00	0.00	-0.00	
800.00	0.00	0.00	800.00	0.00	0.00	0.00	0.00	-0.00	
900.00	0.00	0.00	900.00	0.00	0.00	0.00	0.00	-0.00	
968.00	0.00	0.00	968.00	0.00	0.00	0.00	0.00	-0.00	
1000.00	0.00	0.00	1000.00	0.00	0.00	0.00	0.00	-0.00	
1100.00	0.00	0.00	1100.00	0.00	0.00	0.00	0.00	-0.00	
1200.00	0.00	0.00	1200.00	0.00	0.00	0.00	0.00	-0.00	
1300.00	0.00	0.00	1300.00	0.00	0.00	0.00	0.00	-0.00	
1400.00	0.00	0.00	1400.00	0.00	0.00	0.00	0.00	-0.00	
1500.00	0.00	0.00	1500.00	0.00	0.00	0.00	0.00	-0.00	
1600.00	0.00	0.00	1600.00	0.00	0.00	0.00	0.00	-0.00	
1700.00	0.00	0.00	1700.00	0.00	0.00	0.00	0.00	-0.00	
1800.00	0.00	0.00	1800.00	0.00	0.00	0.00	0.00	-0.00	
1900.00	0.00	0.00	1900.00	0.00	0.00	0.00	0.00	-0.00	
2000.00	0.00	0.00	2000.00	0.00	0.00	0.00	0.00	-0.00	
2100.00	0.00	0.00	2100.00	0.00	0.00	0.00	0.00	-0.00	
2200.00	0.00	0.00	2200.00	0.00	0.00	0.00	0.00	-0.00	
2300.00	0.00	0.00	2300.00	0.00	0.00	0.00	0.00	-0.00	
2400.00	0.00	0.00	2400.00	0.00	0.00	0.00	0.00	-0.00	
2500.00	0.00	0.00	2500.00	0.00	0.00	0.00	0.00	-0.00	
2600.00	0.00	0.00	2600.00	0.00	0.00	0.00	0.00	-0.00	
2700.00	2.00	324.00	2699.98	1.41	-1.03	2.00	324.00	-1.41	
2800.00	4.00	324.00	2799.84	5.65	-4.10	2.00	0.00	-5.64	
2900.00	6.00	324.00	2899.45	12.70	-9.23	2.00	0.00	-12.69	
3000.00	8.00	324.00	2998.70	22.55	-16.39	2.00	0.00	-22.53	
3100.00	10.00	324.00	3097.47	35.21	-25.58	2.00	0.00	-35.18	
3200.00	12.00	324.00	3195.62	50.64	-36.80	2.00	0.00	-50.59	
3300.00	14.00	324.00	3293.06	68.84	-50.02	2.00	0.00	-68.77	
3400.00	16.00	324.00	3389.64	89.78	-65.24	2.00	0.00	-89.69	
3410.17	16.20	324.00	3399.41	92.06	-66.90	2.00	0.00	-91.97	
3500.00	16.20	324.00	3485.68	112.34	-81.63	0.00	0.00	-112.23	
3600.00	16.20	324.00	3581.70	134.91	-98.04	0.00	0.00	-134.78	
3700.00	16.20	324.00	3677.73	157.49	-114.44	0.00	0.00	-157.33	
3800.00	16.20	324.00	3773.76	180.06	-130.84	0.00	0.00	-179.88	

## 5D Plan Report

Interpolated Points (Relative to centre, TVD relative to Drill Floor )									
MD (US ft)	Inc (°)	Az (°)	TVD (US ft)	N.Offset (US ft)	E.Offset (US ft)	DLS (°/100 US ft)	T.Face (°)	VS (US ft)	Comment
3900.00	16.20	324.00	3869.79	202.63	-147.25	0.00	0.00	-202.43	
4000.00	16.20	324.00	3965.81	225.21	-163.65	0.00	0.00	-224.98	
4100.00	16.20	324.00	4061.84	247.78	-180.05	0.00	0.00	-247.53	
4200.00	16.20	324.00	4157.87	270.36	-196.46	0.00	0.00	-270.08	
4300.00	16.20	324.00	4253.90	292.93	-212.86	0.00	0.00	-292.63	
4400.00	16.20	324.00	4349.93	315.50	-229.27	0.00	0.00	-315.19	
4500.00	16.20	324.00	4445.95	338.08	-245.67	0.00	0.00	-337.74	
4600.00	16.20	324.00	4541.98	360.65	-262.07	0.00	0.00	-360.29	
4700.00	16.20	324.00	4638.01	383.23	-278.48	0.00	0.00	-382.84	
4800.00	16.20	324.00	4734.04	405.80	-294.88	0.00	0.00	-405.39	
4900.00	16.20	324.00	4830.06	428.37	-311.29	0.00	0.00	-427.94	
5000.00	16.20	324.00	4926.09	450.95	-327.69	0.00	0.00	-450.49	
5100.00	16.20	324.00	5022.12	473.52	-344.09	0.00	0.00	-473.04	
5200.00	16.20	324.00	5118.15	496.10	-360.50	0.00	0.00	-495.60	
5300.00	16.20	324.00	5214.17	518.67	-376.90	0.00	0.00	-518.15	
5400.00	16.20	324.00	5310.20	541.24	-393.30	0.00	0.00	-540.70	
5500.00	16.20	324.00	5406.23	563.82	-409.71	0.00	0.00	-563.25	
5600.00	16.20	324.00	5502.26	586.39	-426.11	0.00	0.00	-585.80	
5700.00	16.20	324.00	5598.29	608.97	-442.52	0.00	0.00	-608.35	
5800.00	16.20	324.00	5694.31	631.54	-458.92	0.00	0.00	-630.90	
5900.00	16.20	324.00	5790.34	654.11	-475.32	0.00	0.00	-653.45	
5916.97	16.20	324.00	5806.64	657.95	-478.11	0.00	0.00	-657.28	
6000.00	14.54	324.00	5886.69	675.75	-491.05	2.00	180.00	-675.07	
6100.00	12.54	324.00	5983.91	694.69	-504.81	2.00	180.00	-693.99	
6200.00	10.54	324.00	6081.88	710.88	-516.57	2.00	180.00	-710.16	
6300.00	8.54	324.00	6180.49	724.29	-526.32	2.00	180.00	-723.56	
6400.00	6.54	324.00	6279.62	734.91	-534.03	2.00	180.00	-734.17	
6500.00	4.54	324.00	6379.15	742.72	-539.71	2.00	180.00	-741.97	
6600.00	2.54	324.00	6478.95	747.72	-543.34	2.00	180.00	-746.97	
6700.00	0.54	324.00	6578.91	749.90	-544.93	2.00	180.00	-749.14	
6727.14	0.00	0.00	6606.05	750.00	-545.00	2.00	180.00	-749.25	KOP @ 6727.14' MD
6800.00	7.29	180.08	6678.71	745.38	-545.01	10.00	180.08	-744.62	
6900.00	17.29	180.08	6776.30	724.13	-545.04	10.00	0.00	-723.37	
7000.00	27.29	180.08	6868.71	686.25	-545.09	10.00	0.00	-685.49	
7100.00	37.29	180.08	6953.15	632.90	-545.16	10.00	0.00	-632.15	
7200.00	47.29	180.08	7027.03	565.71	-545.25	10.00	0.00	-564.95	
7297.92	57.08	180.08	7087.00	488.45	-545.36	10.00	0.00	-487.69	SHARON SPRINGS :
7300.00	57.29	180.08	7088.13	486.70	-545.36	10.00	0.00	-485.94	
7355.91	62.88	180.08	7116.00	438.26	-545.43	10.00	0.00	-437.50	NIOBRARA A :
7400.00	67.29	180.08	7134.57	398.28	-545.48	10.00	0.00	-397.52	
7440.88	71.37	180.08	7149.00	360.04	-545.53	10.00	0.00	-359.28	NIOBRARA B :

## 5D Plan Report

Interpolated Points (Relative to centre, TVD relative to Drill Floor )									
MD (US ft)	Inc (°)	Az (°)	TVD (US ft)	N.Offset (US ft)	E.Offset (US ft)	DLS (°/100 US ft)	T.Face (°)	VS (US ft)	Comment
7500.00	77.29	180.08	7164.96	303.15	-545.61	10.00	0.00	-302.39	7 in LANDING POINT
7600.00	87.29	180.08	7178.37	204.18	-545.74	10.00	0.00	-203.42	
7623.60	89.65	180.08	7179.00	180.59	-545.78	10.00	0.00	-179.83	
7623.60	89.65	180.08	7179.00	180.58	-545.78	0.00	0.00	-179.82	
7700.00	89.65	180.08	7179.47	104.19	-545.88	0.00	0.00	-103.43	
7800.00	89.65	180.08	7180.09	4.19	-546.01	0.00	0.00	-3.43	
7900.00	89.65	180.08	7180.70	-95.81	-546.15	0.00	0.00	96.57	
8000.00	89.65	180.08	7181.32	-195.81	-546.29	0.00	0.00	196.56	
8100.00	89.65	180.08	7181.94	-295.80	-546.42	0.00	0.00	296.56	
8200.00	89.65	180.08	7182.56	-395.80	-546.56	0.00	0.00	396.56	
8300.00	89.65	180.08	7183.17	-495.80	-546.69	0.00	0.00	496.56	
8400.00	89.65	180.08	7183.79	-595.80	-546.83	0.00	0.00	596.56	
8500.00	89.65	180.08	7184.41	-695.80	-546.96	0.00	0.00	696.56	
8600.00	89.65	180.08	7185.02	-795.79	-547.10	0.00	0.00	796.55	
8700.00	89.65	180.08	7185.64	-895.79	-547.24	0.00	0.00	896.55	
8800.00	89.65	180.08	7186.26	-995.79	-547.37	0.00	0.00	996.55	
8900.00	89.65	180.08	7186.87	-1095.79	-547.51	0.00	0.00	1096.55	
9000.00	89.65	180.08	7187.49	-1195.79	-547.64	0.00	0.00	1196.55	
9100.00	89.65	180.08	7188.11	-1295.78	-547.78	0.00	0.00	1296.54	
9200.00	89.65	180.08	7188.73	-1395.78	-547.91	0.00	0.00	1396.54	
9300.00	89.65	180.08	7189.34	-1495.78	-548.05	0.00	0.00	1496.54	
9400.00	89.65	180.08	7189.96	-1595.78	-548.19	0.00	0.00	1596.54	
9500.00	89.65	180.08	7190.58	-1695.78	-548.32	0.00	0.00	1696.54	
9600.00	89.65	180.08	7191.19	-1795.77	-548.46	0.00	0.00	1796.53	
9700.00	89.65	180.08	7191.81	-1895.77	-548.59	0.00	0.00	1896.53	
9800.00	89.65	180.08	7192.43	-1995.77	-548.73	0.00	0.00	1996.53	
9900.00	89.65	180.08	7193.04	-2095.77	-548.86	0.00	0.00	2096.53	
10000.00	89.65	180.08	7193.66	-2195.77	-549.00	0.00	0.00	2196.53	
10100.00	89.65	180.08	7194.28	-2295.76	-549.13	0.00	0.00	2296.52	
10200.00	89.65	180.08	7194.90	-2395.76	-549.27	0.00	0.00	2396.52	
10300.00	89.65	180.08	7195.51	-2495.76	-549.41	0.00	0.00	2496.52	
10400.00	89.65	180.08	7196.13	-2595.76	-549.54	0.00	0.00	2596.52	
10500.00	89.65	180.08	7196.75	-2695.76	-549.68	0.00	0.00	2696.52	
10600.00	89.65	180.08	7197.36	-2795.75	-549.81	0.00	0.00	2796.52	
10700.00	89.65	180.08	7197.98	-2895.75	-549.95	0.00	0.00	2896.51	
10800.00	89.65	180.08	7198.60	-2995.75	-550.08	0.00	0.00	2996.51	
10900.00	89.65	180.08	7199.22	-3095.75	-550.22	0.00	0.00	3096.51	
11000.00	89.65	180.08	7199.83	-3195.75	-550.36	0.00	0.00	3196.51	
11100.00	89.65	180.08	7200.45	-3295.74	-550.49	0.00	0.00	3296.51	
11200.00	89.65	180.08	7201.07	-3395.74	-550.63	0.00	0.00	3396.50	
11300.00	89.65	180.08	7201.68	-3495.74	-550.76	0.00	0.00	3496.50	

## 5D Plan Report

Interpolated Points (Relative to centre, TVD relative to Drill Floor )									
MD (US ft)	Inc (°)	Az (°)	TVD (US ft)	N.Offset (US ft)	E.Offset (US ft)	DLS (°/100 US ft)	T.Face (°)	VS (US ft)	Comment
11400.00	89.65	180.08	7202.30	-3595.74	-550.90	0.00	0.00	3596.50	
11500.00	89.65	180.08	7202.92	-3695.74	-551.03	0.00	0.00	3696.50	
11600.00	89.65	180.08	7203.53	-3795.73	-551.17	0.00	0.00	3796.50	
11700.00	89.65	180.08	7204.15	-3895.73	-551.31	0.00	0.00	3896.49	
11800.00	89.65	180.08	7204.77	-3995.73	-551.44	0.00	0.00	3996.49	
11900.00	89.65	180.08	7205.39	-4095.73	-551.58	0.00	0.00	4096.49	
12000.00	89.65	180.08	7206.00	-4195.73	-551.71	0.00	0.00	4196.49	
12100.00	89.65	180.08	7206.62	-4295.72	-551.85	0.00	0.00	4296.49	
12200.00	89.65	180.08	7207.24	-4395.72	-551.98	0.00	0.00	4396.49	
12300.00	89.65	180.08	7207.85	-4495.72	-552.12	0.00	0.00	4496.48	
12400.00	89.65	180.08	7208.47	-4595.72	-552.25	0.00	0.00	4596.48	
12500.00	89.65	180.08	7209.09	-4695.72	-552.39	0.00	0.00	4696.48	
12600.00	89.65	180.08	7209.71	-4795.71	-552.53	0.00	0.00	4796.48	
12700.00	89.65	180.08	7210.32	-4895.71	-552.66	0.00	0.00	4896.48	
12800.00	89.65	180.08	7210.94	-4995.71	-552.80	0.00	0.00	4996.47	
12900.00	89.65	180.08	7211.56	-5095.71	-552.93	0.00	0.00	5096.47	
13000.00	89.65	180.08	7212.17	-5195.71	-553.07	0.00	0.00	5196.47	
13100.00	89.65	180.08	7212.79	-5295.70	-553.20	0.00	0.00	5296.47	
13200.00	89.65	180.08	7213.41	-5395.70	-553.34	0.00	0.00	5396.47	
13300.00	89.65	180.08	7214.02	-5495.70	-553.48	0.00	0.00	5496.46	
13400.00	89.65	180.08	7214.64	-5595.70	-553.61	0.00	0.00	5596.46	
13500.00	89.65	180.08	7215.26	-5695.70	-553.75	0.00	0.00	5696.46	
13600.00	89.65	180.08	7215.88	-5795.69	-553.88	0.00	0.00	5796.46	
13700.00	89.65	180.08	7216.49	-5895.69	-554.02	0.00	0.00	5896.46	
13800.00	89.65	180.08	7217.11	-5995.69	-554.15	0.00	0.00	5996.45	
13900.00	89.65	180.08	7217.73	-6095.69	-554.29	0.00	0.00	6096.45	
14000.00	89.65	180.08	7218.34	-6195.69	-554.43	0.00	0.00	6196.45	
14100.00	89.65	180.08	7218.96	-6295.68	-554.56	0.00	0.00	6296.45	
14200.00	89.65	180.08	7219.58	-6395.68	-554.70	0.00	0.00	6396.45	
14300.00	89.65	180.08	7220.20	-6495.68	-554.83	0.00	0.00	6496.45	
14400.00	89.65	180.08	7220.81	-6595.68	-554.97	0.00	0.00	6596.44	
14500.00	89.65	180.08	7221.43	-6695.68	-555.10	0.00	0.00	6696.44	
14600.00	89.65	180.08	7222.05	-6795.67	-555.24	0.00	0.00	6796.44	
14700.00	89.65	180.08	7222.66	-6895.67	-555.37	0.00	0.00	6896.44	
14800.00	89.65	180.08	7223.28	-6995.67	-555.51	0.00	0.00	6996.44	
14900.00	89.65	180.08	7223.90	-7095.67	-555.65	0.00	0.00	7096.43	
15000.00	89.65	180.08	7224.51	-7195.67	-555.78	0.00	0.00	7196.43	
15100.00	89.65	180.08	7225.13	-7295.66	-555.92	0.00	0.00	7296.43	
15200.00	89.65	180.08	7225.75	-7395.66	-556.05	0.00	0.00	7396.43	
15300.00	89.65	180.08	7226.37	-7495.66	-556.19	0.00	0.00	7496.43	
15400.00	89.65	180.08	7226.98	-7595.66	-556.32	0.00	0.00	7596.42	



## 5D Plan Report

Interpolated Points (Relative to centre, TVD relative to Drill Floor )									
MD (US ft)	Inc (°)	Az (°)	TVD (US ft)	N.Offset (US ft)	E.Offset (US ft)	DLS (°/100 US ft)	T.Face (°)	VS (US ft)	Comment
15500.00	89.65	180.08	7227.60	-7695.66	-556.46	0.00	0.00	7696.42	
15600.00	89.65	180.08	7228.22	-7795.65	-556.60	0.00	0.00	7796.42	
15700.00	89.65	180.08	7228.83	-7895.65	-556.73	0.00	0.00	7896.42	
15800.00	89.65	180.08	7229.45	-7995.65	-556.87	0.00	0.00	7996.42	
15900.00	89.65	180.08	7230.07	-8095.65	-557.00	0.00	0.00	8096.41	
16000.00	89.65	180.08	7230.69	-8195.65	-557.14	0.00	0.00	8196.41	
16100.00	89.65	180.08	7231.30	-8295.64	-557.27	0.00	0.00	8296.41	
16200.00	89.65	180.08	7231.92	-8395.64	-557.41	0.00	0.00	8396.41	
16300.00	89.65	180.08	7232.54	-8495.64	-557.55	0.00	0.00	8496.41	
16400.00	89.65	180.08	7233.15	-8595.64	-557.68	0.00	0.00	8596.41	
16500.00	89.65	180.08	7233.77	-8695.64	-557.82	0.00	0.00	8696.40	
16600.00	89.65	180.08	7234.39	-8795.63	-557.95	0.00	0.00	8796.40	
16700.00	89.65	180.08	7235.00	-8895.63	-558.09	0.00	0.00	8896.40	
16800.00	89.65	180.08	7235.62	-8995.63	-558.22	0.00	0.00	8996.40	
16900.00	89.65	180.08	7236.24	-9095.63	-558.36	0.00	0.00	9096.40	
17000.00	89.65	180.08	7236.86	-9195.63	-558.49	0.00	0.00	9196.39	
17100.00	89.65	180.08	7237.47	-9295.62	-558.63	0.00	0.00	9296.39	
17200.00	89.65	180.08	7238.09	-9395.62	-558.77	0.00	0.00	9396.39	
17300.00	89.65	180.08	7238.71	-9495.62	-558.90	0.00	0.00	9496.39	
17400.00	89.65	180.08	7239.32	-9595.62	-559.04	0.00	0.00	9596.39	
17500.00	89.65	180.08	7239.94	-9695.62	-559.17	0.00	0.00	9696.38	
17512.04	89.65	180.08	7240.02	-9707.65	-559.19	0.00	0.00	9708.42	TD @ 17512.04' MD

Formation Points (Relative to centre, TVD relative to Drill Floor )			
Name	MD (US ft)	TVD (US ft)	
SHARON SPRINGS	7297.92	7087.00	
NIOBRARA A	7355.91	7116.00	
NIOBRARA B	7440.88	7149.00	