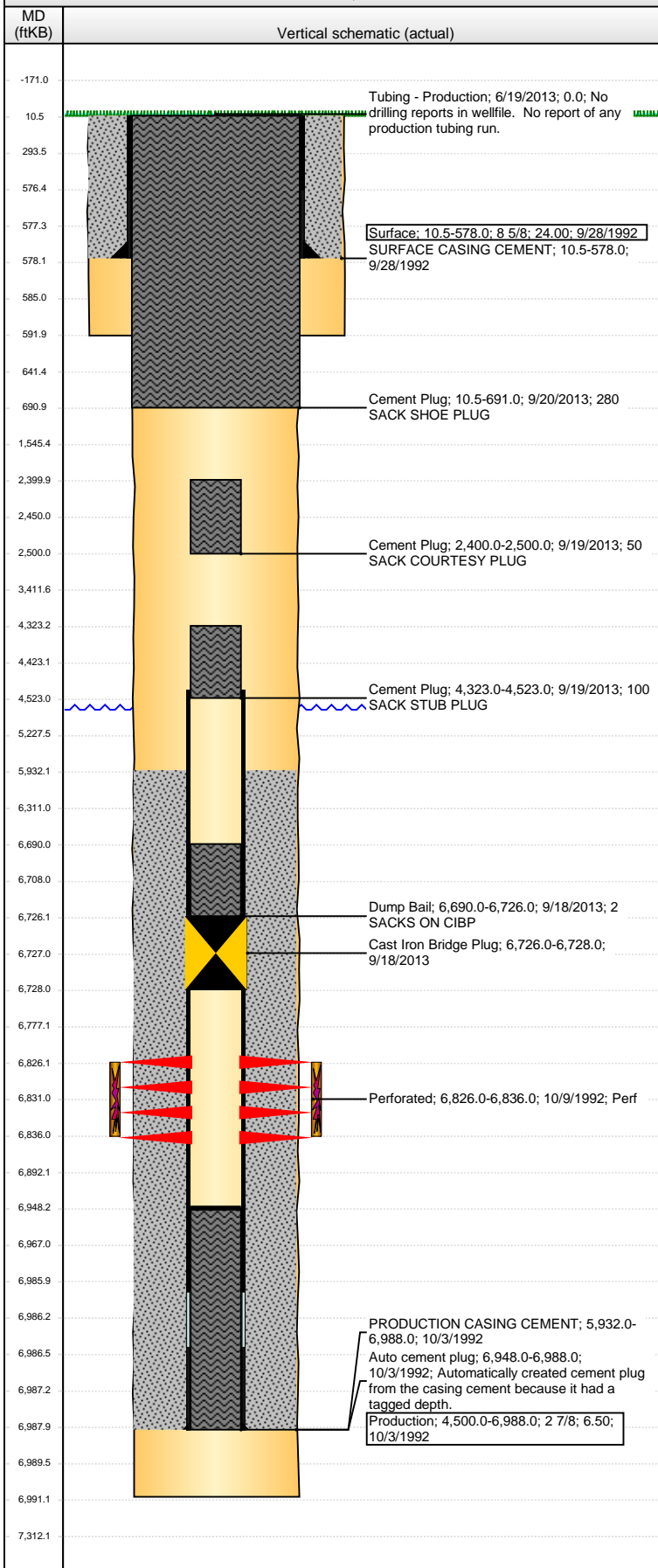


**Well Name: KARCH BLUE D24-11**

VERTICAL - ORIGINAL HOLE, 10/10/2013 11:11:56 AM



Well Header			
API	Business Unit	District	Well Config
05-123-16141	WATTENBERG	15	VERTICAL
Original KB Elevation (ft)	KB - GL / MSL (ftKB)	Spud Date	P & A Date
4,759.50	10.50	9/28/1992	9/19/2013
Comment			
NO PRODUCTION TUBING FOUND IN WELL FILE			
Directions To Well			
Congressional Location			
Quarter 1	Quarter 2	Quarter 3	Quarter 4
		NE	SW
Section	Township	Twnshp N...	Range
24	3	N	64
Rng E/W Dir			
W			
Bottom Hole Location			
North-South Distance (ft)	From N or S Line	East-West Distance (ft)	From E or W Line
Plug Back Total Depths			
Date	Depth (ftKB)	Method	Com
10/7/1992	6,948.0	CASED HOLE LOG	
Wellbore Sections			
Section Des	Size (in)	Act Top (ftKB)	Act Btm (ftKB)
SURFACE	12 1/4	10.5	592.0
PRODUCTION	7 7/8	592.0	6,991.0
Zone Statuses			
Zone Name	Status Date	Status	Job
CODELL	11/4/1992	PR	DRILLING/COMPLETION - ORIGINAL, 9/28/1992 00:00
CODELL	9/19/2013	P&A	ABANDON WELL, 9/18/2013 06:00
Casing Strings			
Surface, 578.0ftKB			
Casing Description	Run Date	OD (in)	Wt/Len (l...)
Surface	9/28/1992	8 5/8	24.00
Grade	Top (ftKB)	MD (ftKB)	
	10.5	578.0	
Production, 6,988.0ftKB			
Casing Description	Run Date	OD (in)	Wt/Len (l...)
Production	10/3/1992	2 7/8	6.50
Grade	Top (ftKB)	MD (ftKB)	
	10.5	6,988.0	
Cement			
Description	Top Depth (ftKB)	Bottom Depth (ftKB)	
SURFACE CASING CEMENT	10.5	578.0	
Production	Top Depth (ftKB)	Bottom Depth (ftKB)	
PRODUCTION CASING CEMENT	5,932.0	6,988.0	
Description	Top Depth (ftKB)	Bottom Depth (ftKB)	
Dump Bail	6,690.0	6,726.0	
Description	Top Depth (ftKB)	Bottom Depth (ftKB)	
Cement Plug	4,323.0	4,523.0	
Description	Top Depth (ftKB)	Bottom Depth (ftKB)	
Cement Plug	2,400.0	2,500.0	
Description	Top Depth (ftKB)	Bottom Depth (ftKB)	
Cement Plug	10.5	691.0	
Tubing Components			
Item Des	OD (in)	Wt (lb/ft)	Grade
Jts	Len (ft)	Btm (ftKB)	Btm (TVD) (ftKB)
Perforation Data			
Zone	Bnch/St g	Entered Shot Total	Top (ftKB)
CODELL, ORIGINAL HOLE		40	6,826.00
Btm (ftKB)	Date		
6,836.00	10/9/1992		
Stimulations & Treatments			
Date	Zone	Primary Job Type	
10/9/1992	CODELL, ORIGINAL HOLE	DRILLING/COMPLETION - ORIGINAL	
Technical Result	Tech Result Details		Tech Result Note
Comment			
Other In Hole			
Run Date	Des	OD (in)	Top (ftKB)
9/18/2013	Cast Iron Bridge Plug	2.99	6,726.0
Btm (ftKB)			
6,728.0			
Logs			
Date	Type	Top (ftKB)	Btm (ftKB)
10/3/1992	COMPENSATED DENSITY	4,090.0	6,965.0
10/3/1992	INDUCTION	4,090.0	4,530.0
10/7/1992	CBL/CCL/GR	5,840.0	6,943.0