



CEMENT BOND
LOG

Mesa Wireline

Company	MARATHON OIL COMPANY		
Well	FRENCH LAKE 3-63-22-1H		
Field	WATTENBERG		
County	WELD		
State	COLORADO		
Company	MARATHON OIL COMPANY		
Well	FRENCH LAKE 3-63-22-1H		
Field	WATTENBERG		
County	WELD		
State	COLORADO		
Location:	API # : 05-123- 35217 -0000 35218	Other Services	
	LATITUDE: 40.219487	Corrected by	
	LONGITUDE: -104.403048	T. Stebbins, Marathon Oil	
	SEC: 14 TWP: 3N RGE: 63W	Elevation	
Permanent Datum	GROUND LEVEL	Elevation 4745'	
Log Measured From	KELLY BUSHING = 25'	K.B. 4770'	
Drilling Measured From	KELLY BUSHING	D.F. 4769'	
		G.L. 4745'	

Date	7 MAY 2012		
Run Number	ONE		
Depth Driller	5835'		
Depth Logger	5815'		
Bottom Logged Interval	5815'		
Top Log Interval	SURFACE		
Open Hole Size	8.875"		
Type Fluid	WATER		
Density / Viscosity	~8.3#		
Max. Recorded Temp.	206 DEG F		
Estimated Cement Top	1310'		
Time Well Ready	N/A		
Time Logger on Bottom	N/A		
Equipment Number	10501 PRD02		
Location	AULT, CO		
Recorded By	Z. EMICK		
Witnessed By	J. PENNELL		
Borehole Record			
Run Number	Bit	From	To
ONE	12.25"	0'	670'
TWO	8.875"	670'	7300'
THREE	6"	7300'	10350'
Tubing Record			
Casing Record	Size	Weight	Top
Surface String	9.625"	40#	0'
Prot. String			
Production String	7"	32#	0'
Liner	4.5"	11.6#	UNKNOWN

<<< Fold Here >>>

All interpretations are opinions based on inferences from electrical or other measurements and we cannot and do not guarantee the accuracy or correctness of any interpretation, and we shall not, except in the case of gross or willful negligence on our part, be liable or responsible for any loss, costs, damages, or expenses incurred or sustained by anyone resulting from any interpretation made by any of our officers, agents or employees. These interpretations are also subject to our general terms and conditions set out in our current Price Schedule.

Comments

LOG NOT CORRELATED TO ANY OTHER LOG

WE APPRECIATE YOUR BUSINESS, MESA WIRELINE LLC, GRAND JUNCTION CO. (970) 257-0458



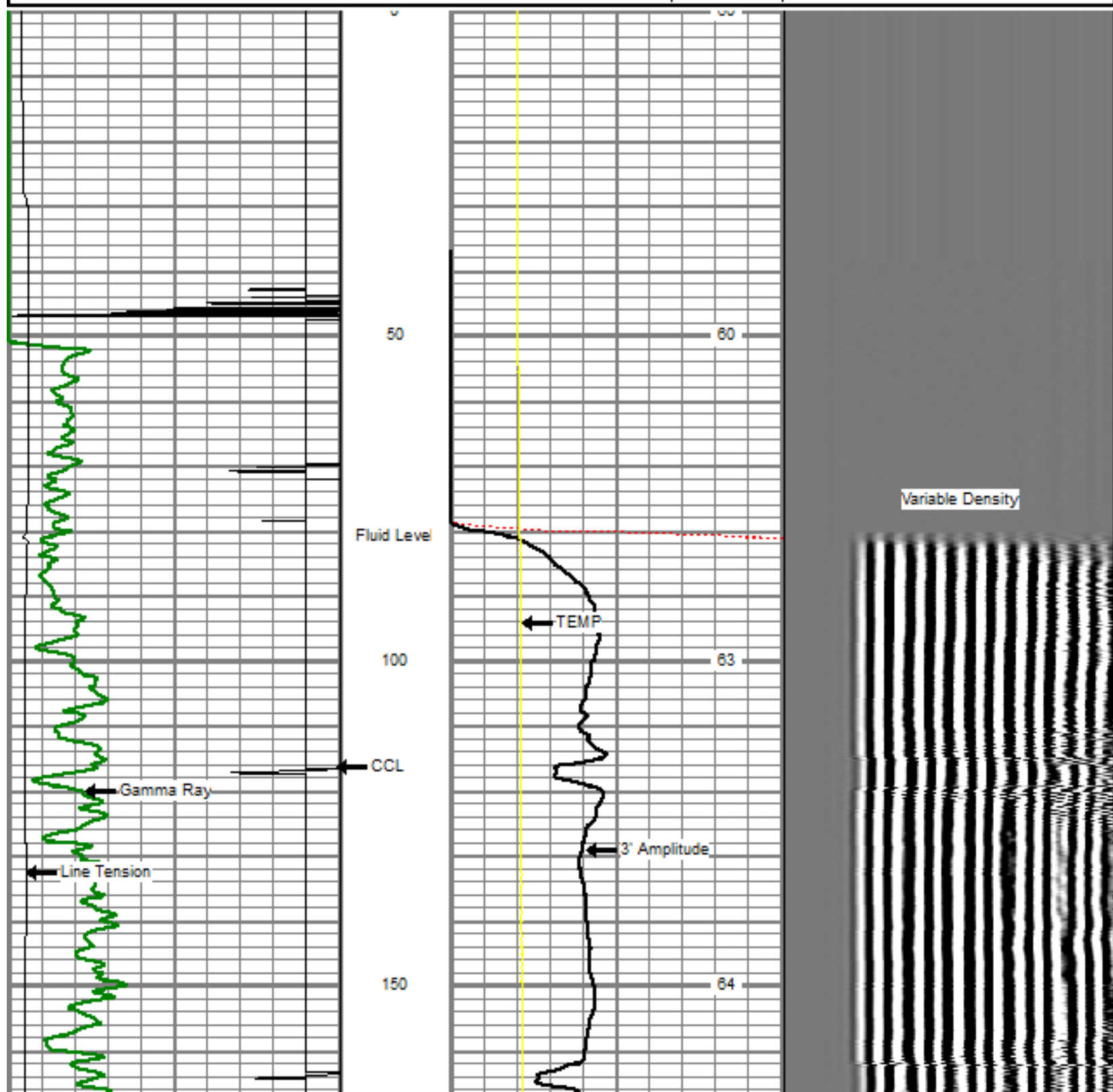
MAIN PASS

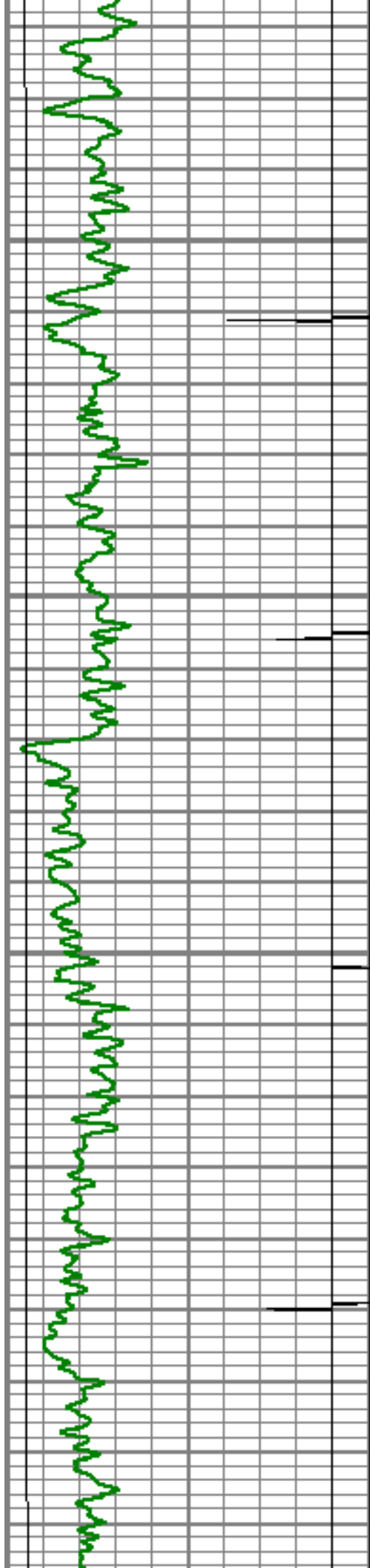
Database File: french lake 3-63-22-1h.db
Dataset Pathname: pass2.1
Presentation Format: dobl_prb
Dataset Creation: Mon May 07 09:28:07 2012 by Calc SCH 110722
Charted by: Depth in Feet scaled 1:240

0	Gamma Ray (GAPI)	200
0	LTEN (lb)	5000
9	CCL	-1

0	Amplified Amplitude (mV)	20
0	Amplitude (mV)	100
0	TT3 (usec)	280
0	TEMP (degF)	300
	TEMP (degF)	

200 Variable Density 1200



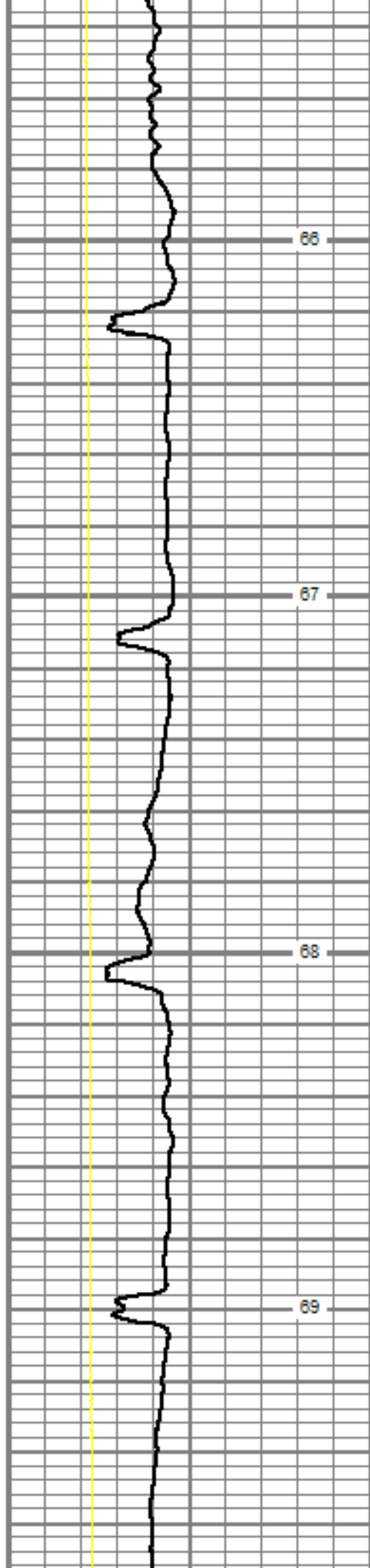


200

250

300

350



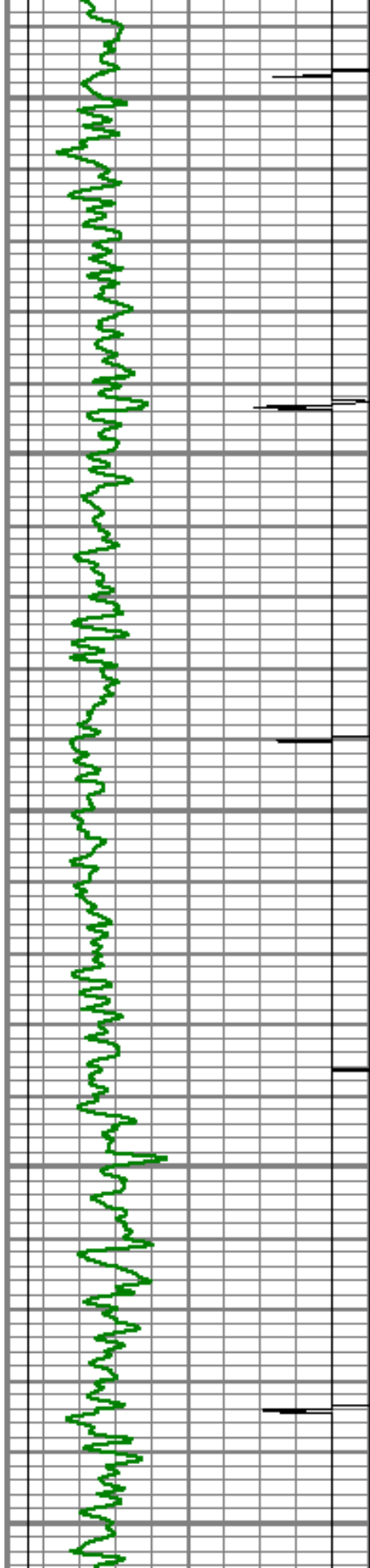
66

67

68

69





400

450

500

550

600

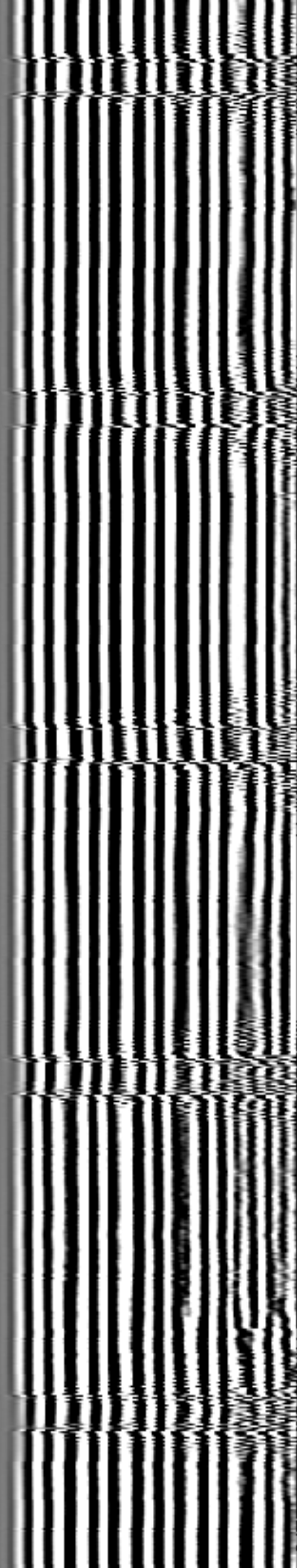
70

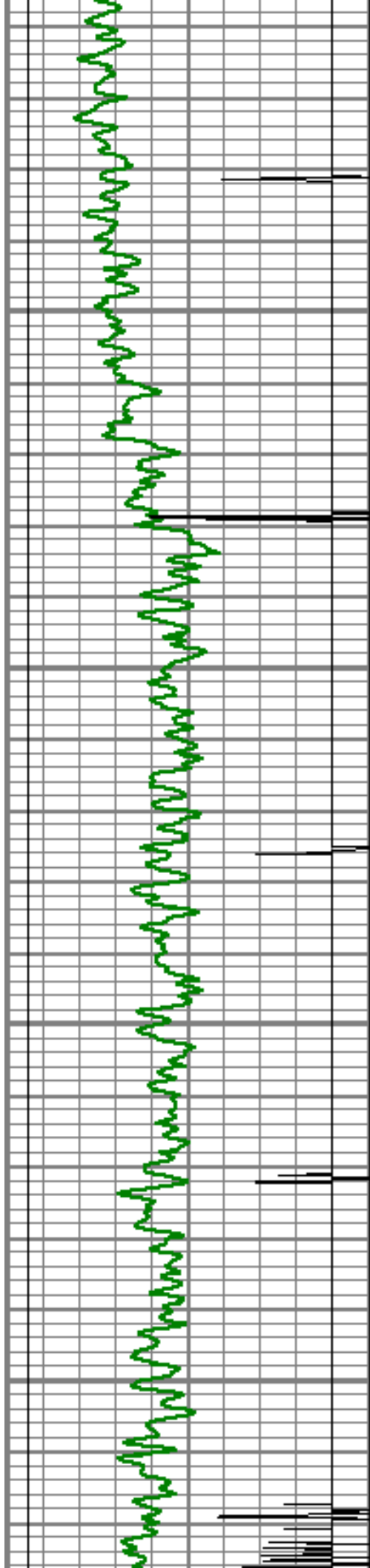
71

73

74

75





650

700

750

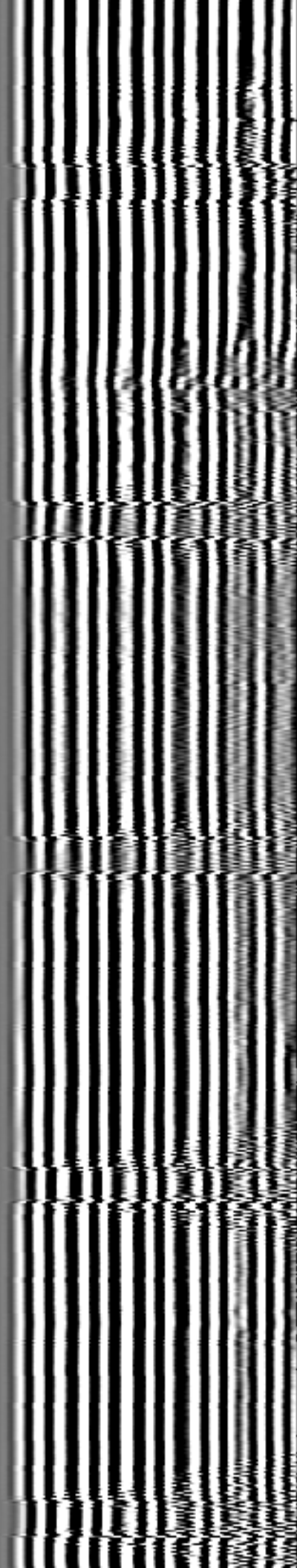
800

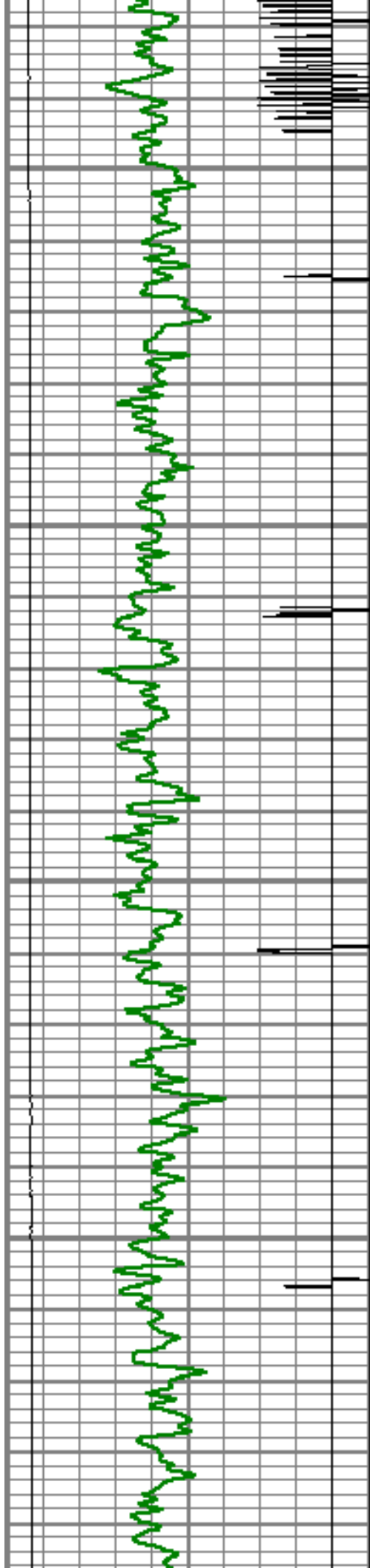
76

77

78

79



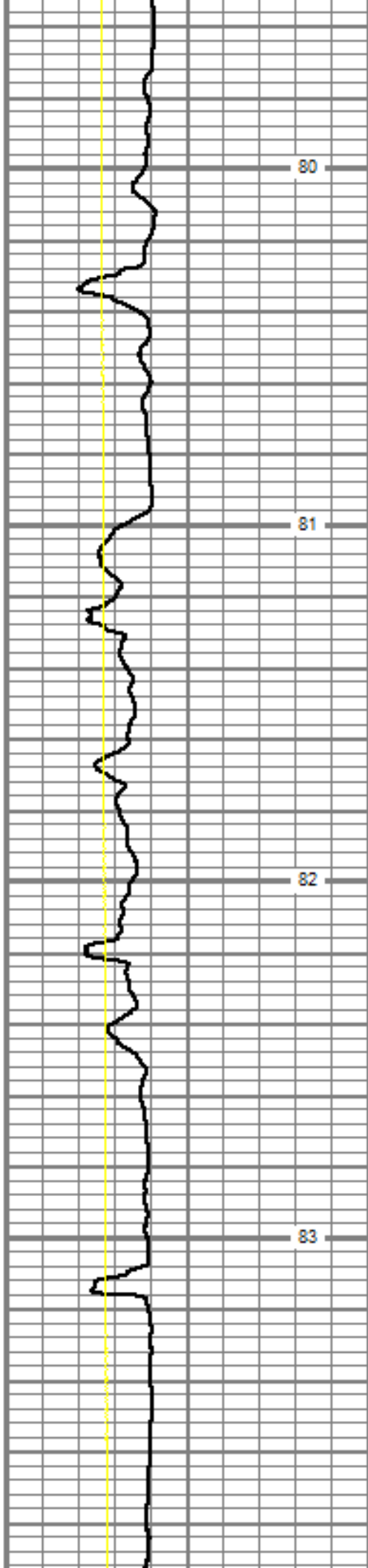


850

900

950

1000

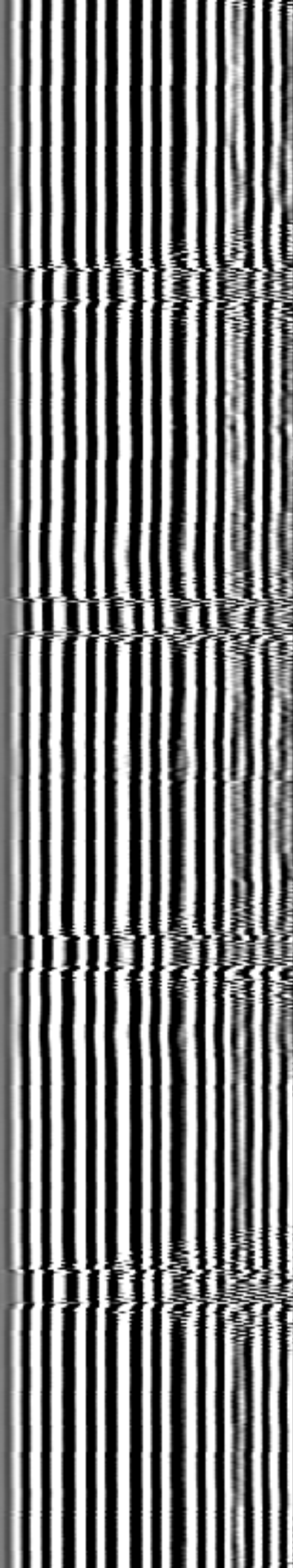


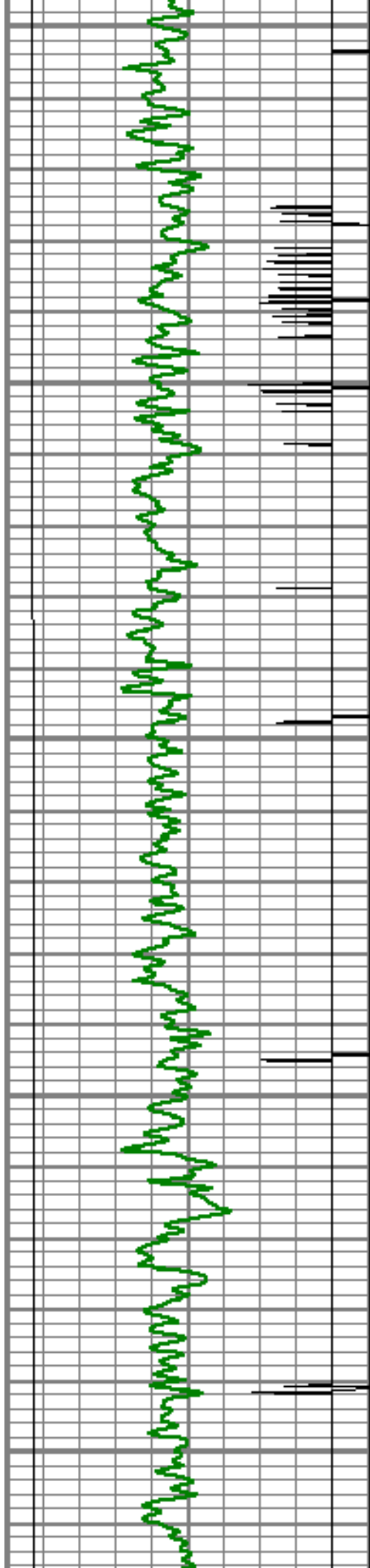
80

81

82

83





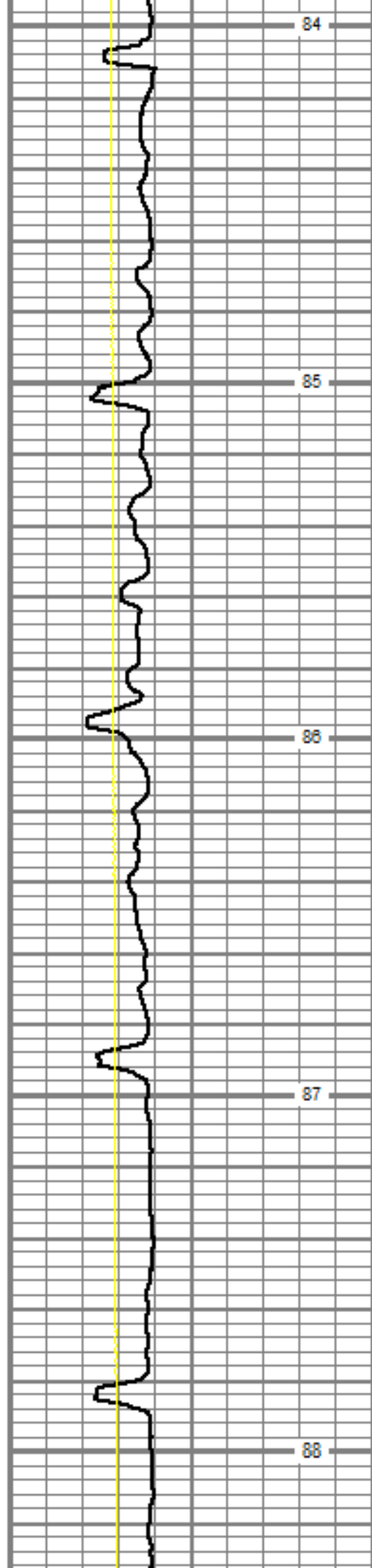
1050

1100

1150

1200

1250



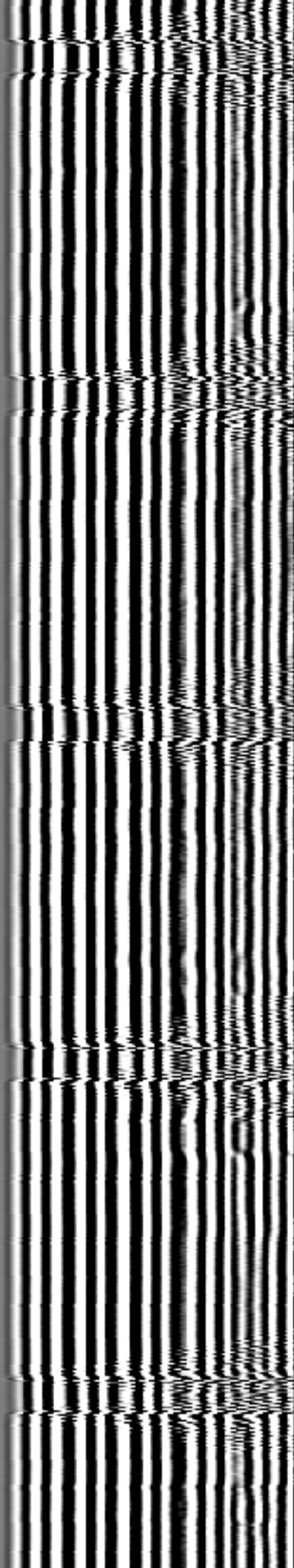
84

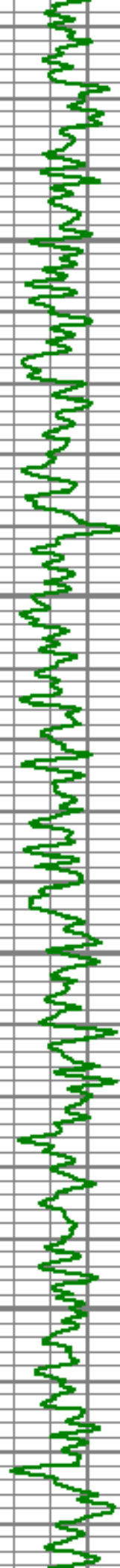
85

86

87

88





Top of Cement

1300

89

1350

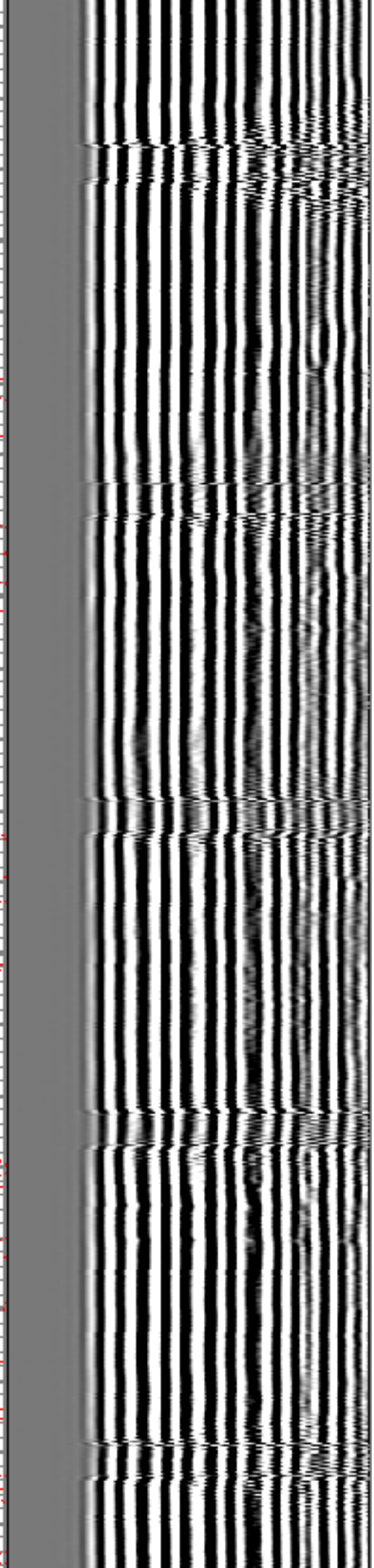
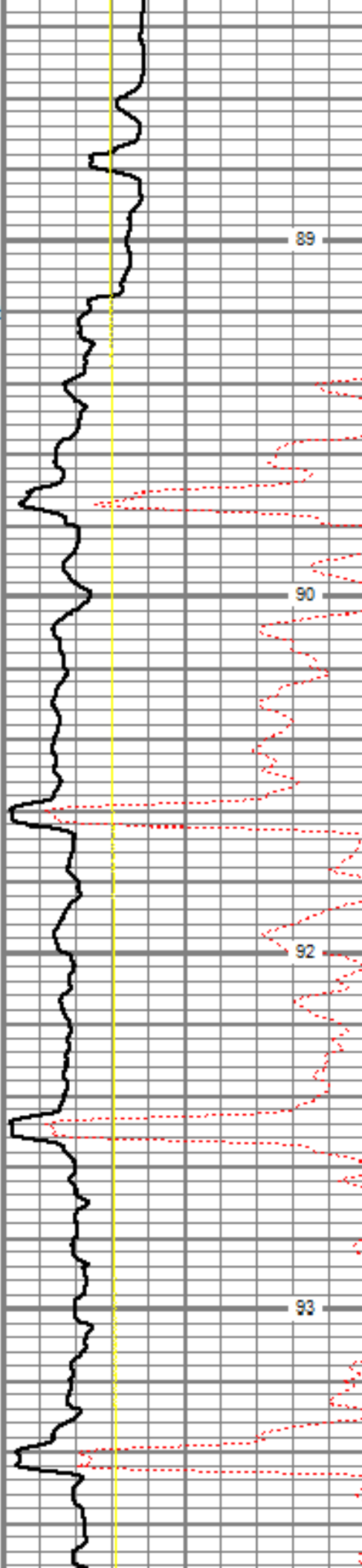
90

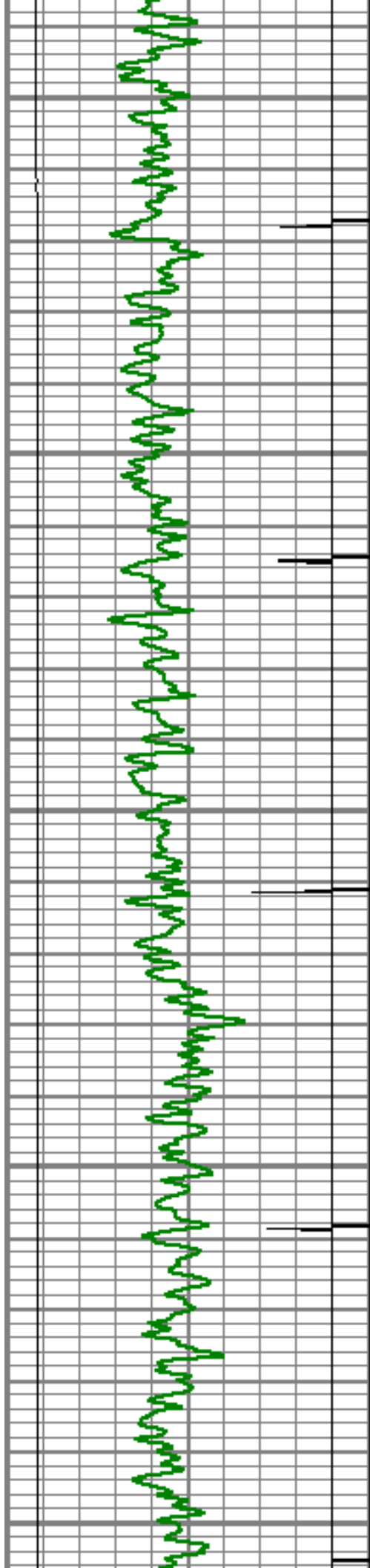
1400

92

1450

93





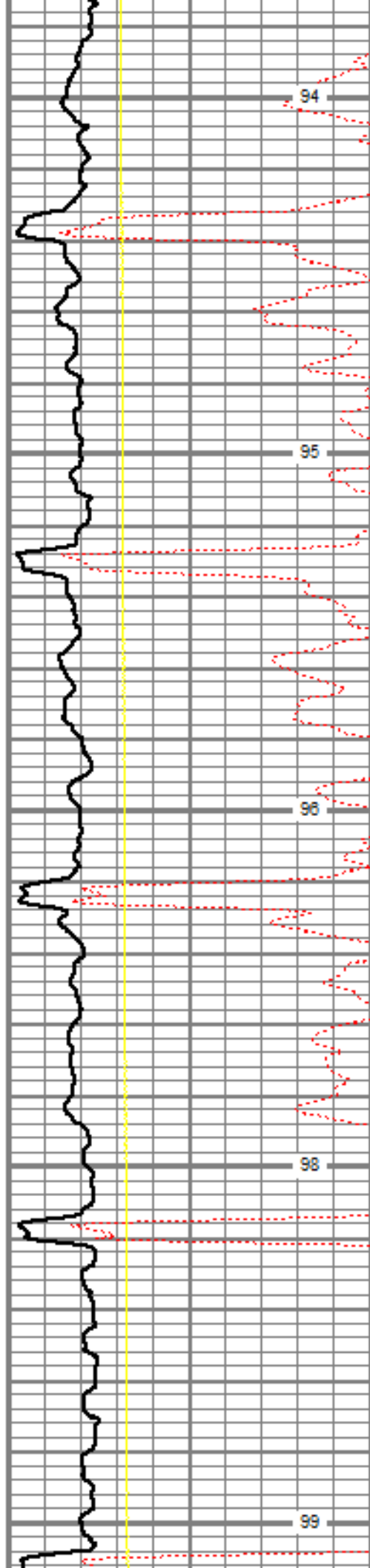
1500

1550

1600

1650

1700



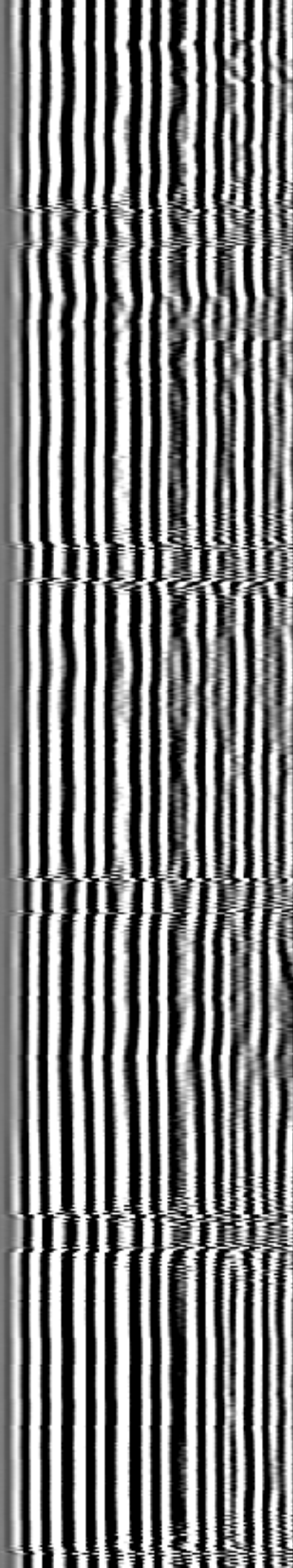
94

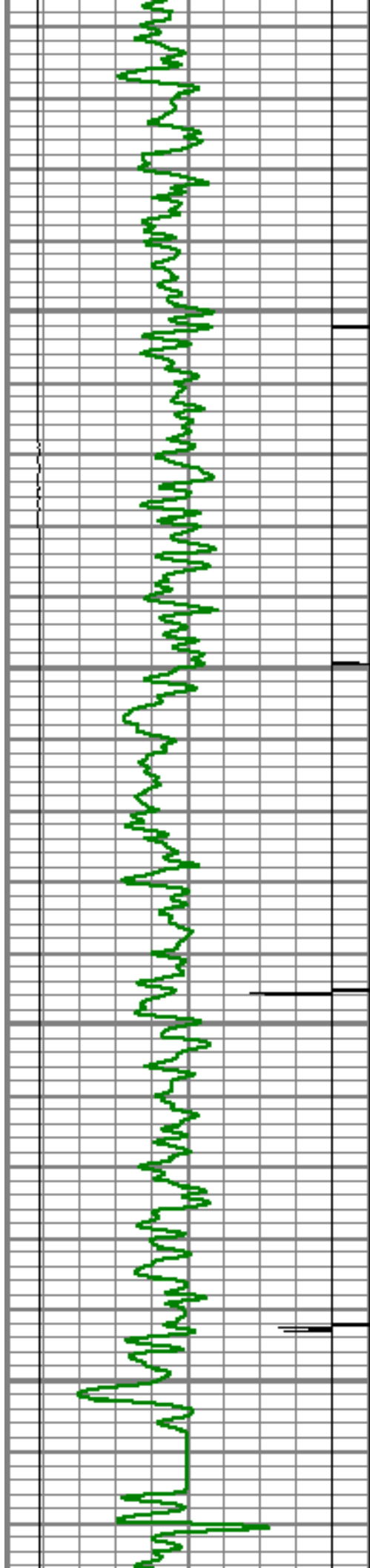
95

96

98

99



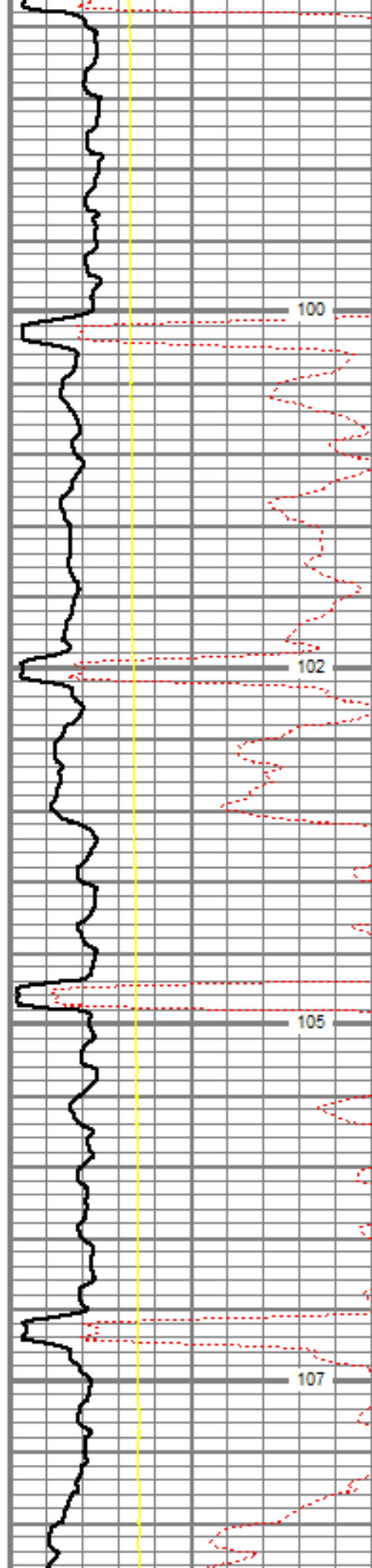


1750

1800

1850

1900

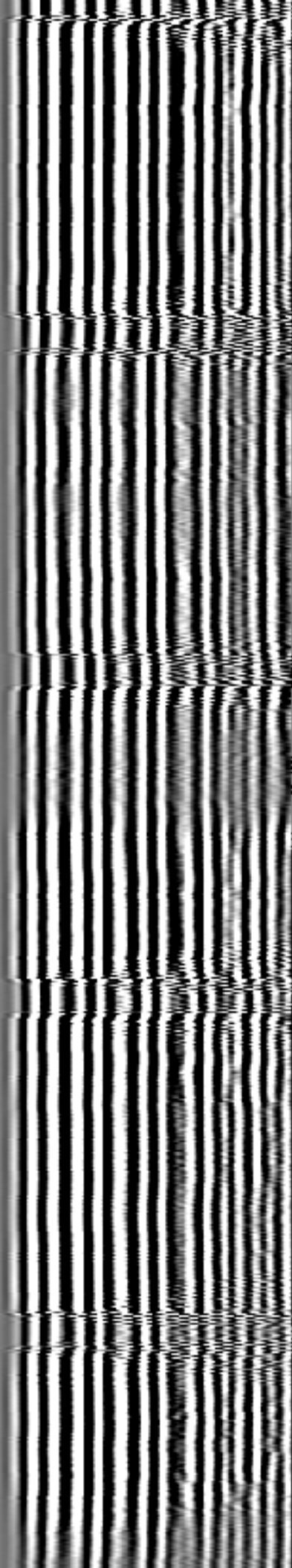


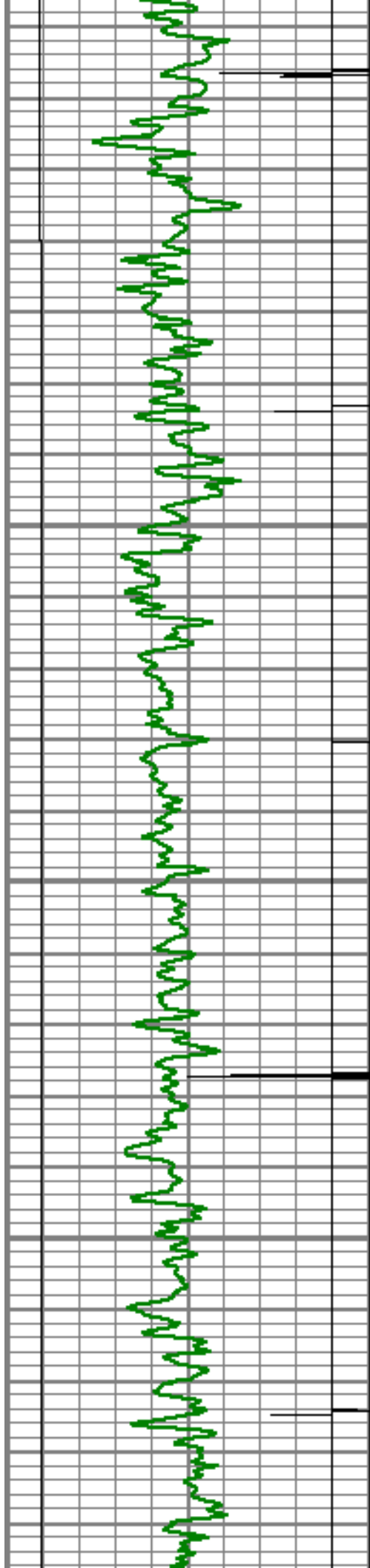
100

102

105

107



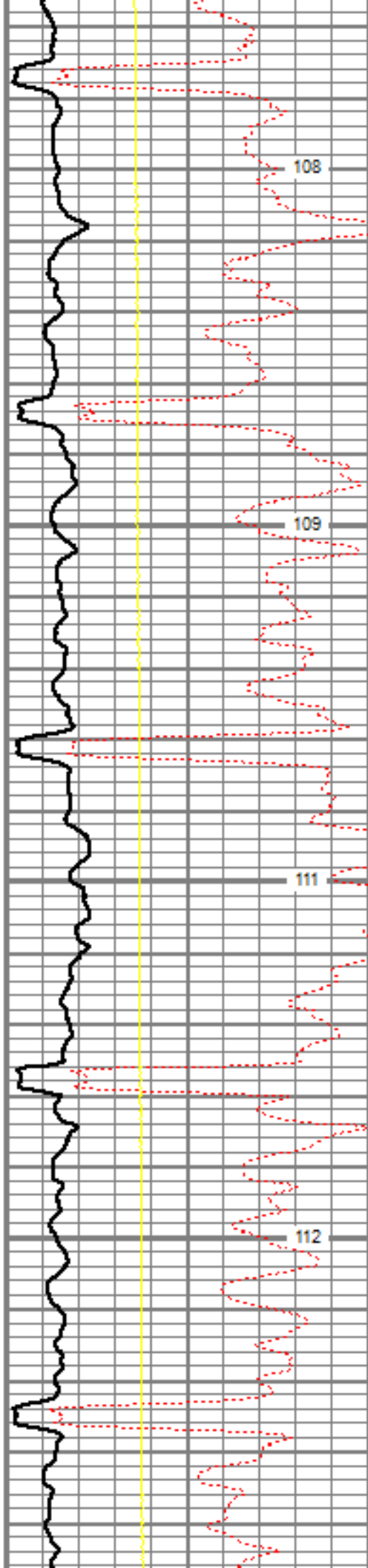


1950

2000

2050

2100

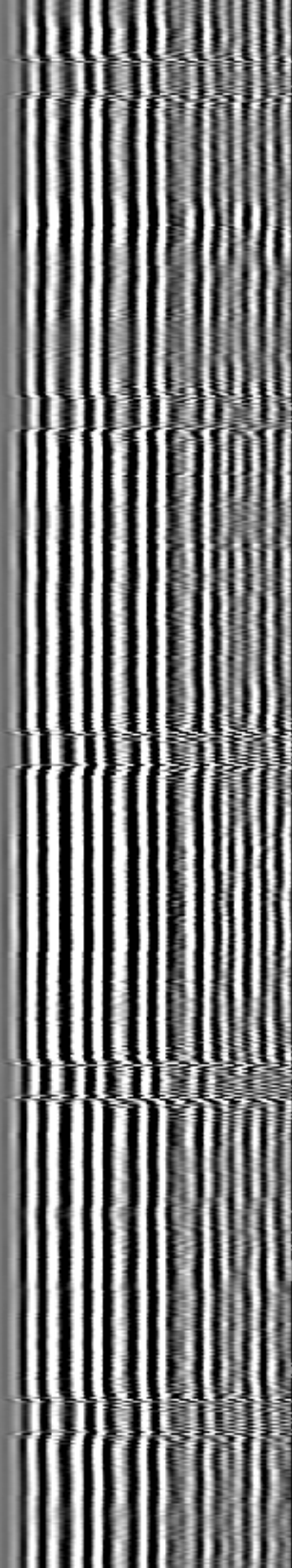


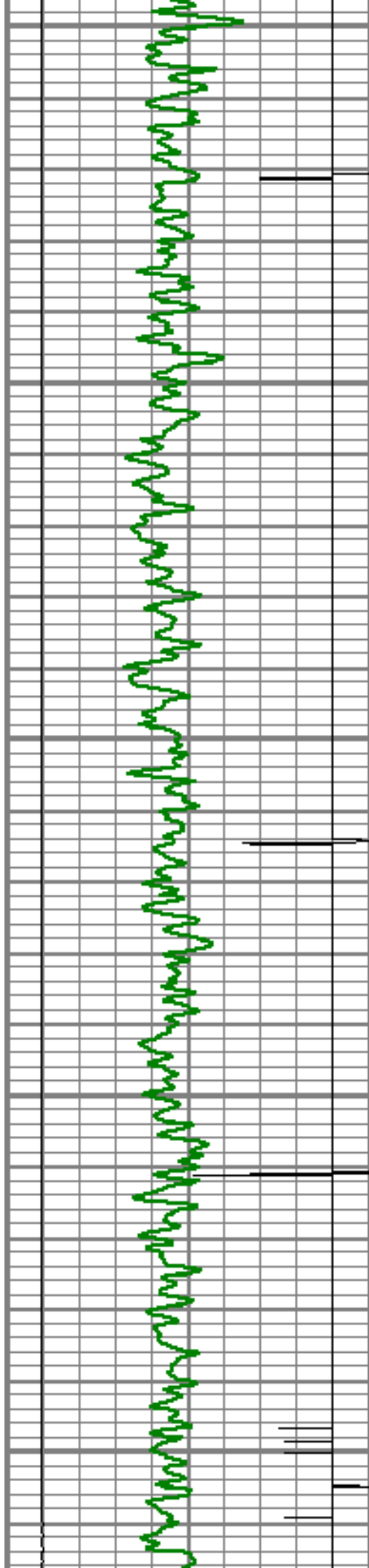
108

109

111

112





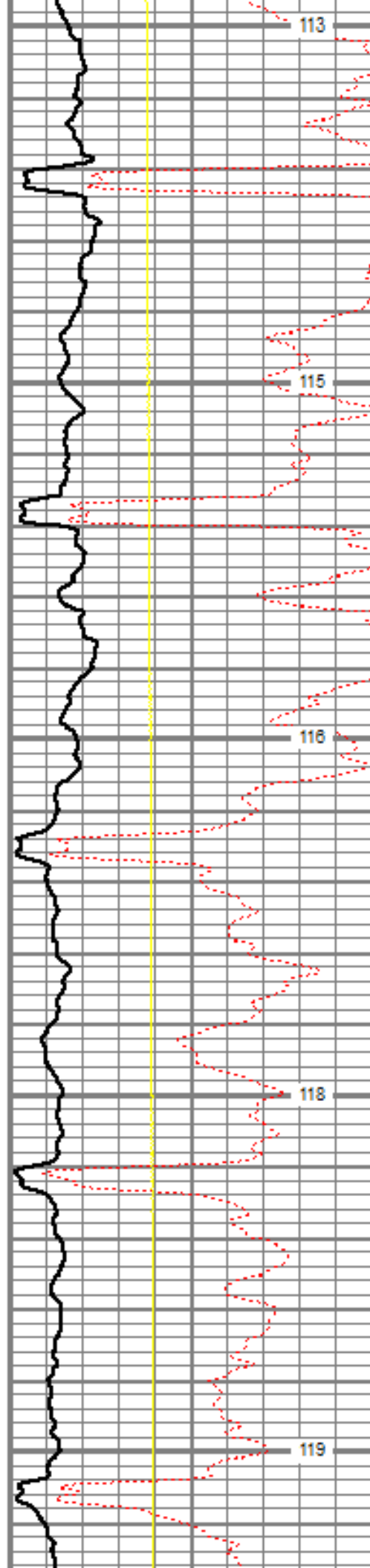
2150

2200

2250

2300

2350



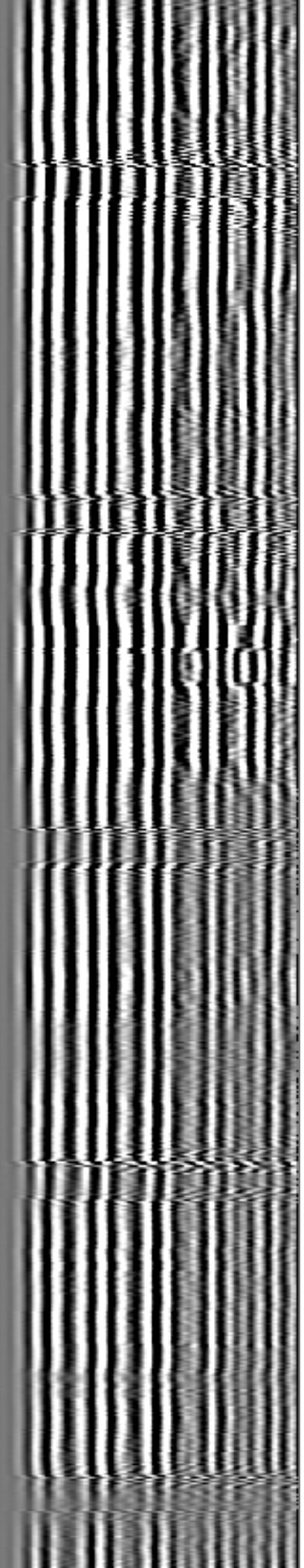
113

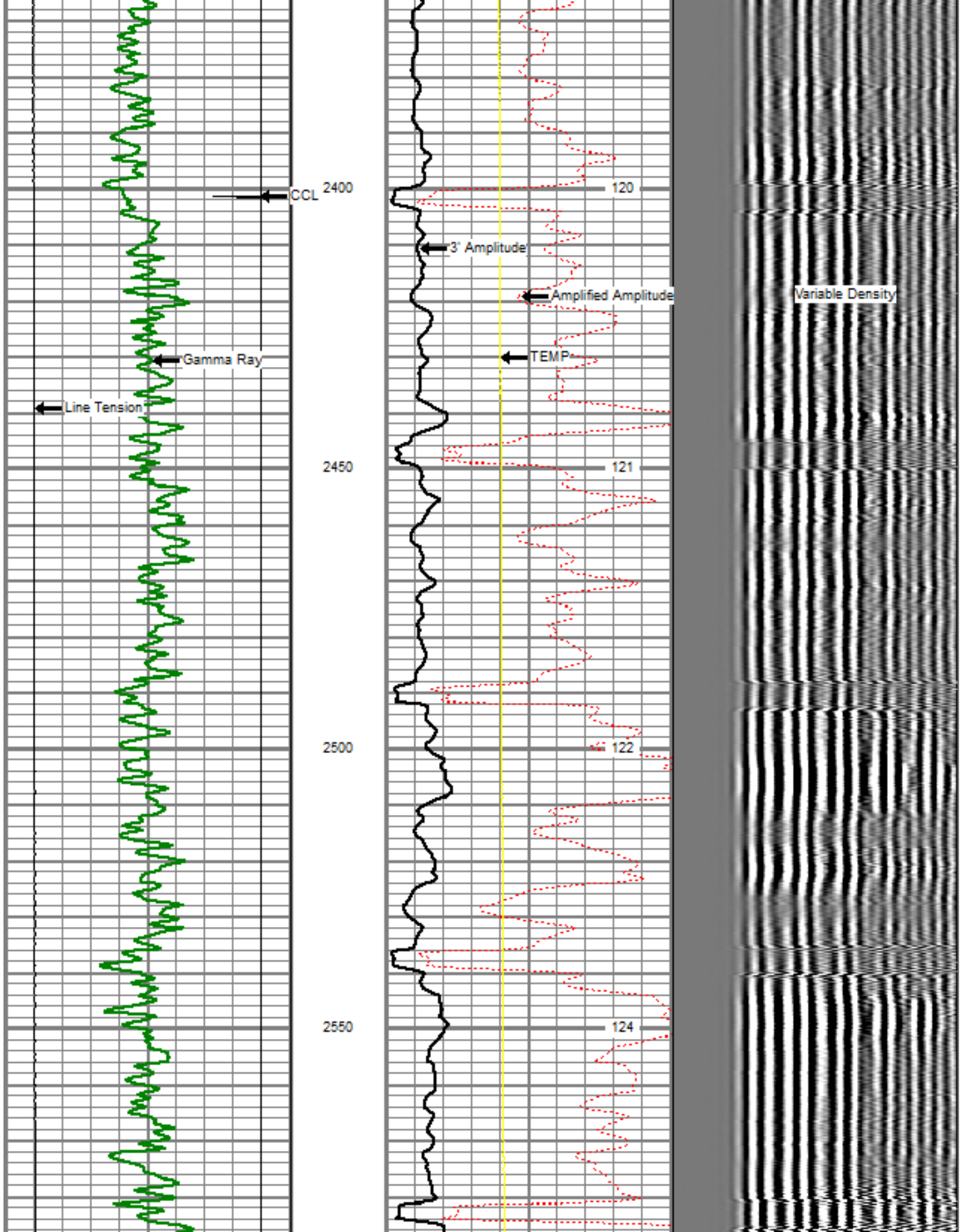
115

116

118

119







2600

125

2650

126

2700

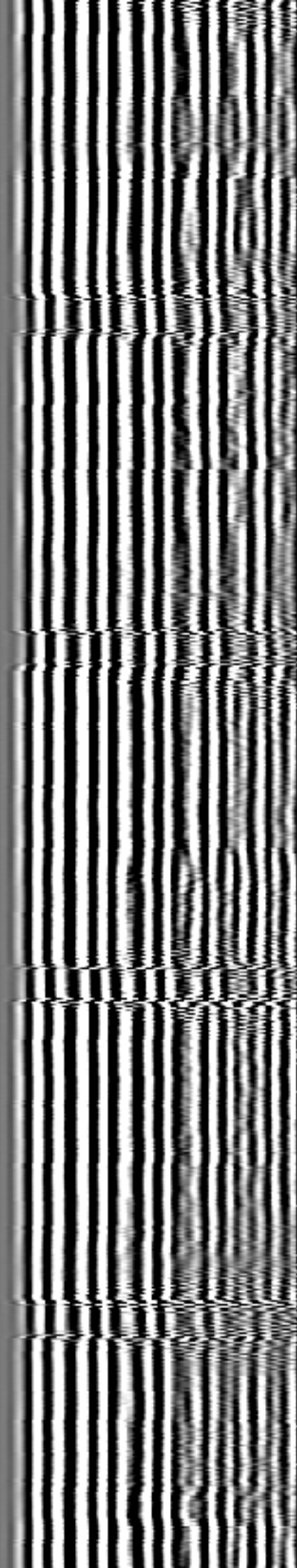
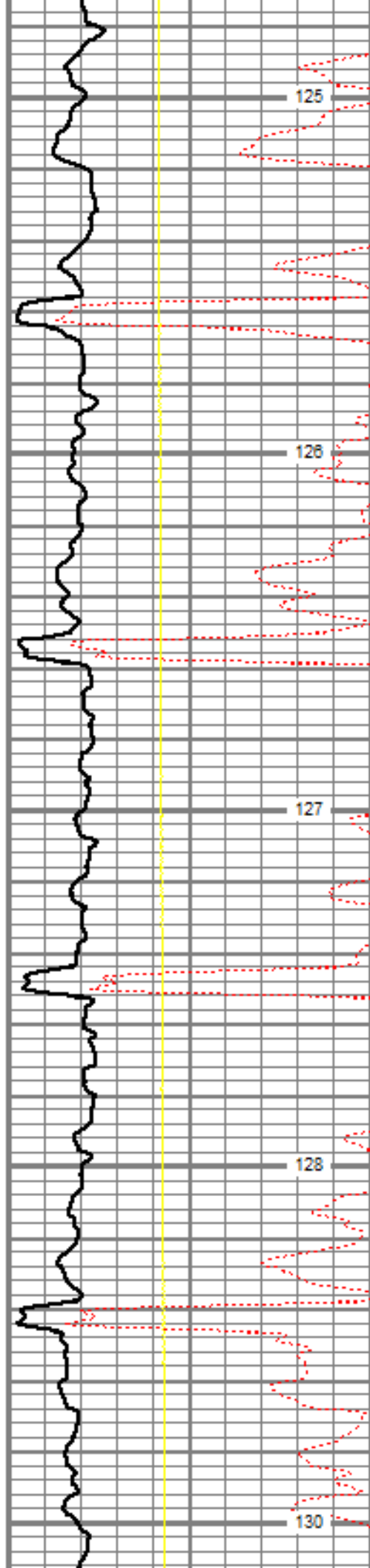
127

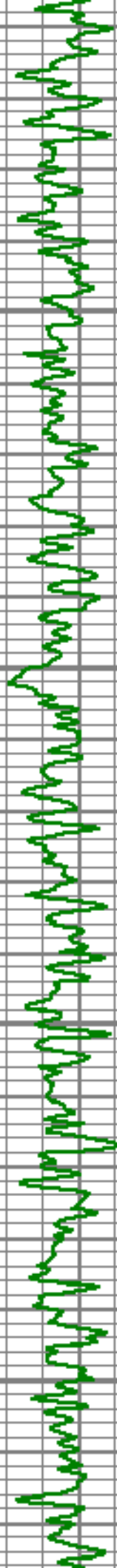
2750

128

2800

130





2850

131

2900

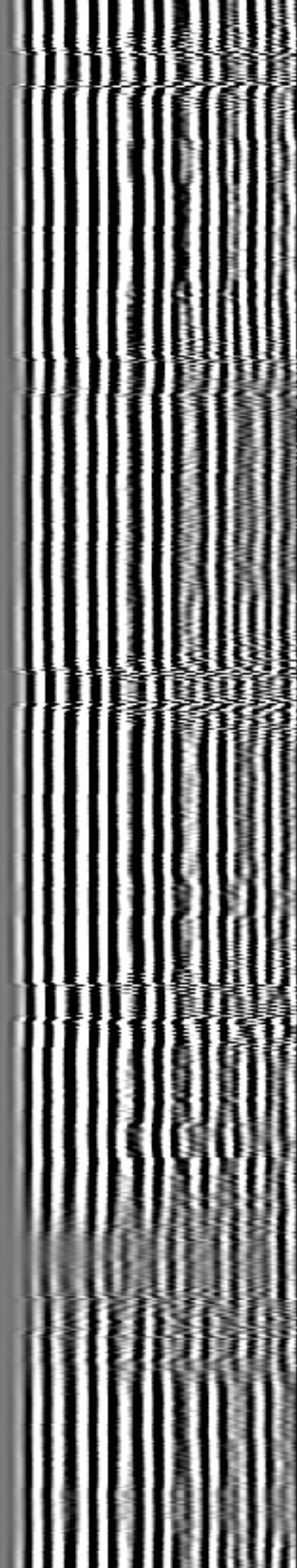
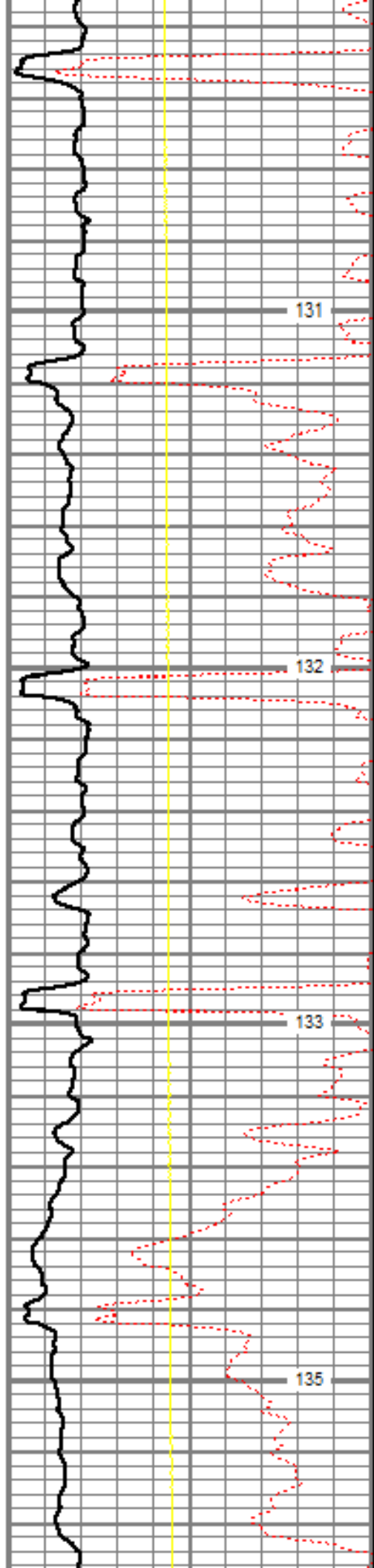
132

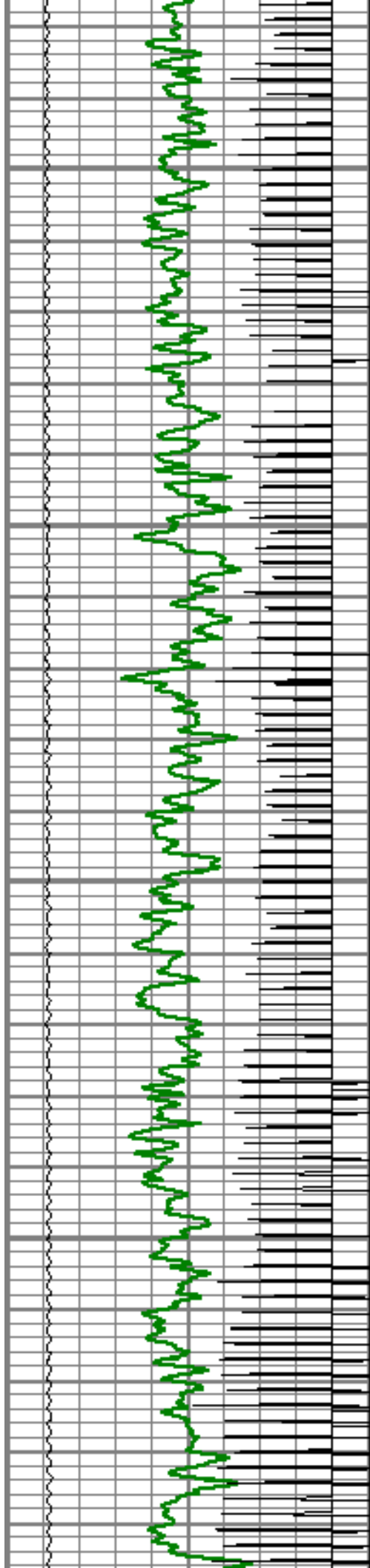
2950

133

3000

135



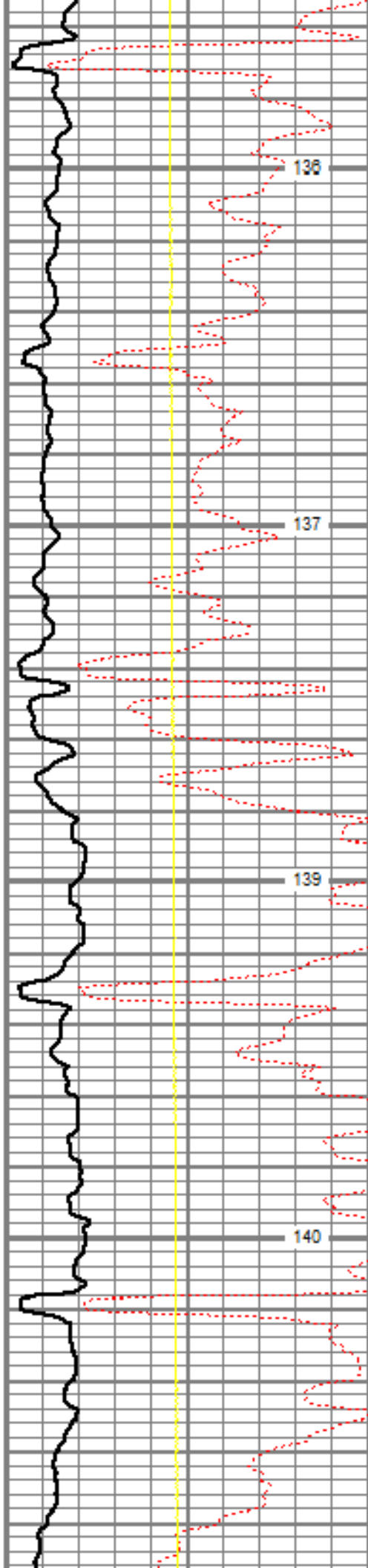


3050

3100

3150

3200

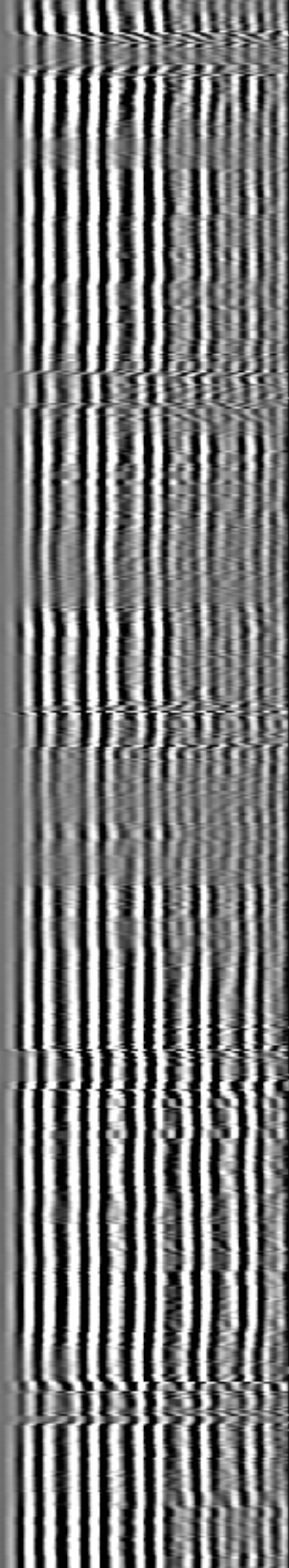
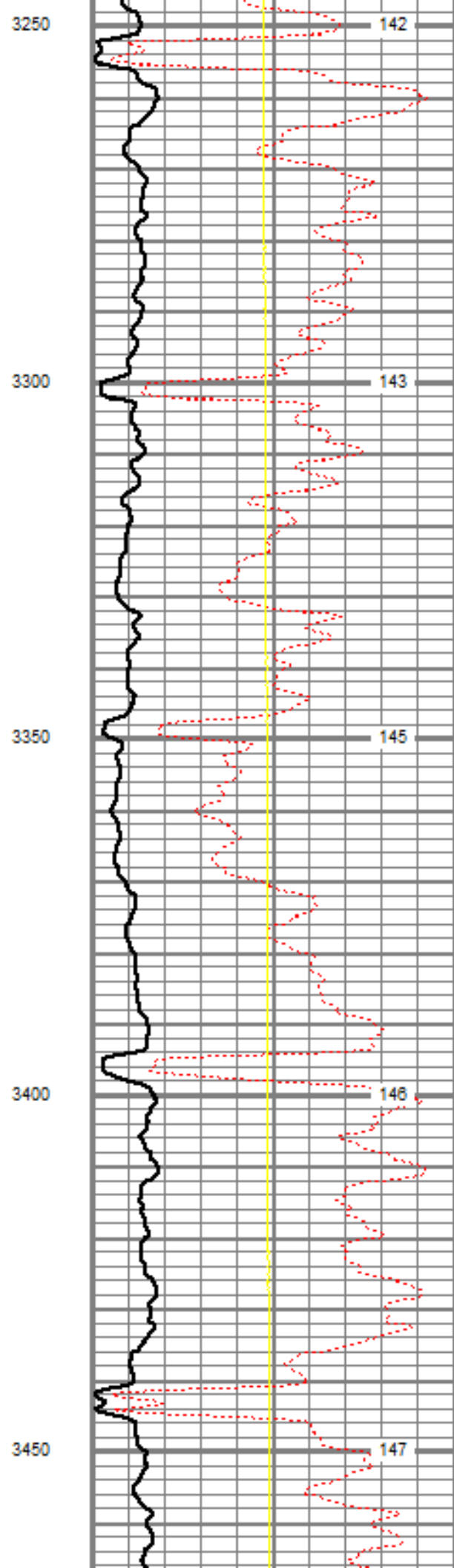
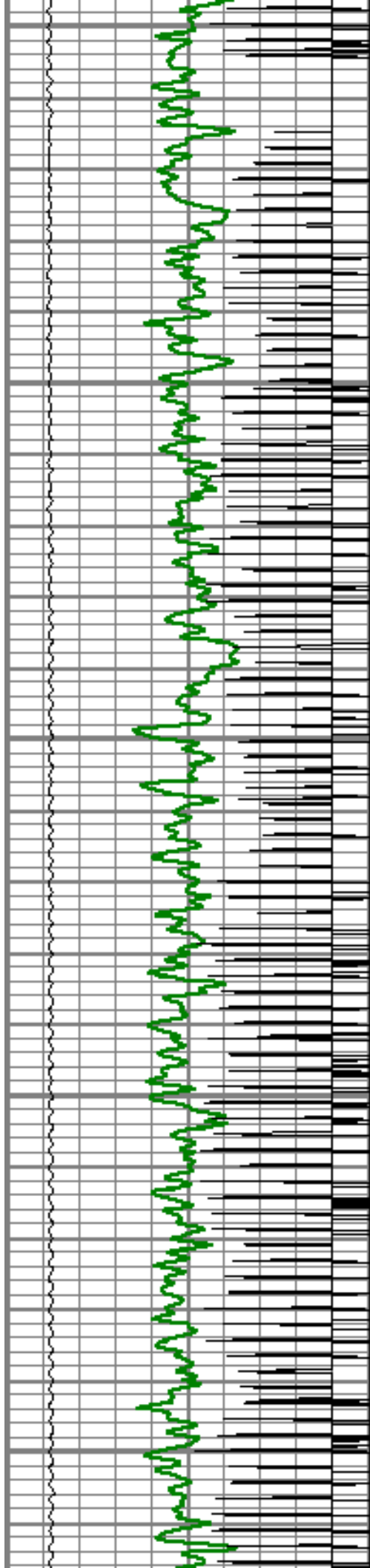


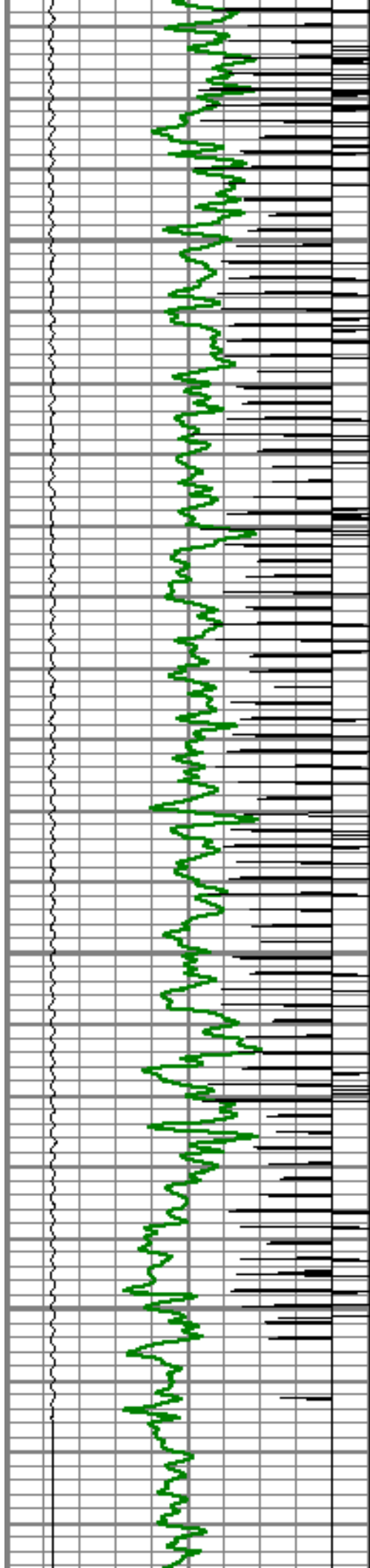
136

137

139

140



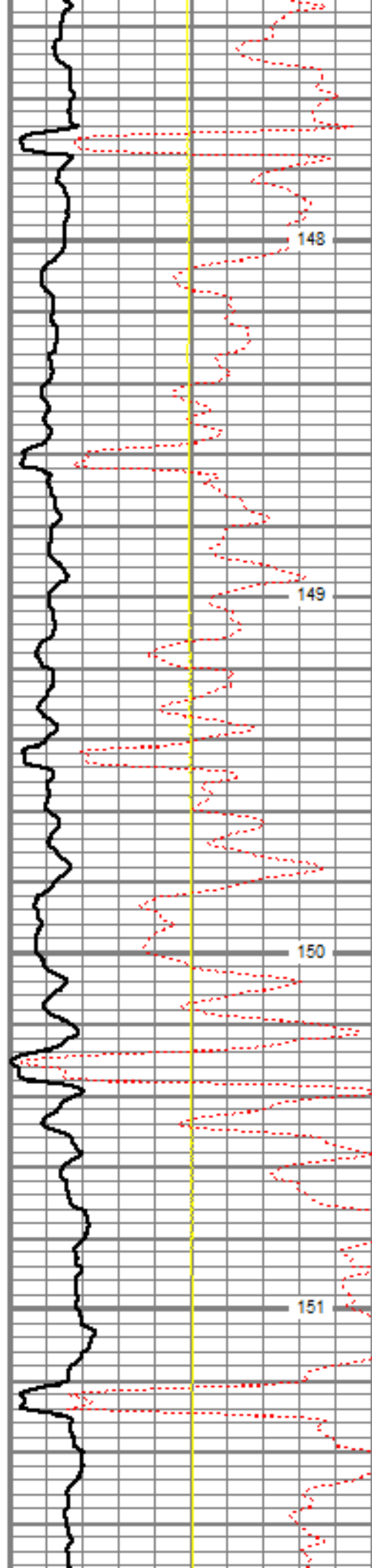


3500

3550

3600

3650

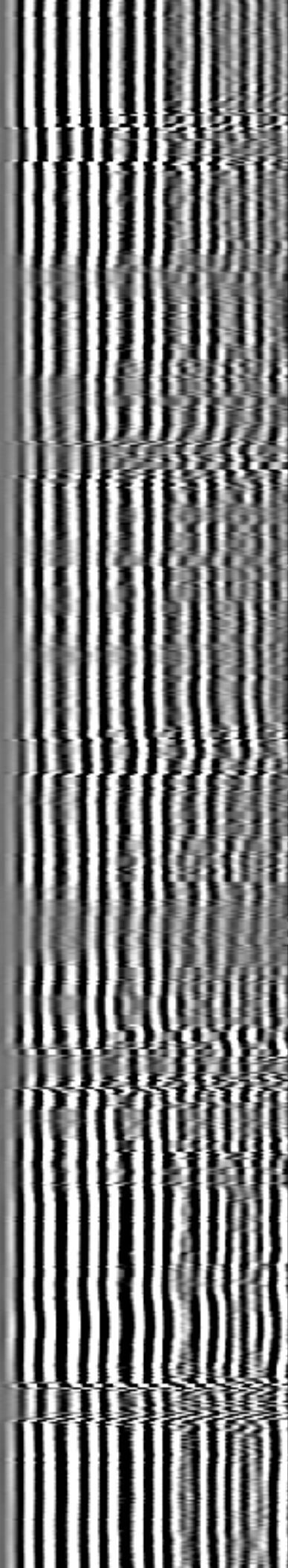


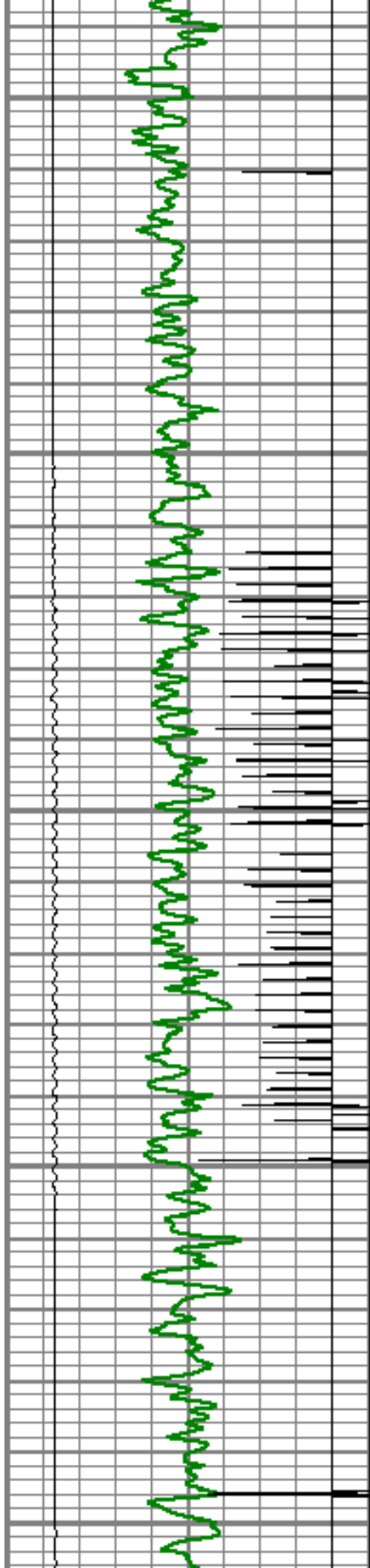
148

149

150

151





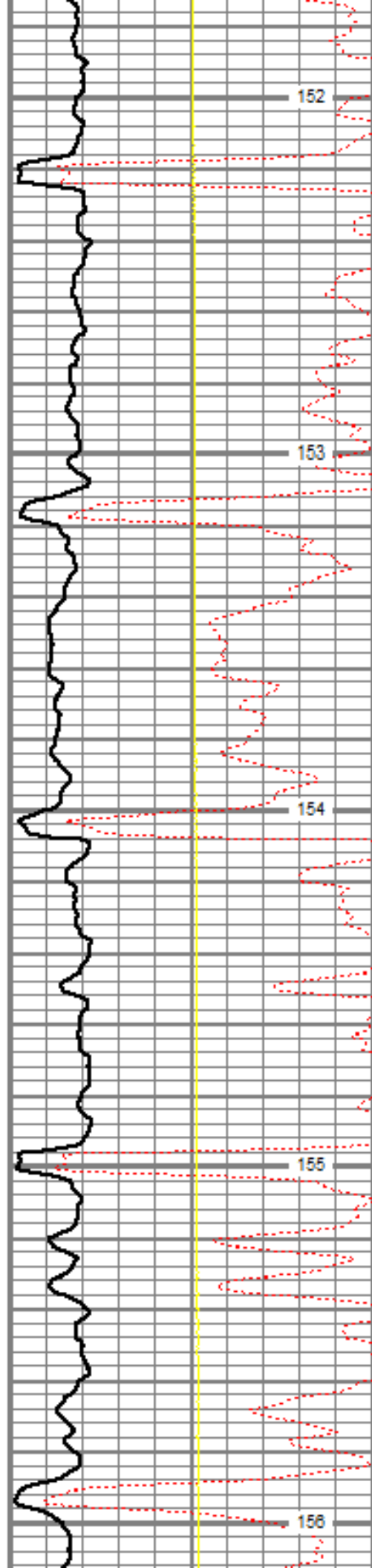
3700

3750

3800

3850

3900



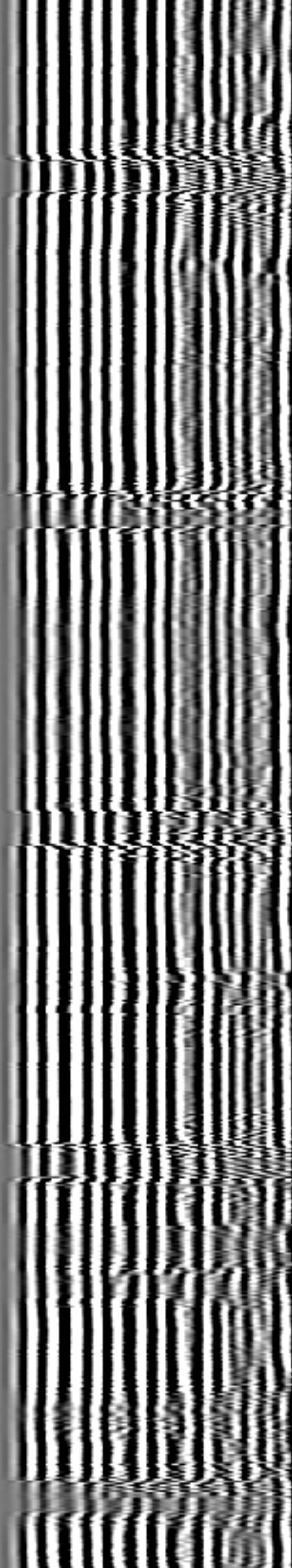
152

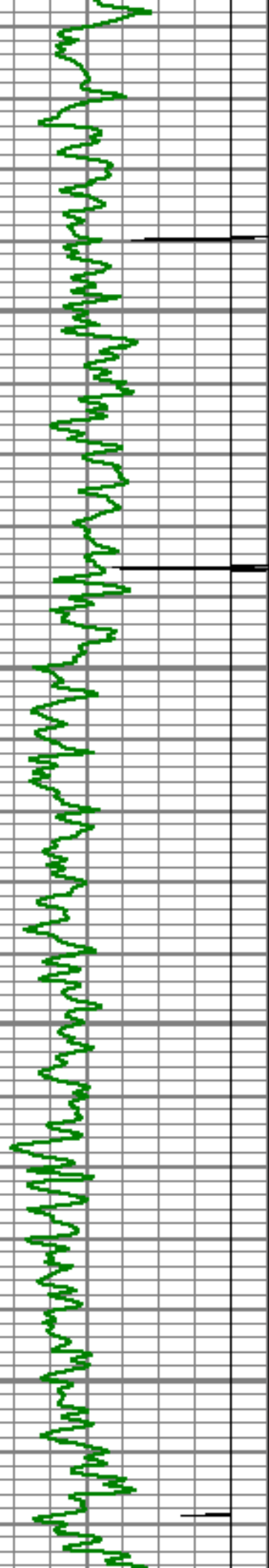
153

154

155

156



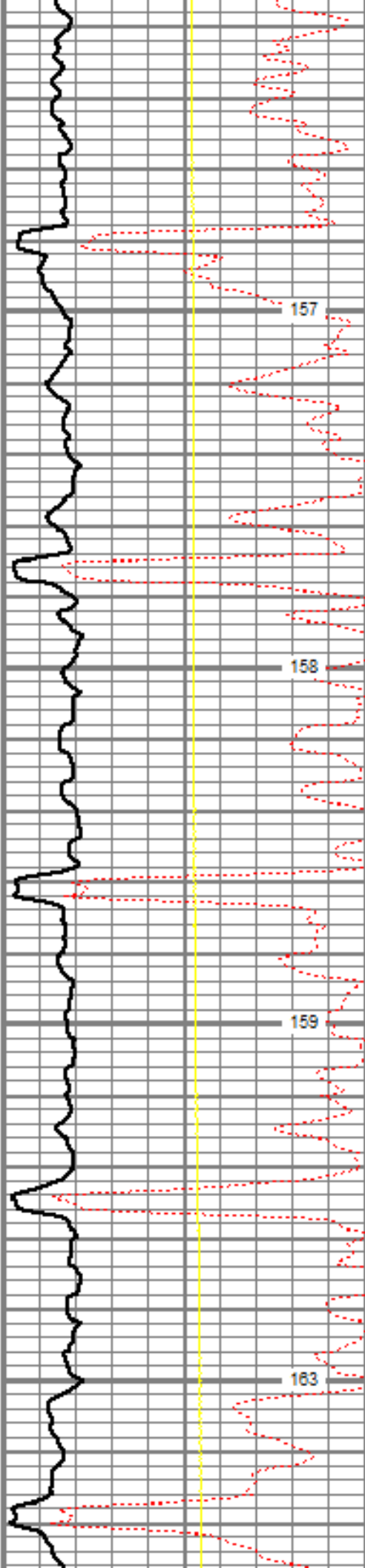


3950

4000

4050

4100

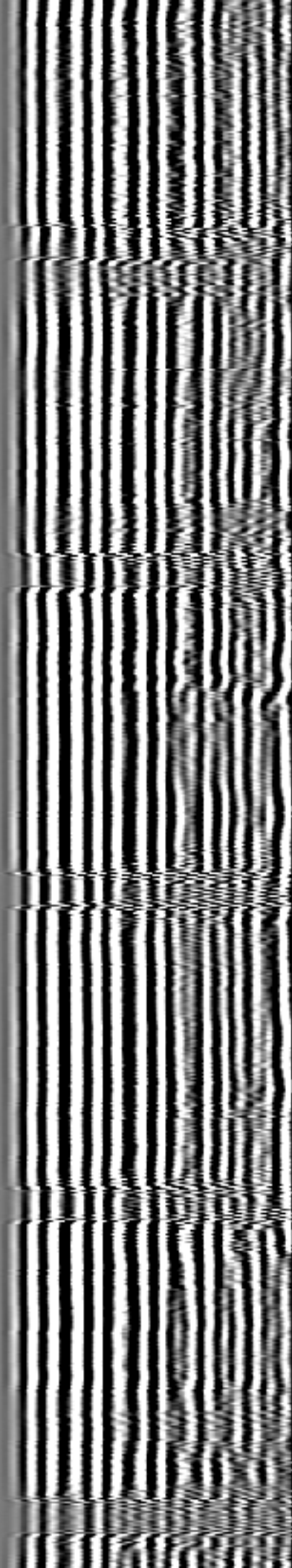


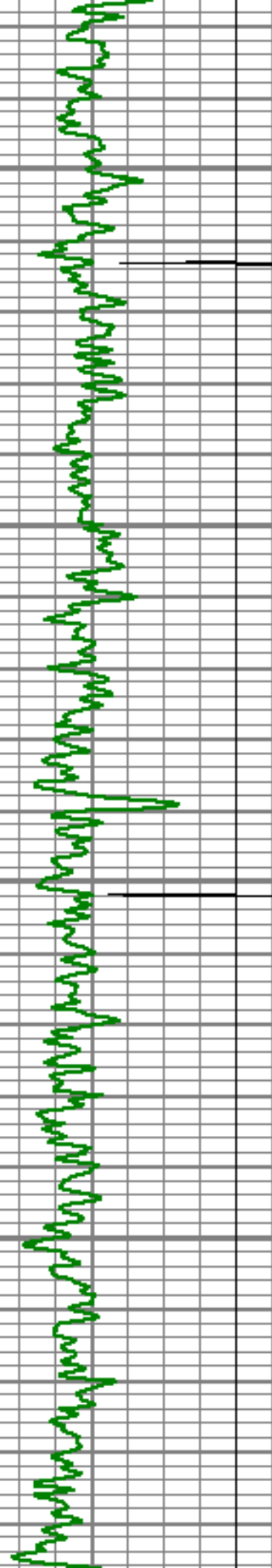
157

158

159

163



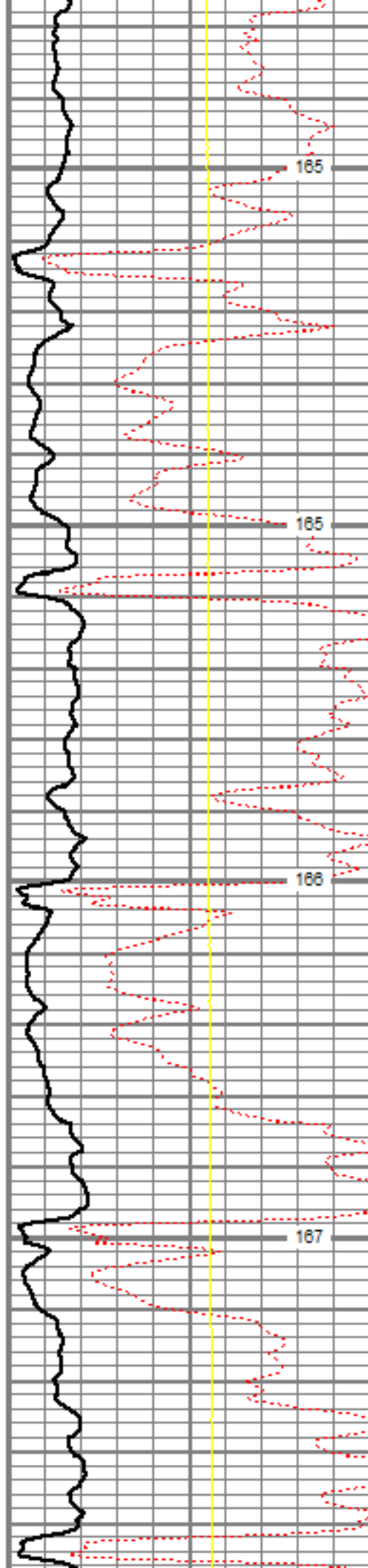


4150

4200

4250

4300

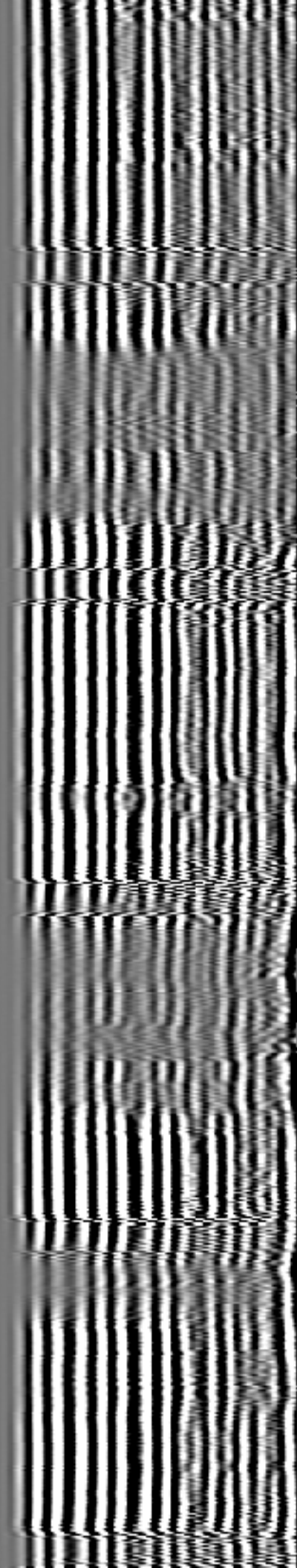


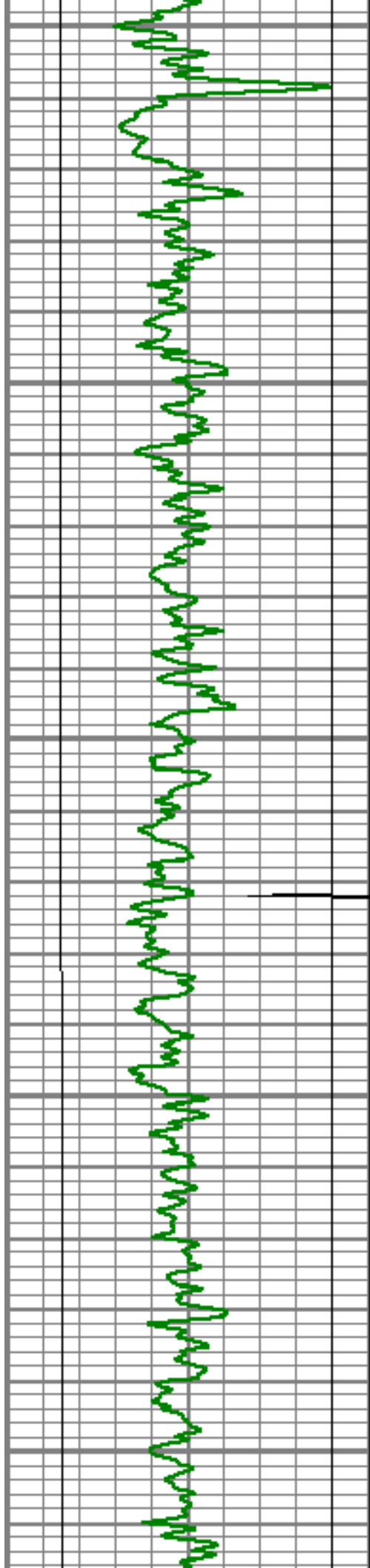
165

165

166

167





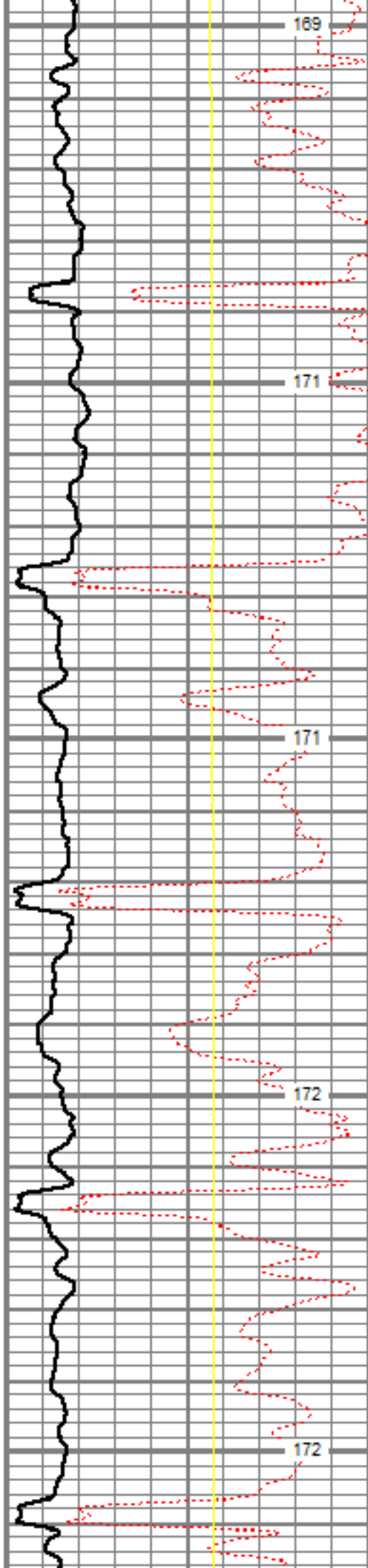
4350

4400

4450

4500

4550



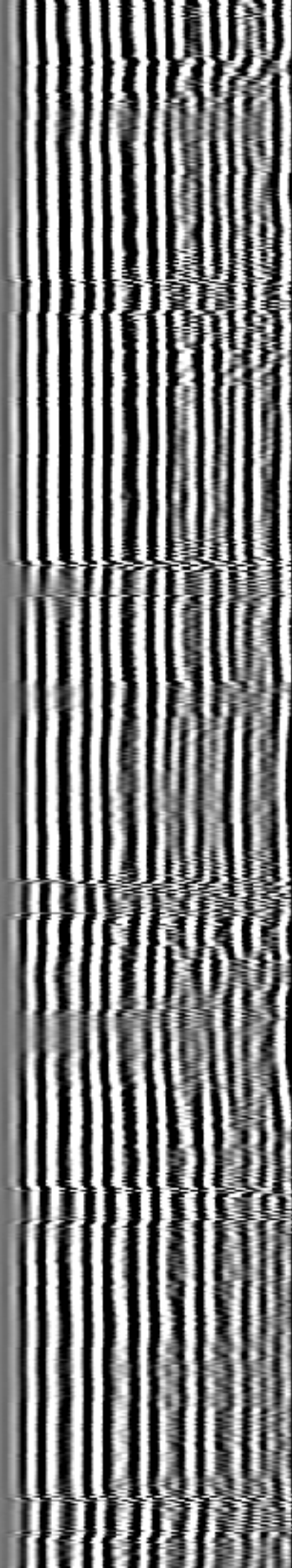
169

171

171

172

172





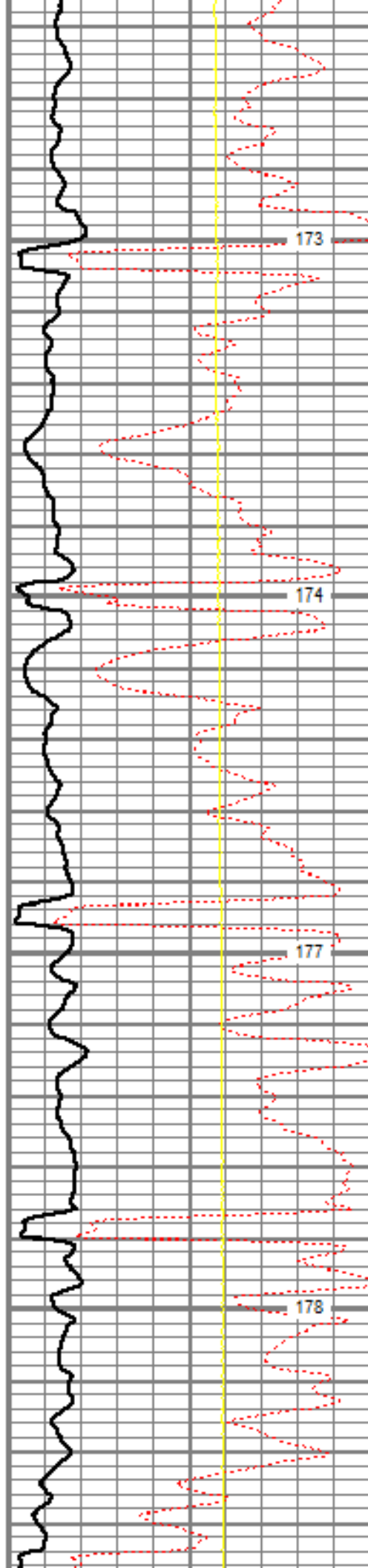
1

4600

4650

4700

4750

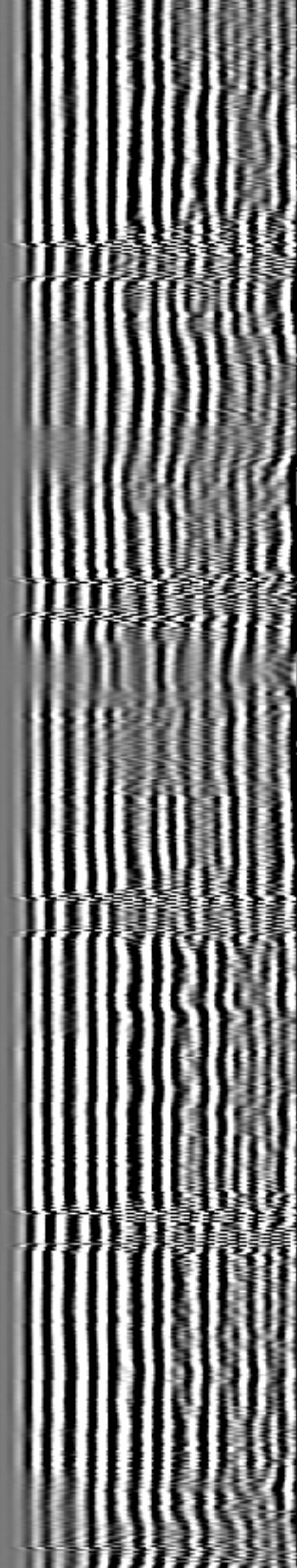


173

174

177

178





4800

179

4850

180

4900

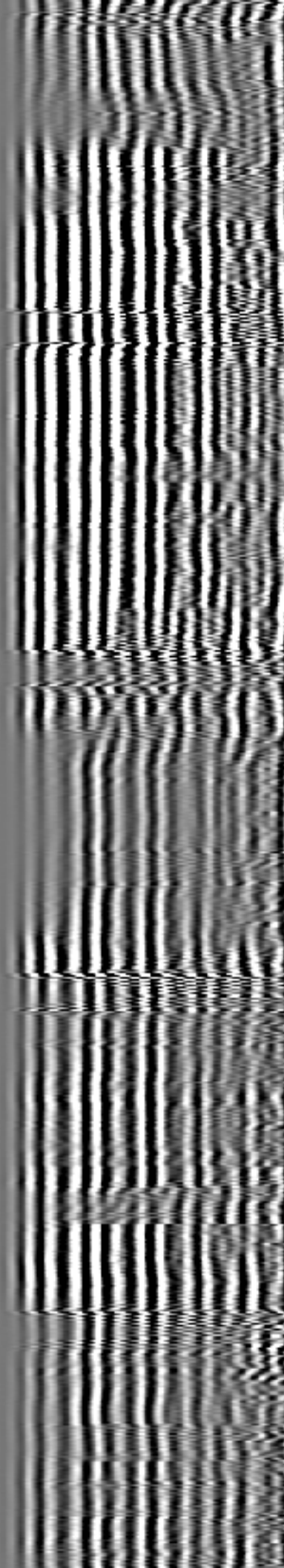
182

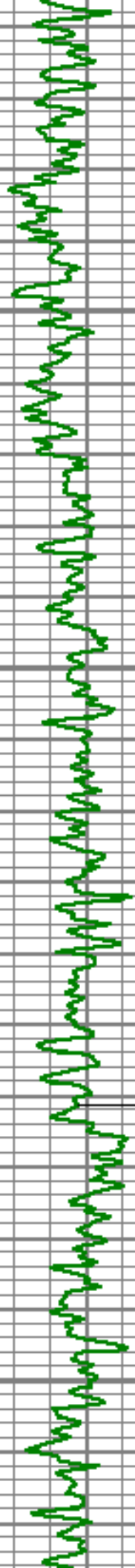
4950

183

5000

184





5050

186

5100

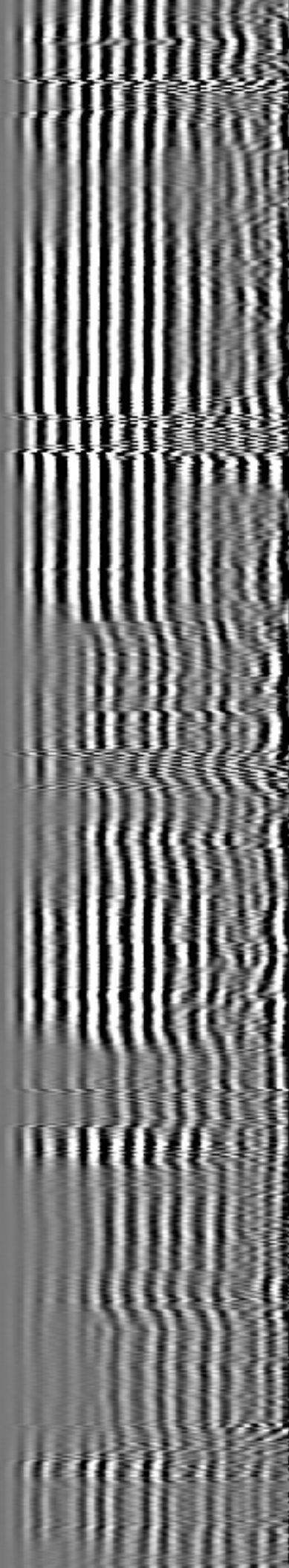
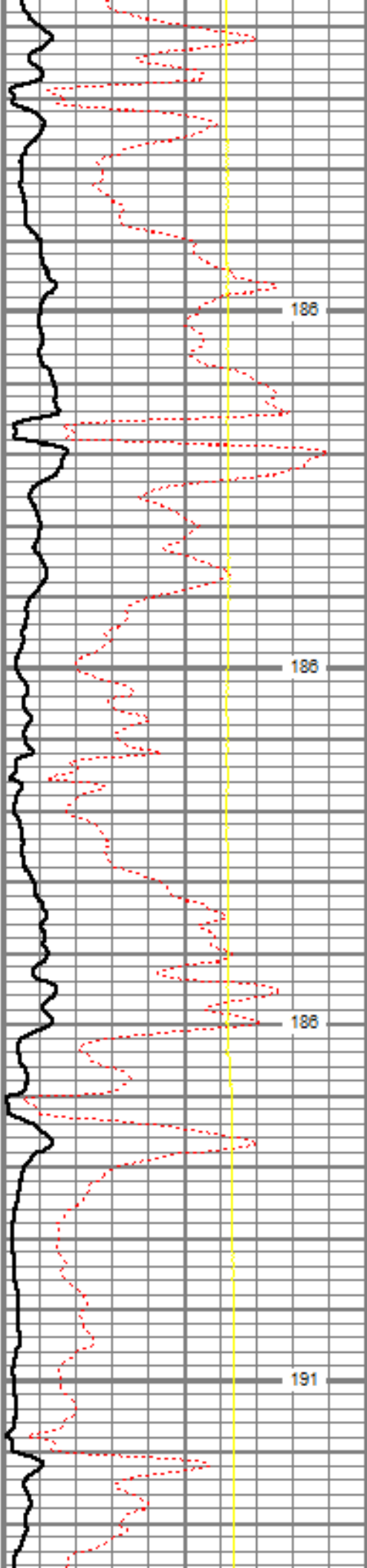
186

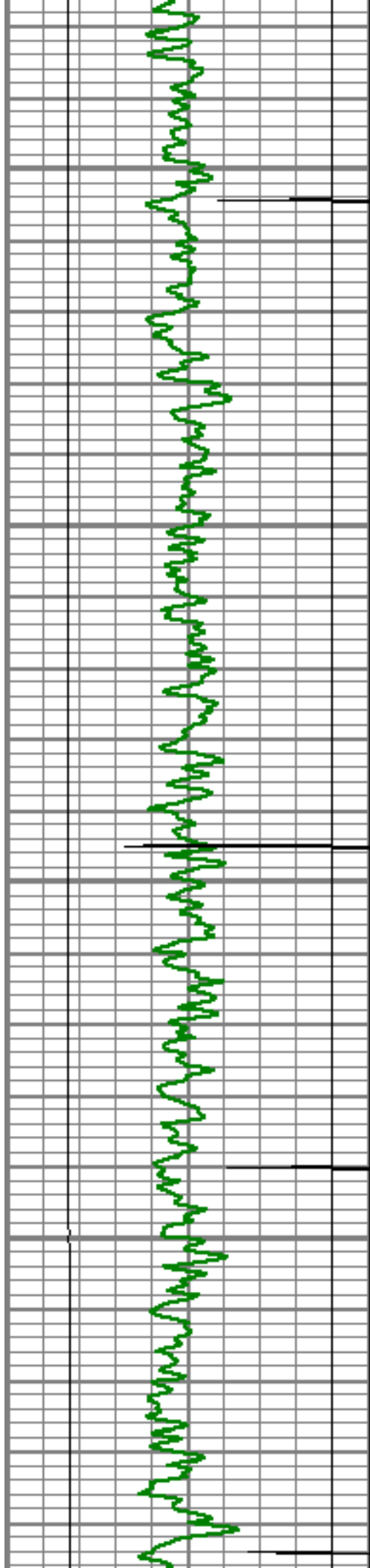
5150

186

5200

191





5250

192

5300

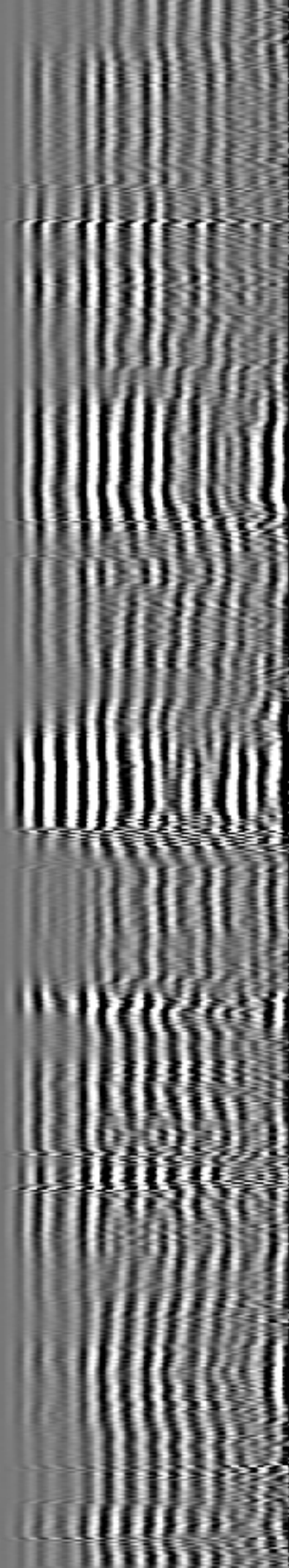
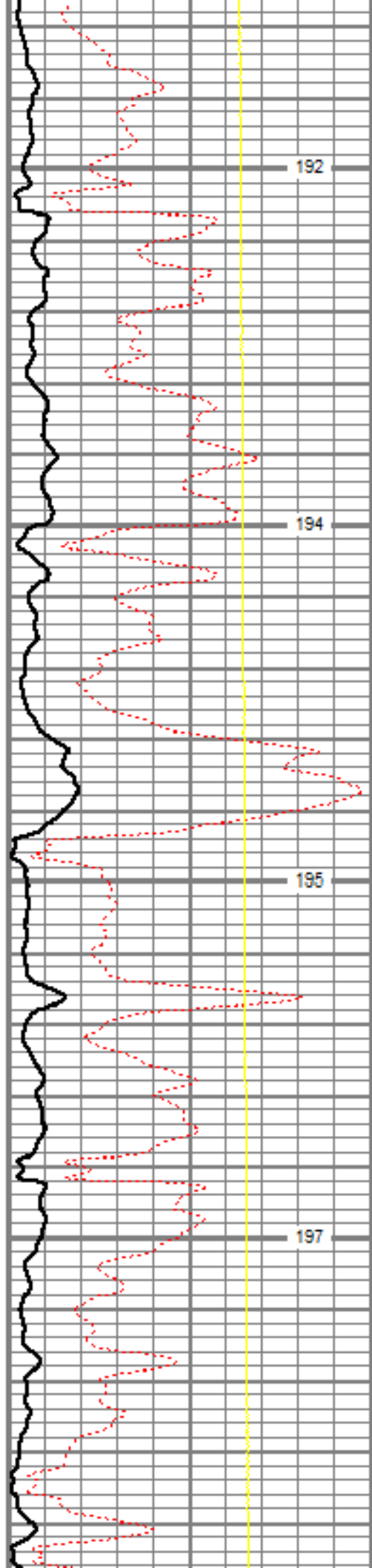
194

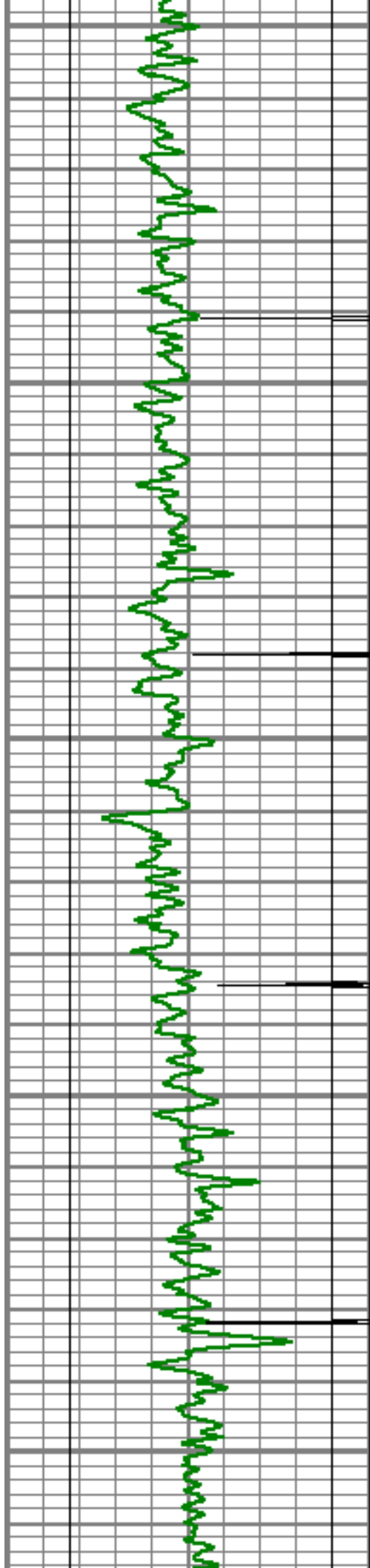
5350

195

5400

197





5450

5500

5550

5600

5650

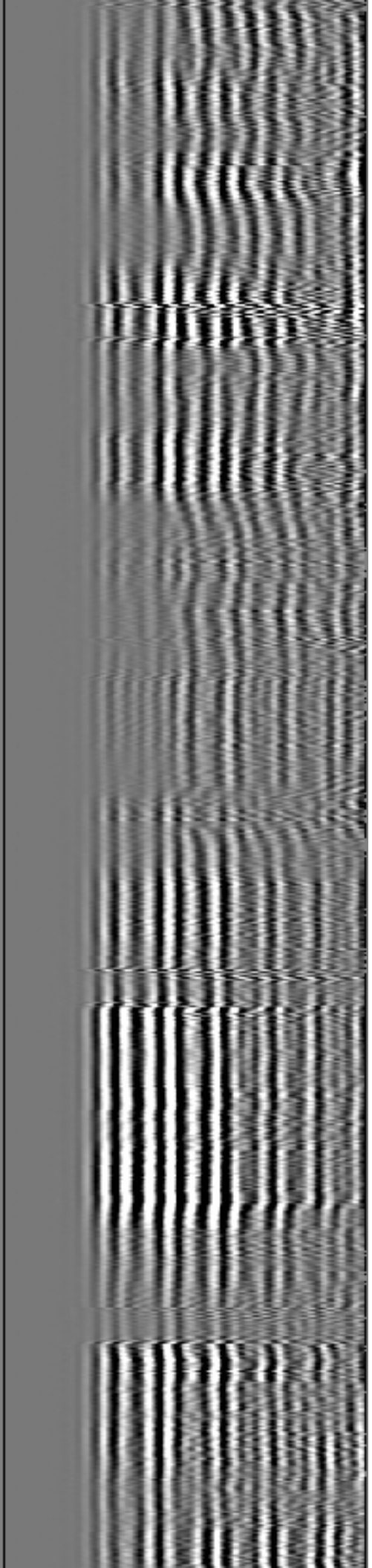
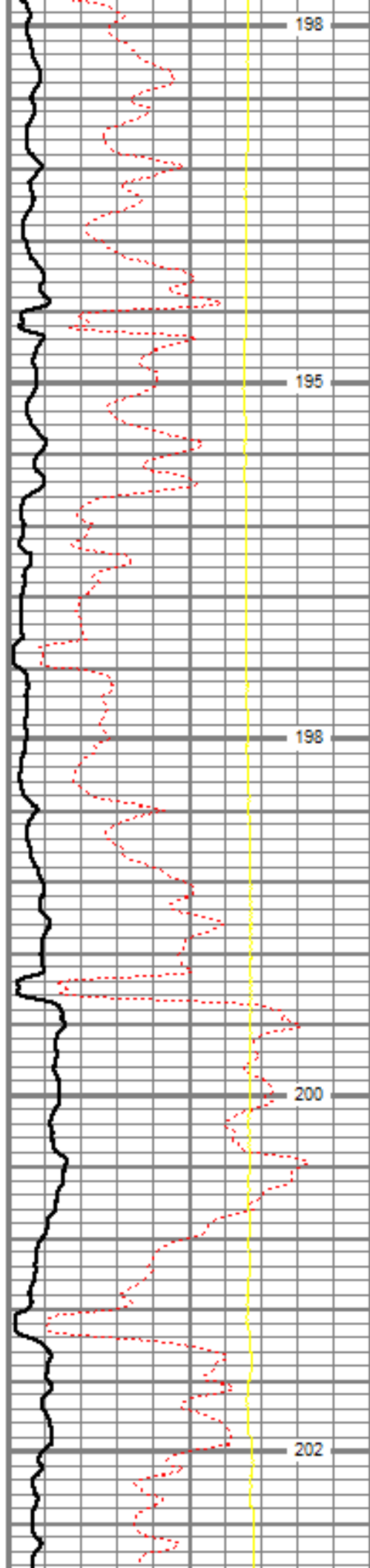
198

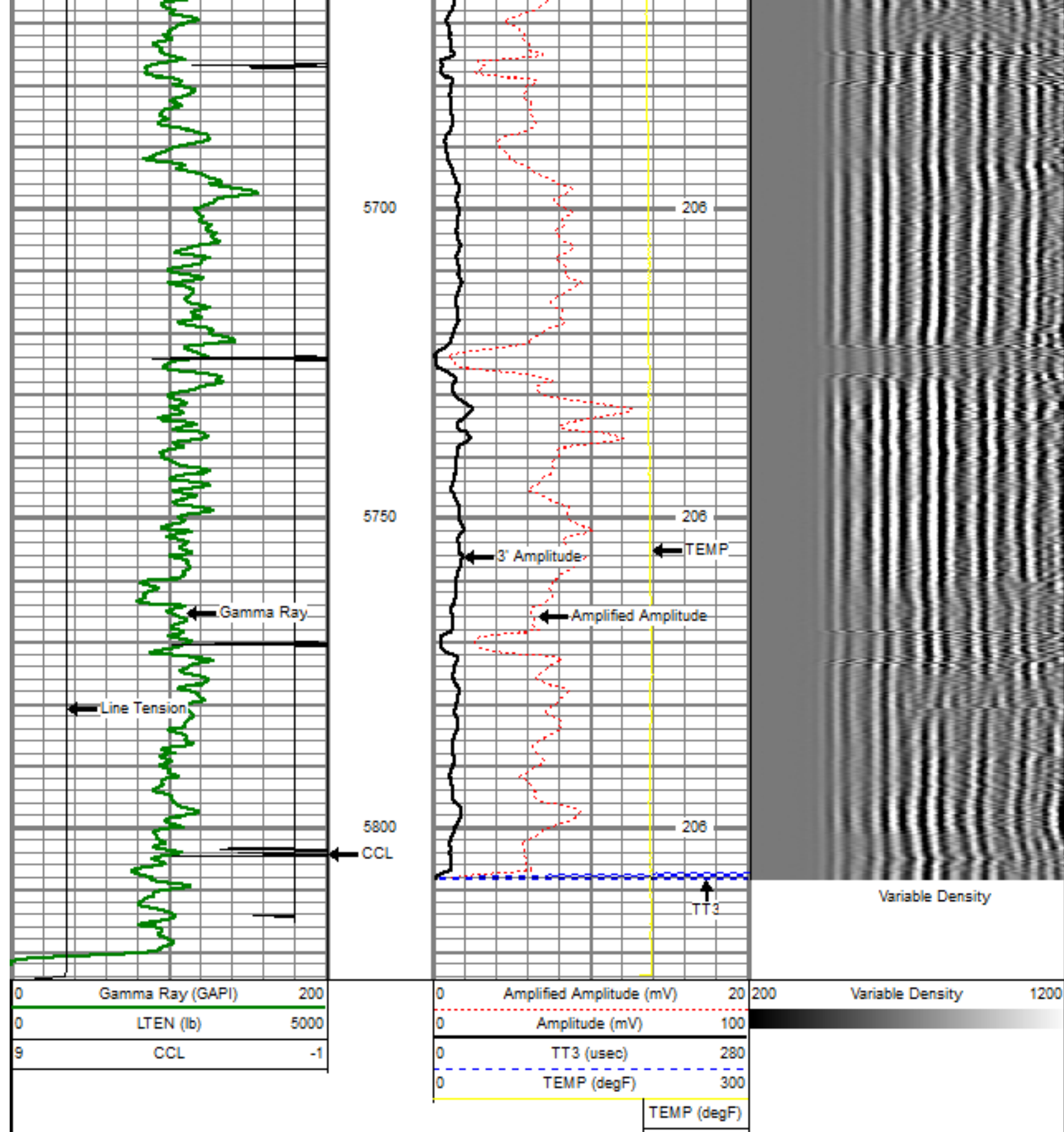
195

198


200

202





Sensor	Offset (ft)	Schematic	Description	Len (ft)	OD (in)	Wt (lb)
			titan Titan Cable Head Go Pin.	1.02	1.44	1.50
			Centralizer-Probe (CENT-PROBE-1) Probe Bowspring Centralizer	2.88	2.75	10.00

WVF3	17.25		CBL-PRB_CBL_DIGITAL (PRB_CBL_DIG_28.77 1) Probe 2.75" Dual Receiver Bond	2.75	60.00
WVF5	16.25				
			Centralizer-Probe (CENT-PROBE-2) Probe Bowspring Centralizer	2.88	10.00
CCL	8.58		CCL-PRB_CCL_6MAG (PRB_CCL_6MAG_02.71) Probe 6 Magnet CCL	2.75	
			GR-PROBE_GR (PRB_GR_275_01) Probe stand alone Gamma Ray Tool	4.54	30.00
GR	3.63				
			TEMP-Comprobe (TEMP_CMPRB_1375_01) Positive pulse Temp tool	2.88	15.00
TEMP	0.17				
Dataset: french lake 3-63-22-1h.db: field/well/run1/pass2.1 Total Length: 25.67 ft Total Weight: 126.50 lb O.D. 2.75 in					



Company MARATHON OIL COMPANY
 Well FRENCH LAKE 3-63-22-1H
 Field WATTENBERG
 County WELD
 State COLORADO

