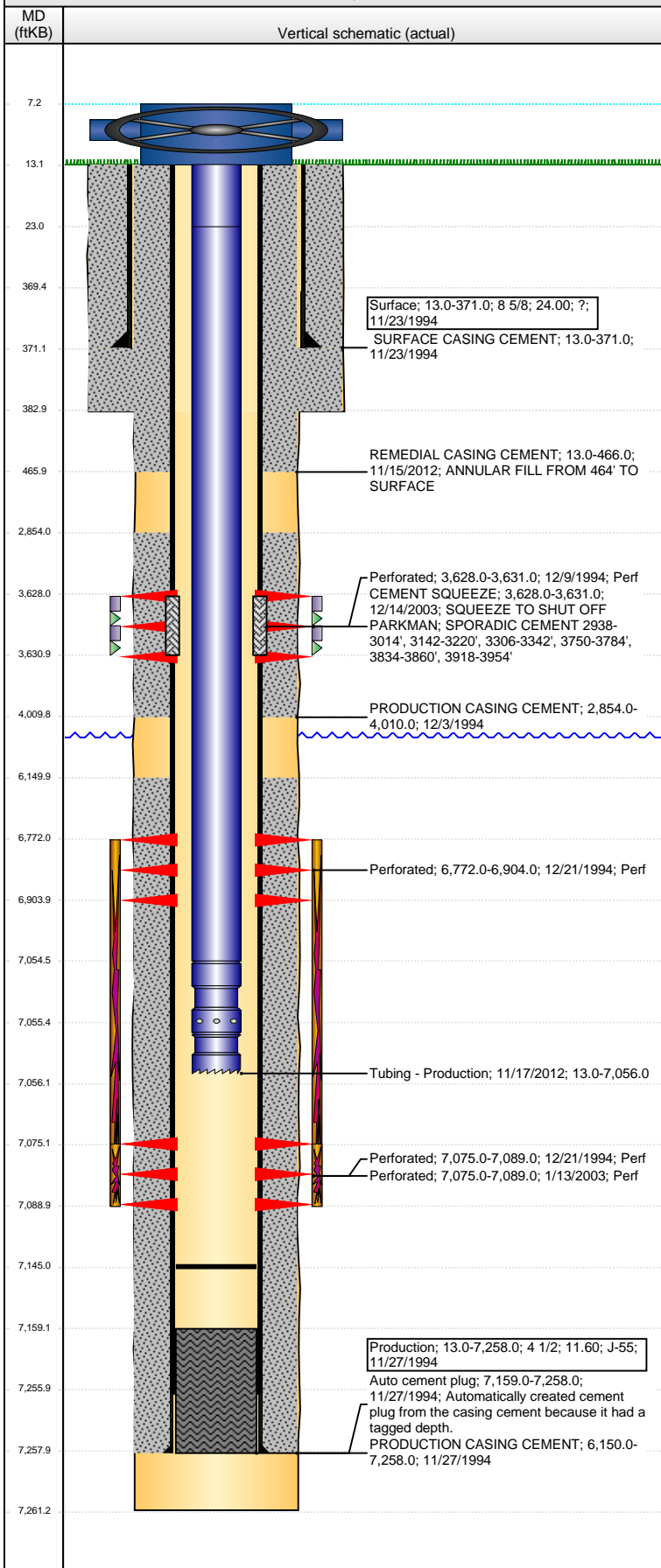


**Well Name: BICKLING E21-15**

VERTICAL - ORIGINAL HOLE, 10/10/2013 10:30:29 AM



## Well Header

API 05-123-18711	Business Unit WATTENBERG	District 15	Well Config VERTICAL
Original KB Elevation (ft) 4,720.00	KB - GL / MSL (ftKB) 13.00	Spud Date 11/23/1994	P & A Date

## Comment

TD DISCREPANCY IN FILE, TD REPORTED AS 7260' & 7261'

## Directions To Well

## Congressional Location

Quarter 1	Quarter 2	Quarter 3	Quarter 4	Section	Township	Twnshp N...	Range	Rng E/W Dir
		SW	SE	21	6	N	65	W

## Bottom Hole Location

North-South Distance (ft)	From N or S Line	East-West Distance (ft)	From E or W Line
---------------------------	------------------	-------------------------	------------------

## Plug Back Total Depths

Date	Depth (ftKB)	Method	Com
11/26/1994	7,231.0	CASING TALLY	FLOAT SHOE
12/8/1994	7,158.0	CASED HOLE LOG	DEPTH - LOGGER ON CBL
12/1/1995	7,231.0	TAG	C/O TO FILL @7231'
1/12/2003	7,214.0	TAG	TAGGED FILL @7214'
11/12/2012	7,145.0	TAG	

## Wellbore Sections

Section Des	Size (in)	Act Top (ftKB)	Act Btm (ftKB)
SURFACE	12 1/4	13.0	383.0
PRODUCTION	7 7/8	383.0	7,261.0

## Zone Statuses

Zone Name	Status Date	Status	Job
CODELL	1/12/1995	PR	DRILLING/COMPLETION - ORIGINAL, 11/23/1994 00:00
CODELL	1/16/2003	PR	RE-FRAC, 1/11/2003 00:00
NIOBRARA	1/12/1995	PR	DRILLING/COMPLETION - ORIGINAL, 11/23/1994 00:00
PARKMAN	12/14/1994	AB	DRILLING/COMPLETION - ORIGINAL, 11/23/1994 00:00

## Casing Strings

### Surface, 371.0ftKB

Casing Description	Run Date	OD (in)	Wt/Len (l...)	Grade	Top (ftKB)	MD (ftKB)
Surface	11/23/1994	8 5/8	24.00	?	13.0	371.0

### Production, 7,258.0ftKB

Casing Description	Run Date	OD (in)	Wt/Len (l...)	Grade	Top (ftKB)	MD (ftKB)
Production	11/27/1994	4 1/2	11.60	J-55	13.0	7,258.0

## Cement

Description	Top Depth (ftKB)	Bottom Depth (ftKB)
SURFACE CASING CEMENT	13.0	371.0
PRODUCTION CASING CEMENT	6,150.0	7,258.0
PRODUCTION CASING CEMENT	2,854.0	4,010.0
CEMENT SQUEEZE	3,628.0	3,631.0
REMEDIAL CASING CEMENT	13.0	466.0

## Tubing Components

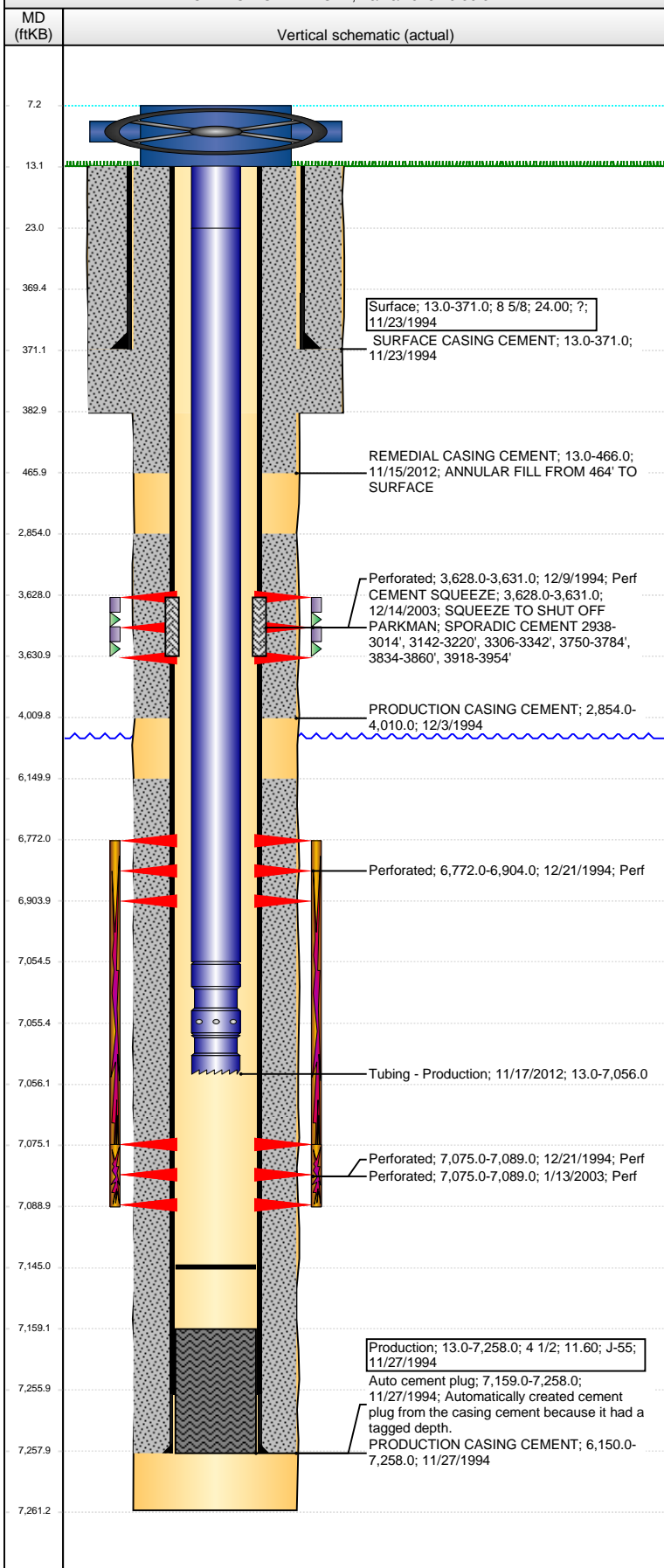
Item Des	OD (in)	Wt (lb/ft)	Grade	Jts	Len (ft)	Btm (ftKB)	Btm (TVD) (ftKB)
Tubing	2 3/8	4.70	J-55	1	10.00	23.0	
Tubing	2 3/8	4.70	J-55	221	7,031.38	7,054.4	
Pump Seating Nipple	2 3/8	1.10		1	1.20	7,055.6	
Notched collar	2 3/8			1	0.40	7,056.0	

## Perforation Data

Zone	Bnch/St g	Entered Shot Total	Top (ftKB)	Btm (ftKB)	Date
PARKMAN, ORIGINAL HOLE		13	3,628.00	3,631.00	12/9/1994
NIOBRARA, ORIGINAL HOLE		6	6,772.00	6,904.00	12/21/1994
CODELL, ORIGINAL HOLE		13	7,075.00	7,089.00	12/21/1994
CODELL, ORIGINAL HOLE		56	7,075.00	7,089.00	1/13/2003

**Well Name: BICKLING E21-15**

VERTICAL - ORIGINAL HOLE, 10/10/2013 10:30:31 AM



Stimulations & Treatments				
Date	Zone	Primary Job Type		
12/13/1994	PARKMAN, ORIGINAL HOLE	DRILLING/COMPLETION - ORIGINAL		
Technical Result		Tech Result Details	Tech Result Note	
Comment				
Date	Zone	Primary Job Type		
1/4/1995	NIORARA-CODELL, ORIGINAL HOLE	DRILLING/COMPLETION - ORIGINAL		
Technical Result		Tech Result Details	Tech Result Note	
Comment				
LIMITED ENTRY				
Date	Zone	Primary Job Type		
1/15/2003	CODELL, ORIGINAL HOLE	RE-FRAC		
Technical Result		Tech Result Details	Tech Result Note	
Comment				
Other In Hole				
Run Date	Des	OD (in)	Top (ftKB)	Btm (ftKB)
Logs				
Date	Type	Top (ftKB)	Btm (ftKB)	
11/27/1994	COMPENSATED DENSITY	3,100.0	7,270.0	
11/27/1994	INDUCTION	3,100.0	7,270.0	
12/8/1994	CEMENT BOND	2,600.0	7,158.0	
11/16/2012	CBL/CCL/GR	371.0	999.0	