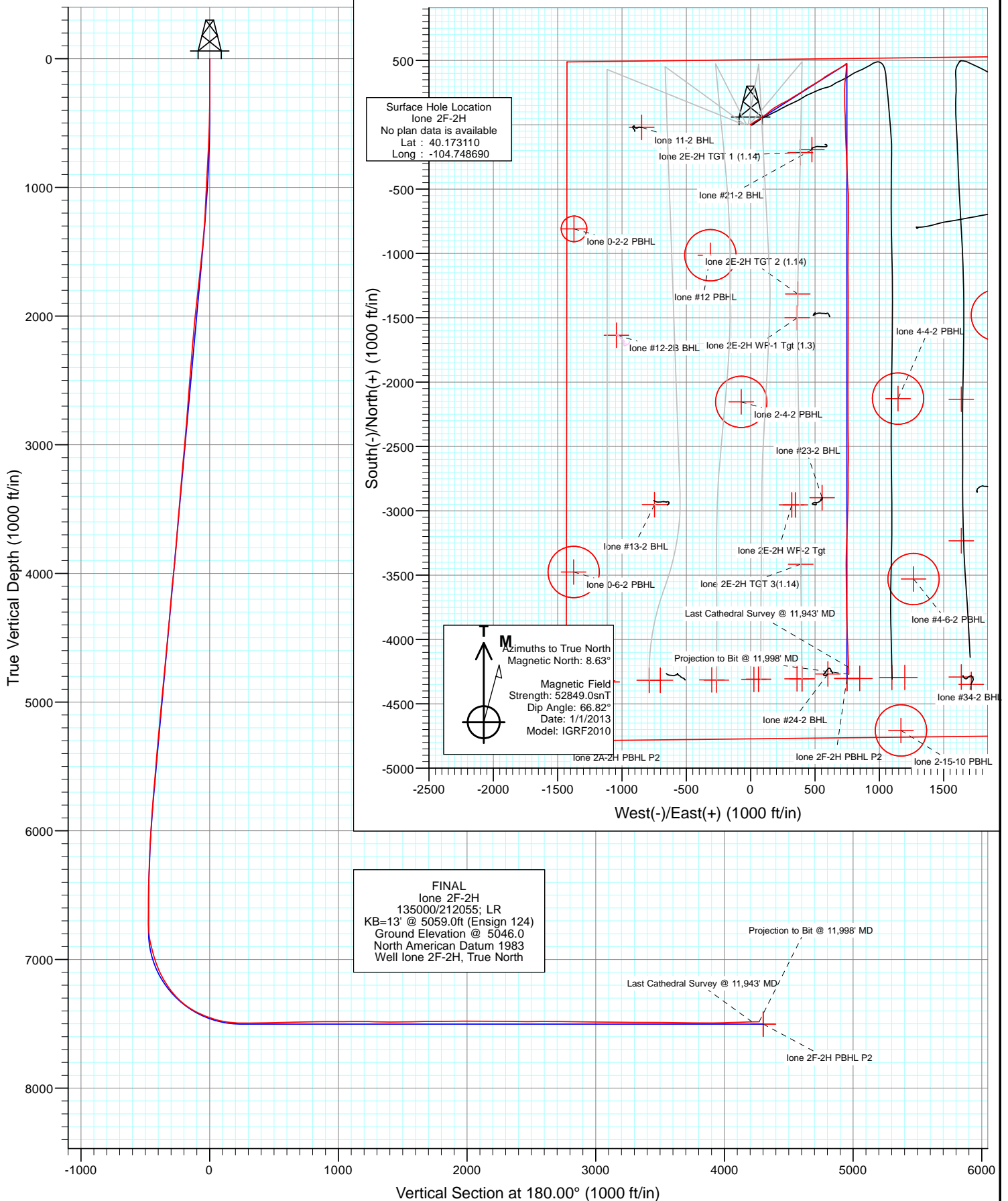


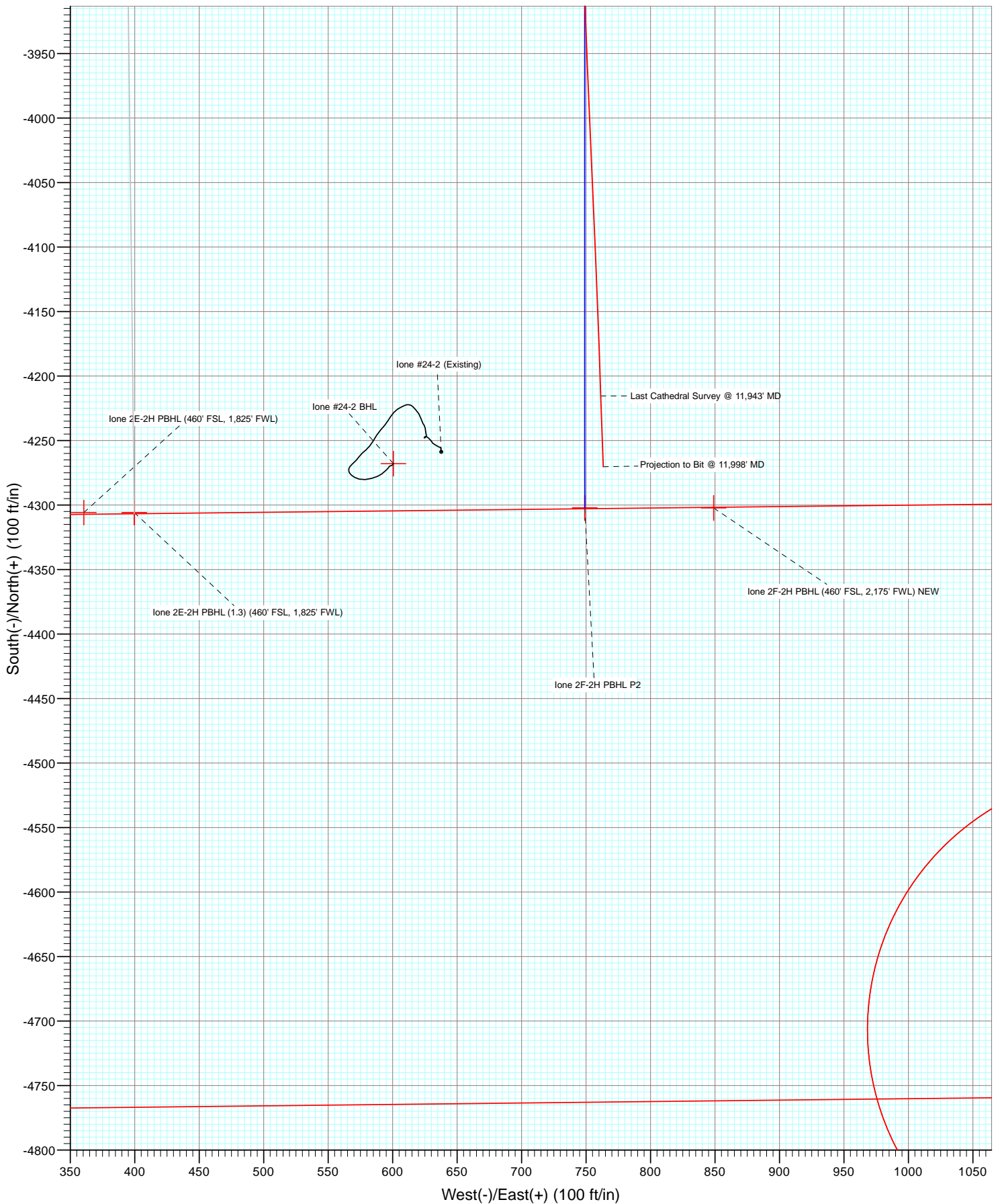


Project: DJ Wattenberg
Site: NWNE S2-T2N-R66W (lone)
Well: lone 2F-2H
Wellbore: HZ
Design: FINAL





Project: DJ Wattenberg
Site: NWN S2-T2N-R66W (Ione)
Well: Ione 2F-2H
Wellbore: HZ
Design: FINAL



Cathedral Energy Services

Survey Report

Company:	EnCana Oil & Gas (USA) Inc	Local Co-ordinate Reference:	Well lone 2F-2H
Project:	DJ Wattenberg	TVD Reference:	KB=13' @ 5059.0ft (Ensign 124)
Site:	NWNE S2-T2N-R66W (lone)	MD Reference:	KB=13' @ 5059.0ft (Ensign 124)
Well:	lone 2F-2H	North Reference:	True
Wellbore:	HZ	Survey Calculation Method:	Minimum Curvature
Design:	HZ	Database:	USA EDM 5000 Multi Users DB

Project	DJ Wattenberg		
Map System:	US State Plane 1983	System Datum:	Mean Sea Level
Geo Datum:	North American Datum 1983		
Map Zone:	Colorado Northern Zone		

Site		NWNE S2-T2N-R66W (lone)			
Site Position:		Northing:	1,306,798.50 ft	Latitude:	40.173110
From:	Lat/Long	Easting:	3,209,901.52 ft	Longitude:	-104.748870
Position Uncertainty:	0.0 ft	Slot Radius:	13.200 in	Grid Convergence:	0.49 °

Well	lone 2F-2H					
Well Position	+N/-S	0.0 ft	Northing:	1,306,798.88 ft	Latitude:	40.173110
	+E/-W	0.0 ft	Easting:	3,209,951.82 ft	Longitude:	-104.748690
Position Uncertainty		0.0 ft	Wellhead Elevation:	ft	Ground Level:	5,046.0 ft

Wellbore	HZ				
Magnetics	Model Name	Sample Date	Declination (°)	Dip Angle (°)	Field Strength (nT)
	IGRF2010	1/1/2013	8.63	66.82	52,849

Design	HZ				
Audit Notes:					
Version:	1.0	Phase:	ACTUAL	Tie On Depth:	0.0
Vertical Section:	Depth From (TVD)	+N/-S	+E/-W	Direction	
	(ft)	(ft)	(ft)	(°)	
	0.0	0.0	0.0	180.00	

Survey Program	Date	1/14/2013			
From (ft)	To (ft)	Survey (Wellbore)	Tool Name	Description	
104.0	11,998.0	Survey #1 (HZ)	MWD	Geolink MWD	

Survey									
Measured Depth (ft)	Inclination (°)	Azimuth (°)	Vertical Depth (ft)	+N/-S (ft)	+E/-W (ft)	Vertical Section (ft)	Dogleg Rate (°/100ft)	Build Rate (°/100ft)	Formations / Comments
0.0	0.00	0.00	0.0	0.0	0.0	0.0	0.00	0.00	
104.0	0.30	174.40	104.0	-0.3	0.0	0.3	0.29	0.29	
166.0	0.20	214.00	166.0	-0.5	0.0	0.5	0.31	-0.16	
259.0	0.00	202.70	259.0	-0.7	-0.1	0.7	0.22	-0.22	
352.0	0.70	29.90	352.0	-0.2	0.2	0.2	0.75	0.75	
445.0	1.60	51.60	445.0	1.1	1.5	-1.1	1.06	0.97	
538.0	2.60	58.60	537.9	3.0	4.3	-3.0	1.11	1.08	
631.0	3.50	45.30	630.8	6.1	8.1	-6.1	1.22	0.97	
724.0	4.50	47.00	723.6	10.6	12.8	-10.6	1.08	1.08	
817.0	5.00	53.00	816.2	15.5	18.7	-15.5	0.76	0.54	
910.0	5.50	53.00	908.8	20.7	25.5	-20.7	0.54	0.54	
995.0	5.60	59.20	993.4	25.2	32.3	-25.2	0.71	0.12	
1,107.0	5.20	62.30	1,105.0	30.4	41.5	-30.4	0.44	-0.36	

Cathedral Energy Services

Survey Report

Company:	EnCana Oil & Gas (USA) Inc	Local Co-ordinate Reference:	Well lone 2F-2H
Project:	DJ Wattenberg	TVD Reference:	KB=13' @ 5059.0ft (Ensign 124)
Site:	NWNE S2-T2N-R66W (lone)	MD Reference:	KB=13' @ 5059.0ft (Ensign 124)
Well:	lone 2F-2H	North Reference:	True
Wellbore:	HZ	Survey Calculation Method:	Minimum Curvature
Design:	HZ	Database:	USA EDM 5000 Multi Users DB

Survey									
Measured Depth (ft)	Inclination (°)	Azimuth (°)	Vertical Depth (ft)	+N/-S (ft)	+E/-W (ft)	Vertical Section (ft)	Dogleg Rate (°/100ft)	Build Rate (°/100ft)	Formations / Comments
1,200.0	6.40	60.20	1,197.5	34.9	49.7	-34.9	1.31	1.29	
1,293.0	8.10	61.70	1,289.7	40.6	60.0	-40.6	1.84	1.83	
1,386.0	8.80	58.60	1,381.7	47.4	71.8	-47.4	0.90	0.75	
1,479.0	10.10	54.80	1,473.5	55.8	84.6	-55.8	1.55	1.40	
1,572.0	10.10	54.70	1,565.0	65.3	97.9	-65.3	0.02	0.00	
1,664.0	10.30	53.80	1,655.6	74.8	111.1	-74.8	0.28	0.22	
1,757.0	10.50	53.10	1,747.0	84.8	124.6	-84.8	0.25	0.22	
1,849.0	9.70	49.30	1,837.6	94.9	137.2	-94.9	1.13	-0.87	
1,942.0	9.00	48.20	1,929.4	104.8	148.5	-104.8	0.78	-0.75	
2,037.0	8.40	51.80	2,023.3	114.1	159.5	-114.1	0.85	-0.63	
2,131.0	9.10	52.80	2,116.2	122.8	170.9	-122.8	0.76	0.74	
2,227.0	9.40	60.60	2,210.9	131.2	183.7	-131.2	1.34	0.31	
2,322.0	8.50	56.90	2,304.8	138.9	196.4	-138.9	1.12	-0.95	
2,417.0	9.40	60.60	2,398.6	146.5	209.0	-146.5	1.12	0.95	
2,512.0	9.00	58.00	2,492.4	154.3	222.1	-154.3	0.61	-0.42	
2,607.0	9.40	65.20	2,586.2	161.5	235.4	-161.5	1.28	0.42	
2,702.0	8.60	62.90	2,680.0	168.0	248.8	-168.0	0.92	-0.84	
2,796.0	9.50	63.10	2,772.8	174.7	262.0	-174.7	0.96	0.96	
2,892.0	10.40	62.30	2,867.4	182.3	276.7	-182.3	0.95	0.94	
2,986.0	10.30	59.50	2,959.9	190.5	291.4	-190.5	0.55	-0.11	
3,081.0	9.90	58.00	3,053.4	199.1	305.7	-199.1	0.50	-0.42	
3,176.0	9.30	57.20	3,147.1	207.6	319.1	-207.6	0.65	-0.63	
3,271.0	8.80	57.20	3,240.9	215.7	331.6	-215.7	0.53	-0.53	
3,366.0	9.60	61.00	3,334.7	223.5	344.7	-223.5	1.06	0.84	
3,461.0	9.10	57.50	3,428.4	231.4	357.9	-231.4	0.80	-0.53	
3,556.0	9.80	60.90	3,522.1	239.3	371.3	-239.3	0.94	0.74	
3,651.0	7.80	54.30	3,616.0	247.0	383.6	-247.0	2.36	-2.11	
3,746.0	9.60	62.90	3,709.9	254.4	395.9	-254.4	2.33	1.89	
3,841.0	8.10	55.00	3,803.8	261.8	408.5	-261.8	2.03	-1.58	
3,936.0	8.50	53.00	3,897.8	269.9	419.5	-269.9	0.52	0.42	
4,031.0	10.40	53.60	3,991.5	279.2	432.1	-279.2	2.00	2.00	
4,126.0	10.40	55.80	4,084.9	289.1	446.1	-289.1	0.42	0.00	
4,221.0	10.60	63.00	4,178.3	297.9	460.9	-297.9	1.40	0.21	
4,317.0	10.30	61.90	4,272.7	306.0	476.4	-306.0	0.38	-0.31	
4,412.0	9.90	59.80	4,366.3	314.1	490.9	-314.1	0.57	-0.42	
4,507.0	8.40	53.00	4,460.1	322.4	503.5	-322.4	1.94	-1.58	
4,602.0	10.10	60.80	4,553.8	330.6	516.3	-330.6	2.22	1.79	
4,697.0	9.20	57.70	4,647.5	338.7	530.0	-338.7	1.09	-0.95	
4,792.0	10.80	56.60	4,741.0	347.7	543.9	-347.7	1.70	1.68	
4,887.0	10.60	54.70	4,834.4	357.6	558.4	-357.6	0.43	-0.21	
4,982.0	9.40	50.70	4,927.9	367.6	571.6	-367.6	1.46	-1.26	
5,077.0	9.90	60.80	5,021.6	376.5	584.7	-376.5	1.86	0.53	
5,172.0	8.60	56.50	5,115.4	384.4	597.8	-384.4	1.55	-1.37	
5,266.0	9.50	57.20	5,208.2	392.5	610.1	-392.5	0.96	0.96	
5,362.0	10.30	63.30	5,302.8	400.6	624.5	-400.6	1.37	0.83	
5,457.0	9.20	59.90	5,396.4	408.3	638.6	-408.3	1.31	-1.16	
5,552.0	9.30	58.20	5,490.2	416.1	651.7	-416.1	0.31	0.11	
5,647.0	10.40	62.40	5,583.8	424.1	665.8	-424.1	1.38	1.16	
5,742.0	8.80	56.70	5,677.4	432.1	679.5	-432.1	1.96	-1.68	
5,837.0	9.30	58.70	5,771.2	440.1	692.1	-440.1	0.62	0.53	
5,932.0	7.60	56.20	5,865.2	447.5	703.9	-447.5	1.83	-1.79	
6,028.0	7.00	60.10	5,960.4	454.0	714.3	-454.0	0.81	-0.62	
6,123.0	5.70	56.60	6,054.8	459.5	723.2	-459.5	1.43	-1.37	

Cathedral Energy Services

Survey Report

Company:	EnCana Oil & Gas (USA) Inc	Local Co-ordinate Reference:	Well lone 2F-2H
Project:	DJ Wattenberg	TVD Reference:	KB=13' @ 5059.0ft (Ensign 124)
Site:	NWNE S2-T2N-R66W (lone)	MD Reference:	KB=13' @ 5059.0ft (Ensign 124)
Well:	lone 2F-2H	North Reference:	True
Wellbore:	HZ	Survey Calculation Method:	Minimum Curvature
Design:	HZ	Database:	USA EDM 5000 Multi Users DB

Survey									
Measured Depth (ft)	Inclination (°)	Azimuth (°)	Vertical Depth (ft)	+N/-S (ft)	+E/-W (ft)	Vertical Section (ft)	Dogleg Rate (°/100ft)	Build Rate (°/100ft)	Formations / Comments
6,217.0	5.30	60.40	6,148.4	464.2	730.9	-464.2	0.58	-0.43	
6,313.0	3.80	53.50	6,244.1	468.3	737.3	-468.3	1.66	-1.56	
6,408.0	2.50	52.40	6,339.0	471.4	741.5	-471.4	1.37	-1.37	
6,503.0	1.80	352.80	6,433.9	474.2	742.9	-474.2	2.34	-0.74	
6,598.0	1.10	265.20	6,528.9	475.6	741.8	-475.6	2.18	-0.74	
6,693.0	1.20	120.40	6,623.9	475.0	741.8	-475.0	2.31	0.11	
6,756.0	1.10	113.90	6,686.9	474.4	742.9	-474.4	0.26	-0.16	
6,788.0	1.00	111.30	6,718.9	474.2	743.5	-474.2	0.35	-0.31	
6,820.0	1.90	145.60	6,750.8	473.6	744.0	-473.6	3.79	2.81	
6,851.0	3.60	168.40	6,781.8	472.3	744.5	-472.3	6.42	5.48	
6,883.0	6.50	178.40	6,813.7	469.5	744.8	-469.5	9.44	9.06	
6,915.0	9.50	180.40	6,845.4	465.0	744.8	-465.0	9.41	9.37	
6,946.0	12.40	179.90	6,875.8	459.1	744.8	-459.1	9.36	9.35	
6,978.0	14.10	180.70	6,906.9	451.8	744.7	-451.8	5.34	5.31	
7,010.0	15.30	182.80	6,937.9	443.7	744.5	-443.7	4.10	3.75	
7,041.0	16.40	184.30	6,967.7	435.2	744.0	-435.2	3.79	3.55	
7,072.0	17.60	185.00	6,997.4	426.2	743.2	-426.2	3.93	3.87	
7,104.0	19.30	184.50	7,027.7	416.1	742.4	-416.1	5.34	5.31	
7,136.0	21.60	185.00	7,057.7	405.0	741.5	-405.0	7.21	7.19	
7,167.0	24.40	186.30	7,086.2	392.9	740.3	-392.9	9.18	9.03	
7,199.0	27.30	185.70	7,115.0	379.0	738.8	-379.0	9.10	9.06	
7,231.0	29.60	185.90	7,143.2	363.9	737.3	-363.9	7.19	7.19	
7,262.0	30.40	186.80	7,170.0	348.5	735.5	-348.5	2.96	2.58	
7,294.0	32.60	184.40	7,197.3	331.8	733.9	-331.8	7.91	6.87	
7,325.0	35.50	184.00	7,223.0	314.5	732.7	-314.5	9.38	9.35	
7,357.0	37.70	182.70	7,248.7	295.5	731.5	-295.5	7.29	6.87	
7,389.0	40.70	181.40	7,273.5	275.3	730.8	-275.3	9.72	9.37	
7,420.0	44.30	180.60	7,296.3	254.3	730.5	-254.3	11.74	11.61	
7,452.0	47.60	180.60	7,318.6	231.3	730.2	-231.3	10.31	10.31	
7,484.0	50.50	179.20	7,339.5	207.2	730.3	-207.2	9.65	9.06	
7,515.0	53.90	179.00	7,358.5	182.7	730.7	-182.7	10.98	10.97	
7,547.0	57.20	178.70	7,376.6	156.3	731.2	-156.3	10.34	10.31	
7,579.0	59.60	177.90	7,393.4	129.1	732.0	-129.1	7.80	7.50	
7,610.0	62.50	177.10	7,408.4	102.0	733.2	-102.0	9.62	9.35	
7,642.0	64.90	177.30	7,422.6	73.3	734.6	-73.3	7.52	7.50	
7,674.0	67.60	178.30	7,435.5	44.0	735.7	-44.0	8.91	8.44	
7,705.0	69.50	179.50	7,446.8	15.2	736.3	-15.2	7.11	6.13	
7,737.0	72.00	179.10	7,457.3	-15.0	736.6	15.0	7.90	7.81	
7,769.0	73.70	178.00	7,466.8	-45.6	737.4	45.6	6.25	5.31	
7,798.0	76.40	178.10	7,474.3	-73.6	738.4	73.6	9.32	9.31	
7,830.0	79.50	177.90	7,480.9	-104.8	739.5	104.8	9.71	9.69	
7,862.0	82.20	177.40	7,486.0	-136.4	740.8	136.4	8.58	8.44	
7,893.0	83.80	177.60	7,489.8	-167.1	742.1	167.1	5.20	5.16	
7,925.0	85.80	177.70	7,492.7	-199.0	743.4	199.0	6.26	6.25	
7,957.0	87.90	178.00	7,494.5	-230.9	744.6	230.9	6.63	6.56	
7,975.0	88.70	178.20	7,495.0	-248.9	745.2	248.9	4.58	4.44	
8,042.0	91.10	177.70	7,495.1	-315.8	747.6	315.8	3.66	3.58	
8,105.0	91.80	177.00	7,493.5	-378.8	750.5	378.8	1.57	1.11	
8,169.0	91.00	176.90	7,492.0	-442.6	753.9	442.6	1.26	-1.25	
8,232.0	90.40	176.70	7,491.2	-505.5	757.4	505.5	1.00	-0.95	
8,295.0	91.70	178.20	7,490.0	-568.5	760.2	568.5	3.15	2.06	
8,359.0	91.70	180.00	7,488.1	-632.4	761.2	632.4	2.81	0.00	
8,422.0	91.30	180.40	7,486.5	-695.4	761.0	695.4	0.90	-0.63	
8,485.0	91.10	180.20	7,485.2	-758.4	760.7	758.4	0.45	-0.32	

Cathedral Energy Services

Survey Report

Company:	EnCana Oil & Gas (USA) Inc	Local Co-ordinate Reference:	Well lone 2F-2H
Project:	DJ Wattenberg	TVD Reference:	KB=13' @ 5059.0ft (Ensign 124)
Site:	NWNE S2-T2N-R66W (lone)	MD Reference:	KB=13' @ 5059.0ft (Ensign 124)
Well:	lone 2F-2H	North Reference:	True
Wellbore:	HZ	Survey Calculation Method:	Minimum Curvature
Design:	HZ	Database:	USA EDM 5000 Multi Users DB

Survey									
Measured Depth (ft)	Inclination (°)	Azimuth (°)	Vertical Depth (ft)	+N/-S (ft)	+E/-W (ft)	Vertical Section (ft)	Dogleg Rate (°/100ft)	Build Rate (°/100ft)	Formations / Comments
8,549.0	90.50	181.40	7,484.3	-822.4	759.8	822.4	2.10	-0.94	
8,612.0	90.20	180.90	7,483.9	-885.4	758.5	885.4	0.93	-0.48	
8,707.0	90.20	180.50	7,483.6	-980.4	757.4	980.4	0.42	0.00	
8,771.0	90.60	180.10	7,483.1	-1,044.4	757.0	1,044.4	0.88	0.62	
8,834.0	90.70	180.30	7,482.4	-1,107.4	756.8	1,107.4	0.35	0.16	
8,897.0	89.60	179.00	7,482.2	-1,170.3	757.2	1,170.3	2.70	-1.75	
8,961.0	89.40	179.30	7,482.8	-1,234.3	758.1	1,234.3	0.56	-0.31	
9,024.0	88.30	180.00	7,484.1	-1,297.3	758.5	1,297.3	2.07	-1.75	
9,087.0	88.40	179.70	7,485.9	-1,360.3	758.7	1,360.3	0.50	0.16	
9,151.0	89.50	180.00	7,487.0	-1,424.3	758.9	1,424.3	1.78	1.72	
9,214.0	91.20	180.70	7,486.7	-1,487.3	758.5	1,487.3	2.92	2.70	
9,277.0	92.10	180.50	7,484.8	-1,550.2	757.8	1,550.2	1.46	1.43	
9,341.0	92.30	180.00	7,482.4	-1,614.2	757.5	1,614.2	0.84	0.31	
9,404.0	90.20	179.90	7,481.0	-1,677.2	757.6	1,677.2	3.34	-3.33	
9,468.0	89.70	179.30	7,481.1	-1,741.2	758.0	1,741.2	1.22	-0.78	
9,531.0	90.40	179.70	7,481.0	-1,804.2	758.6	1,804.2	1.28	1.11	
9,594.0	90.40	180.90	7,480.6	-1,867.2	758.3	1,867.2	1.90	0.00	
9,657.0	90.10	180.60	7,480.3	-1,930.2	757.4	1,930.2	0.67	-0.48	
9,721.0	90.00	180.40	7,480.2	-1,994.2	756.9	1,994.2	0.35	-0.16	
9,784.0	90.00	179.90	7,480.2	-2,057.2	756.7	2,057.2	0.79	0.00	
9,847.0	90.00	180.50	7,480.2	-2,120.2	756.5	2,120.2	0.95	0.00	
9,911.0	90.10	179.90	7,480.2	-2,184.2	756.3	2,184.2	0.95	0.16	
9,974.0	89.50	179.90	7,480.4	-2,247.2	756.4	2,247.2	0.95	-0.95	
10,038.0	89.10	180.00	7,481.2	-2,311.2	756.4	2,311.2	0.64	-0.62	
10,133.0	89.10	179.10	7,482.7	-2,406.1	757.2	2,406.1	0.95	0.00	
10,196.0	89.90	178.10	7,483.2	-2,469.1	758.7	2,469.1	2.03	1.27	
10,260.0	90.90	180.00	7,482.8	-2,533.1	759.8	2,533.1	3.35	1.56	
10,323.0	90.60	181.10	7,482.0	-2,596.1	759.2	2,596.1	1.81	-0.48	
10,387.0	89.30	180.40	7,482.0	-2,660.1	758.3	2,660.1	2.31	-2.03	
10,450.0	89.90	180.60	7,482.5	-2,723.1	757.8	2,723.1	1.00	0.95	
10,513.0	88.70	179.60	7,483.2	-2,786.1	757.7	2,786.1	2.48	-1.90	
10,576.0	89.30	180.00	7,484.3	-2,849.1	757.9	2,849.1	1.14	0.95	
10,640.0	88.80	180.60	7,485.4	-2,913.1	757.6	2,913.1	1.22	-0.78	
10,703.0	89.70	181.30	7,486.2	-2,976.0	756.5	2,976.0	1.81	1.43	
10,767.0	90.30	182.90	7,486.2	-3,040.0	754.2	3,040.0	2.67	0.94	
10,830.0	89.10	182.30	7,486.5	-3,102.9	751.3	3,102.9	2.13	-1.90	
10,893.0	89.10	182.00	7,487.5	-3,165.9	748.9	3,165.9	0.48	0.00	
10,957.0	89.20	182.30	7,488.5	-3,229.8	746.5	3,229.8	0.49	0.16	
11,020.0	89.60	181.60	7,489.1	-3,292.8	744.4	3,292.8	1.28	0.63	
11,084.0	89.50	180.60	7,489.6	-3,356.8	743.2	3,356.8	1.57	-0.16	
11,147.0	90.00	180.10	7,489.9	-3,419.8	742.8	3,419.8	1.12	0.79	
11,210.0	89.90	180.00	7,490.0	-3,482.8	742.7	3,482.8	0.22	-0.16	
11,274.0	89.60	179.10	7,490.2	-3,546.8	743.2	3,546.8	1.48	-0.47	
11,337.0	88.70	178.90	7,491.2	-3,609.7	744.3	3,609.7	1.46	-1.43	
11,400.0	89.10	179.80	7,492.4	-3,672.7	745.1	3,672.7	1.56	0.63	
11,463.0	89.60	179.60	7,493.1	-3,735.7	745.4	3,735.7	0.85	0.79	
11,526.0	89.40	178.80	7,493.7	-3,798.7	746.3	3,798.7	1.31	-0.32	
11,590.0	90.30	178.50	7,493.8	-3,862.7	747.8	3,862.7	1.48	1.41	
11,653.0	90.80	177.90	7,493.2	-3,925.7	749.7	3,925.7	1.24	0.79	
11,716.0	90.90	177.60	7,492.3	-3,988.6	752.2	3,988.6	0.50	0.16	
11,779.0	91.90	177.30	7,490.7	-4,051.5	755.0	4,051.5	1.66	1.59	
11,843.0	91.60	177.80	7,488.8	-4,115.4	757.8	4,115.4	0.91	-0.47	
11,938.0	91.80	178.10	7,486.0	-4,210.3	761.2	4,210.3	0.38	0.21	

Cathedral Energy Services

Survey Report

Company:	EnCana Oil & Gas (USA) Inc	Local Co-ordinate Reference:	Well lone 2F-2H
Project:	DJ Wattenberg	TVD Reference:	KB=13' @ 5059.0ft (Ensign 124)
Site:	NWNE S2-T2N-R66W (lone)	MD Reference:	KB=13' @ 5059.0ft (Ensign 124)
Well:	lone 2F-2H	North Reference:	True
Wellbore:	HZ	Survey Calculation Method:	Minimum Curvature
Design:	HZ	Database:	USA EDM 5000 Multi Users DB

Survey									
Measured Depth (ft)	Inclination (°)	Azimuth (°)	Vertical Depth (ft)	+N/-S (ft)	+E/-W (ft)	Vertical Section (ft)	Dogleg Rate (°/100ft)	Build Rate (°/100ft)	Formations / Comments
11,943.0	91.80	177.90	7,485.8	-4,215.3	761.3	4,215.3	4.00	0.00	Last Cathedral Survey @ 11,943' MD Projection to Bit @ 11,998' MD
11,998.0	91.80	177.90	7,484.1	-4,270.3	763.3	4,270.3	0.00	0.00	

Targets									
Target Name	Dip Angle (°)	Dip Dir. (°)	TVD (ft)	+N/-S (ft)	+E/-W (ft)	Northing (ft)	Easting (ft)	Latitude	Longitude
- hit/miss target									
- Shape									
lone 2F-2H PBHL P2	0.00	0.00	7,502.0	-4,302.1	749.0	1,302,503.26	3,210,737.24	40.161300	-104.746010
- survey misses target center by 39.3ft at 11998.0ft MD (7484.1 TVD, -4270.3 N, 763.3 E)									
- Point									
lone 2F-2H PBHL (460' I	0.00	0.00	7,502.0	-4,302.1	749.0	1,302,503.26	3,210,737.28	40.161300	-104.746010
- survey misses target center by 39.2ft at 11998.0ft MD (7484.1 TVD, -4270.3 N, 763.3 E)									
- Point									
lone 2F-2H PBHL (460' I	0.00	0.00	7,502.0	-4,302.1	849.0	1,302,504.11	3,210,837.24	40.161300	-104.745652
- survey misses target center by 93.1ft at 11998.0ft MD (7484.1 TVD, -4270.3 N, 763.3 E)									
- Point									

Survey Annotations					
Measured Depth (ft)	Vertical Depth (ft)	Local Coordinates			
		+N/-S (ft)	+E/-W (ft)	Comment	
11,943.0	7,485.8	-4,215.3	761.3	Last Cathedral Survey @ 11,943' MD	
11,998.0	7,484.1	-4,270.3	763.3	Projection to Bit @ 11,998' MD	

Checked By: _____ Approved By: _____ Date: _____