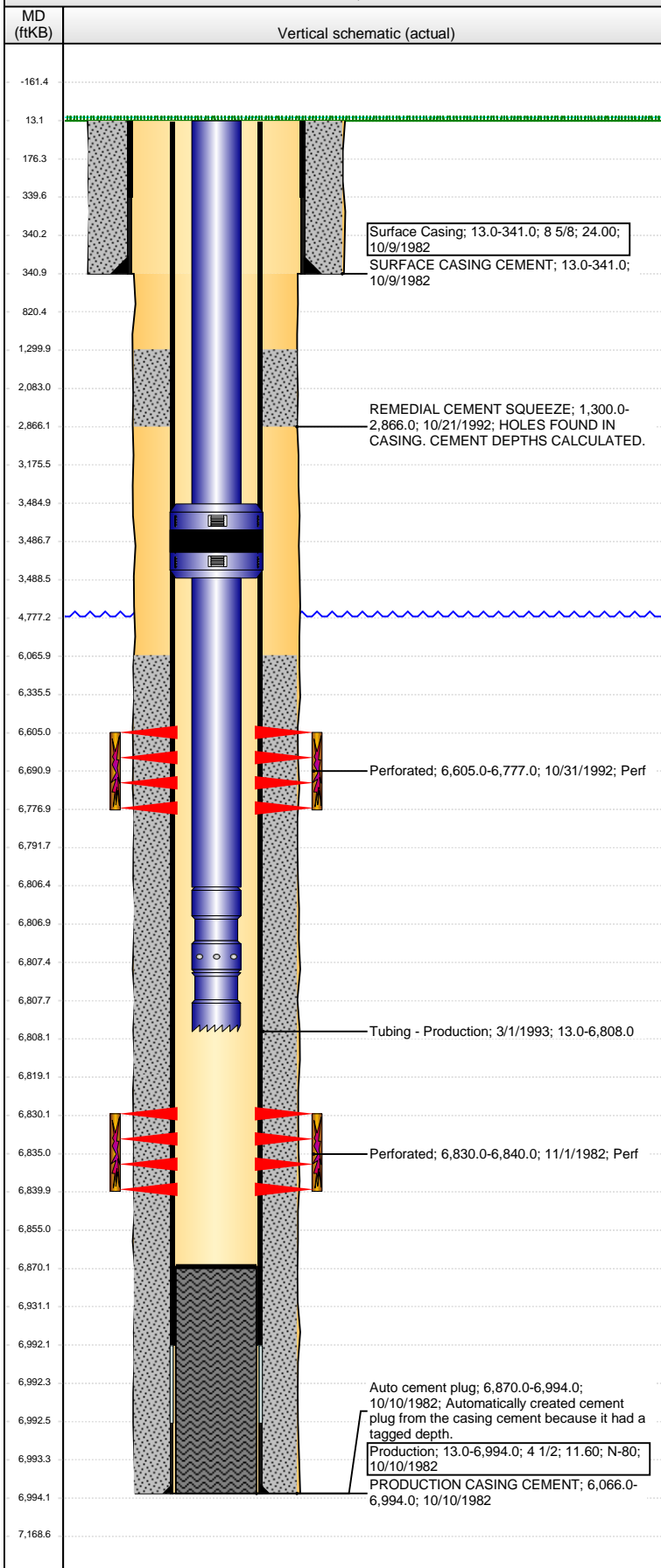


**Well Name: MEISINGER 33-01**

VERTICAL - ORIGINAL HOLE, 10/10/2013 7:31:53 AM



## Well Header

API	Business Unit	District	Well Config
05-123-10837	WATTENBERG	15	VERTICAL
Original KB Elevation (ft)	KB - GL / MSL (ftKB)	Spud Date	P & A Date
4,708.00	13.00	10/9/1982	

Comment  
WELL AKA MEISSINGER 1 OR MEISINGER 1(NAME ON WELL FILE)

GYRO STACKED OUT @ 984'

Directions To Well

## Congressional Location

Quarter 1	Quarter 2	Quarter 3	Quarter 4	Section	Township	Twntshp N...	Range	Rng E/W Dir
		NW	SW	33	5	N	64	W

## Bottom Hole Location

North-South Distance (ft)	From N or S Line	East-West Distance (ft)	From E or W Line

## Plug Back Total Depths

Date	Depth (ftKB)	Method	Com
10/14/1982	6,934.0	CASING TALLY	
10/20/1992	6,870.0	CASED HOLE LOG	DEPTH LOGGER ON CBL

## Wellbore Sections

Section Des	Size (in)	Act Top (ftKB)	Act Btm (ftKB)
SURFACE	12 1/4	13.0	341.0
PRODUCTION	7 7/8	341.0	6,994.0

## Zone Statuses

Zone Name	Status Date	Status	Job
NIOBRARA	11/4/1992	PR	RECOMPLETION, 10/12/1992 00:00
CODELL		PR	
NIOBRARA-CODELL	3/3/1993	PR	

## Casing Strings

### Surface Casing, 341.0ftKB

Casing Description	Run Date	OD (in)	Wt/Len (l...)	Grade	Top (ftKB)	MD (ftKB)
Surface Casing	10/9/1982	8 5/8	24.00		13.0	341.0

### Production, 6,994.0ftKB

Casing Description	Run Date	OD (in)	Wt/Len (l...)	Grade	Top (ftKB)	MD (ftKB)
Production	10/10/1982	4 1/2	11.60	N-80	13.0	6,994.0

## Cement

Description	Top Depth (ftKB)	Bottom Depth (ftKB)
SURFACE CASING CEMENT	13.0	341.0
PRODUCTION CASING CEMENT	6,066.0	6,994.0
REMEDIAL CEMENT SQUEEZE	1,300.0	2,866.0

## Tubing Components

Item Des	OD (in)	Wt (lb/ft)	Grade	Jts	Len (ft)	Btm (ftKB)	Btm (TVD) (ftKB)
Tubing	2 3/8	4.70	J-55	107	3,472.00	3,485.0	
Packer	4 1/2			1	3.50	3,488.5	
Tubing	2 3/8	4.70	J-55	103	3,317.90	6,806.4	
Seal Nipple	2 3/8			1	1.10	6,807.5	
Notched collar	2 3/8			1	0.50	6,808.0	

## Perforation Data

Zone	Bnch/St g	Entered Shot Total	Top (ftKB)	Btm (ftKB)	Date
NIOBRARA, ORIGINAL HOLE		30	6,605.00	6,777.00	10/31/1992
CODELL, ORIGINAL HOLE		21	6,830.00	6,840.00	11/1/1982

## Stimulations & Treatments

Date	Zone	Primary Job Type
10/15/1982	CODELL, ORIGINAL HOLE	DRILLING/COMPLETION - ORIGINAL
Technical Result	Tech Result Details	Tech Result Note

Comment  
NO SPECIFIC INFO ON FRAC

Date	Zone	Primary Job Type
11/4/1992	NIOBRARA, ORIGINAL HOLE	RECOMPLETION
Technical Result	Tech Result Details	Tech Result Note
Comment		

**Well Name: MEISINGER 33-01**

VERTICAL - ORIGINAL HOLE, 10/10/2013 7:31:55 AM

## Other In Hole

Run Date	Des	OD (in)	Top (ftKB)	Btm (ftKB)

## Logs

Date	Type	Top (ftKB)	Btm (ftKB)
10/20/1992	CBL/CCL/GR	5,768.0	6,862.0
10/20/1992	PIPE ANALYSIS	6.0	6,022.0
2/7/2013	GYRO	0.0	984.0

