

---

**CONOCO/PHILLIPS COMPANY EBUSINESS**

---

Converse Family 6-1H  
WILDCAT  
Arapahoe County , Colorado

**Cement Surface Casing**  
25-Apr-2013

**Job Site Documents**

## Field Ticket

<b>Field Ticket Number:</b> 900383288		<b>Field Ticket Date:</b> Thursday, April 25, 2013	
<b>Bill To:</b>		<b>Job Name:</b> Surface Casing <b>Order Type:</b> Streamline Order (ZOH) <b>Well Name:</b> Converse Family 6-1H <b>Company Code:</b> 1100 <b>Customer PO No.:</b> NA <b>Shipping Point:</b> Fort Lupton, CO, USA <b>Sales Office:</b> Rocky Mountains BD <b>Well Type:</b> Oil <b>Well Category:</b> Development	
<b>Ship To:</b> CONOCO CONVERSE FAMILY 6 #1H,ARAPAH CONVERSE FAMILY 6 #1H 2987082 S6 T4S R63W WATKINS, CO 80137			

Material	Description	QTY	UOM	Base Amt	Unit Amt	Gross Amount	Discount	Net Amount
7521	CMT SURFACE CASING BOM	1	JOB	0.00	0.00	0.00	64%	0.00
2	MILEAGE FOR CEMENTING CREW,ZI	82	MI	0.00	5.76	472.32	64%	170.04
	Number of Units	1						
1	ZI-MILEAGE FROM NEAREST HES BASE,/UNIT	82	MI	0.00	9.79	802.78	64%	289.00
	Number of Units	1						
16091	ZI - PUMPING CHARGE	1	EA	0.00	4,935.00	4,935.00	64%	1,776.60
	DEPTH	1810						
	FEET/METERS (FT/M)		FT					
139	ADC (AUTO DENSITY CTRL) SYS, /JOB,ZI	1	JOB	0.00	2,275.00	2,275.00	64%	819.00
	NUMBER OF UNITS	1						
130104	PORT. DATA ACQUIS. W/OPTICEM RT W/HES	1	EA	0.00	2,549.00	2,549.00	64%	917.64
	DAYS OR PARTIAL DAY(WHOLE NO.)	1						
114	R/A DENSOMETER W/CHART RECORDER,/JOB,Z	1	JOB	0.00	1,285.00	1,285.00	64%	462.60
	NUMBER OF UNITS	1						
92	PORTABLE RADIOS, ZI	5	EA		0.00	0.00		0.00
	NUMBER OF JOBS	1						
90	ZI QUICK LATCH ATTACHMENT	1	JOB	0.00	616.00	616.00	64%	221.76
	SIZE IN INCHES/MILLIMETER	9.625						
	INCHES/MILLIMETERS (IN/MM)		IN					
74038	ZI PLUG CONTAINER RENTAL-1ST DAY	1	EA	0.00	1,322.00	1,322.00	64%	475.92
	DAYS OR FRACTION (MIN1)	1						
101214575	PLUG,CMTG, TOP,9 5/8,HWE,8.16 MIN/9.06 MA	1	EA	0.00	454.00	454.00	64%	163.44

## Field Ticket

<b>Field Ticket Number:</b> 900383288	<b>Field Ticket Date:</b> Thursday, April 25, 2013
<b>Bill To:</b>	<b>Job Name:</b> Surface Casing <b>Order Type:</b> Streamline Order (ZOH) <b>Well Name:</b> Converse Family 6-1H <b>Company Code:</b> 1100 <b>Customer PO No.:</b> NA <b>Shipping Point:</b> Fort Lupton, CO, USA <b>Sales Office:</b> Rocky Mountains BD <b>Well Type:</b> Oil <b>Well Category:</b> Development
<b>Ship To:</b> CONOCO CONVERSE FAMILY 6 #1H,ARAPAH CONVERSE FAMILY 6 #1H 2987082 S6 T4S R63W WATKINS, CO 80137	

Material	Description	QTY	UOM	Base Amt	Unit Amt	Gross Amount	Discount	Net Amount
7	ENVIRONMENTAL CHARGE,/JOB,ZI	1	JOB	0.00	134.00	134.00		134.00
8	IRON SAFETY INSPECTION SURCHARGE /JOB ZI	1	JOB	0.00	83.00	83.00		83.00
86954	ZI FUEL SURCHG-CARS/PICKUPS<1 1/2TON <i>Number of Units</i>	82 1	MI	0.00	0.24	19.68		19.68
86955	ZI FUEL SURCHG-HEAVY TRKS >1 1/2 TON <i>Number of Units</i>	82 5	MI	0.00	0.72	295.20		295.20
87605	ZI FUEL SURCHG-CMT & CMT ADDITIVES <i>NUMBER OF TONS</i>	41 43.67	MI	0.00	0.24	429.71		429.71
372867	Cmt PSL - DOT Vehicle Charge, CMT	4	EA	0.00	241.00	964.00		964.00
76400	ZI MILEAGE,CMT MTLs DEL/RET MIN <i>NUMBER OF TONS</i>	41 43.67	MI	0.00	3.35	5,998.07	64%	2,159.31
3965	HANDLE&DUMP SVC CHRg, CMT&ADDITIVES,ZI <i>NUMBER OF EACH</i> <i>Unit of Measurement</i>	975 1 0	CF	0.00	5.49	5,352.75	64%	1,926.99
452990	SWIFTCEM (TM) SYSTEM	280	SK			18,071.37	64.0%	6,505.70
452990	SWIFTCEM (TM) SYSTEM	560	SK			36,099.81	64.0%	12,995.93
100008028	SUGAR, GRANULATED, IMPERIAL	50	LB	0.00	6.44	322.00	64%	115.92
45	SPEC EQUIP CHRg, NO PRICE ESTABLISHED ZI	1	EA	0.00	250.00	250.00	64%	90.00
<b>Totals</b>						<b>USD</b>		
						<b>82,730.69</b>	<b>51,715.25</b>	<b>31,015.44</b>

Halliburton Rep: JOSEPH BARRAS  
 Customer Agent: Clint Goins  
 Halliburton Approval

*Field Ticket*

<b>Field Ticket Number:</b> 900383288	<b>Field Ticket Date:</b> Thursday, April 25, 2013
<b>Bill To:</b>  	<b>Job Name:</b> Surface Casing <b>Order Type:</b> Streamline Order (ZOH) <b>Well Name:</b> Converse Family 6-1H <b>Company Code:</b> 1100 <b>Customer PO No.:</b> NA <b>Shipping Point:</b> Fort Lupton, CO, USA <b>Sales Office:</b> Rocky Mountains BD <b>Well Type:</b> Oil <b>Well Category:</b> Development
<b>Ship To:</b> CONOCO CONVERSE FAMILY 6 #1H,ARAPAH CONVERSE FAMILY 6 #1H 2987082 S6 T4S R63W WATKINS, CO 80137	

Material	Description	QTY	UOM	Base Amt	Unit Amt	Gross Amount	Discount	Net Amount
----------	-------------	-----	-----	----------	----------	--------------	----------	------------

THIS OUTPUT DOES NOT INCLUDE TAXES. APPLICABLE SALES TAX WILL BE BILLED ON THE FINAL INVOICE.  
 CUSTOMER HEREBY ACKNOWLEDGES RECEIPT OF THE MATERIALS AND SERVICES DESCRIBED ABOVE AND ON THE ATTACHED DOCUMENTS.

X \_\_\_\_\_ FIELD TICKET TOTAL: USD 31,015.44

Customer Signature

Was our HSE performance satisfactory? Y or N      Were you satisfied with our Equipment? Y or N      Were you satisfied with our people? Y or N  
 (Health, Safety, Environment)

Comments

*The Road to Excellence Starts with Safety*

Sold To #: 352431	Ship To #: 2987082	Quote #:	Sales Order #: 900383288
Customer: CONOCO/PHILLIPS COMPANY EBUSINESS		Customer Rep: Goins, Clint	
Well Name: Converse Family	Well #: 6-1H	API/UWI #: 05-005-07204	
Field: WILDCAT	City (SAP): WATKINS	County/Parish: Arapahoe	State: Colorado
Legal Description: Section 6 Township 4S Range 63W			
Lat: N 39.729 deg. OR N 39 deg. 43 min. 43.928 secs.		Long: W 104.472 deg. OR W -105 deg. 31 min. 40.418 secs.	
Contractor: H&P 280	Rig/Platform Name/Num: H&P 280		
Job Purpose: Cement Surface Casing			
Well Type: Development Well		Job Type: Cement Surface Casing	
Sales Person: GROFF, THEODORE	Srvc Supervisor: BARRAS, JOSEPH	MBU ID Emp #: 405168	

**Job Personnel**

HES Emp Name	Exp Hrs	Emp #	HES Emp Name	Exp Hrs	Emp #	HES Emp Name	Exp Hrs	Emp #
BARNES, BRIAN L	8	485204	BARRAS, JOSEPH Corey	8	405168	CHISLUM, DENNIS	8	512130
HINKLE, BRADLEY Dean	8	512123	NIELSON, BRANDON K	8	479703			

**Equipment**

HES Unit #	Distance-1 way	HES Unit #	Distance-1 way	HES Unit #	Distance-1 way	HES Unit #	Distance-1 way
11338223	41 mile	11398319	41 mile	11748359	41 mile	11764052	41 mile
11764739	41 mile	11812069C	41 mile	12010172	41 mile	NA	41 mile

**Job Hours**

Date	On Location Hours	Operating Hours	Date	On Location Hours	Operating Hours	Date	On Location Hours	Operating Hours
TOTAL								
<i>Total is the sum of each column separately</i>								

Job				Job Times			
Formation Name	Formation Depth (MD)	Top	Bottom	Called Out	Date	Time	Time Zone
Form Type			BHST	On Location	25 - Apr - 2013	13:00	MST
Job depth MD	1810.5 ft		Job Depth TVD	Job Started	25 - Apr - 2013	17:00	MST
Water Depth			Wk Ht Above Floor	Job Completed	25 - Apr - 2013	20:34	MST
Perforation Depth (MD)	From		To	Departed Loc	26 - Apr - 2013	23:14	GMT
						00:30	MST

**Well Data**

Description	New / Used	Max pressure psig	Size in	ID in	Weight lbm/ft	Thread	Grade	Top MD ft	Bottom MD ft	Top TVD ft	Bottom TVD ft
13-1/2" Open Hole				13.5				100.	1810.		
16" Casing	Unknown		16.	15.5					100.		
9-5/8" Casing	Unknown		9.625	8.921	36.	STC	J-55		1810.		

**Sales/Rental/3<sup>rd</sup> Party (HES)**

Description	Qty	Qty uom	Depth	Supplier
CMT SURFACE CASING BOM	0	JOB		
SHOE,FLT,9-5/8 8RD,2-3/4 SUPER SEAL	1	EA		
CLR,FLT,9-5/8 8RD 29.3-40PPF,2-3/4	1	EA		
CENTRALIZER-9-5/8"-CSG-12 1/4"-HINGED	25	EA		
COLLAR-STOP-9 5/8"-FRICTION-HINGED	1	EA		
KIT,HALL WELD-A	1	EA		
MILEAGE FOR CEMENTING CREW,ZI	100	MI		
ZI FUEL SURCHG-CARS/PICKUPS<1 1/2TON	100	MI		

**Tools and Accessories**

Type	Size	Qty	Make	Depth	Type	Size	Qty	Make	Depth	Type	Size	Qty	Make	
Guide Shoe					Packer					Top Plug				
Float Shoe					Bridge Plug					Bottom Plug				
Float Collar					Retainer					SSR plug set				
Insert Float										Plug Container				
Stage Tool										Centralizers				
Miscellaneous Materials														
Gelling Agt			Conc		Surfactant			Conc		Acid Type		Qty	Conc %	
Treatment Fld			Conc		Inhibitor			Conc		Sand Type		Size	Qty	
Fluid Data														
Stage/Plug #: 1														
Fluid #	Stage Type	Fluid Name					Qty	Qty uom	Mixing Density lbm/gal	Yield ft3/sk	Mix Fluid Gal/sk	Rate bbl/min	Total Mix Fluid Gal/sk	
1	Fresh Water Spacer						40.00	bbl	8.33	.0	.0	.0		
2	SwiftCem B1	SWIFTCEM (TM) SYSTEM (452990)					560.0	sacks	12.	2.56	15.12		15.12	
		15.12 Gal FRESH WATER												
3	SwiftCem B1	SWIFTCEM (TM) SYSTEM (452990)					280.0	sacks	13.	2.01	11.01		11.01	
		11.01 Gal FRESH WATER												
Calculated Values			Pressures			Volumes								
Displacement			Shut In: Instant			Lost Returns		0	Cement Slurry		Pad			
Top Of Cement			5 Min			Cement Returns		144.5	Actual Displacement		Treatment			
Frac Gradient			15 Min			Spacers		40	Load and Breakdown		Total Job			
Rates														
Circulating			Mixing			Displacement			Avg. Job					
Cement Left In Pipe			Amount	40 ft	Reason	Shoe Joint								
Frac Ring # 1 @			ID	Frac ring # 2 @	ID	Frac Ring # 3 @			ID	Frac Ring # 4 @			ID	
The Information Stated Herein Is Correct						Customer Representative Signature								

*The Road to Excellence Starts with Safety*

Sold To #: 352431	Ship To #: 2987082	Quote #:	Sales Order #: 900383288
Customer: CONOCO/PHILLIPS COMPANY EBUSINESS		Customer Rep: Goins, Clint	
Well Name: Converse Family	Well #: 6-1H	API/UWI #: 05-005-07204	
Field: WILDCAT	City (SAP): WATKINS	County/Parish: Arapahoe	State: Colorado
Legal Description: Section 6 Township 4S Range 63W			
Lat: N 39.729 deg. OR N 39 deg. 43 min. 43.928 secs.		Long: W 104.472 deg. OR W -105 deg. 31 min. 40.418 secs.	
Contractor: H&P 280		Rig/Platform Name/Num: H&P 280	
Job Purpose: Cement Surface Casing			Ticket Amount:
Well Type: Development Well		Job Type: Cement Surface Casing	
Sales Person: GROFF, THEODORE		Srvc Supervisor: BARRAS, JOSEPH	MBU ID Emp #: 405168

Activity Description	Date/Time	Cht #	Rate bbl/min	Volume bbl		Pressure psig		Comments
				Stage	Total	Tubing	Casing	
Start Job	04/25/2013 20:34							
Test Lines	04/25/2013 20:37		2					TEST TO 2500 NPO VISIBLE LEAKS
Pump Spacer 1	04/25/2013 20:41		4	40			89.0	10 BBL OF WATER WITH DYE FOLLOWED BY 30 BBL OF FRESH
Shutdown	04/25/2013 20:42							WASH PUMPS AND LINES RELOAD TOP PLUG WITNESSED BY COMPANYMAN
Drop Bottom Plug	04/25/2013 20:52							PRE LOADED WITNESSED BY COMPANYMAN
Pump Lead Cement	04/25/2013 21:02		8	255			322.0	MIXED WITH FRESH WATER @ 12.0 PPG /255 BBL OR 560 SKS OF ECOCEM B1
Pump Tail Cement	04/25/2013 21:40		8	100.2			360.0	MIXED WITH FRESH WATER @13.0 PPG/100.2 BBL OR 280 SKS OF ECONOCEM B1 / cement to surface with 92 bbl of tail away
Drop Top Plug	04/25/2013 22:01							WITNESSED BY COMPANYMAN
Pump Displacement	04/25/2013 22:03		8	136.5			598.0	136.5 OF FRESH WATER
Bump Plug	04/25/2013 22:36						998.0	plug bumped @ calculated to 998 psi
Check Floats	04/25/2013 22:41							FLOATS HELD WITH .5 BBL BACK
Other	04/25/2013 22:42		1	0.5			1550. 0	CASING TEST FOR 30 MIN @ 1500 PSI
End Job	04/25/2013 23:14							

Sold To #: 352431

Ship To #: 2987082

Quote # :

Sales Order #: 900383288

SUMMIT Version: 7.3.0079

Friday, April 26, 2013 12:11:00

# Material Roll Up

Sales Order #:  
AFE #:  
WO #:  
PO #:

Crew: \_\_\_\_\_  
Requested Job Start Date: \_\_\_\_\_

## Colorado Oil and Gas Commission Wellsite Form

Customer: CONOCO PHILLIPS      Field: \_\_\_\_\_      Job Type: SURFACE

UWI / API Number: \_\_\_\_\_      County/Parish: \_\_\_\_\_  
WELD      SERVICE SUPERVISOR  
JOSEPH BARRAS

Well Name: CONVERSE FAMILY      State: COLORADO

Well No: 6-1H      Latitude: \_\_\_\_\_

Stage / Zone: \_\_\_\_\_      Longitude: \_\_\_\_\_      Cust Rep  
Name: CLINT GOINS

Formation: \_\_\_\_\_      Sect / Twn / Rng: / /      Cust Rep Phone #: 337-378-8822

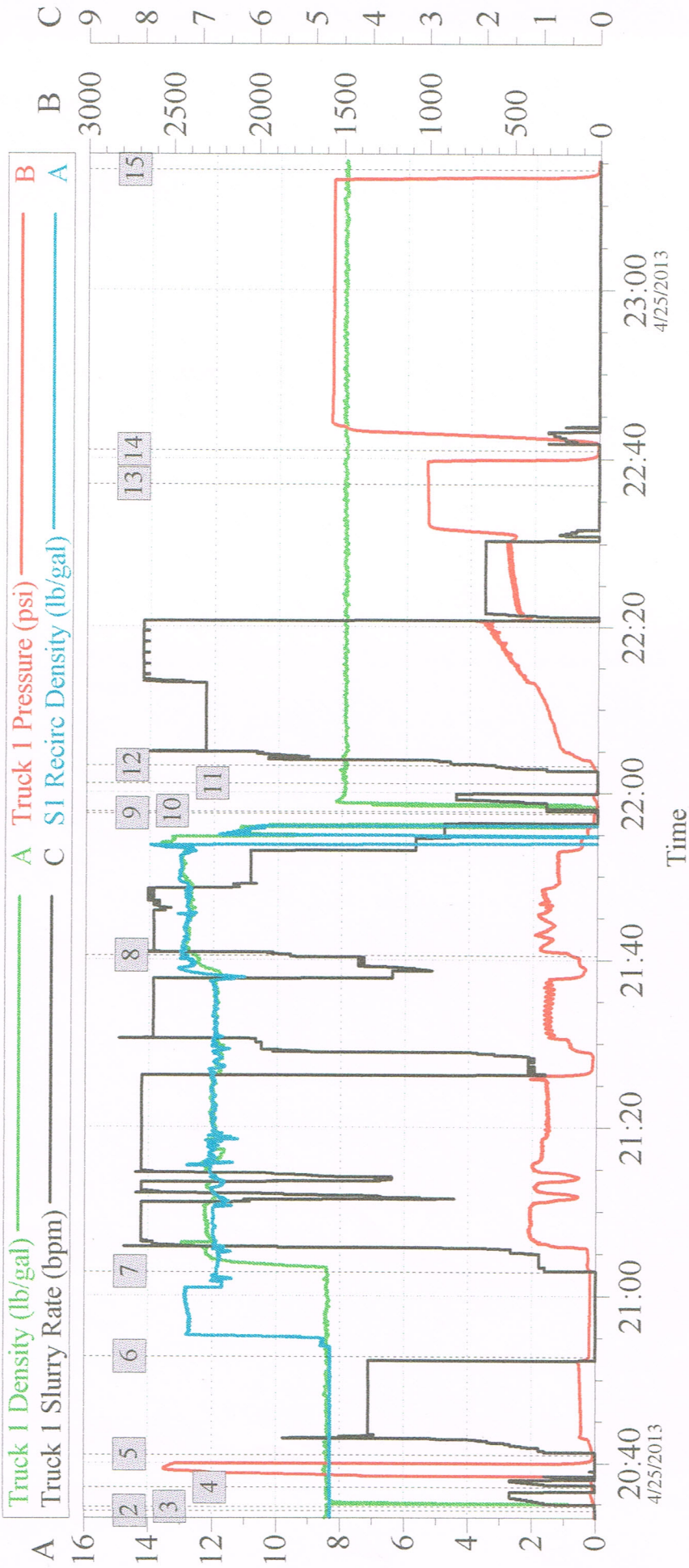
**Do Not leave the yard without the proper MSDS documentation for All chemicals.**

Colorado Oil and Gas Commission					
Material	Delivered to Location	UOM	Specific Gravity	Weight (lbs)	Comment
SWIFTCEM	840 SKS				
SUGAR	50 LBS				
RED DYE	1 LBS				

Operator provided all Material Safety Data Sheets (MSDS) related to material listed above.  
Operator representative will check box to designate he/she has received all MSDS documentation.

\_\_\_\_\_  
Operator Representative Signature

# CONOCO PHILLIPSCONVERSE FAMILY #6-1H SURFACE



## Global Event Log

Intersection	TIP	Intersection	TIP	Intersection	TIP
1 Starting Job	17:57:16 -127.0	2 Start Job	20:34:10 3.000	3 Other	20:34:39 2.000
4 Test Lines	20:37:02 15.00	5 Pump Spacer 1	20:41:02 14.00	6 Drop Top Plug	20:52:42 40.45
7 Pump Lead Cement	21:02:50 31.00	8 Pump Tail Cement	21:40:28 145.4	9 Shutdown	21:57:30 18.40
10 Clean Lines	21:57:43 8.000	11 Drop Top Plug	22:01:07 1.000	12 Pump Displacement	22:03:13 26.68
13 Bump Plug	22:36:55 1005	14 Pressure Up Well	22:40:59 8.000	15 End Job	23:14:10 9.000

Customer:  
Well Description:

Job Date: 25-Apr-2013  
UWI:

Sales Order #: 900383288