

**BILL BARRETT CORPORATION E-BILL  
DO NOT MAIL-1099 18TH ST,STE 2300W  
DENVER, Colorado**

Anschutz Windmill 07-26H

CADE 24

## **Post Job Summary** **Cement Intermediate Casing**

Prepared for:  
Date Prepared: 8/23/2013  
Version: 1

Service Supervisor: OTERI, VAUGHN

Submitted by: FINNEY, SEAN

**HALLIBURTON**

## Wellbore Geometry

---

Job Tubulars					MD		TVD		Shoe Joint Length ft
Type	Description	Size in	ID in	Wt lbm/ft	Top ft	Bottom ft	Top ft	Bottom ft	
Casing	9 5/8" Surface Casing	9.63	8.921	36.00	0.00	846.00			
Open Hole Section	8 3/4" Open Hole		8.750		846.00	6,500.00	846.00	6,188.00	
Casing	7" Intermediate Casing	7.00	6.276	26.00	0.00	6,500.00	0.00	6,188.00	42.00

# HALLIBURTON

## Pumping Schedule

Stage /Plug #	Fluid #	Fluid Type	Fluid Name	Surface Density lbm/gal	Avg Rate bbl/min	Surface Volume	Downhole Volume
1	1	Spacer	TUNED SPACER III	11.50	5.00	40.0 bbl	40.0 bbl
1	2	Cement Slurry	12.5# EconoCem Lead	12.50	8.00	405.0 sacks	405.0 sacks
1	3	Cement Slurry	13.5# FracCem Tail	13.50	8.00	165.0 sacks	165.0 sacks
1	4	Mud	MUD DISPLACEMENT	9.00	8.00	247.7 bbl	247.7 bbl

## Fluids Pumped

**Stage/Plug # 1      Fluid 1:**      TUNED SPACER III  
TUNED SPACER III - SBM (483826)  
117.6 Barite  
lbm/bbl

Fluid Density: 11.50 lbm/gal  
Fluid Volume: 40.00 bbl  
Pump Rate: 5.00 bbl/min

**Stage/Plug # 1      Fluid 2:**      12.5# EconoCem Lead  
ECONOCEM (TM) SYSTEM  
5 lbm Silicalite Compacted

Fluid Weight: 12.50 lbm/gal  
Slurry Yield: 1.97 ft<sup>3</sup>/sack  
Total Mixing Fluid: 10.72 Gal  
Surface Volume: 405.0 sacks  
Sacks: 405.0 sacks

**Stage/Plug # 1      Fluid 3:**      13.5# FracCem Tail  
FRACCEN (TM) SYSTEM

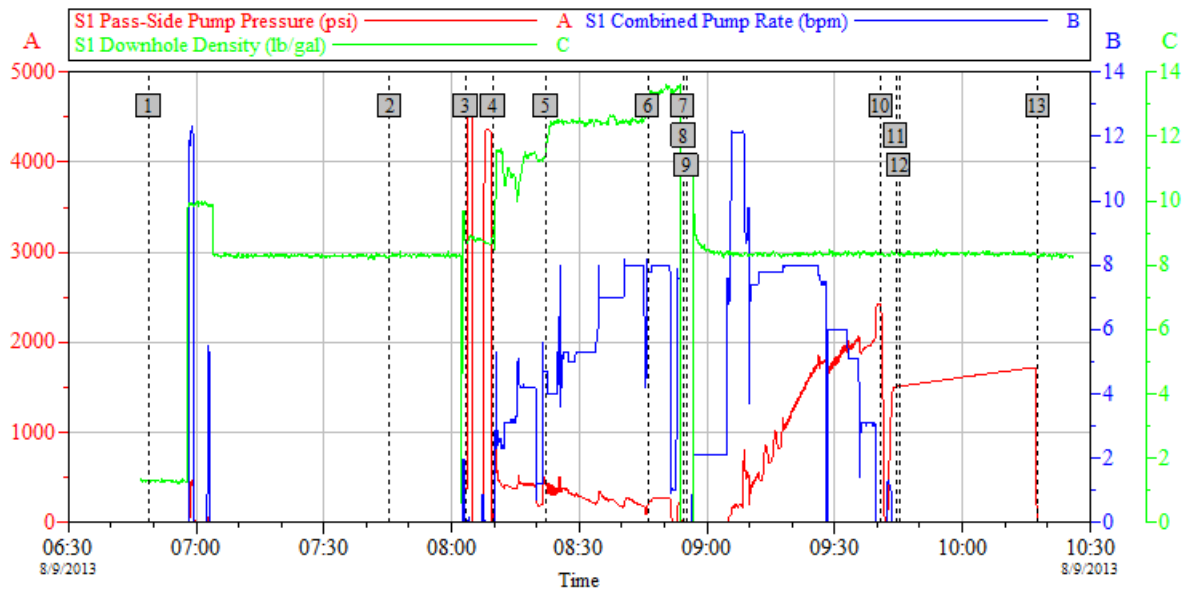
Fluid Weight: 13.50 lbm/gal  
Slurry Yield: 1.74 ft<sup>3</sup>/sack  
Total Mixing Fluid: 8.30 Gal  
Surface Volume: 165.0 sacks  
Sacks: 165.0 sacks

**Stage/Plug # 1      Fluid 4:**      MUD  
DISPLACEMENT

Fluid Density: 9.00 lbm/gal  
Pump Rate: 8.00 bbl/min

# HALLIBURTON

## Data Acquisition



Global Event Log			
1 Starting Job	06:48:56	2 Start Job	07:45:30
3 Test Lines	08:03:25	4 Pump Spacer 1	08:09:50
5 Pump Lead Cement	08:22:13	6 Pump Tail Cement	08:46:08
7 Shutdown	08:54:22	8 Drop Top Plug	08:54:35
9 Pump Displacement	08:55:14	10 Bump Plug	09:40:53
11 Shut In Well	09:44:23	12 Pressure Up Well	09:45:11
13 End Job	10:17:46		

Customer:	Job Date: 09-Aug-2013	Sales Order #: 900653769
Well Description:	UWI:	

OptiCem v6.4.10  
06-Sep-13 10:11

# HALLIBURTON

## Service Supervisor Reports

### Job Log

Date/Time	Chart #	Activity Code	Pump Rate	Cum Vol	Pump		Pressure (psig)	Comments
08/09/2013 07:45		Start Job						ARRIVED ON LOCATIOIN 0330 2 RACKS OF CASING TO RUN AT 0630 CASING AT BOTTOM START RIG UP, WAITING FOR RIG TO CIRCULATE ONE FULL VOLUME PRELOADED PLUG WITNESSED BY COMPANY REP.
08/09/2013 08:03		Test Lines					4359.0	PRESSURE TEST LINES FOUND LEAK AT MANIFOLD/HEAD CONNECTION RELEASE PRESSURE BACK TO TRUCK TIGHTEN CONNECTION RETEST LINES NO LEAKS
08/09/2013 08:09		Pump Spacer 1	3	40			436.0	MIXED 11.5PPG TUNED SPACER WITH FRESHWATER
08/09/2013 08:22		Pump Lead Cement	8	142.09			235.0	MIXED 12.5PPG ECONOCHEM WITH FRESH WATER
08/09/2013 08:46		Pump Tail Cement	8	51.1			270.0	MIXED 13.5PPG FRACCEM WITH FRESH WATER
08/09/2013 08:54		Shutdown						SHUTDOWN TO DROP PLUG
08/09/2013 08:54		Drop Top Plug						TATTLE TALE INDICATED PLUG LEFT HEAD
08/09/2013 08:55		Pump Displacement	8	247.7			1000.0	PUMPED TOTAL DISPLACEMENT WITH FRESH WATER FROM FRAC TANK
08/09/2013 09:40		Bump Plug					2010.0	BUMPED PLUG AT CALCULATED PRESSURE TO LAND 1497.56PSI
08/09/2013 09:44		Check Floats					2488.0	RELEASED PRESSURE BACK TO TRUCK FLOATS HELD 1.5BBL BACK
08/09/2013 09:45		Pressure Up Well					1500.0	PRESSURE UP WELL TO 1500PSI FOR 30MIN PER COMPANY REP. PRESSURE HELD NO LOSSES
08/09/2013 10:15		End Job						

*The Road to Excellence Starts with Safety*

<b>Sold To #:</b> 343492	<b>Ship To #:</b> 3028051	<b>Quote #:</b>	<b>Sales Order #:</b> 900653769
<b>Customer:</b> BILL BARRETT CORPORATION E-BILL		<b>Customer Rep:</b> Gritts, Kim	
<b>Well Name:</b> Anschutz Windmill		<b>Well #:</b> 07-26H	<b>API/UWI #:</b> 05-123-34227
<b>Field:</b> WATTENBERG	<b>City (SAP):</b> KERSEY	<b>County/Parish:</b> Weld	<b>State:</b> Colorado
<b>Lat:</b> N 40.377 deg. OR N 40 deg. 22 min. 35.58 secs.		<b>Long:</b> W 104.298 deg. OR W -105 deg. 42 min. 6.638 secs.	
<b>Contractor:</b> CADE		<b>Rig/Platform Name/Num:</b> Cade 24	
<b>Job Purpose:</b> Cement Intermediate Casing			
<b>Well Type:</b> Development Well		<b>Job Type:</b> Cement Intermediate Casing	
<b>Sales Person:</b> PLIENESS, RYAN		<b>Srvc Supervisor:</b> OTERI, VAUGHN	<b>MBU ID Emp #:</b> 443828

**Job Personnel**

HES Emp Name	Exp Hrs	Emp #	HES Emp Name	Exp Hrs	Emp #	HES Emp Name	Exp Hrs	Emp #
BANUELOS, GUADALUPE	0.0	372277	NESBITT, ROY Iverson	0.0	537416	OTERI, VAUGHN Steeves	0.0	443828
SIMS, DENNIS A	7.5	158880	TRANCOSO, JEFFREY Donald	0.0	550472	TRIER, DEREK	0.0	546461

**Equipment**

HES Unit #	Distance-1 way	HES Unit #	Distance-1 way	HES Unit #	Distance-1 way	HES Unit #	Distance-1 way
10866497C	65 mile	11764737	65 mile	11808819	65 mile	11812069C	65 mile
11923776C	65 mile						

**Job Hours**

Date	On Location Hours	Operating Hours	Date	On Location Hours	Operating Hours	Date	On Location Hours	Operating Hours

<b>TOTAL</b>		Total is the sum of each column separately
--------------	--	--

**Job****Job Times**

Formation Name						Date	Time	Time Zone
<b>Formation Depth (MD)</b>	<b>Top</b>		<b>Bottom</b>		<b>Called Out</b>	08 - Aug - 2013	23:30	MST
<b>Form Type</b>		BHST			<b>On Location</b>	09 - Aug - 2013	03:30	MST
<b>Job depth MD</b>	6544. ft	<b>Job Depth TVD</b>	6544. ft		<b>Job Started</b>	09 - Aug - 2013	07:50	MST
<b>Water Depth</b>		<b>Wk Ht Above Floor</b>	5. ft		<b>Job Completed</b>	09 - Aug - 2013	10:15	MST
<b>Perforation Depth (MD)</b>	<b>From</b>		<b>To</b>		<b>Departed Loc</b>	09 - Aug - 2013	11:00	MST

**Well Data**

Description	New / Used	Max pressure psig	Size in	ID in	Weight lbm/ft	Thread	Grade	Top MD ft	Bottom MD ft	Top TVD ft	Bottom TVD ft
8 3/4" Open Hole				8.75				846.	6500.	846.	6188.
7" Intermediate Casing	New		7.	6.276	26.	LTC	HCP110	.	6500.	.	6188.
9 5/8" Surface Casing	Unknown		9.625	8.921	36.		J-55	.	846.		

Fluid Data									
Stage/Plug #: 1									
Fluid #	Stage Type	Fluid Name	Qty	Qty uom	Mixing Density lbm/gal	Yield ft <sup>3</sup> /sk	Mix Fluid Gal/sk	Rate bbl/min	Total Mix Fluid Gal/sk
1	TUNED SPACER III	TUNED SPACER III - SBM (483826)	40.00	bbl	11.5	7.21	53.96	5.0	
2	12.5# EconoCem Lead	ECONOCEM (TM) SYSTEM (452992)	405.0	sacks	12.5	1.97	10.72	8.0	10.72
5 lbm		SILICALITE - COMPACTED, 50 LB SK (100012223)							
10.72 Gal		FRESH WATER							
3	13.5# FracCem Tail	FRACCEM (TM) SYSTEM (452963)	165.0	sacks	13.5	1.74	8.3	8.0	8.3
8.3 Gal		FRESH WATER							
4	MUD DISPLACEMENT		247.7	bbl	9.0			8.0	
Calculated Values		Pressures		Volumes					
Displacement		Shut In: Instant		Lost Returns		Cement Slurry		Pad	
Top Of Cement		5 Min		Cement Returns		Actual Displacement		Treatment	
Frac Gradient		15 Min		Spacers		Load and Breakdown		Total Job	
Rates									
Circulating		Mixing		Displacement		Avg. Job			
Cement Left In Pipe		Amount	42 ft	Reason	Shoe Joint				
Frac Ring # 1 @	ID	Frac ring # 2 @	ID	Frac Ring # 3 @	ID	Frac Ring # 4 @	ID		
The Information Stated Herein Is Correct				Customer Representative Signature					

