

CHEVRON - MID-CONTINENT EBIZ
760 Horizon Dr
Grand Junction, CO 81506

SKR 598-25-BV-21

Interval 1
Garfield County, Colorado

Sales Order: 900659002

Post Job Report

For: Kieth Hejl
Date: Monday, August 12, 2013

Notice: Although the information contained in this report is based on sound engineering practices, the copyright owner(s) does (do) not accept any responsibility whatsoever, in negligence or otherwise, for any loss or damage arising from the possession or use of the report whether in terms of correctness or otherwise. The application, therefore, by the user of this report or any part thereof, is solely at the user's own risk.

HALLIBURTON

Table of Contents

1.0 Well Information 3

 1.1 Customer Information 3

 1.2 Pipe Information 4

 1.3 Perforation Intervals 4

2.0 Actual Stage Summary 5

 2.1 Stage Summary 5

3.0 Performance Highlights..... 9

 3.1 Job Summary..... 9

 3.2 Job Event Log 11

4.0 Attachments..... 12

 4.1 Treating Chart 12

 4.2 Chemical Chart 13

 4.3 Averages Chart 14

 4.4 Net Pressure Plot 15

1.0 WELL INFORMATION

1.1 Customer Information

Customer	CHEVRON - MID-CONTINENT EBIZ
Sales Order	900659002
Well Name	SKR
Rig Type	None
Interval	1
Well Number	598-25-BV-21
Job Date	12-Aug-2013
County	Garfield
State	Colorado
UWI/API	0504515430
Country	United States of America
H2S Present	Unknown
CO2 Present	Unknown
Customer Representative	Kieth Hejl
Halliburton Representative	Swanson

1.2 Pipe Information

Equipment	Top MD ft	Bottom MD ft	OD in	ID in	Weight lb/ft
Surface Pipe	0.0	50.0	5.000	4.000	
Casing	0.0	4337.0	4.500	4.000	11.60

1.3 Perforation Intervals

Top MD ft	Bottom MD ft	Number of Shots	Perf Density spf	Perf Diameter in
4066.0	4287.0	27	0.1	0.340

2.0 ACTUAL STAGE SUMMARY

2.1 Stage Summary

Stage Number	Stage Time	Start Time	End Time	Time min	Pump Time min	Max Treat Pr psi	Max Slurry Rate bpm
1	12-Aug-13 16:38:42	16:36:46	12-Aug-13 16:38:42	1.97	1.83	4708	31.0
2	12-Aug-13 16:42:14	16:38:43	12-Aug-13 16:42:14	3.53	3.53	6102	64.0
3	12-Aug-13 17:12:27	16:42:15	12-Aug-13 17:12:27	30.22	30.22	4416	64.4
4	12-Aug-13 17:32:50	17:12:28	12-Aug-13 17:32:50	20.38	20.38	4099	64.4
5	12-Aug-13 17:46:36	17:32:51	12-Aug-13 17:46:36	13.77	13.77	6262	64.2
6	12-Aug-13 17:49:58	17:46:37	12-Aug-13 17:49:58	3.37	3.23	5681	58.7
7	12-Aug-13 17:50:04	17:49:59	12-Aug-13 17:50:04	0.10	0.02	1318	0.5

Stage Number	Stage Time	Max Wellhead Rate bpm	Max Prop Conc lb/gal	Max Slurry Prop Conc lb/gal	Avg Treating Pressure psi	Avg Clean Rate bpm	Avg Slurry Rate bpm
1	12-Aug-13 16:38:42	31.0	0.02	0.02	1459	29.6	29.6
2	12-Aug-13 16:42:14	64.0	0.95	0.95	5032	59.5	60.7
3	12-Aug-13 17:12:27	64.4	0.68	0.71	4027	62.8	64.2
4	12-Aug-13 17:32:50	64.4	0.82	0.90	3906	62.1	64.3
5	12-Aug-13 17:46:36	64.2	1.13	1.13	4345	61.2	63.9
6	12-Aug-13 17:49:58	58.7	0.12	0.00	4742	50.6	50.6
7	12-Aug-13 17:50:04	0.5	0.00	0.00	1318	0.5	0.5

Stage Number	Stage Time	Avg Wellhead Rate bpm	Avg Slurry Prop Conc lb/gal	Avg Hydraulic Horsepower hp	Clean Volume gal	Slurry Volume gal	Wellhead Volume gal
1	12-Aug-13 16:38:42	29.6	0.02	1057	2340	2340	2277
2	12-Aug-13 16:42:14	60.7	0.43	7480	8830	9002	9002
3	12-Aug-13 17:12:27	64.2	0.51	6338	79646	81507	81507
4	12-Aug-13 17:32:50	64.3	0.76	6150	53177	55008	55008
5	12-Aug-13 17:46:36	63.9	0.98	6803	35378	36949	36949
6	12-Aug-13 17:49:58	50.6	0.00	5884	6876	6876	6876
7	12-Aug-13 17:50:04	0.5	0.00	17	0	0	0
Total					186247	191684	191621

Stage Number	Stage Time	Prop Mass 100*lb
1	12-Aug-13 16:38:42	0.00
2	12-Aug-13 16:42:14	37.96
3	12-Aug-13 17:12:27	410.15
4	12-Aug-13 17:32:50	403.47
5	12-Aug-13 17:46:36	346.25
6	12-Aug-13 17:49:58	0.00
7	12-Aug-13 17:50:04	0.00
Total		1197.83

3.0 PERFORMANCE HIGHLIGHTS

3.1 Job Summary

Start Time	12-Aug-13 16:24:08	
End Time	12-Aug-13 17:50:04	

SKR 598-25-BV-21 Stage 1		
8/12/2013		
Engineering Notes		
Engineer on Location	Daniel Davis	
ISDP	1331	psi
Initial Pressure(Breakdown)	4708	psi
Max Pressure	6262	psi
Average Pressure	4108	psi
Max Rate	64.4	bpm
Average Rate	64.2	bpm
Proppant Design Volume	117,263	lbs
Proppant in Formation	118,000	lbs
FR-66 Used	39	gals
BE-7 Used	143	gals
SandWedge WF	122	lbs
SCW-4212 Used	28	gals

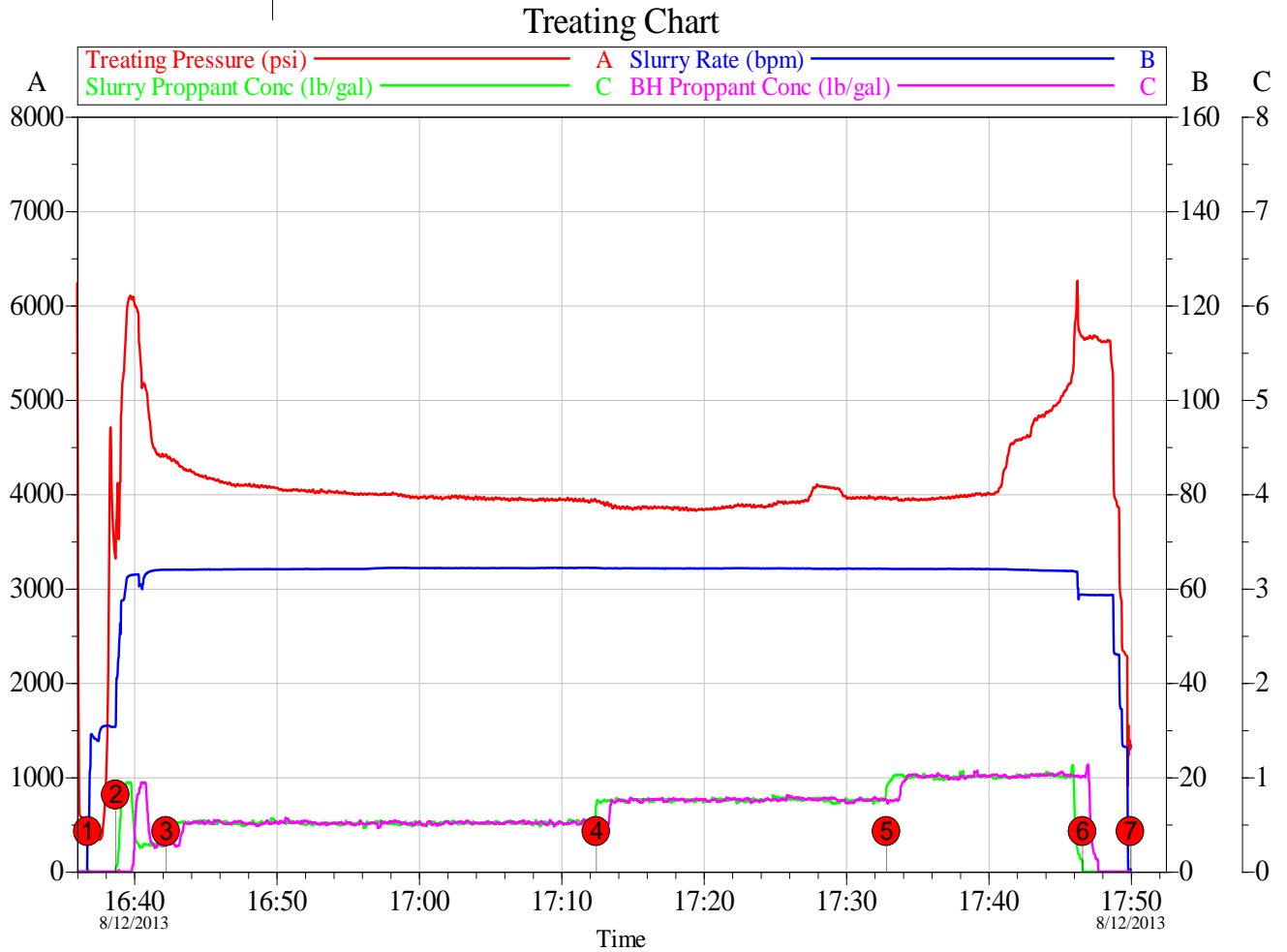
Clean Volume	4434	bbls
Start Time	4:36 PM	HH:MM
End Time	5:49 PM	HH:MM
Job Notes:		
Job pumped to completion.		

3.2 Job Event Log

Stage Number	Event Number	Time	Description	Comment	Treating Pressure psi	Slurry Rate bpm	M Pres p
	1	12-Aug-13 16:24:08	Start Job	Starting Job			
1		16:36:45	Stage 1	Pad	446	9.9	
		16:36:46	Start Averaging	Start Avg Trt 1	444	10.0	
	2	16:38:21	Break Formation	Break Formation	4708	30.7	
2		16:38:43	Stage 2	Proppant Laden Fluid	3380	30.8	
3		16:42:15	Stage 3	Proppant Laden Fluid	4416	64.0	
4		17:12:28	Stage 4	Proppant Laden Fluid	3925	64.4	
5		17:32:51	Stage 5	Proppant Laden Fluid	3951	64.2	
6		17:46:37	Stage 6	Flush	5665	58.7	
	3	17:49:56	ISIP	ISDP = 1331psi	1331	0.0	
7		17:49:59	Stage 7	Shut-In	1318	0.5	
		17:50:04	End Averaging	End Avg Trt 1	1322	0.0	
	4	17:50:06	End Job	Ending Job	1322	0.0	

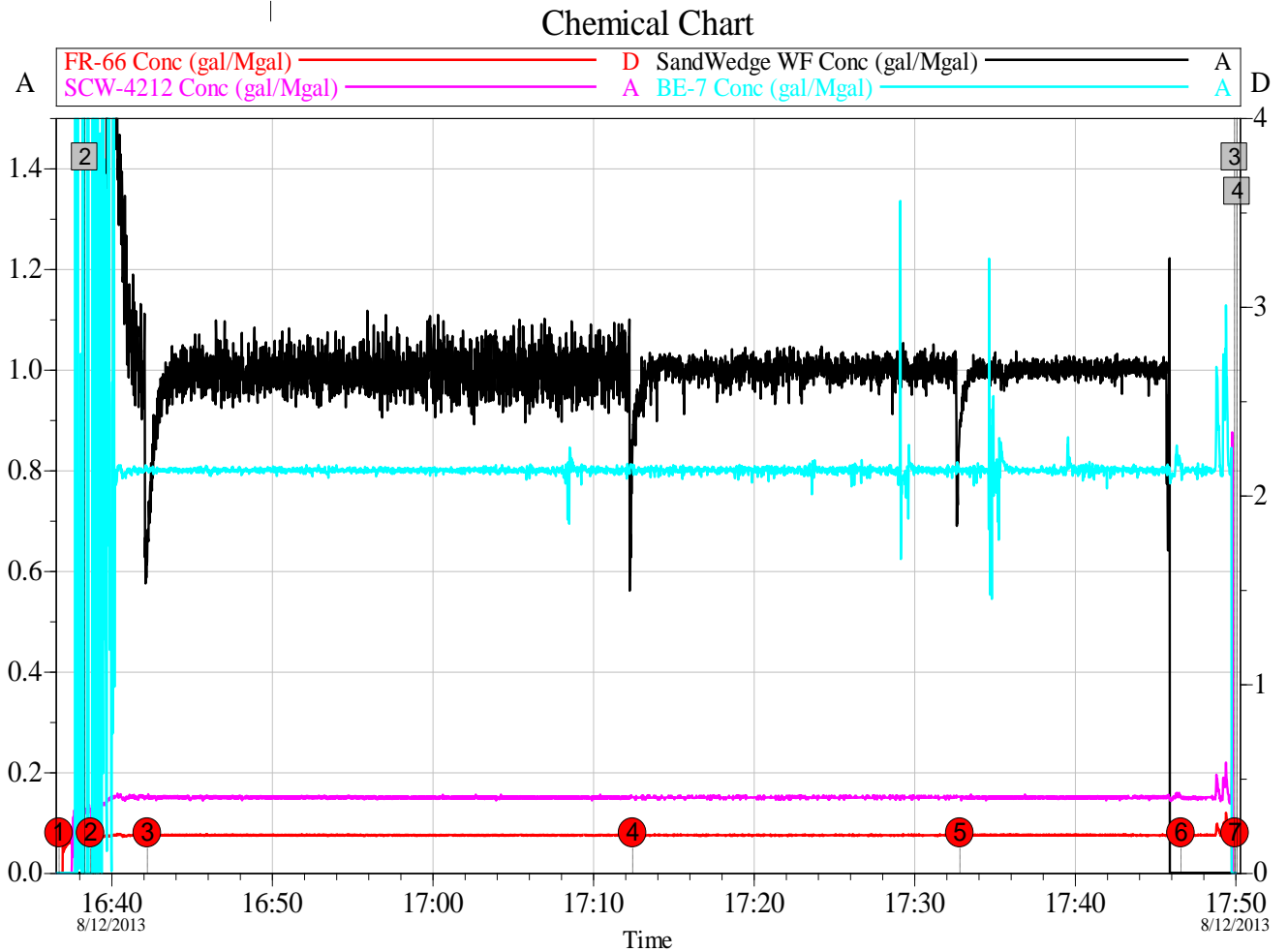
4.0 ATTACHMENTS

4.1 Treating Chart



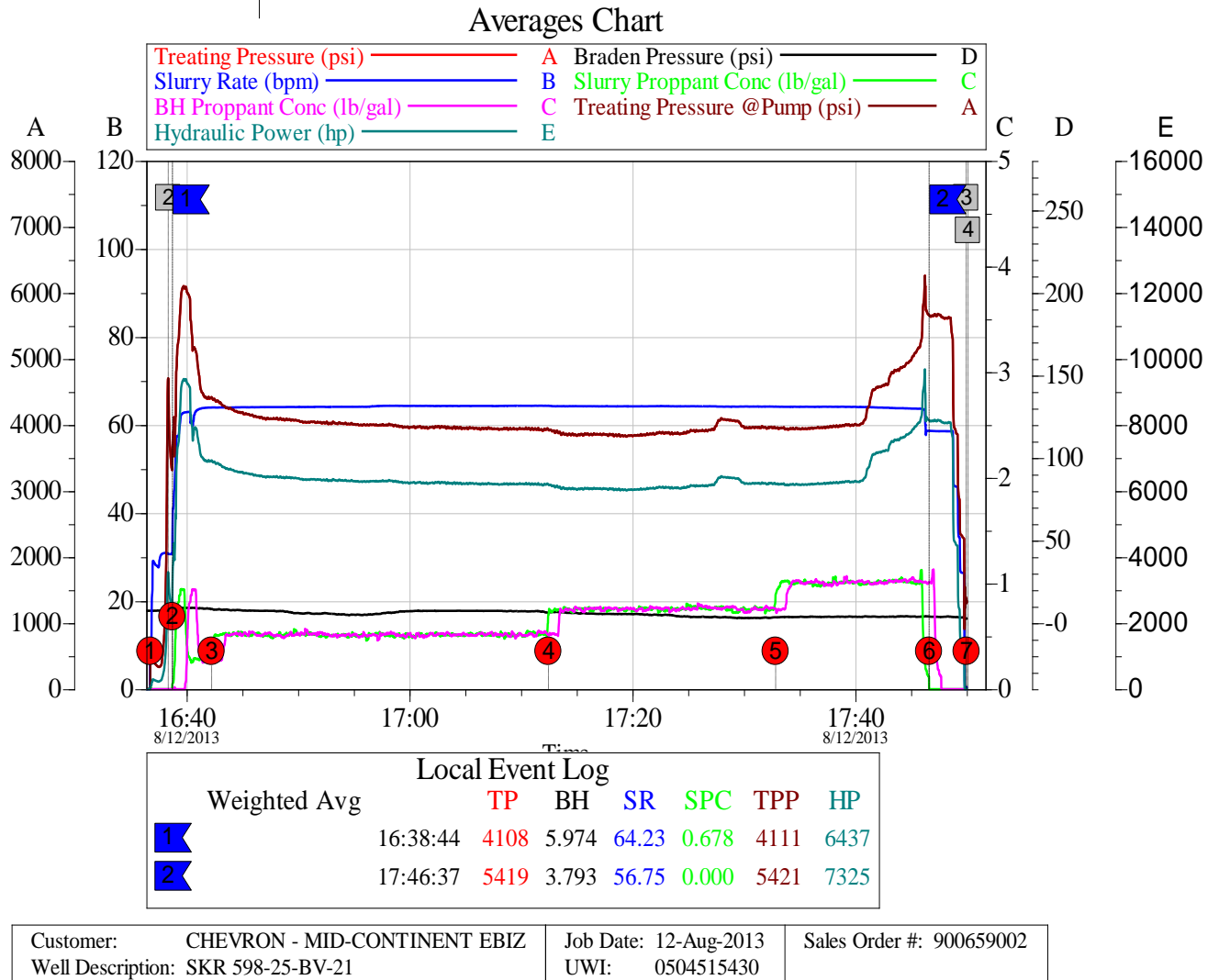
Customer: CHEVRON - MID-CONTINENT EBIZ	Job Date: 12-Aug-2013	Sales Order #: 900659002
Well Description: SKR 598-25-BV-21	UWI: 0504515430	

4.2 Chemical Chart

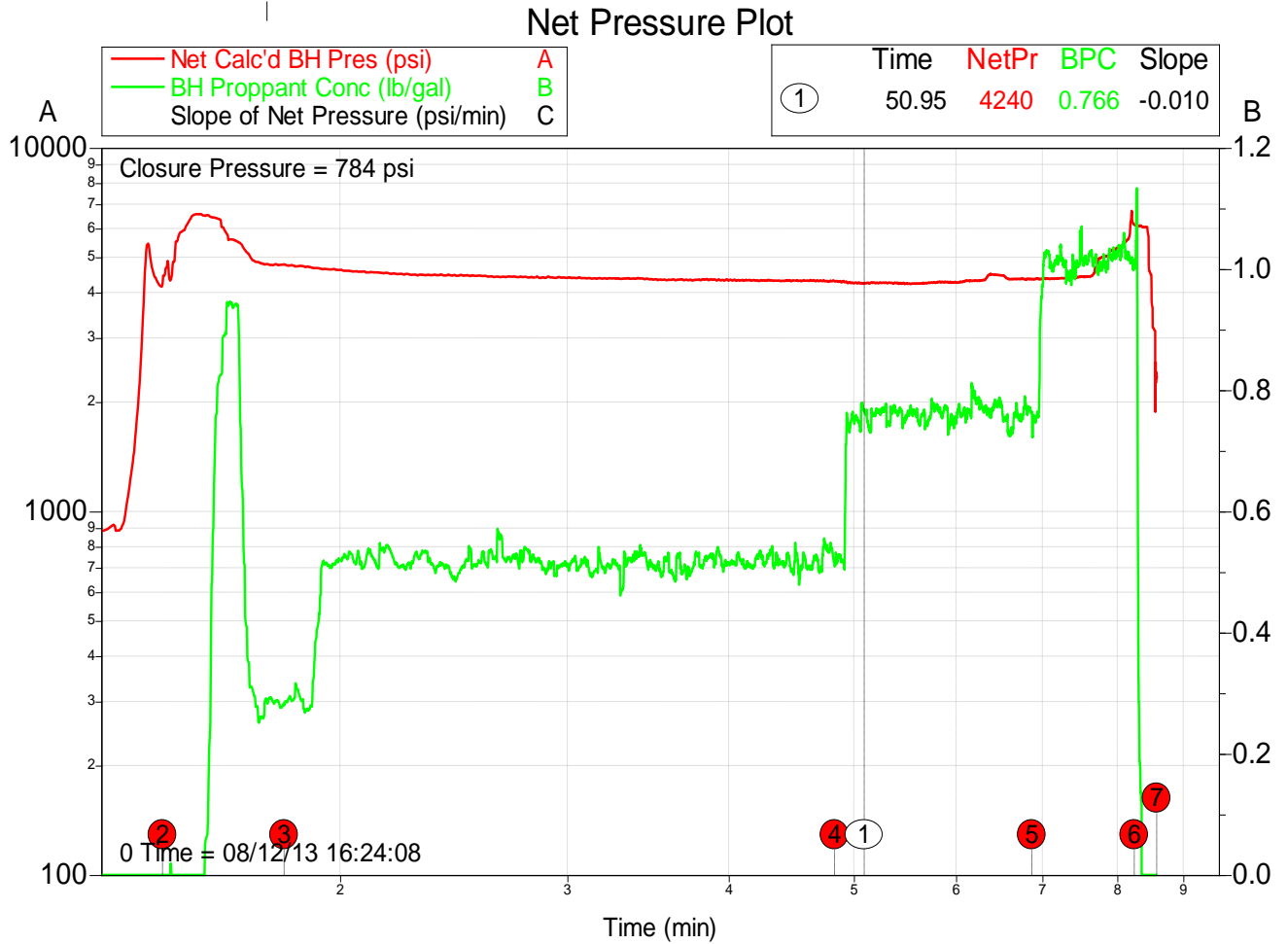


Customer: CHEVRON - MID-CONTINENT EBIZ	Job Date: 12-Aug-2013	Sales Order #: 900659002
Well Description: SKR 598-25-BV-21	UWI: 0504515430	

4.3 Averages Chart



4.4 Net Pressure Plot



Customer: CHEVRON - MID-CONTINENT EBIZ
Well Description: SKR 598-25-BV-21

Job Date: 12-Aug-2013
UWI: 0504515430

Sales Order #: 900659002