

CHEVRON - MID-CONTINENT EBIZ
760 Horizon Dr
Grand Junction, CO 81506

SKR 598-25-BV-12

Interval 1
Garfield County, Colorado

Sales Order: 900659002

Post Job Report

For: Kieth Hejl
Date: Sunday, August 11, 2013

Notice: Although the information contained in this report is based on sound engineering practices, the copyright owner(s) does (do) not accept any responsibility whatsoever, in negligence or otherwise, for any loss or damage arising from the possession or use of the report whether in terms of correctness or otherwise. The application, therefore, by the user of this report or any part thereof, is solely at the user's own risk.

HALLIBURTON

Table of Contents

1.0 Well Information 3

 1.1 Customer Information 3

 1.2 Pipe Information 4

 1.3 Perforation Intervals 4

2.0 Actual Stage Summary 5

 2.1 Stage Summary 5

3.0 Performance Highlights..... 8

 3.1 Job Summary..... 8

 3.2 Job Event Log 9

4.0 Attachments..... 10

 4.1 Treating Chart 10

 4.2 Chemical Chart 11

 4.3 Averages Chart 12

 4.4 Net Pressure Plot 13

1.0 WELL INFORMATION**1.1 Customer Information**

Customer	CHEVRON - MID-CONTINENT EBIZ
Sales Order	900659002
Well Name	SKR
Rig Type	None
Interval	1
Well Number	598-25-BV-12
Job Date	11-Aug-2013
County	Garfield
State	Colorado
UWI/API	0504515404
Country	United States of America
H2S Present	Unknown
CO2 Present	Unknown
Customer Representative	Kieth Hejl
Halliburton Representative	Swanson

1.2 Pipe Information

Equipment	Top MD ft	Bottom MD ft	OD in	ID in	Weight lb/ft
Surface Pipe	0.0	50.0	5.000	4.000	
Casing	0.0	5289.0	4.500	4.000	11.60

1.3 Perforation Intervals

Top MD ft	Bottom MD ft	Number of Shots	Perf Density spf	Perf Diameter in
4520.0	4660.0	27	0.2	0.340

2.0 ACTUAL STAGE SUMMARY

2.1 Stage Summary

Stage Number	Stage Time	Start Time	End Time	Time min	Pump Time min	Max Treat Pr psi	Max Slurry Rate bpm
1	11-Aug-13 13:29:52	13:28:16	11-Aug-13 13:29:52	1.63	1.57	5246	28.4
2	11-Aug-13 13:33:49	13:29:53	11-Aug-13 13:33:49	3.95	3.95	5235	63.8
3	11-Aug-13 14:01:22	13:33:50	11-Aug-13 14:01:22	27.54	27.53	4397	74.5
4	11-Aug-13 14:19:42	14:01:23	11-Aug-13 14:19:42	18.33	18.33	5090	64.5
5	11-Aug-13 14:32:00	14:19:43	11-Aug-13 14:32:00	12.30	12.30	5041	63.1
6	11-Aug-13 14:35:44	14:32:01	11-Aug-13 14:35:44	3.73	3.45	5111	63.1
7	11-Aug-13 14:35:59	14:35:45	11-Aug-13 14:35:59	0.25	0.00	0	0.0

Stage Number	Stage Time	Max Wellhead Rate bpm	Max Prop Conc lb/gal	Max Slurry Prop Conc lb/gal	Avg Treating Pressure psi	Avg Clean Rate bpm	Avg Slurry Rate bpm
1	11-Aug-13 13:29:52	28.4	0.00	0.00	2105	28.2	28.2
2	11-Aug-13 13:33:49	63.8	0.16	0.16	4568	55.4	55.7
3	11-Aug-13 14:01:22	74.5	0.65	0.73	3973	60.8	62.2
4	11-Aug-13 14:19:42	64.5	0.90	0.94	4234	60.8	62.9

Stage Number	Stage Time	Max Wellhead Rate bpm	Max Prop Conc lb/gal	Max Slurry Prop Conc lb/gal	Avg Treating Pressure psi	Avg Clean Rate bpm	Avg Slurry Rate bpm
5	11-Aug-13 14:32:00	63.1	1.07	1.07	4949	60.2	62.9
6	11-Aug-13 14:35:44	63.1	0.14	0.00	4044	50.1	50.1
7	11-Aug-13 14:35:59	0.0	0.00	0.00	0	0.0	0.0

Stage Number	Stage Time	Avg Wellhead Rate bpm	Avg Slurry Prop Conc lb/gal	Avg Hydraulic Horsepower hp	Clean Volume gal	Slurry Volume gal	Wellhead Volume gal
1	11-Aug-13 13:29:52	28.2	0.00	1452	1911	1911	1853
2	11-Aug-13 13:33:49	55.7	0.11	6230	9194	9236	9236
3	11-Aug-13 14:01:22	62.2	0.51	6053	70285	71909	71909
4	11-Aug-13 14:19:42	62.9	0.77	6528	46808	48450	48450
5	11-Aug-13 14:32:00	62.9	1.01	7633	31087	32512	32512
6	11-Aug-13 14:35:44	50.1	0.00	4965	7260	7260	7260
7	11-Aug-13 14:35:59	0.0	0.00	0	0	0	0
Total					166546	171278	171219

Stage Number	Stage Time	Prop Mass 100*lb
1	11-Aug-13 13:29:52	0.00

Stage Number	Stage Time	Prop Mass 100*lb
2	11-Aug-13 13:33:49	9.16
3	11-Aug-13 14:01:22	357.74
4	11-Aug-13 14:19:42	361.85
5	11-Aug-13 14:32:00	313.79
6	11-Aug-13 14:35:44	0.00
7	11-Aug-13 14:35:59	0.00
Total		1042.54

3.0 PERFORMANCE HIGHLIGHTS

3.1 Job Summary

Start Time	11-Aug-13 13:03:08	
End Time	11-Aug-13 14:35:59	

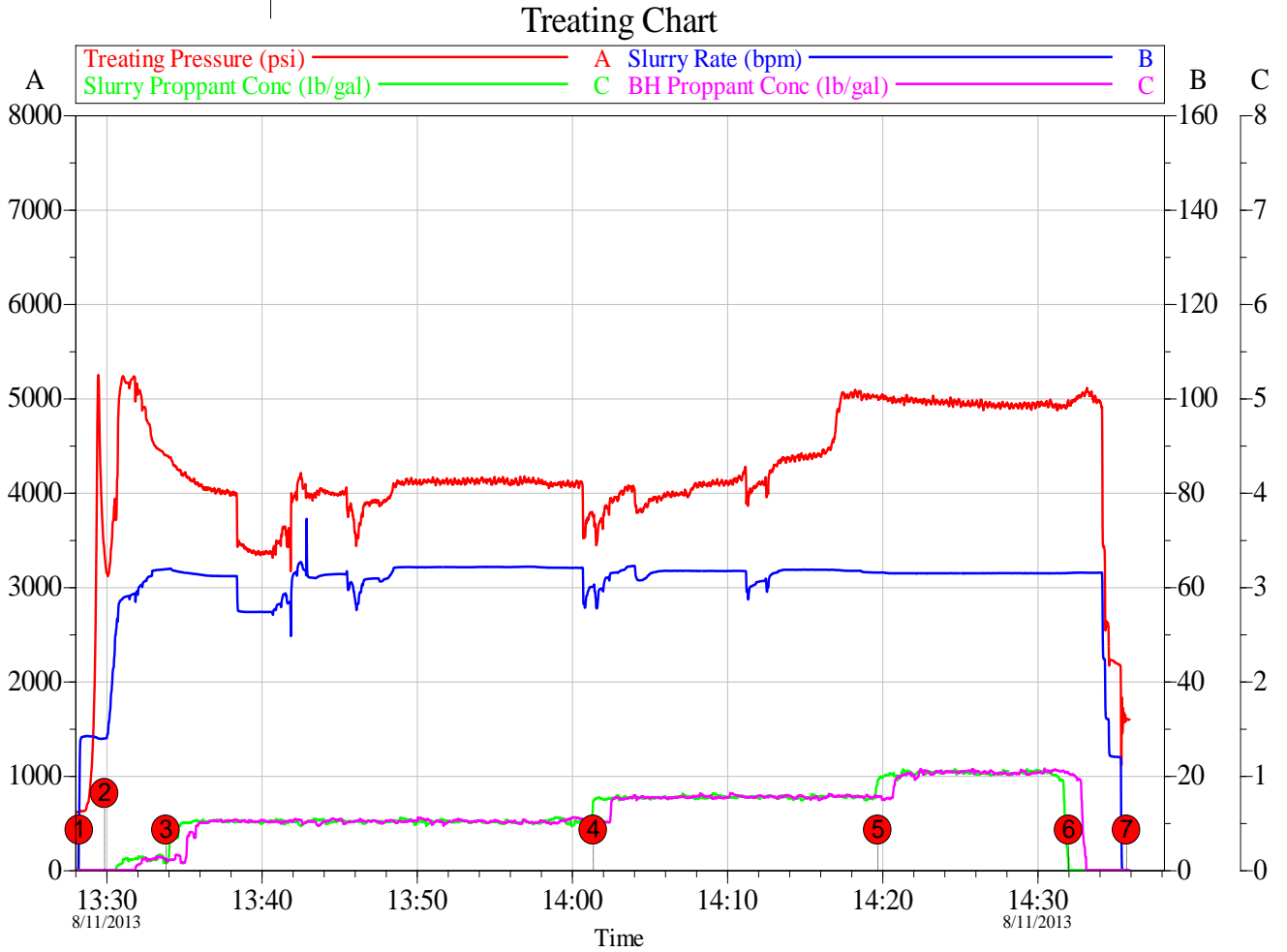
SKR 598-25-BV-12 Stage 1		
8/11/2013		
Engineering Notes		
Engineer on Location	Daniel Davis	
ISDP	1613	psi
Initial Pressure(Breakdown)	5246	psi
Max Pressure	5246	psi
Average Pressure	4281	psi
Max Rate	74.5	bpm
Average Rate	63.4	bpm
Proppant Design Volume	103,350	lbs
Proppant in Formation	1,030	lbs
FR-66 Used	33	gals
BE-7 Used	138	gals
SandWedge WF	110	lbs
SCW-4212 Used	23	gals
Clean Volume	3965	bbbls
Start Time	1:28 PM	HH:MM
End Time	2:35 PM	HH:MM
Job Notes:		
Job pumped to completion.		

3.2 Job Event Log

Stage Number	Event Number	Time	Description	Comment	Treating Pressure psi	Slurry Rate bpm	Braden Pressure psi	Job Slurry Vol gal
	1	11-Aug-13 13:03:08	Start Job	Starting Job				
1		13:28:15	Stage 1	Pad	615	14.4	6	10
		13:28:16	Start Averaging	Start Avg Trt 1	616	19.4	6	24
	2	13:29:29	Break Formation	Break Formation	5246	27.9	6	1443
2		13:29:53	Stage 2	Proppant Laden Fluid	3337	27.9	7	1911
3		13:33:50	Stage 3	Proppant Laden Fluid	4396	63.8	6	11147
	3	13:38:23	Other	Dishcharge hose on pump 7539 blew a hole. Pump taken off line. Rate brought up on other pumps while discharge hose is replaced.	3992	62.3	6	23144
4		14:01:23	Stage 4	Proppant Laden Fluid	3741	60.1	7	83056
5		14:19:43	Stage 5	Proppant Laden Fluid	5009	63.1	9	131506
6		14:32:01	Stage 6	Flush	4951	63.0	7	164017
	4	14:35:30	ISIP	ISDP = 1613 psi	1613	0.0	7	171278
7		14:35:45	Stage 7	Shut-In	1599	0.0	7	171278
		14:35:59	End Averaging	End Avg Trt 1	1590	0.0	7	171278
	5	14:36:01	End Job	Ending Job	1590	0.0	7	171278

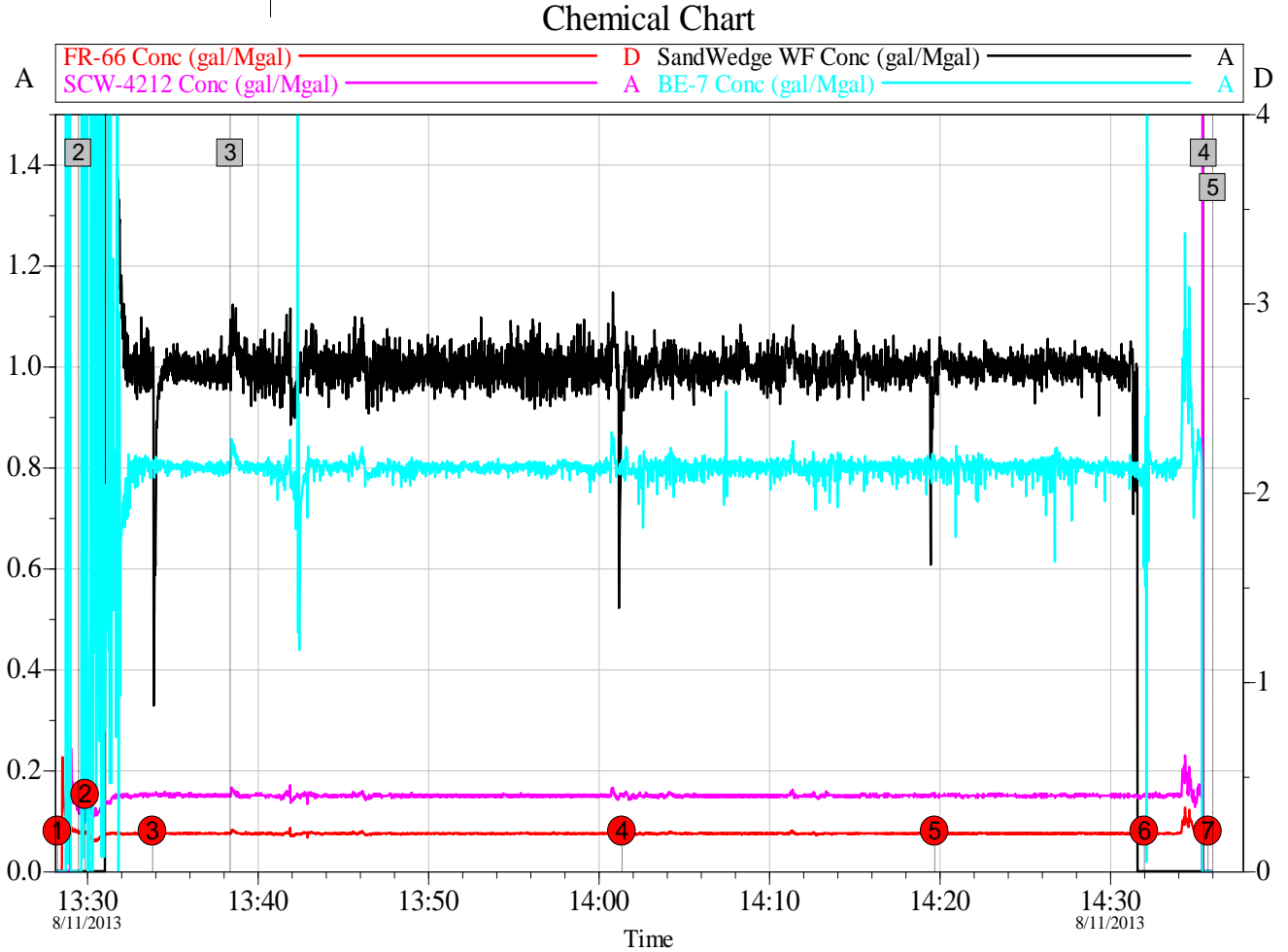
4.0 ATTACHMENTS

4.1 Treating Chart



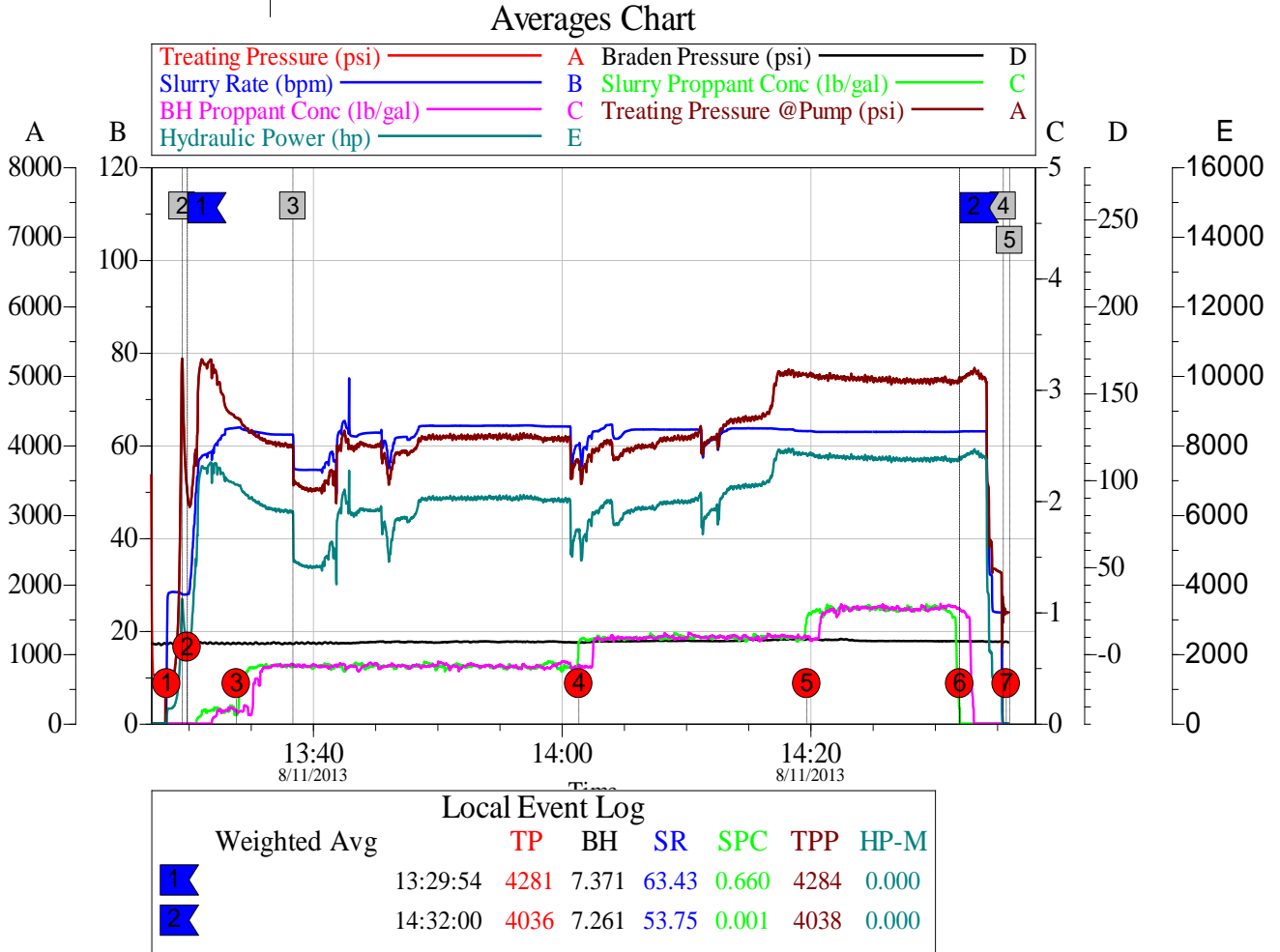
Customer: CHEVRON - MID-CONTINENT EBIZ	Job Date: 11-Aug-2013	Sales Order #: 900659002
Well Description: SKR 598-25-BV-12	UWI: 0504515404	

4.2 Chemical Chart



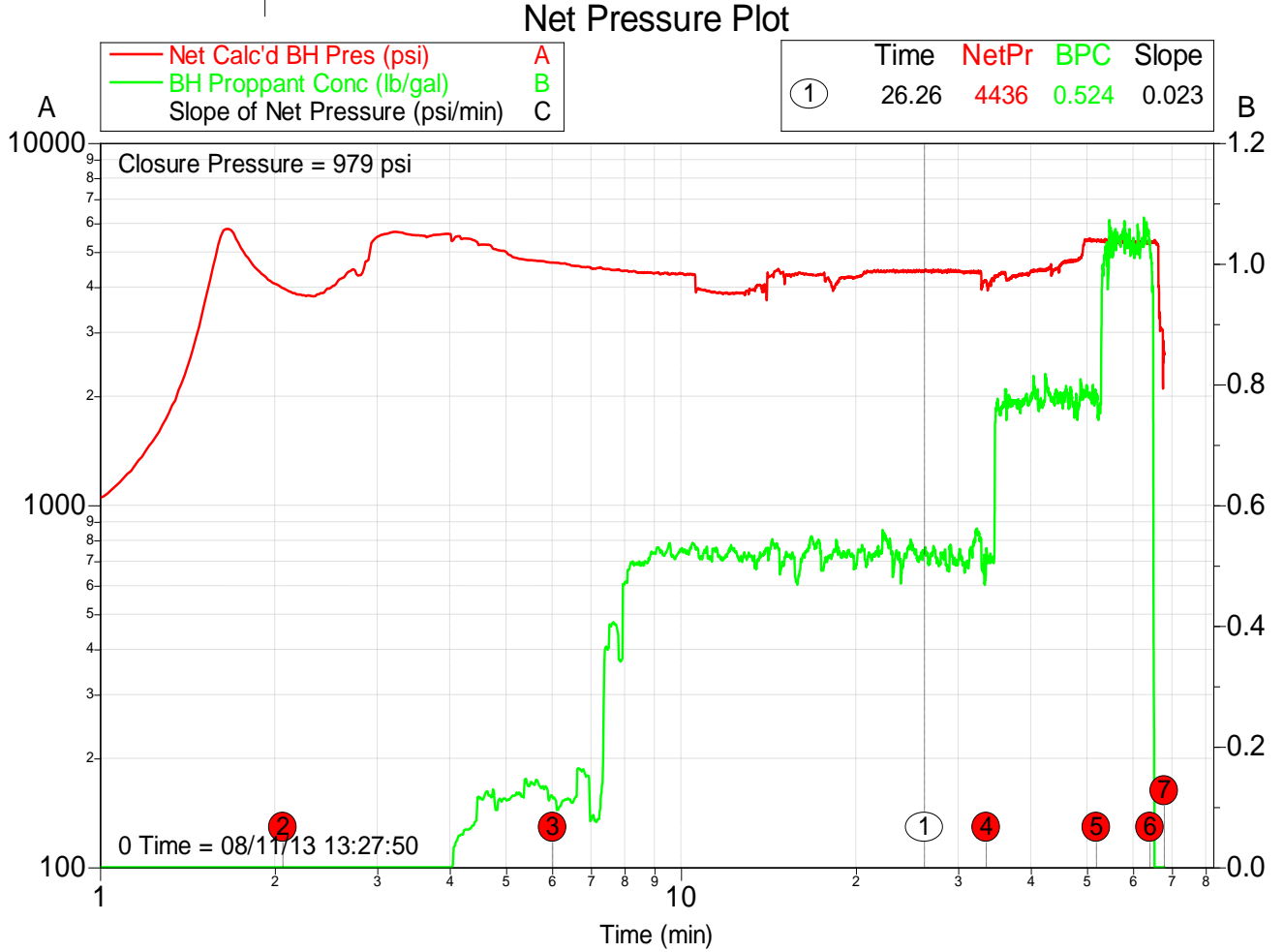
Customer: CHEVRON - MID-CONTINENT EBIZ	Job Date: 11-Aug-2013	Sales Order #: 900659002
Well Description: SKR 598-25-BV-12	UWI: 0504515404	

4.3 Averages Chart



Customer:	CHEVRON - MID-CONTINENT EBIZ	Job Date:	11-Aug-2013	Sales Order #:	900659002
Well Description:	SKR 598-25-BV-12	UWI:	0504515404		

4.4 Net Pressure Plot



Customer: CHEVRON - MID-CONTINENT EBIZ	Job Date: 11-Aug-2013	Sales Order #: 900659002
Well Description: SKR 598-25-BV-12	UWI: 0504515404	