

CHEVRON - MID-CONTINENT EBIZ
760 Horizon Dr
Grand Junction, CO 81506

SKR 598-25-BV-18

Interval 1
Garfield County, Colorado

Sales Order: 900659002

Post Job Report

For: Kieth Hejl
Date: Monday, August 12, 2013

Notice: Although the information contained in this report is based on sound engineering practices, the copyright owner(s) does (do) not accept any responsibility whatsoever, in negligence or otherwise, for any loss or damage arising from the possession or use of the report whether in terms of correctness or otherwise. The application, therefore, by the user of this report or any part thereof, is solely at the user's own risk.

HALLIBURTON

Table of Contents

1.0 Well Information 3

1.1 Customer Information 3

1.2 Pipe Information 4

1.3 Perforation Intervals 4

2.0 Actual Stage Summary 5

2.1 Stage Summary 5

3.0 Performance Highlights..... 8

3.1 Job Summary..... 8

3.2 Job Event Log 9

4.0 Attachments..... 10

4.1 Treating Chart 10

4.2 Chemical Chart 11

4.3 Averages Chart..... 12

4.4 Net Pressure Plot 13

1.0 WELL INFORMATION

1.1 Customer Information

Customer	CHEVRON - MID-CONTINENT EBIZ
Sales Order	900659002
Well Name	SKR
Rig Type	None
Interval	1
Well Number	598-25-BV-18
Job Date	12-Aug-2013
County	Garfield
State	Colorado
UWI/API	0504515427
Country	United States of America
H2S Present	Unknown
CO2 Present	Unknown
Customer Representative	Kieth Hejl
Halliburton Representative	Swanson

1.2 Pipe Information

Equipment	Top MD ft	Bottom MD ft	OD in	ID in	Weight lb/ft
Surface Pipe	0.0	50.0	5.000	4.000	
Casing	0.0	4723.0	4.500	4.000	11.60

1.3 Perforation Intervals

Top MD ft	Bottom MD ft	Number of Shots	Perf Density spf	Perf Diameter in
4466.0	4673.0	27	0.1	0.340

2.0 ACTUAL STAGE SUMMARY

2.1 Stage Summary

Stage Number	Stage Time	Start Time	End Time	Time min	Pump Time min	Max Treat Pr psi	Max Slurry Rate bpm
1	12-Aug-13 10:46:37	10:45:13	12-Aug-13 10:46:37	1.42	1.28	4997	48.3
2	12-Aug-13 10:49:26	10:46:38	12-Aug-13 10:49:26	2.82	2.82	6187	63.4
3	12-Aug-13 11:13:08	10:49:27	12-Aug-13 11:13:08	23.70	23.70	5954	64.0
4	12-Aug-13 11:29:07	11:13:09	12-Aug-13 11:29:07	15.99	15.98	4489	63.9
5	12-Aug-13 11:40:30	11:29:08	12-Aug-13 11:40:30	11.38	11.38	4626	63.8
6	12-Aug-13 11:44:02	11:40:31	12-Aug-13 11:44:02	3.53	3.25	4638	63.7
7	12-Aug-13 11:44:09	11:44:03	12-Aug-13 11:44:09	0.12	0.00	0	0.0

Stage Number	Stage Time	Max Wellhead Rate bpm	Max Prop Conc lb/gal	Max Slurry Prop Conc lb/gal	Avg Treating Pressure psi	Avg Clean Rate bpm	Avg Slurry Rate bpm
1	12-Aug-13 10:46:37	48.3	1.09	1.08	2918	32.5	32.8
2	12-Aug-13 10:49:26	63.4	0.32	0.34	5673	58.3	58.9
3	12-Aug-13 11:13:08	64.0	0.63	0.66	4755	62.4	63.8
4	12-Aug-13 11:29:07	63.9	0.88	0.88	4400	61.7	63.8

Stage Number	Stage Time	Max Wellhead Rate bpm	Max Prop Conc lb/gal	Max Slurry Prop Conc lb/gal	Avg Treating Pressure psi	Avg Clean Rate bpm	Avg Slurry Rate bpm
5	12-Aug-13 11:40:30	63.8	1.04	1.04	4510	61.0	63.7
6	12-Aug-13 11:44:02	63.7	0.13	0.00	3816	52.0	52.0
7	12-Aug-13 11:44:09	0.0	0.00	0.00	0	0.0	0.0

Stage Number	Stage Time	Avg Wellhead Rate bpm	Avg Slurry Prop Conc lb/gal	Avg Hydraulic Horsepower hp	Clean Volume gal	Slurry Volume gal	Wellhead Volume gal
1	12-Aug-13 10:46:37	32.8	0.38	2343	1810	1823	1767
2	12-Aug-13 10:49:26	58.9	0.22	8190	6902	6971	6971
3	12-Aug-13 11:13:08	63.8	0.51	7434	62095	63521	63521
4	12-Aug-13 11:29:07	63.8	0.75	6881	41438	42851	42851
5	12-Aug-13 11:40:30	63.7	0.97	7035	29158	30437	30437
6	12-Aug-13 11:44:02	52.0	0.00	4860	7095	7095	7095
7	12-Aug-13 11:44:09	0.0	0.00	0	0	0	0
Total					148498	152699	152642

Stage Number	Stage Time	Prop Mass 100*lb
1	12-Aug-13 10:46:37	2.86

Stage Number	Stage Time	Prop Mass 100*lb
2	12-Aug-13 10:49:26	15.26
3	12-Aug-13 11:13:08	314.23
4	12-Aug-13 11:29:07	311.30
5	12-Aug-13 11:40:30	281.81
6	12-Aug-13 11:44:02	0.00
7	12-Aug-13 11:44:09	0.00
Total		925.46

3.0 PERFORMANCE HIGHLIGHTS

3.1 Job Summary

Start Time	12-Aug-13 10:19:07	
End Time	12-Aug-13 11:44:09	

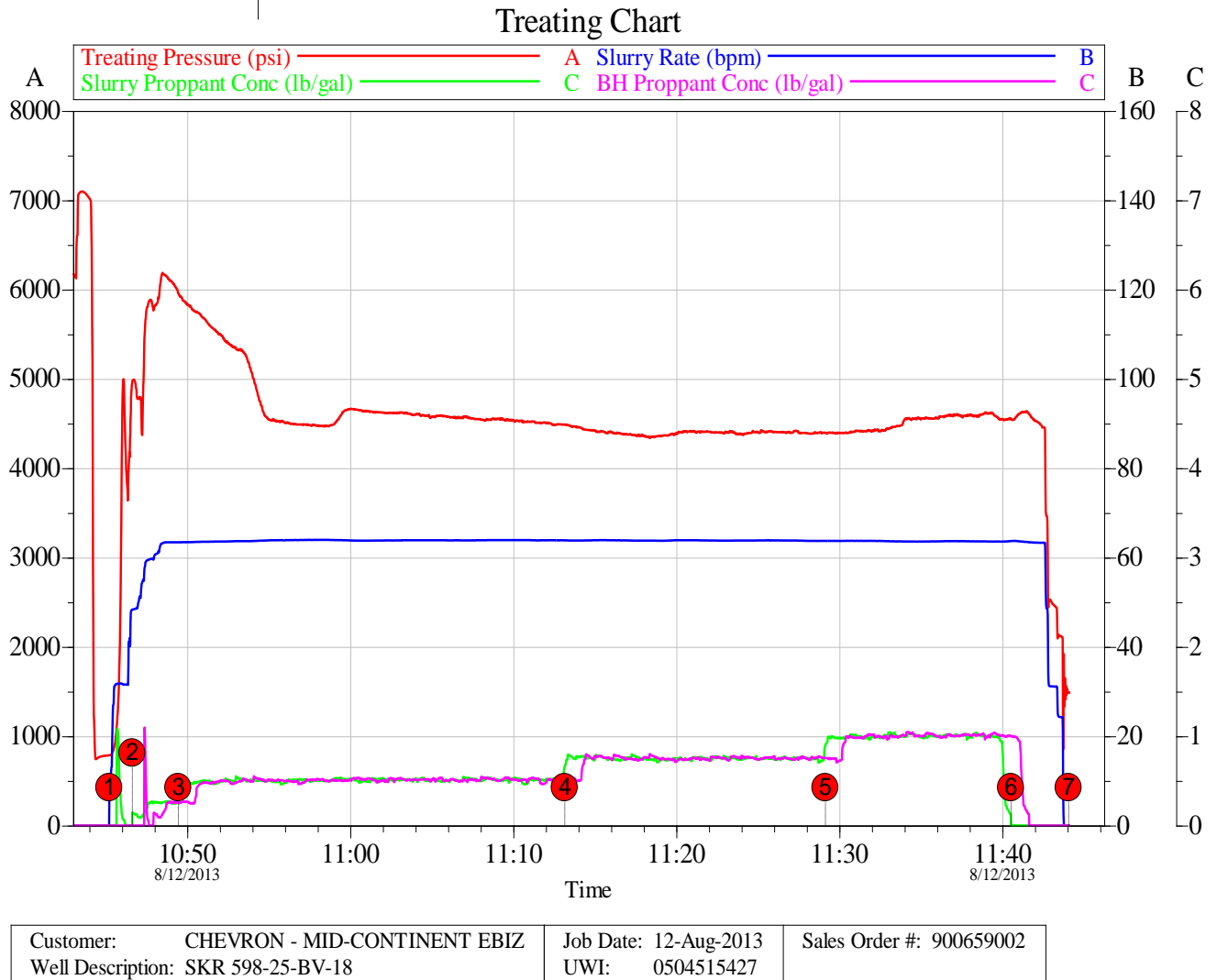
SKR 598-25-BV-18 Stage 1		
8/12/2013		
Engineering Notes		
Engineer on Location	Drew Mogck	
ISDP	1526	psi
Initial Pressure(Breakdown)	4996	psi
Max Pressure	6187	psi
Average Pressure	4646	psi
Max Rate	63.95	bpm
Average Rate	63.8	bpm
Proppant Design Volume	91,425	lbs
Proppant in Formation	91,500	lbs
FR-66 Used	33	gals
BE-7 Used	128	gals
SandWedge WF	98	lbs
SCW-4212 Used	20	gals
Clean Volume	3536	bbls
Start Time	10:45 AM	HH:MM
End Time	11:43 AM	HH:MM
Job Notes:		
Pumped to completion		

3.2 Job Event Log

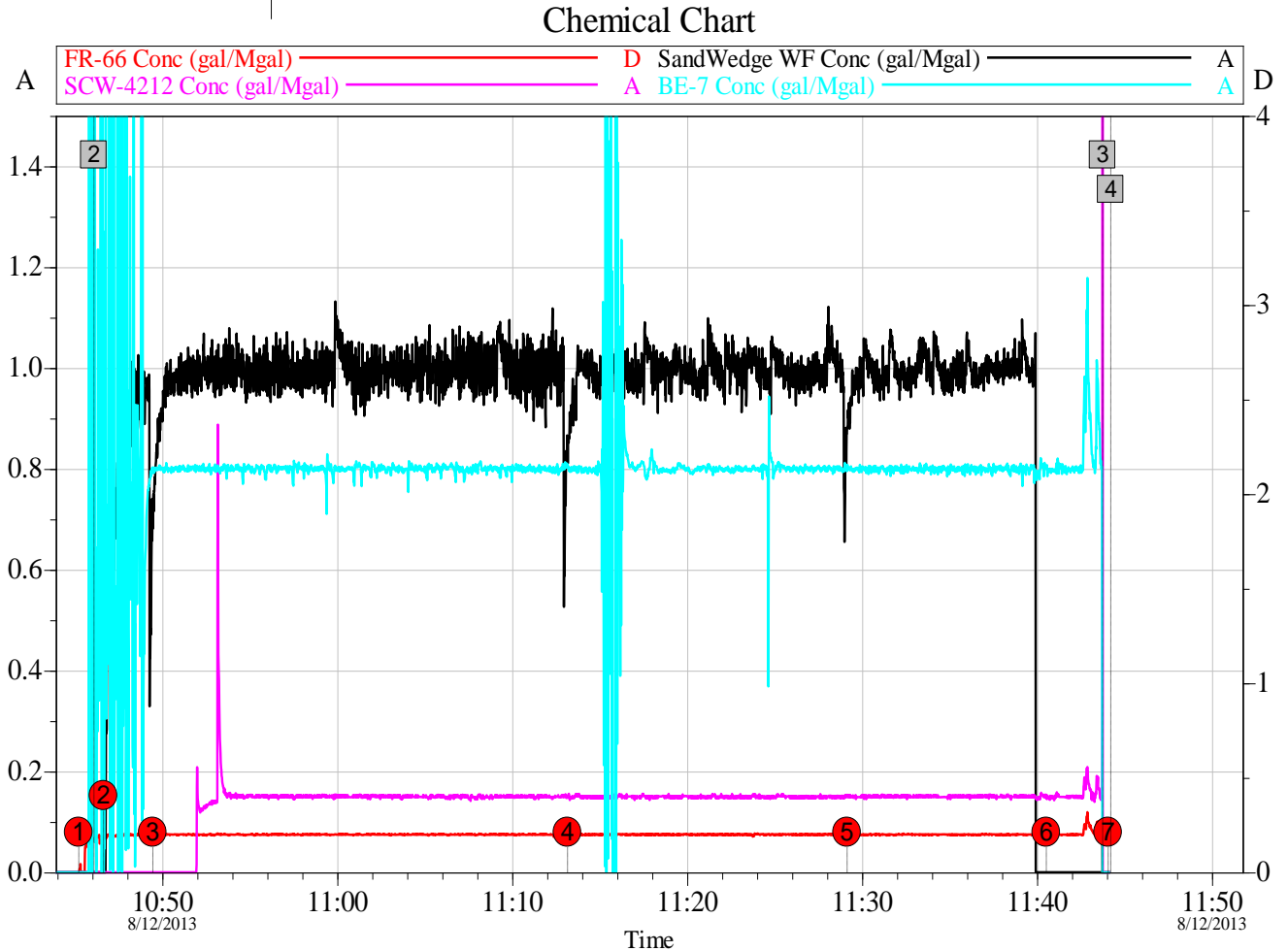
Stage Number	Event Number	Time	Description	Comment	Treating Pressure psi	Slurry Rate bpm	Braden Pressure psi	Job Slurry Vol gal
	1	12-Aug-13 10:19:07	Start Job	Starting Job				
1		10:45:13	Stage 1	Pad	786	5.7	9	4
		10:45:14	Start Averaging	Start Avg Trt 1	787	5.7	9	4
	2	10:46:05	Break Formation	Break Formation=4996 psi, 3159 bpm	4996	31.6	10	966
2		10:46:38	Stage 2	Proppant Laden Fluid	4975	48.3	10	1823
3		10:49:27	Stage 3	Proppant Laden Fluid	5954	63.4	11	8794
4		11:13:09	Stage 4	Proppant Laden Fluid	4488	63.8	11	72315
5		11:29:08	Stage 5	Proppant Laden Fluid	4397	63.7	9	115166
6		11:40:31	Stage 6	Flush	4555	63.7	8	145604
	3	11:43:45	ISIP	ISDP=1526 psi	1542	2.3	7	152698
7		11:44:03	Stage 7	Shut-In	1491	0.0	7	152699
		11:44:09	End Averaging	End Avg Trt 1	1489	0.0	7	152699
	4	11:44:12	End Job	Ending Job	1489	0.0	7	152699

4.0 ATTACHMENTS

4.1 Treating Chart

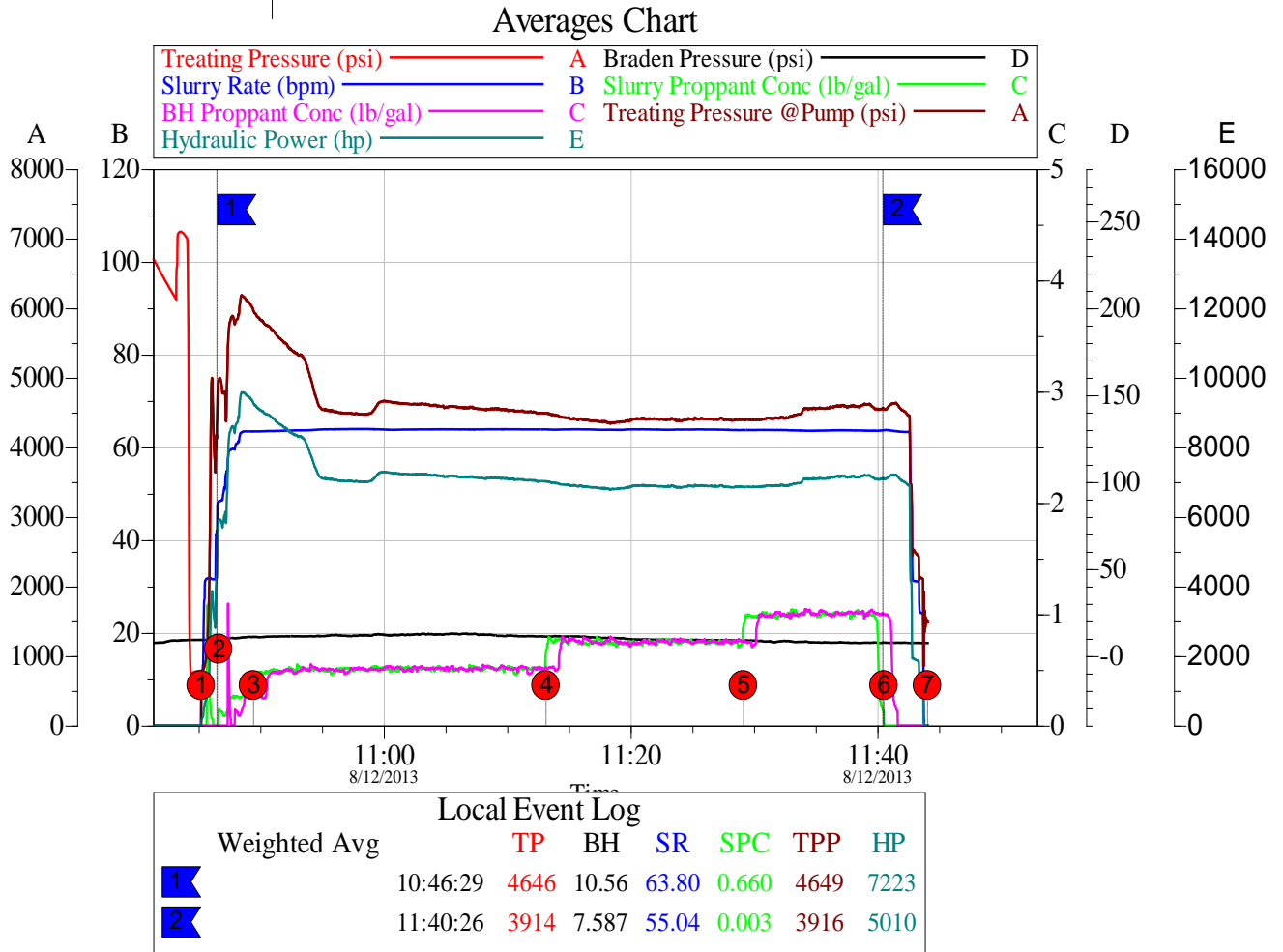


4.2 Chemical Chart



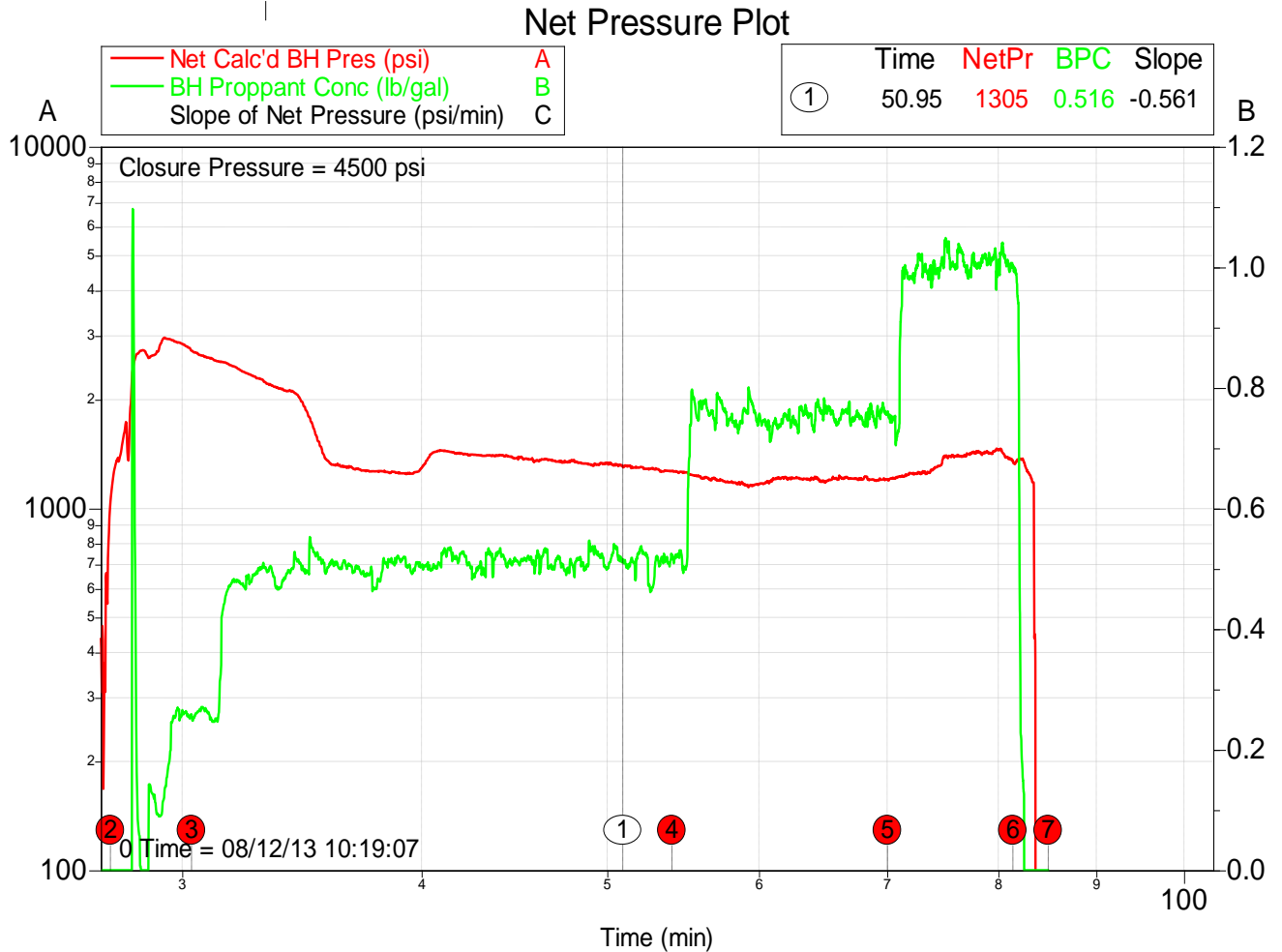
Customer: CHEVRON - MID-CONTINENT EBIZ	Job Date: 12-Aug-2013	Sales Order #: 900659002
Well Description: SKR 598-25-BV-18	UWI: 0504515427	

4.3 Averages Chart



Customer:	CHEVRON - MID-CONTINENT EBIZ	Job Date:	12-Aug-2013	Sales Order #:	900659002
Well Description:	SKR 598-25-BV-18	UWI:	0504515427		

4.4 Net Pressure Plot



Customer: CHEVRON - MID-CONTINENT EBIZ
Well Description: SKR 598-25-BV-18

Job Date: 12-Aug-2013
UWI: 0504515427

Sales Order #: 900659002