

**CHEVRON - MID-CONTINENT EBIZ**  
**760 Horizon Dr**  
**Grand Junction, CO 81506**

**SKR 598-25-BV-16**

**Interval 1**  
**Garfield County, Colorado**

**Sales Order: 900659002**

## **Post Job Report**

**For: Kieth Hejl**  
**Date: Monday, August 12, 2013**

Notice: Although the information contained in this report is based on sound engineering practices, the copyright owner(s) does (do) not accept any responsibility whatsoever, in negligence or otherwise, for any loss or damage arising from the possession or use of the report whether in terms of correctness or otherwise. The application, therefore, by the user of this report or any part thereof, is solely at the user's own risk.

**HALLIBURTON**

Table of Contents

1.0 Well Information ..... 3

1.1 Customer Information ..... 3

1.2 Pipe Information ..... 4

1.3 Perforation Intervals ..... 4

2.0 Actual Stage Summary ..... 5

2.1 Stage Summary ..... 5

3.0 Performance Highlights..... 8

3.1 Job Summary..... 8

3.2 Job Event Log ..... 9

4.0 Attachments..... 10

4.1 Treating Chart ..... 10

4.2 Chemical Chart ..... 11

4.3 Averages Chart..... 12

4.4 Net Pressure Plot ..... 13

## 1.0 WELL INFORMATION

### 1.1 Customer Information

Customer	CHEVRON - MID-CONTINENT EBIZ
Sales Order	900659002
Well Name	SKR
Rig Type	None
Interval	1
Well Number	598-25-BV-16
Job Date	12-Aug-2013
County	Garfield
State	Colorado
UWI/API	0504515425
Country	United States of America
H2S Present	Unknown
CO2 Present	Unknown
Customer Representative	Kieth Hejl
Halliburton Representative	Swanson

## 1.2 Pipe Information

Equipment	Top MD ft	Bottom MD ft	OD in	ID in	Weight lb/ft
Surface Pipe	0.0	50.0	5.000	4.000	
Casing	0.0	5192.0	4.500	4.000	11.60

## 1.3 Perforation Intervals

Top MD ft	Bottom MD ft	Number of Shots	Perf Density spf	Perf Diameter in
4953.0	5142.0	27	0.1	0.340

## 2.0 ACTUAL STAGE SUMMARY

### 2.1 Stage Summary

Stage Number	Stage Time	Start Time	End Time	Time min	Pump Time min	Max Treat Pr psi	Max Slurry Rate bpm
1	12-Aug-13 09:12:50	09:10:48	12-Aug-13 09:12:50	2.07	1.57	5598	41.6
2	12-Aug-13 09:15:46	09:12:51	12-Aug-13 09:15:46	2.93	2.93	6290	64.2
3	12-Aug-13 09:40:11	09:15:47	12-Aug-13 09:40:11	24.42	24.42	5084	64.6
4	12-Aug-13 09:56:45	09:40:12	12-Aug-13 09:56:45	16.57	16.57	4769	64.6
5	12-Aug-13 10:08:32	09:56:46	12-Aug-13 10:08:32	11.78	11.78	5922	64.1
6	12-Aug-13 10:12:01	10:08:33	12-Aug-13 10:12:01	3.48	3.32	6125	63.7
7	12-Aug-13 10:12:02	10:12:02	12-Aug-13 10:12:02	0.02	0.00	0	0.0

Stage Number	Stage Time	Max Wellhead Rate bpm	Max Prop Conc lb/gal	Max Slurry Prop Conc lb/gal	Avg Treating Pressure psi	Avg Clean Rate bpm	Avg Slurry Rate bpm
1	12-Aug-13 09:12:50	41.6	0.16	0.16	3371	26.8	26.8
2	12-Aug-13 09:15:46	64.2	0.16	0.17	5546	58.8	59.1
3	12-Aug-13 09:40:11	64.6	0.60	0.63	4426	63.2	64.5
4	12-Aug-13 09:56:45	64.6	0.81	0.81	4530	62.1	64.2

Stage Number	Stage Time	Max Wellhead Rate bpm	Max Prop Conc lb/gal	Max Slurry Prop Conc lb/gal	Avg Treating Pressure psi	Avg Clean Rate bpm	Avg Slurry Rate bpm
5	12-Aug-13 10:08:32	64.1	1.25	1.25	4868	61.3	64.0
6	12-Aug-13 10:12:01	63.7	0.09	0.00	5087	53.4	53.4
7	12-Aug-13 10:12:02	0.0	0.00	0.00	0	0.0	0.0

Stage Number	Stage Time	Avg Wellhead Rate bpm	Avg Slurry Prop Conc lb/gal	Avg Hydraulic Horsepower hp	Clean Volume gal	Slurry Volume gal	Wellhead Volume gal
1	12-Aug-13 09:12:50	26.8	0.11	2213	1823	1824	1763
2	12-Aug-13 09:15:46	59.1	0.11	8029	7249	7280	7280
3	12-Aug-13 09:40:11	64.5	0.45	6994	64799	66131	66131
4	12-Aug-13 09:56:45	64.2	0.76	7130	43213	44702	44702
5	12-Aug-13 10:08:32	64.0	0.97	7633	30334	31666	31666
6	12-Aug-13 10:12:01	53.4	0.00	6652	7434	7434	7434
7	12-Aug-13 10:12:02	0.0	0.00	0	0	0	0
Total					154852	159037	158976

Stage Number	Stage Time	Prop Mass 100*lb
1	12-Aug-13 09:12:50	0.22

---

Stage Number	Stage Time	Prop Mass 100*lb
2	12-Aug-13 09:15:46	6.63
3	12-Aug-13 09:40:11	293.55
4	12-Aug-13 09:56:45	328.17
5	12-Aug-13 10:08:32	293.38
6	12-Aug-13 10:12:01	0.00
7	12-Aug-13 10:12:02	0.00
Total		921.94

### 3.0 PERFORMANCE HIGHLIGHTS

#### 3.1 Job Summary

Start Time	12-Aug-13 08:41:50	
End Time	12-Aug-13 10:12:02	

SKR 598-25-BV-16 Stage 1		
8/12/2013		
Engineering Notes		
Engineer on Location	Drew Mogck	
ISDP	2005	psi
Initial Pressure(Breakdown)	5595	psi
Max Pressure	6290	psi
Average Pressure	4603	psi
Max Rate	64.59	bpm
Average Rate	64.27	bpm
Proppant Design Volume	95,400	lbs
Proppant in Formation	96,000	lbs
FR-66 Used	33	gals
BE-7 Used	147	gals
SandWedge WF	100	lbs
SCW-4212 Used	22	gals
Clean Volume	3686	bbls
Start Time	9:10 AM	HH:MM
End Time	10:12 AM	HH:MM
Job Notes:		
Pumped to completion		

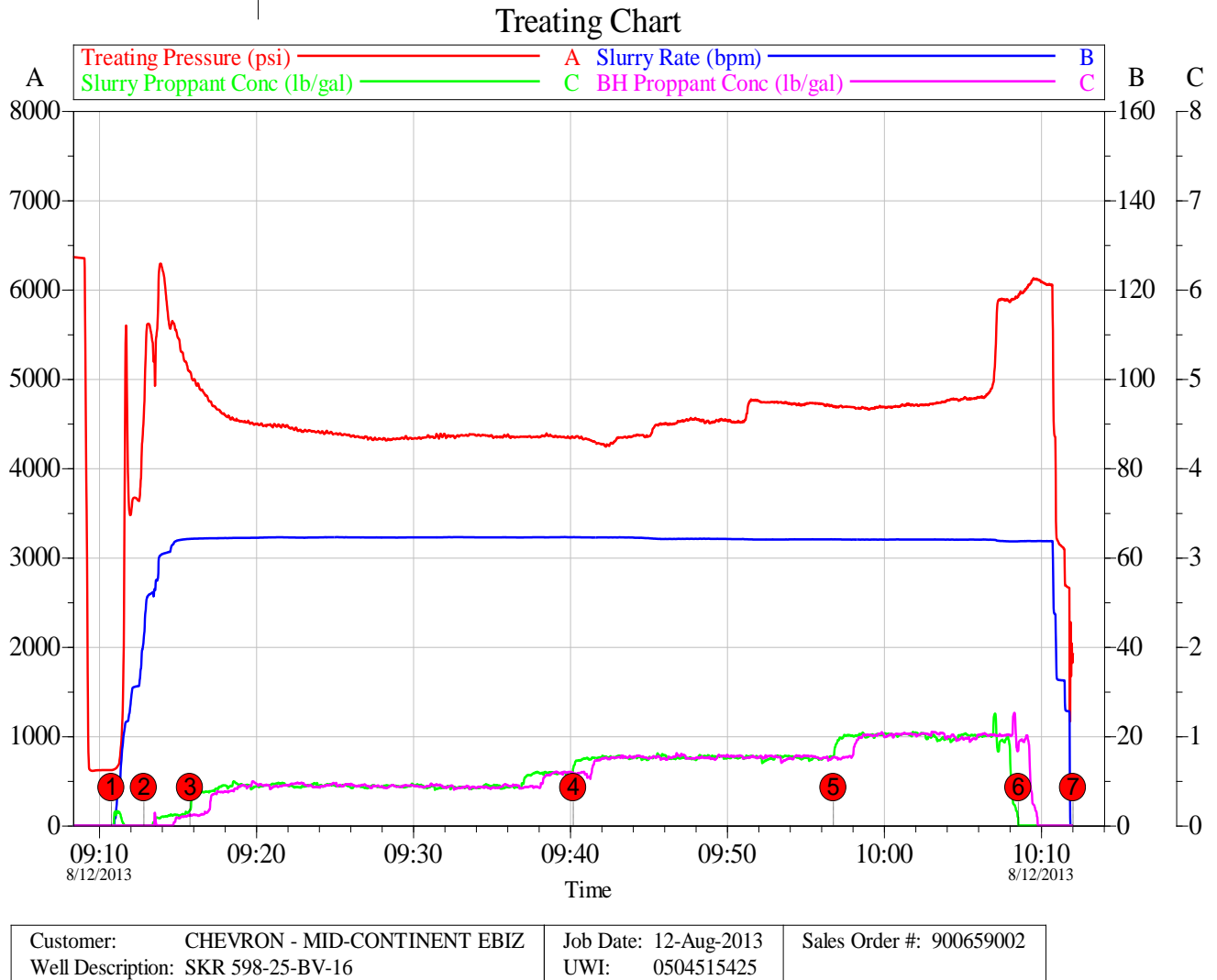


## 3.2 Job Event Log

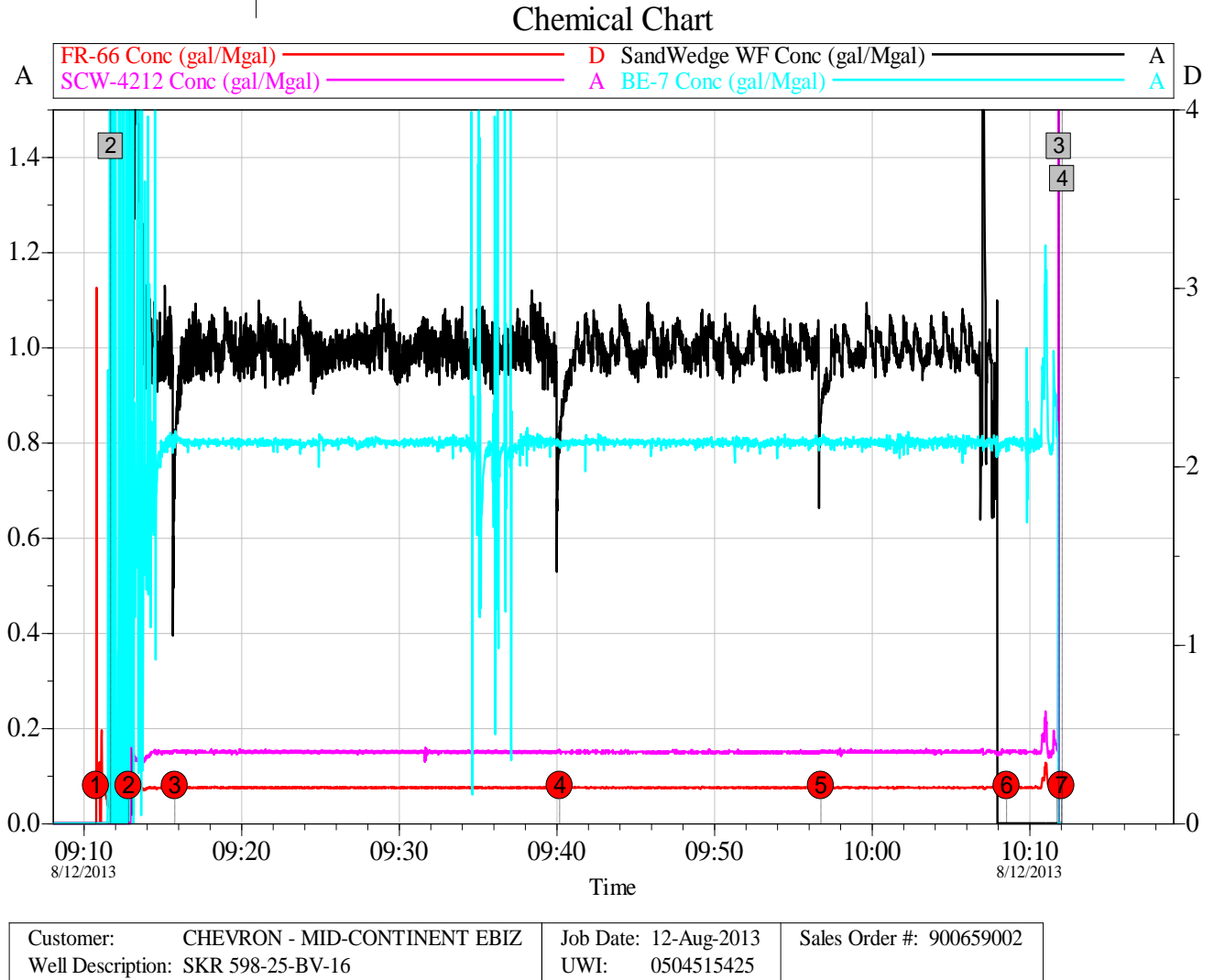
Stage Number	Event Number	Time	Description	Comment	Treating Pressure psi	Slurry Rate bpm	Braden Pressure psi	Job Slurry Vol gal
	1	12-Aug-13 08:41:50	Start Job	Starting Job				
1		09:10:47	Stage 1	Pad	621	0.0	5	0
		09:10:48	Start Averaging	Start Avg Trt 1	621	0.0	5	0
	2	09:11:43	Break Formation	Break Formation=5595 psi, 23.2 bpm	5595	23.2	6	384
2		09:12:51	Stage 2	Proppant Laden Fluid	4612	41.6	6	1824
3		09:15:47	Stage 3	Proppant Laden Fluid	5084	64.2	6	9104
4		09:40:12	Stage 4	Proppant Laden Fluid	4345	64.6	5	75235
5		09:56:46	Stage 5	Proppant Laden Fluid	4690	64.1	2	119937
6		10:08:33	Stage 6	Flush	5924	63.6	-0	151603
	3	10:11:52	ISIP	ISDP=2005 psi	1981	1.8	-1	159037
7		10:12:02	Stage 7	Shut-In	1931	0.0	-1	159037
		10:12:02	End Averaging	End Avg Trt 1	1931	0.0	-1	159037
	4	10:12:05	End Job	Ending Job	1931	0.0	-1	159037

## 4.0 ATTACHMENTS

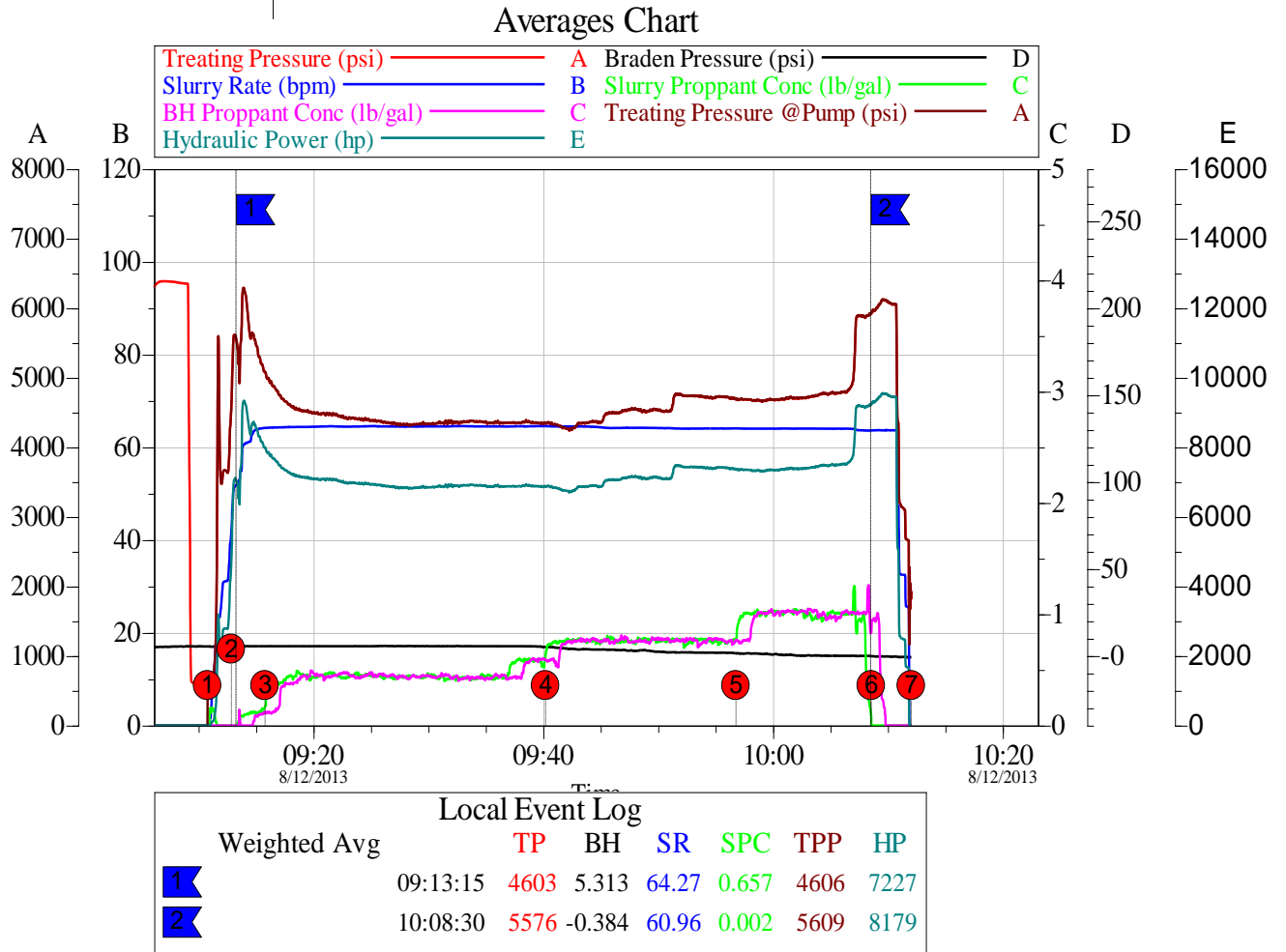
### 4.1 Treating Chart



## 4.2 Chemical Chart

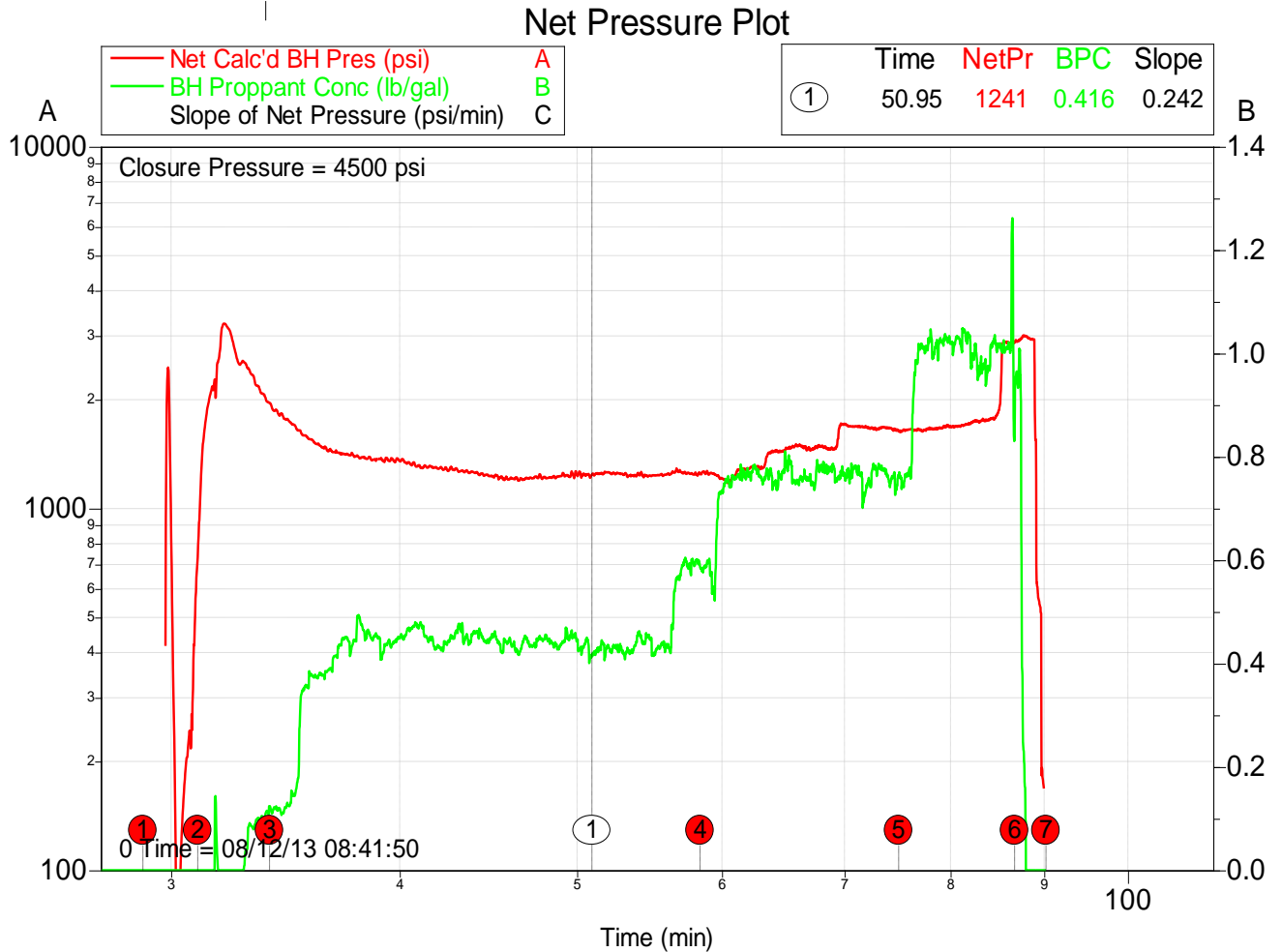


## 4.3 Averages Chart



Customer:	CHEVRON - MID-CONTINENT EBIZ	Job Date:	12-Aug-2013	Sales Order #:	900659002
Well Description:	SKR 598-25-BV-16	UWI:	0504515425		

## 4.4 Net Pressure Plot



Customer: CHEVRON - MID-CONTINENT EBIZ  
Well Description: SKR 598-25-BV-16

Job Date: 12-Aug-2013  
UWI: 0504515425

Sales Order #: 900659002