



SUPERIOR
Hays,
Kansas

SONIC
LOG

Company	MULL DRILLING COMPANY, INC.
Well	MCBRIDE-MICHEL "A" #1-31
Field	
County	KIOWA
State	COLORADO
Company	MULL DRILLING COMPANY, INC.
Well	MCBRIDE-MICHEL "A" #1-31
Field	
County	KIOWA
State	COLORADO
Location:	API # : 05-061-06867-0000 605' FNL & 2400' FEL NW/4 - NE/4
Permanent Datum	GROUND LEVEL
Log Measured From	KELLY BUSHING 11' A.G.L.
Drilling Measured From	KELLY BUSHING
SEC 31 TWP 18S RGE 45W	
Elevation	3904
Other Services	CDL/CNL/PE DIL/MEL
Date	1/28/12
Run Number	TWO
Depth Driller	4918
Depth Logger	4917
Bottom Logged Interval	4910
Top Log Interval	300
Casing Driller	8 5/8"@355'
Casing Logger	353'
Bit Size	7 7/8"
Type Fluid in Hole	CHEMICAL MUD
Density / Viscosity	9.3/50
pH / Fluid Loss	9.0/8.0
Source of Sample	FLOWLINE
Rm @ Meas. Temp	0.85@70F
Rmt @ Meas. Temp	0.64@70F
Rmc @ Meas. Temp	1.02@70F
Source of Rmt / Rmc	MEASUREMENT
Rm @ BHT	0.48@124F
Time Circulation Stopped	2 HOURS
Time Logger on Bottom	
Maximum Recorded Temperature	124F
Equipment Number	4010
Location	HAYS, KANSAS
Recorded By	JEFF GRONEWEG
Witnessed By	PHIL ASKEY

<<< Fold Here >>>

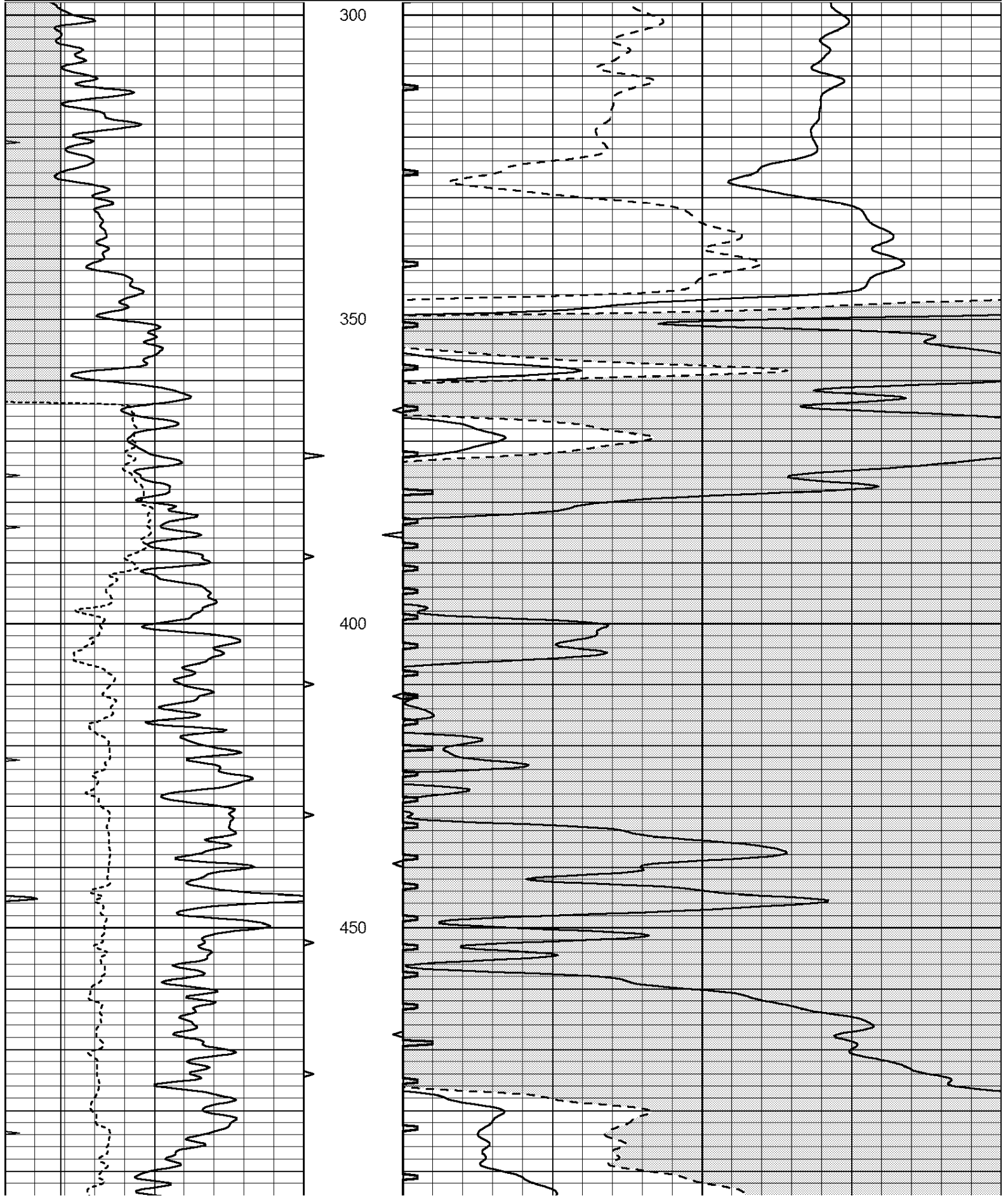
All interpretations are opinions based on inferences from electrical or other measurements and we cannot and do not guarantee the accuracy or correctness of any interpretation, and we shall not, except in the case of gross or willful negligence on our part, be liable or responsible for any loss, costs, damages, or expenses incurred or sustained by anyone resulting from any interpretation made by any of our officers, agents or employees. These interpretations are also subject to our general terms and conditions set out in our current Price Schedule.

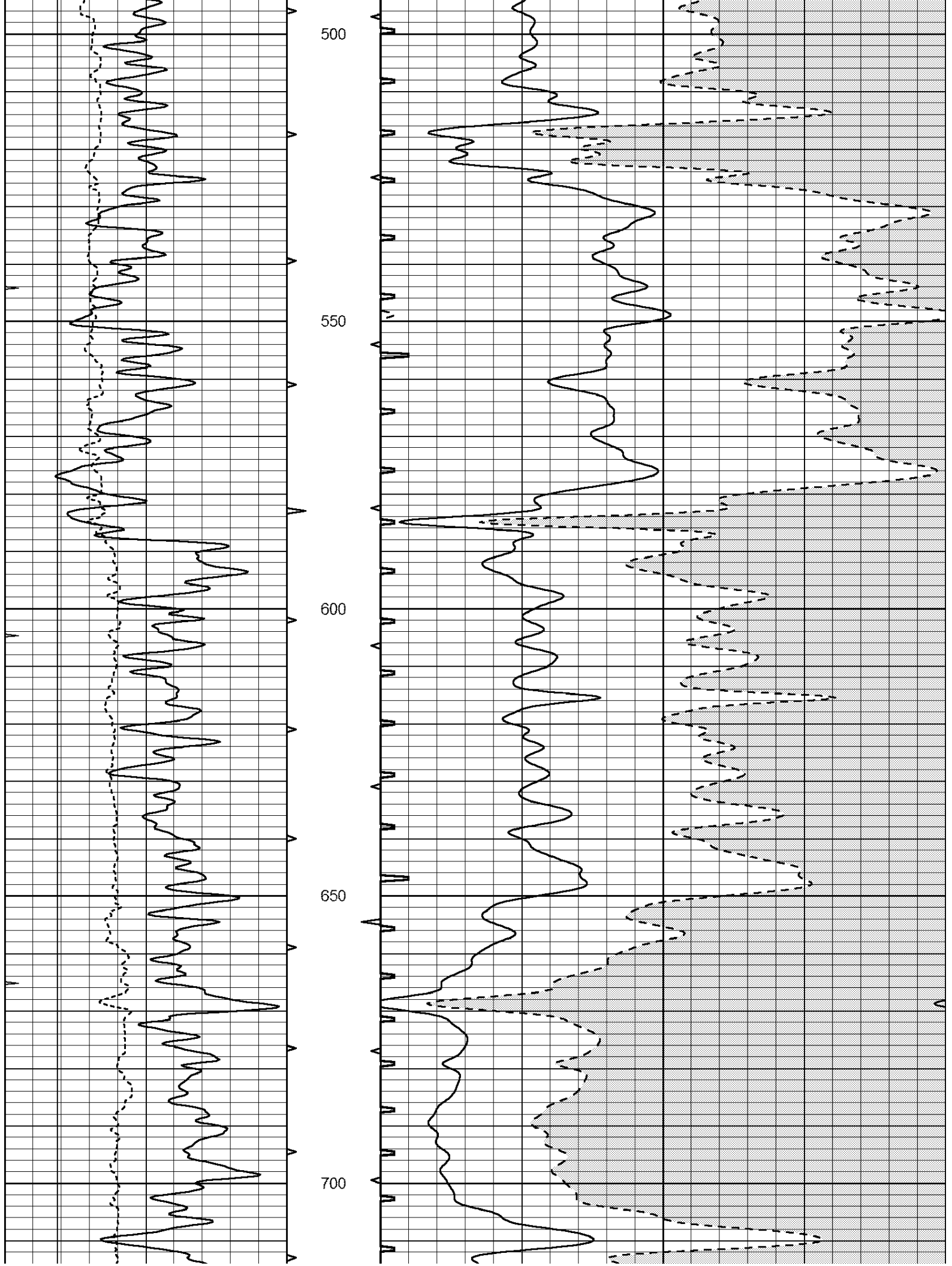
Comments

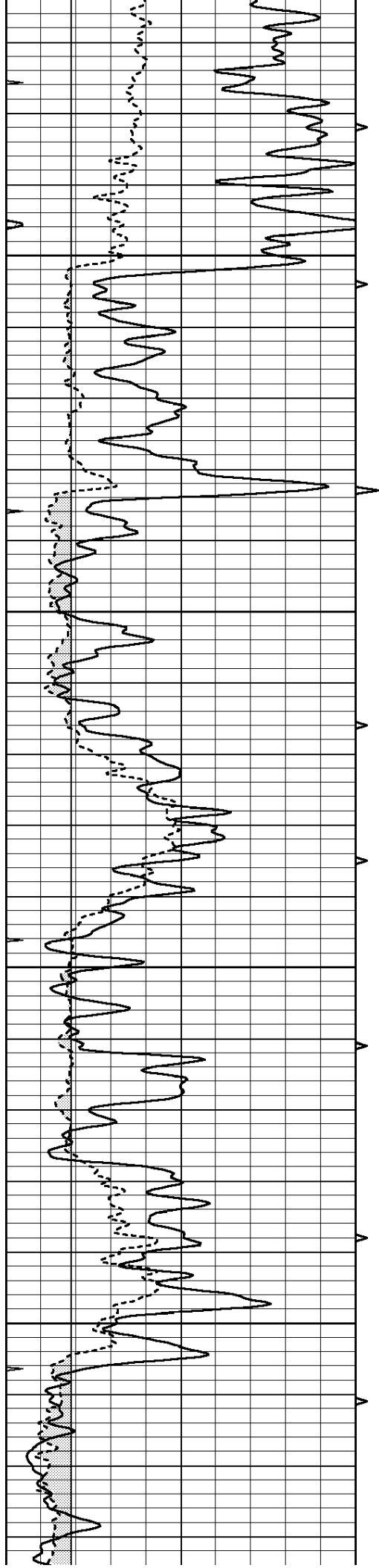
THANK YOU FOR USING SUPERIOR WELL SERVICE HAYS, KANSAS (785) 628-6395
DIRECTIONS
BRANDON, CO - 5 MILES WEST TO RD 54 - 1/8 MILE NORTH
EAST INTO 2 1/2 MILES

Database File: 008150pe.db
Dataset Pathname: pass6
Presentation Format: _slt
Dataset Creation: Sat Jan 28 09:04:55 2012 by Log Open-Cased 110302
Charted by: Depth in Feet scaled 1:240

Charted by:		Depth in Feet scaled 1:12.10				
0	GAMMA RAY (GAPI)	150	ABHV	140	DELTA TIME (usec/ft)	40
6	CALIPER (in)	16	10 (ft3) 0	30	SONIC POROSITY (pu)	-10
0	MINMK	20	TBHV	0	ITT (msec)	20
			0 (ft3) 10			





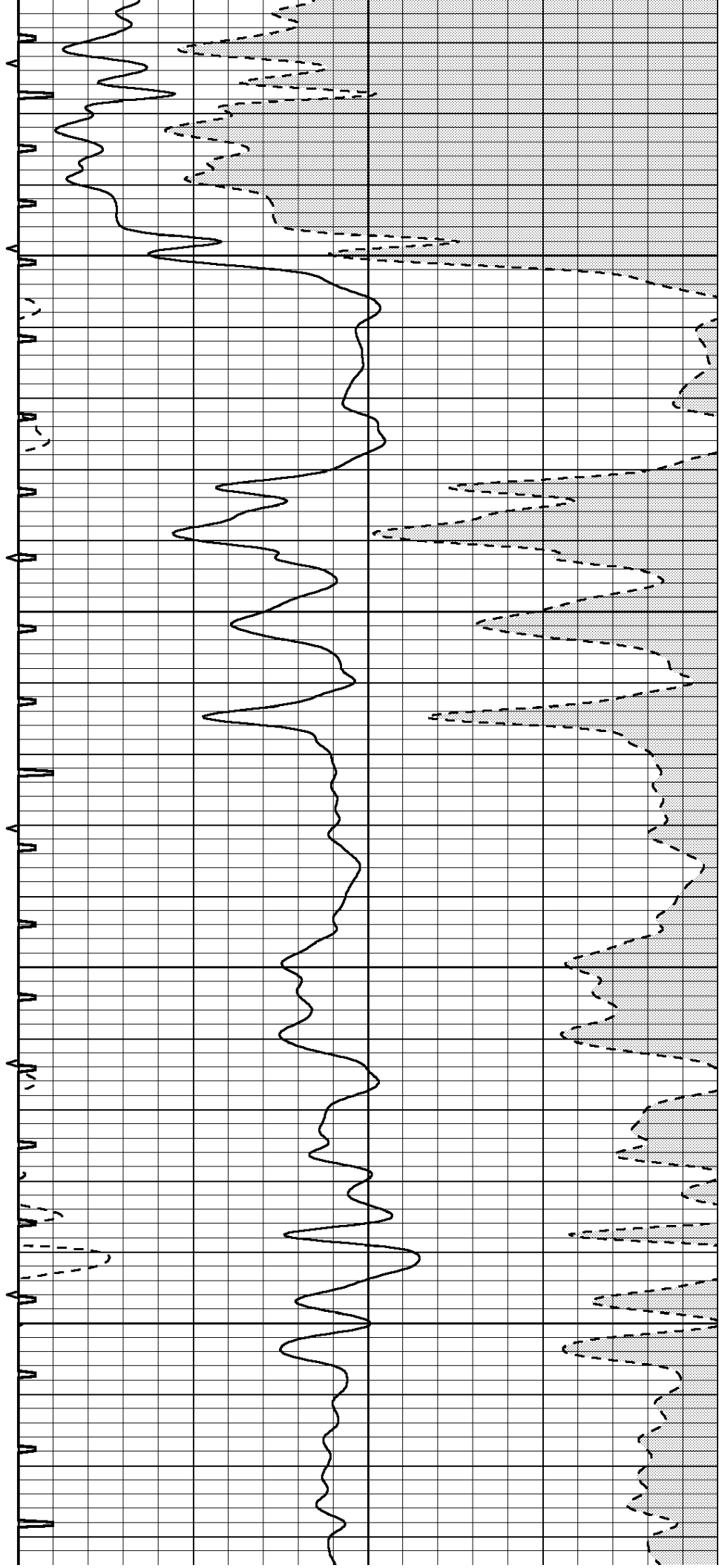


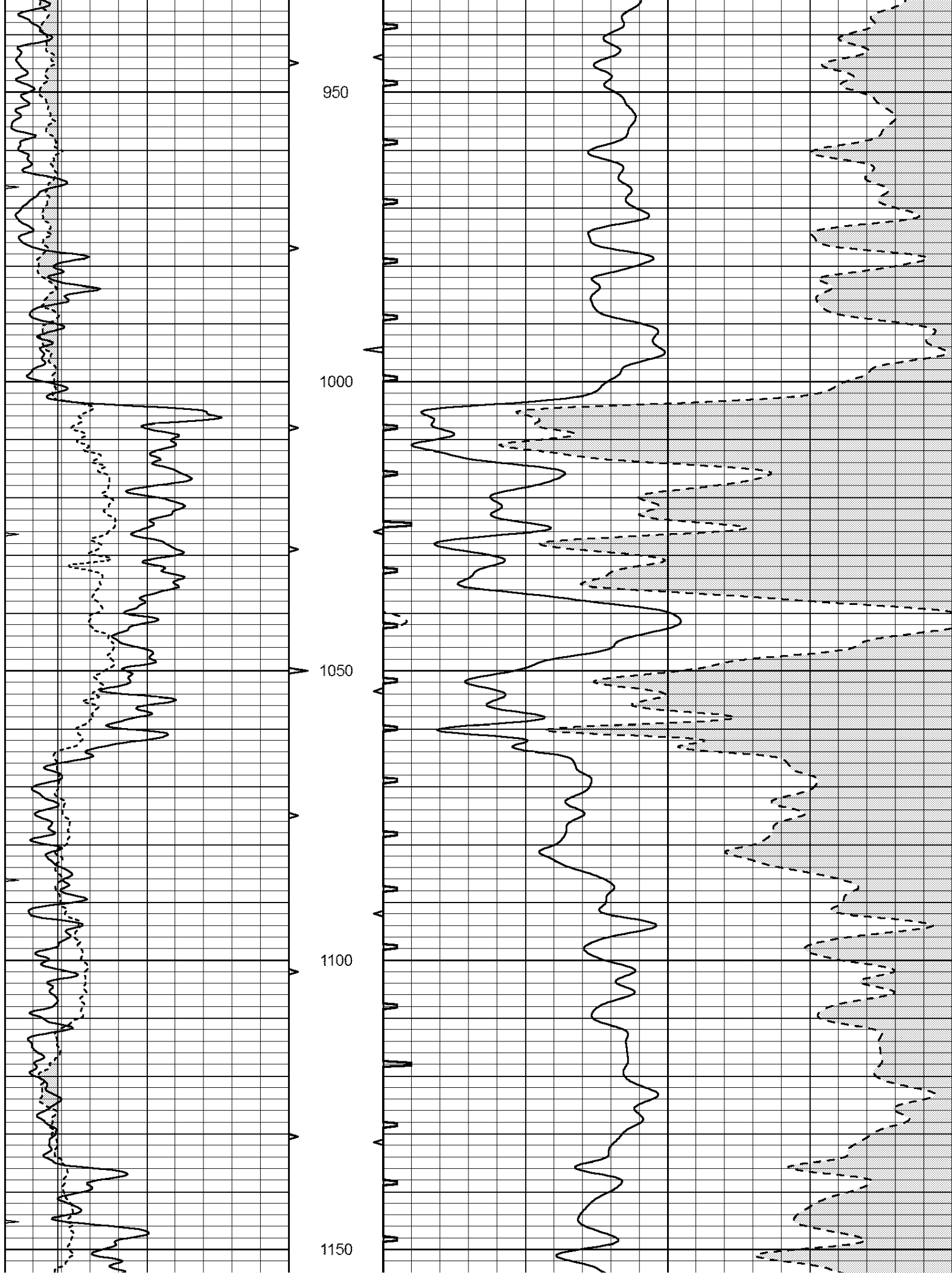
750

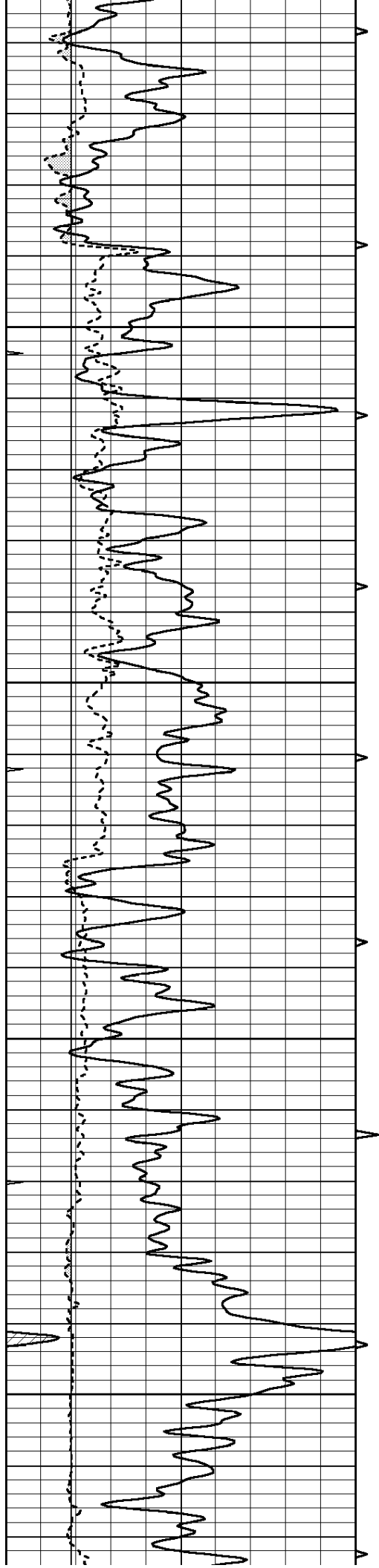
800

850

900





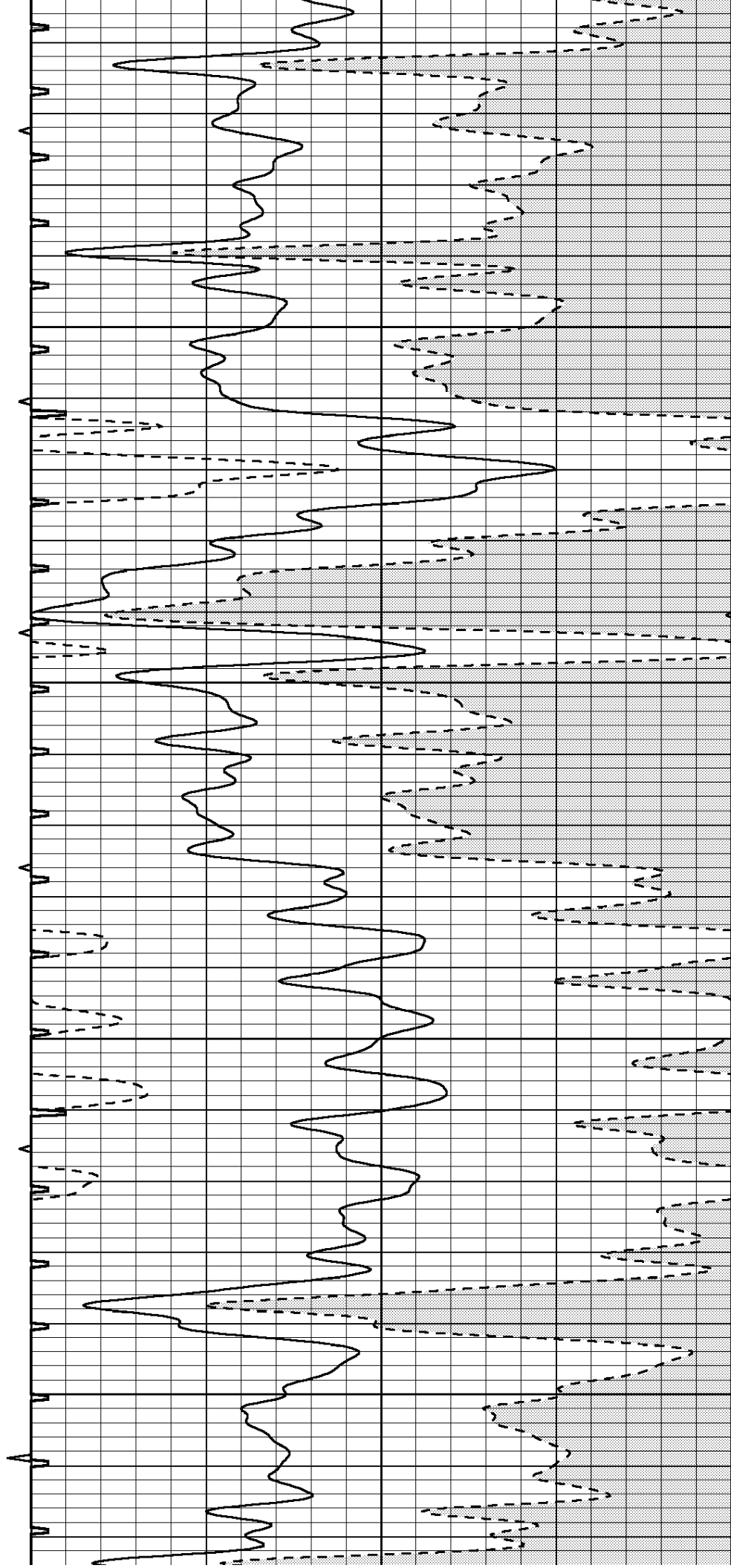


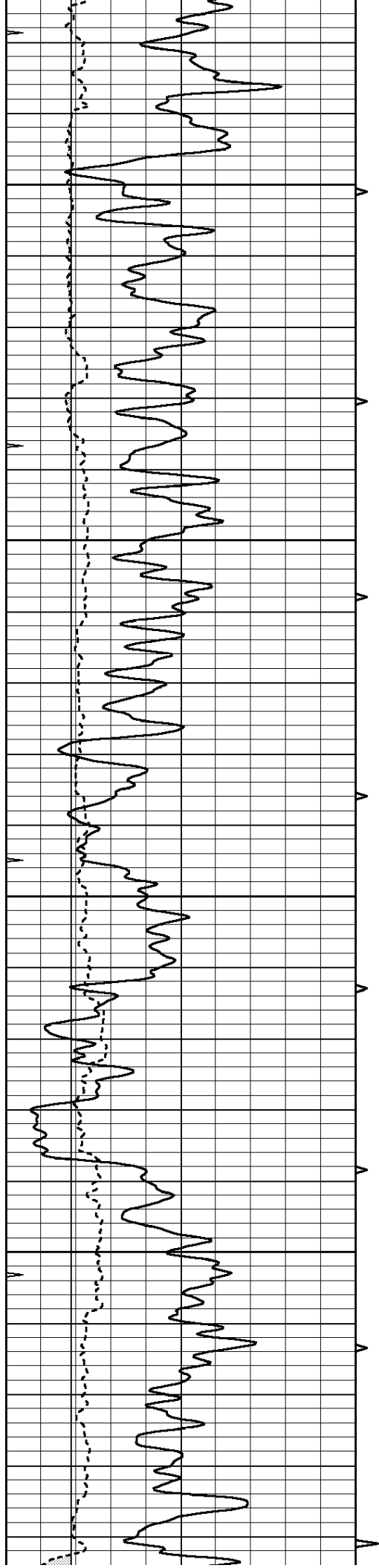
1200

1250

1300

1350



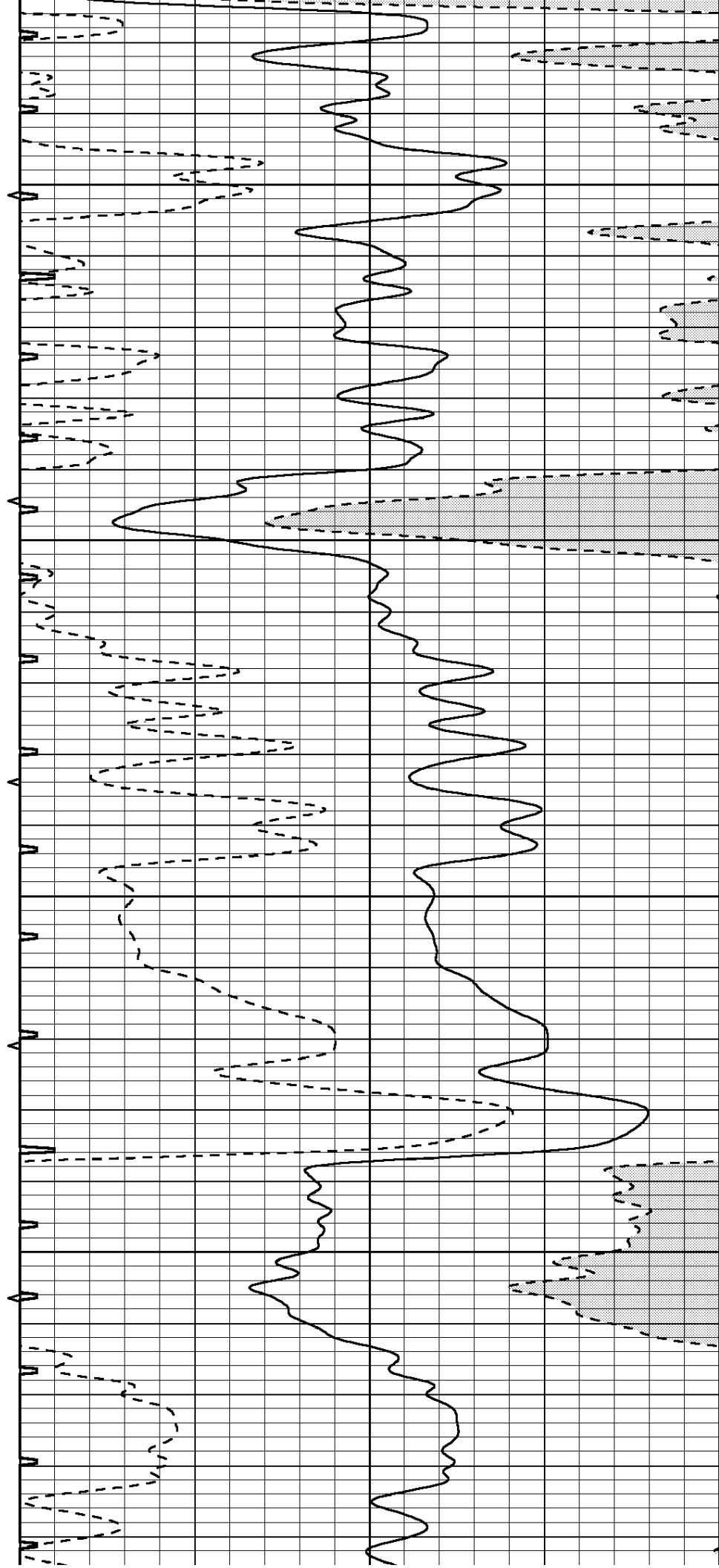


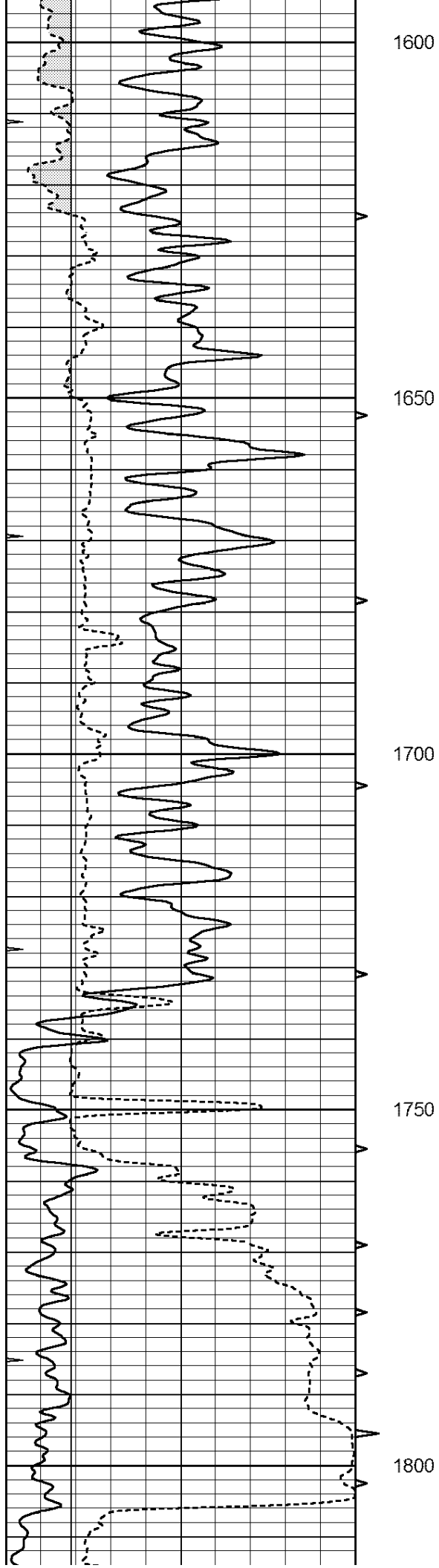
1400

1450

1500

1550





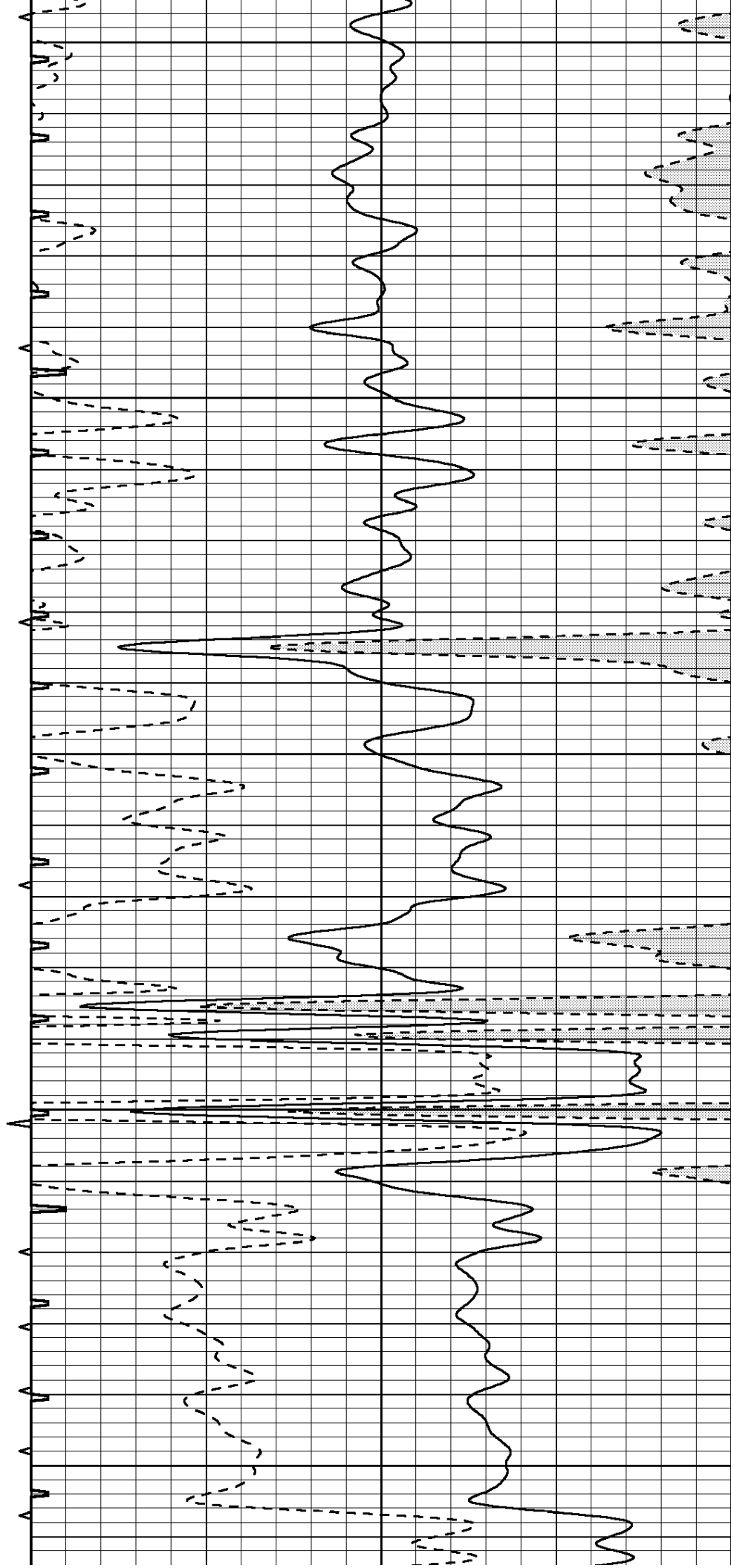
1600

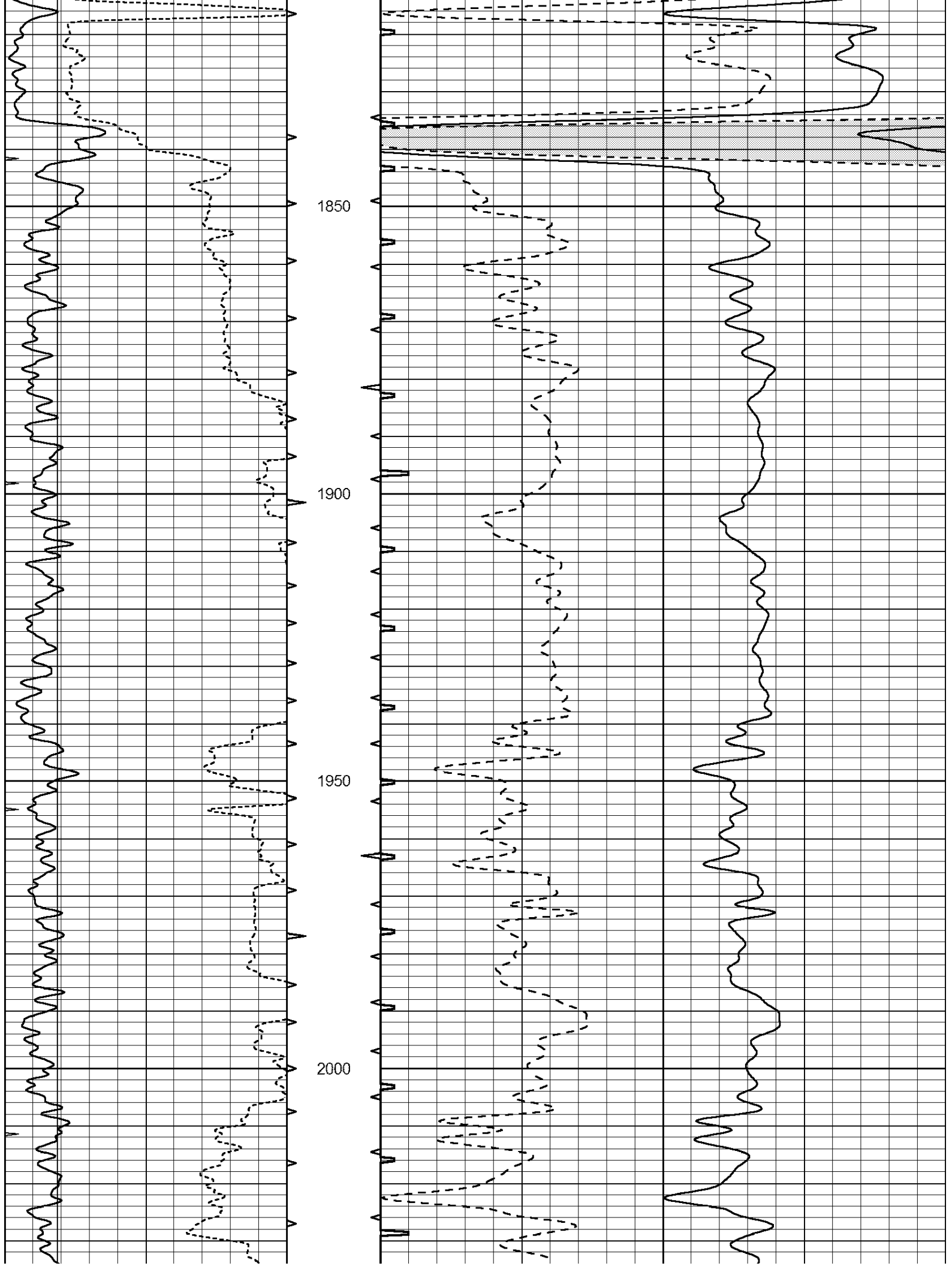
1650

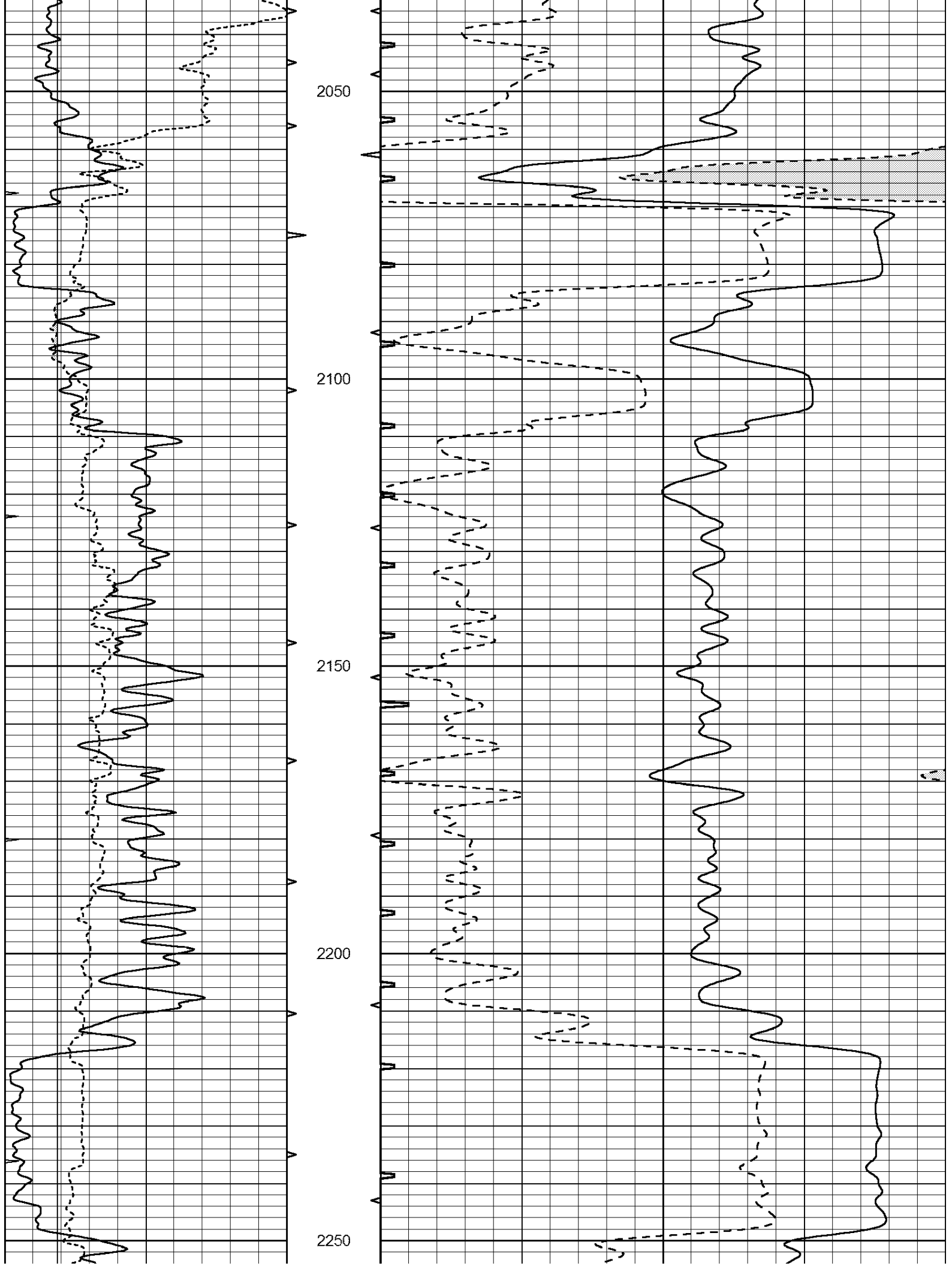
1700

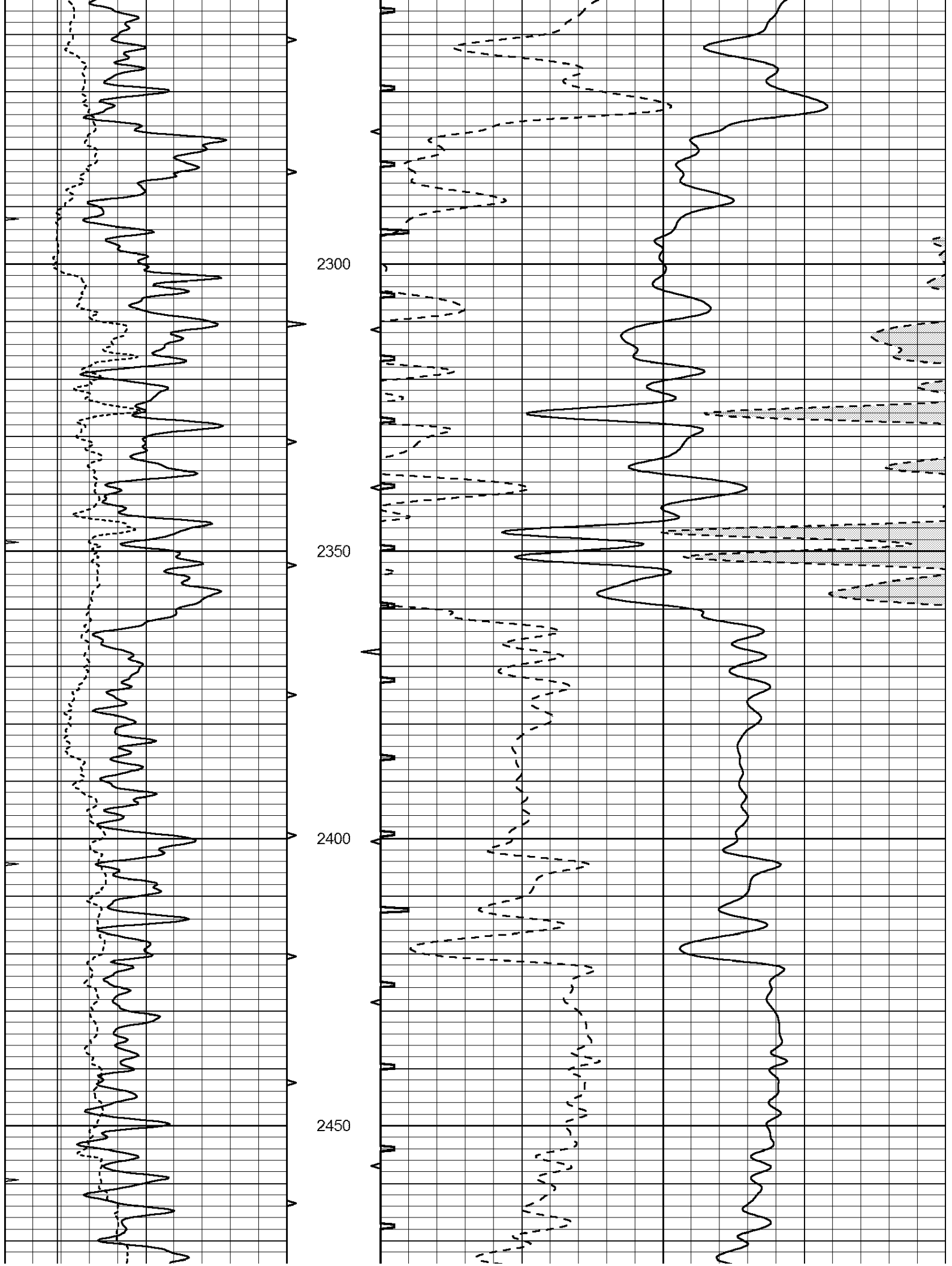
1750

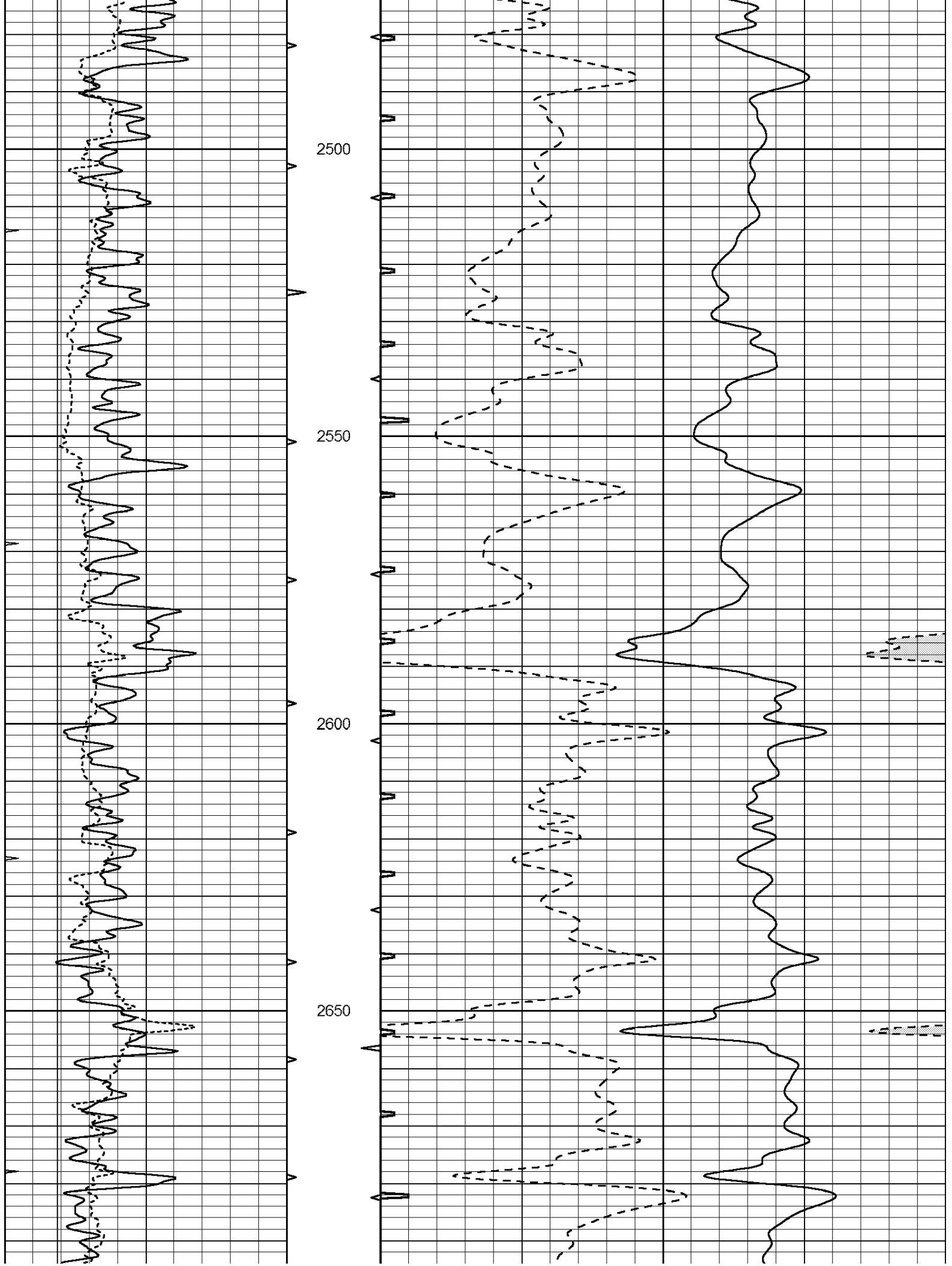
1800

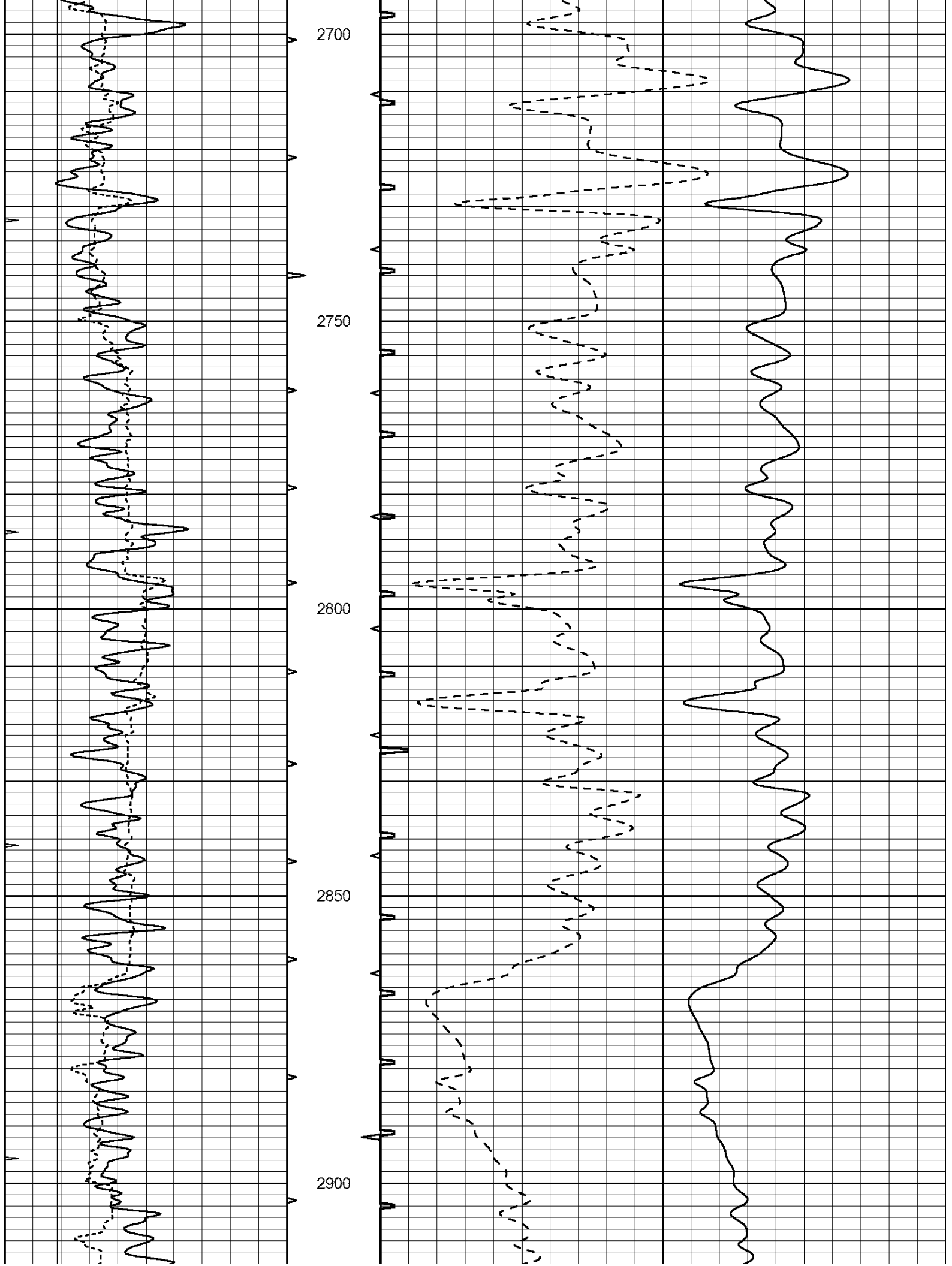


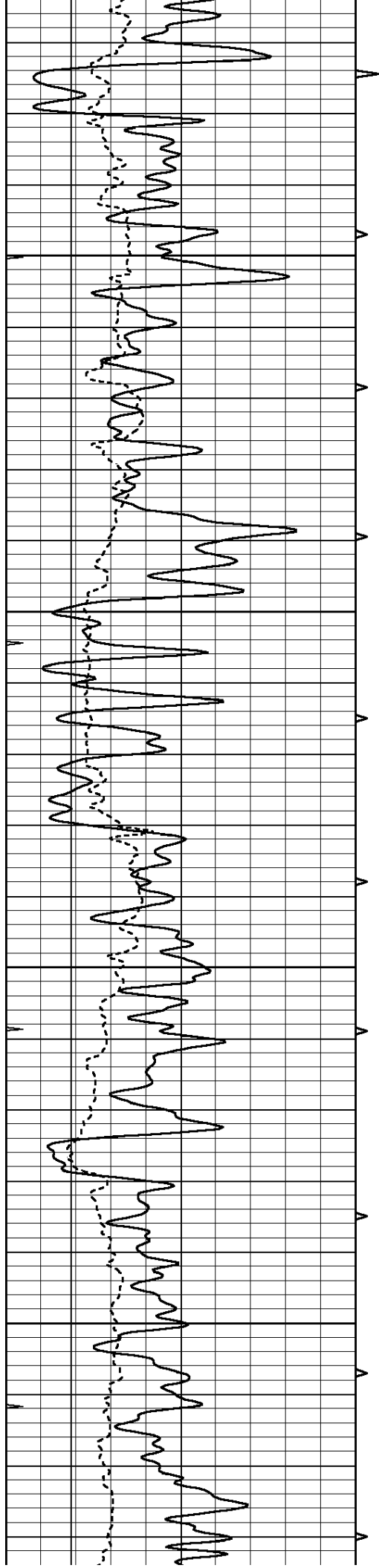










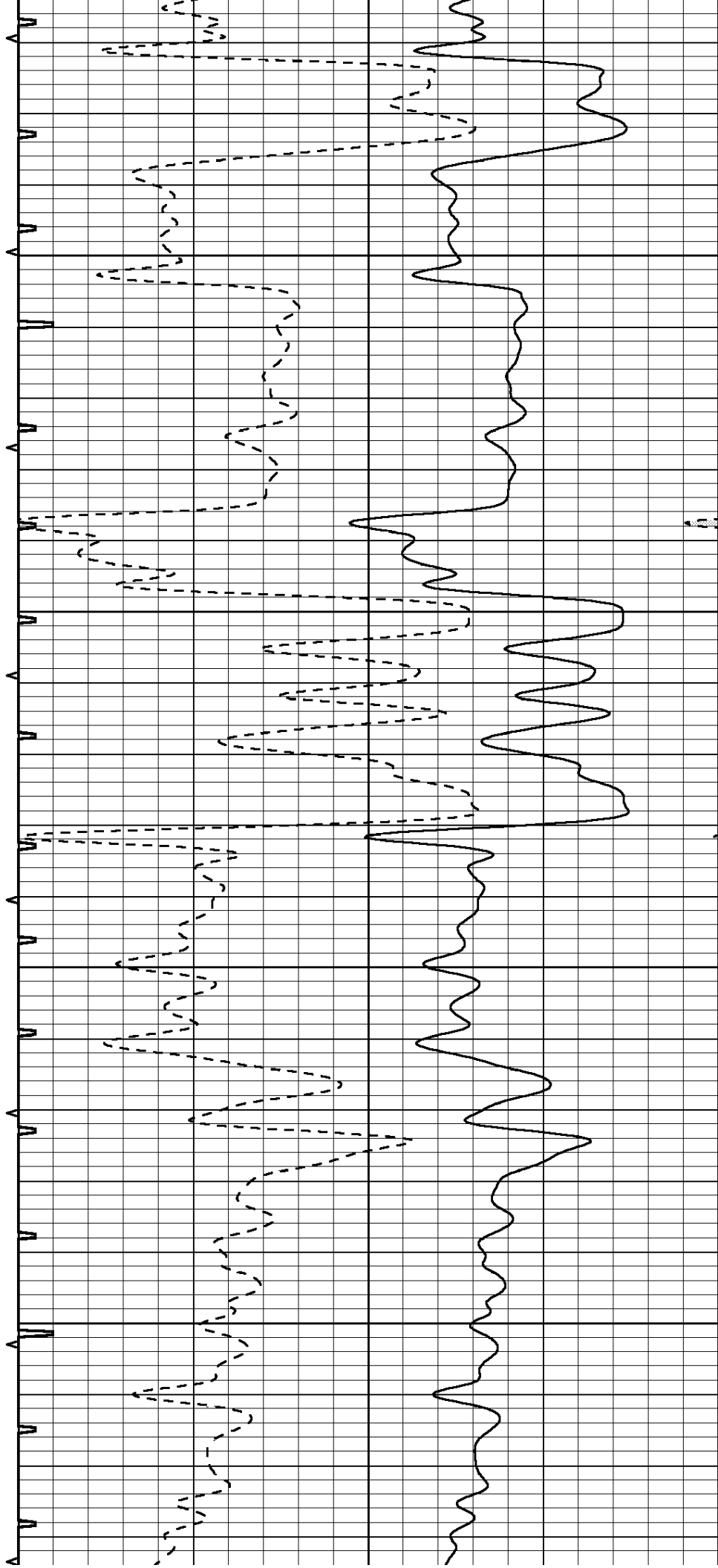


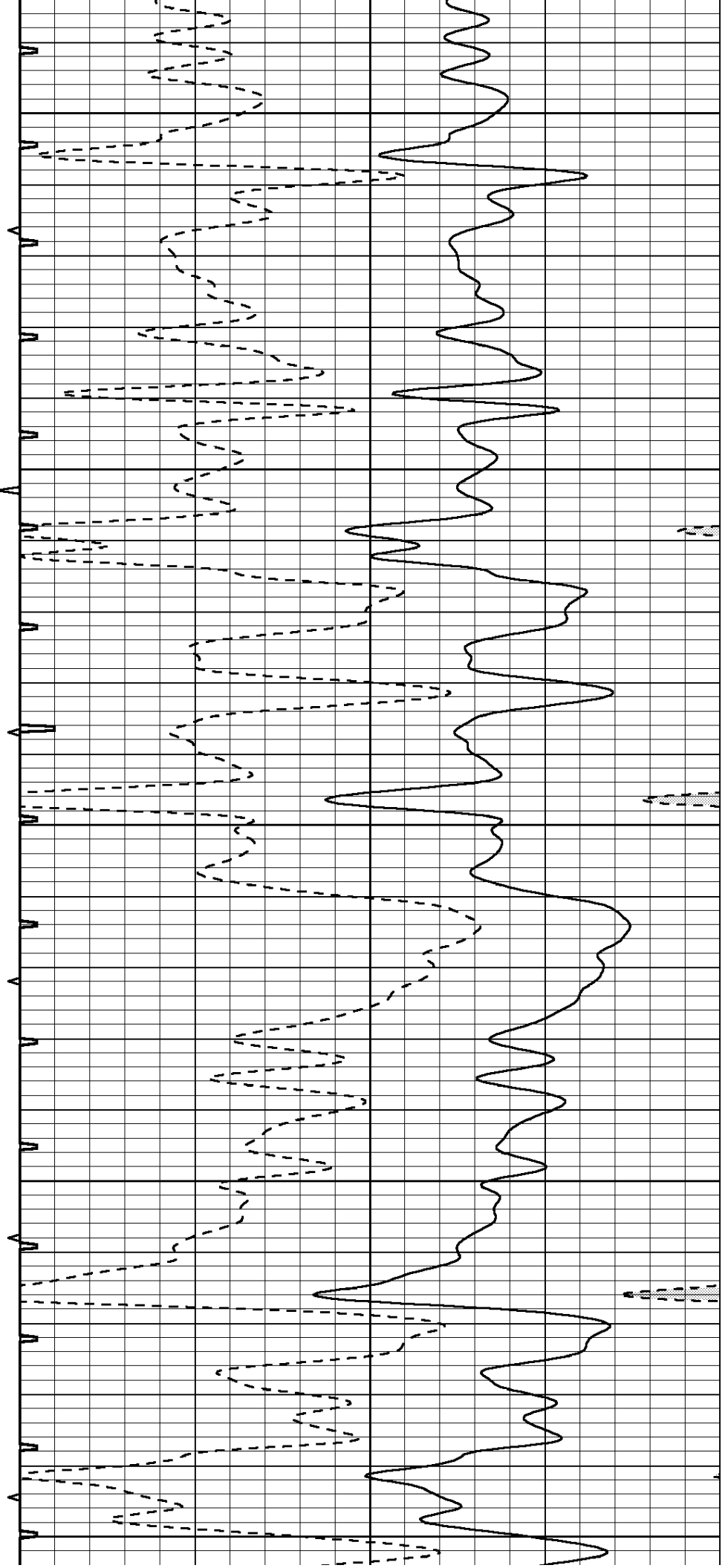
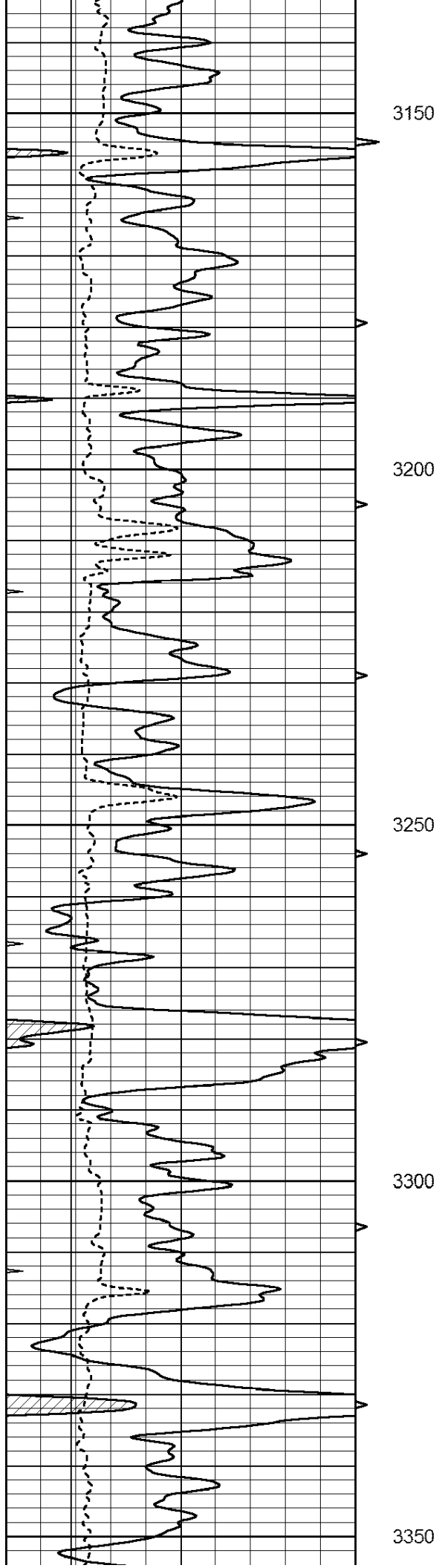
2950

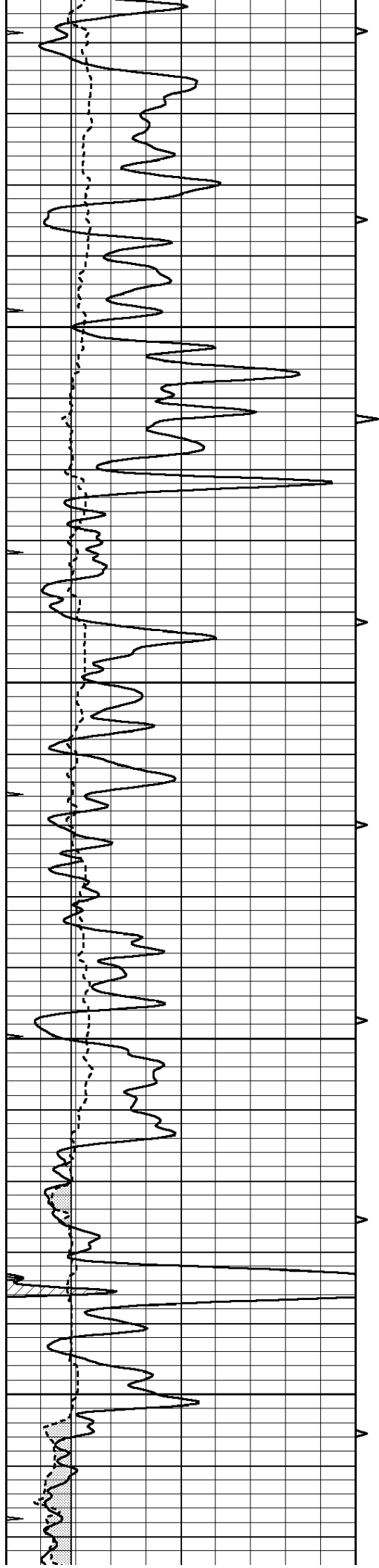
3000

3050

3100





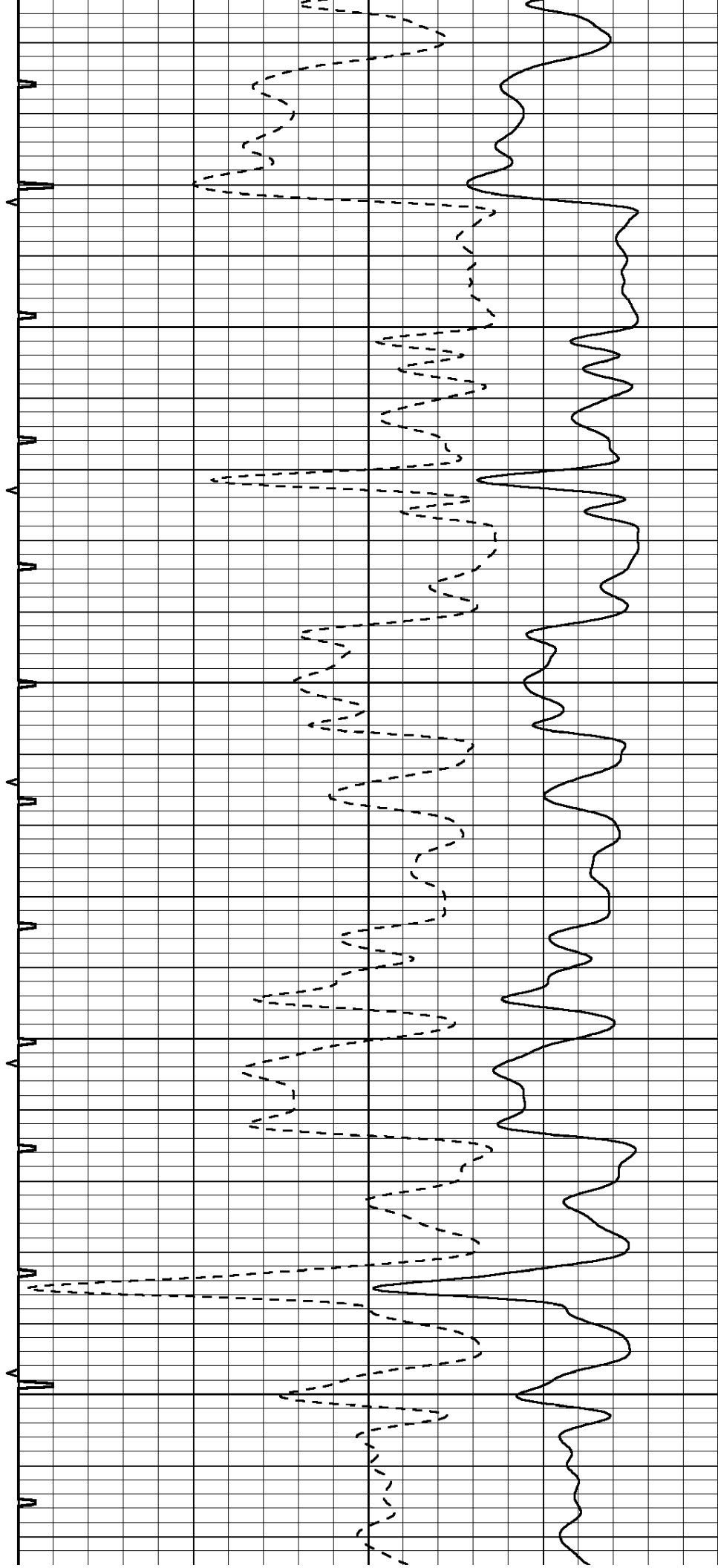


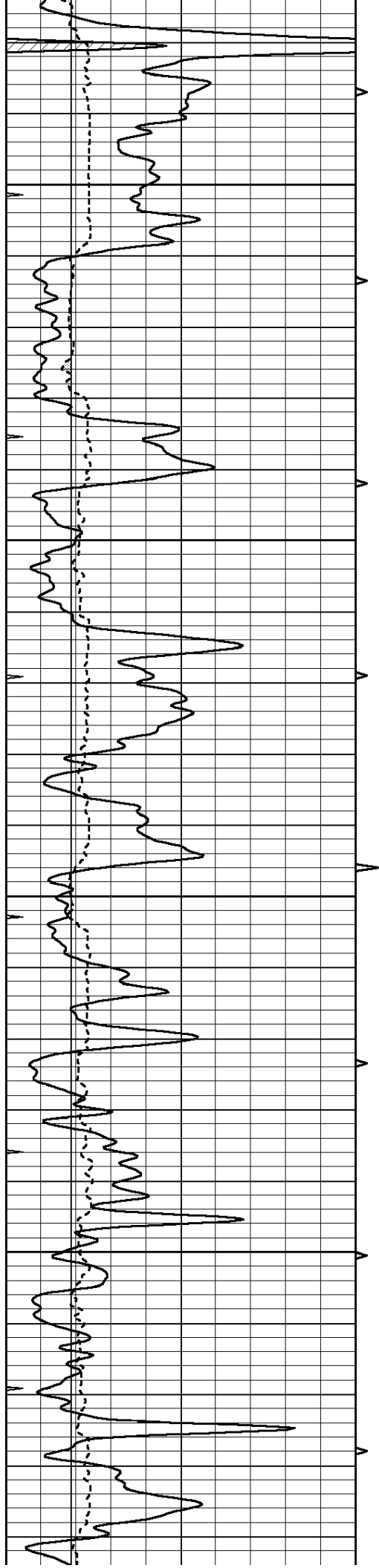
3400

3450

3500

3550



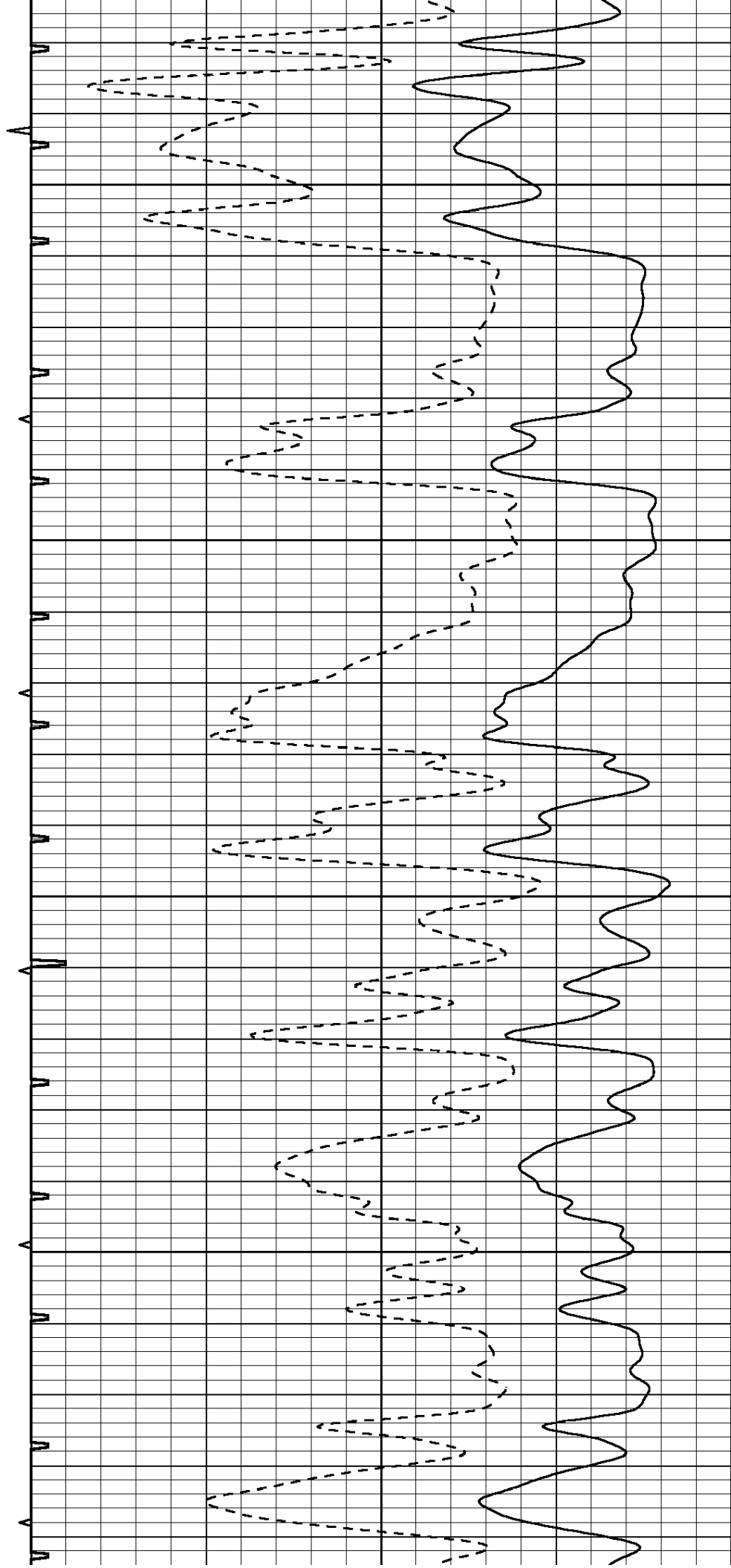


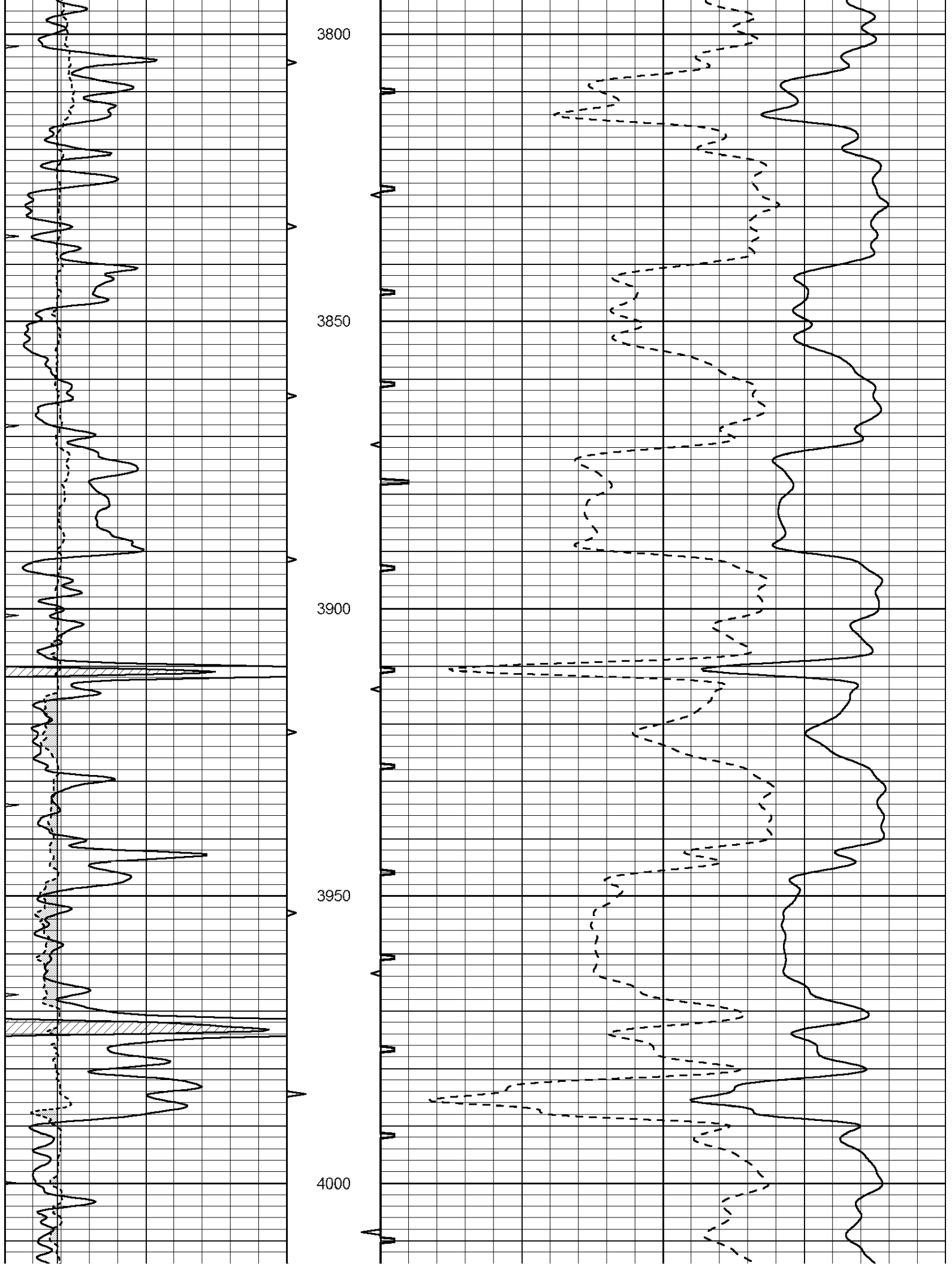
3600

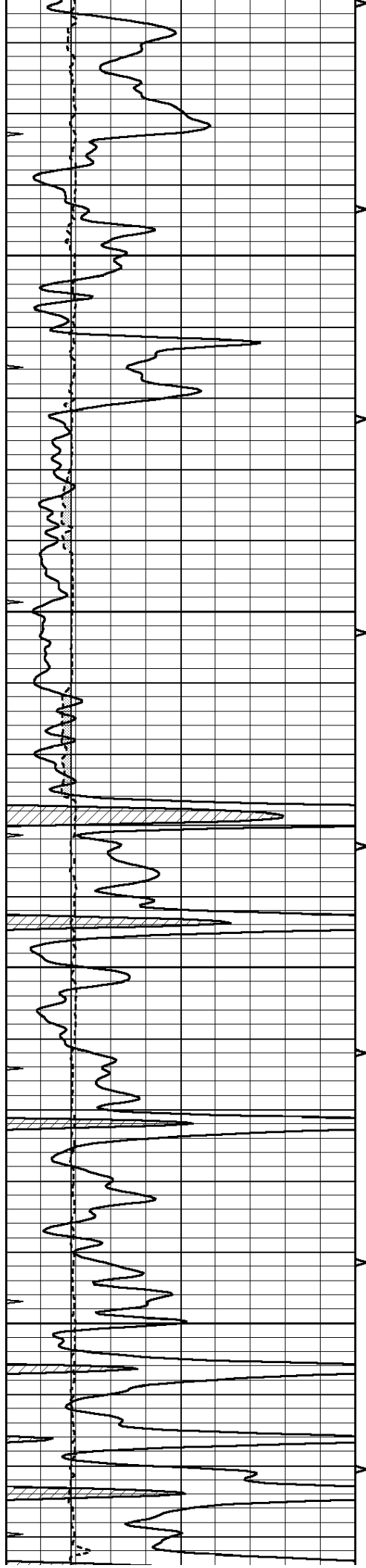
3650

3700

3750





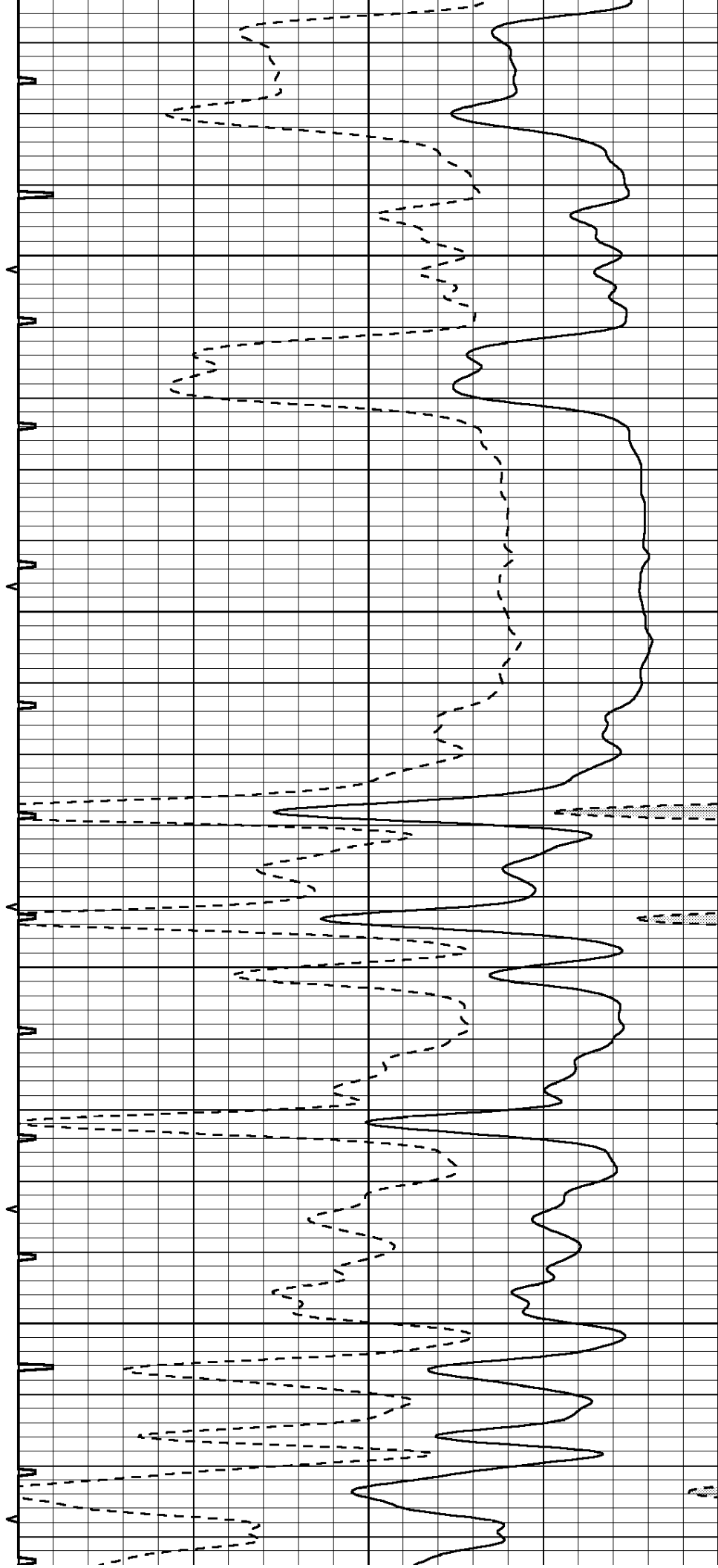


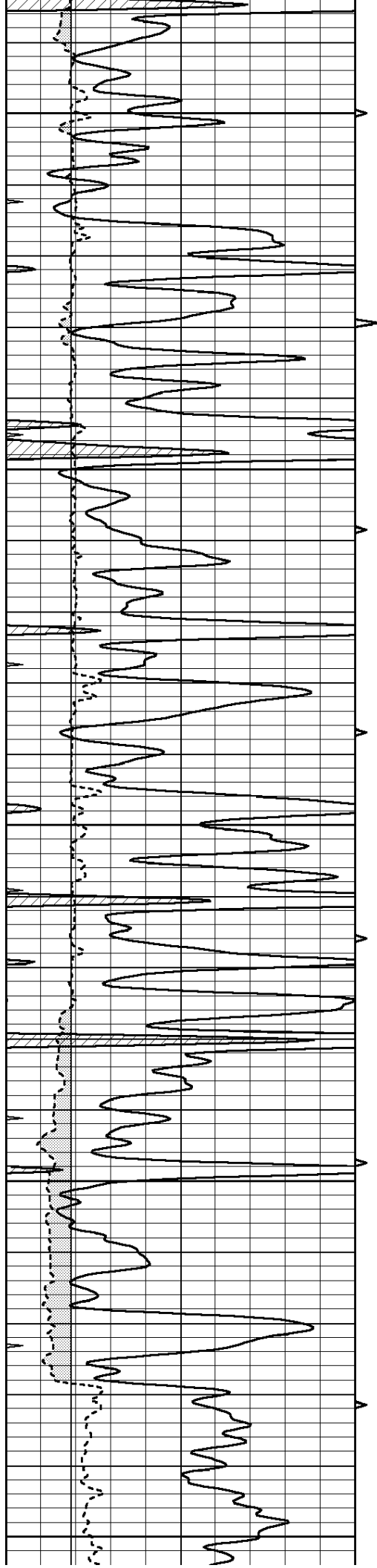
4050

4100

4150

4200





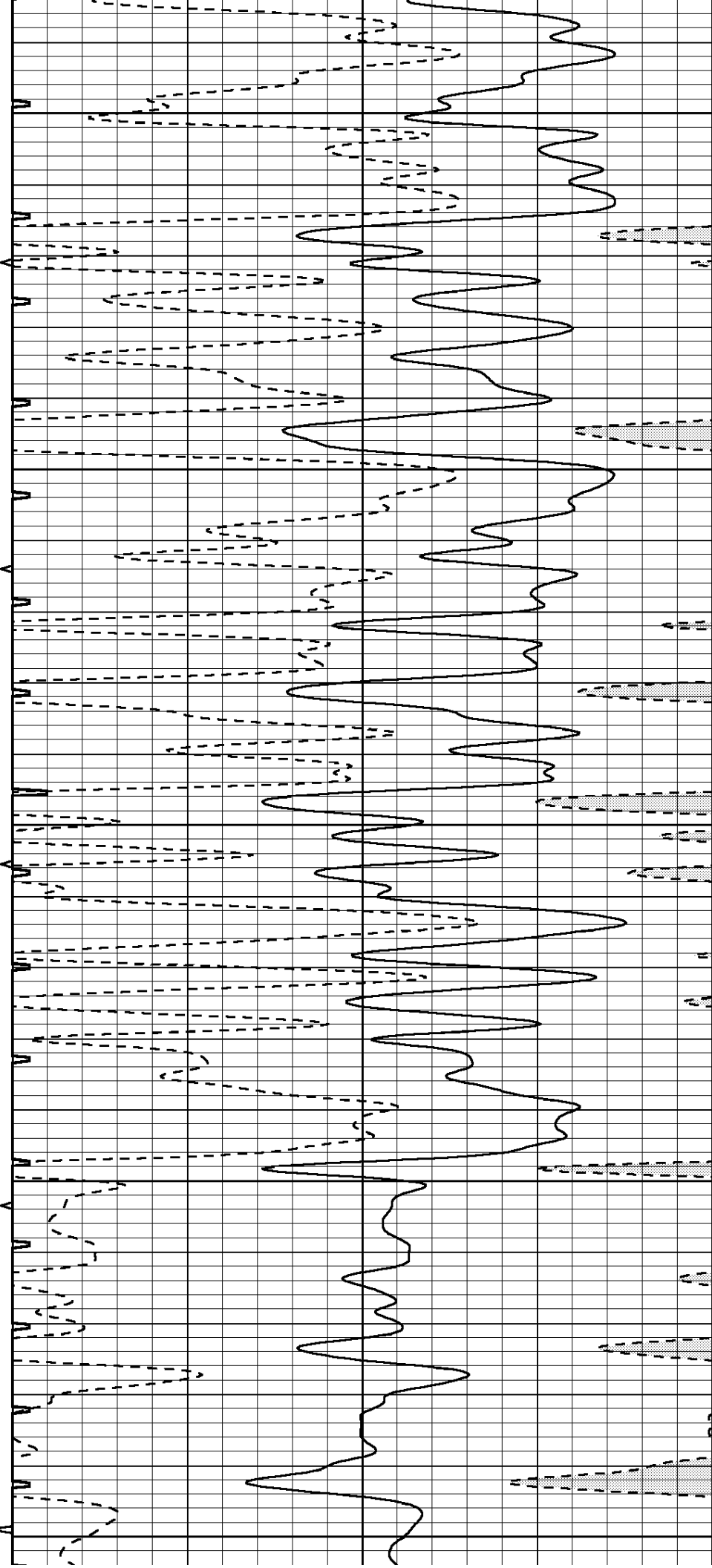
4250

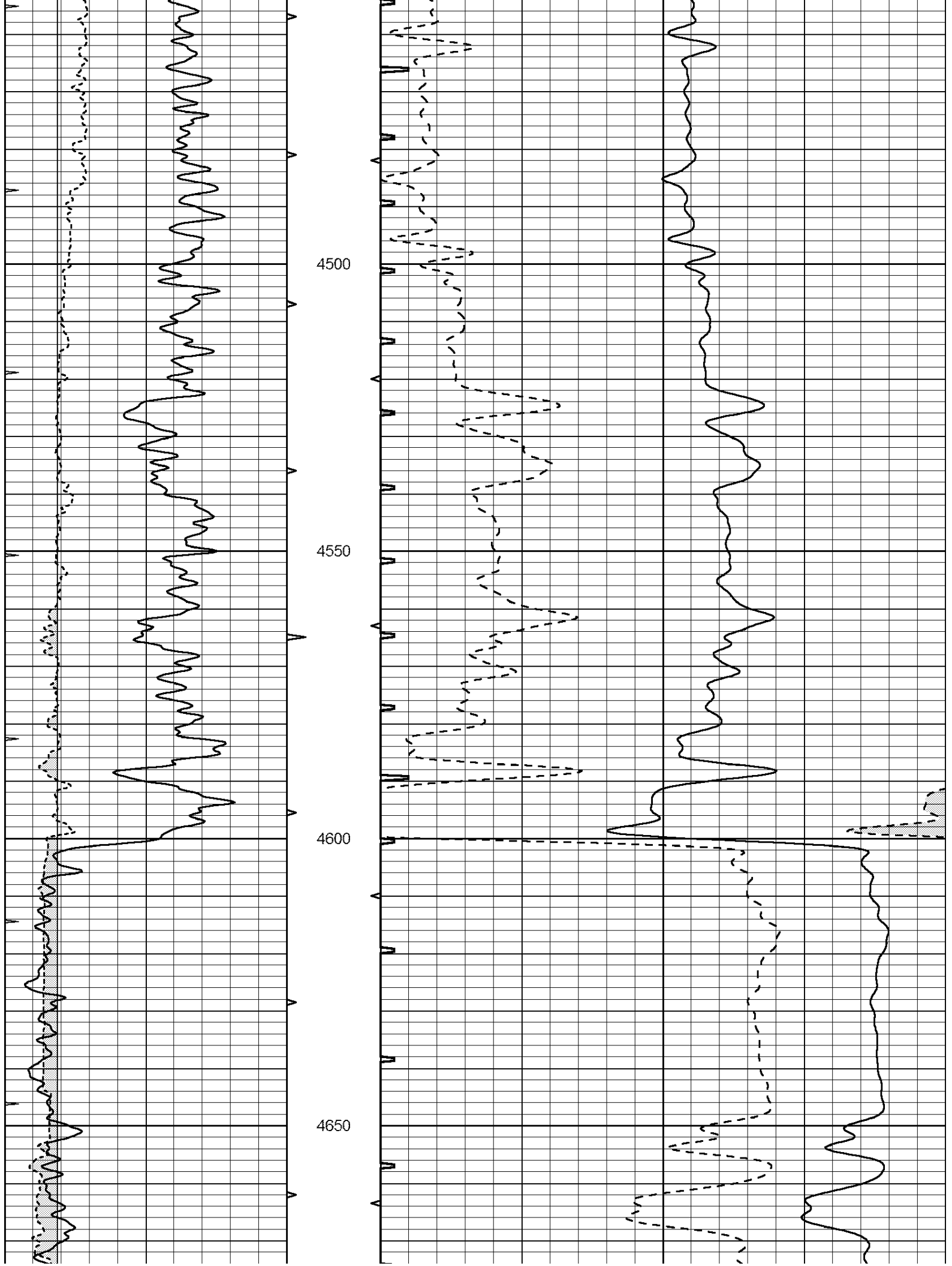
4300

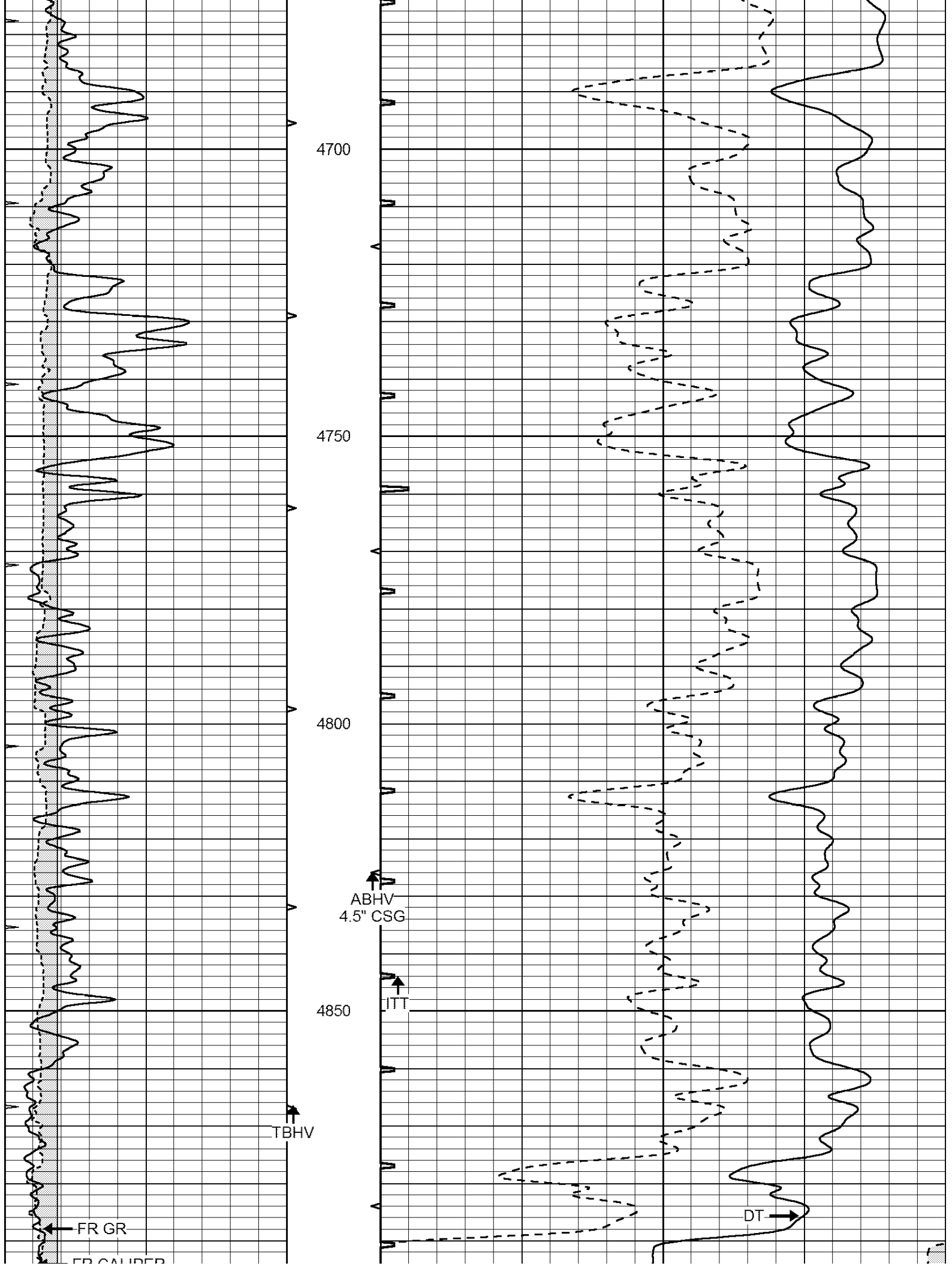
4350

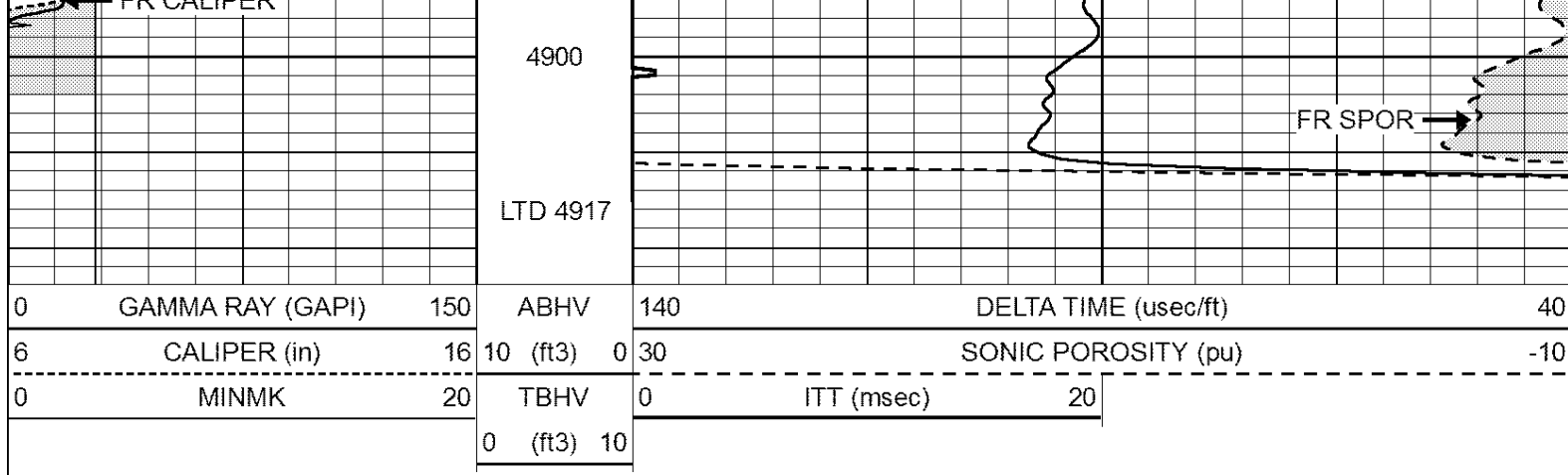
4400

4450









SUPERIOR
Hays,
Kansas

REPEAT SECTION

Database File: 008150pe.db
 Dataset Pathname: pass5
 Presentation Format: _slt
 Dataset Creation: Sat Jan 28 08:53:48 2012 by Log Open-Cased 110302
 Charted by: Depth in Feet scaled 1:240

