



SUPERIOR
Hays,
Kansas

MICRO
LOG

Company	MULL DRILLING COMPANY, INC.		
Well	MCBRIDE-MICHEL "A" #1-31		
Field			
County	KIOWA	State	COLORADO
Location:	AP1 # : 05-061-06867-0000		Other Services CDL/CNL/PE DIL/SON
Permanent Datum	GROUND LEVEL	Elevation	3904
Log Measured From	KELLY BUSHING 11' A.G.L.		
Drilling Measured From	KELLY BUSHING		
	SEC 31 TWP 18S RGE 45W		
Date	1/28/12		
Run Number	TWO		
Depth Driller	4918		
Depth Logger	4917		
Bottom Logged Interval	4899		
Top Log Interval	3500		
Casing Driller	8 5/8"@355'		
Casing Logger	353'		
Bit Size	7 7/8"		
Type Fluid in Hole	CHEMICAL MUD	CHLORIDES 6200 PPM	
Density / Viscosity	9.3/50		
pH / Fluid Loss	9.0/8.0		
Source of Sample	FLOWLINE		
Rm @ Meas. Temp	0.85@70F		
Rmt @ Meas. Temp	0.64@70F		
Rmc @ Meas. Temp	1.02@70F		
Source of Rmt / Rmc	MEASUREMENT		
Rm @ BHT	0.48@124F		
Time Circulation Stopped	2 HOURS		
Time Logger on Bottom			
Maximum Recorded Temperature	124F		
Equipment Number	4010		
Location	HAYS, KANSAS		
Recorded By	JEFF GRONEWEG		
Witnessed By	PHIL ASKEY		

<<< Fold Here >>>

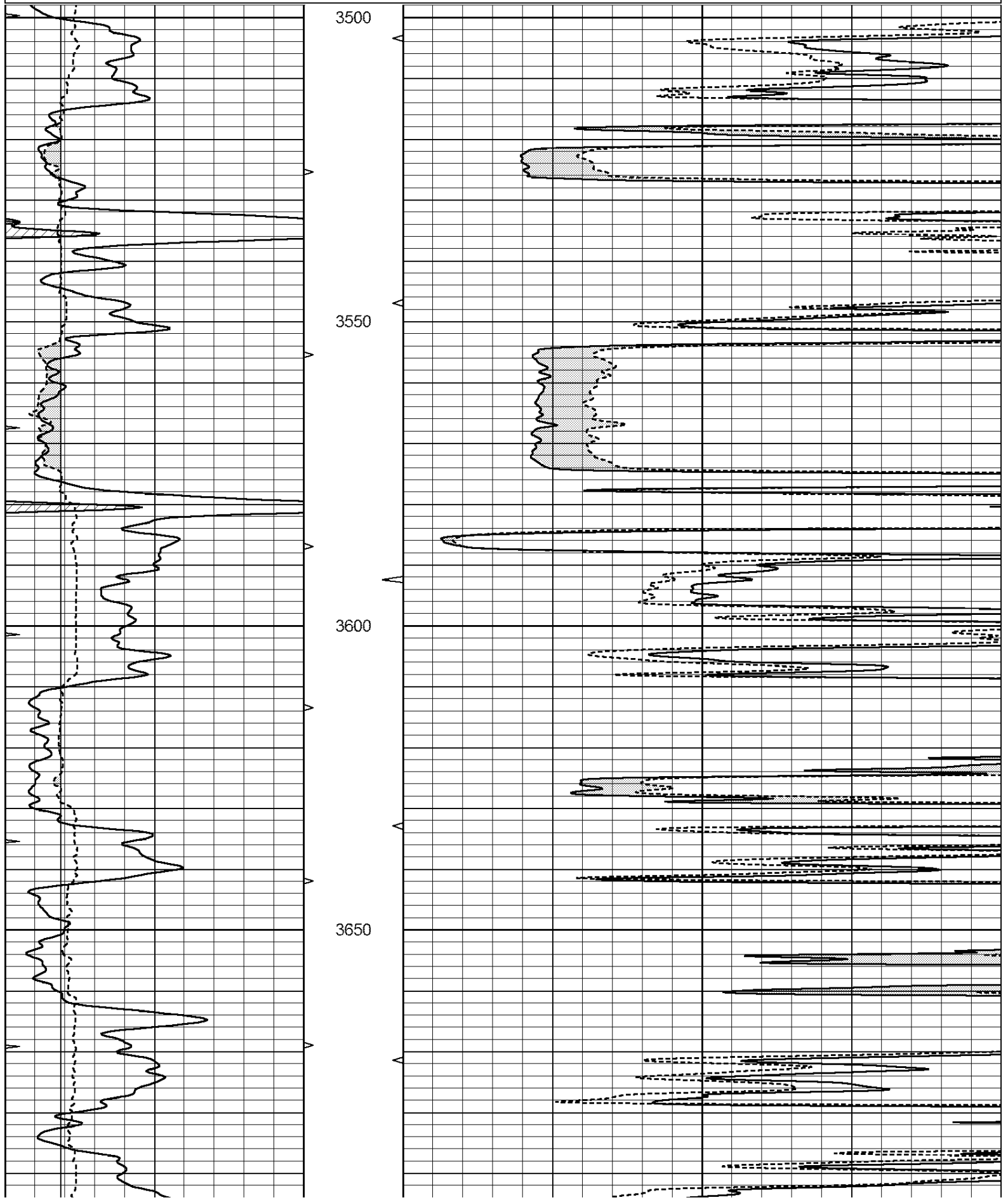
All interpretations are opinions based on inferences from electrical or other measurements and we cannot and do not guarantee the accuracy or correctness of any interpretation, and we shall not, except in the case of gross or willful negligence on our part, be liable or responsible for any loss, costs, damages, or expenses incurred or sustained by anyone resulting from any interpretation made by any of our officers, agents or employees. These interpretations are also subject to our general terms and conditions set out in our current Price Schedule.

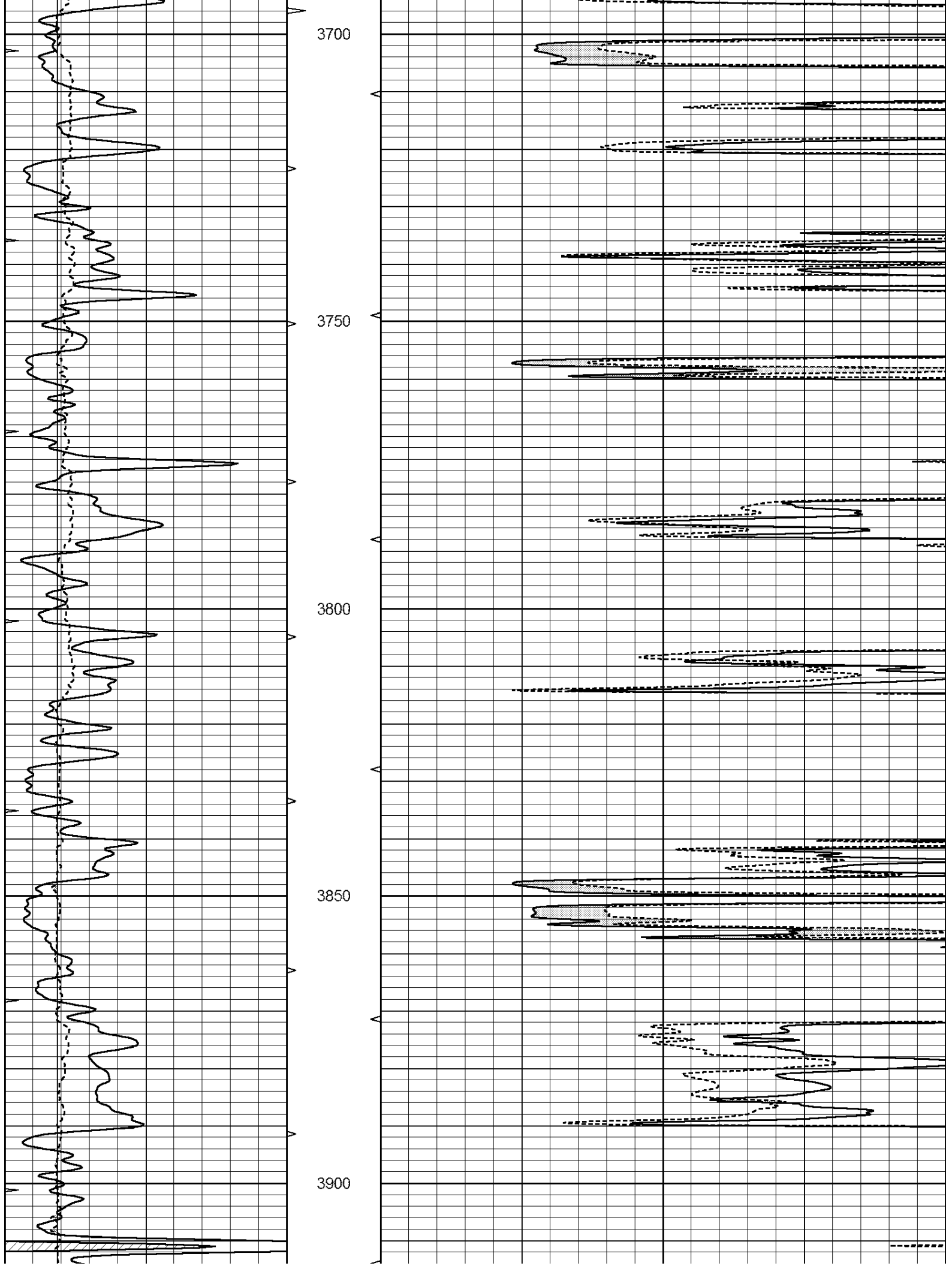
Comments

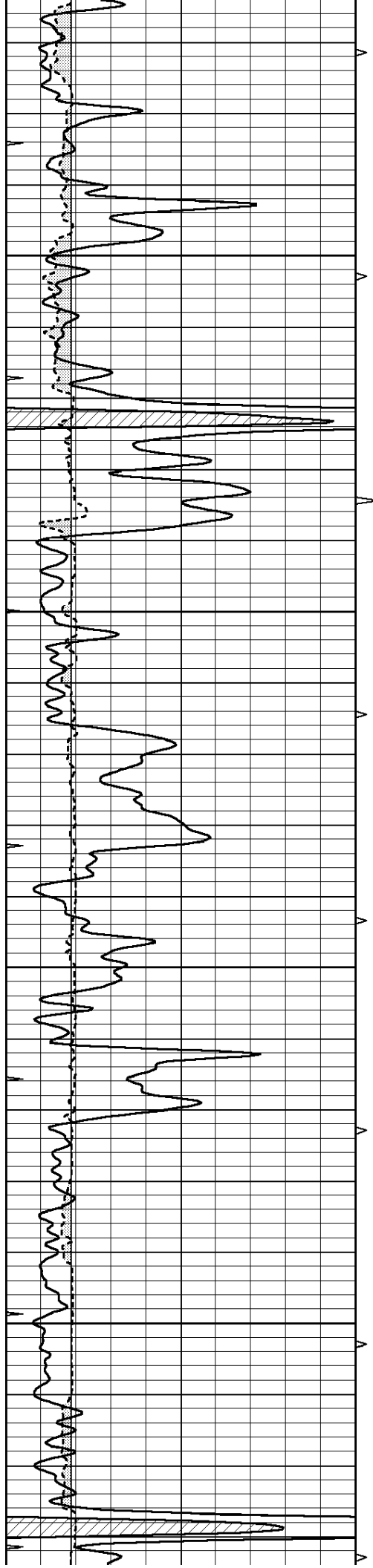
THANK YOU FOR USING SUPERIOR WELL SERVICE HAYS, KANSAS (785) 628-6395
DIRECTIONS
BRANDON, CO - 5 MILES WEST TO RD 54 - 1/8 MILE NORTH
EAST INTO 2 1/2 MILES

Database File: 008150pe.db
Dataset Pathname: pass6
Presentation Format: _micro
Dataset Creation: Sat Jan 28 09:04:55 2012 by Log Open-Cased 110302
Charted by: Depth in Feet scaled 1:240

Charted by: _____			Depth in Feet scaled 1:2.10			
0	GAMMA RAY (GAPI)	150	ABHV	0	MEL1.5 (Ohm-m)	40
6	CALIPER (in)	16	10 (ft3)	0 0	MEL2.0 (Ohm-m)	40
-----			-----			
0	MINMK	20	TBHV			
			0 (ft3)	10		





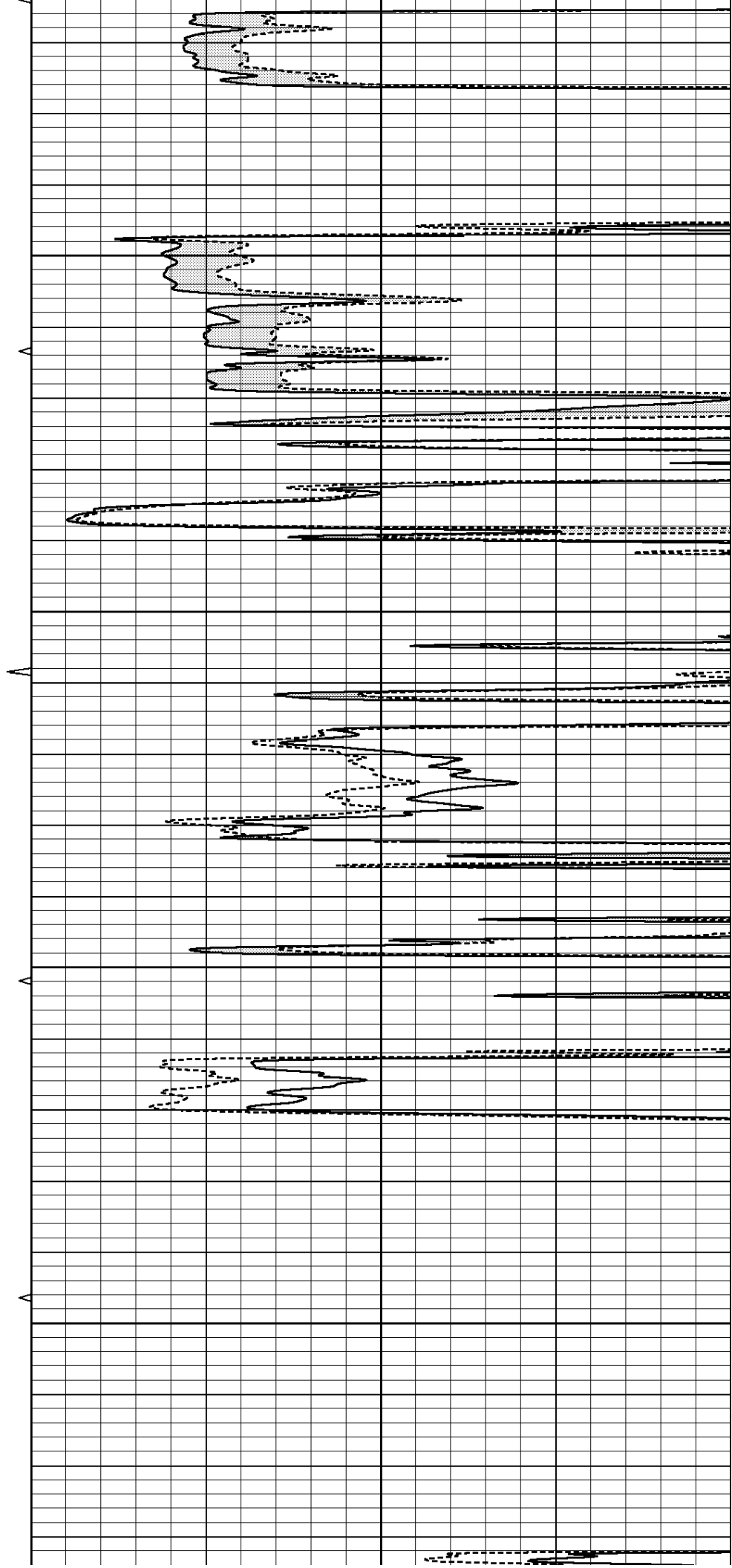


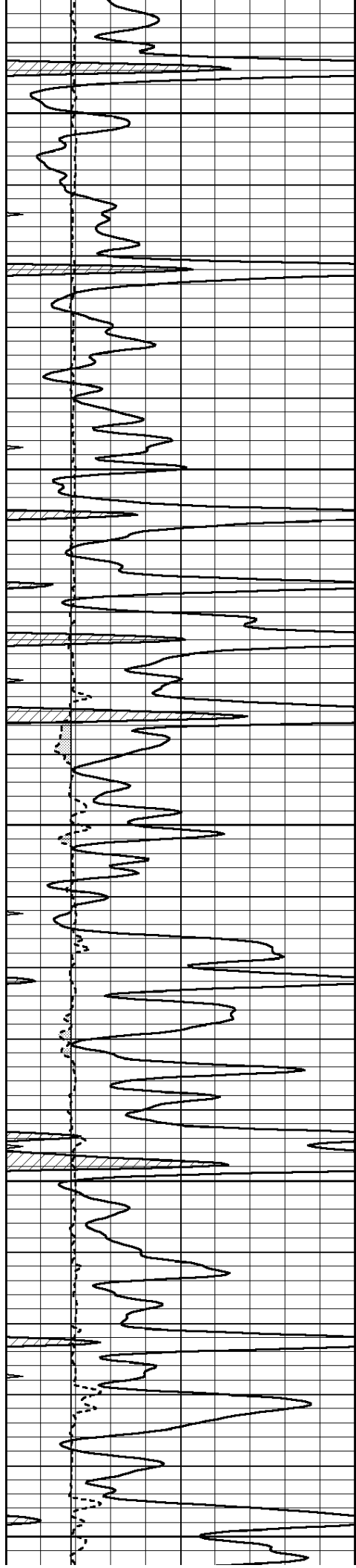
3950

4000

4050

4100





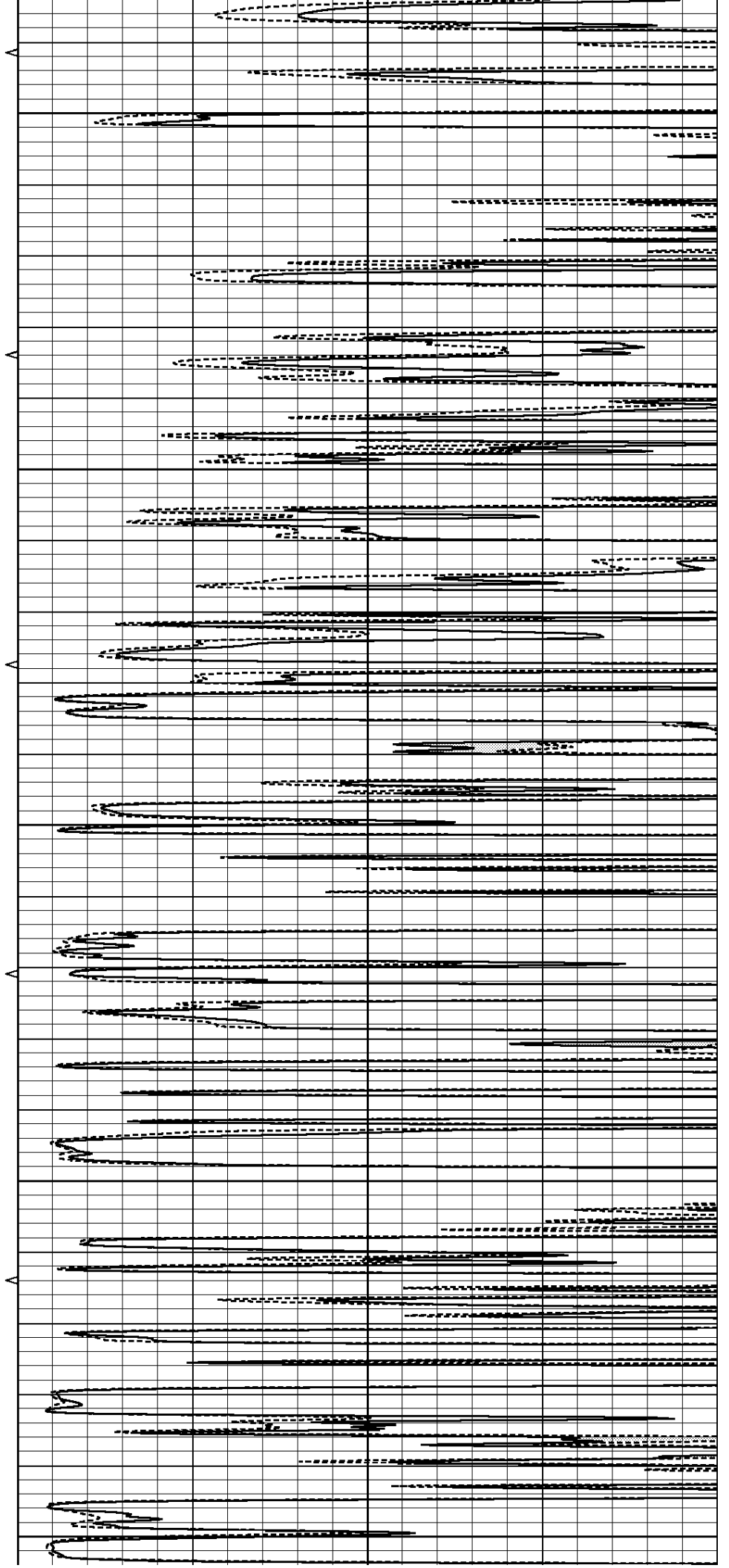
4150

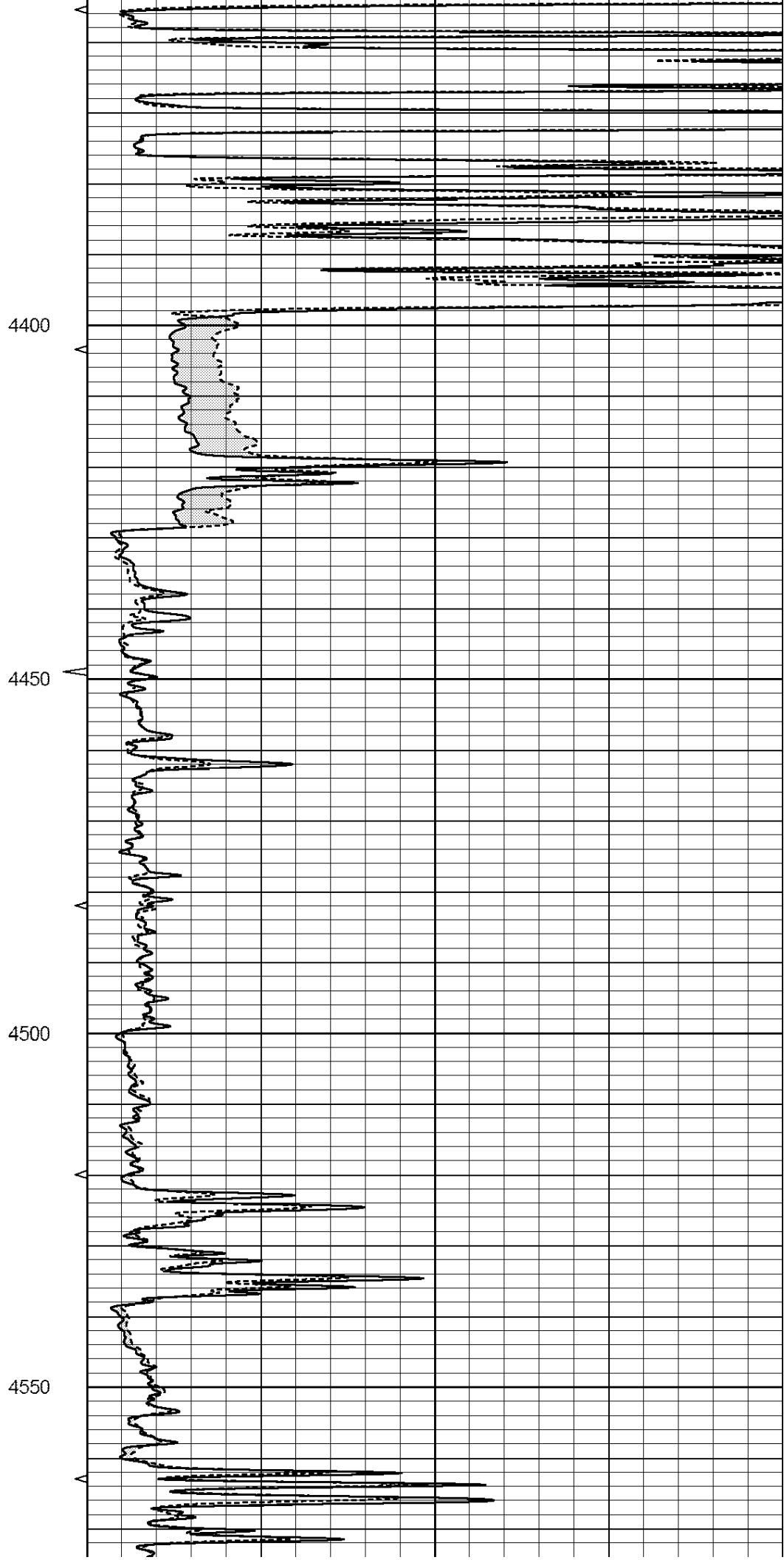
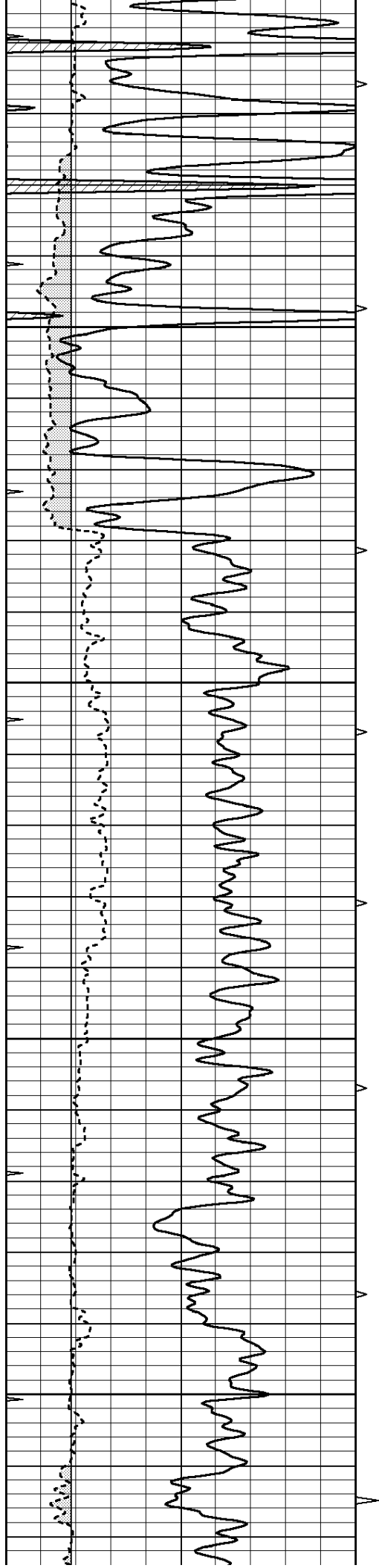
4200

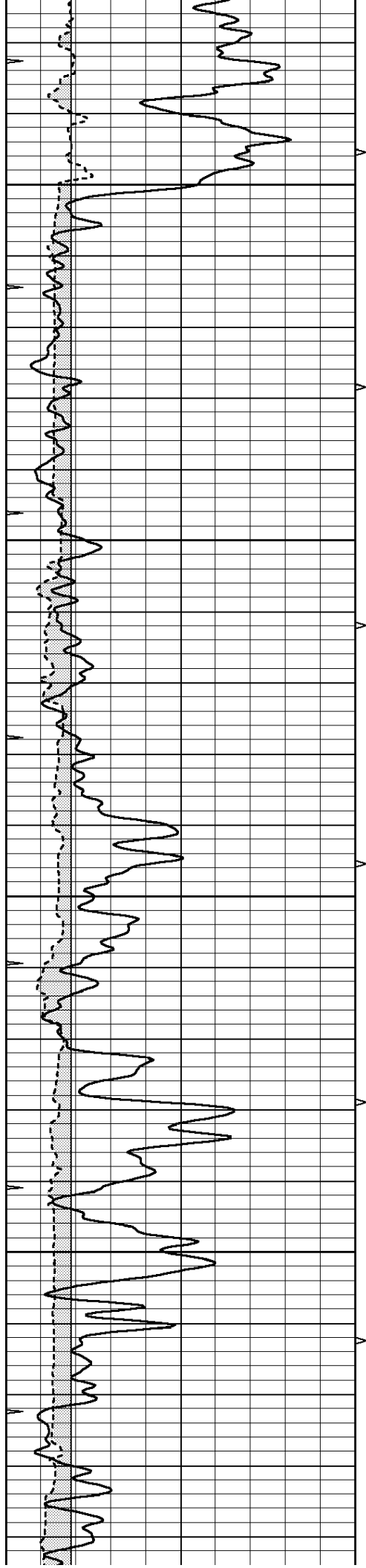
4250

4300

4350





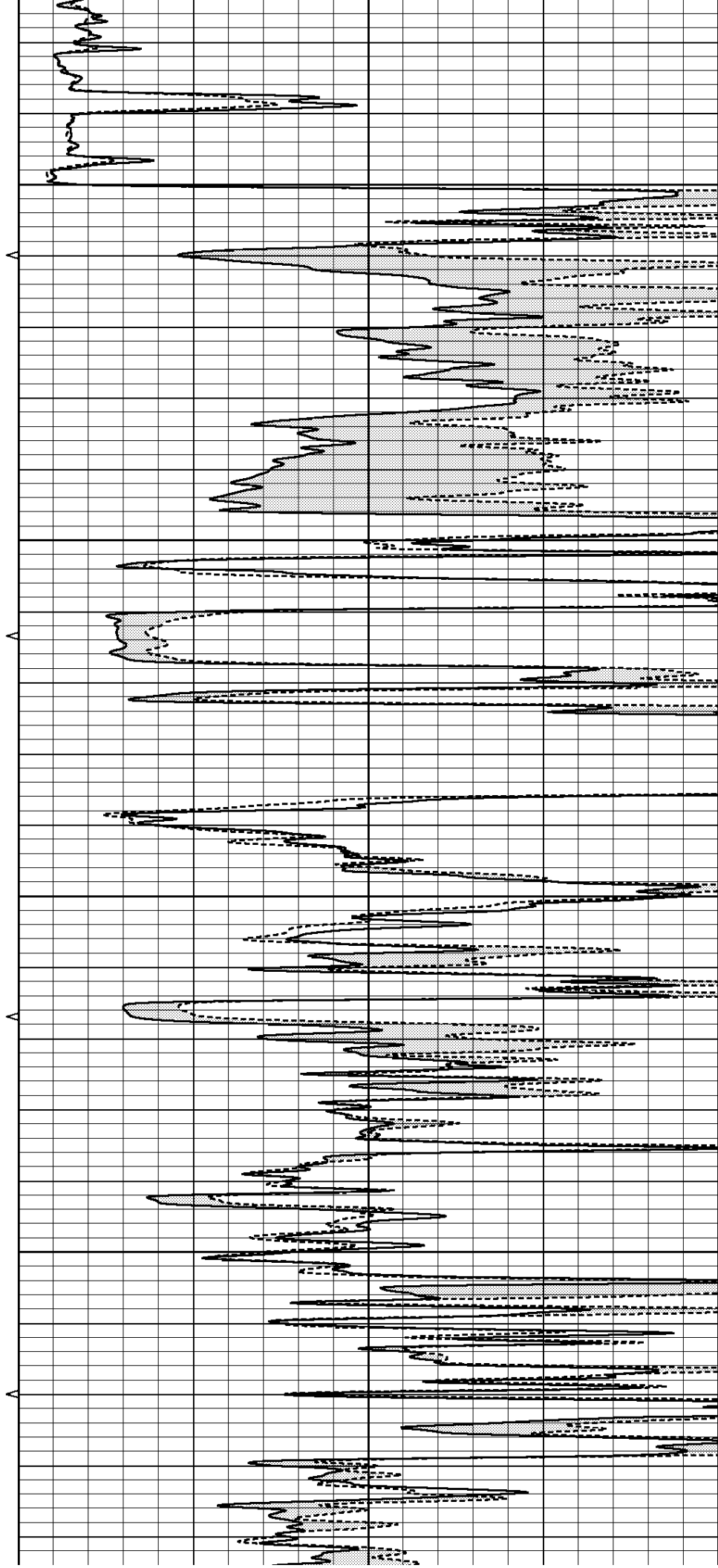


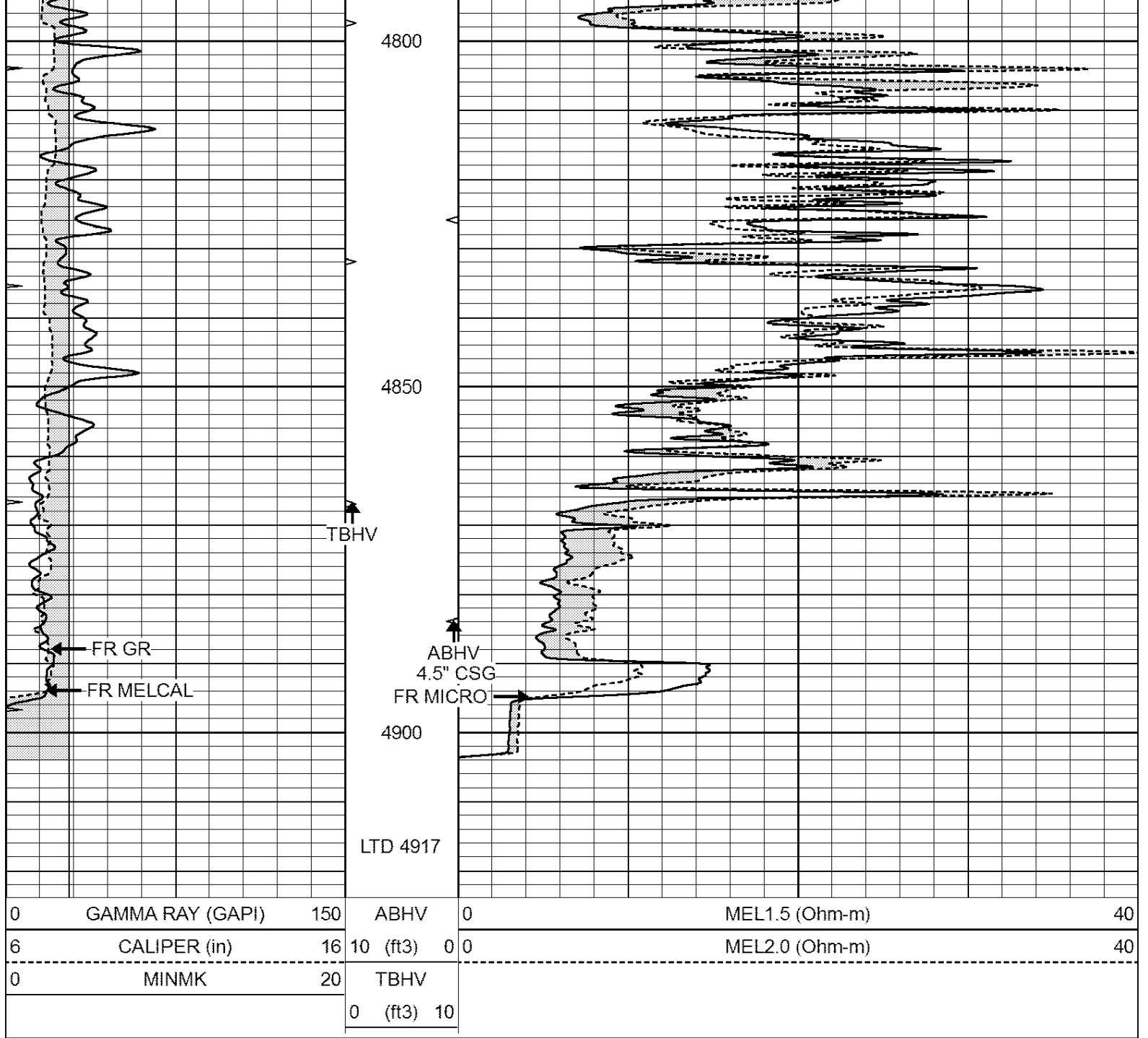
4600

4650

4700

4750

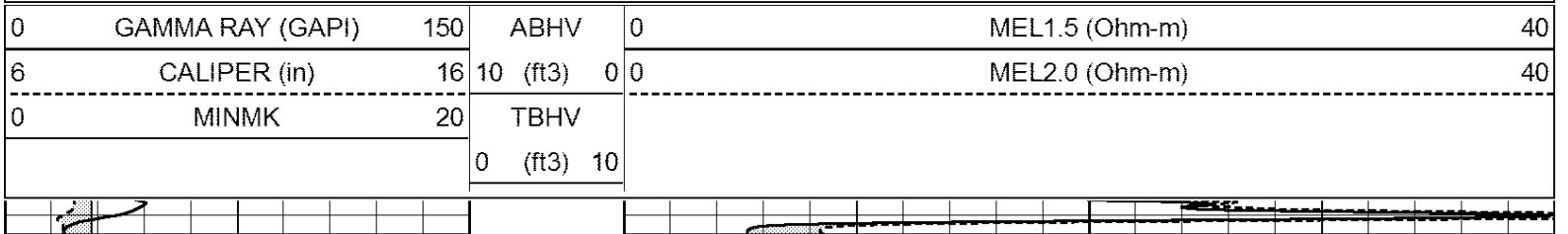


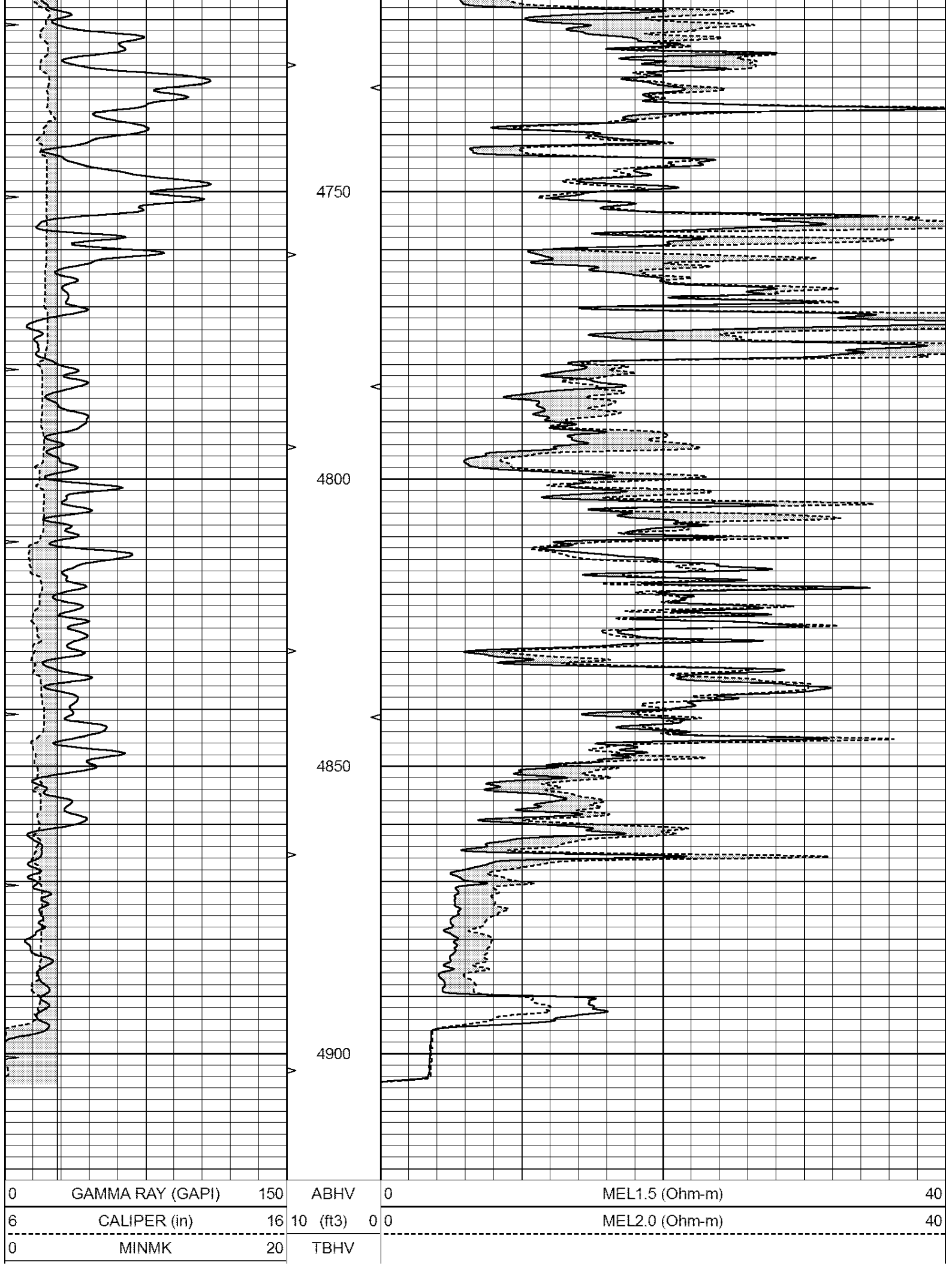


SUPERIOR
Hays,
Kansas

REPEAT SECTION

Database File: 008150pe.db
 Dataset Pathname: pass5
 Presentation Format: _micro
 Dataset Creation: Sat Jan 28 08:53:48 2012 by Log Open-Cased 110302
 Charted by: Depth in Feet scaled 1:240





Calibration Report

Database File: 008150pe.db
 Dataset Pathname: pass5
 Dataset Creation: Sat Jan 28 08:53:48 2012 by Log Open-Cased 110302

MICRO Calibration Report

Serial Number: MICRO5
 Tool Model: PROBE
 Performed: Fri Jan 27 19:34:50 2012

Caliper Calibration: Gain=3.397 Offset=-2.903
 References Low Cal High Cal
 7.600 15.000
 Readings 3.092 5.270

1.5" Calibration: Gain=40.000 Offset=-0.300
 References Low Cal High Cal
 0.000 20.000
 Readings -0.002 0.981

2" Calibration: Gain=52.000 Offset=-0.700
 References Low Cal High Cal
 0.000 20.000
 Readings 0.002 0.898

Gamma Ray Calibration Report

Serial Number: GR4
 Tool Model: OPEN
 Performed: Fri Jan 27 19:34:46 2012
 Calibrator Value: 200.0 GAPI
 Background Reading: 0.0 cps
 Calibrator Reading: 189.0 cps
 Sensitivity: 1.9000 GAPI/cps