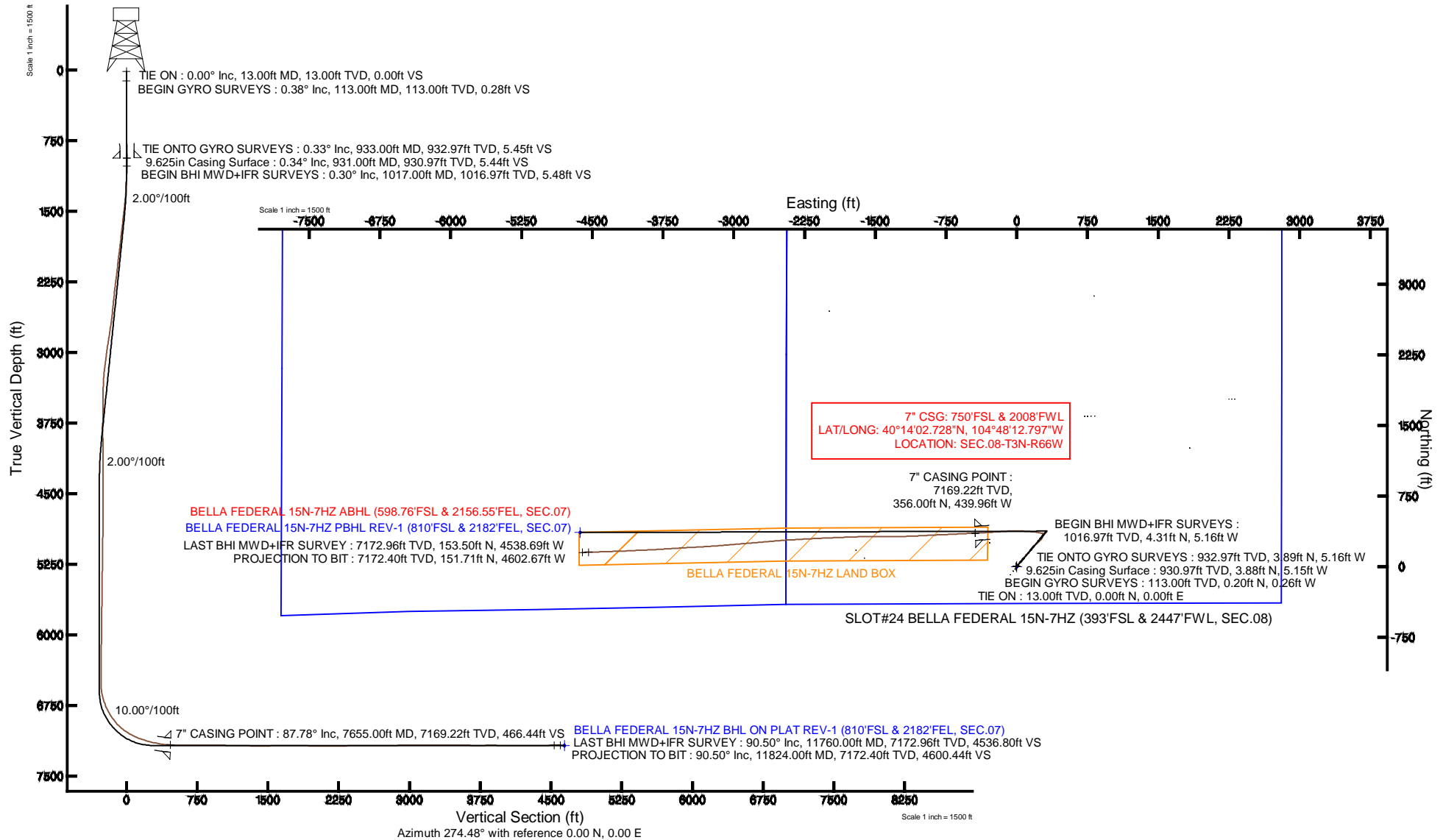


KERR-MCGEE OIL & GAS ONSHORE LP

Location: COLORADO Slot: SLOT#24 BELLA FEDERAL 15N-7HZ (393'FSL & 2447'FWL, SEC.08)
 Field: WELD COUNTY (KERR MCGEE) Well: BELLA FEDERAL 15N-7HZ
 Facility: SEC.08-T3N-R66W Wellbore: BELLA FEDERAL 15N-7HZ PWB

Plot reference wellpath is BELLA FEDERAL 15N-7HZ (REV-A.0) PWP

True vertical depths are referenced to ENSIGN 138 (13' RKB) (RKB)	Grid System: NAD83 / Lambert Colorado SP, Northern Zone (501), US feet
Measured depths are referenced to ENSIGN 138 (13' RKB) (RKB)	North Reference: True north
ENSGN 138 (13' RKB) (RKB) to Mean Sea Level: 4891 feet	Scale: True distance
Mean Sea Level to Mud line (At Slot: SLOT#24 BELLA FEDERAL 15N-7HZ (393'FSL & 2447'FWL, SEC.08)): 0 feet	Depths are in feet
Coordinates are in feet referenced to Slot	Created by: robiale01 on 24/Sep/2013





Actual Wellpath Report

BELLA FEDERAL 15N-7HZ AWP

Page 1 of 6



REFERENCE WELLPATH IDENTIFICATION

Operator	KERR-MCGEE OIL & GAS ONSHORE LP	Slot	SLOT#24 BELLA FEDERAL 15N-7HZ (393'FSL & 2447'FWL, SEC.08)
Area	COLORADO	Well	BELLA FEDERAL 15N-7HZ
Field	WELD COUNTY (KERR MCGEE)	Wellbore	BELLA FEDERAL 15N-7HZ AWB
Facility	SEC.08-T3N-R66W		

REPORT SETUP INFORMATION

Projection System	NAD83 / Lambert Colorado SP, Northern Zone (501), US feet	Software System	WellArchitect® 4.0.0
North Reference	True	User	Robiale01
Scale	0.999957	Report Generated	24/Sep/2013 at 09:32
Convergence at slot	n/a	Database/Source file	WA_ANADARKO/BELLA_FEDERAL_15N-7HZ_AWB.xml

WELLPATH LOCATION

	Local coordinates		Grid coordinates		Geographic coordinates	
	North[ft]	East[ft]	Easting[US ft]	Northing[US ft]	Latitude	Longitude
Slot Location	-1586.93	-778.68	3194882.66	1328532.36	40°13'59.210"N	104°48'07.124"W
Facility Reference Pt			3195648.74	1330125.32	40°14'14.892"N	104°47'57.084"W
Field Reference Pt			3197771.84	1268891.29	40°04'09.600"N	104°47'36.000"W

WELLPATH DATUM

Calculation method	Minimum curvature	ENSIGN 138 (13' RKB) (RKB) to Facility Vertical Datum	4891.00ft
Horizontal Reference Pt	Slot	ENSIGN 138 (13' RKB) (RKB) to Mean Sea Level	4891.00ft
Vertical Reference Pt	ENSIGN 138 (13' RKB) (RKB)	ENSIGN 138 (13' RKB) (RKB) to Mud Line at Slot (SLOT#24 BELLA FEDERAL 15N-7HZ (393'FSL & 2447'FWL, SEC.08))	4891.00ft
MD Reference Pt	ENSIGN 138 (13' RKB) (RKB)	Section Origin	N 0.00, E 0.00 ft
Field Vertical Reference	Mean Sea Level	Section Azimuth	274.48°



Actual Wellpath Report

BELLA FEDERAL 15N-7HZ AWP

Page 2 of 6



REFERENCE WELLPATH IDENTIFICATION			
Operator	KERR-MCGEE OIL & GAS ONSHORE LP	Slot	SLOT#24 BELLA FEDERAL 15N-7HZ (393'FSL & 2447'FWL, SEC.08)
Area	COLORADO	Well	BELLA FEDERAL 15N-7HZ
Field	WELD COUNTY (KERR MCGEE)	Wellbore	BELLA FEDERAL 15N-7HZ AWB
Facility	SEC.08-T3N-R66W		

WELLPATH DATA (113 stations) † = interpolated/extrapolated station

MD [ft]	Inclination [°]	Azimuth [°]	TVD [ft]	Vert Sect [ft]	North [ft]	East [ft]	Latitude	Longitude	DLS [°/100ft]	Comments
0.00†	0.000	307.880	0.00	0.00	0.00	0.00	40°13'59.210"N	104°48'07.124"W	0.00	
13.00	0.000	307.880	13.00	0.00	0.00	0.00	40°13'59.210"N	104°48'07.124"W	0.00	TIE ON
113.00	0.380	307.880	113.00	0.28	0.20	-0.26	40°13'59.212"N	104°48'07.127"W	0.38	BEGIN GYRO SURVEYS
213.00	0.420	318.500	213.00	0.82	0.68	-0.77	40°13'59.217"N	104°48'07.134"W	0.08	
313.00	0.160	328.520	313.00	1.16	1.08	-1.08	40°13'59.221"N	104°48'07.138"W	0.26	
413.00	0.390	306.210	412.99	1.53	1.40	-1.43	40°13'59.224"N	104°48'07.142"W	0.25	
513.00	0.470	305.960	512.99	2.17	1.84	-2.04	40°13'59.228"N	104°48'07.150"W	0.08	
613.00	0.470	294.260	612.99	2.91	2.25	-2.74	40°13'59.232"N	104°48'07.159"W	0.10	
713.00	0.600	299.630	712.98	3.77	2.67	-3.57	40°13'59.236"N	104°48'07.170"W	0.14	
813.00	0.620	298.670	812.98	4.74	3.19	-4.50	40°13'59.242"N	104°48'07.182"W	0.02	
833.00	0.560	309.570	832.98	4.92	3.31	-4.67	40°13'59.243"N	104°48'07.184"W	0.63	
933.00†	0.335	337.776	932.97	5.45	3.89	-5.16	40°13'59.248"N	104°48'07.191"W	0.31	TIE ONTO GYRO SURVEYS
1017.00	0.300	25.600	1016.97	5.48	4.31	-5.16	40°13'59.253"N	104°48'07.190"W	0.31	BEGIN BHI MWD+IFR SURVEYS
1108.00	2.500	46.000	1107.94	4.08	5.91	-3.63	40°13'59.268"N	104°48'07.171"W	2.44	
1199.00	4.500	46.700	1198.77	0.36	9.74	0.40	40°13'59.306"N	104°48'07.119"W	2.20	
1290.00	6.600	43.000	1289.33	-5.29	16.01	6.57	40°13'59.368"N	104°48'07.039"W	2.34	
1381.00	8.600	42.100	1379.53	-12.70	24.88	14.69	40°13'59.456"N	104°48'06.935"W	2.20	
1471.00	10.700	40.200	1468.25	-21.69	36.26	24.60	40°13'59.568"N	104°48'06.807"W	2.36	
1563.00	11.500	41.800	1558.53	-32.24	49.62	36.23	40°13'59.700"N	104°48'06.657"W	0.93	
1654.00	11.100	40.100	1647.77	-42.84	63.08	47.91	40°13'59.833"N	104°48'06.506"W	0.57	
1774.00	10.800	39.400	1765.58	-56.00	80.61	62.49	40°14'00.007"N	104°48'06.318"W	0.27	
1865.00	11.400	42.900	1854.88	-66.47	93.78	74.03	40°14'00.137"N	104°48'06.170"W	0.99	
1956.00	10.600	42.400	1944.21	-77.20	106.55	85.79	40°14'00.263"N	104°48'06.018"W	0.89	
2047.00	11.500	40.000	2033.52	-87.61	119.68	97.27	40°14'00.393"N	104°48'05.870"W	1.11	
2138.00	10.400	40.900	2122.86	-97.76	132.84	108.48	40°14'00.523"N	104°48'05.725"W	1.22	
2228.00	11.400	43.900	2211.24	-108.23	145.39	119.96	40°14'00.647"N	104°48'05.577"W	1.28	
2319.00	11.600	40.900	2300.41	-119.37	158.78	132.19	40°14'00.779"N	104°48'05.420"W	0.69	
2410.00	10.400	38.800	2389.74	-129.43	172.10	143.33	40°14'00.911"N	104°48'05.276"W	1.39	
2502.00	11.000	35.400	2480.14	-138.62	185.73	153.61	40°14'01.045"N	104°48'05.143"W	0.95	
2593.00	12.000	34.800	2569.31	-147.86	200.57	164.04	40°14'01.192"N	104°48'05.009"W	1.11	
2684.00	11.700	45.800	2658.38	-158.73	214.77	176.06	40°14'01.332"N	104°48'04.854"W	2.50	
2776.00	11.300	48.300	2748.54	-171.13	227.27	189.47	40°14'01.456"N	104°48'04.681"W	0.69	
2867.00	12.700	50.200	2837.55	-184.46	239.61	203.82	40°14'01.578"N	104°48'04.496"W	1.60	
3050.00	11.600	45.200	3016.45	-210.86	265.45	232.33	40°14'01.833"N	104°48'04.128"W	0.83	
3141.00	11.300	45.600	3105.64	-222.69	278.14	245.19	40°14'01.959"N	104°48'03.963"W	0.34	
3233.00	10.600	43.400	3195.96	-233.94	290.59	257.44	40°14'02.082"N	104°48'03.805"W	0.89	
3323.00	8.600	29.300	3284.71	-241.96	302.48	266.43	40°14'02.199"N	104°48'03.689"W	3.41	
3416.00	6.500	13.600	3376.91	-245.72	313.66	271.07	40°14'02.310"N	104°48'03.629"W	3.15	
3510.00	5.400	12.500	3470.40	-247.18	323.15	273.28	40°14'02.403"N	104°48'03.600"W	1.18	
3605.00	4.300	8.100	3565.06	-248.02	331.04	274.75	40°14'02.481"N	104°48'03.581"W	1.22	
3702.00	2.500	21.000	3661.89	-248.86	336.61	276.02	40°14'02.536"N	104°48'03.565"W	2.00	
3796.00	2.500	28.800	3755.80	-250.28	340.33	277.74	40°14'02.573"N	104°48'03.543"W	0.36	
3892.00	0.700	319.400	3851.76	-250.73	342.61	278.37	40°14'02.596"N	104°48'03.535"W	2.44	
3986.00	0.800	294.000	3945.75	-249.70	343.31	277.39	40°14'02.603"N	104°48'03.547"W	0.37	
4081.00	0.700	281.200	4040.75	-248.50	343.69	276.22	40°14'02.606"N	104°48'03.562"W	0.20	



Actual Wellpath Report

BELLA FEDERAL 15N-7HZ AWP

Page 3 of 6



REFERENCE WELLPATH IDENTIFICATION			
Operator	KERR-MCGEE OIL & GAS ONSHORE LP	Slot	SLOT#24 BELLA FEDERAL 15N-7HZ (393'FSL & 2447'FWL, SEC.08)
Area	COLORADO	Well	BELLA FEDERAL 15N-7HZ
Field	WELD COUNTY (KERR MCGEE)	Wellbore	BELLA FEDERAL 15N-7HZ AWB
Facility	SEC.08-T3N-R66W		

WELLPATH DATA (113 stations) † = interpolated/extrapolated station

MD [ft]	Inclination [°]	Azimuth [°]	TVD [ft]	Vert Sect [ft]	North [ft]	East [ft]	Latitude	Longitude	DLS [°/100ft]	Comments
4176.00	0.600	5.500	4135.74	-247.93	344.30	275.70	40°14'02.612"N	104°48'03.569"W	0.92	
4556.00	0.200	297.600	4515.73	-247.36	346.59	275.30	40°14'02.635"N	104°48'03.574"W	0.15	
4651.00	0.600	107.500	4610.73	-247.69	346.51	275.63	40°14'02.634"N	104°48'03.570"W	0.84	
4839.00	0.500	355.900	4798.73	-248.53	347.04	276.51	40°14'02.639"N	104°48'03.559"W	0.48	
4934.00	1.200	54.100	4893.72	-249.22	348.03	277.28	40°14'02.649"N	104°48'03.549"W	1.08	
5028.00	1.000	50.500	4987.70	-250.56	349.13	278.71	40°14'02.660"N	104°48'03.530"W	0.23	
5218.00	0.900	72.400	5177.67	-253.14	350.64	281.42	40°14'02.675"N	104°48'03.495"W	0.20	
5408.00	0.700	75.000	5367.66	-255.62	351.39	283.96	40°14'02.682"N	104°48'03.463"W	0.11	
5503.00	0.900	62.000	5462.65	-256.79	351.89	285.18	40°14'02.687"N	104°48'03.447"W	0.28	
5692.00	1.000	67.300	5651.62	-259.51	353.22	288.01	40°14'02.701"N	104°48'03.410"W	0.07	
5881.00	0.700	91.400	5840.60	-262.13	353.83	290.69	40°14'02.707"N	104°48'03.376"W	0.24	
5975.00	0.800	62.000	5934.59	-263.26	354.13	291.84	40°14'02.709"N	104°48'03.361"W	0.42	
6260.00	0.600	108.900	6219.57	-266.38	354.58	295.01	40°14'02.714"N	104°48'03.320"W	0.21	
6449.00	0.900	137.400	6408.56	-268.43	353.16	296.95	40°14'02.700"N	104°48'03.295"W	0.25	
6543.00	1.100	174.800	6502.54	-269.12	351.72	297.53	40°14'02.686"N	104°48'03.288"W	0.71	
6638.00	7.700	275.000	6597.26	-262.90	351.37	291.26	40°14'02.682"N	104°48'03.369"W	8.39	
6733.00	16.800	280.000	6690.00	-242.83	354.31	271.36	40°14'02.711"N	104°48'03.625"W	9.63	
6828.00	25.100	282.500	6778.65	-209.15	361.07	238.11	40°14'02.778"N	104°48'04.054"W	8.79	
6922.00	32.700	276.200	6860.90	-163.95	368.14	193.33	40°14'02.848"N	104°48'04.631"W	8.70	
7015.00	41.400	274.900	6935.05	-107.98	373.49	137.60	40°14'02.901"N	104°48'05.350"W	9.39	
7110.00	51.700	272.400	7000.30	-39.13	377.74	68.87	40°14'02.943"N	104°48'06.236"W	11.01	
7205.00	59.500	270.500	7053.94	39.08	379.67	-9.42	40°14'02.962"N	104°48'07.246"W	8.37	
7299.00	69.100	267.100	7094.66	123.24	377.79	-93.99	40°14'02.943"N	104°48'08.336"W	10.72	
7346.00	72.200	266.100	7110.23	167.16	375.16	-138.25	40°14'02.917"N	104°48'08.907"W	6.89	
7393.00	73.900	266.000	7123.94	211.63	372.06	-183.10	40°14'02.887"N	104°48'09.485"W	3.62	
7440.00	75.300	265.700	7136.42	256.42	368.78	-228.29	40°14'02.854"N	104°48'10.068"W	3.04	
7488.00	78.600	266.200	7147.25	302.66	365.48	-274.93	40°14'02.822"N	104°48'10.669"W	6.95	
7535.00	79.400	266.200	7156.22	348.32	362.42	-320.96	40°14'02.791"N	104°48'11.262"W	1.70	
7583.00	82.600	266.500	7163.73	395.24	359.41	-368.27	40°14'02.762"N	104°48'11.872"W	6.70	
7603.00	84.900	267.400	7165.91	414.95	358.35	-388.12	40°14'02.751"N	104°48'12.128"W	12.34	
7655.00†	87.783	267.400	7169.22	466.44	356.00	-439.96	40°14'02.728"N	104°48'12.797"W	5.54	7" CASING POINT
7695.00	90.000	267.400	7170.00	506.13	354.18	-479.90	40°14'02.710"N	104°48'13.312"W	5.54	
7790.00	89.900	267.700	7170.08	600.43	350.12	-574.82	40°14'02.670"N	104°48'14.536"W	0.33	
7885.00	89.300	266.900	7170.74	694.68	345.65	-669.71	40°14'02.626"N	104°48'15.759"W	1.05	
7980.00	90.200	267.400	7171.16	788.90	340.92	-764.59	40°14'02.579"N	104°48'16.982"W	1.08	
8074.00	89.500	267.100	7171.40	882.15	336.41	-858.48	40°14'02.534"N	104°48'18.193"W	0.81	
8263.00	89.100	267.200	7173.71	1069.59	327.02	-1047.23	40°14'02.441"N	104°48'20.627"W	0.22	
8452.00	88.700	269.300	7177.34	1257.43	321.25	-1236.10	40°14'02.384"N	104°48'23.062"W	1.13	
8546.00	89.400	269.500	7178.90	1351.05	320.26	-1330.08	40°14'02.374"N	104°48'24.274"W	0.77	
8641.00	90.400	269.800	7179.07	1445.71	319.68	-1425.08	40°14'02.369"N	104°48'25.499"W	1.10	
8831.00	90.900	269.500	7176.91	1635.02	318.52	-1615.06	40°14'02.357"N	104°48'27.948"W	0.31	
8927.00	90.300	268.400	7175.91	1730.56	316.76	-1711.04	40°14'02.340"N	104°48'29.186"W	1.31	
9118.00	88.400	267.000	7178.07	1920.20	309.10	-1901.86	40°14'02.264"N	104°48'31.646"W	1.24	
9212.00	89.300	268.200	7179.96	2013.50	305.16	-1995.75	40°14'02.225"N	104°48'32.857"W	1.60	
9307.00	89.800	267.000	7180.71	2107.81	301.18	-2090.66	40°14'02.185"N	104°48'34.080"W	1.37	



Actual Wellpath Report

BELLA FEDERAL 15N-7HZ AWP

Page 4 of 6



REFERENCE WELLPATH IDENTIFICATION

Operator	KERR-MCGEE OIL & GAS ONSHORE LP	Slot	SLOT#24 BELLA FEDERAL 15N-7HZ (393'FSL & 2447'FWL, SEC.08)
Area	COLORADO	Well	BELLA FEDERAL 15N-7HZ
Field	WELD COUNTY (KERR MCGEE)	Wellbore	BELLA FEDERAL 15N-7HZ AWB
Facility	SEC.08-T3N-R66W		

WELLPATH DATA (113 stations)

MD [ft]	Inclination [°]	Azimuth [°]	TVD [ft]	Vert Sect [ft]	North [ft]	East [ft]	Latitude	Longitude	DLS [°/100ft]	Comments
9402.00	90.300	267.000	7180.62	2202.00	296.21	-2185.53	40°14'02.136"N	104°48'35.304"W	0.53	
9591.00	91.800	267.000	7177.16	2389.36	286.32	-2374.24	40°14'02.038"N	104°48'37.737"W	0.79	
9686.00	90.700	265.900	7175.09	2483.40	280.44	-2469.03	40°14'01.980"N	104°48'38.959"W	1.64	
9781.00	89.600	265.200	7174.84	2577.24	273.07	-2563.74	40°14'01.907"N	104°48'40.180"W	1.37	
9971.00	90.400	264.900	7174.84	2764.67	256.68	-2753.03	40°14'01.745"N	104°48'42.621"W	0.45	
10065.00	91.000	264.900	7173.69	2857.35	248.32	-2846.65	40°14'01.662"N	104°48'43.828"W	0.64	
10160.00	90.700	265.700	7172.28	2951.12	240.54	-2941.32	40°14'01.585"N	104°48'45.049"W	0.90	
10254.00	89.200	265.200	7172.36	3043.95	233.08	-3035.02	40°14'01.511"N	104°48'46.257"W	1.68	
10443.00	91.200	266.000	7171.70	3230.67	218.58	-3223.45	40°14'01.368"N	104°48'48.686"W	1.14	
10539.00	90.600	266.500	7170.20	3325.67	212.30	-3319.23	40°14'01.306"N	104°48'49.921"W	0.81	
10633.00	89.200	267.000	7170.36	3418.81	206.98	-3413.08	40°14'01.253"N	104°48'51.131"W	1.58	
10729.00	89.000	266.500	7171.87	3513.93	201.53	-3508.91	40°14'01.199"N	104°48'52.367"W	0.56	
10823.00	89.500	266.900	7173.10	3607.05	196.12	-3602.75	40°14'01.145"N	104°48'53.577"W	0.68	
10918.00	89.700	265.900	7173.76	3701.11	190.16	-3697.56	40°14'01.086"N	104°48'54.799"W	1.07	
11012.00	90.600	266.700	7173.51	3794.15	184.09	-3791.36	40°14'01.026"N	104°48'56.009"W	1.28	
11107.00	89.700	267.200	7173.27	3888.33	179.04	-3886.22	40°14'00.976"N	104°48'57.232"W	1.08	
11201.00	90.100	267.700	7173.43	3981.62	174.86	-3980.13	40°14'00.935"N	104°48'58.443"W	0.68	
11296.00	89.300	267.100	7173.93	4075.89	170.55	-4075.03	40°14'00.892"N	104°48'59.666"W	1.05	
11391.00	89.600	267.800	7174.84	4170.17	166.32	-4169.93	40°14'00.850"N	104°49'00.890"W	0.80	
11486.00	90.000	267.900	7175.17	4264.53	162.76	-4264.86	40°14'00.815"N	104°49'02.114"W	0.43	
11581.00	90.600	267.900	7174.67	4358.90	159.28	-4359.80	40°14'00.780"N	104°49'03.338"W	0.63	
11760.00	90.500	268.400	7172.96	4536.80	153.50	-4538.69	40°14'00.723"N	104°49'05.644"W	0.28	LAST BHI MWD+IFR SURVEY
11824.00	90.500	268.400	7172.40	4600.44	151.71	-4602.67	40°14'00.705"N	104°49'06.469"W	0.00	PROJECTION TO BIT

HOLE & CASING SECTIONS - Ref Wellbore: BELLA FEDERAL 15N-7HZ AWB Ref Wellpath: BELLA FEDERAL 15N-7HZ AWP

String/Diameter	Start MD [ft]	End MD [ft]	Interval [ft]	Start TVD [ft]	End TVD [ft]	Start N/S [ft]	Start E/W [ft]	End N/S [ft]	End E/W [ft]
13.5in Open Hole	13.00	931.00	918.00	13.00	930.97	0.00	0.00	3.88	-5.15
9.625in Casing Surface	13.00	931.00	918.00	13.00	930.97	0.00	0.00	3.88	-5.15
8.75in Open Hole	931.00	7665.00	6734.00	930.97	7169.56	3.88	-5.15	355.54	-449.94
7in Casing Intermediate	13.00	7655.00	7642.00	13.00	7169.22	0.00	0.00	356.00	-439.96
6.125in Open Hole	7665.00	11824.00	4159.00	7169.56	7172.40	355.54	-449.94	151.71	-4602.67



Actual Wellpath Report

BELLA FEDERAL 15N-7HZ AWP

Page 5 of 6



REFERENCE WELLPATH IDENTIFICATION			
Operator	KERR-MCGEE OIL & GAS ONSHORE LP	Slot	SLOT#24 BELLA FEDERAL 15N-7HZ (393'FSL & 2447'FWL, SEC.08)
Area	COLORADO	Well	BELLA FEDERAL 15N-7HZ
Field	WELD COUNTY (KERR MCGEE)	Wellbore	BELLA FEDERAL 15N-7HZ AWB
Facility	SEC.08-T3N-R66W		

TARGETS									
Name	MD [ft]	TVD [ft]	North [ft]	East [ft]	Grid East [US ft]	Grid North [US ft]	Latitude	Longitude	Shape
BELLA FEDERAL SECTION 7 LINES		15.00	1759.98	-13.73	3194855.08	1330292.10	40°14'16.602"N	104°48'07.301"W	polygon
BELLA FEDERAL SECTION 8 LINES		15.00	1759.98	-13.73	3194855.08	1330292.10	40°14'16.602"N	104°48'07.301"W	polygon
MILLER ESTATES 8-12K (150' RADIUS)		15.00	1642.26	-1783.09	3193086.77	1330160.46	40°14'15.438"N	104°48'30.116"W	circle
MILLER ESTATES 8-13K (150' RADIUS)		15.00	89.24	-1615.96	3193266.12	1328608.87	40°14'00.091"N	104°48'27.960"W	circle
BELLA FEDERAL 15N-7HZ LAND BOX		7150.00	0.00	0.00	3194882.66	1328532.36	40°13'59.210"N	104°48'07.124"W	polygon
BELLA FEDERAL 15N-7HZ BHL ON PLAT REV-1 (810'FSL & 2182'FEL, SEC.07)		7176.00	362.95	-4628.12	3190252.03	1328858.85	40°14'02.792"N	104°49'06.798"W	point

WELLPATH COMPOSITION - Ref Wellbore: BELLA FEDERAL 15N-7HZ AWB Ref Wellpath: BELLA FEDERAL 15N-7HZ AWP				
Start MD [ft]	End MD [ft]	Positional Uncertainty Model	Log Name/Comment	Wellbore
13.00	833.00	Generic gyro - continuous (Standard)	MS GYRODATA SURVEYS <113-833>	BELLA FEDERAL 15N-7HZ AWB
833.00	7603.00	NaviTrak (IFR)	BHI NAVITRAK MWD+IFR 8 3/4" <1017-7603>	BELLA FEDERAL 15N-7HZ AWB
7603.00	11760.00	NaviTrak (IFR)	BHI NAVITRAK MWD+IFR 6 1/8" <7695-11760>	BELLA FEDERAL 15N-7HZ AWB
11760.00	11824.00	Blind Drilling (std)	Projection to bit	BELLA FEDERAL 15N-7HZ AWB



Actual Wellpath Report

BELLA FEDERAL 15N-7HZ AWP

Page 6 of 6



REFERENCE WELLPATH IDENTIFICATION			
Operator	KERR-MCGEE OIL & GAS ONSHORE LP	Slot	SLOT#24 BELLA FEDERAL 15N-7HZ (393'FSL & 2447'FWL, SEC.08)
Area	COLORADO	Well	BELLA FEDERAL 15N-7HZ
Field	WELD COUNTY (KERR MCGEE)	Wellbore	BELLA FEDERAL 15N-7HZ AWB
Facility	SEC.08-T3N-R66W		

WELLPATH COMMENTS				
MD [ft]	Inclination [°]	Azimuth [°]	TVD [ft]	Comment
13.00	0.000	307.880	13.00	TIE ON
113.00	0.380	307.880	113.00	BEGIN GYRO SURVEYS
933.00	0.335	337.776	932.97	TIE ONTO GYRO SURVEYS
1017.00	0.300	25.600	1016.97	BEGIN BHI MWD+IFR SURVEYS
7655.00	87.783	267.400	7169.22	7" CASING POINT
11760.00	90.500	268.400	7172.96	LAST BHI MWD+IFR SURVEY
11824.00	90.500	268.400	7172.40	PROJECTION TO BIT