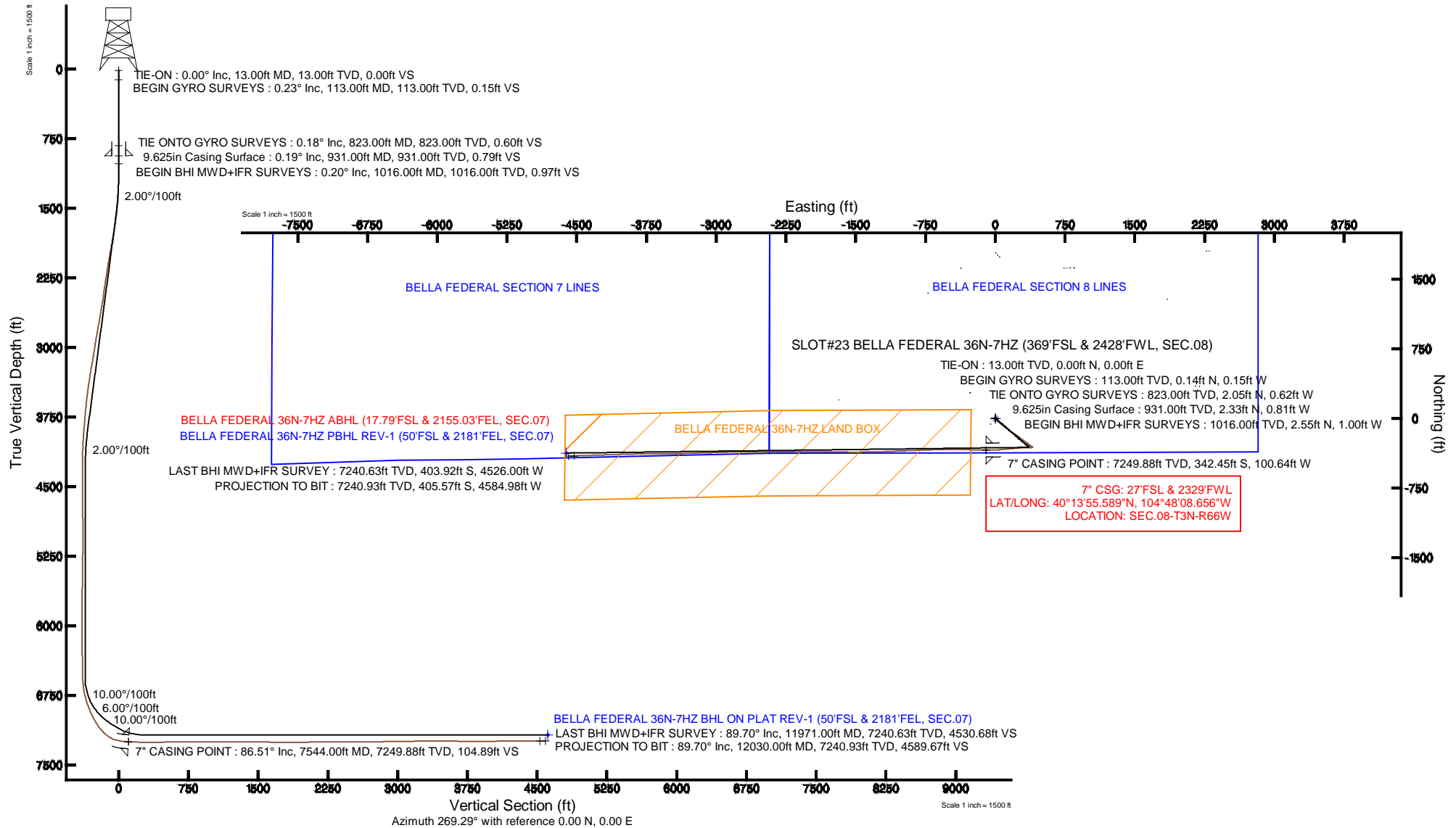


KERR-MCGEE OIL & GAS ONSHORE LP

Location: COLORADO Slot: SLOT#23 BELLA FEDERAL 36N-7HZ (369°FSL & 2428°FWL, SEC.08)
 Field: WELD COUNTY (KERR MCGEE) Well: BELLA FEDERAL 36N-7HZ
 Facility: SEC.08-T3N-R66W Wellbore: BELLA FEDERAL 36N-7HZ PWB

Plot reference wellpath is BELLA FEDERAL 36N-7HZ (REV-A.0) PWP

| | |
|--|--|
| True vertical depths are referenced to ENSIGN 138 (13' RKB) (RKB) | Grid System: NAD83 / Lambert Colorado SP, Northern Zone (501), US feet |
| Measured depths are referenced to ENSIGN 138 (13' RKB) (RKB) | North Reference: True north |
| ENSGN 138 (13' RKB) to Mean Sea Level: 4891 feet | Scale: True distance |
| Mean Sea Level to Mud line (At Slot: SLOT#23 BELLA FEDERAL 36N-7HZ (369°FSL & 2428°FWL, SEC.08)): 0 feet | Depths are in feet |
| Coordinates are in feet referenced to Slot | Created by: robiale01 on 24/Sep/2013 |





Actual Wellpath Report

BELLA FEDERAL 36N-7HZ AWP

Page 1 of 6



| REFERENCE WELLPATH IDENTIFICATION | | | |
|-----------------------------------|---------------------------------|----------|--|
| Operator | KERR-MCGEE OIL & GAS ONSHORE LP | Slot | SLOT#23 BELLA FEDERAL 36N-7HZ (369'FSL & 2428'FWL, SEC.08) |
| Area | COLORADO | Well | BELLA FEDERAL 36N-7HZ |
| Field | WELD COUNTY (KERR MCGEE) | Wellbore | BELLA FEDERAL 36N-7HZ AWB |
| Facility | SEC.08-T3N-R66W | | |

| REPORT SETUP INFORMATION | | | |
|--------------------------|---|----------------------|---|
| Projection System | NAD83 / Lambert Colorado SP, Northern Zone (501), US feet | Software System | WellArchitect® 4.0.0 |
| North Reference | True | User | Robiale01 |
| Scale | 0.999957 | Report Generated | 24/Sep/2013 at 10:14 |
| Convergence at slot | n/a | Database/Source file | WA_ANADARKO/BELLA_FEDERAL_36N-7HZ_AWB.xml |

| WELLPATH LOCATION | | | | | | |
|-----------------------|-------------------|----------|------------------|-----------------|------------------------|-----------------|
| | Local coordinates | | Grid coordinates | | Geographic coordinates | |
| | North[ft] | East[ft] | Easting[US ft] | Northing[US ft] | Latitude | Longitude |
| Slot Location | -1610.91 | -796.83 | 3194864.70 | 1328508.23 | 40°13'58.973"N | 104°48'07.358"W |
| Facility Reference Pt | | | 3195648.74 | 1330125.32 | 40°14'14.892"N | 104°47'57.084"W |
| Field Reference Pt | | | 3197771.84 | 1268891.29 | 40°04'09.600"N | 104°47'36.000"W |

| WELLPATH DATUM | | | |
|--------------------------|----------------------------|---|-------------------|
| Calculation method | Minimum curvature | ENSIGN 138 (13' RKB) (RKB) to Facility Vertical Datum | 4891.00ft |
| Horizontal Reference Pt | Slot | ENSIGN 138 (13' RKB) (RKB) to Mean Sea Level | 4891.00ft |
| Vertical Reference Pt | ENSIGN 138 (13' RKB) (RKB) | ENSIGN 138 (13' RKB) (RKB) to Mud Line at Slot (SLOT#23 BELLA FEDERAL 36N-7HZ (369'FSL & 2428'FWL, SEC.08)) | 4891.00ft |
| MD Reference Pt | ENSIGN 138 (13' RKB) (RKB) | Section Origin | N 0.00, E 0.00 ft |
| Field Vertical Reference | Mean Sea Level | Section Azimuth | 264.95° |



Actual Wellpath Report

BELLA FEDERAL 36N-7HZ AWP

Page 2 of 6



| REFERENCE WELLPATH IDENTIFICATION | | | |
|-----------------------------------|---------------------------------|----------|--|
| Operator | KERR-MCGEE OIL & GAS ONSHORE LP | Slot | SLOT#23 BELLA FEDERAL 36N-7HZ (369'FSL & 2428'FWL, SEC.08) |
| Area | COLORADO | Well | BELLA FEDERAL 36N-7HZ |
| Field | WELD COUNTY (KERR MCGEE) | Wellbore | BELLA FEDERAL 36N-7HZ AWB |
| Facility | SEC.08-T3N-R66W | | |

WELLPATH DATA (118 stations) † = interpolated/extrapolated station

| MD [ft] | Inclination [°] | Azimuth [°] | TVD [ft] | Vert Sect [ft] | North [ft] | East [ft] | Latitude | Longitude | DLS [°/100ft] | Comments |
|---------|-----------------|-------------|----------|----------------|------------|-----------|----------------|-----------------|---------------|---------------------------|
| 0.00† | 0.000 | 312.880 | 0.00 | 0.00 | 0.00 | 0.00 | 40°13'58.973"N | 104°48'07.358"W | 0.00 | |
| 13.00 | 0.000 | 312.880 | 13.00 | 0.00 | 0.00 | 0.00 | 40°13'58.973"N | 104°48'07.358"W | 0.00 | TIE-ON |
| 113.00 | 0.230 | 312.880 | 113.00 | 0.13 | 0.14 | -0.15 | 40°13'58.974"N | 104°48'07.360"W | 0.23 | BEGIN GYRO SURVEYS |
| 213.00 | 0.170 | 347.520 | 213.00 | 0.29 | 0.42 | -0.33 | 40°13'58.977"N | 104°48'07.362"W | 0.13 | |
| 313.00 | 0.120 | 339.650 | 313.00 | 0.33 | 0.66 | -0.39 | 40°13'58.980"N | 104°48'07.363"W | 0.05 | |
| 413.00 | 0.040 | 18.440 | 413.00 | 0.35 | 0.79 | -0.42 | 40°13'58.981"N | 104°48'07.363"W | 0.09 | |
| 513.00 | 0.200 | 347.020 | 513.00 | 0.36 | 1.00 | -0.45 | 40°13'58.983"N | 104°48'07.364"W | 0.17 | |
| 613.00 | 0.250 | 354.310 | 613.00 | 0.39 | 1.38 | -0.51 | 40°13'58.987"N | 104°48'07.365"W | 0.06 | |
| 713.00 | 0.100 | 357.060 | 713.00 | 0.38 | 1.69 | -0.54 | 40°13'58.990"N | 104°48'07.365"W | 0.15 | |
| 813.00 | 0.280 | 344.210 | 813.00 | 0.43 | 2.01 | -0.61 | 40°13'58.993"N | 104°48'07.366"W | 0.18 | |
| 823.00 | 0.180 | 330.380 | 823.00 | 0.44 | 2.05 | -0.62 | 40°13'58.993"N | 104°48'07.366"W | 1.14 | TIE ONTO GYRO SURVEYS |
| 1016.00 | 0.200 | 316.100 | 1016.00 | 0.78 | 2.55 | -1.00 | 40°13'58.998"N | 104°48'07.371"W | 0.03 | BEGIN BHI MWD+IFR SURVEYS |
| 1120.00 | 1.200 | 141.800 | 1119.99 | 0.29 | 1.83 | -0.46 | 40°13'58.991"N | 104°48'07.364"W | 1.35 | |
| 1212.00 | 2.600 | 161.700 | 1211.94 | -0.71 | -0.91 | 0.79 | 40°13'58.964"N | 104°48'07.348"W | 1.66 | |
| 1303.00 | 4.500 | 145.900 | 1302.76 | -2.92 | -5.83 | 3.44 | 40°13'58.915"N | 104°48'07.314"W | 2.33 | |
| 1393.00 | 6.600 | 142.200 | 1392.33 | -7.43 | -12.84 | 8.59 | 40°13'58.846"N | 104°48'07.247"W | 2.37 | |
| 1484.00 | 8.300 | 137.800 | 1482.56 | -14.23 | -21.84 | 16.21 | 40°13'58.757"N | 104°48'07.149"W | 1.97 | |
| 1575.00 | 9.600 | 133.200 | 1572.45 | -23.24 | -31.90 | 26.16 | 40°13'58.658"N | 104°48'07.021"W | 1.63 | |
| 1681.00 | 10.700 | 125.600 | 1676.80 | -36.60 | -43.68 | 40.60 | 40°13'58.541"N | 104°48'06.834"W | 1.63 | |
| 1772.00 | 12.200 | 127.000 | 1765.98 | -50.14 | -54.38 | 55.15 | 40°13'58.436"N | 104°48'06.647"W | 1.68 | |
| 1863.00 | 11.800 | 128.000 | 1855.00 | -64.08 | -65.90 | 70.16 | 40°13'58.322"N | 104°48'06.453"W | 0.50 | |
| 1953.00 | 12.700 | 124.100 | 1942.95 | -78.48 | -77.11 | 85.61 | 40°13'58.211"N | 104°48'06.254"W | 1.36 | |
| 2044.00 | 12.100 | 124.700 | 2031.82 | -93.57 | -88.15 | 101.73 | 40°13'58.102"N | 104°48'06.046"W | 0.67 | |
| 2136.00 | 11.400 | 126.800 | 2121.90 | -107.75 | -99.08 | 116.94 | 40°13'57.994"N | 104°48'05.850"W | 0.89 | |
| 2226.00 | 11.600 | 129.500 | 2210.09 | -120.83 | -110.17 | 131.04 | 40°13'57.884"N | 104°48'05.668"W | 0.64 | |
| 2317.00 | 11.800 | 132.000 | 2299.20 | -133.69 | -122.21 | 145.02 | 40°13'57.765"N | 104°48'05.488"W | 0.60 | |
| 2408.00 | 10.600 | 133.400 | 2388.47 | -145.58 | -134.19 | 158.01 | 40°13'57.647"N | 104°48'05.321"W | 1.35 | |
| 2499.00 | 10.700 | 126.700 | 2477.90 | -157.43 | -144.99 | 170.87 | 40°13'57.540"N | 104°48'05.155"W | 1.36 | |
| 2591.00 | 10.900 | 122.600 | 2568.27 | -170.69 | -154.78 | 185.05 | 40°13'57.443"N | 104°48'04.972"W | 0.86 | |
| 2682.00 | 12.000 | 121.100 | 2657.46 | -185.14 | -164.30 | 200.39 | 40°13'57.349"N | 104°48'04.774"W | 1.25 | |
| 2774.00 | 12.300 | 123.900 | 2747.40 | -200.48 | -174.71 | 216.72 | 40°13'57.247"N | 104°48'04.564"W | 0.72 | |
| 2864.00 | 12.500 | 125.400 | 2835.30 | -215.35 | -185.70 | 232.61 | 40°13'57.138"N | 104°48'04.359"W | 0.42 | |
| 2956.00 | 12.300 | 128.700 | 2925.16 | -230.00 | -197.59 | 248.38 | 40°13'57.020"N | 104°48'04.156"W | 0.80 | |
| 3047.00 | 11.100 | 129.700 | 3014.26 | -243.22 | -209.25 | 262.68 | 40°13'56.905"N | 104°48'03.971"W | 1.34 | |
| 3139.00 | 11.800 | 127.100 | 3104.43 | -256.49 | -220.58 | 277.00 | 40°13'56.793"N | 104°48'03.787"W | 0.95 | |
| 3230.00 | 11.800 | 124.900 | 3193.51 | -270.52 | -231.52 | 292.05 | 40°13'56.685"N | 104°48'03.592"W | 0.49 | |
| 3321.00 | 11.900 | 124.900 | 3282.57 | -284.84 | -242.21 | 307.38 | 40°13'56.580"N | 104°48'03.395"W | 0.11 | |
| 3414.00 | 10.100 | 125.300 | 3373.86 | -298.41 | -252.41 | 321.90 | 40°13'56.479"N | 104°48'03.208"W | 1.94 | |
| 3509.00 | 9.200 | 124.400 | 3467.51 | -310.62 | -261.51 | 334.96 | 40°13'56.389"N | 104°48'03.039"W | 0.96 | |
| 3606.00 | 7.900 | 127.200 | 3563.43 | -321.54 | -269.92 | 346.67 | 40°13'56.306"N | 104°48'02.888"W | 1.41 | |
| 3701.00 | 7.700 | 132.600 | 3657.56 | -330.66 | -278.18 | 356.56 | 40°13'56.224"N | 104°48'02.761"W | 0.80 | |
| 3796.00 | 7.300 | 133.000 | 3751.74 | -338.98 | -286.60 | 365.65 | 40°13'56.141"N | 104°48'02.643"W | 0.42 | |
| 3891.00 | 6.200 | 129.600 | 3846.08 | -346.66 | -293.99 | 374.02 | 40°13'56.068"N | 104°48'02.536"W | 1.23 | |
| 3985.00 | 5.000 | 126.000 | 3939.63 | -353.36 | -299.63 | 381.25 | 40°13'56.012"N | 104°48'02.442"W | 1.33 | |
| 4079.00 | 3.900 | 134.400 | 4033.35 | -358.53 | -304.28 | 386.85 | 40°13'55.966"N | 104°48'02.370"W | 1.36 | |



Actual Wellpath Report

BELLA FEDERAL 36N-7HZ AWP

Page 3 of 6



| REFERENCE WELLPATH IDENTIFICATION | | | |
|-----------------------------------|---------------------------------|----------|--|
| Operator | KERR-MCGEE OIL & GAS ONSHORE LP | Slot | SLOT#23 BELLA FEDERAL 36N-7HZ (369'FSL & 2428'FWL, SEC.08) |
| Area | COLORADO | Well | BELLA FEDERAL 36N-7HZ |
| Field | WELD COUNTY (KERR MCGEE) | Wellbore | BELLA FEDERAL 36N-7HZ AWB |
| Facility | SEC.08-T3N-R66W | | |

WELLPATH DATA (118 stations) † = interpolated/extrapolated station

| MD [ft] | Inclination [°] | Azimuth [°] | TVD [ft] | Vert Sect [ft] | North [ft] | East [ft] | Latitude | Longitude | DLS [°/100ft] | Comments |
|----------|-----------------|-------------|----------|----------------|------------|-----------|----------------|-----------------|---------------|-----------------|
| 4175.00 | 2.600 | 133.800 | 4129.19 | -362.09 | -308.07 | 390.75 | 40°13'55.929"N | 104°48'02.320"W | 1.35 | |
| 4269.00 | 0.700 | 27.800 | 4223.16 | -363.80 | -309.04 | 392.56 | 40°13'55.919"N | 104°48'02.297"W | 3.06 | |
| 4364.00 | 2.000 | 1.700 | 4318.13 | -364.31 | -306.87 | 392.88 | 40°13'55.941"N | 104°48'02.292"W | 1.48 | |
| 4458.00 | 1.000 | 5.500 | 4412.10 | -364.65 | -304.41 | 393.00 | 40°13'55.965"N | 104°48'02.291"W | 1.07 | |
| 4553.00 | 0.800 | 232.900 | 4507.10 | -364.24 | -303.98 | 392.55 | 40°13'55.969"N | 104°48'02.297"W | 1.74 | |
| 4649.00 | 1.300 | 221.200 | 4603.08 | -362.89 | -305.21 | 391.30 | 40°13'55.957"N | 104°48'02.313"W | 0.56 | |
| 4743.00 | 0.300 | 228.400 | 4697.07 | -361.92 | -306.17 | 390.42 | 40°13'55.947"N | 104°48'02.324"W | 1.07 | |
| 4933.00 | 0.400 | 255.800 | 4887.06 | -360.87 | -306.67 | 389.40 | 40°13'55.943"N | 104°48'02.337"W | 0.10 | |
| 5312.00 | 0.600 | 108.900 | 5266.06 | -361.37 | -307.63 | 390.00 | 40°13'55.933"N | 104°48'02.330"W | 0.25 | |
| 5690.00 | 1.200 | 85.600 | 5644.01 | -367.14 | -307.97 | 395.82 | 40°13'55.930"N | 104°48'02.255"W | 0.18 | |
| 5785.00 | 0.200 | 104.600 | 5739.00 | -368.29 | -307.94 | 396.97 | 40°13'55.930"N | 104°48'02.240"W | 1.07 | |
| 5974.00 | 0.600 | 90.300 | 5928.00 | -369.59 | -308.02 | 398.28 | 40°13'55.929"N | 104°48'02.223"W | 0.22 | |
| 6071.00 | 0.700 | 298.100 | 6025.00 | -369.60 | -307.75 | 398.26 | 40°13'55.932"N | 104°48'02.223"W | 1.30 | |
| 6262.00 | 0.900 | 237.600 | 6215.98 | -367.29 | -308.00 | 395.97 | 40°13'55.929"N | 104°48'02.253"W | 0.43 | |
| 6451.00 | 1.100 | 217.100 | 6404.95 | -364.75 | -310.25 | 393.62 | 40°13'55.907"N | 104°48'02.283"W | 0.22 | |
| 6546.00 | 1.000 | 204.000 | 6499.94 | -363.74 | -311.73 | 392.73 | 40°13'55.892"N | 104°48'02.294"W | 0.27 | |
| 6640.00 | 3.400 | 259.300 | 6593.87 | -360.56 | -313.00 | 389.66 | 40°13'55.880"N | 104°48'02.334"W | 3.14 | |
| 6734.00 | 10.000 | 267.000 | 6687.18 | -349.62 | -313.94 | 378.76 | 40°13'55.871"N | 104°48'02.475"W | 7.07 | |
| 6828.00 | 14.800 | 269.300 | 6778.96 | -329.48 | -314.52 | 358.59 | 40°13'55.865"N | 104°48'02.735"W | 5.13 | |
| 6924.00 | 20.300 | 269.200 | 6870.45 | -300.63 | -314.90 | 329.65 | 40°13'55.861"N | 104°48'03.108"W | 5.73 | |
| 6988.00 | 23.200 | 268.900 | 6929.89 | -276.97 | -315.30 | 305.95 | 40°13'55.857"N | 104°48'03.413"W | 4.53 | |
| 7019.00 | 24.900 | 267.600 | 6958.20 | -264.36 | -315.69 | 293.32 | 40°13'55.853"N | 104°48'03.576"W | 5.74 | |
| 7066.00 | 27.500 | 265.100 | 7000.37 | -243.62 | -317.03 | 272.62 | 40°13'55.840"N | 104°48'03.843"W | 6.01 | |
| 7116.00 | 31.400 | 265.400 | 7043.90 | -219.05 | -319.06 | 248.12 | 40°13'55.820"N | 104°48'04.159"W | 7.81 | |
| 7163.00 | 35.500 | 265.600 | 7083.10 | -193.15 | -321.09 | 222.30 | 40°13'55.800"N | 104°48'04.492"W | 8.73 | |
| 7211.00 | 39.900 | 264.900 | 7121.07 | -163.80 | -323.53 | 193.06 | 40°13'55.776"N | 104°48'04.869"W | 9.21 | |
| 7258.00 | 46.500 | 265.500 | 7155.32 | -131.64 | -326.21 | 161.01 | 40°13'55.749"N | 104°48'05.282"W | 14.07 | |
| 7306.00 | 54.800 | 263.600 | 7185.73 | -94.56 | -329.77 | 124.10 | 40°13'55.714"N | 104°48'05.758"W | 17.56 | |
| 7353.00 | 62.400 | 263.800 | 7210.20 | -54.49 | -334.16 | 84.26 | 40°13'55.671"N | 104°48'06.272"W | 16.17 | |
| 7401.00 | 72.100 | 265.300 | 7228.74 | -10.28 | -338.34 | 40.24 | 40°13'55.630"N | 104°48'06.839"W | 20.41 | |
| 7458.00 | 81.300 | 267.600 | 7241.84 | 45.11 | -341.75 | -15.06 | 40°13'55.596"N | 104°48'07.552"W | 16.61 | |
| 7495.00 | 85.000 | 269.700 | 7246.25 | 81.76 | -342.61 | -51.78 | 40°13'55.587"N | 104°48'08.026"W | 11.48 | |
| 7544.00† | 86.514 | 270.682 | 7249.88 | 130.42 | -342.45 | -100.64 | 40°13'55.589"N | 104°48'08.656"W | 3.68 | 7" CASING POINT |
| 7605.00 | 88.400 | 271.900 | 7252.58 | 190.98 | -341.08 | -161.56 | 40°13'55.602"N | 104°48'09.441"W | 3.68 | |
| 7700.00 | 89.800 | 271.600 | 7254.07 | 285.30 | -338.18 | -256.50 | 40°13'55.631"N | 104°48'10.665"W | 1.51 | |
| 7794.00 | 90.200 | 271.100 | 7254.07 | 378.71 | -335.96 | -350.47 | 40°13'55.653"N | 104°48'11.877"W | 0.68 | |
| 7888.00 | 90.300 | 270.300 | 7253.66 | 472.24 | -334.81 | -444.47 | 40°13'55.664"N | 104°48'13.089"W | 0.86 | |
| 7983.00 | 90.400 | 269.100 | 7253.08 | 566.91 | -335.31 | -539.46 | 40°13'55.659"N | 104°48'14.313"W | 1.27 | |
| 8078.00 | 91.000 | 269.100 | 7251.92 | 661.65 | -336.80 | -634.44 | 40°13'55.645"N | 104°48'15.538"W | 0.63 | |
| 8173.00 | 90.600 | 268.000 | 7250.60 | 756.45 | -339.21 | -729.40 | 40°13'55.621"N | 104°48'16.762"W | 1.23 | |
| 8267.00 | 90.200 | 267.800 | 7249.94 | 850.32 | -342.65 | -823.34 | 40°13'55.587"N | 104°48'17.974"W | 0.48 | |
| 8457.00 | 89.800 | 267.600 | 7249.94 | 1040.10 | -350.28 | -1013.18 | 40°13'55.511"N | 104°48'20.421"W | 0.24 | |
| 8647.00 | 90.400 | 267.700 | 7249.61 | 1229.89 | -358.07 | -1203.02 | 40°13'55.434"N | 104°48'22.869"W | 0.32 | |
| 8741.00 | 90.000 | 268.700 | 7249.28 | 1323.74 | -361.02 | -1296.97 | 40°13'55.405"N | 104°48'24.080"W | 1.15 | |
| 8836.00 | 89.300 | 269.400 | 7249.86 | 1418.49 | -362.60 | -1391.96 | 40°13'55.389"N | 104°48'25.305"W | 1.04 | |



Actual Wellpath Report

BELLA FEDERAL 36N-7HZ AWP

Page 4 of 6



| REFERENCE WELLPATH IDENTIFICATION | | | |
|-----------------------------------|---------------------------------|----------|--|
| Operator | KERR-MCGEE OIL & GAS ONSHORE LP | Slot | SLOT#23 BELLA FEDERAL 36N-7HZ (369'FSL & 2428'FWL, SEC.08) |
| Area | COLORADO | Well | BELLA FEDERAL 36N-7HZ |
| Field | WELD COUNTY (KERR MCGEE) | Wellbore | BELLA FEDERAL 36N-7HZ AWB |
| Facility | SEC.08-T3N-R66W | | |

WELLPATH DATA (118 stations)

| MD [ft] | Inclination [°] | Azimuth [°] | TVD [ft] | Vert Sect [ft] | North [ft] | East [ft] | Latitude | Longitude | DLS [°/100ft] | Comments |
|----------|-----------------|-------------|----------|----------------|------------|-----------|----------------|-----------------|---------------|-------------------------|
| 8931.00 | 89.000 | 270.000 | 7251.27 | 1513.15 | -363.09 | -1486.94 | 40°13'55.385"N | 104°48'26.530"W | 0.71 | |
| 9026.00 | 89.000 | 270.200 | 7252.93 | 1607.75 | -362.93 | -1581.93 | 40°13'55.386"N | 104°48'27.754"W | 0.21 | |
| 9120.00 | 88.900 | 270.100 | 7254.65 | 1701.35 | -362.68 | -1675.91 | 40°13'55.388"N | 104°48'28.966"W | 0.15 | |
| 9215.00 | 89.400 | 270.300 | 7256.06 | 1795.94 | -362.35 | -1770.90 | 40°13'55.392"N | 104°48'30.191"W | 0.57 | |
| 9310.00 | 90.600 | 271.000 | 7256.06 | 1890.47 | -361.27 | -1865.89 | 40°13'55.402"N | 104°48'31.416"W | 1.46 | |
| 9405.00 | 91.100 | 271.100 | 7254.65 | 1984.92 | -359.53 | -1960.87 | 40°13'55.419"N | 104°48'32.640"W | 0.54 | |
| 9593.00 | 90.500 | 269.900 | 7252.03 | 2172.01 | -357.89 | -2148.84 | 40°13'55.435"N | 104°48'35.064"W | 0.71 | |
| 9783.00 | 90.400 | 269.700 | 7250.53 | 2361.33 | -358.55 | -2338.83 | 40°13'55.429"N | 104°48'37.513"W | 0.12 | |
| 9974.00 | 89.600 | 270.100 | 7250.53 | 2551.61 | -358.89 | -2529.83 | 40°13'55.425"N | 104°48'39.976"W | 0.47 | |
| 10069.00 | 90.000 | 270.200 | 7250.87 | 2646.22 | -358.64 | -2624.83 | 40°13'55.428"N | 104°48'41.201"W | 0.43 | |
| 10165.00 | 90.700 | 268.900 | 7250.28 | 2741.90 | -359.39 | -2720.82 | 40°13'55.420"N | 104°48'42.439"W | 1.54 | |
| 10260.00 | 91.100 | 268.700 | 7248.79 | 2836.68 | -361.38 | -2815.79 | 40°13'55.400"N | 104°48'43.663"W | 0.47 | |
| 10355.00 | 90.200 | 268.100 | 7247.71 | 2931.50 | -364.03 | -2910.74 | 40°13'55.374"N | 104°48'44.887"W | 1.14 | |
| 10544.00 | 91.400 | 268.200 | 7245.07 | 3120.18 | -370.13 | -3099.62 | 40°13'55.313"N | 104°48'47.323"W | 0.64 | |
| 10638.00 | 90.700 | 268.500 | 7243.35 | 3214.00 | -372.84 | -3193.57 | 40°13'55.287"N | 104°48'48.534"W | 0.81 | |
| 10732.00 | 90.100 | 267.900 | 7242.69 | 3307.84 | -375.79 | -3287.52 | 40°13'55.257"N | 104°48'49.745"W | 0.90 | |
| 10827.00 | 90.800 | 268.500 | 7241.95 | 3402.68 | -378.78 | -3382.47 | 40°13'55.228"N | 104°48'50.969"W | 0.97 | |
| 10923.00 | 90.000 | 269.200 | 7241.27 | 3498.46 | -380.70 | -3478.44 | 40°13'55.208"N | 104°48'52.207"W | 1.11 | |
| 11019.00 | 89.100 | 270.000 | 7242.03 | 3594.14 | -381.37 | -3574.44 | 40°13'55.202"N | 104°48'53.445"W | 1.25 | |
| 11114.00 | 88.600 | 270.000 | 7243.94 | 3688.75 | -381.37 | -3669.42 | 40°13'55.202"N | 104°48'54.669"W | 0.53 | |
| 11209.00 | 89.400 | 269.700 | 7245.59 | 3783.38 | -381.62 | -3764.40 | 40°13'55.199"N | 104°48'55.894"W | 0.90 | |
| 11398.00 | 90.700 | 268.300 | 7245.43 | 3971.90 | -384.92 | -3953.36 | 40°13'55.166"N | 104°48'58.330"W | 1.01 | |
| 11493.00 | 91.400 | 268.000 | 7243.69 | 4066.74 | -387.99 | -4048.30 | 40°13'55.136"N | 104°48'59.554"W | 0.80 | |
| 11588.00 | 91.000 | 268.300 | 7241.70 | 4161.57 | -391.05 | -4143.23 | 40°13'55.105"N | 104°49'00.778"W | 0.53 | |
| 11683.00 | 90.300 | 268.200 | 7240.62 | 4256.40 | -393.95 | -4238.17 | 40°13'55.076"N | 104°49'02.002"W | 0.74 | |
| 11778.00 | 90.100 | 267.700 | 7240.29 | 4351.27 | -397.35 | -4333.11 | 40°13'55.043"N | 104°49'03.226"W | 0.57 | |
| 11971.00 | 89.700 | 268.400 | 7240.63 | 4543.99 | -403.92 | -4526.00 | 40°13'54.977"N | 104°49'05.713"W | 0.42 | LAST BHI MWD+IFR SURVEY |
| 12030.00 | 89.700 | 268.400 | 7240.93 | 4602.88 | -405.57 | -4584.98 | 40°13'54.961"N | 104°49'06.474"W | 0.00 | PROJECTION TO BIT |

HOLE & CASING SECTIONS - Ref Wellbore: BELLA FEDERAL 36N-7HZ AWB Ref Wellpath: BELLA FEDERAL 36N-7HZ AWP

| String/Diameter | Start MD [ft] | End MD [ft] | Interval [ft] | Start TVD [ft] | End TVD [ft] | Start N/S [ft] | Start E/W [ft] | End N/S [ft] | End E/W [ft] |
|-------------------------|---------------|-------------|---------------|----------------|--------------|----------------|----------------|--------------|--------------|
| 13.5in Open Hole | 13.00 | 931.00 | 918.00 | 13.00 | 931.00 | 0.00 | 0.00 | 2.33 | -0.81 |
| 9.625in Casing Surface | 13.00 | 931.00 | 918.00 | 13.00 | 931.00 | 0.00 | 0.00 | 2.33 | -0.81 |
| 8.75in Open Hole | 931.00 | 7553.00 | 6622.00 | 931.00 | 7250.40 | 2.33 | -0.81 | -342.33 | -109.62 |
| 7in Casing Intermediate | 13.00 | 7544.00 | 7531.00 | 13.00 | 7249.88 | 0.00 | 0.00 | -342.45 | -100.64 |
| 6.125in Open Hole | 7553.00 | 12030.00 | 4477.00 | 7250.40 | 7240.93 | -342.33 | -109.62 | -405.57 | -4584.98 |



Actual Wellpath Report

BELLA FEDERAL 36N-7HZ AWP

Page 5 of 6



| REFERENCE WELLPATH IDENTIFICATION | | | |
|-----------------------------------|---------------------------------|----------|--|
| Operator | KERR-MCGEE OIL & GAS ONSHORE LP | Slot | SLOT#23 BELLA FEDERAL 36N-7HZ (369'FSL & 2428'FWL, SEC.08) |
| Area | COLORADO | Well | BELLA FEDERAL 36N-7HZ |
| Field | WELD COUNTY (KERR MCGEE) | Wellbore | BELLA FEDERAL 36N-7HZ AWB |
| Facility | SEC.08-T3N-R66W | | |

| TARGETS | | | | | | | | | |
|---|---------|----------|------------|-----------|-------------------|--------------------|----------------|-----------------|---------|
| Name | MD [ft] | TVD [ft] | North [ft] | East [ft] | Grid East [US ft] | Grid North [US ft] | Latitude | Longitude | Shape |
| BELLA FEDERAL SECTION 7 LINES | | 15.00 | 1783.97 | 4.42 | 3194855.08 | 1330292.10 | 40°14'16.602"N | 104°48'07.301"W | polygon |
| BELLA FEDERAL SECTION 8 LINES | | 15.00 | 1783.97 | 4.42 | 3194855.08 | 1330292.10 | 40°14'16.602"N | 104°48'07.301"W | polygon |
| MILLER ESTATES 8-12K (150' RADIUS) | | 15.00 | 1666.24 | -1764.94 | 3193086.77 | 1330160.46 | 40°14'15.438"N | 104°48'30.116"W | circle |
| MILLER ESTATES 8-13K (150' RADIUS) | | 15.00 | 113.22 | -1597.81 | 3193266.12 | 1328608.87 | 40°14'00.091"N | 104°48'27.960"W | circle |
| BELLA FEDERAL 36N-7HZ BHL ON PLAT REV-1 (50'FSL & 2181'FEL, SEC.07) | | 7176.00 | -373.36 | -4610.95 | 3190257.03 | 1328098.61 | 40°13'55.279"N | 104°49'06.809"W | point |
| BELLA FEDERAL 36N-7HZ LAND BOX | | 7200.00 | 0.00 | 0.00 | 3194864.70 | 1328508.23 | 40°13'58.973"N | 104°48'07.358"W | polygon |

| WELLPATH COMPOSITION - Ref Wellbore: BELLA FEDERAL 36N-7HZ AWB Ref Wellpath: BELLA FEDERAL 36N-7HZ AWP | | | | | |
|--|-------------|--------------------------------------|---|---------------------------|--|
| Start MD [ft] | End MD [ft] | Positional Uncertainty Model | Log Name/Comment | Wellbore | |
| 13.00 | 823.00 | Generic gyro - continuous (Standard) | MS GYRODATA SURVEYS <113-823> | BELLA FEDERAL 36N-7HZ AWB | |
| 823.00 | 7495.00 | NaviTrak (IFR) | BHI NAVITRAK MWD+IFR 8 3/4" HOLE <1016-7495> | BELLA FEDERAL 36N-7HZ AWB | |
| 7495.00 | 11971.00 | NaviTrak (IFR) | BHI NAVITRAK MWD+IFR 6 1/8" HOLE <7605-11971> | BELLA FEDERAL 36N-7HZ AWB | |
| 11971.00 | 12030.00 | Blind Drilling (std) | Projection to bit | BELLA FEDERAL 36N-7HZ AWB | |



Actual Wellpath Report

BELLA FEDERAL 36N-7HZ AWP

Page 6 of 6



| REFERENCE WELLPATH IDENTIFICATION | | | |
|-----------------------------------|---------------------------------|----------|--|
| Operator | KERR-MCGEE OIL & GAS ONSHORE LP | Slot | SLOT#23 BELLA FEDERAL 36N-7HZ (369'FSL & 2428'FWL, SEC.08) |
| Area | COLORADO | Well | BELLA FEDERAL 36N-7HZ |
| Field | WELD COUNTY (KERR MCGEE) | Wellbore | BELLA FEDERAL 36N-7HZ AWP |
| Facility | SEC.08-T3N-R66W | | |

| WELLPATH COMMENTS | | | | |
|-------------------|-----------------|-------------|----------|---------------------------|
| MD [ft] | Inclination [°] | Azimuth [°] | TVD [ft] | Comment |
| 13.00 | 0.000 | 312.880 | 13.00 | TIE-ON |
| 113.00 | 0.230 | 312.880 | 113.00 | BEGIN GYRO SURVEYS |
| 823.00 | 0.180 | 330.380 | 823.00 | TIE ONTO GYRO SURVEYS |
| 1016.00 | 0.200 | 316.100 | 1016.00 | BEGIN BHI MWD+IFR SURVEYS |
| 7544.00 | 86.514 | 270.682 | 7249.88 | 7" CASING POINT |
| 11971.00 | 89.700 | 268.400 | 7240.63 | LAST BHI MWD+IFR SURVEY |
| 12030.00 | 89.700 | 268.400 | 7240.93 | PROJECTION TO BIT |